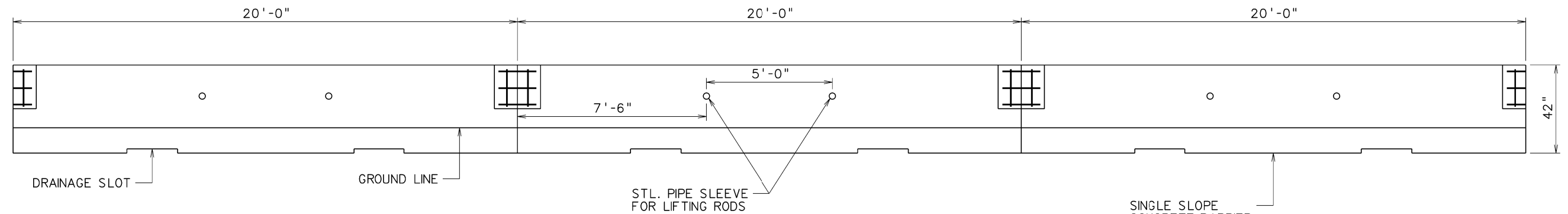


PLAN



ELEVATION

NOTES

CAST IN-PLACE CONCRETE BARRIER MEDIANS SHALL BE CONSTRUCTED IN SECTIONS AS SHOWN HEREIN AND SHALL BE CONSTRUCTED IN ACCORDANCE WITH THE APPLICABLE PROVISIONS OF SECTION 610 OF THE STANDARD SPECIFICATIONS.

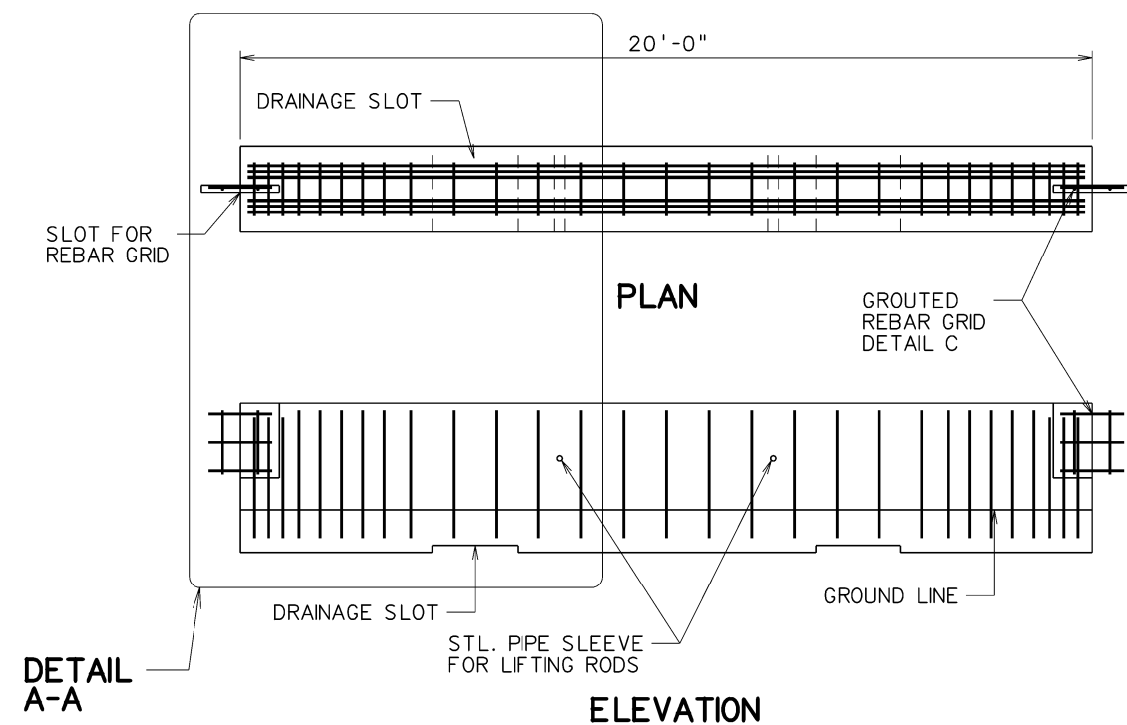
AT BARRIER MEDIAN CONTRACTION JOINTS OVER EXISTING PAVEMENT CONTRACTION JOINTS, MEDIAN SECTIONS SHALL BE SEPARATED BY OPEN JOINTS, HAVING THE SAME WIDTH AS THE PAVEMENTS JOINTS, FOR THE FULL EXPOSED DEPTH OF THE MEDIAN.

EXPANSION JOINTS SHALL BE PLACED IN THE MEDIAN BARRIER AT APPROXIMATELY 20FT INTERVALS ALONG THE LENGTH OF THE MEDIAN OR AS DIRECTED BY THE ENGINEER AND COMPLIES WITH THE REQUIREMENTS OF SECTION 610 OF THE STANDARD SPECIFICATIONS.

THE FINISHED SURFACE OF THE MEDIAN BARRIER SHALL BE SMOOTH, DENSE, UNPITTED AND FREE FROM AIR BUBBLE POCKETS, DEPRESSIONS, AND HONEYCOMB. IF DEEMED NECESSARY BY THE ENGINEER, THE ABOVE MENTIONED FINISHED SURFACE WILL BE OBTAINED BY THE USE OF WATER AND A WOOD BLOCK OR CARBORUNDUM BRICK.

AT EACH END OF THE MEDIAN BARRIER INSTALLATIONS, THE MEDIAN SHALL BE ADAQUATELY TERMINATED AS SHOWN OR SPECIFIED ELSEWHERE IN THE PROJECT PLANS.

UNLESS OTHERWISE SPECIFIED, BI-DIRECTIONAL DELINEATORS, MEETING THE REQUIREMENTS OF THE SECTION 661 OF THE STANDARD SPECIFICATIONS AND MOUNTED ON SUITABLE SUPPORTS SHALL BE SECURED TO, AND SPACED ALONG THE LENGTH OF, MEDIAN BARRIER AS SHOWN AND SPECIFIED ON STANDARD SHEET TE 11-5 OF THE STANDARD DETAILS BOOK, VOLUME II.



DETAIL A-A

DETAIL A  
SINGLE SLOPE  
CONCRETE BARRIER

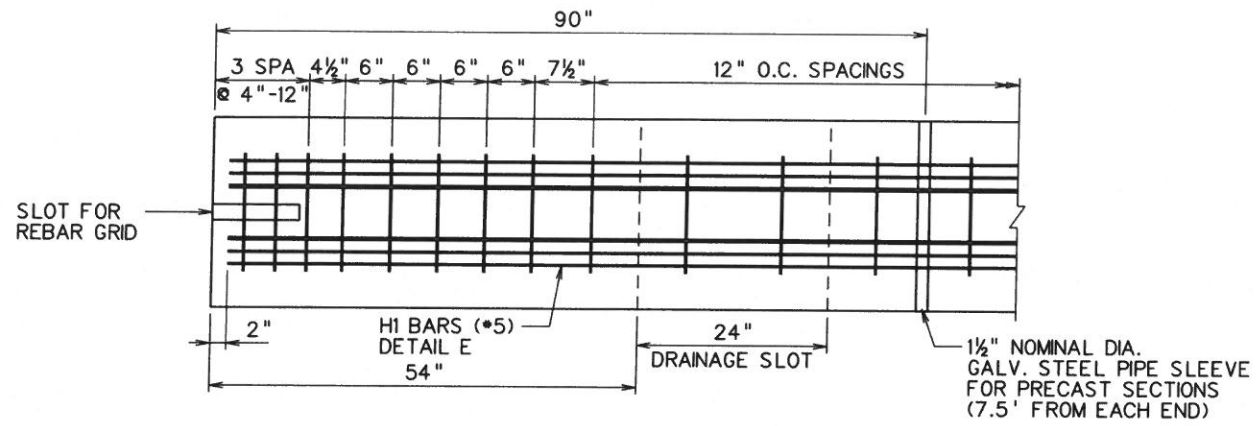
WEST VIRGINIA DEPARTMENT OF TRANSPORTATION  
DIVISION OF HIGHWAYS  
STANDARD DETAIL

PREPARED 8-17-17

REVISION DATE

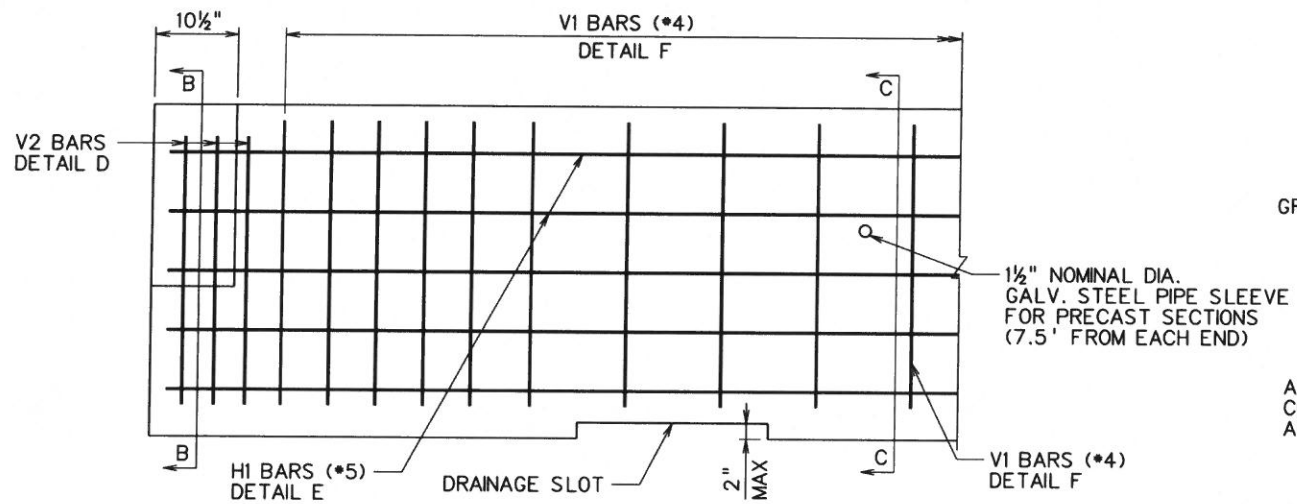

MEDIAN BARRIER

STANDARD SHEET

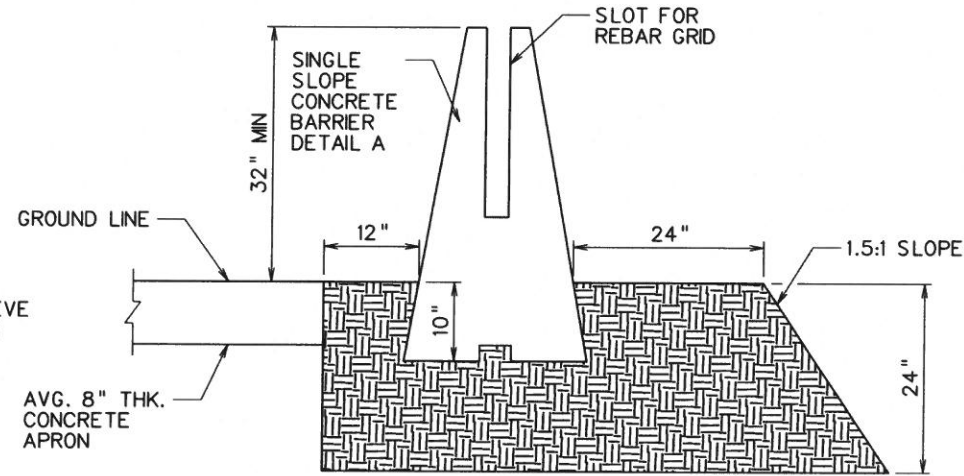


PLAN - DETAIL A-A

MARK	TYPE	NUMBER	LENGTH	A	B	C	D	E	R
<b>BARRIER</b>									
B401E	1	6	7' - 4"	3' - 8"	3' - 8"				
B402E	2	23	8' - 1"						
B501E	STR	5	19' - 8"						
B601E	STR	6	1' - 6"						
B801E	STR	6	1' - 6"						



ELEVATION - DETAIL A-A



END VIEW A-A  
SHOULDER APPLICATION

**REINFORCEMENT NOTES:**

SEE ACI DETAILING MANUAL FOR STANDARD HOOK DIMENSIONS. ALL DIMENSIONS ARE OUT TO OUT.

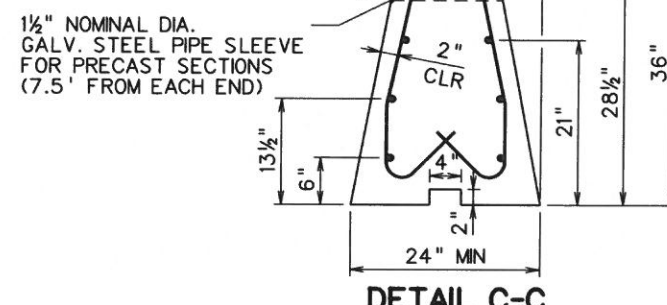
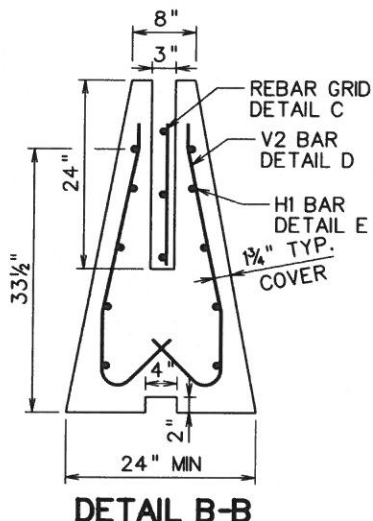
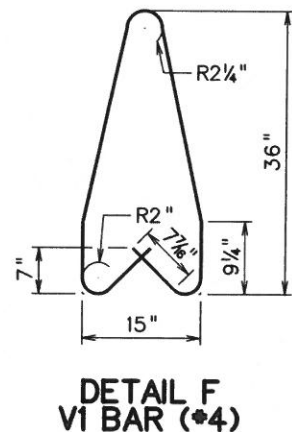
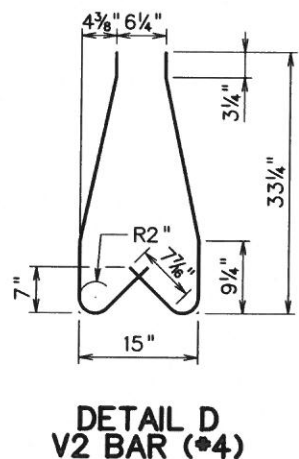
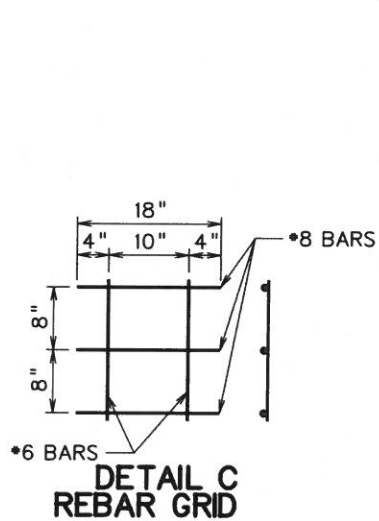
FIGURES IN CIRCLES SHOW BAR TYPES.

DIMENSION ON 180 DEGREE HOOKS TO BE SHOWN ONLY WHERE NECESSARY TO RESTRICT HOOK SIZE, OTHERWISE STANDARD HOOKS ARE TO BE USED.

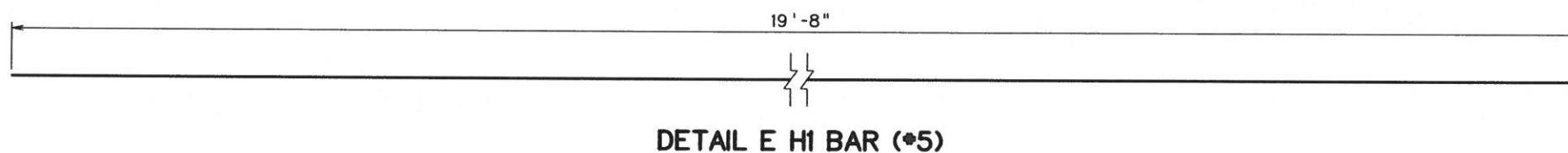
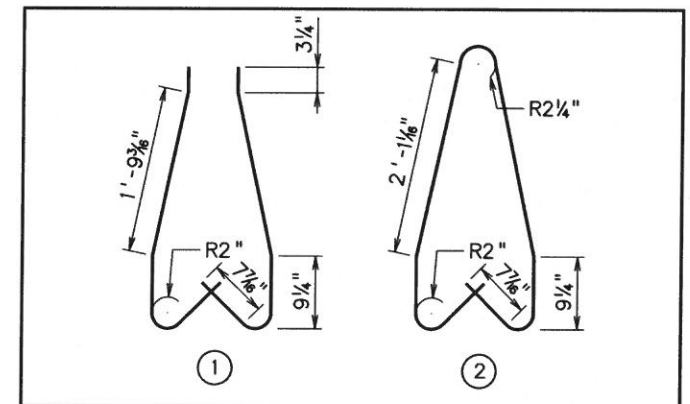
REBAR QUANTITIES BASED ON EACH 20FT SECTION OF MEDIAN BARRIER

**PREFIXES**

B = BARRIER



**BAR TYPES**



DETAIL E HI BAR (\*5)

WEST VIRGINIA DEPARTMENT OF TRANSPORTATION  
DIVISION OF HIGHWAYS  
STANDARD DETAIL

PREPARED BY: \_\_\_\_\_  
REVISION DATE: \_\_\_\_\_

MEDIAN BARRIER

STANDARD SHEET \_\_\_\_\_