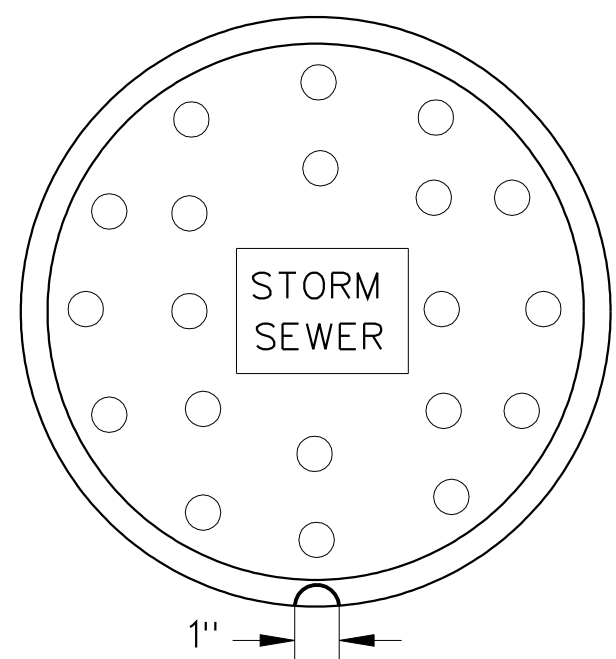
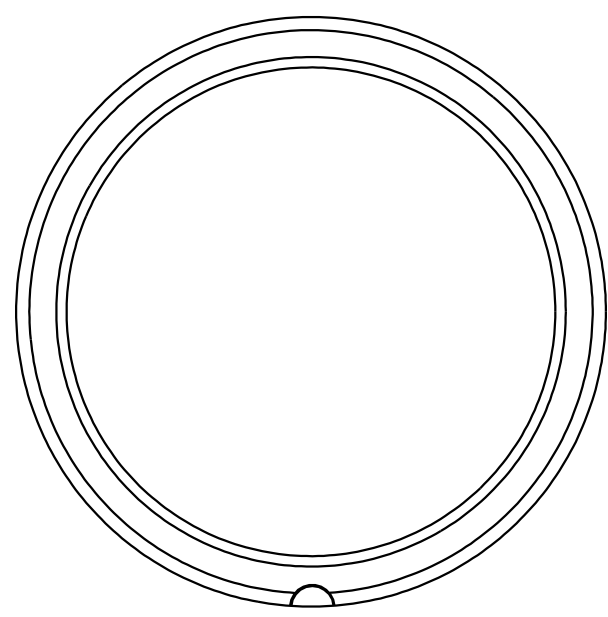


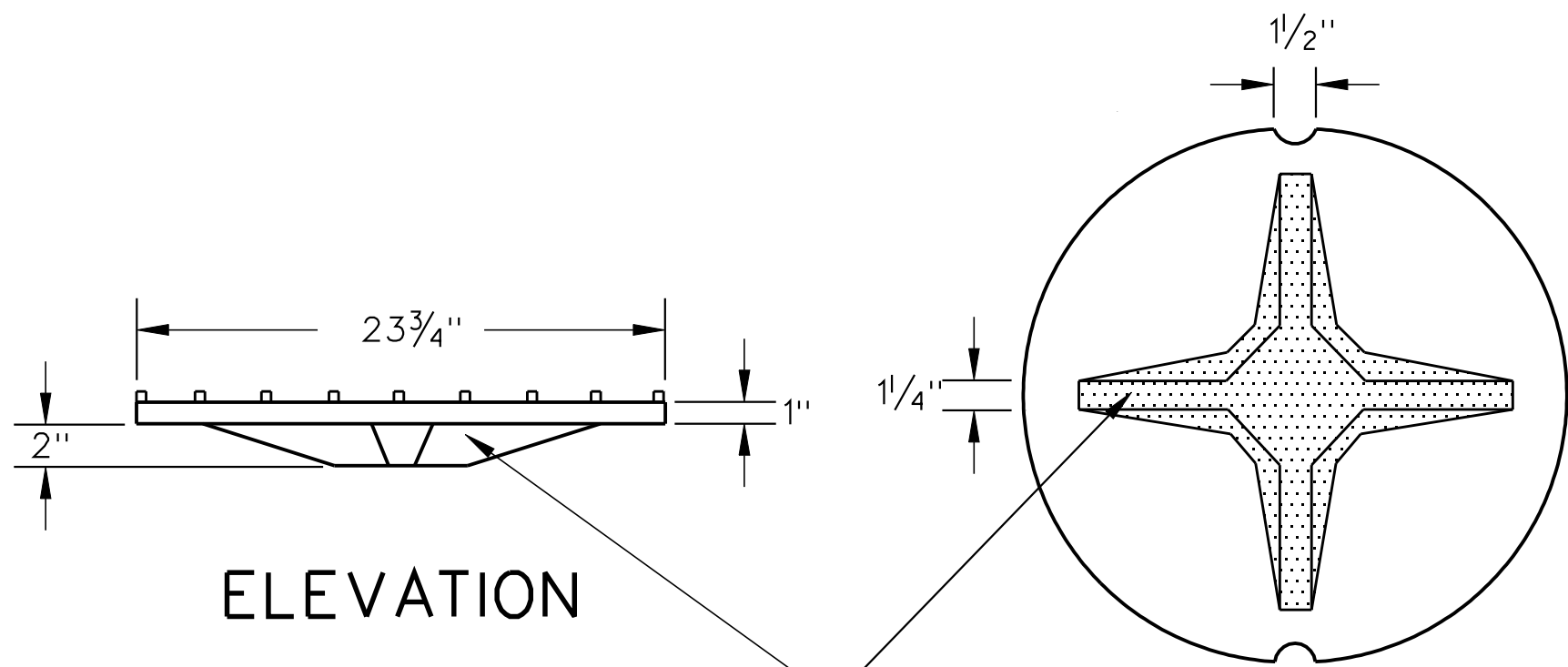
PLAN



PLAN



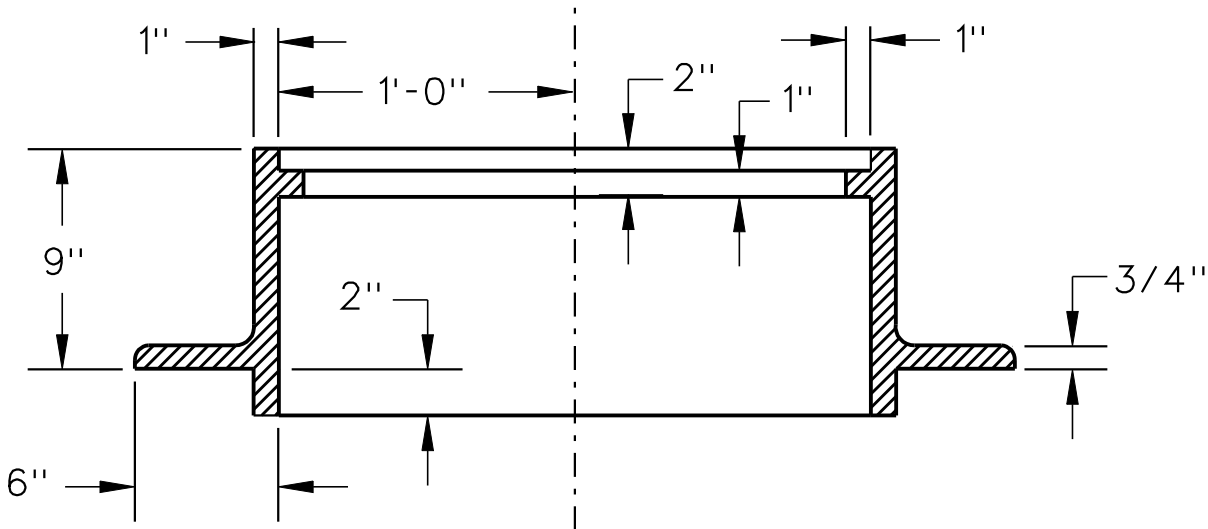
BOTTOM VIEW
OF COVER



ELEVATION

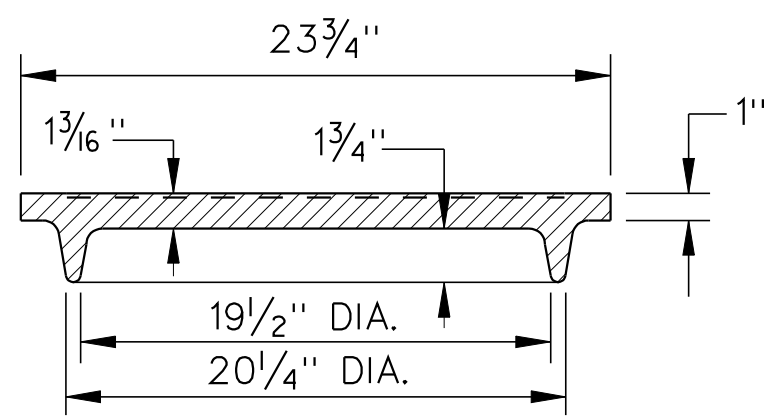
INVERTED PLAN

MANHOLE COVER



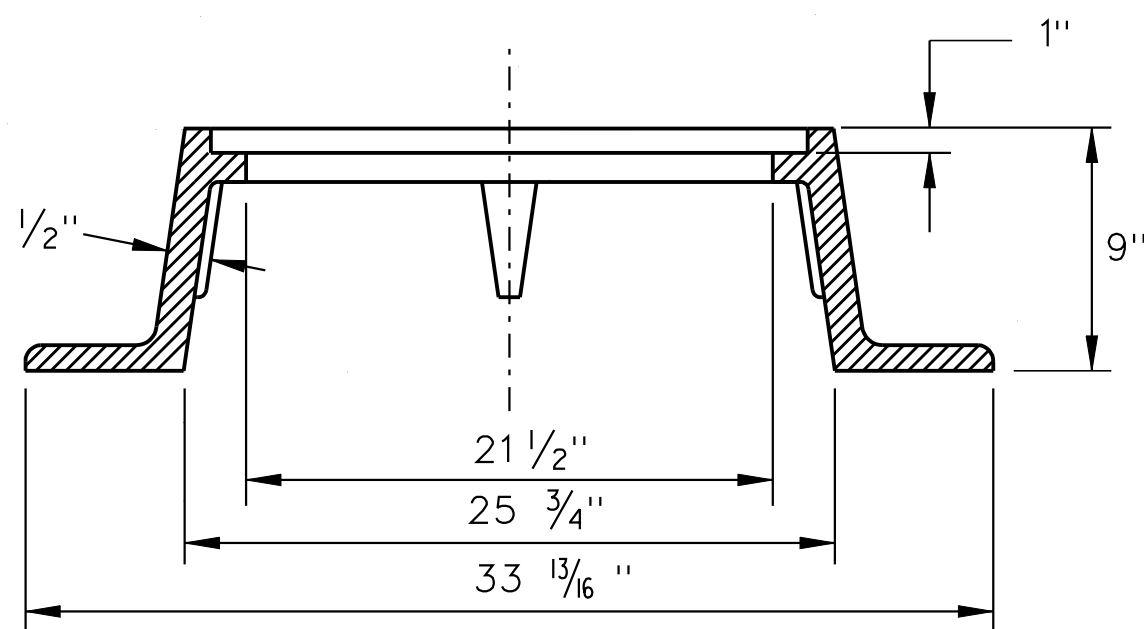
SECTION

MANHOLE FRAME



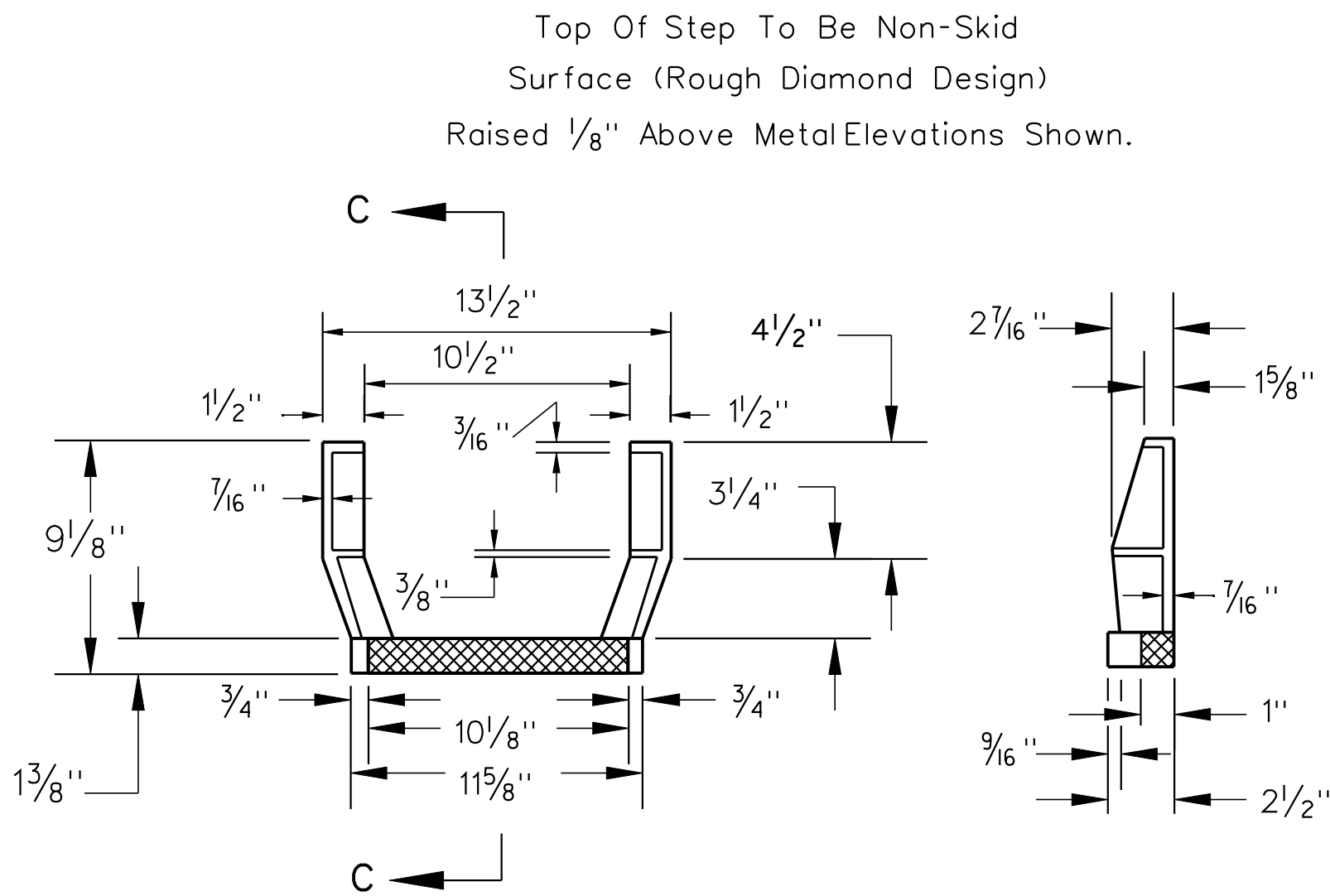
COVER SECTION

ALTERNATE MANHOLE COVER



SECTION

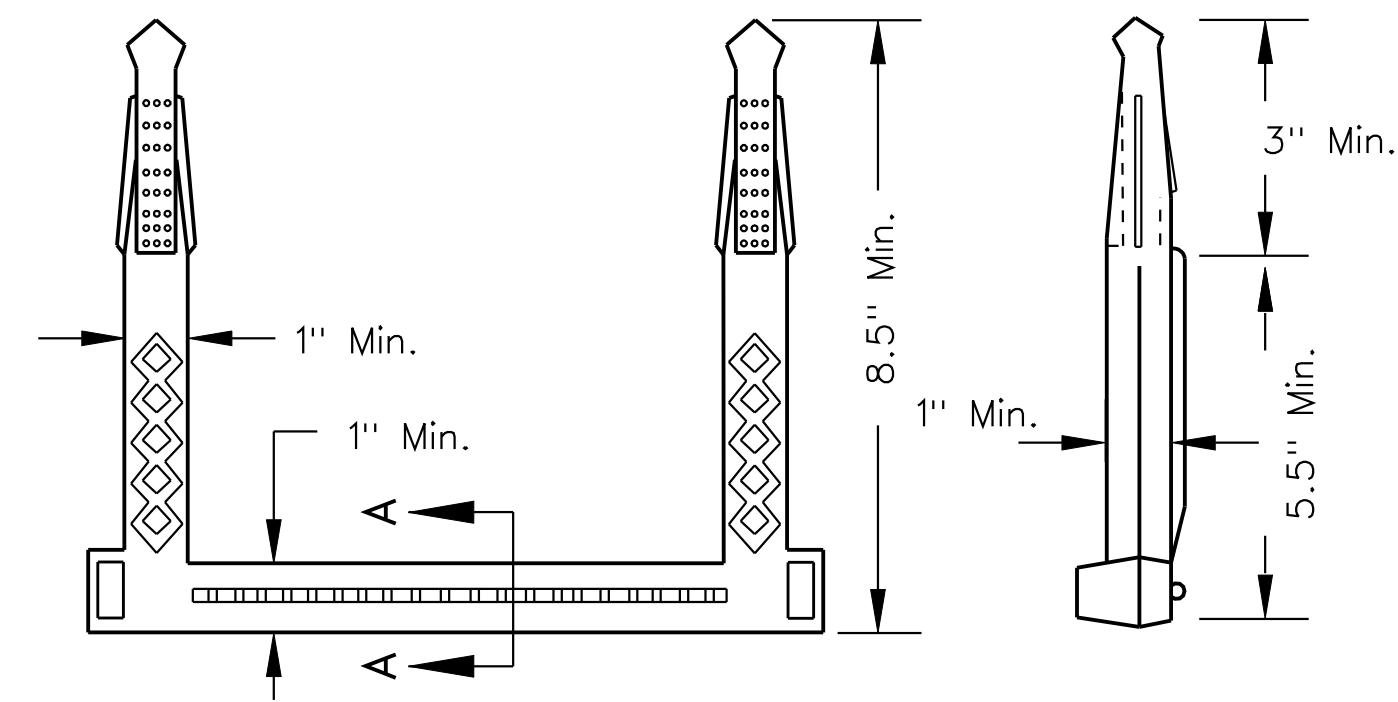
ALTERNATE MANHOLE FRAME



PLAN

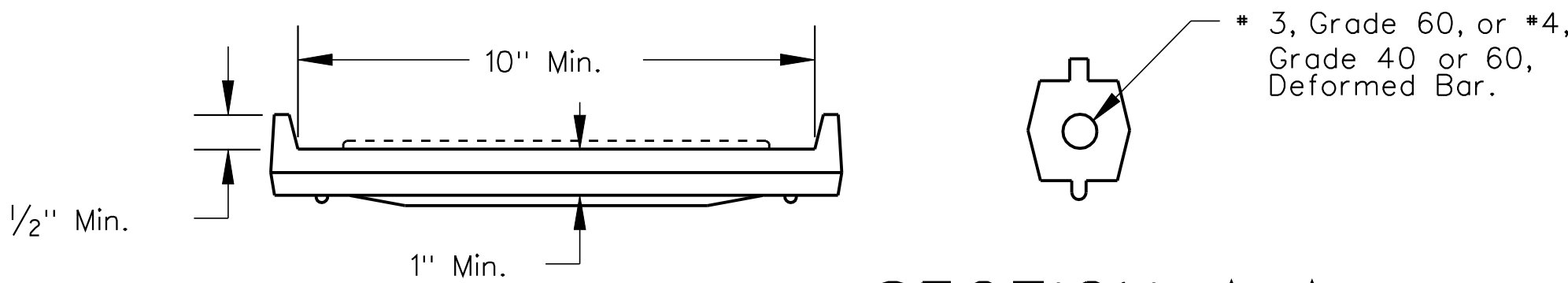
SECTION C-C

GRAY IRON STEP



SECTION A-A

(Enlarged)



REINFORCED PLASTIC AND REINFORCED -
CORROSION RESISTANT RUBBER MANHOLE STEPS

NOTES

Lettering on covers shall denote STORM SEWER or SANITARY SEWER as applicable.
Bottom ribs may be deleted from manhole cover castings.
The 1/8 inch raised lugs are a skid resistant measure. Alternative measures will require approval by the Engineer.
Shop Drawings shall be submitted if details and dimensions vary.

WEST VIRGINIA DEPARTMENT OF TRANSPORTATION
DIVISION OF HIGHWAYS
STANDARD DETAIL

REVISED STANDARD DETAIL

PREPARED 7-1-99

REVISION DATE

3/7/11

MANHOLE CASTINGS

STANDARD SHEET DR7-X