

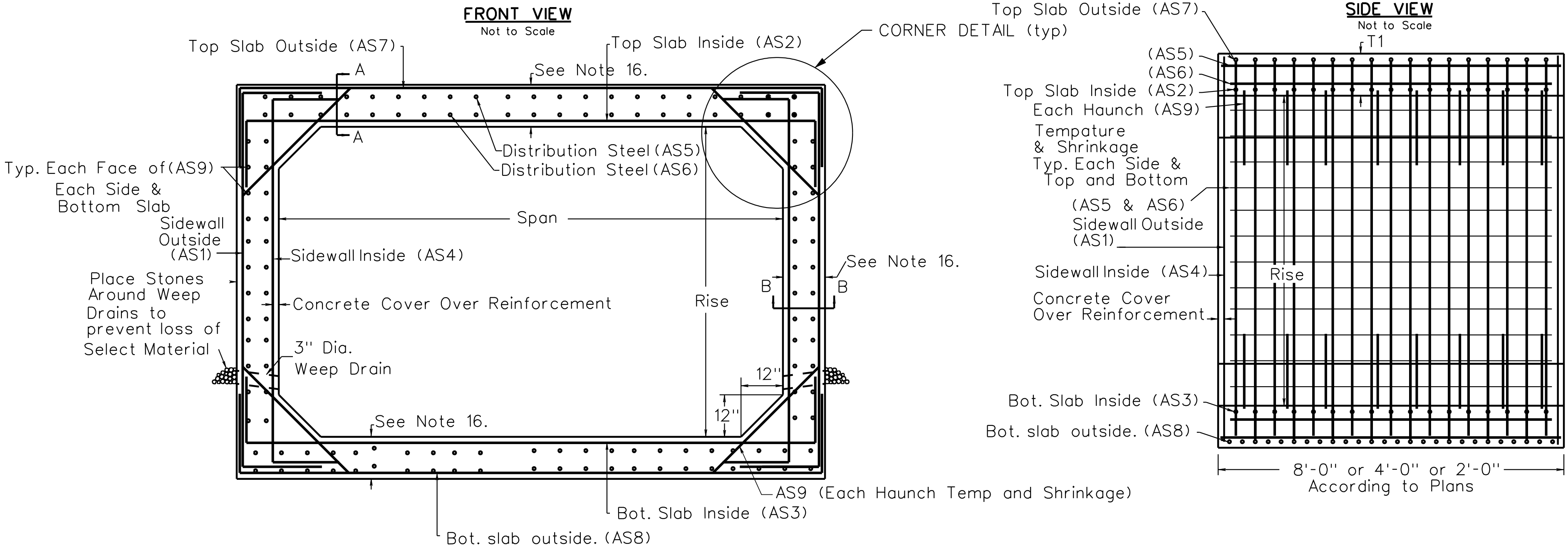
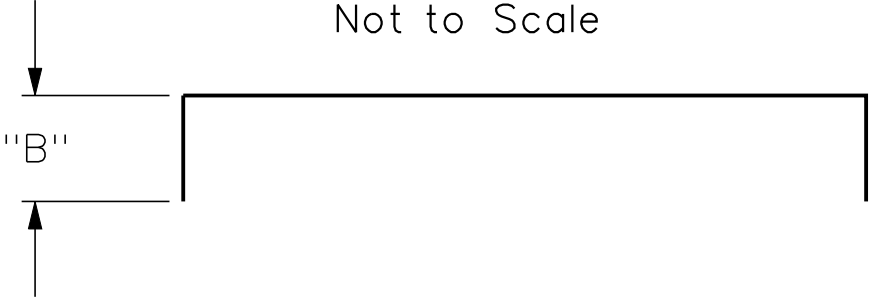
NOTES:

1. The current edition of the West Virginia Department of Transportation Division of Highways Standard Specifications, Roads and Bridges , as amended by the current edition of the Supplemental Specifications, the Contract Documents, and the Contract Plans are the Governing Provisions applicable to this project.
2. All designs shall be in accordance with the current edition AASHTO LRFD Bridge Design Specifications, Customary U.S. Units.
3. All reinforcing steel bars shall be intermediate grade billet steel in accordance with AASHTO M31, Grade 60. Epoxy coated bars shall be in accordance with AASHTO 284. All welded wire fabric shall be in accordance with AASHTO M225 and epoxy coated welded wire fabric shall be in accordance with AASHTO 284.
4. All materials with the exception of the steel reinforcement shall conform to the requirements of AASHTO M273.
5. If (AS5) and (AS6) are used in top slab (AS9) will not be put in top slab.
6. All reinforcement shall be epoxy coated in units manufactured for 0-2 feet of fill. Epoxy coated reinforcement shall be used only in units manufactured for 0-2 feet of fill.
7. Units designed for 0-2 feet of fill, and units to be placed within 8 feet of exposure at end of culvert shall have an air entrainment content of 7%  $\pm$  2 1/2%.
8. The minimum f'c of concrete shall be 5000 psi.

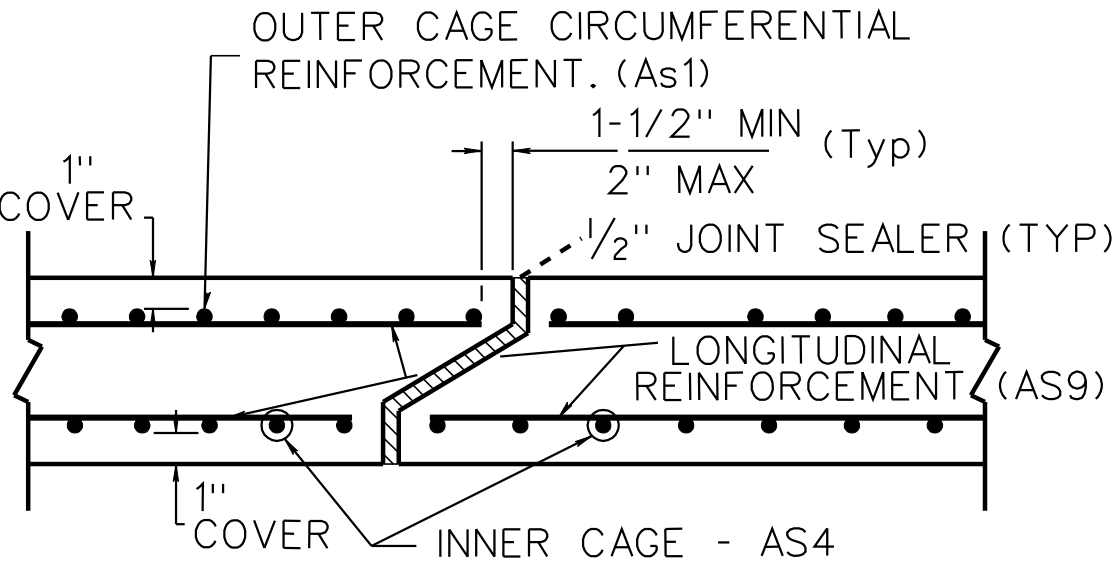
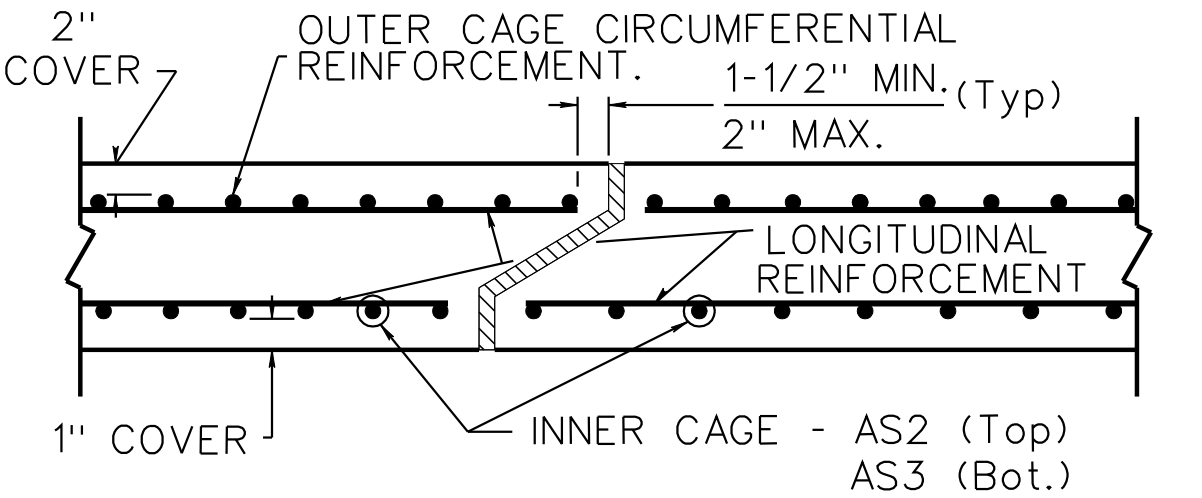
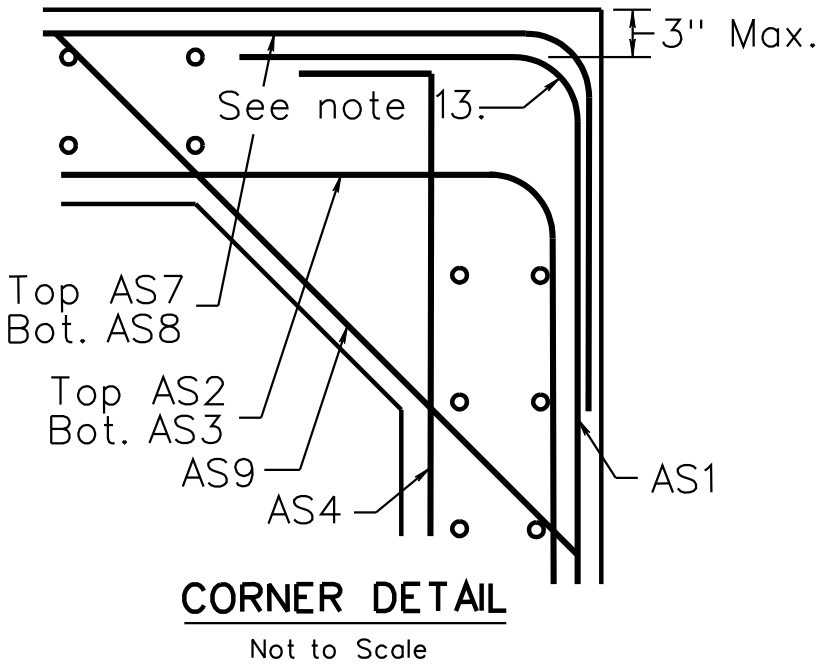
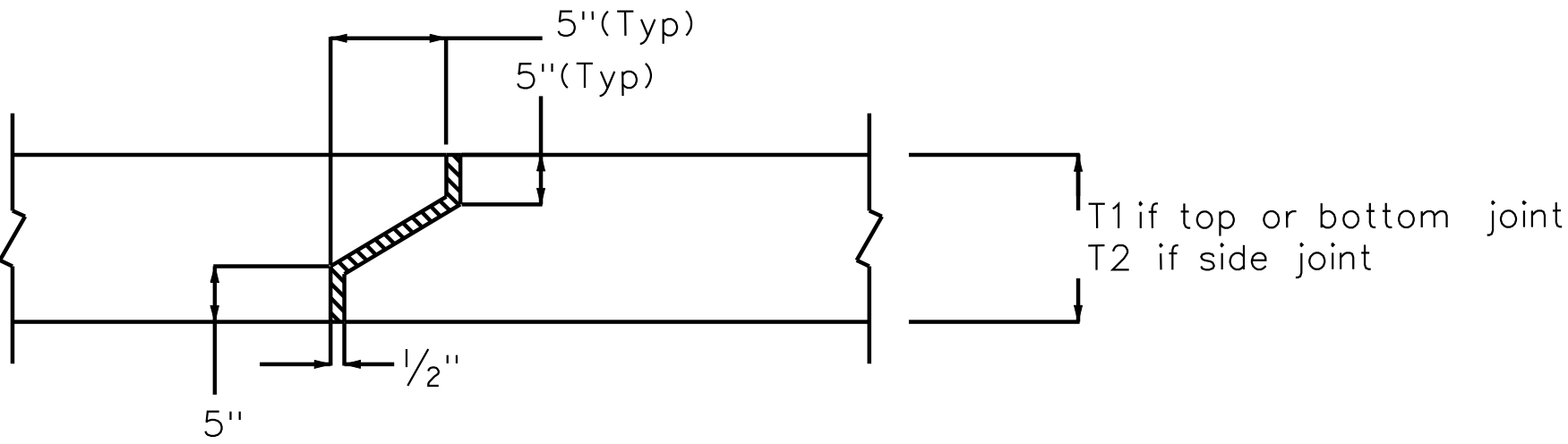
9. Minimum reinforcement cover for outside of top slab shall be 2 Inches. For all other reinforcement minimum cover shall be 1 inch.
10. Installation of culverts shall be as detailed in the plans, including the type and amount of backfill and bedding.
11. Joints shall be sealed with asphalt plastic cement in accordance with Section 708 of the Standard Specifications.
12. Weep holes shall be installed every 10 feet.
13. Reinforcing bend diameters shall conform to current edition AASHTO LRFD Bridge Design Specifications.
14. Design of lifting points shall be the responsibility of the manufacturer
15. Units designed for 0-2 feet of fill shall have AS5 and AS6 bars in the top slab spaced at 6 inches center to center.
16. Wall thicknesses shall be a maximum 12" unless prior approval is granted by the Department.
17. Design of structural elements including reinforcing steel shall be submitted by the contractor using the Division Approval method.

PUBLIC ROADS DIV.	STATE DIST. NO.	PROJECT NUMBER	COUNTY	SHEET NO.	TOTAL SHTS
W.VA.					

**Bend Diagram**  
Not to Scale



**Joint Detail**  
Not to Scale



APPROVED..... DATE .....	PREPARED: 7-10 TW
DIRECTOR, STRUCTURES DIVISION	REVISED:
WEST VIRGINIA DEPARTMENT OF TRANSPORTATION DIVISION OF HIGHWAYS-ENGINEERING	
LARGE BOX CULVERT GENERAL NOTES AND DETAILS	
STANDARD SHEET BC-1	

THE WEST VIRGINIA DEPARTMENT OF TRANSPORTATION DIVISION OF HIGHWAYS-ENGINEERING	
	DESIGNED BY: TW
	DRAWN BY: TW/JC
	CHECKED BY: RA
	REVIEWED BY:
	DATE:
	SCALE:
LARGE BOX CULVERT GENERAL NOTES AND DETAILS	SHEET NO. OF
	BRIDGE NUMBER