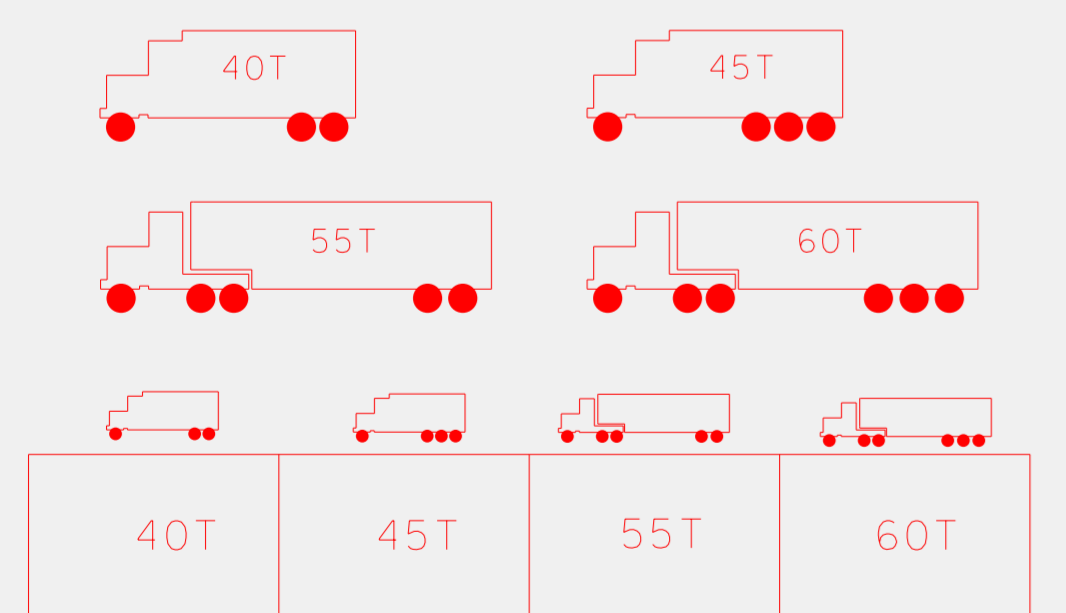


LEGEND

ROADS AND ROADWAY FEATURES	BOUNDARIES	PUBLIC SERVICE FACILITIES
IMPAVED ROAD	STATE LINE	POST OFFICE
PART-TIME ROAD	COUNTY LINE	BUSINESS AND POST OFFICE
UNPAVED ROAD	MAGISTERIAL DISTRICT LINE	POWER PLANT
GRADED AND DRAINED ROAD	INCORPORATED TOWN	RADIO OR TV TOWER (OPTICAL LETTERS)
GRAVEL ON 5' ONE ROAD	AREA ENLARGED	DEPARTMENT OF HIGHWAYS GARAGE
RITUM ROAD-LOW TYPE	PARK OR FOREST BOUNDARY	STATE POLICE STATION
PAVED ROAD	CONSERVATION OR RECREATION	FIRE HOUSE AND/OR RESCUE SQUAD
DIVIDED HIGHWAY	PICNIC GROUND	DUMP-GARAGE, REFUSE OR TRASH
HIGHWAY SIGN SYSTEMS		AUTOMOTIVE GRAVEYARD
		METAL SCRAP YARD
		SANITARY LAND FILL
		MISCELLANEOUS DUMP

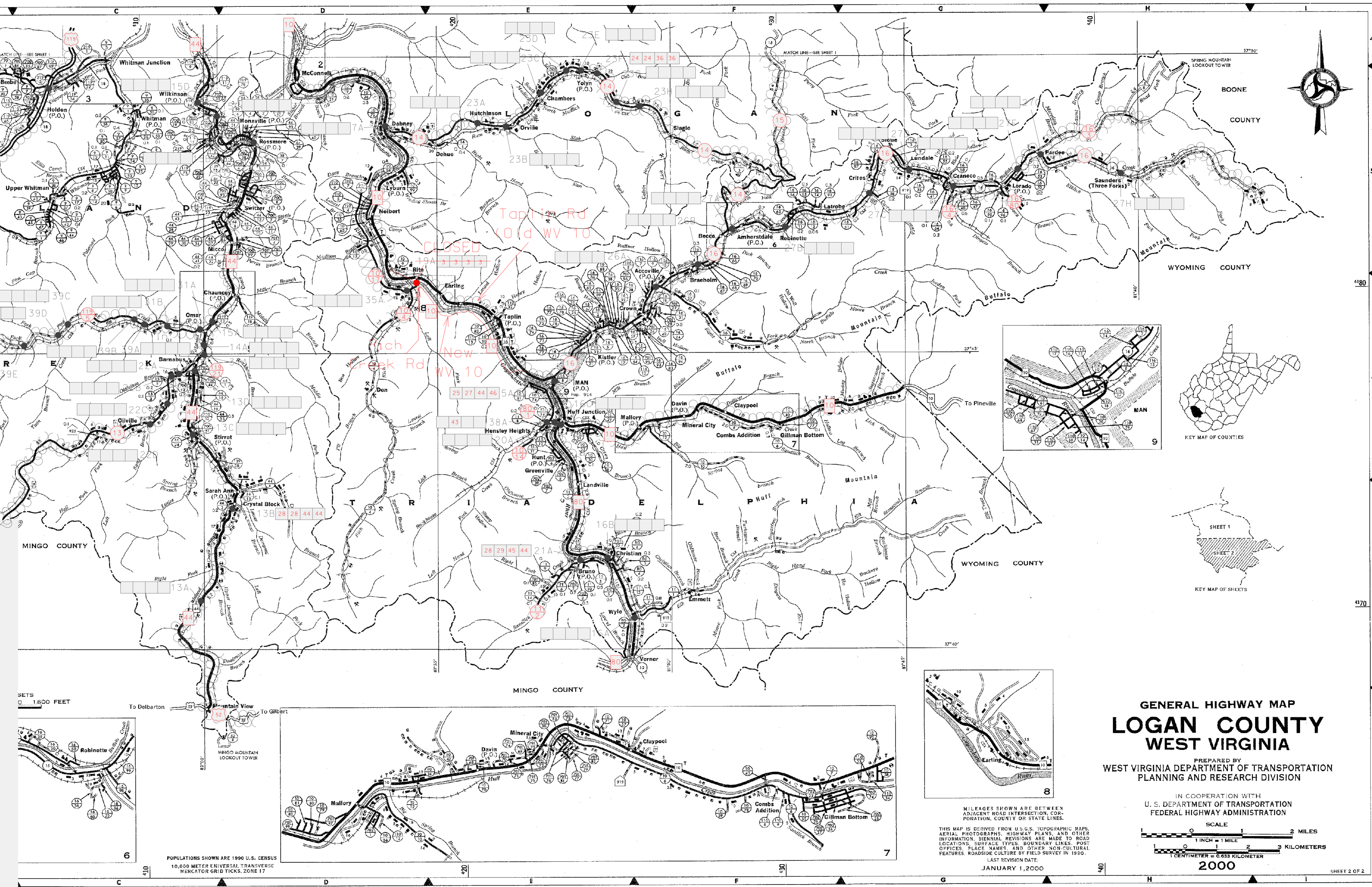
COAL RESOURCE TRANSPORTATION SYSTEM (CRTS) 7/20/2012



The maximum allowable Gross Vehicle Weight (GVW) in tons for each of four vehicle types is shown above. Four boxes are shown adjacent to each bridge, corresponding to the above four vehicle types. A number in any box indicates a posted load less than the maximum allowable. A blank box indicates the bridge limit will be the maximum allowable GVW.

○○○○○ = CRTS Route

- *New section of WV 10 Approximate
- *Taplin Road not yet redesignated
- *Rich Creek Road not yet redesignated



**GENERAL HIGHWAY MAP
LOGAN COUNTY
WEST VIRGINIA**

PREPARED BY
WEST VIRGINIA DEPARTMENT OF TRANSPORTATION
PLANNING AND RESEARCH DIVISION

IN COOPERATION WITH
U.S. DEPARTMENT OF TRANSPORTATION
FEDERAL HIGHWAY ADMINISTRATION

