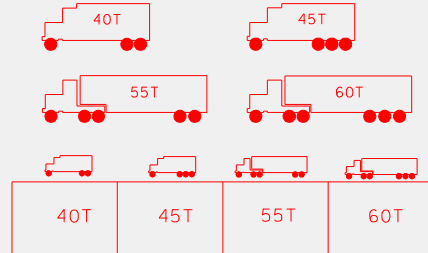


COAL RESOURCE TRANSPORTATION SYSTEM (CRTS) 5/11/2009

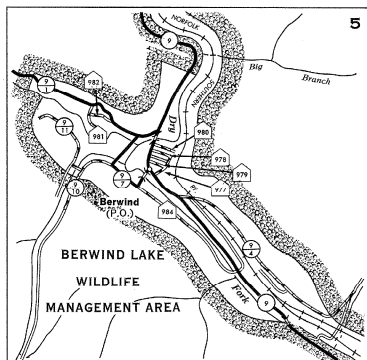


The maximum allowable Gross Vehicle Weight (GVW) in tons for each of four vehicle types is shown above. Four boxes are shown adjacent to each bridge, corresponding to the above four vehicle types. A number in any box indicates a posted load less than the maximum allowable. A blank box indicates the bridge limit will be the maximum allowable GVW.

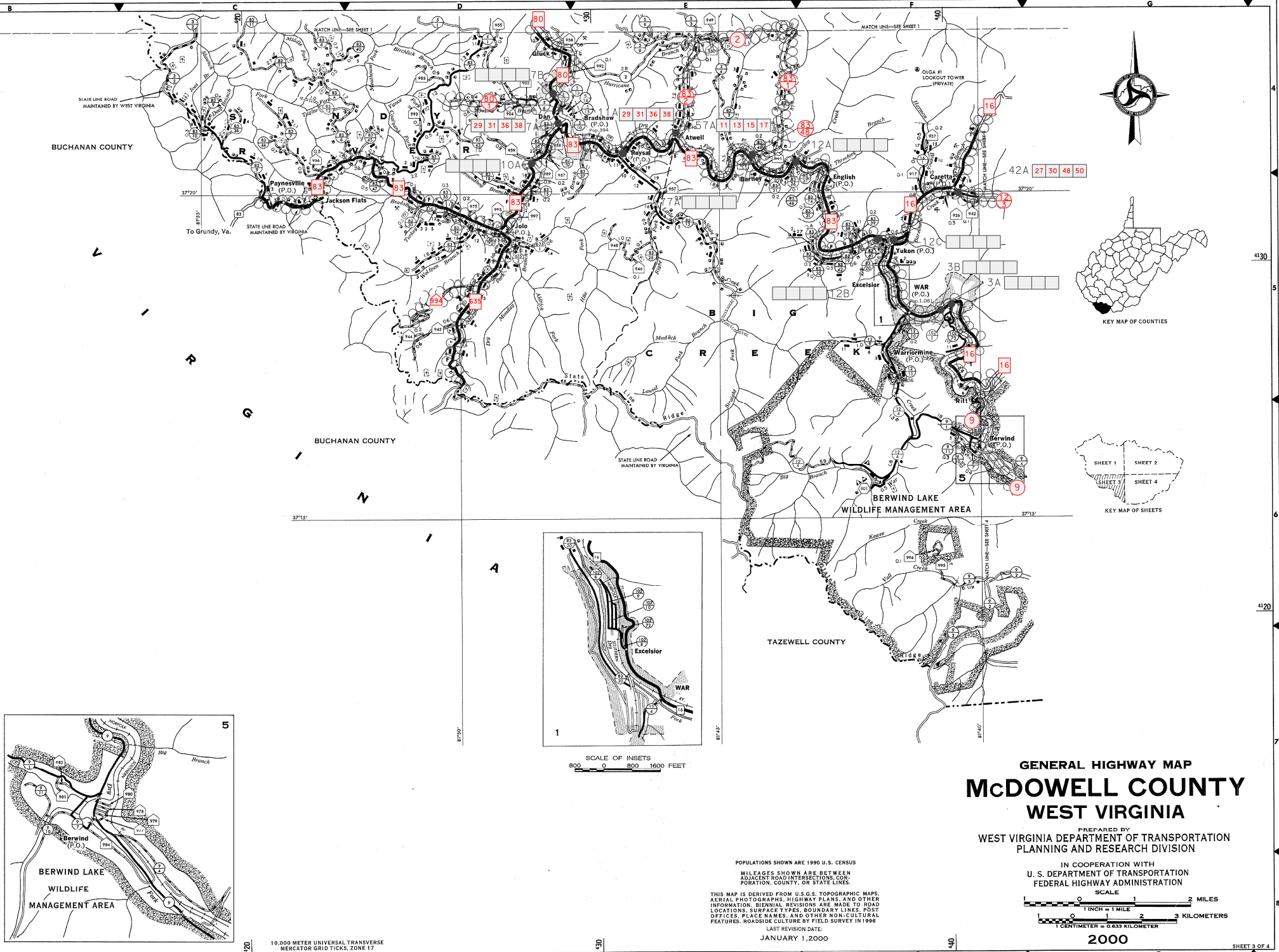
	RANGE LINES		CORRECTIONAL INSTITUTION
	DOCK OR LANDING		COUNTY FARM
	NAVIGABLE STREAM		STORE OR SMALL BUILDING
	HEAD OF NAVIGATION		SHOPPING CENTER
	DAM WITH LOCK		FACTORY OR INDUSTRIAL PLANT
	DAM WITHOUT LOCK		SEASONAL INDUSTRY
	AIRPORT, COMPLETE FACILITIES		MINE
	AIRPORT, LIMITED FACILITIES		SAWMILL
	LANDING AREA OR STRIP AND PAVED FIELD		PUMPING STATION
	SEAPLANE BASE		OIL OR GAS WELLS
	AIRWAY LIGHT BEACON		QUARRY
	RAILROAD (ANY KIND OF TRACK)		STOCK YARD LOADING PEN
	NARROW GAUGE RAILROAD		GREENHOUSE
	RAILROAD STATION		NURSERY
	GRADE CROSSING		POST OFFICE
	RAILROAD ABOVE		BUSINESS AND POST OFFICE
	RAILROAD BELOW		POWER PLANT
	RAILROAD TUNNEL		RADIO OR TV TOWER (WITH CALL LETTERS)
	NARROW STREAM		DEPARTMENT OF HIGHWAYS GARAGE
	WIDE STREAM		STATE POLICE STATION
	MARSH OR SWAMP		FIRE HOUSE AND/OR RESCUE SQUAD
	MARSH OR SWAMP		DUMP - GARBAGE, REFUSE OR TRASH
	DAM WITH ROAD		AUTOMOTIVE GRAVEYARD
	DAM WITHOUT ROAD		METAL SCRAP YARD
	HIGHWAY BRIDGE (LESS THAN 200 FT)		SANITARY LAND FILL
	BRIDGE, GENERAL (WIDE STREAM)		MISCELLANEOUS DUMP
	SUSPENSION BRIDGE		INCINERATOR
	TRUSS OR GIRDER BRIDGE		SEWAGE TREATMENT PLANT
	CANTILEVER BRIDGE		MILITARY POST
	DAM WITH ROAD		ARMORY
	HIGHWAY TUNNEL		GATE
	TOLL BRIDGE		SINK OR DEPRESSION
	BOUNDARIES		LATITUDE AND LONGITUDE
	STATE LINE		HIGHWAY INTERCHANGE
	COUNTY LINE		CITY AND VILLAGE CENTERS
	MAGISTERIAL DISTRICT LINE		STATE CAPITOL
	INCORPORATED TOWN		COUNTY SEAT
	AREA ENLARGED (CITY)		OTHER CITIES AND VILLAGES
	PARK OR FOREST BOUNDARY		

COPYRIGHT BY WEST VIRGINIA DIVISION OF HIGHWAYS 2000

Copies of this map are available to the public and to government agencies at a nominal price. Visit our Website at www.transportation.wv.gov or contact the Division of Highways, 100 Kanawha Boulevard East, Charleston, West Virginia 25305-0400. Telephone: (304) 526-2868.



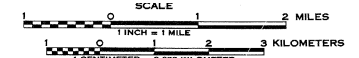
10,000 METER UNIVERSAL TRANSVERSE MERCATOR GRID TICKS, ZONE 17



**GENERAL HIGHWAY MAP
MCDOWELL COUNTY
WEST VIRGINIA**

PREPARED BY
WEST VIRGINIA DEPARTMENT OF TRANSPORTATION
PLANNING AND RESEARCH DIVISION

IN COOPERATION WITH
U. S. DEPARTMENT OF TRANSPORTATION
FEDERAL HIGHWAY ADMINISTRATION



2000

POPULATIONS SHOWN ARE 1990 U.S. CENSUS
MILEAGES SHOWN ARE BETWEEN
ADJACENT ROAD INTERSECTIONS, COR-
PORATION, COUNTY, OR STATE LINES.
THIS MAP IS DERIVED FROM U.S.S. TOPOGRAPHIC MAPS,
AERIAL PHOTOGRAPHY, HIGHWAY PLANS, AND OTHER
INFORMATION. BIENNIAL REVISIONS ARE MADE TO ROAD
LOCATIONS, SURFACE TYPES, BOUNDARY LINES, POST
OFFICES, PLACE NAMES, AND OTHER NON-CULTURAL
FEATURES. ROADSIDE CULTURE BY FIELD SURVEY IN 1998.
LAST REVISION DATE:
JANUARY 1, 2000