

# STATE OF THE SYSTEM

## 2050 LRTP – GOALS AND OBJECTIVES



The West Virginia Department of Transportation (WVDOT) 2050 Long Range Transportation Plan (2050 LRTP) will develop goals, objectives, and performance measures that will guide WVDOT through plan implementation. The goals define the desired result, while objectives support a specific goal and provide additional details or strategies on how the goal will be achieved. Performance measures are tied to each objective and are used to assess the effectiveness of policies and projects.

### WVDOT LRTP Goals and Objectives were developed through the following process:

- Ensuring that WVDOT’s Mission Statement is represented in the goals.
- Researching other WVDOT plans including the Transportation Asset Management Plan, the prior WV Long Range Transportation Plan, the Freight Plan, the Rail Plan, the Bicycle Systems Plan, Transit Asset Management Plan, Human Service Coordination Plans, Public Transit Safety Plans, and the State Highway Safety Plan.
- Evaluating the Federal Planning Factors (23 CFR 450.206(a)) and the Federal Transportation Goals (23 USC 150(b)) and ensuring those factors and goals are incorporated in the proposed goals and objectives.
- Looking at peer and neighboring states' long range transportation plans
- Input from WVDOT staff and internal and external stakeholders

This research helped the LRTP team reach consensus on five goals:

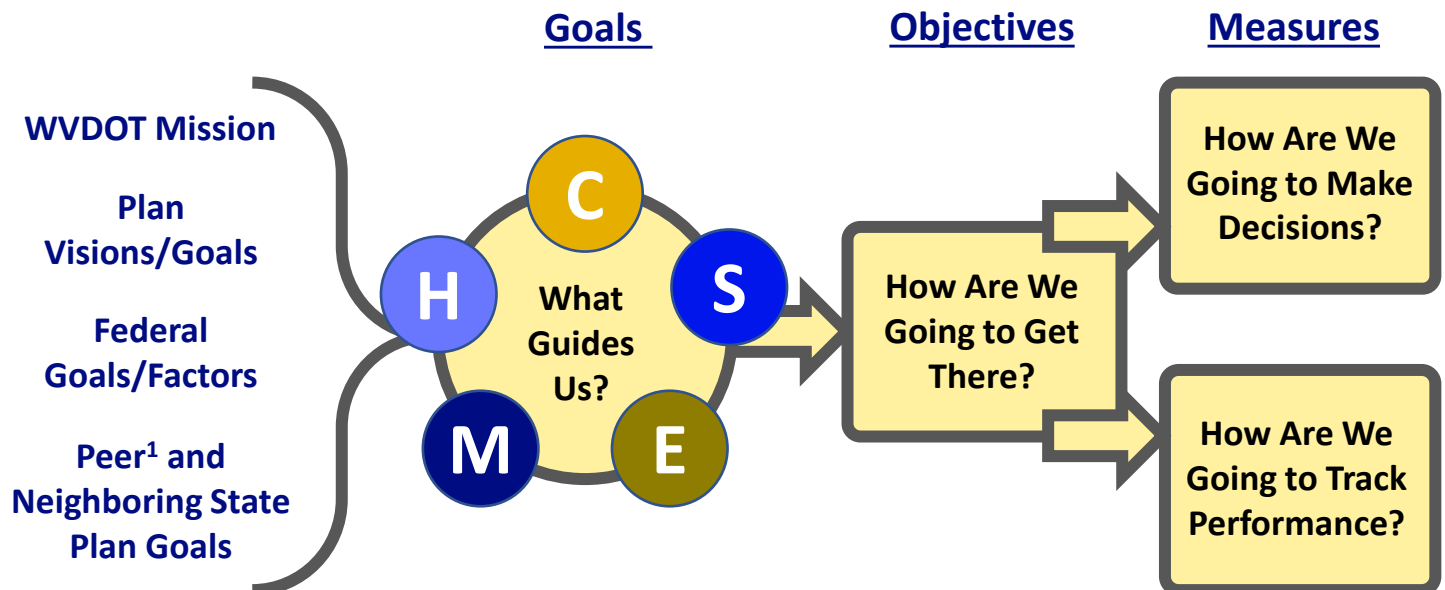
**C** System Condition, Efficiency & Fiscal Sustainability

**S** Safety and Security for All Users

**E** Economic Vitality & Freight Movement

**M** Multimodal Mobility, Reliability & Accessibility

**H** Livable & Healthy Communities



1. Peer states included Vermont, Maine, Mississippi, and North Dakota.

# STATE OF THE SYSTEM

## 2050 LRTP – GOALS AND OBJECTIVES



### West Virginia's 2050 Plan Goals and Objectives

#### System Condition, Efficiency & Fiscal Sustainability

Maintain multimodal transportation infrastructure in a state of good repair and manage lifecycle costs; efficiently deliver projects, programs and services; and work to maintain existing funding mechanisms while exploring new alternative and sustainable funding mechanisms.

**Maintain** the existing multimodal transportation system in a state of good repair

**Invest** in innovative technologies and efficient program delivery strategies

**Explore** new and sustainable revenue options

**Ensure** that WVDOT has the necessary resources to fulfill its mandate effectively and efficiently.

#### Safety and Security for All Users

Reduce transportation fatalities and serious injuries across all modes and improve the safety, security, and resilience of the multimodal transportation network for all users.

**Reduce** fatalities and serious injuries on the multimodal transportation system

**Decrease** incident clearance time and recovery

**Manage** a resilient and redundant transportation network

#### Economic Vitality & Freight Movement

Strengthen the ability of communities and industries to access national and international trade markets, retain and grow existing WV statewide and regional economic focus sectors, and support regional economic development that will diversity WV's economy.

**Improve** intermodal freight connections

**Address** bottlenecks and first-mile/last-mile access

**Expand** access to economic activity centers and emerging industries/clusters

#### Multimodal Mobility, Reliability & Accessibility

Facilitate multimodal mobility and connections for all users allowing residents and visitors to have modal options for reliable and affordable access to opportunities, including employment, education, health care, and recreation.

**Manage** recurring congestion and improve reliability on the highway system

**Enhance** multimodal transportation accessibility to key destinations and jobs

**Create** new opportunity for access to key destinations and jobs for underserved or disadvantaged populations

#### Livable & Healthy Communities

Create transportation systems that promote healthy lifestyles, operate efficiently and cleanly, protect the natural environment, and maintain access for residents and visitors to experience WV's natural and cultural destinations.

**Reduce** emissions and mitigate environmental impacts

**Coordinate** land use and transportation decisions

**Promote** and improve bicycle and pedestrian infrastructure

Contact Us: [DOT2050@wv.gov](mailto:DOT2050@wv.gov)