

2050 Multimodal Long-Range Transportation Plan

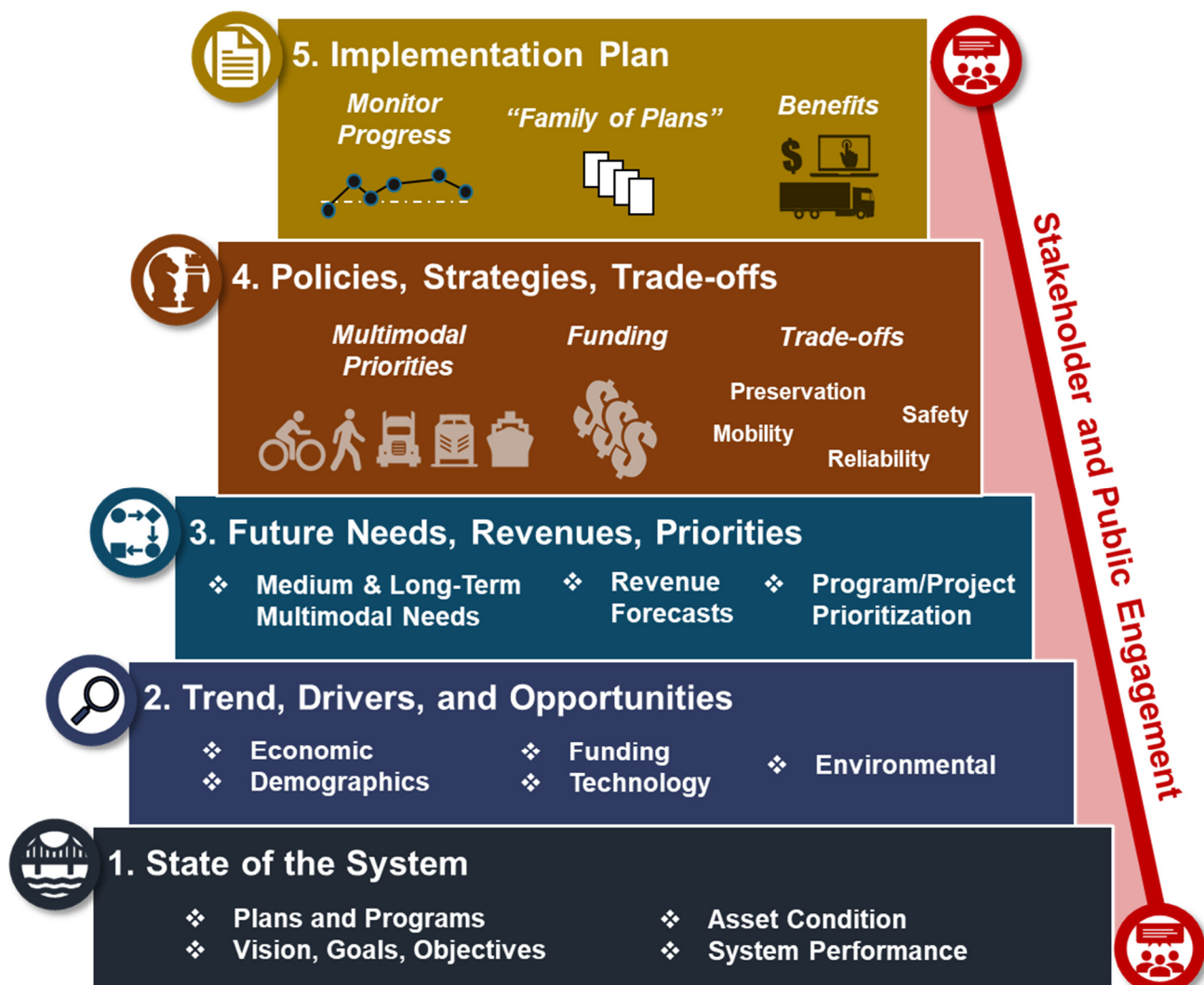
Overview and Purpose



West Virginia DOT's new statewide long-range transportation plan will help position WVDOT and the multimodal system it manages to further support WV's economy, enhance quality of life, foster safe and reliable transportation options, and better connect WV residents and businesses to opportunities.

The WVDOT is conducting an update to its statewide multimodal long-range transportation plan to help guide future transportation policies and investments. The plan will provide a 30-year blueprint to fund and improve the preservation, management, and expansion of West Virginia's multimodal transportation system.

To build this blueprint, WVDOT will work with transportation stakeholders, coordinate with Federal partners, and seek input from West Virginia residents across five study phases throughout 2020 and 2021.



2050 Multimodal Long-Range Transportation Plan Approach



A lot has changed in since development of WVDOT’s prior long range plan nearly a decade ago.

This change includes new Federal surface transportation bills (MAP-21 and the FAST Act), new statewide transportation initiatives like Roads to Prosperity, a complete evolution in the interaction of technology and transportation, demographic and economic shifts, and new areas of uncertainty, like the COVID-19 pandemic.

We will rely on the technical expertise across WVDOT and our planning partners and perspectives offered by the West Virginia business community and residents to build a Plan that is resilient to ongoing change.



Stakeholder and Public Engagement will occur throughout the plan process through a variety of outreach opportunities. Engagement will ensure that the Plan remains transparent and accessible to stakeholders, residents, and businesses and enables input to steer plan outcomes. Two stakeholder teams will help guide plan development:

Leadership Team – Made up of leaders across each WVDOT Division, the Leadership Team will review key Plan findings and provide overall direction that helps ensure that the Plan supports WVDOTs mission and creates a platform to support West Virginia’s economy and quality of life.

Policy and Technical Team – Made up of subject matter experts across WVDOT, MPOs, RPDCs, Federal partners, and other related state agencies, the Policy and Technical Team will provide specific direction, insight, data, and best practices that helps WVDOT create a comprehensive and implementable Plan.



The **State of the System** builds a platform for the rest of the Plan by detailing the current status and performance of WVs multimodal transportation system, including the goals, plans, programs, and partnerships that will shape system preservation, operations, and expansion over the coming years.



Trend, Drivers, and Opportunities focus on trends shaping transportation through 2050, including demographics, economics, technology, environment, and transportation funding. Cross-cutting issues in these topics like education, equity, public health, and resiliency will also be considered.



Future Needs, Revenues, and Priorities synthesizes the conclusions drawn from the prior two phases to help compare scenarios of future transportation revenues against prioritized multimodal transportation needs.



Policies, Strategies, and Trade-offs considers the differences between future transportation revenues and multimodal investment priorities to conduct a trade-off analysis that identifies the most critical policies, programs, and projects to meet West Virginia’s transportation goals.



The **Implementation Plan** highlights the key plan outcomes and recommendations, and identifies near term steps that WVDOT and its partners can take to propel and manage plan implementation forward over the next decade.

