

2050 Multimodal Long-Range Transportation Plan (LRTP)



Policy and Technical Team Meeting
Leadership Team Meeting
October 15, 2020

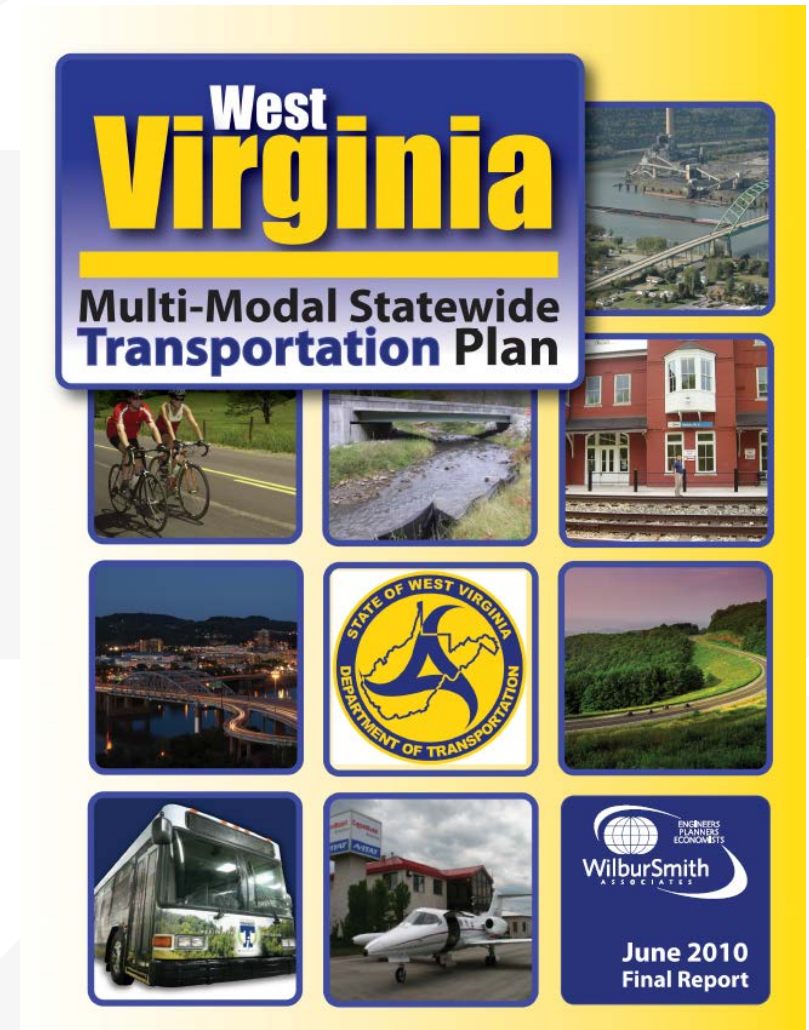
Agenda

- Introductions
- Plan Purpose
- Plan Approach and Engagement
- Vision, Goals, and Objectives
- Trends and Opportunities
- Next Steps

2050 LRTP

Why Now?

- ➔ So much has changed since the last plan...
 - » Federal Transportation Bills: [MAP-21](#) and the [FAST Act](#)
 - » Multiple new transportation initiatives in West Virginia
 - » Evolution in the interaction of technology and transportation, demographic and economic shifts, and new areas of uncertainty (COVID-19)
 - » New planning and programming tools, data, and priorities



2050 LRTP

Role of Stakeholder Teams

- **Shape Planning**
Help set a course for the next 5+ years of planning
- **Keep it Relevant**
The plan should be consistent with state priorities
- **Leverage Resources**
Build plan from existing data, tools, and plans
- **Look Forward**
A forum to address challenges and seize opportunities
- **Share the Story**
With partners to build awareness and market WV



2050 LRTP

Purpose - Guiding Principles

Framework to address the current condition of the multimodal transportation network

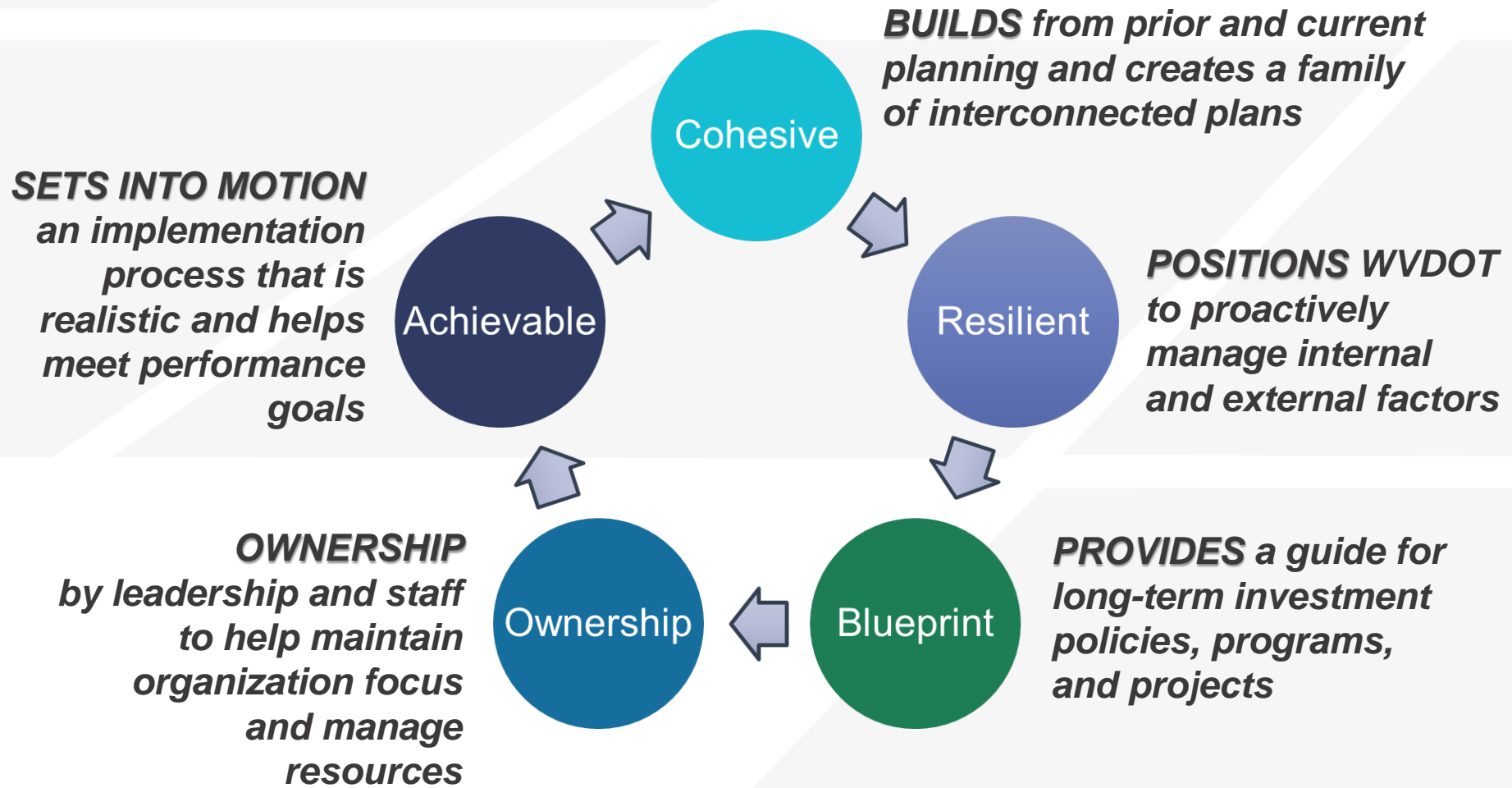
Blueprint for future multimodal transportation investments

- Meet Federal requirements and establish **best-practices for long-range planning**
- Coordinate across WVDOT Divisions to ensure a **multimodal plan supporting the movement of people and goods**
- **Engage stakeholders** for policy and technical direction
- **Deliver a transparent and accessible** planning process for the public



2050 LRTP

Purpose - Value

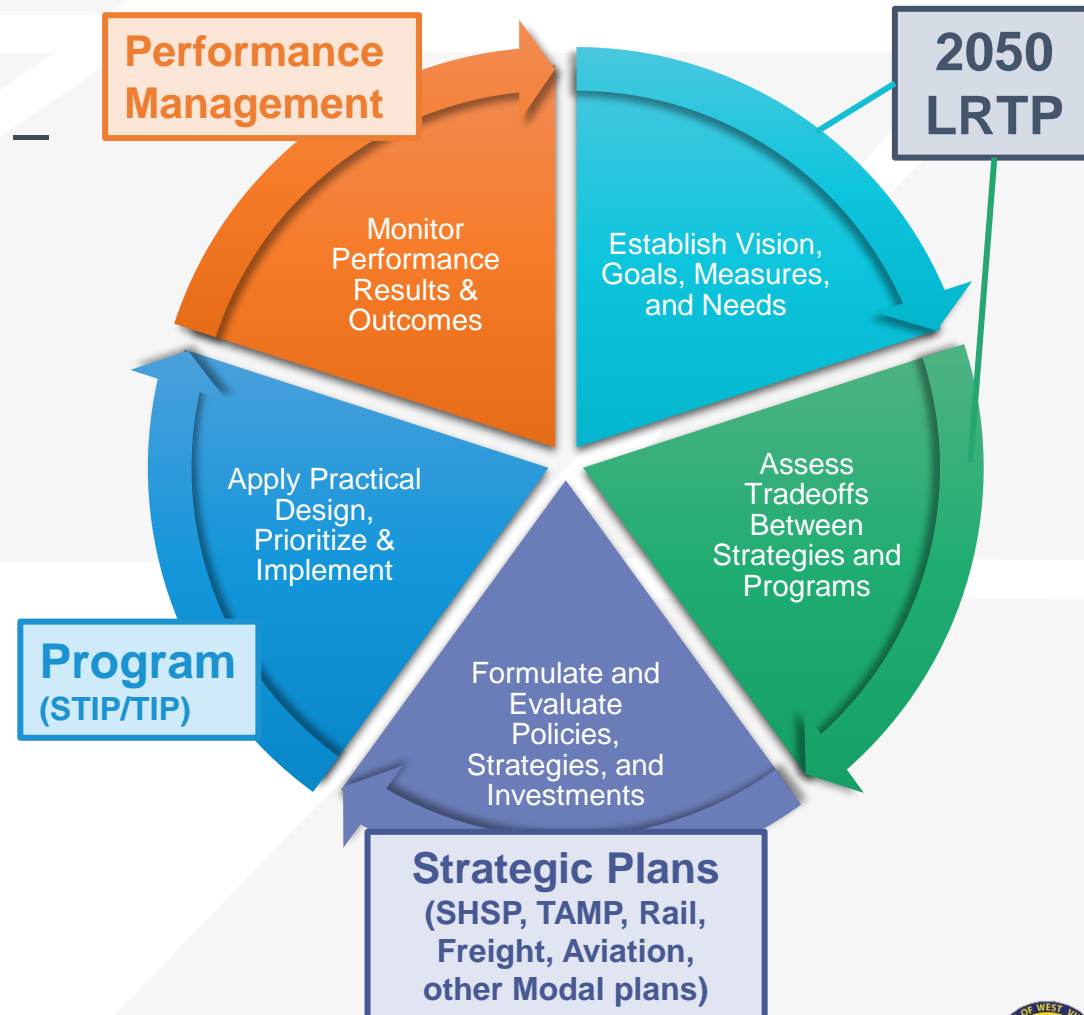


2050 LRTP

Purpose - Plan Lifecycle

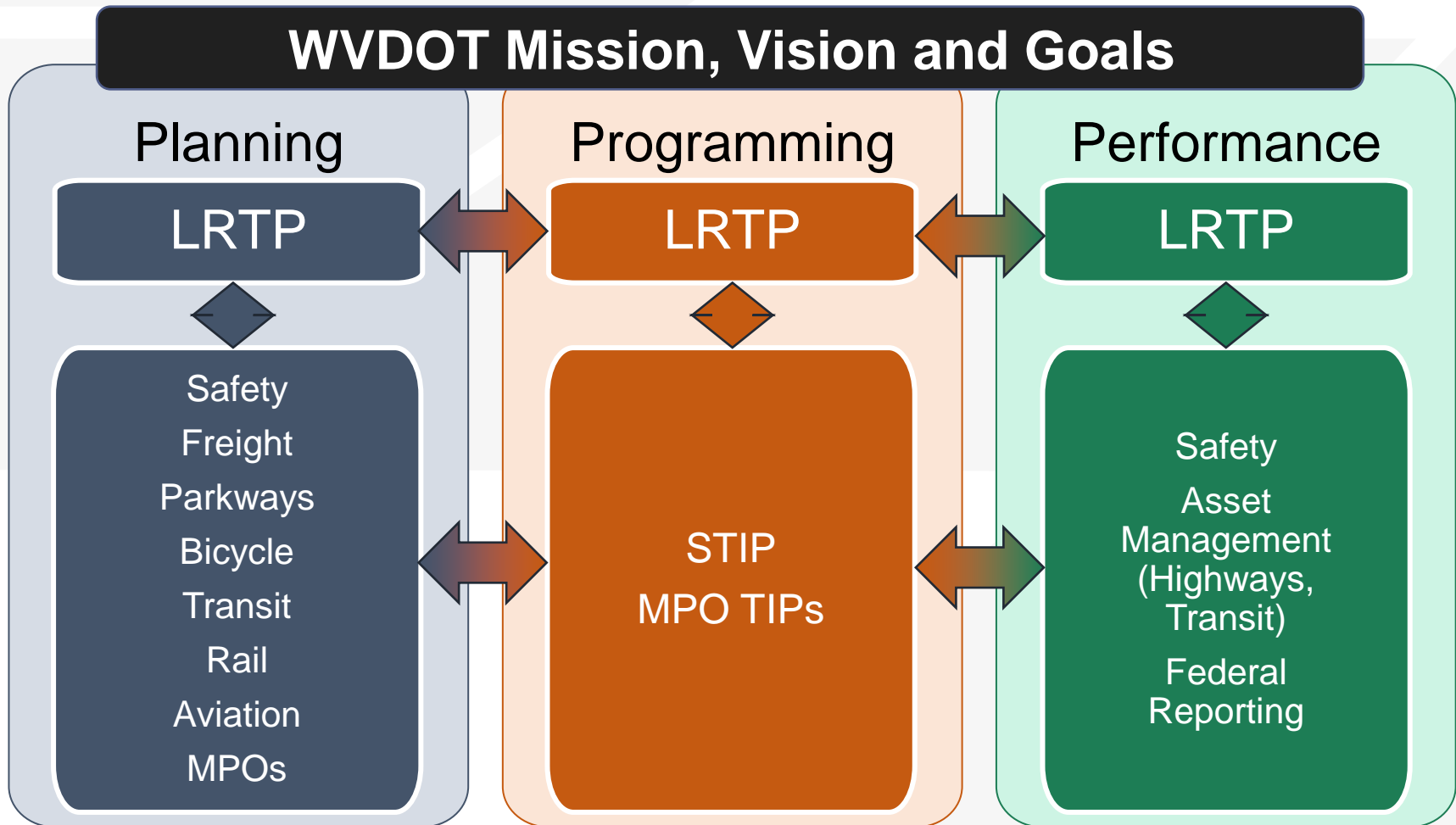
LRTP helps connect the planning – programming – performance cycle

- » Long-range plan goals, measures, and needs
- » Long-range plan strategies and programs
- » Connected to:
 - Strategic planning,
 - Programming, and
 - Performance management

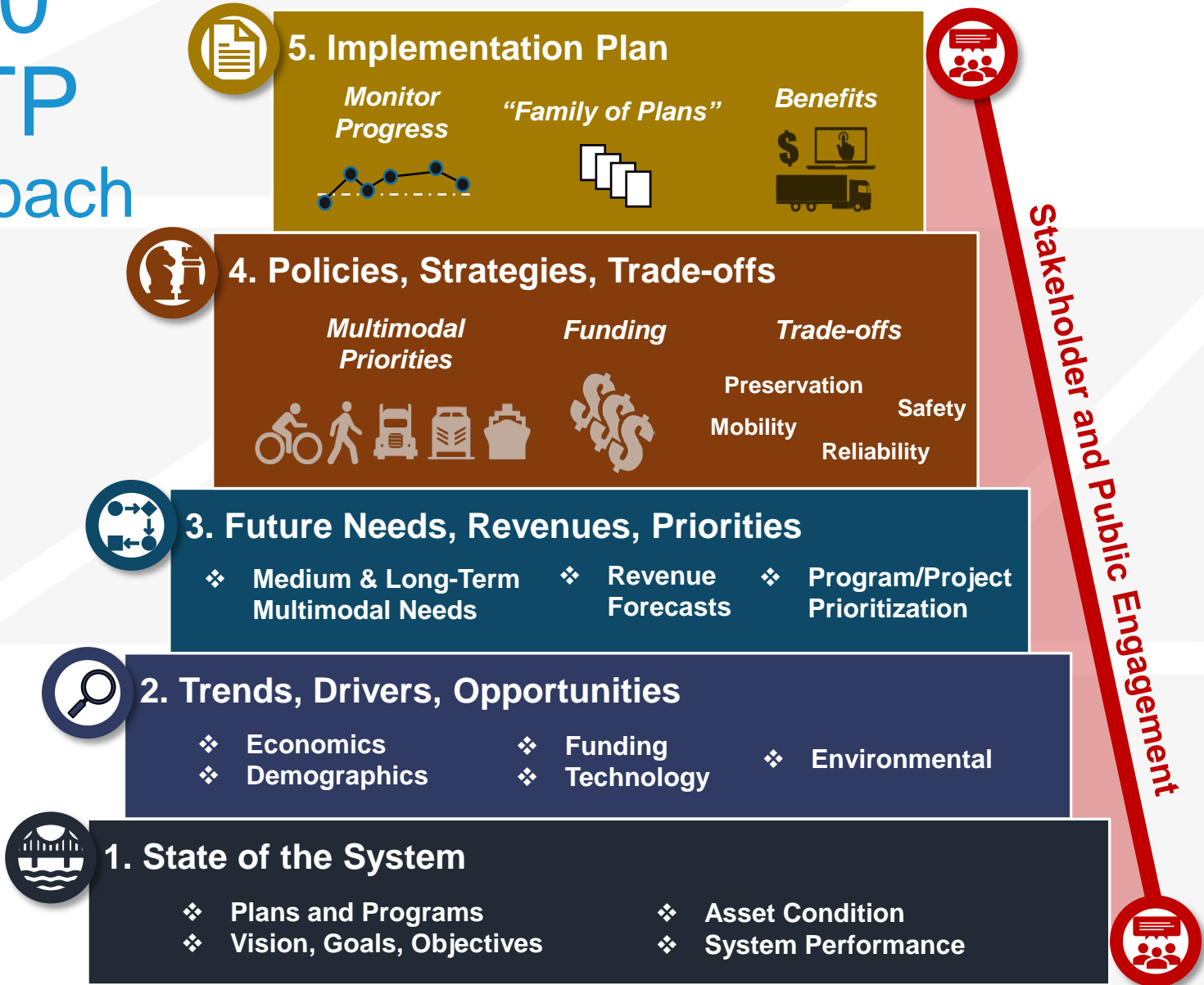


2050 LRTP

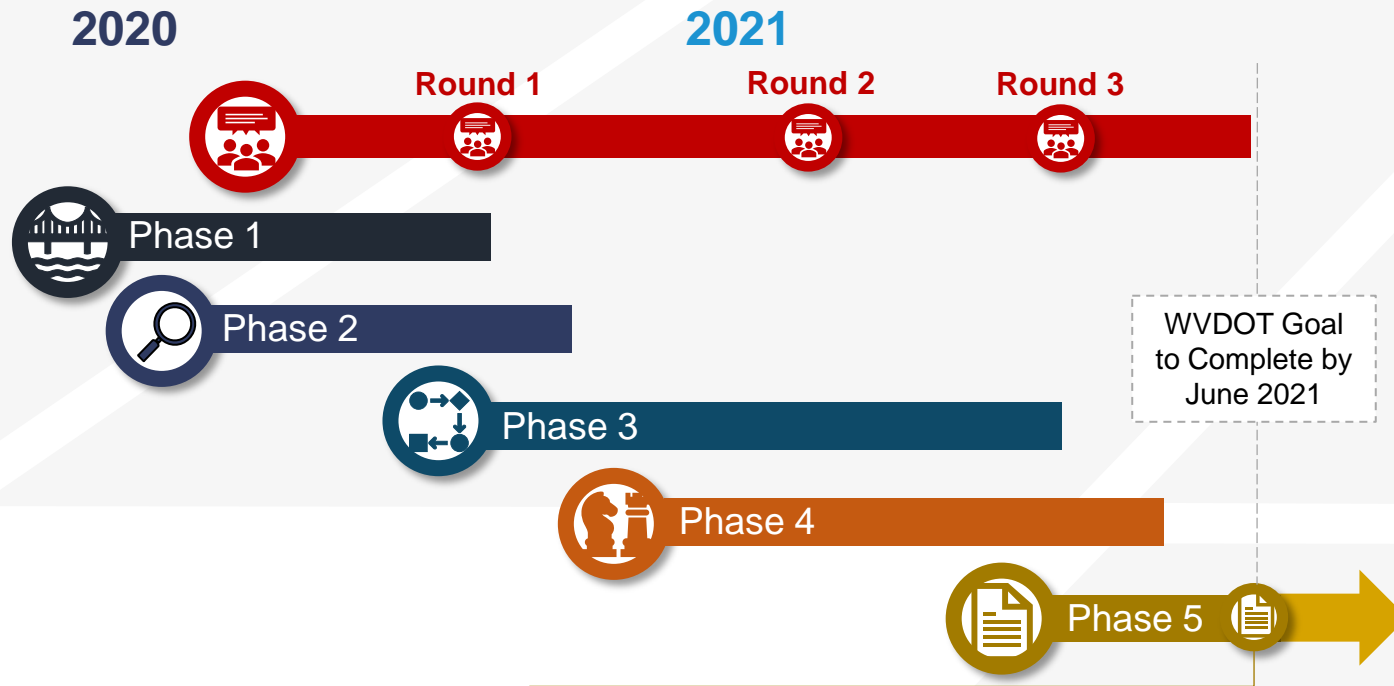
Approach – “Family of Plans” for WVDOT



2050 LRTP Approach



2050 LRTP Working Schedule



2050 LRTP

Addresses Federal requirements and documents the LRTP process, recommendations, and prioritized strategies and projects

Implementation

WVDOT approach to put the 2050 LRTP into motion



2050 LRTP

Engagement

Ensure that the Plan is transparent and accessible to stakeholders, residents, and businesses and enables input to steer plan outcomes

STAKEHOLDERS: Leadership Team & Policy and Technical Team

- Review Plan findings and provide direction
- Ensure the Plan supports WVDOTs mission and WVs economy and quality of life
- Provide insight that helps WVDOT create a comprehensive and implementable Plan
- Foster Plan awareness with Federal, state, regional and local partners

PUBLIC: WV Citizens, Businesses, and Interest Groups

- Awareness for all citizens (consistent with public participation laws, guidelines)
- Target hard to reach populations and [Title VI](#) communities
- Ability to review material and provide input
- Transparency into decision making
- Provide a voice



2050 LRTP

Engagement



Phase 3

October to January

Virtual

- » Listening sessions/workshops for federal, state, and local partners
- » Develop project website to provide information, facilitate review of Draft and Final content, surveys/polls
- » Stakeholder surveys



Phase 4

February to April

Virtual & In-Person

- » Coordinate with MPOs/ RPCs to identify events and locations across the state
- » Attend up to 10 events/ locations to discuss LRTP, solicit feedback, and answer questions
- » Continue to use virtual platforms



2050 LRTP

State of the System

WVDOT Role and Partnerships

Mission, organization, family of plans, programs and partnerships

Aviation

Bicycle and Pedestrian

Freight

Highways

Public Transportation

Describe the system, explain why it is important to WV, highlight key performance trends, and share current plans and programs

Each presented through executive summary style fact sheets

Backup with a detailed technical document with reference materials (for stakeholders, technical audiences)

Target completion and posting to website by November



2050 LRTP



State of the System – Fact Sheets

Existing Network

Existing network, facilities, statistics, and general overview

Why is it Important

Support of economic development, quality of life, tourism, health and safety, and/or other observed/potential benefits

Trends

Federal and statewide trends for that mode

Current Plans and Programs

Overview of existing plans and programs in West Virginia

Challenges, Drivers, and Opportunities

Current challenges and opportunities in West Virginia



2050 LRTP



Goals – Objectives – Measures



2050 LRTP



Draft Goals – What Guides Us?

C System Condition, Efficiency & Fiscal Sustainability

Maintain transportation infrastructure in a state of good repair and manage lifecycle costs, efficiently deliver projects, programs and services, and explore alternative and sustainable funding mechanisms.

S Safety and Security for All Users

Reduce transportation fatalities and serious injuries across all modes and improve the safety, security, and resilience of the multimodal transportation network for all users.

E Economic Vitality & Freight Movement

Strengthen the ability of communities and industries to access national and international trade markets, retain and grow existing WV statewide and regional economic focus sectors, and support regional economic development that will diversify WV's economy.

M Multimodal Mobility, Reliability & Accessibility

Facilitate multimodal mobility and connections for all users allowing residents and visitors to have modal options for reliable and affordable access to opportunities, including employment, education, health care, and recreation.

H Livable & Healthy Communities

Create transportation systems that promote healthy lifestyles, operate efficiently and cleanly, protect the natural environment, and maintain access for residents and visitors to experience WV's natural and cultural destinations.



2050 LRTP



Draft Goals and Federal Planning Factors

Federal Planning Factors

Support the **economic vitality** of the United States, the States, metropolitan areas, and nonmetropolitan areas, especially by enabling global competitiveness, productivity, and efficiency;

Increase the **safety and security** of the transportation system for motorized and non-motorized users;

Increase **accessibility and mobility of people and freight**;

Protect and enhance the **environment**, promote **energy conservation**, improve the **quality of life**, and promote consistency between transportation improvements and State and local planned growth and economic development patterns;

Enhance the **integration and connectivity** of the transportation system, across and between modes throughout the State, for **people and freight**;

Promote efficient **system management and operation**;

Emphasize the **preservation** of the existing transportation system;

Improve the **resiliency and reliability** of the transportation system and reduce or mitigate stormwater impacts of surface transportation; and

Enhance **travel and tourism**.



System Condition, Efficiency & Fiscal Sustainability

Safety and Security for All Users

Economic Vitality & Freight Movement

Multimodal Mobility, Accessibility & Reliability

Livable & Healthy Communities



2050 LRTP



Draft Goals and Objectives

Goal	Objectives
System Condition, Efficiency & Fiscal Sustainability	<p>Maintain the existing multimodal transportation system in a state of good repair</p> <p>Invest in innovative technologies and efficient program delivery strategies</p> <p>Explore new and sustainable revenue options</p>
Safety and Security for All Users	<p>Reduce fatalities and serious injuries on the multimodal transportation system</p> <p>Decrease incident clearance time and recovery</p> <p>Manage a resilient and redundant transportation network</p>
Economic Vitality & Freight Movement	<p>Improve intermodal freight connections</p> <p>Address bottlenecks and first-mile/last-mile access</p> <p>Expand access to economic activity centers and emerging industries/clusters</p>
Multimodal Mobility, Accessibility & Reliability	<p>Manage recurring congestion and improve reliability on the highway system</p> <p>Enhance multimodal transportation accessibility to key destinations and jobs</p> <p>Create new opportunity for access to key destinations and jobs for underserved or disadvantaged populations</p>
Livable & Healthy Communities	<p>Reduce emissions and mitigate environmental impacts</p> <p>Coordinate land use and transportation decisions</p> <p>Promote and improve bicycle and pedestrian infrastructure</p>

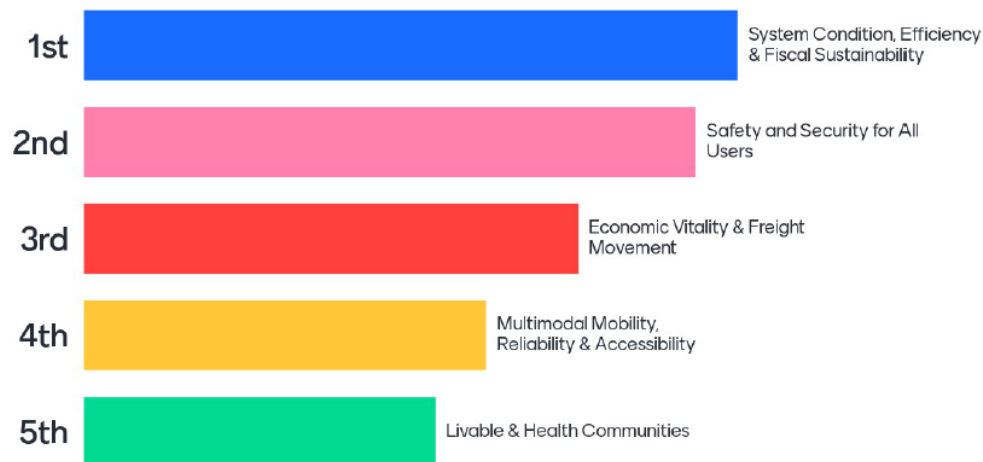


2050 LRTP



Draft Goals and Objectives – Poll Results

Please rank the five goals by level of importance to you, based on your role at your agency/organization on a scale of 1 to 5 (5 is highest).

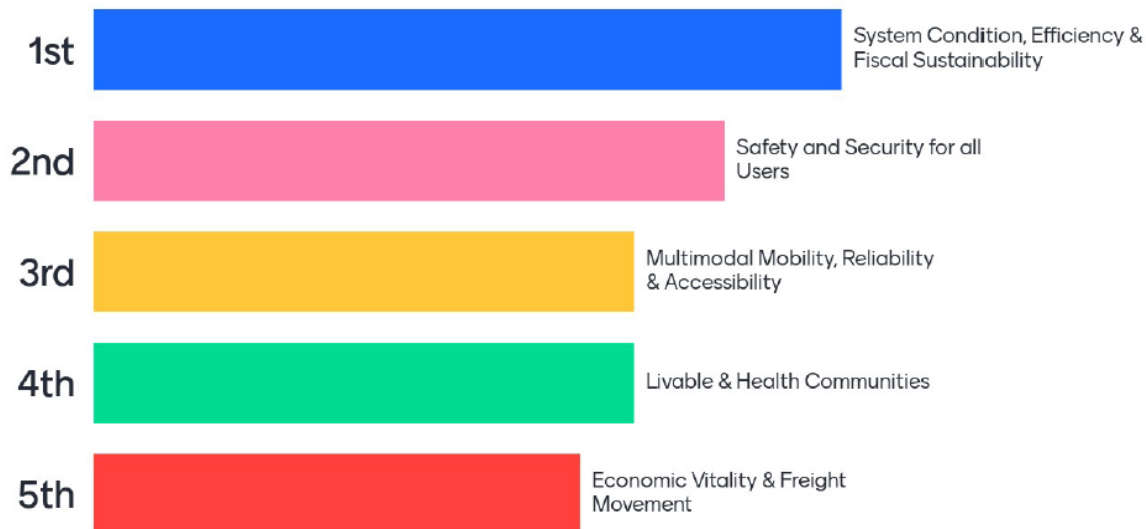


2050 LRTP



Draft Goals and Objectives – Poll Results

Please rank the five goals by level of importance to you, as a citizen of West Virginia on a scale of 1 to 5 (5 is highest).



2050 LRTP

Trends, Drivers, Opportunities

» **Introduction/Context**

Why is this relevant to WV's transportation and economic future?

» **Where Are We Today?**

What is WV's current position relative to our peers and the nation?

» **Where Are We Going?**

Where might the future take us based on current research and projections, both in WV and through regional and national perspectives?

» **Future Direction and Opportunities**

How might WV create opportunities from these trends and how can it avoid or mitigate possible risks?



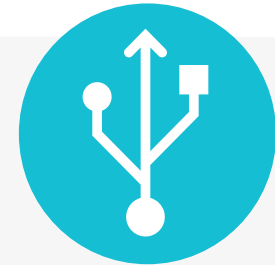
Demographics

Economics



Funding

Technology



Environment



2050 LRTP

Trends, Drivers, Opportunities

Example Issues



Demographics



Economics



Technology



Environment



Funding

	Education	Public Health	Tourism	Resiliency
Demographics	Access to transportation related fields through trade schools	Specialized programs and access for at risk communities, including seniors	Access for all WV resident groups to recreation opportunities	Maintain access to services during disruptions/events
Economics	Retaining and building a highly skilled, specialized workforce	Transportation access to foster private investment in research and development	Distribution facilities/systems enhancing access to WV products	Diversifying workforce and economy, resilient to market shocks
Technology	Broadband access, particularly for rural communities, transportation field tech. programs	Support for broader tele-health and UAS technology to support medical supply access	Autonomous shuttles and other technology enhancing access to tourist destinations	Data and transportation information/management system security
Environment	Programs fostering awareness/pride in WV resources	Programs and infrastructure that support healthy lifestyles	Preserve and protect natural and cultural resources and recreation destinations	Protect natural and cultural resources through environmental BMPs and resilient systems
Funding	New workforce education programs for transportation services, maintenance	Pilot programs for transportation and health connections	Support to existing and future programs that promote recreation, tourism	Alternative and more sustainable revenue sources

2050 LRTP

Demographics

Are These Your Top Issues? What Else?

1. Population Change + More Seniors

Revenue challenges, more on-demand mobility services

2. Commuting & Travel Pattern Shifts

Change in peak periods, increase telecommute, higher seasonal travel given more outdoor tourism

3. Public Education

Access for rural populations, transportation physically links facilities as technology supplements to provide robust training for the next generation transportation workforce

4. Public Health

Strengthen access to rural healthcare facilities and healthy food, support recreation to promote healthy lifestyles, seamless transportation improves traffic safety

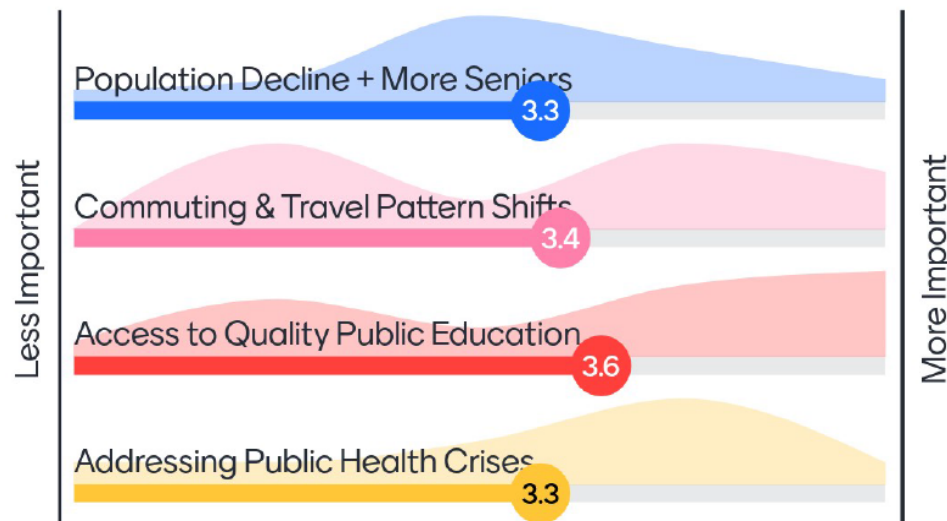


2050 LRTP

Demographics – Poll Results

Please score the importance of these four issues to assessing needs and developing strategies for the LRTP on a scale of 1 to 5 (1 lowest, 5 highest).

 Mentimeter



2050 LRTP



Economics

Are These Your Top Issues? What Else?

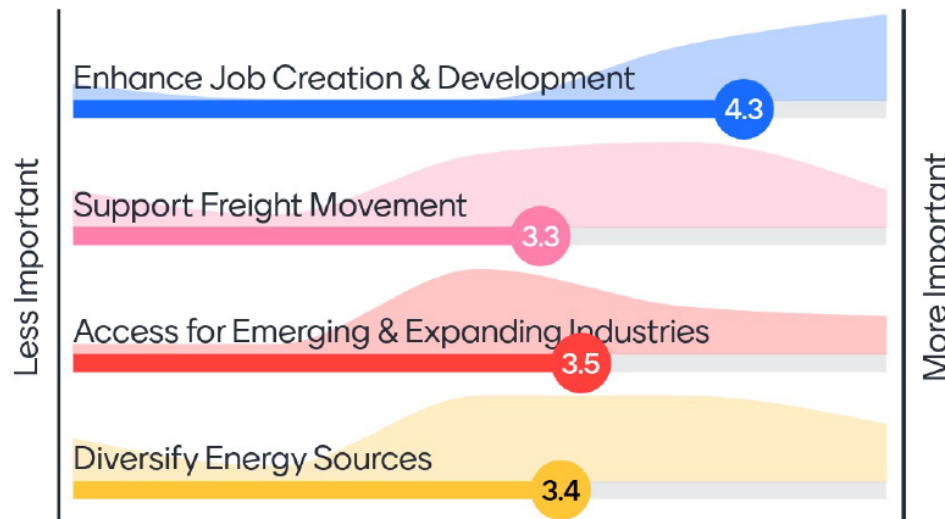
- 1. Enhance Job Creation & Development**
Workforce training, corporate relocations
- 2. Support Freight Movement**
Deliver food & fuels, provide access to resources, strengthen exports & trade, maintain key routes
- 3. Access for Emerging & Expanding Industries**
Chemical/pharmaceutical manufacturing to support healthcare, outdoor tourism, leveraging technology
- 4. Diversify energy sources**
Increase energy resilience, expand access for suppliers and distributors, promote clean sources

2050 LRTP

Economics – Poll Results

Please score the importance of these four issues to assessing needs and developing strategies for the LRTP on a scale of 1 to 5 (5 is highest).

 Mentimeter



2050 LRTP

Technology

Are These Your Top Issues? What Else?

1. Bridge the Digital Divide

Implement “Dig Once” policy to facilitate high speed broadband access to underserved communities

2. Expand Partnerships

Increase coordination with neighbor states, private sector, Appalachian Regional Commission, and universities

3. Internal Awareness

Coordinate technology decisions which cut across “silos” and leverage agency performance

4. Do Nothing Implications

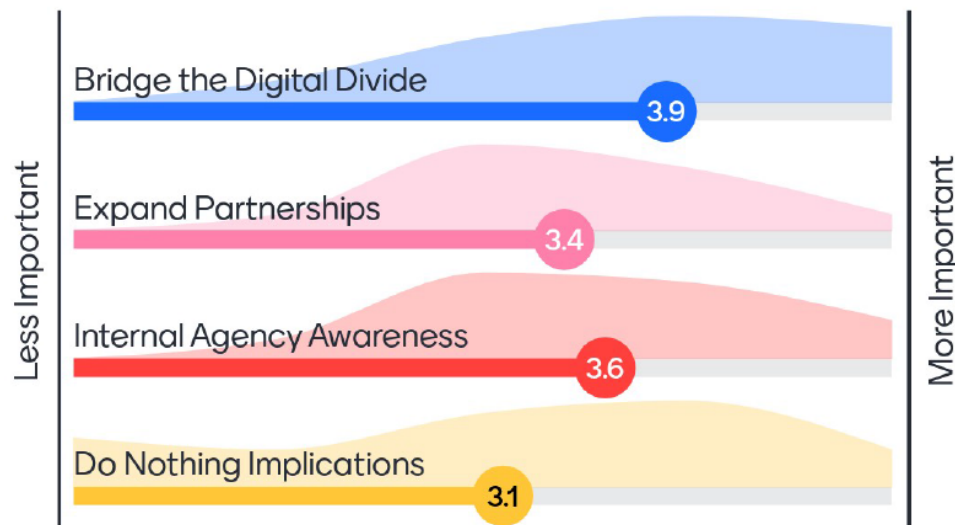
Risk of missed opportunities, potential for higher operator and traveler costs

2050 LRTP

Technology – Poll Results

Please score the importance of these four issues to assessing needs and developing strategies for the LRTP on a scale of 1 to 5 (5 is highest).

Mentimeter



2050 LRTP

Environment

Are These Your Top Issues? What Else?

1. Prepare for Environmental Resiliency

Green infrastructure, asset and network vulnerability assessments, stormwater management

2. Operations and Maintenance of Infrastructure

Asset management principles, innovative materials and operation technologies

3. Increase Environmental Tourism

Support improved access to natural lands while fostering protection of resources

4. Enable New Technology

Environmental benefits of electric and alternative fuel vehicles

2050 LRTP

Environment – Poll Results

Please score the importance of these four issues to assessing needs and developing strategies for the LRTP on a scale of 1 to 5 (5 is highest).



2050 LRTP

What's Next: Phase 3 – Phase 4

Future Needs, Revenues, Priorities

Synthesizes Phase 1 and 2 to help compare scenarios of future transportation revenues to multimodal transportation needs statewide and within urban and rural regions through 2050.

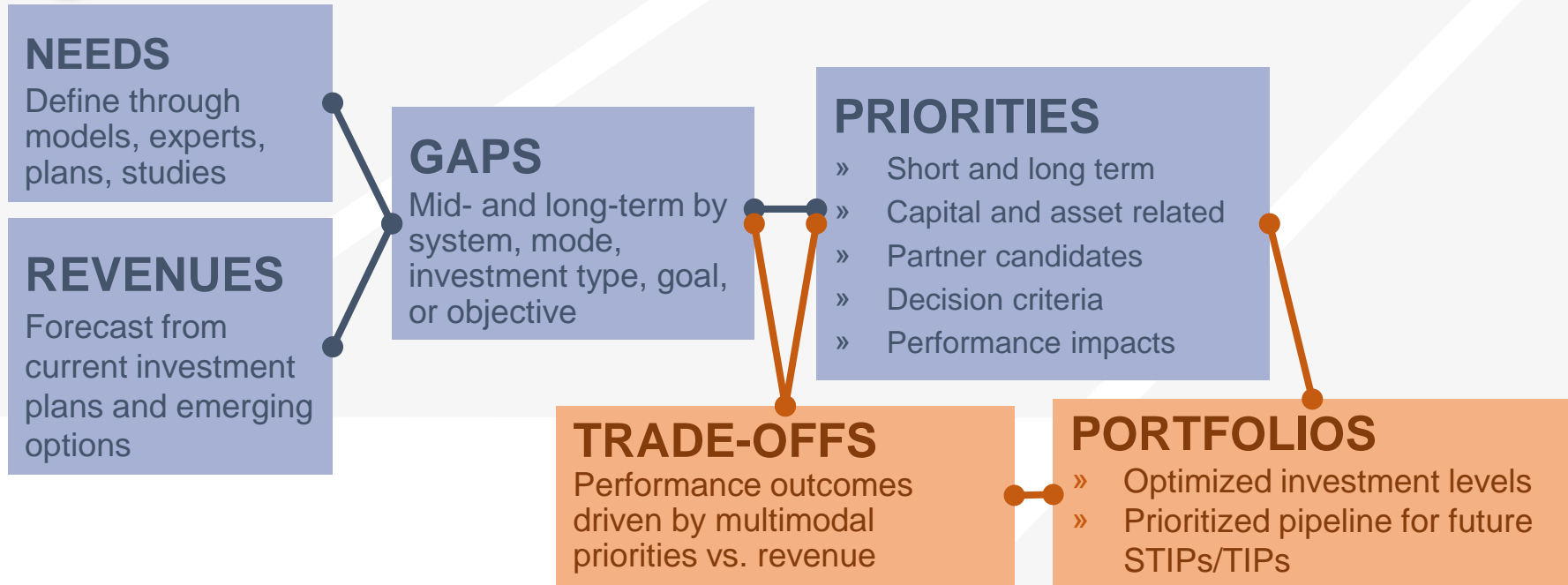
Policies, Strategies, Trade-offs

Considers the differences between future transportation revenues and multimodal investment priorities to help WVDOT use existing and new tools to develop portfolios to attain performance goals.

2050 LRTP



Phase 3 – Synthesis to compare scenarios of future revenues against multimodal needs



Phase 4 – Identify most critical policies, programs and projects to meet WV transportation goals



2050 LRTP

Next Steps: October-November

- [LRTP website](#)
- Refine coordination and engagement plan
- Confirm 2050 LRTP goals and objectives
- Share draft and final **State of the System** fact sheets
- Share draft and final **Trends, Drivers, Opportunities** white papers and fact sheets
- Phase 3/Phase 4 startup

Next meeting: Jan/Feb 2021
(Phase 3 outcomes, Phase 4 strategy development)

Contacts:

Project Manager

Chris Kinsey, P.E.

Statewide Planning Section Head

Planning Division, WVDOH

Chris.J.Kinsey@wv.gov

304 414-6926

Elwood Penn, P.E.

Director

Planning Division, WVDOH

Elwood.C.Penn@wv.gov

304 414-6933