

# FACT SHEET – NEEDS BY MODE

## HIGHWAY OPERATIONS



### CONNECTIONS TO LRTP GOALS

**S** Safety & Security for All Users

**C** System Condition, Efficiency & Fiscal Sustainability

**E** Economic Vitality & Freight Movement

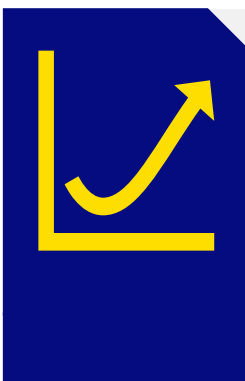
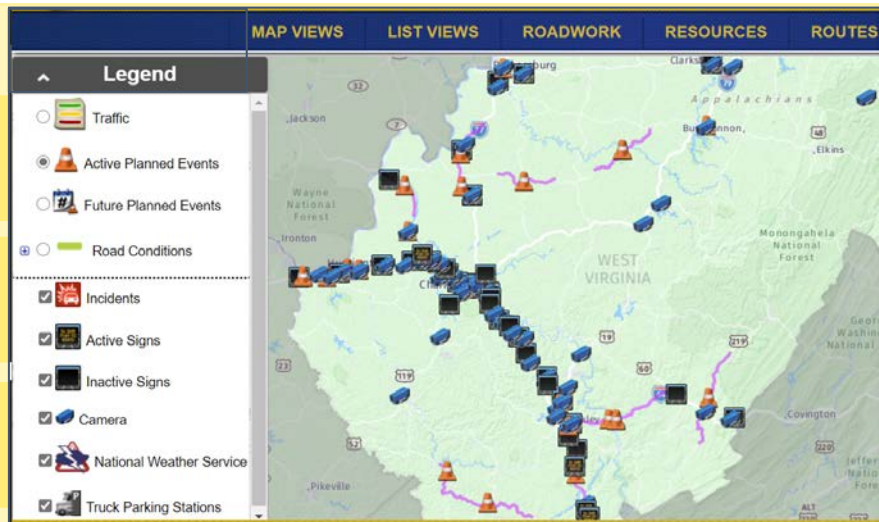
Highway operations include digital message signs, cameras, and other technology to help WVDOT identify and manage incidents. WVDOT spends \$1.8M per year maintaining these important systems. These network investments combined with localized needs (turn lanes, signal synchronization) are cost effective methods to optimize highway capacity, enhance safety and improve travel time reliability for commuters and statewide commerce.

### STAKEHOLDER INPUT

Highway operations is seen as the third-most important need category

WVDOT and MPO employees agree about the importance of highway mobility and operations

Highway operations is considered more important on urban roads compared to rural roads



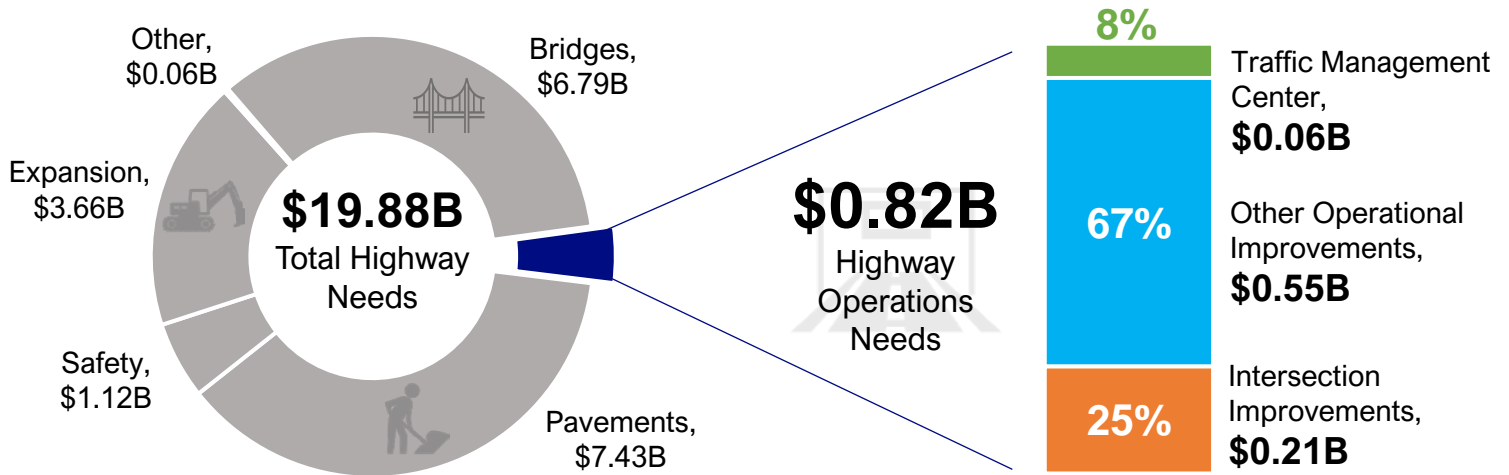
To forecast highway operations needs, projects were identified through WVDOT and WV MPO sources scoped to enhance traffic movement without adding major capacity (turn lanes, intersection redesigns, signal timing). These projects were combined with yearly estimates to maintain traffic management infrastructure and address installation of new infrastructure in the future.

### FORECASTING METHOD

Sources considered: [West Virginia Multi-Modal LRTP \(2010\)](#); [West Virginia 2018 State Freight Plan](#), Current MPO Long-Range Plans from [BHJ MPC](#), [BOMTS](#), [FRMPO](#), [HEPMPO](#), [KYOVA](#), [MMMPO](#), [RIC](#), [WWW IPC](#), and WV Traffic Engineering Division

# FACT SHEET – NEEDS BY MODE

## HIGHWAY OPERATIONS



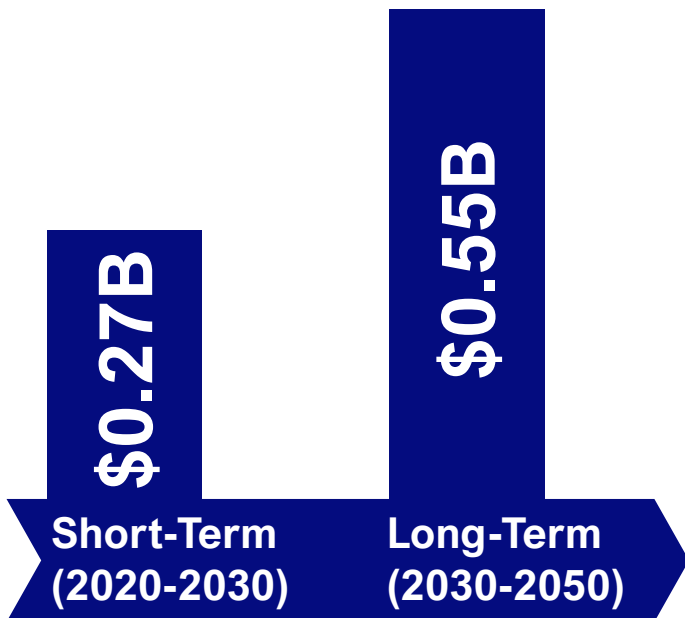
### OPPORTUNITIES

Advance a Transportation System Maintenance and Operations (TSMO) Plan and leverage WVDOH's Statewide Traffic Control Device Maintenance Program to promote innovative project delivery.

### TRENDS AND EMERGING NEEDS

Emerging technologies including automated and connected vehicles, alternative energy sources and intelligent transportation systems (ITS) will push the need for increased funding, research, and development to cultivate a "technology awareness" culture.

### SHORT-TERM AND LONG-TERM FORECASTS



- Assess WVDOT roles and responsibilities related to the integration of technology and transportation. Establish available funding sources to implement these connections within multiple departments
- Complete and implement a TSMO Plan
- Continue funding the Traffic Management Center and Traffic Incident Management Program
- Employ new ITS technology to more efficiently manage intersections and maximize the capacity of roadways without adding new lanes