



WELCOME



EXIT 99, WESTON

**Informational Workshop
Public Meeting**

**Peterson-Central Elementary School
Tuesday, December 9
4:00pm to 7:00pm**



U.S. Department
of Transportation
**Federal Highway
Administration**



EXIT 99

WESTON INTERCHANGE WITH US 33

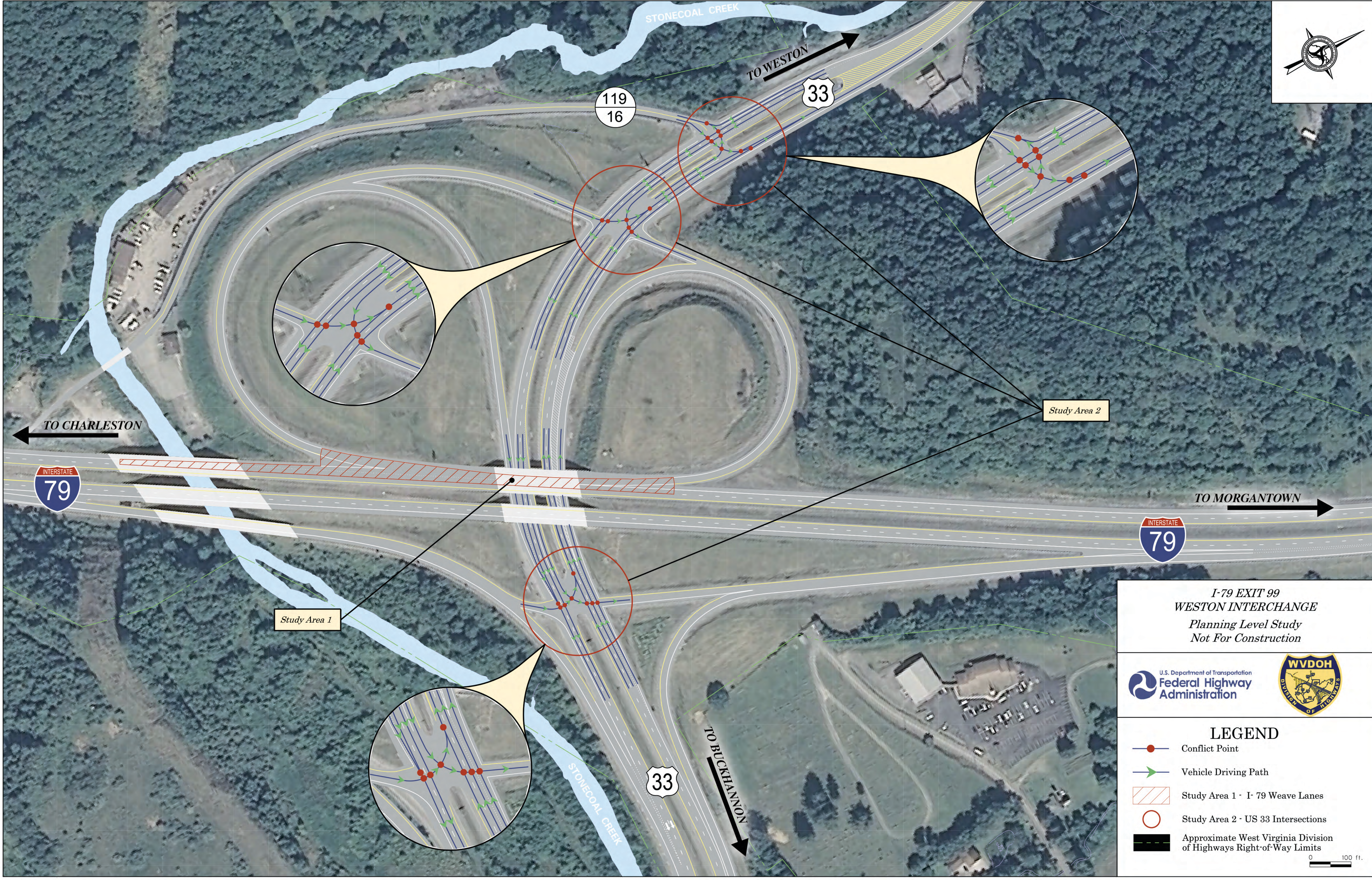
- > Planning-level study to identify potential improvements
- > Currently evaluating options to improve I-79 southbound entrance/exit weave
- > Improve traffic flow
- > Increase in Average Daily Traffic (ADT) as Corridor H segments are completed
- > US 33 configuration at interchange

*Public involvement for a WVDOT Planning Study is important!
Thank you for coming!*



EXIT 99, WESTON

EXISTING CONDITIONS



*I-79 EXIT 99
WESTON INTERCHANGE
Planning Level Study
Not For Construction*

U.S. Department of Transportation
Federal Highway Administration

WVDOH
DIVISION OF HIGHWAYS

LEGEND

- Conflict Point
- Vehicle Driving Path
- Study Area 1 - I-79 Weave Lanes
- Study Area 2 - US 33 Intersections
- Approximate West Virginia Division of Highways Right-of-Way Limits

0 100 ft.



EXIT 99, WESTON

TRAFFIC DATA





EXIT 99, WESTON

CONCEPTUAL ALTERNATIVE 1



EXISTING I-79 SOUTHBOUND OFF-RAMPS TO BE REMOVED & RELOCATED

LANE TO WESTON

LANE TO BUCKHANNON

RELOCATED I-79 SOUTHBOUND OFF-RAMP

Estimated Engineering & Construction Cost
\$15.4 Million

- Goals of Conceptual Alternative 1:*
- 1. Eliminate weave area on I-79 Southbound*
 - 2. Reduce potential left turn conflicts on US 33 at the convergence of the I-79 off and on ramps.*

*I-79 EXIT 99
WESTON INTERCHANGE
Planning Level Study
Not For Construction*



LEGEND

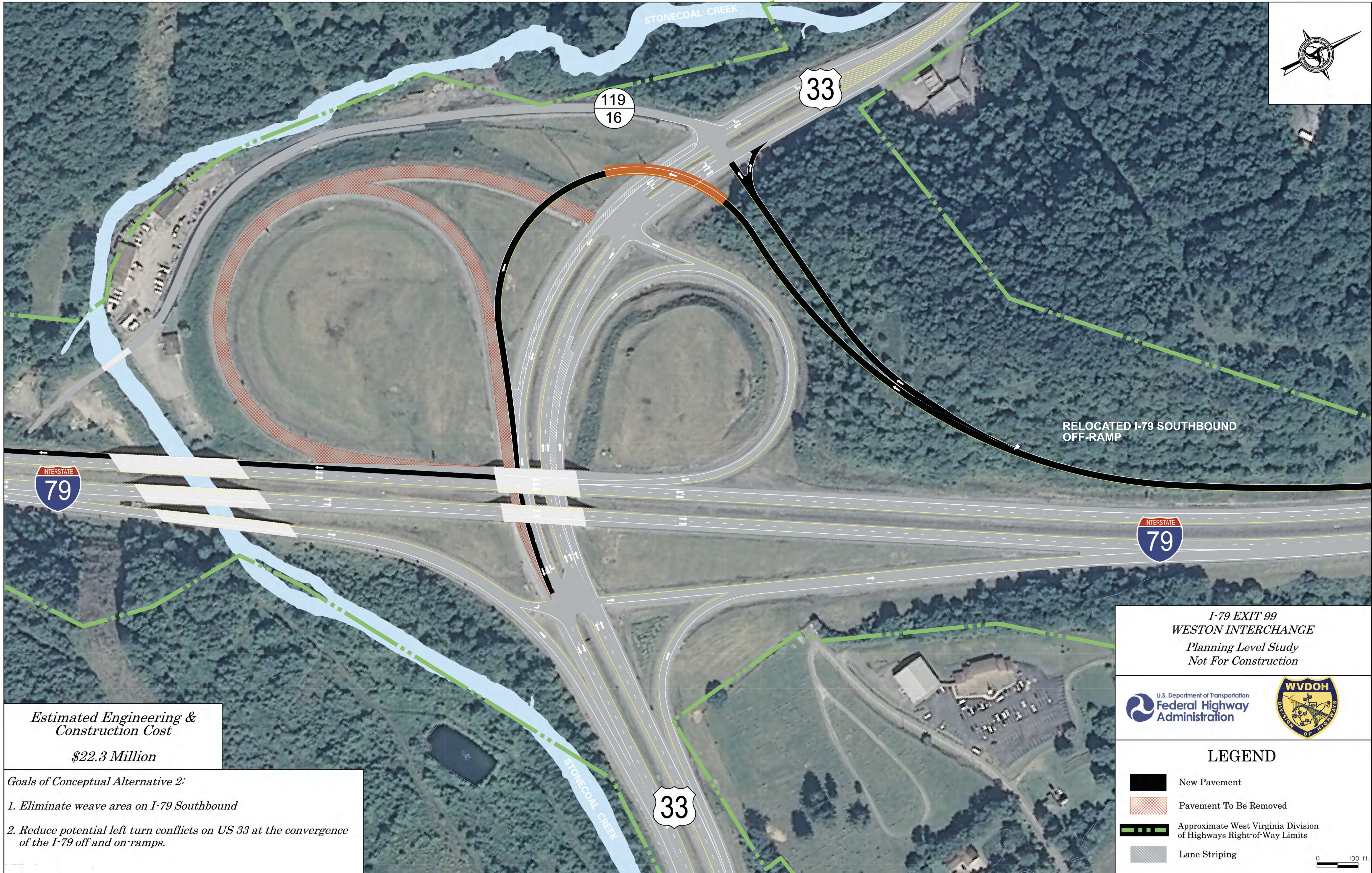
- New Pavement
- Pavement To Be Removed
- Approximate West Virginia Division of Highways Right-of-Way Limits
- Bridge Widening

0 100 ft.



EXIT 99, WESTON

CONCEPTUAL ALTERNATIVE 2



Estimated Engineering & Construction Cost
\$22.3 Million

- Goals of Conceptual Alternative 2:*
- 1. Eliminate weave area on I-79 Southbound*
 - 2. Reduce potential left turn conflicts on US 33 at the convergence of the I-79 off and on-ramps.*

*I-79 EXIT 99
 WESTON INTERCHANGE
 Planning Level Study
 Not For Construction*



LEGEND

- New Pavement
- Pavement To Be Removed
- Approximate West Virginia Division of Highways Right-of-Way Limits
- Lane Striping

0 100 ft.



EXIT 99, WESTON

CONCEPTUAL ALTERNATIVE 3



Estimated Engineering & Construction Cost
\$24.4 Million

- Goals of Conceptual Alternative 3:*
- 1. Eliminate weave area on I-79 Southbound*
 - 2. Reduce potential left turn conflicts on US 33 at the convergence of the I-79 off and on-ramps.*

*I-79 EXIT 99
WESTON INTERCHANGE
Planning Level Study
Not For Construction*



LEGEND

- New Pavement
- Pavement To Be Removed
- Approximate West Virginia Division of Highways Right-of-Way Limits

0 100 ft.



EXIT 99, WESTON


NO-BUILD ALTERNATIVE

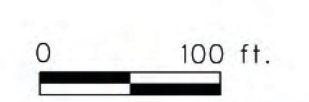


*I-79 EXIT 99
WESTON INTERCHANGE
Planning Level Study
Not For Construction*



LEGEND

 Approximate West Virginia Division of Highways Right-of-Way Limits



Estimated Engineering & Construction Cost
\$0.00

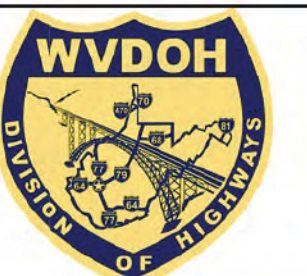


EXIT 99, WESTON


OPERATIONAL IMPROVEMENTS

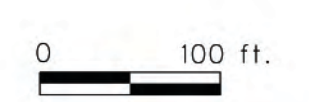


*I-79 EXIT 99
WESTON INTERCHANGE
Planning Level Study
Not For Construction*



LEGEND

 Approximate West Virginia Division of Highways Right-of-Way Limits



*Estimated Engineering & Construction Cost
TO BE DETERMINED*



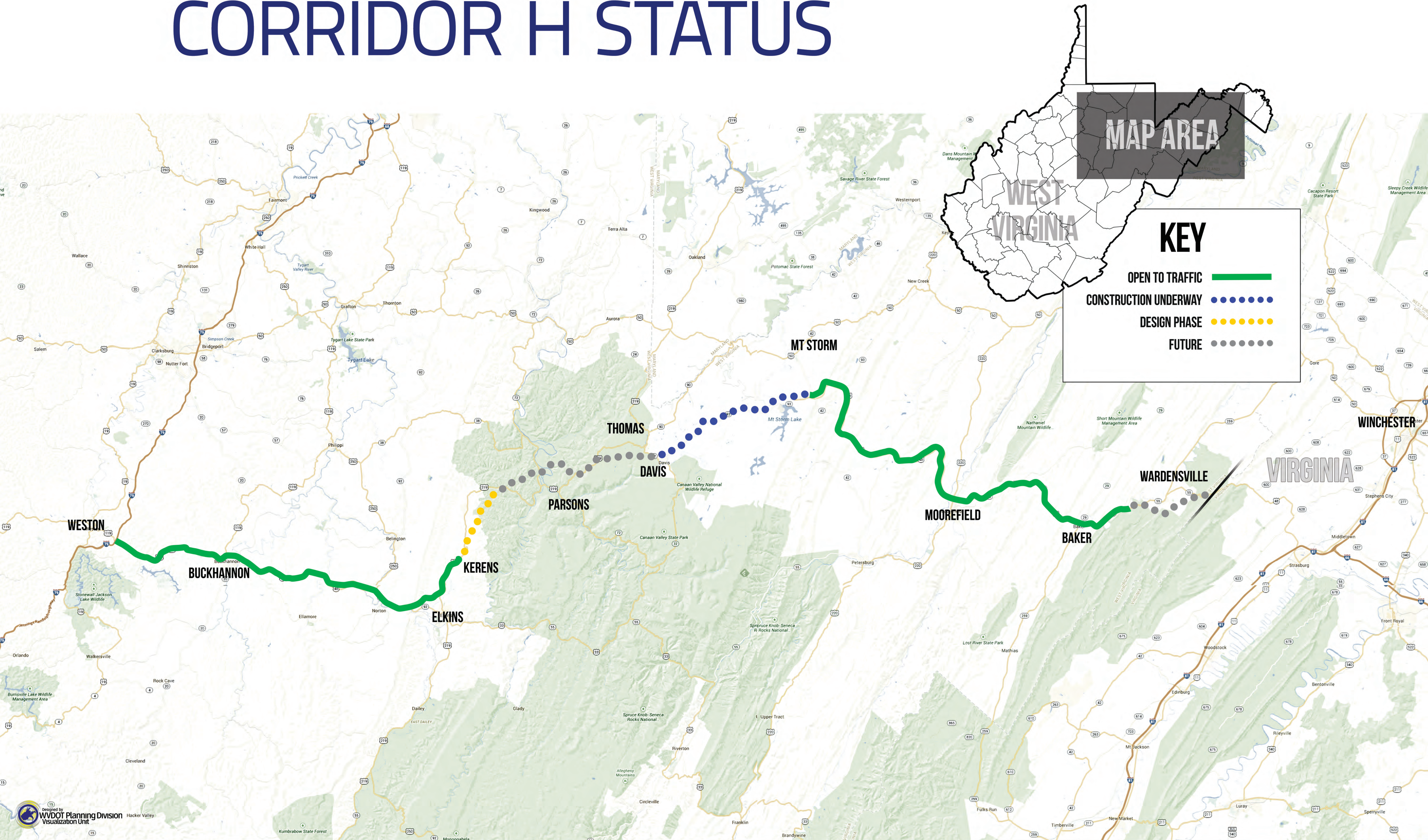
EXIT 99, WESTON - AREA FEATURES



KEY

- FLOODPLAIN, 100-YR
- PERENNIAL STREAM
- TRAFFIC SIGNAL
- BUILDING
- CEMETERY

CORRIDOR H STATUS



MAP AREA

WEST VIRGINIA

KEY

- OPEN TO TRAFFIC
- CONSTRUCTION UNDERWAY
- DESIGN PHASE
- FUTURE