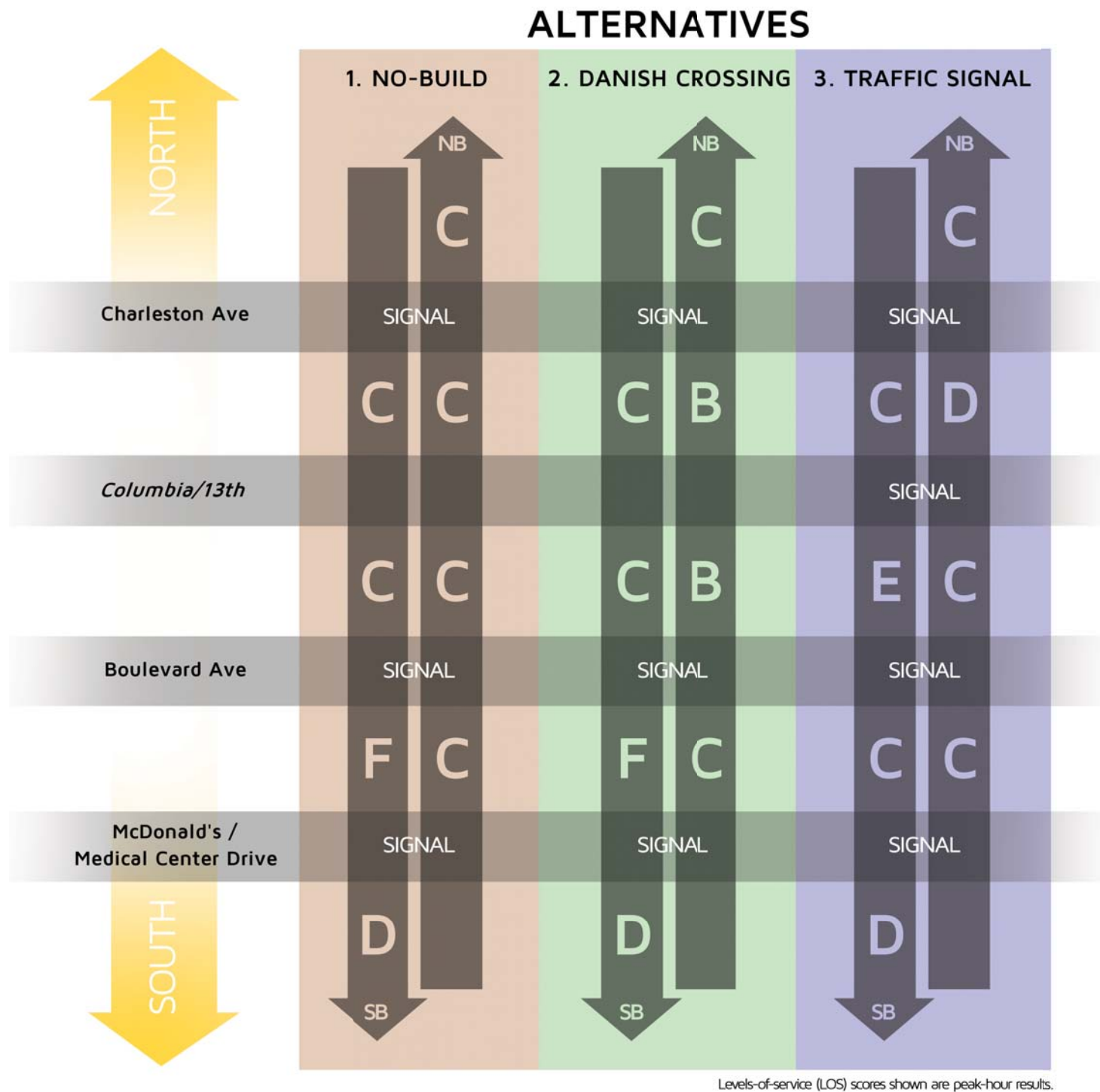
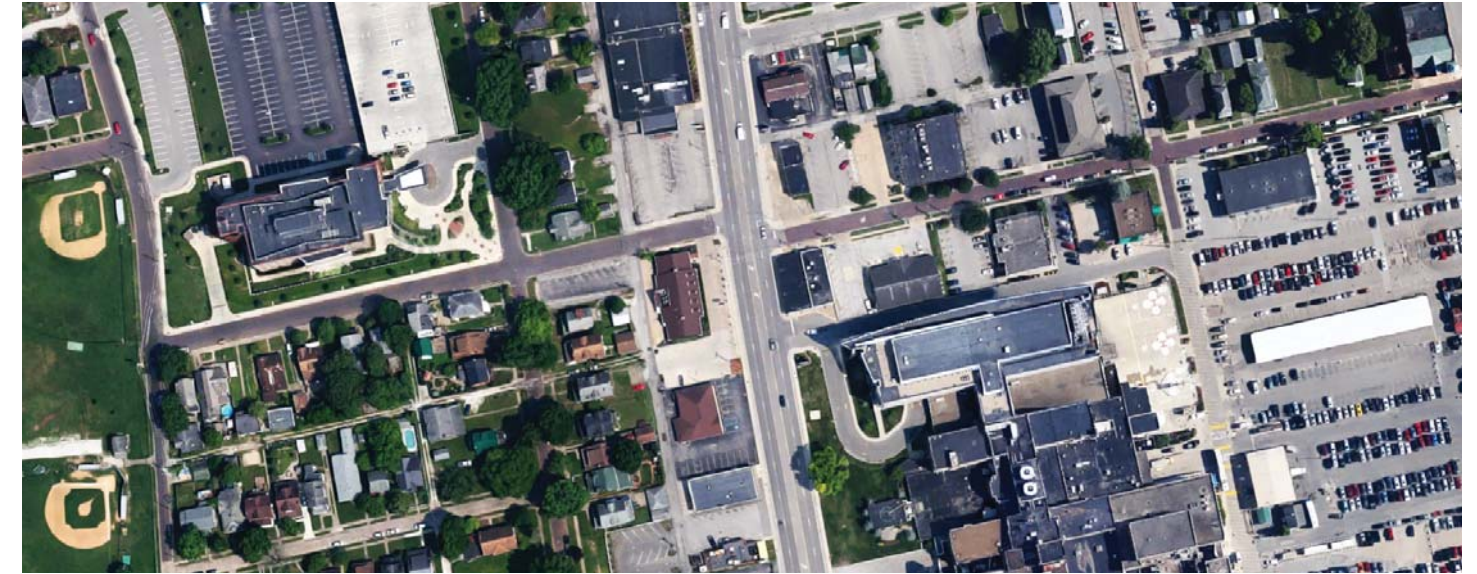
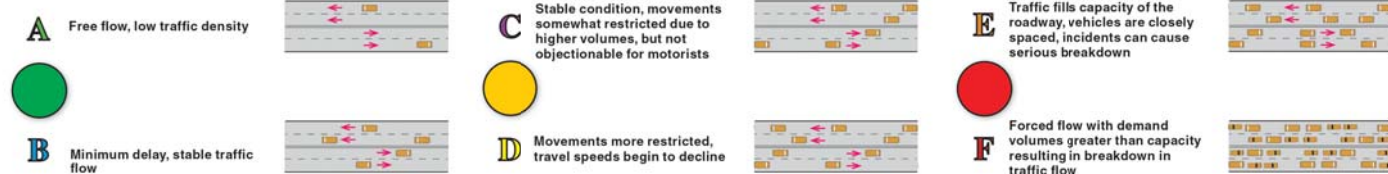


HAL GREER BOULEVARD CORRIDOR PEAK-HOUR LEVEL-OF-SERVICE BY ROADWAY SEGMENT



What does "Level-Of-Service" mean?

In short, it's a performance "score" that represents quality of service, like this:



ABOUT THE HAL GREER BOULEVARD IMPROVEMENTS PROJECT AT COLUMBIA AVENUE AND 13TH AVENUE

The West Virginia Department of Transportation in cooperation with KYOVA Interstate Planning Commission and the Federal Highway Administration is seeking comments regarding the consideration of alternatives for improving pedestrian movements on Hal Greer Boulevard (WV10) at its intersection with Columbia and 13th Avenues, in the vicinity of Joan C. Edwards Medical Center.

There are three alternatives being considered:

- 1. No-Build Alternative.** This means a viable alternative would not have been identified and no changes would be made to the current operating conditions at this time.
- 2. "Danish" Pedestrian Crossing.** This build alternative would provide a raised median refuge area without traffic signal control of vehicular traffic and would eliminate all left turns. This is the Preferred Alternative.
- 3. Traffic Signal Control.** This build alternative would consist of a typical traffic signal common to many urban intersections, including crosswalks and button-actuated pedestrian phases.

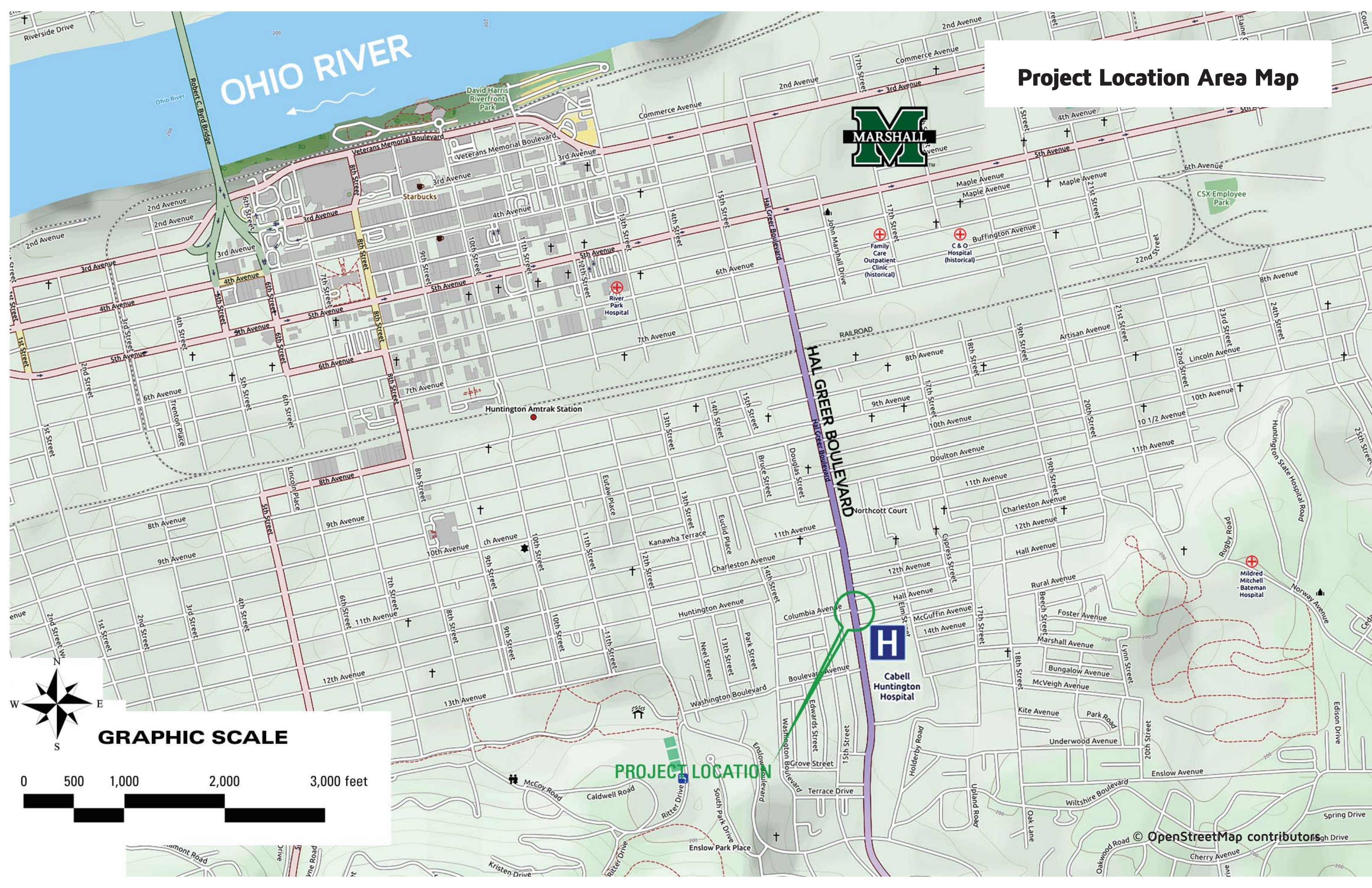
Notable information about this location include:

- » Average Daily Traffic (2015): about 19,000 vehicles per day
- » Multiple studies have been conducted recently related to traffic flow, connectivity to Downtown, and safety.
- » A Corridor Management Plan is planned for the entire Hal Greer Boulevard (WV10) corridor from I-64 to 3rd Avenue.

Project information, including a place for comments, can also be viewed on the West Virginia Division of Highways website at go.wv.gov/dotcomment in the "planning studies" section. Alternatively, comments regarding the project may be mailed to the West Virginia Division of Highways at the address listed below on or before November 8, 2016:

Mr. Richard L. Warner, P.E.
Director, Planning Division
West Virginia Division of Highways
1900 Kanawha Blvd E, Building 5, Room 450
Charleston, West Virginia 25305-0430

Project Location Area Map



PROJECT LOCATION

GRAPHIC SCALE

