

Goals and Objectives

Mobility Goal: Improve access between WV 9 and the airport area / I-81 while alleviating congestion on area roadways.

Objectives include:

- Reduce traffic on WV 45 by providing an alternate access to I-81
- Provide additional access to the Tabler Station area
- Improve multimodal connectivity by facilitating improved transit service, bicycle/ pedestrian accommodations and access to the Eastern West Virginia Regional Airport

Safety Goal: Improve the level of safety for motorists in the study area.

Objectives include:

- Reduce truck traffic along WV 45 and other major arterials by providing an alternate route
- Divert traffic away from or make improvements to high crash locations
- Improve bicycle / pedestrian safety by providing appropriate accommodations

Economic Development Goal: Support planned development and promote future growth in the area.

Objectives include:

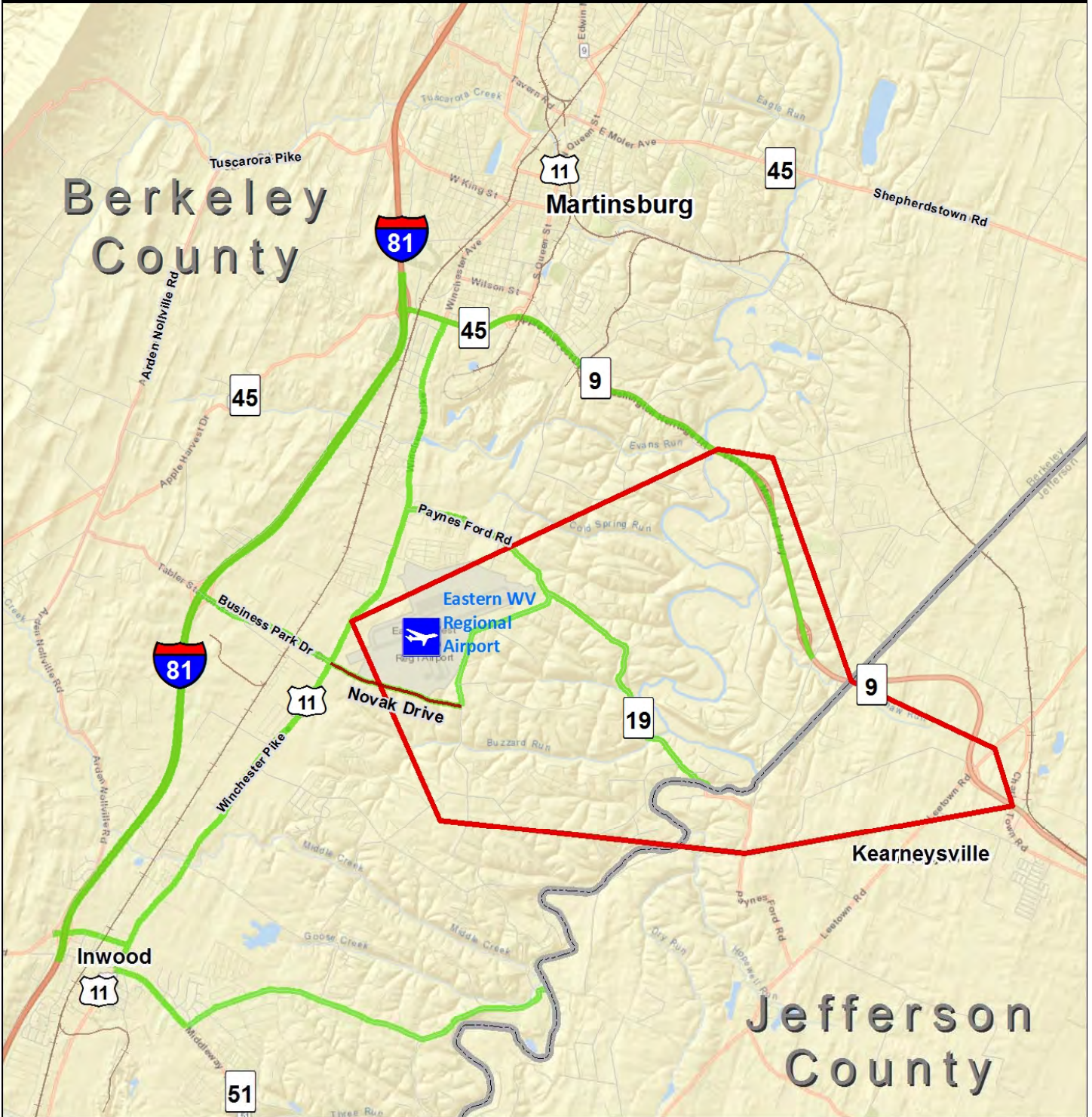
- Provide additional access to the Tabler Station area
- Promote growth in downtown Martinsburg through congestion relief on WV 45 and highway signage for downtown Martinsburg
- Promote freight growth by providing improved access to I-81

Environmental Goal: Protect and preserve the environment in the study area.

Objectives include:

- Minimize impacts to the Opequon Creek and other environmental and cultural resources
- Preserve the rural character of the area by appropriately controlling access
- Minimize noise impacts by avoiding sensitive locations
- Improve air quality by reducing traffic congestion

Environmental and Traffic Analysis Study Areas



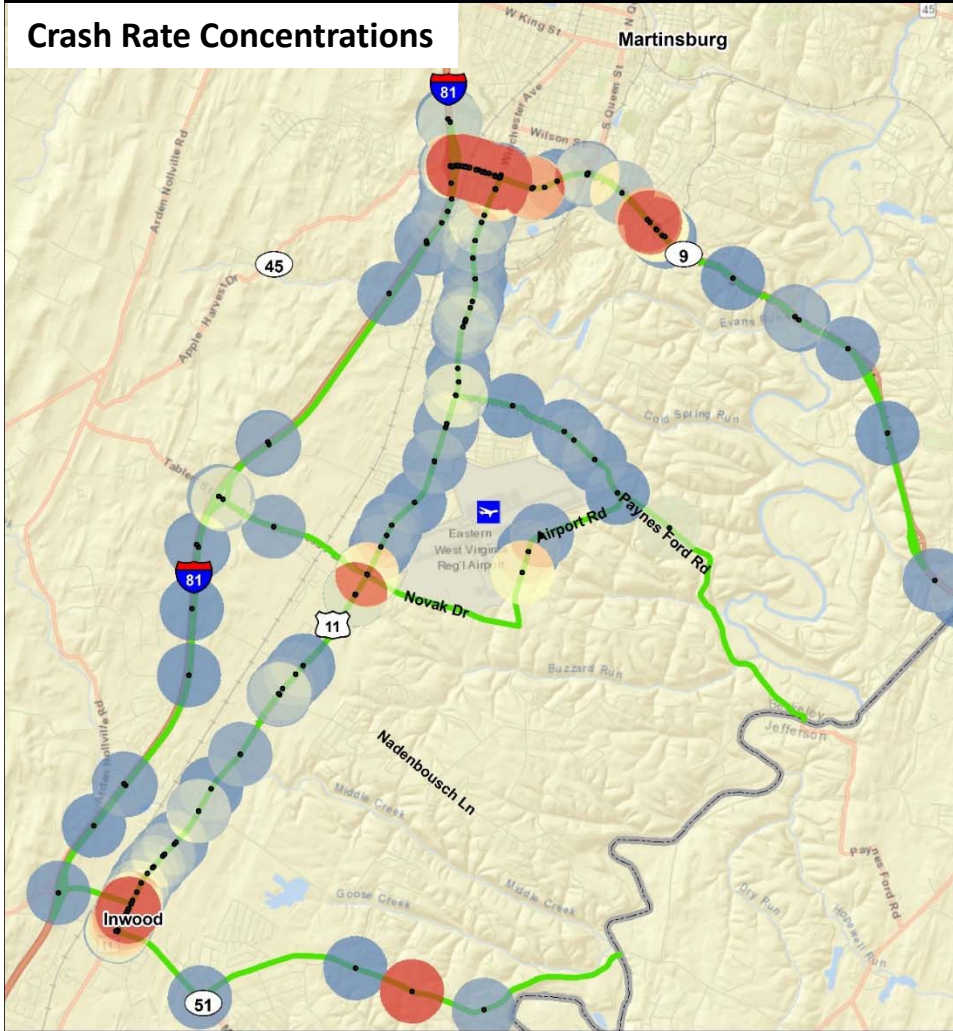
Legend

- Environmental Study Area
- Traffic Analysis Study Area
- Existing Novak Drive



Crash Analysis

Crash Rate Concentrations

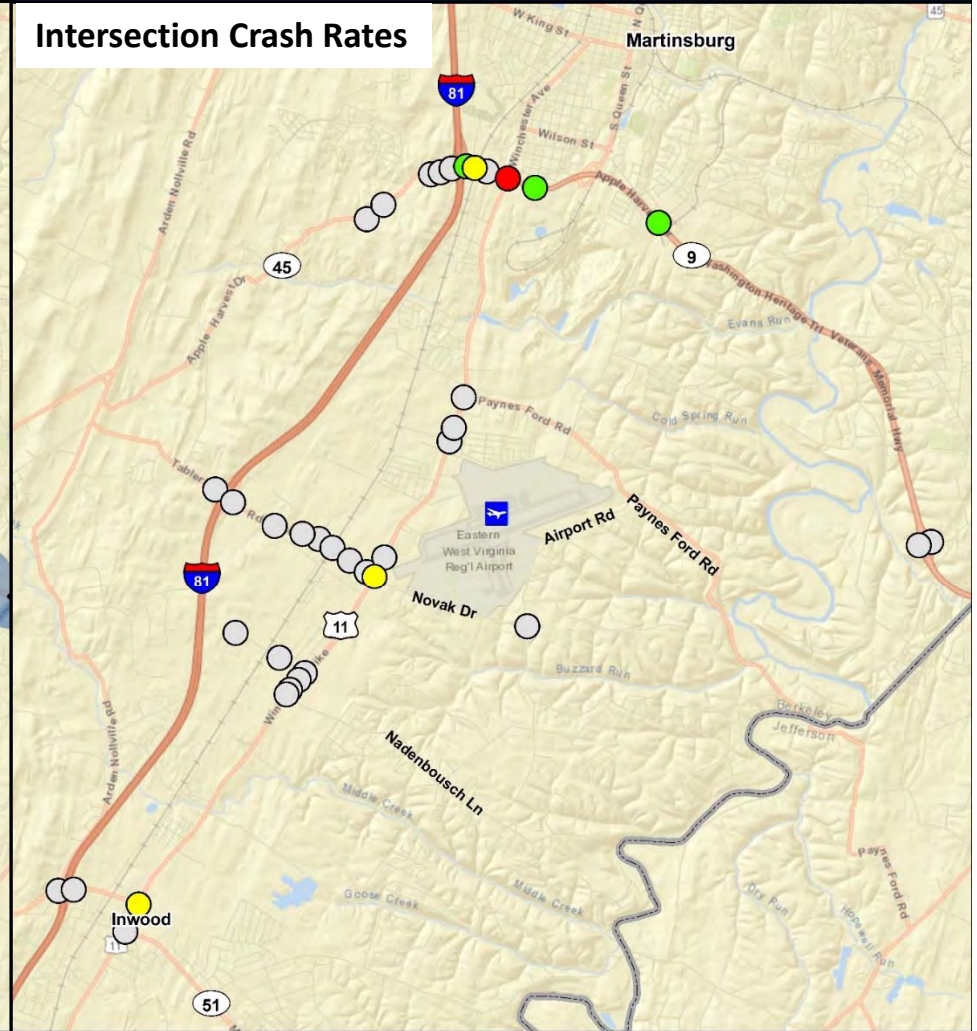


Legend

- Traffic Analysis Study Area
- Crashes
- Crash Density
High
Low



Intersection Crash Rates

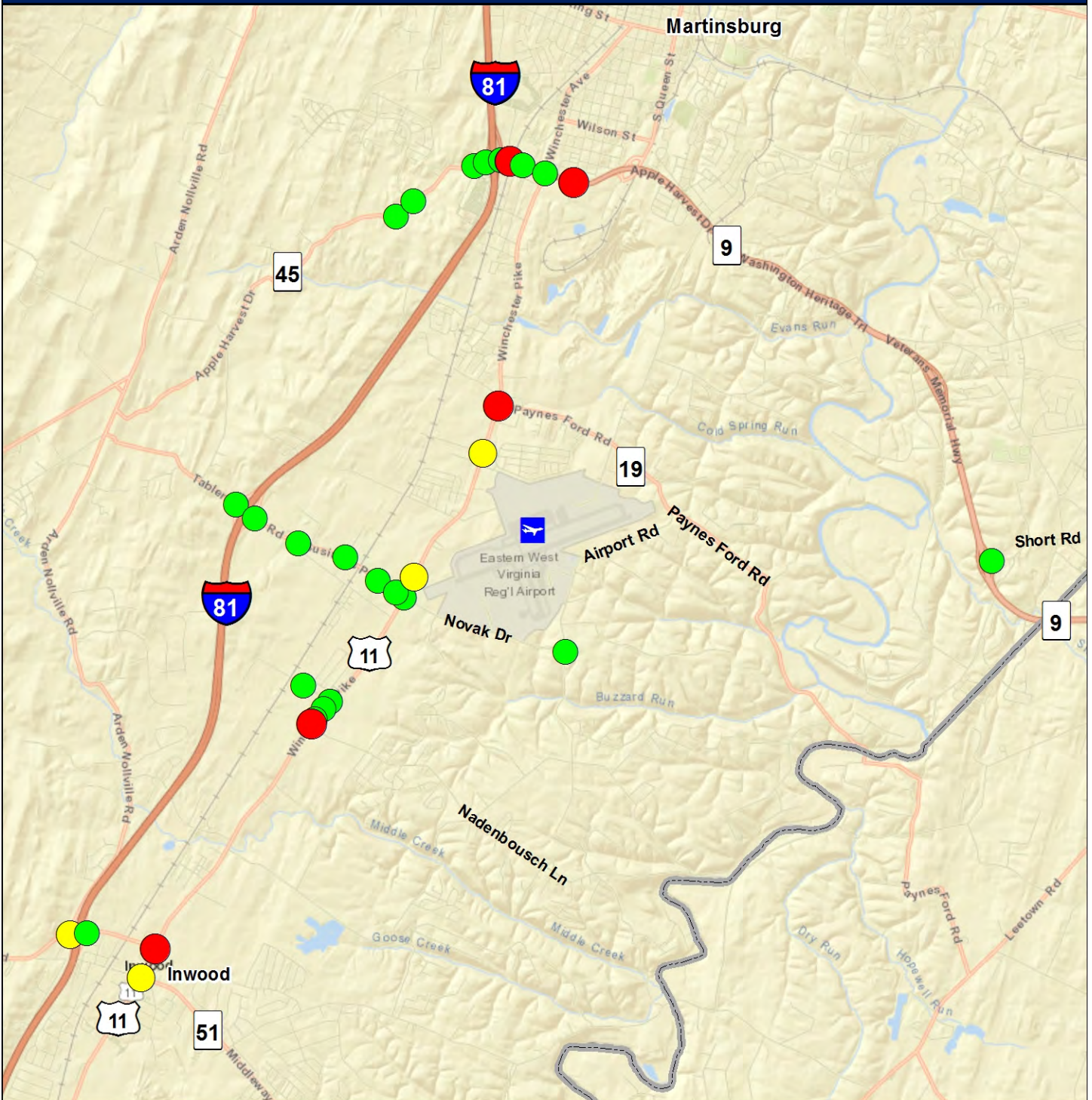


Legend

- < 0.4
- 0.4 - 0.59
- 0.6 - 0.79
- 0.8 - 1.0



Existing Traffic Analysis



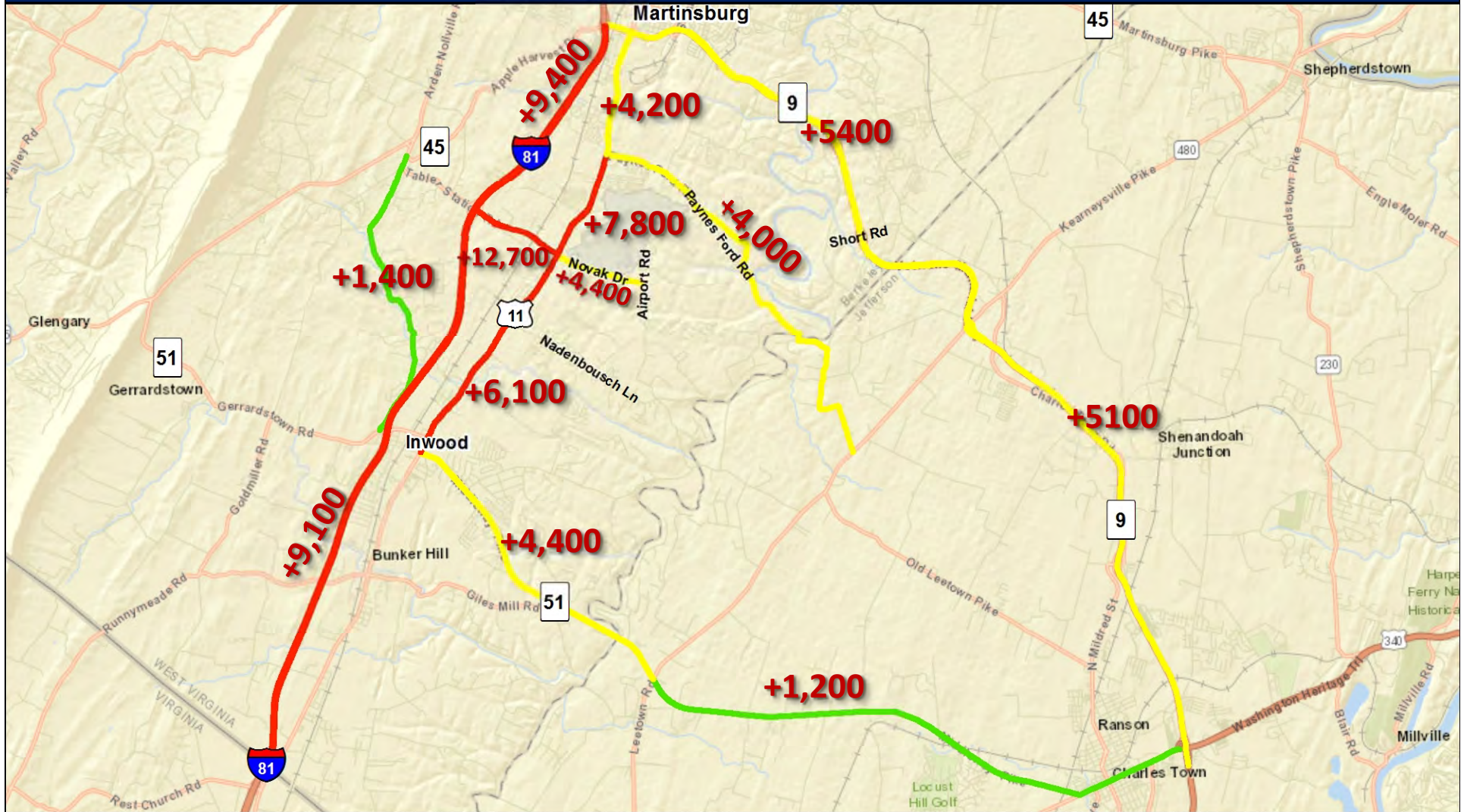
Legend

Existing Level of Service (PM)

- LOS A, B or C
- LOS D
- LOS E or F



Projected Daily Traffic Volume Growth (2017 to 2040)



Legend

Projected Traffic Volume Growth (2017 to 2040) — 0 - 1500 — 1501 - 6000 — 6001 - 13000

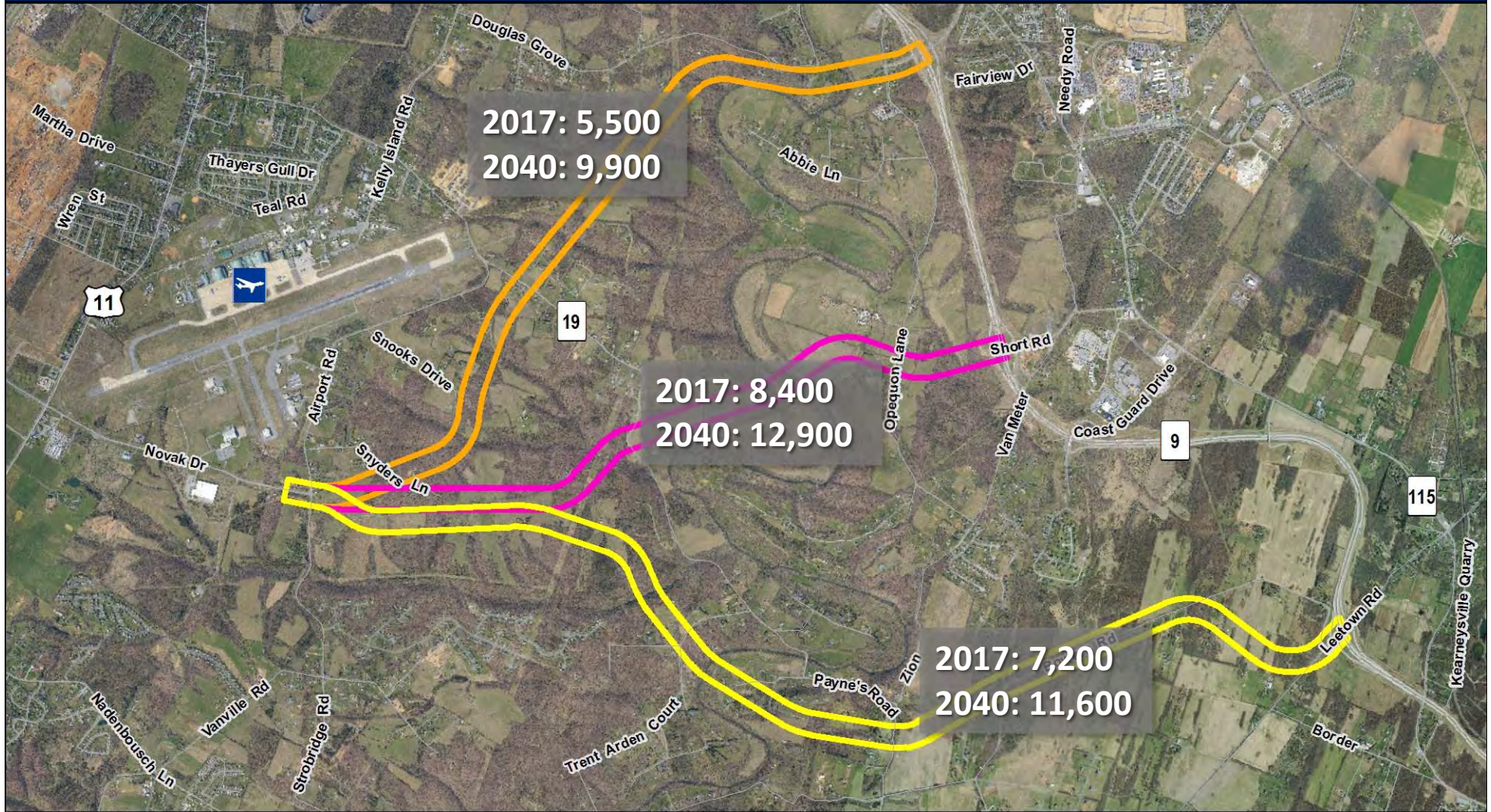


Novak Drive Connector Study



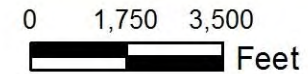
Public Workshop
June 27, 2017

Projected Daily Traffic Volumes From Travel Model

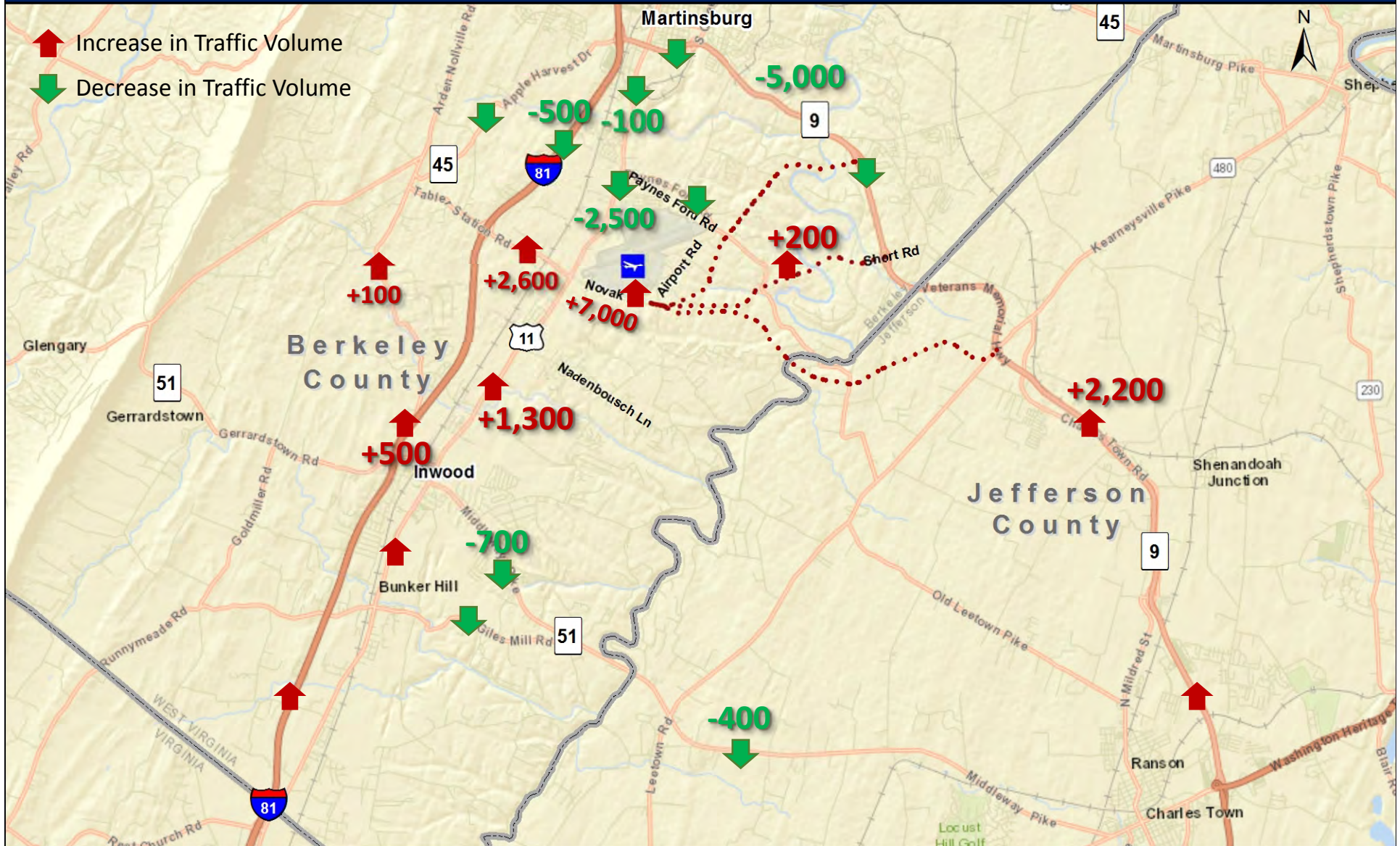


Legend

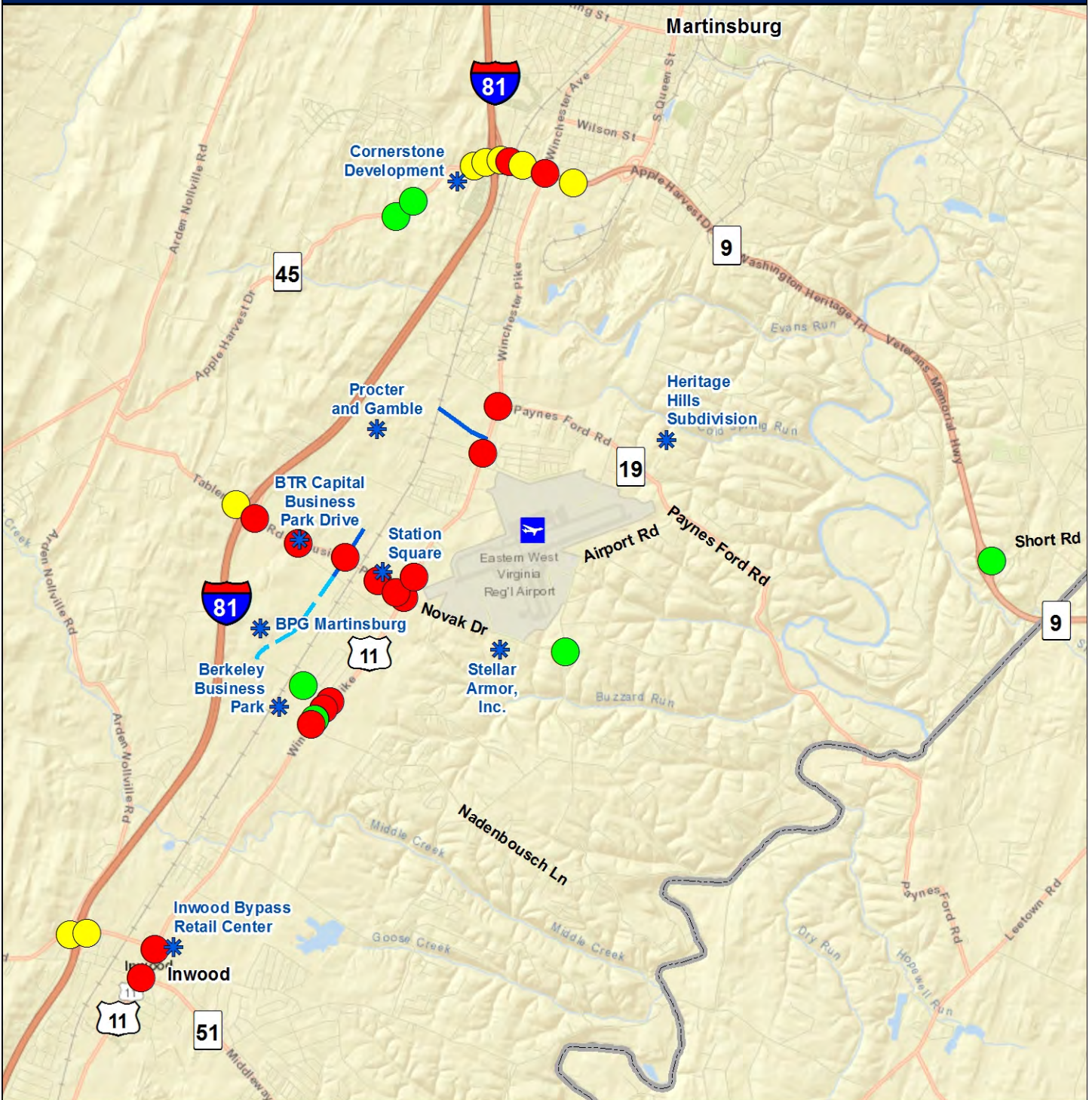
- Alternative 1
- Alternative 2
- Alternative 3



2040 Daily Diversions Due To Novak Drive Extension



Future (2040) No-Build Traffic Analysis



Legend

Future No-Build Level of Service (PM)

● LOS B or C

● LOS D

● LOS E or F



Planned/Proposed Development

— Proposed Improvement

- - - Improvement Under Construction

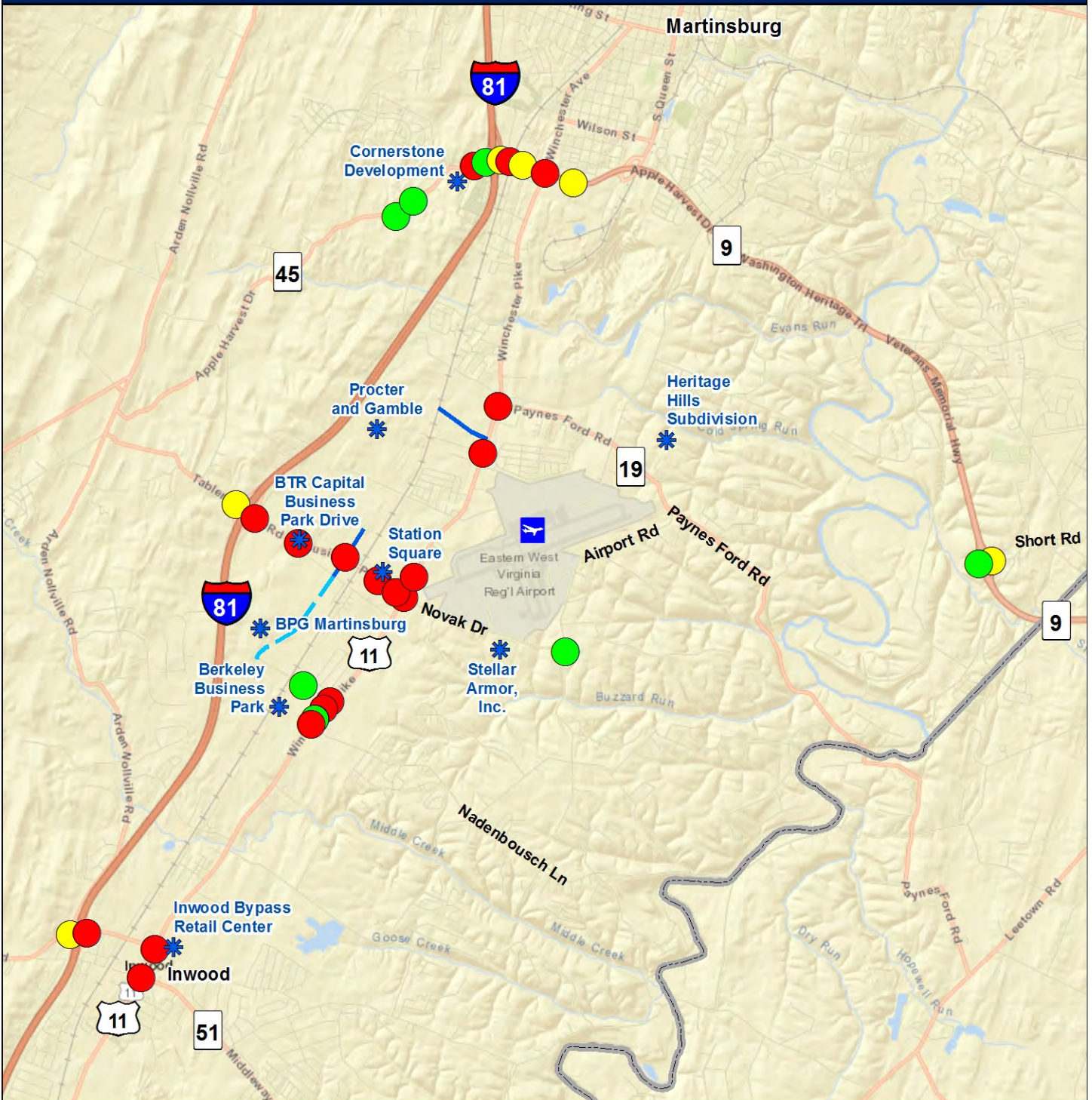


Novak Drive Connector Study



Public Workshop
June 27, 2017

Future (2040) Build Traffic Analysis



Legend

Future Build Level of Service (PM)

● LOS B or C



● LOS E or F



Planned/Proposed Development

— Proposed Improvement

- - - Improvement Under Construction

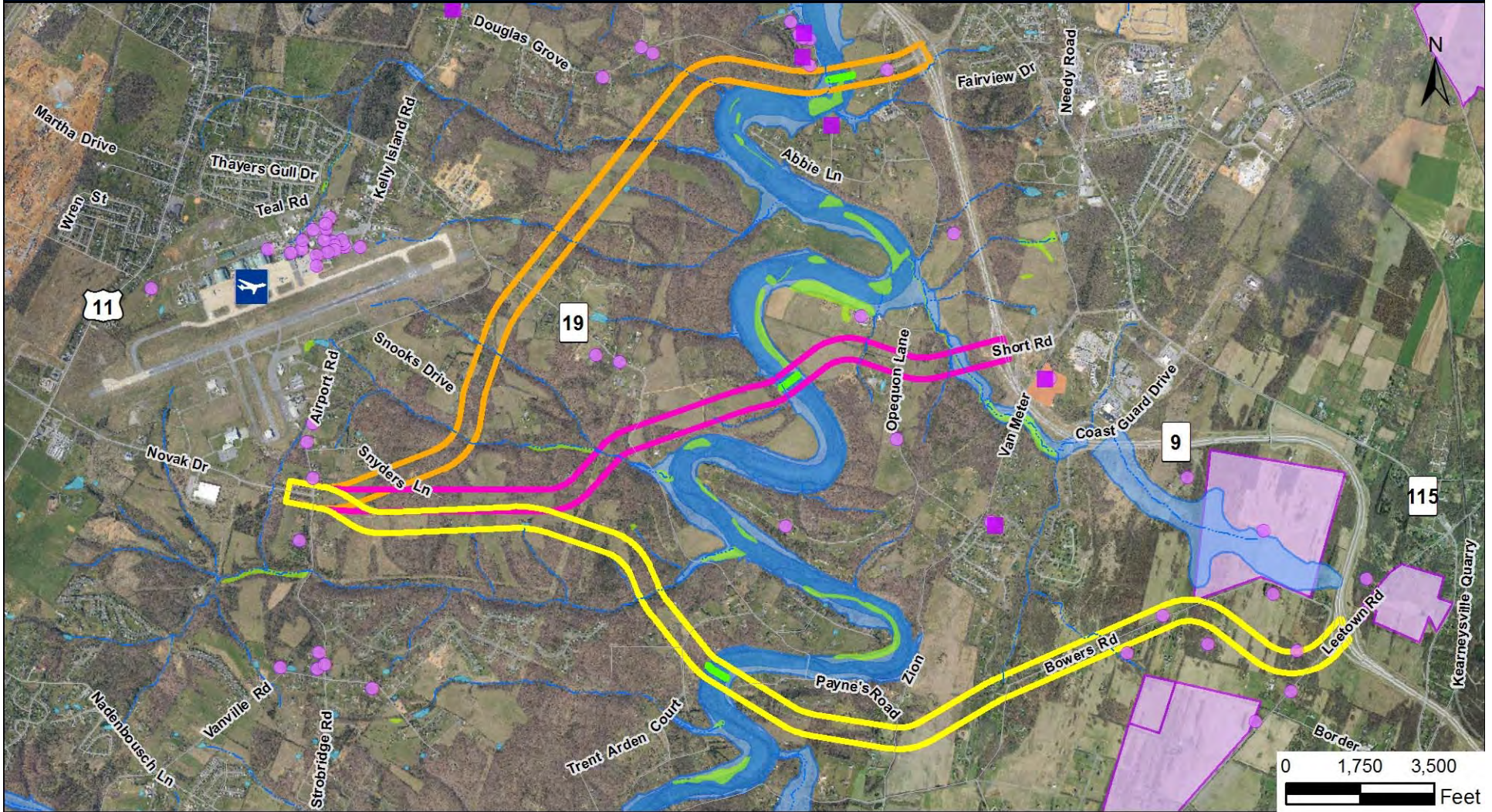


Novak Drive Connector Study



Public Workshop
June 27, 2017

Preliminary Alternative Corridors



Legend							
	Alternative 1		Alternative 3		National Register Site		Historic_District
	Alternative 2		Bridge		Recorded Historic Site		Protected Farmlands
					Floodway		100-year Floodplain
					NW Wetland		Freshwater Pond
					Stream		

