

# GEOSPATIAL TRANSPORTATION INFORMATION SECTION: *WHERE WE ARE?*



Geospatial Transportation Information Section  
Program Planning & Administration Division  
Division of Highways  
West Virginia Department of Transportation  
Bldg. 5, Rm. A-816  
1900 Kanawha Blvd., E  
Charleston, WV 25305

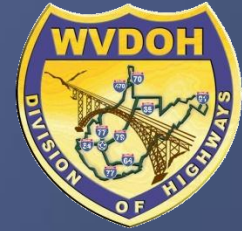
# History

Historically the West Virginia Department of Transportation (WVDOT) has been utilizing geospatial (GIS, Remote Sensing, & GPS) technology for planning, analysis, and mapping purposes ever since the technology became available.

In 2005 the WVDOT GIS Section was created to meet the growing needs for geospatial data and services in transportation.

In 2007 the GIS Section was reorganized as the GIS Unit and merged with the Highway Data Services (HDS) Unit, a program responsible for processing roadway additions, changes, or abandonment requests from the Districts, and the update and maintenance of the Roadway Inventory Log. The two units together formed the current Geospatial Transportation Information (GTI) Section.

# Program Planning & Administration Division (CP)



## Geospatial Transportation Information Section (GTI)

GIS Unit

Highway Data  
Services (HDS) Unit

- Transportation GIS Data
- Geospatial Services
- Geospatial Applications

- Roadway Inventory Log
- Roadway Statistics
- Public Certified Mileage
- Highway Performance Monitoring System


# GTI'S OFFERING

- ▣ Public
  - GTI Portal
  - GTIHelpDesk@wv.gov
- ▣ WVDOT
  - GTI Portal
  - Continuously Operating Reference Stations (CORS)
  - Fleet Management
  - GIS Portal
  - Videolog Viewer
  - Straight Line Diagram Viewer
  - WVDOH District GIS Coordinator Network
  - GIS/GPS Training
  - Other Services (Transportation GIS User Group, etc.)

# GTI PORTAL

<http://www.transportation.wv.gov/highways/programplanning/gti/Pages/default.aspx>

west virginia State Agency Directory | Online Services

 **West Virginia Department of Transportation** [About Us](#) | [Agencies](#) | [News](#) | [FAQs](#) | [Careers](#)

[Vision](#)  
[GIS](#)  
[Highway Data Services](#)  
[Disclaimers](#)  
[Contact](#)

[Transportation](#) > [Highways](#) > [Program Planning](#) > **GTI**

Geospatial Transportation Information

Welcome to the West Virginia Department of Transportation's Geospatial Transportation Information (GTI) main page.

Historically the West Virginia Department of Transportation (WVDOT) has been utilizing geospatial (GIS, Remote Sensing, & GPS) technology for planning, analysis, and mapping purposes ever since the technology became available.

In 2005 the WVDOT GIS Section was created to meet the growing needs for geospatial data and services in transportation. In 2007 the GIS Section was reorganized as the [GIS Unit](#) and merged with the [Highway Data Services \(HDS\) Unit](#), a program responsible for processing roadway additions, changes or abandonment requests from the Districts, and the update and maintenance of the Roadway Inventory File. The two units together formed the Geospatial Transportation Information (GTI) Section.

Now the GTI Section is composed of 22 full time professionals and located within the Division of Highways (WVDOH) Program Planning and Administration Division

**Geospatial Transportation Information Section (GTI)**

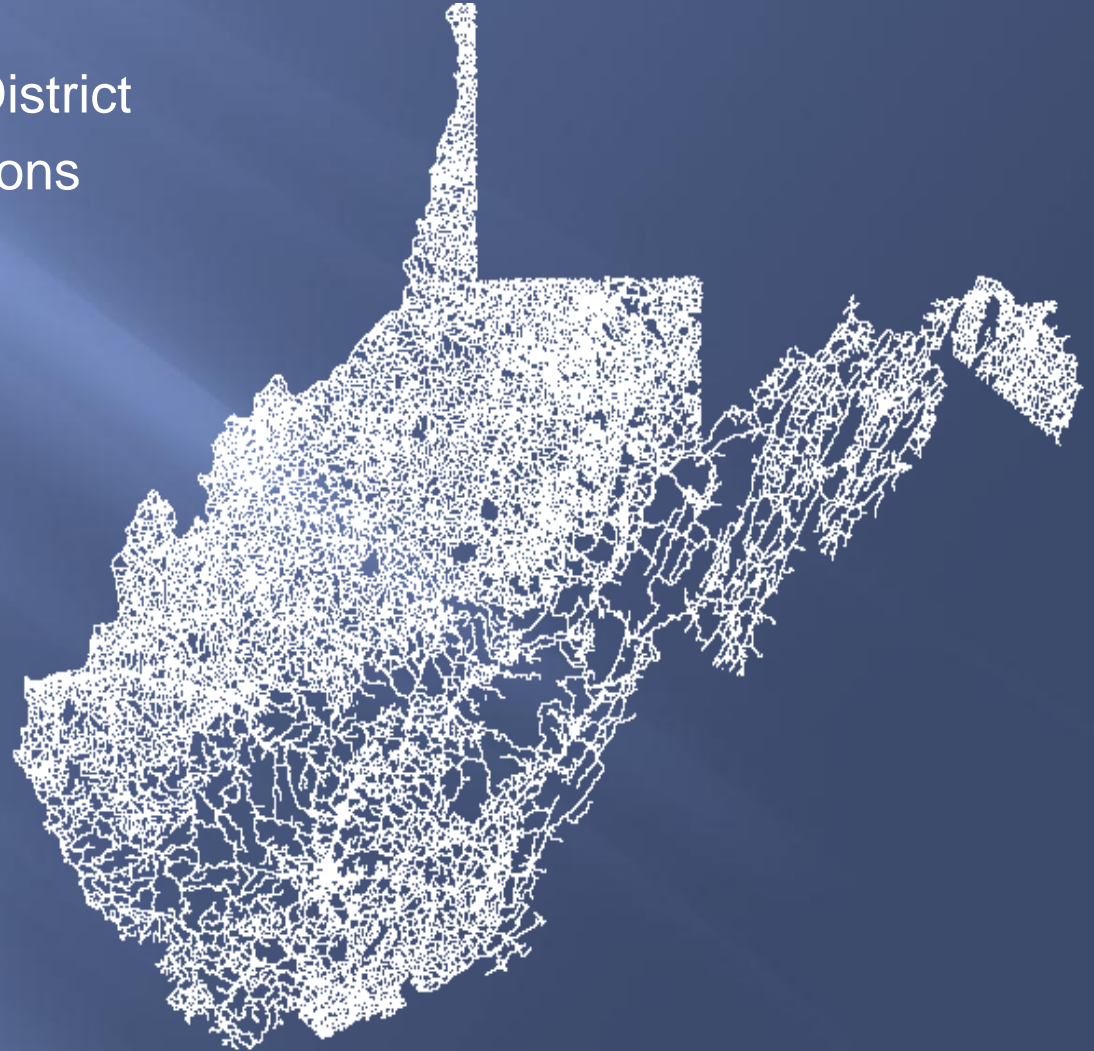
- GIS Unit**
  - Transportation GIS Data
  - Map Production
  - Geospatial Services
  - Geospatial Applications
- Highway Data Services Unit**
  - Roadway Inventory Log
  - Roadway Statistics
  - Public Certified Mileage
  - Highway Performance Monitoring System

Please use the links on the left to further explore our site.

Last Updated: 8/8/2011

# DATA CATALOG

- ❖ Road by Sign/County/District
- ❖ WVDOT Fueling Locations
- ❖ WVDOT Facilities
- ❖ Airports
- ❖ Ports
- ❖ Rest Areas
- ❖ Park & Rides
- ❖ Etc.



# GIS SERVICES

- ❑ ESRI ArcGIS Server
- ❑ REST & SOAP APIs
- ❑ UTM & Web Mercator
- ❑ Future GeoData Services
- ❑ Future Image Services
- ❑ Future Data Exchange Network

ArcGIS Services Directory

[Home](#)

**Folder: /**

**Current Version:** 10.0

**Folders:**

- [Transport](#)
- [UTM](#)
- [WM](#)
- [WVNG COP](#)

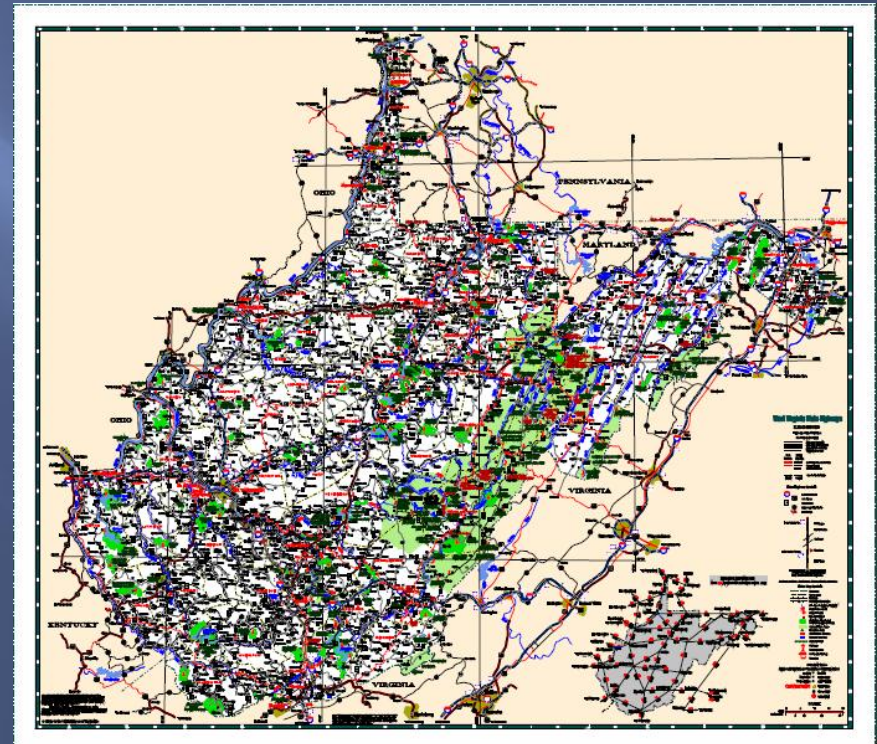
**Services:**

- [ARRA\\_Base](#) (MapServer)
- [County\\_Posture](#) (MapServer)
- [CRTS\\_Base](#) (MapServer)
- [FEDSTIP09](#) (MapServer)
- [ParkNRide](#) (MapServer)
- [Riverports](#) (MapServer)
- [SRIC](#) (MapServer)
- [WVAirports](#) (MapServer)
- [WVDOTFuelLocations](#) (MapServer)
- [WVNG\\_FD\\_Military\\_Assets](#) (MapServer)

**Supported Interfaces:** [REST](#) [SOAP](#) [Sitemap](#) [Geo Sitemap](#)

# MAPS

- ▣ State General Highway Maps
- ▣ State Functional Classification Map
- ▣ General Highway County Maps (55)
- ▣ State Highway Base Map
- ▣ City Maps (205)
- ▣ Urban Area Maps (26)

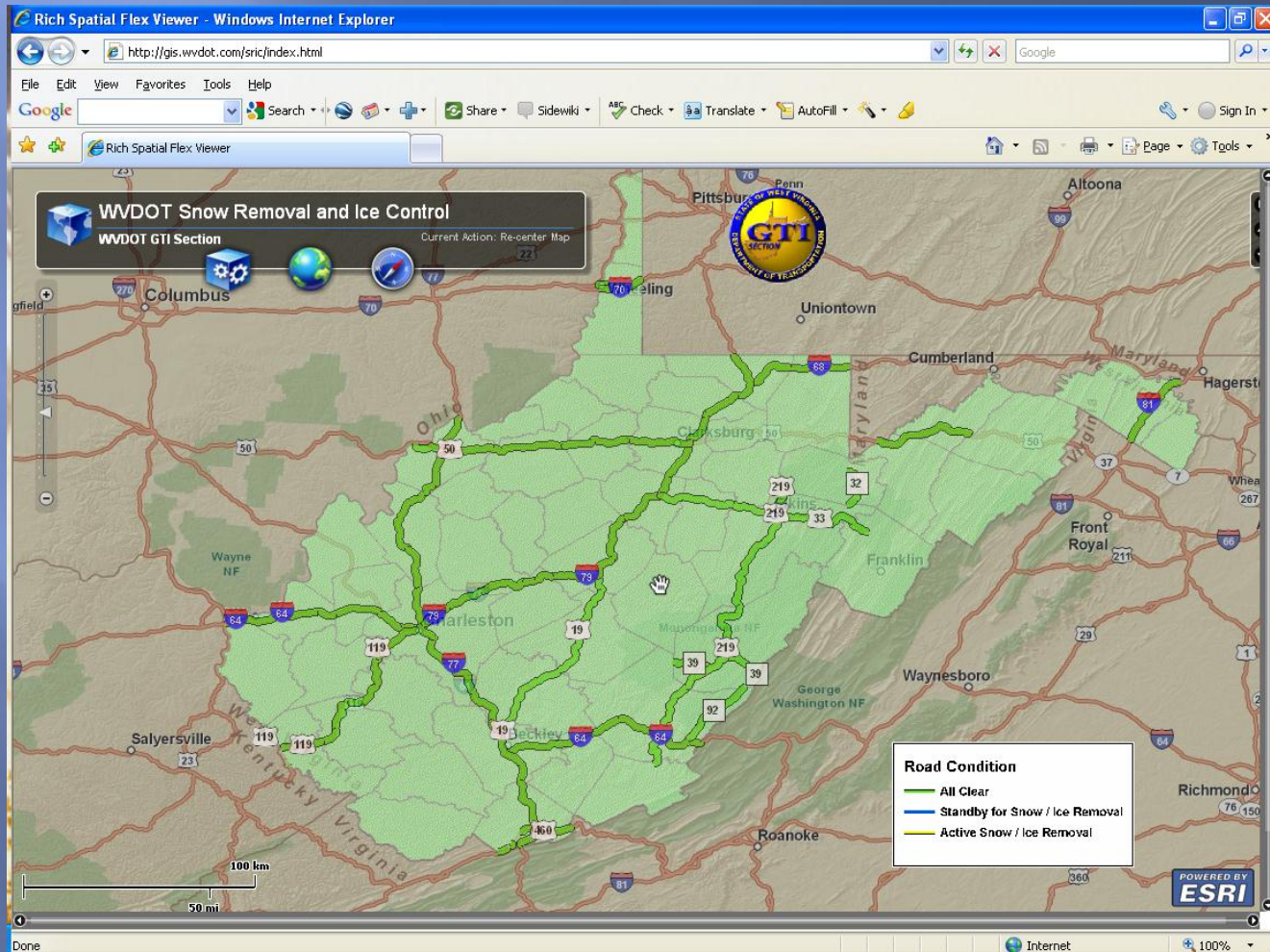




# WEB MAPPING APPLICATIONS

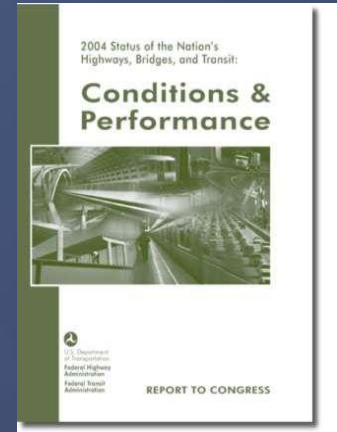
- ▣ WVDOT Facility Locations
- ▣ WVDOT Statewide Transportation Improvement Program
- ▣ WVDOT River Port Locations
- ▣ WVDOT Airport Locations
- ▣ WVDOT Snow Removal & Ice Control (SRIC)
- ▣ WV American Recovery and Reinvestment (ARRA) Reporting
- ▣ WVDOT Coal Resource Transportation System (CRTS)

# WVDOT SNOW REMOVAL AND ICE CONTROL

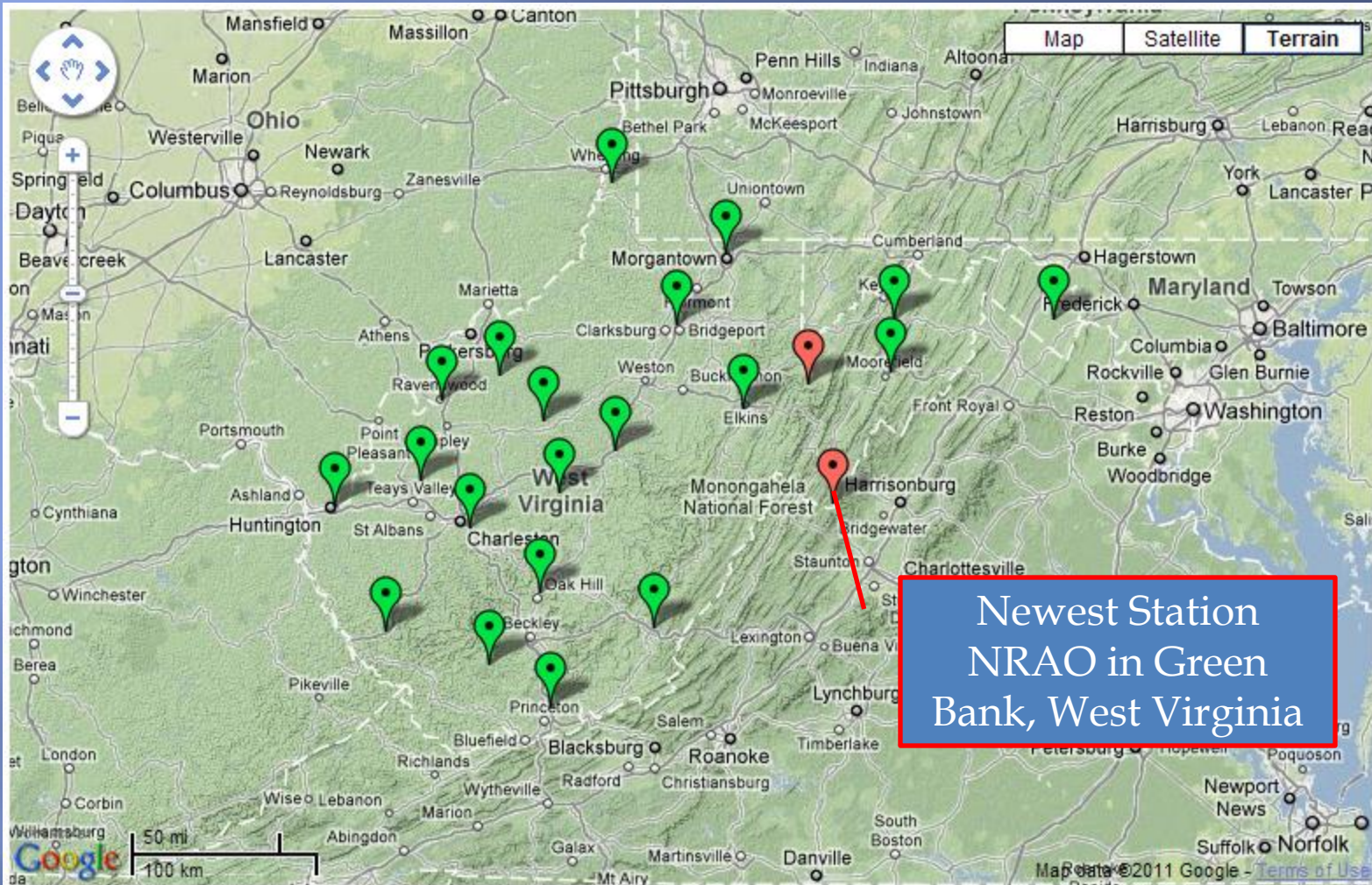


# HDS UNIT WEB RESOURCES

- Procedures & Guidelines
  - Additions & Changes
  - Roadway Abandonment
- Data Resources
  - Annual Roadway Inventory Statistics 2008-2010
  - West Virginia Federal Aid Roads 2008-2010
- District Status Reports
  - Pending District Addition/Change Request Status Report
  - Pending District Abandonment Request Status Report
  - Current Reserved Route Listing
- Annual Highway Performance Monitoring System (HPMS) Data Profile



# WV DOT CORRS & VRS



**2011**  
**22 WV STATIONS**  
**INSTALLED**

**35 STATIONS TRANSMITTING TO NETWORK**  
**169 Subscriptions**  
**109 Organizations**  
**187 Users**

# WVCORS NETWORK

## Cooperative Effort

Site Owners

Include

USCOE

NRAO

WVDNR

WVDEP

WVRJA

WVU, MU, FSU,

SCTC, EWVTC,

Marshall, Braxton,

and Wirt County

Schools

## Partnerships - Surrounding State

Ohio

Kentucky

Pennsylvania

Virginia



# INFRASTRUCTURE ENABLED APPLICATIONS

- Precision Agriculture
- Bridge and Dam Deformation monitoring
- Scientific/engineering research
- Surveying
- Mine rescue
- Construction
- Machine control
- Marine navigation and positioning
- Mapping and GIS



# WV DOT FLEET MANAGEMENT



# WV DOT GeoManager GPS Fleet Management

## Benefits

- Fleet Productivity
- Fuel Reduction
- Driver Safety
- Environmental Impact
- Asset Utilization
- Diagnostics & Messaging
- NMEA GPS Data Feed
- NMEA WiFi Data Feed



**Current Web Site**  
**<http://telvistar.com>**

# NEW LOOK

## Features

- Real-time location
- Map View - View the real-time status and locations
- Exception alerting - Includes speeding, idle time, battery
- Configurable Dashboards
- Vehicle Diagnostics - Fuel, carbon, odometer and fault codes
- Landmarks (GeoFence) - 20 unique types
- Vehicle Maintenance Schedule Notifications
- PTO and Temperature Sensor Connection
- Data integration to existing systems

•On-line self paced user training



# GIS PORTAL, VIDEOLOG VIEWER, & STRAIGHT LINE DIAGRAM VIEWER



**Route Selection**

Select Route:  Route Type  County

Route Type: **WVRoutes**

County: **Kanawha**

Route: **WV 114**

Supp Code: **00**

Sub-route: **00**

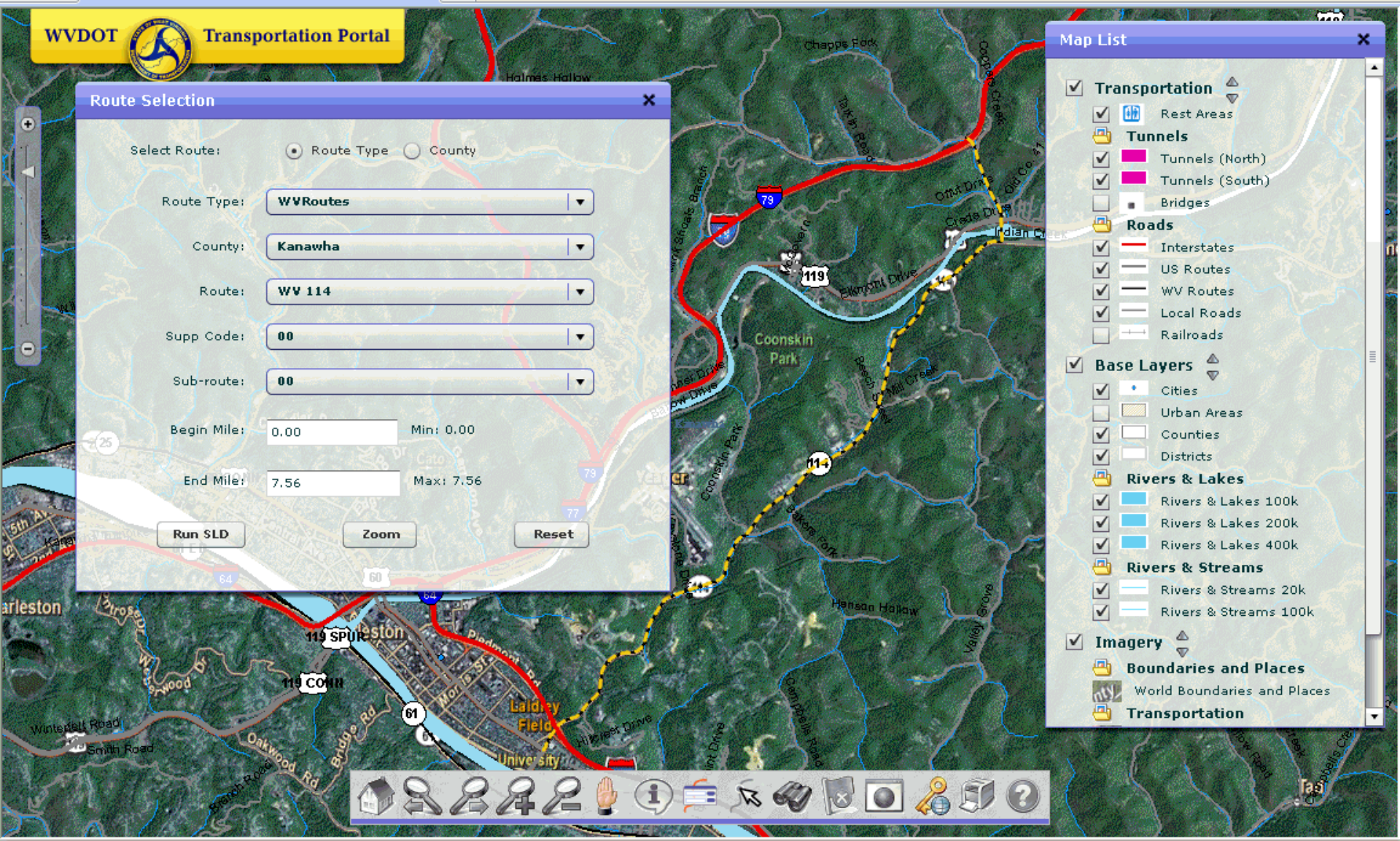
Begin Mile:  Min: 0.00

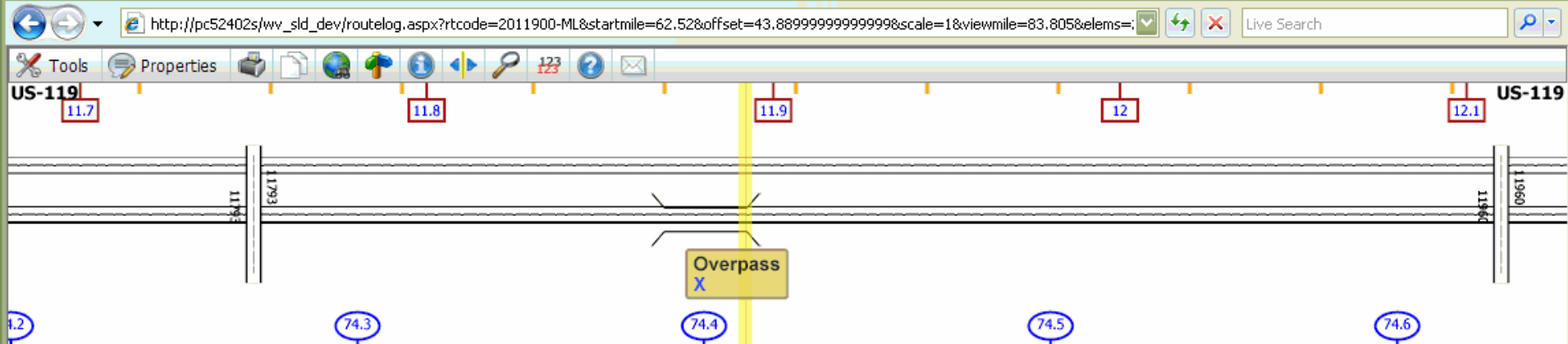
End Mile:  Max: 7.56

**Run SLD** **Zoom** **Reset**

**Map List**

- Transportation**
  - Rest Areas
  - Tunnels**
    - Tunnels (North)
    - Tunnels (South)
  - Bridges
- Roads**
  - Interstates
  - US Routes
  - WV Routes
  - Local Roads
  - Railroads
- Base Layers**
  - Cities
  - Urban Areas
  - Counties
  - Districts
- Rivers & Lakes**
  - Rivers & Lakes 100k
  - Rivers & Lakes 200k
  - Rivers & Lakes 400k
- Rivers & Streams**
  - Rivers & Streams 20k
  - Rivers & Streams 100k
- Imagery**
  - Boundaries and Places**
    - World Boundaries and Places
  - Transportation**





ETE: 74.199 mi    Route: US-119    Scale: 1:200    Guide Location: ETE: 74.412 mi CNT: 11.892 mi (US-119)    ETE: 74.649 mi  
 CNT: 11.679 mi  
 STATION: 61666    STATION: 64041

Pavement Width	
	24
Surface Type	
Number of Lanes	
	4
Grade Width	
	36
Speed Limit	
	65
WV Legal Functional Class	
	1
NHFS Functional Class	
	14
AADT (2008)	
AADT (2007)	
	37000
AADT (2006)	

Overpass Element	
RTIntid	10901
interid	647
rtinvid	63395
RouteID	20100640000WB
MPstart	5.183000000000000e+001
Longitude	-8.174451032259999e+001
Latitude	3.836862277700000e+001
Grade	O
Direction	WB
Comments	X
SSMA_TimeStamp	AAAAAAGSHA=
cmpStart	5.183000000000000e+001

# West Virginia Department of Transportation - Video Log Viewer

Layouts Help

## Video Log



Skip Images



Display Rate

## Video Metadata

Route Select

Route ID:	WV-010-00-00NA
Route Name:	WV 10
County Name:	Cabell
Direction:	North
Survey Year:	2008
Mile Point:	15.601

## Display Map



## Attribute Metadata

Pavement data

RouteID	06300100000
MPStart	15.6
MPEnd	15.69
IRI	60
Surtyp_ID	5

# CURRENT & FUTURE MAJOR PROJECTS

- ▣ ERP/Asset Management
- ▣ CORS
- ▣ HPMS Portal
- ▣ Fleet Management
- ▣ WV National Guard (WVNG) Flood Emergency Management
- ▣ Enterprise GIS Framework Enhancement
  - Transportation GIS Data Model
  - Statewide Road Centerline Dataset
- ▣ GIS Portal & Straight Line Diagram Viewer
- ▣ Video Log Viewer
- ▣ Highway Map Production
- ▣ Web Mapping Applications



- ▣ Transportation GIS Data Collection

# QUESTIONS?





# CONTACTS

Hussein Elkhansa	Section Head	<a href="mailto:Hussein.S.Elkhansa@wv.gov">Hussein.S.Elkhansa@wv.gov</a>	(304) 558-9657
Janet Lemon	HDS Unit Leader	<a href="mailto:Janet.L.Lemon@wv.gov">Janet.L.Lemon@wv.gov</a>	(304) 558-9599
Yueming Wu	GIS Unit Leader	<a href="mailto:Yueming.Wu@wv.gov">Yueming.Wu@wv.gov</a>	(304) 558-7437
Marshall Burgess	Database Administrator	<a href="mailto:Marshall.L.Burgess@wv.gov">Marshall.L.Burgess@wv.gov</a>	(304) 558-9528
Larry Douglas	Project Manager	<a href="mailto:Lawrence.A.Douglas@wv.gov">Lawrence.A.Douglas@wv.gov</a>	(304) 558-7402
Kyle Weatherholt	District GIS Coordinator	<a href="mailto:Kyle.S.Weatherholt@wv.gov">Kyle.S.Weatherholt@wv.gov</a>	(304) 558-7434 or 528-5936
Michelle Frame	GIS Training Liaison	<a href="mailto:Michelle.L.Frame@wv.gov">Michelle.L.Frame@wv.gov</a>	(304) 558-9588

*For those of you still awake,  
thanks for listening and have a  
great day.*



*Quote for the Day.....*

*“Thanks to the Interstate Highway System, it is now possible to travel across the country from coast to coast without seeing anything.” - Charles Kuralt*