

# LEWISBURG CORRIDOR STUDY



*Presented by: Gary Graley P.E*

# HISTORY OF THE PROJECT

- ❑ The project was initiated in Sept. 1992 with an evaluation of the need for improving US 219.
- ❑ A *Preliminary Discussion of Purpose and Need* report, as part of the NEPA process, was generated along with preliminary highway improvement designs.
- ❑ In 1995, a final *Purpose and Need Study* was prepared that expanded on earlier findings.
- ❑ The working draft of the EIS in 1996 for US 219 Upgrade from US 460 to Greenbrier Valley Airport in which alternatives were defined for consideration.

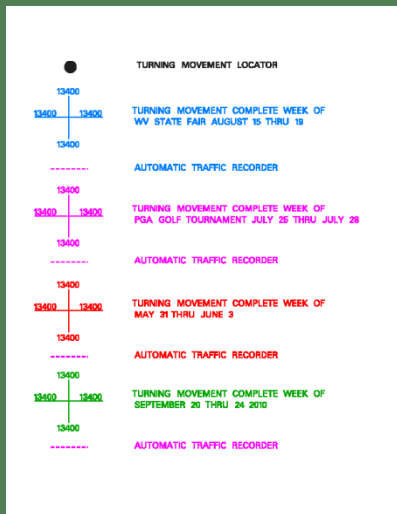
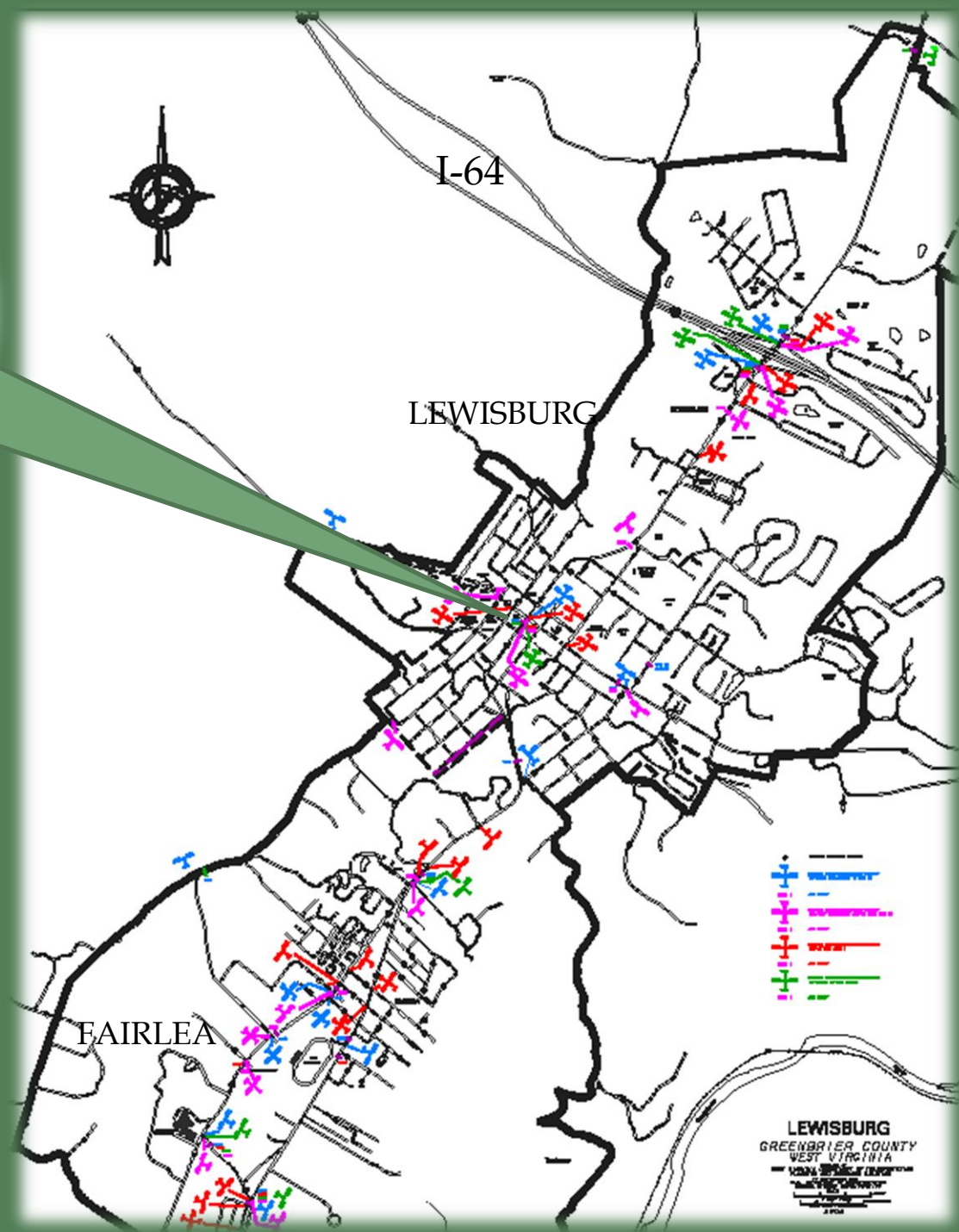
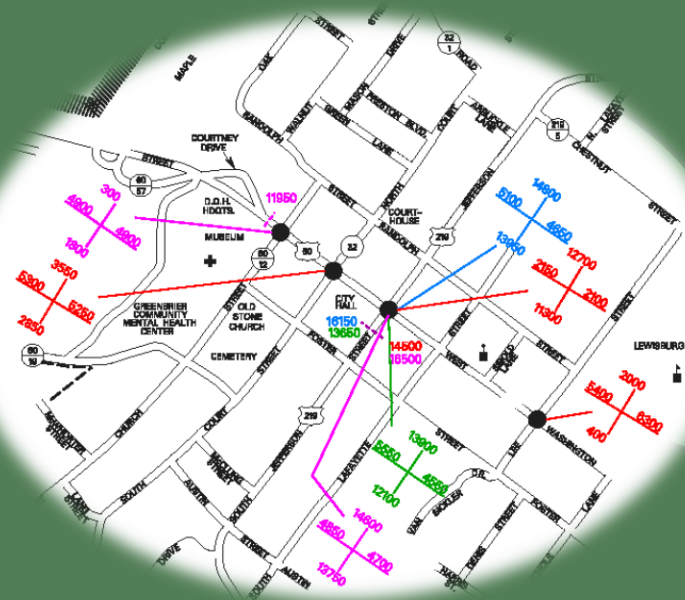
# HISTORY OF THE PROJECT

- ❑ Public Informational Meeting in 1998 for the US 219 Upgrade from US 460 to Greenbrier Valley Airport.
- ❑ Richlands I-64/US 60 Interchange Study for Greenbrier County done in April 2004.
- ❑ In May 2004, a private firm developed a comprehensive plan for the city of Lewisburg.
- ❑ In June 2007, City of Lewisburg Transportation Management Study.

# WHAT WE HAVE DONE

- ▣ Began design study within PP&A to identify possible alignments
- ▣ Turning Movements were completed during the 2011 WV State Fair & PGA Tour, along with counts in fall 2010 and spring 2011 to determine baseline.
- ▣ Non-Intrusive origin/destination studies via video camera. Completed by The Traffic Group in June 2011.
- ▣ Photo Science provided aerial contour mapping and LiDAR mapping at a 1" = 50' scale. Contour and base mapping was created for the DOH.
- ▣ Met with local DOH officials to discuss project concerns such as CA along the proposed corridor and traffic problems during special events.

# TURNING MOVEMENTS



LEWISBURG  
GREENBRIER COUNTY  
WEST VIRGINIA

# MOUNTED CAMERAS

# VEHICLE PLATE READER

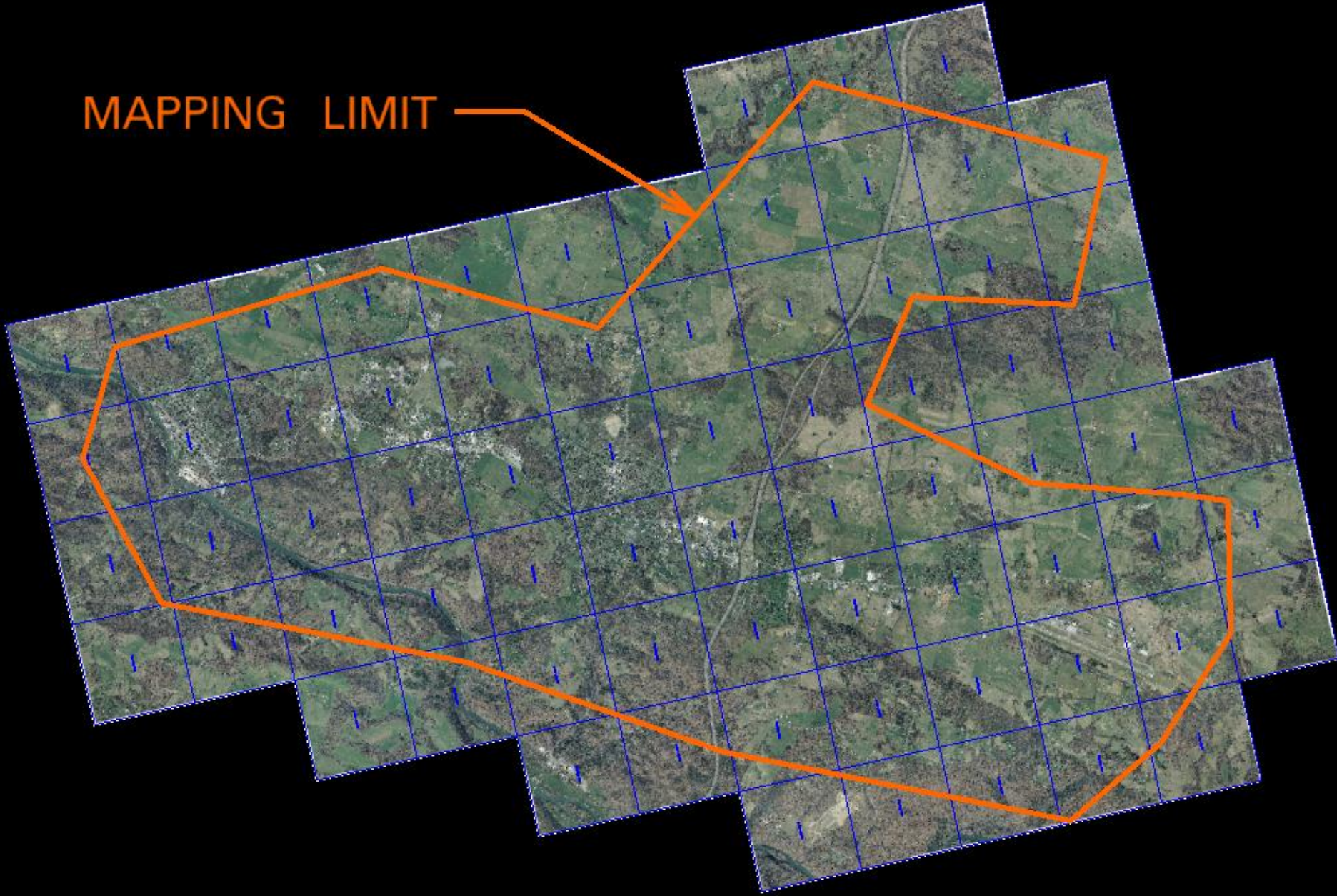
DAY

DAY

NIGHT

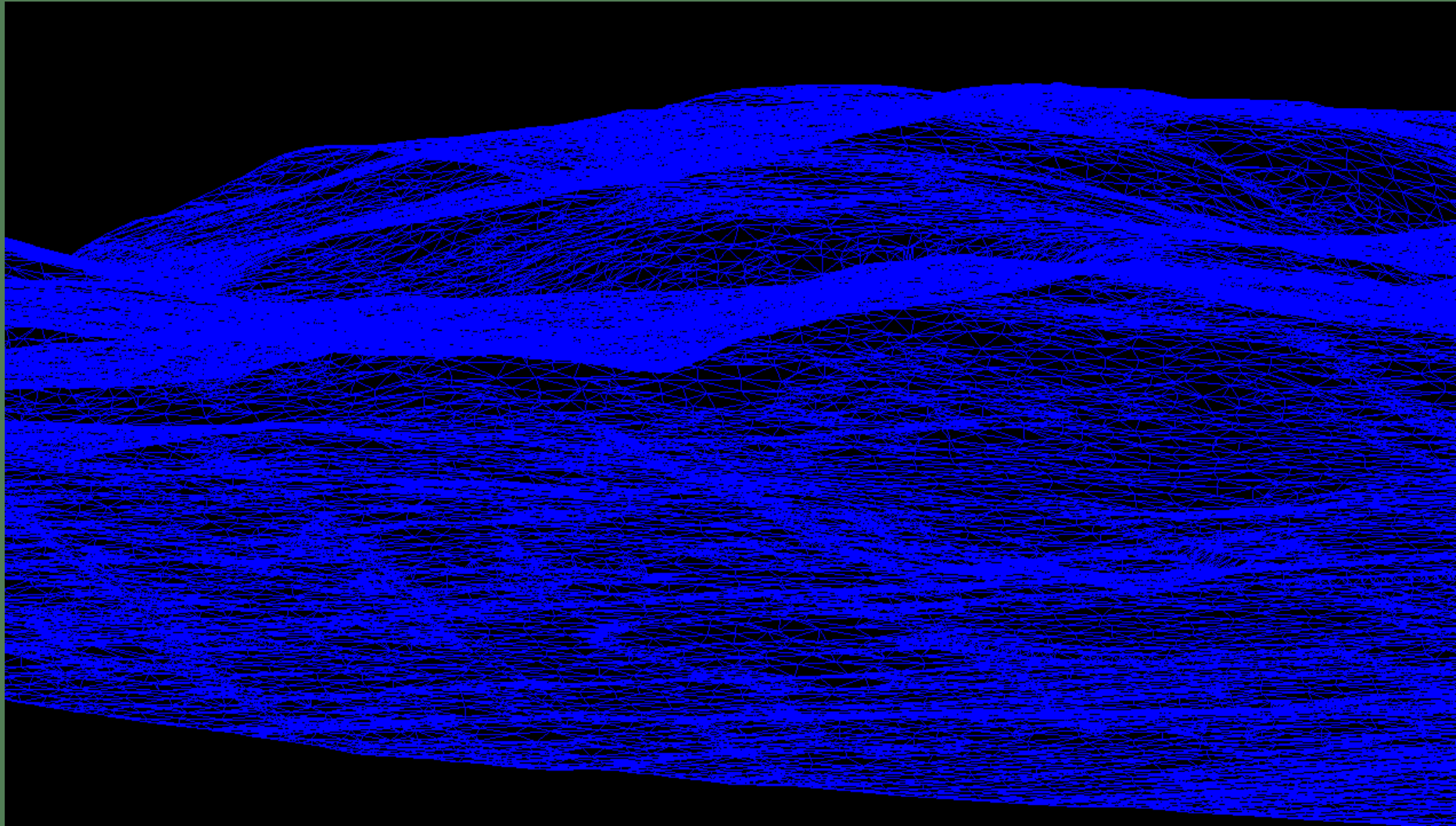
# MAPPING BY PHOTO SCIENCE

MAPPING LIMIT

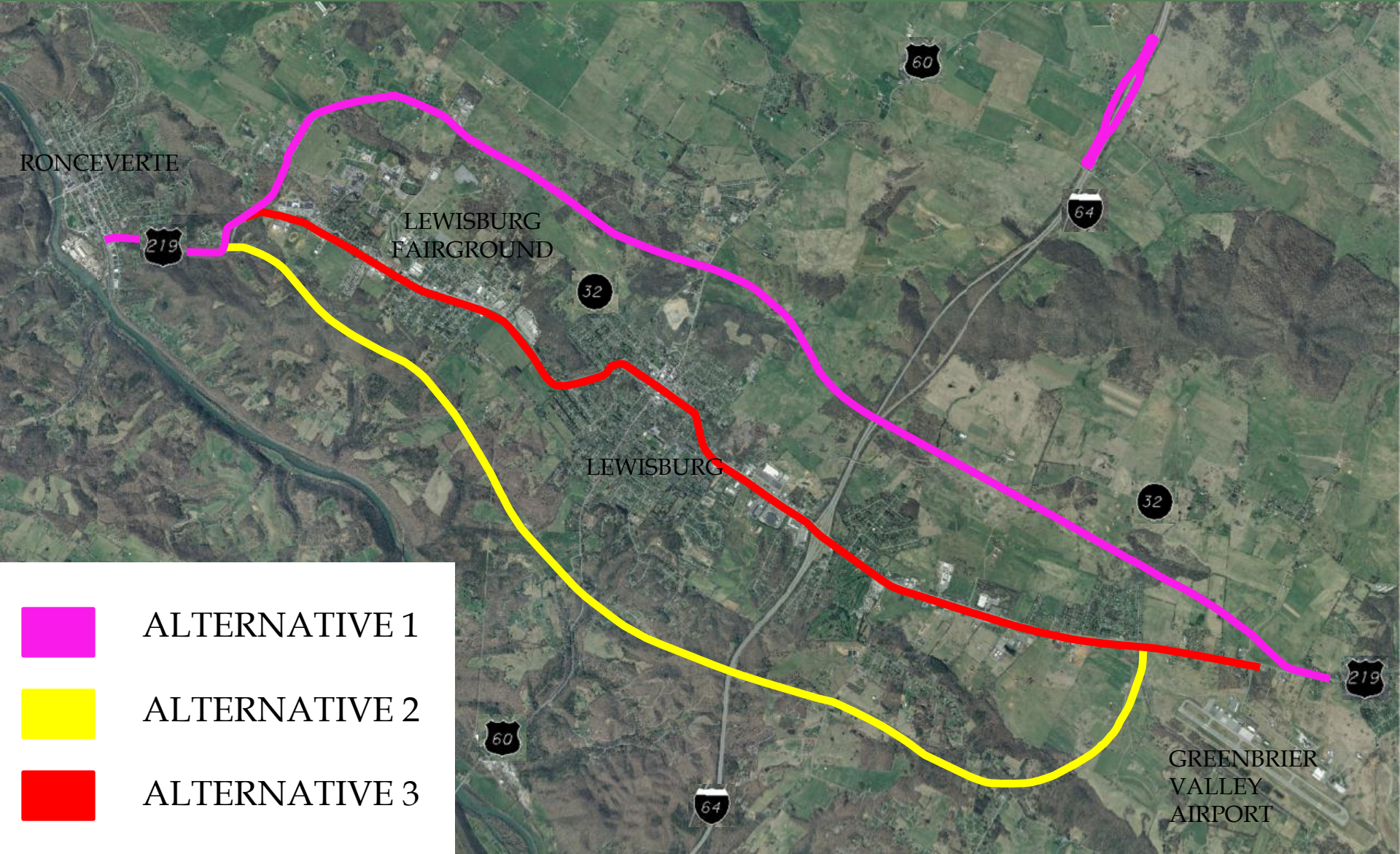




# EXISTING DTM



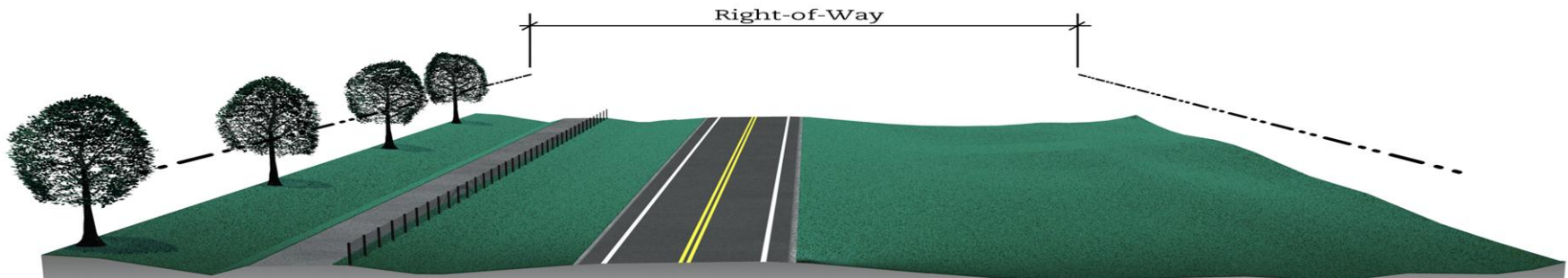
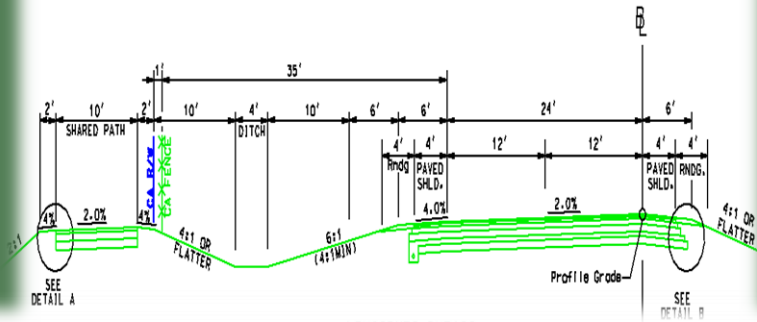
# LEWISBURG ALTERNATIVES



# ALTERNATIVE 1: PHASE 1

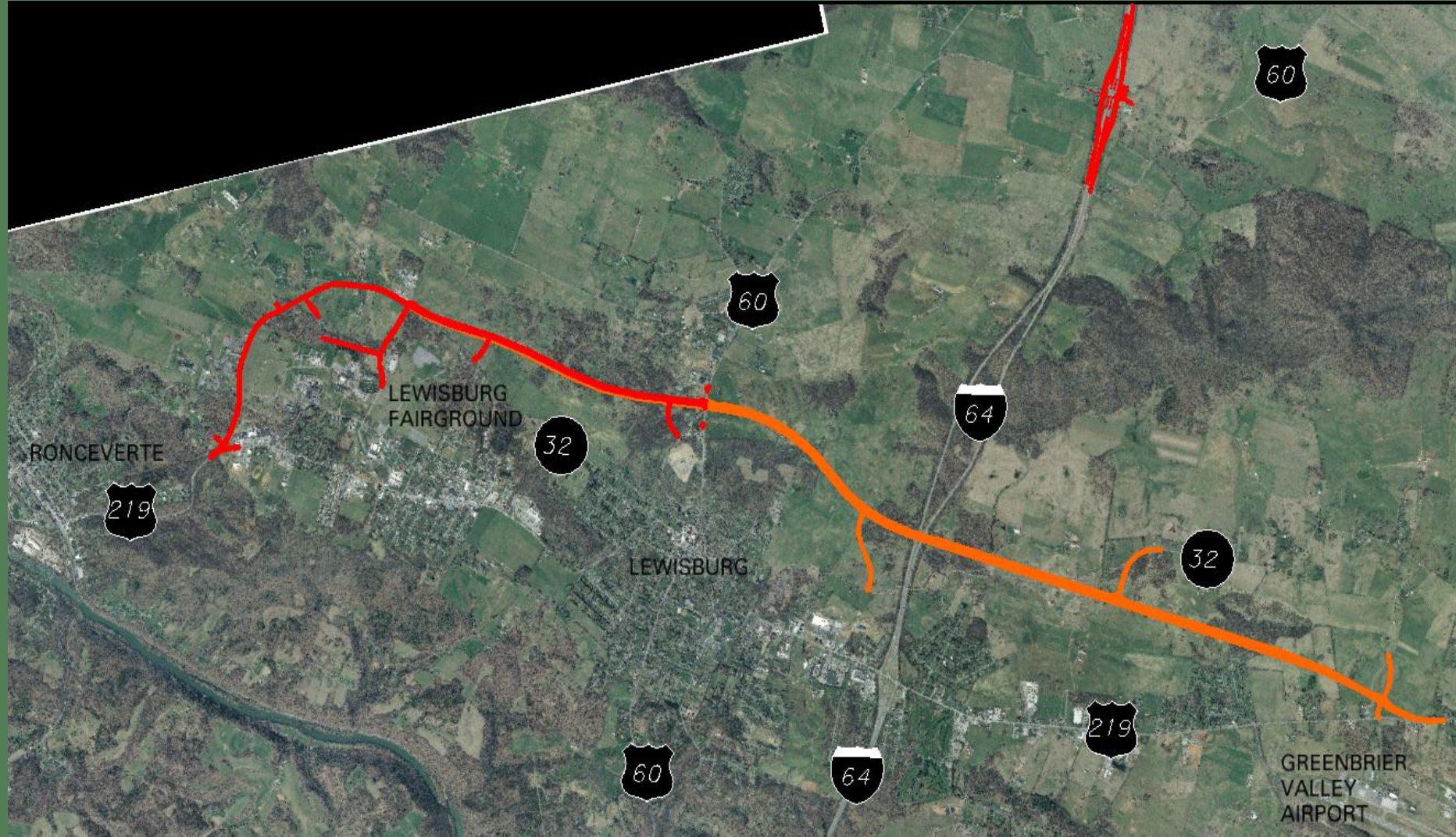


# ALTERNATIVE 1: PHASE 1 TYPICAL

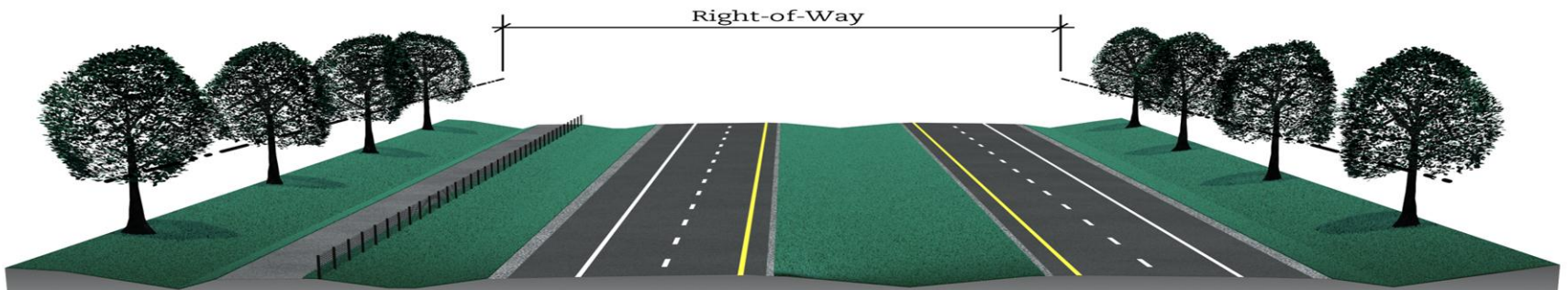
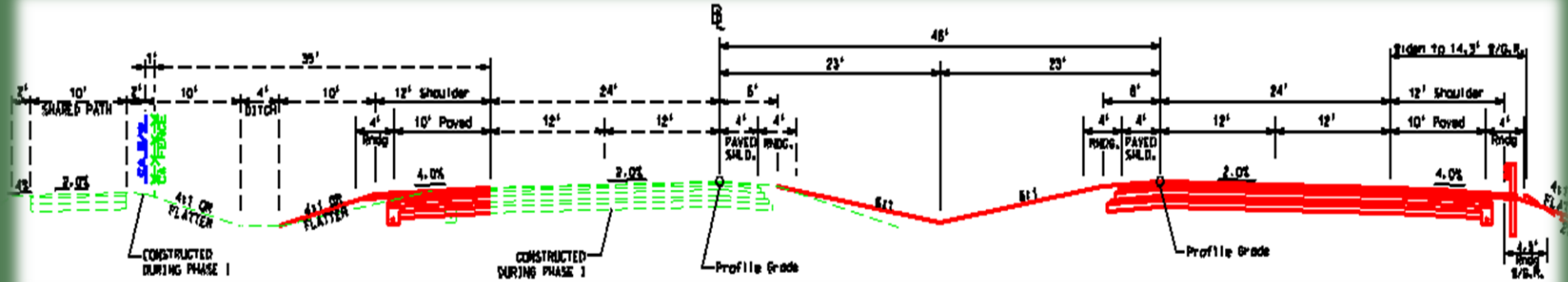


Lewisburg Corridor Study  
Typical Section -Phase I

# ALTERNATIVE 1: PHASE 2

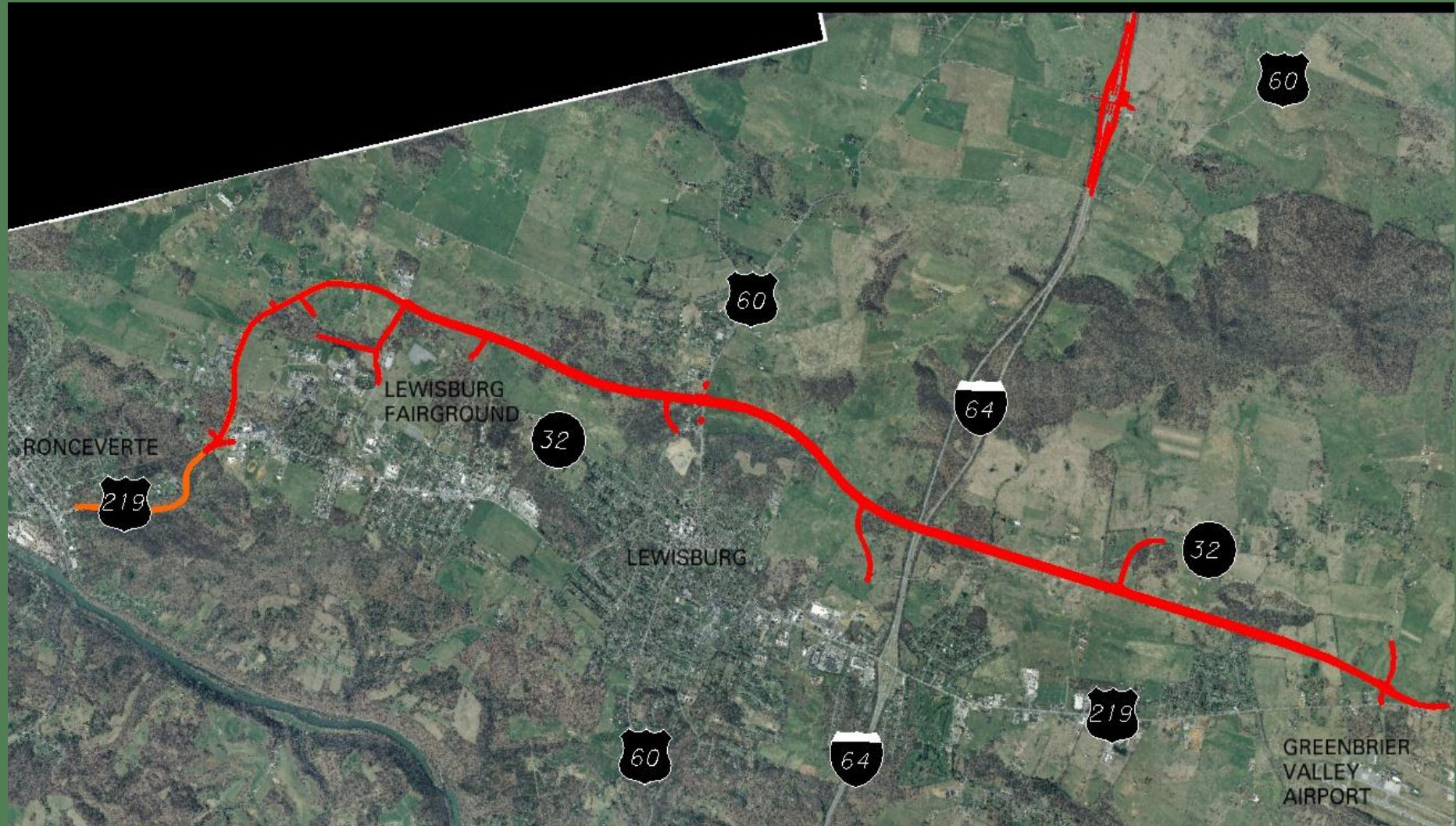


# ALTERNATIVE 1: PHASE 2 TYPICAL

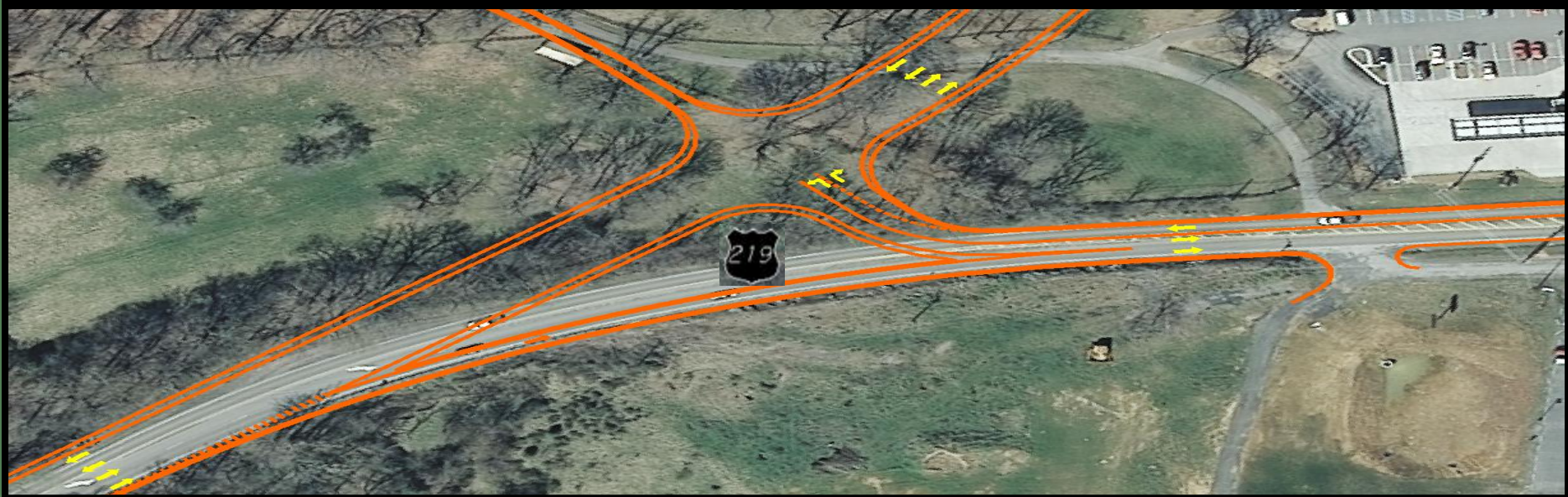
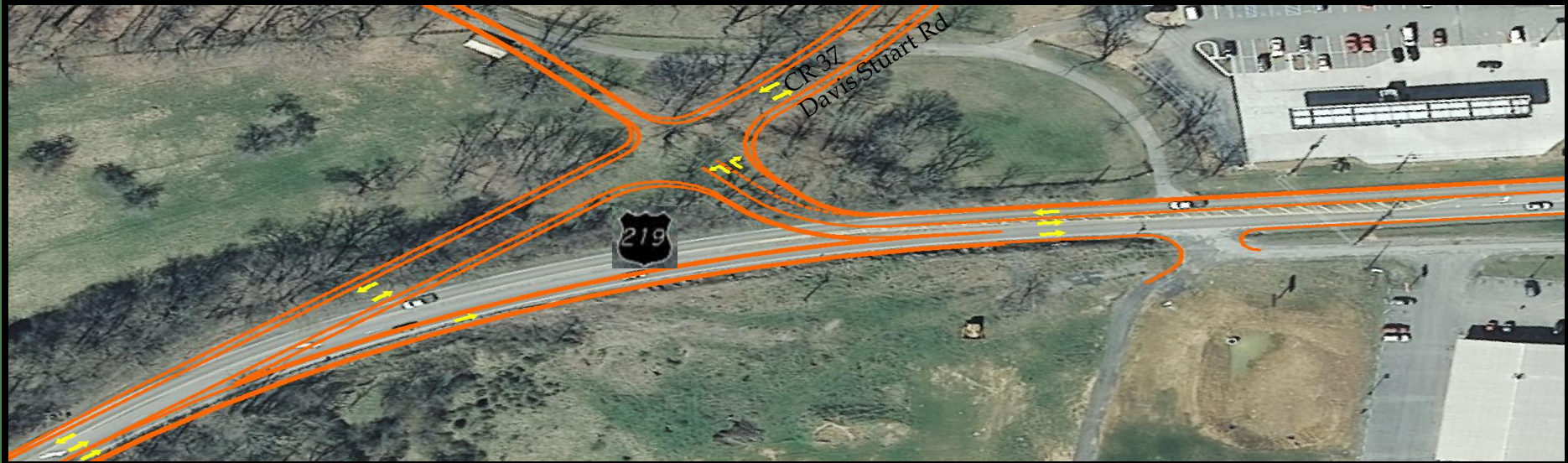


Lewisburg Corridor Study  
Typical Section -Phase II

# ALTERNATIVE 1: PHASE 3

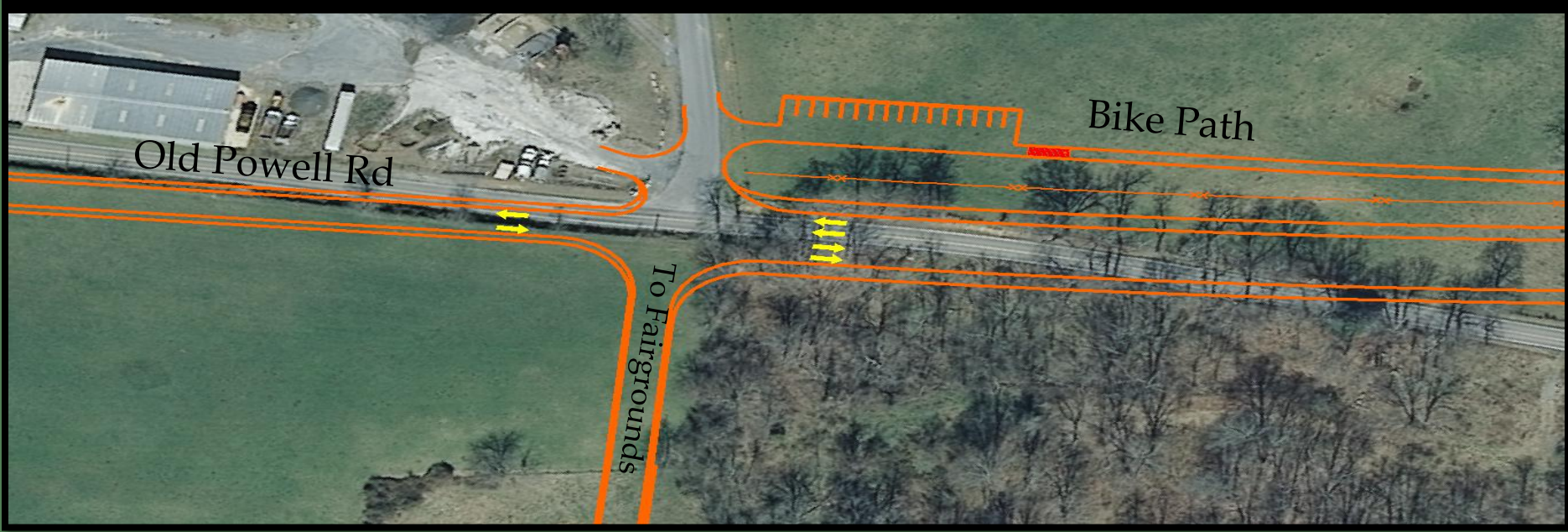
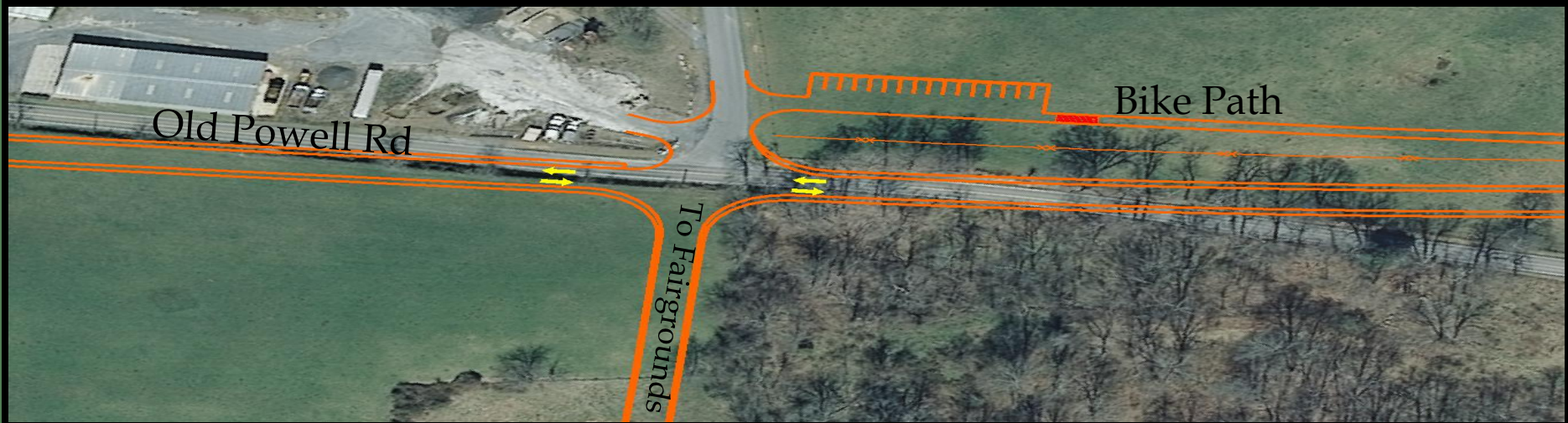


# ALTERNATIVE 1: PHASE 1 & 3 219 CONNECTOR @ RONCEVERTE

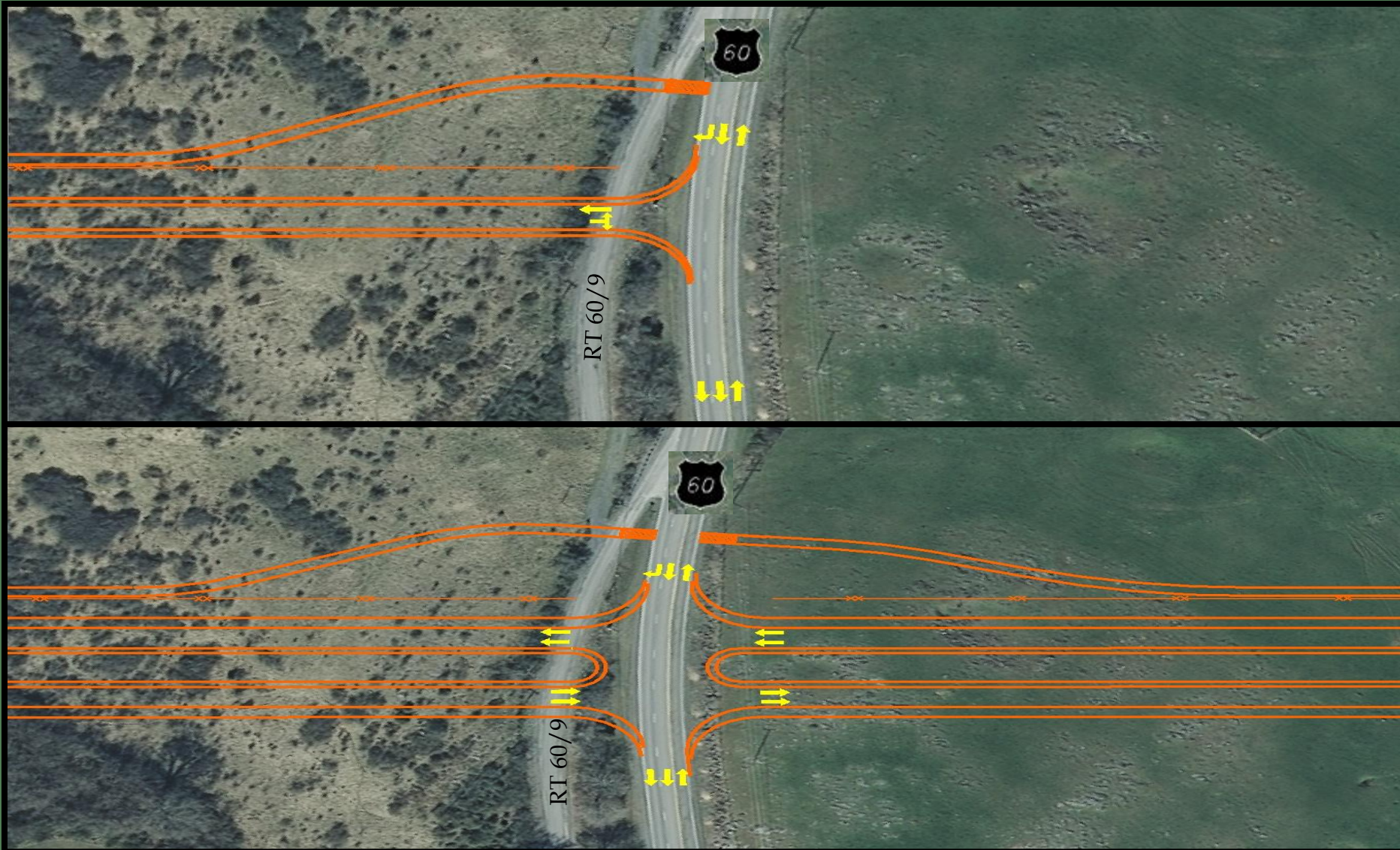




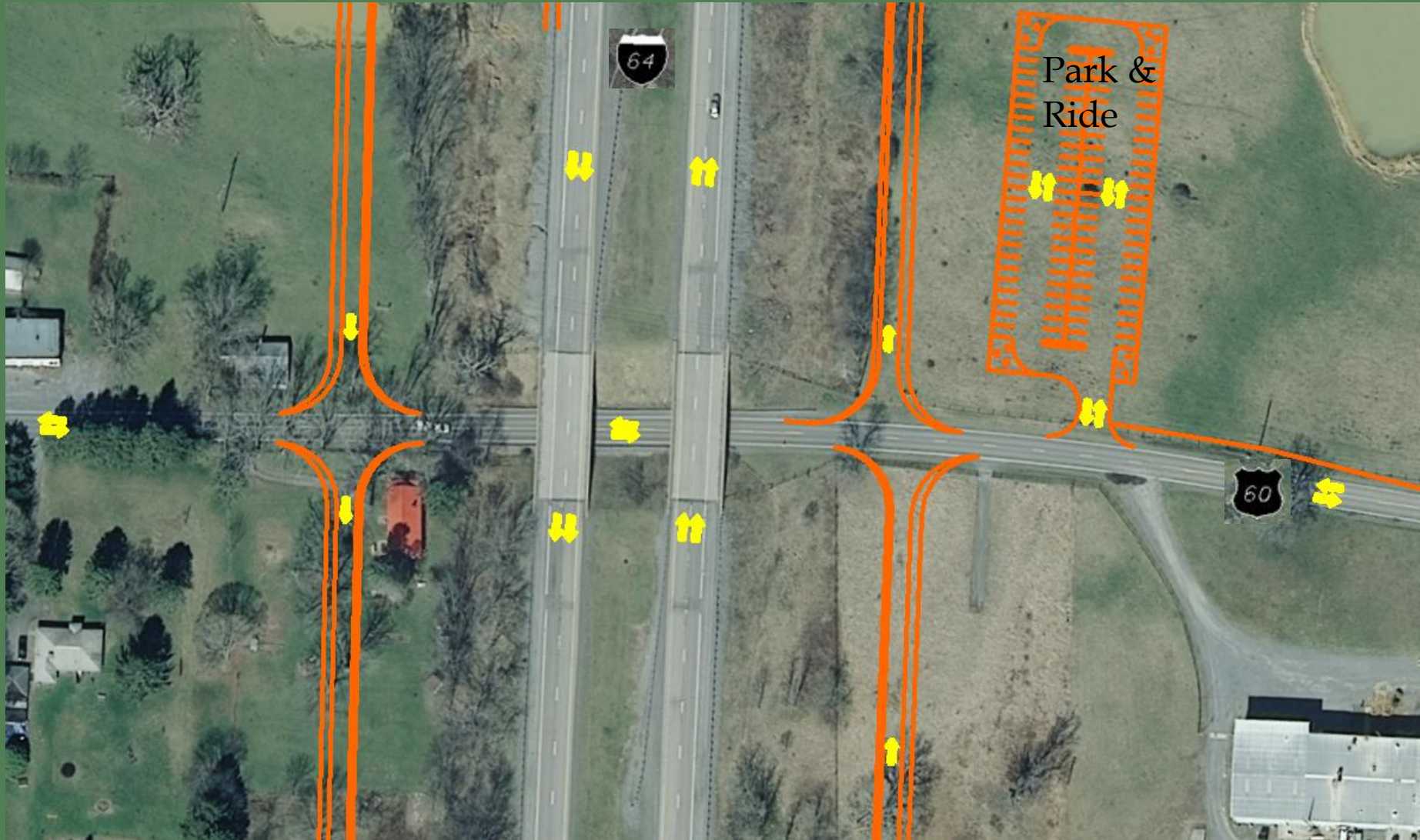
# ALTERNATIVE 1: PHASE 1 & 2 FAIRGROUND CONNECTOR



# ALTERNATIVE 1: PHASE 1 & 2 US 60 TIE-IN



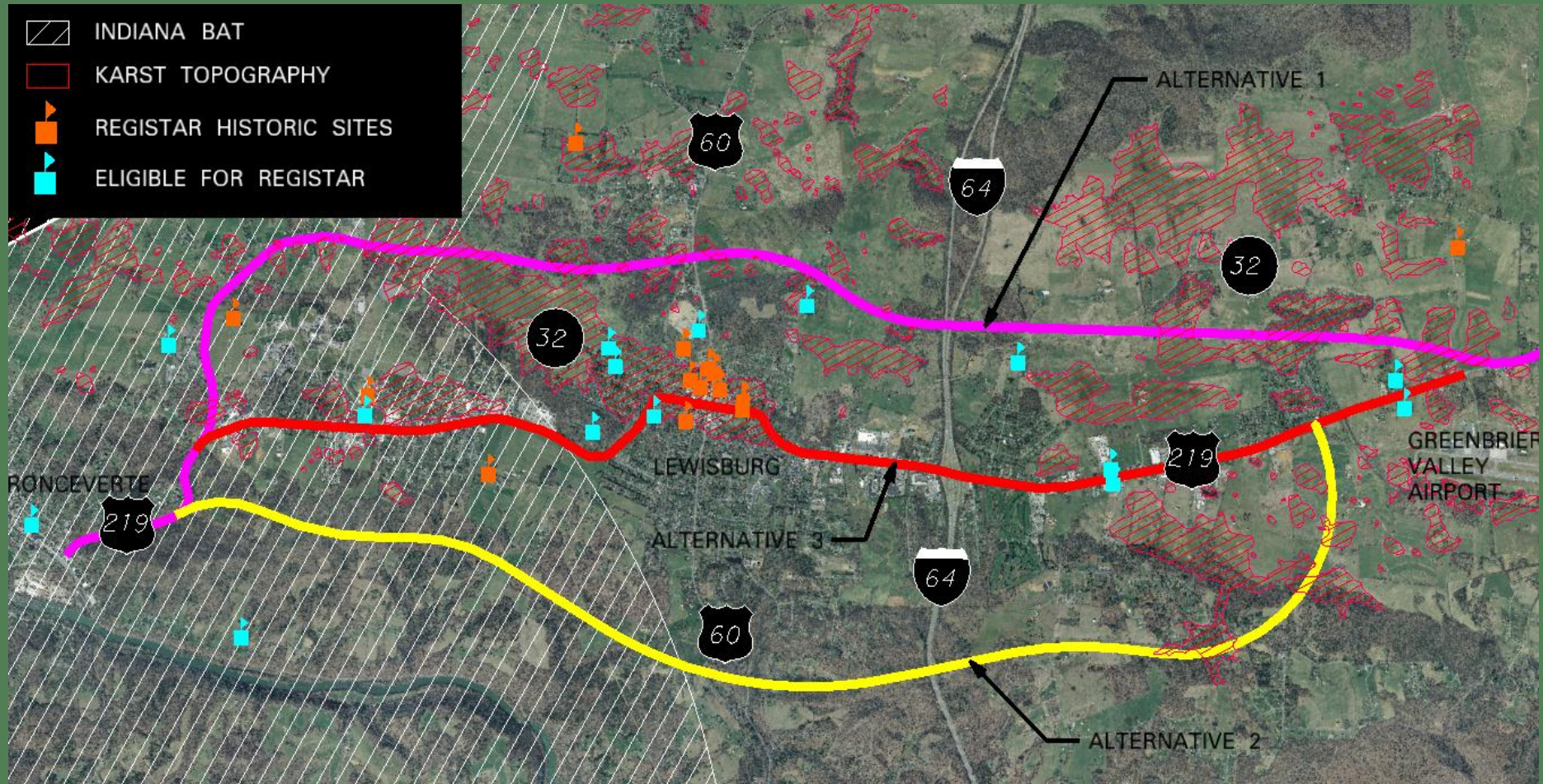
# ALTERNATIVE 1: PHASE 1 US 60/I-64 INTERCHANGE



# SHARED PATH EXAMPLE (PHOTOS FROM WV9)



# ENVIRONMENTAL IMPACT/ CONCERNS



**QUESTIONS?**

**THANK YOU**

*gary.w.graley@wv.gov*  
*304-558-9510*