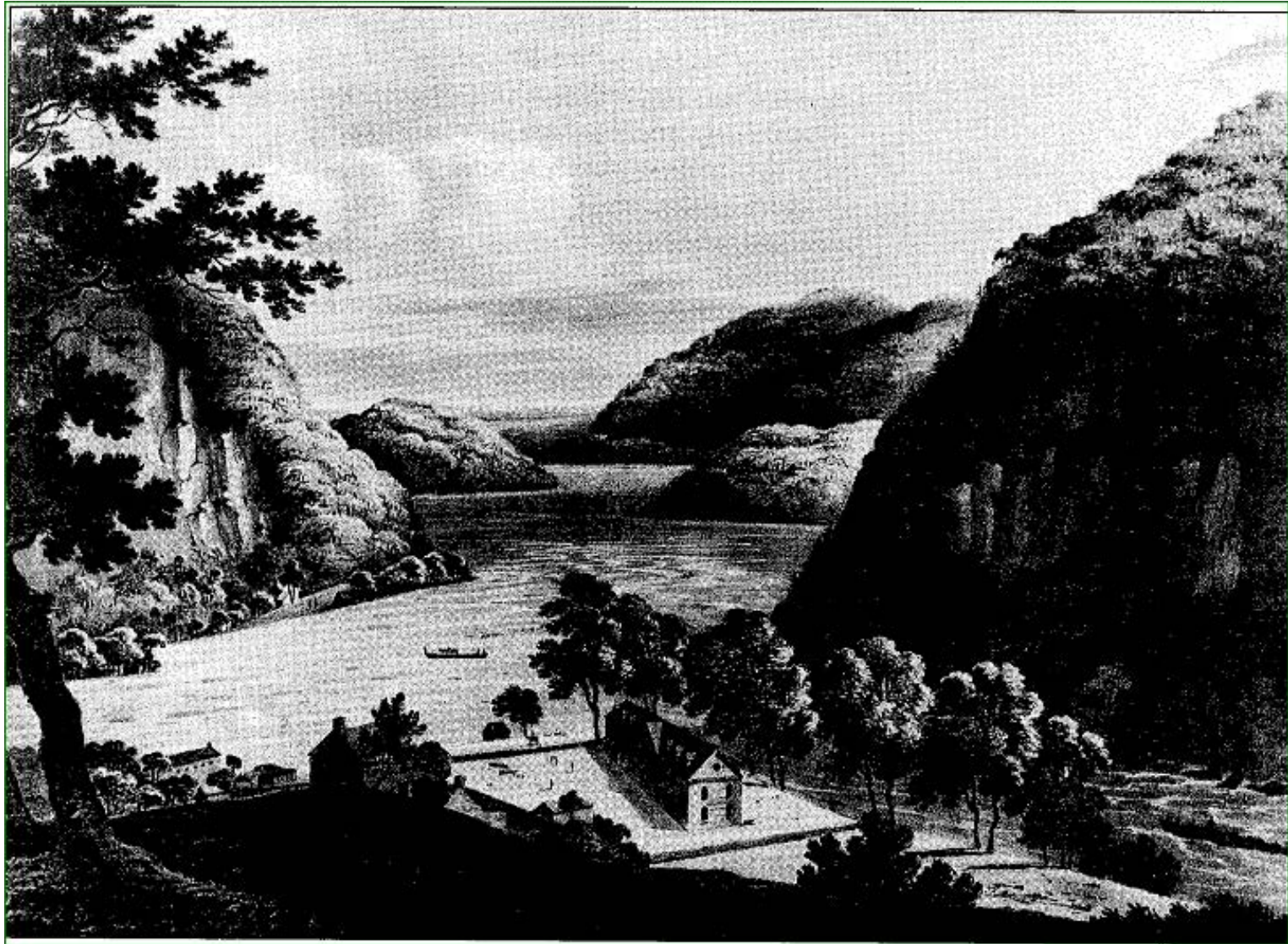


Harpers Ferry Back Ground



*Early Armory Buildings, & View
of the Gap 1803-1806*



Harpers Ferry National Historical Park



Areas To Cover

- National Park Service General Information
- Harpers Ferry NH Park Creation & Acreage
 - Park Staff Divisions
 - Park Themes
- Park Transportation System
past / present / future



Harpers Ferry National Historical Park

National Park Service Creation

The **National Park Service** is the [United States](#) federal agency that manages all [National Parks](#), many [National Monuments](#), and other conservation and historical properties with various title designations. It was created on August 25, 1916, by [Congress](#) through the National Park Service Organic Act. It is an agency of the United States Department of the Interior, which is a Cabinet Office of the executive branch, overseen by a Secretary, nominated by the President and confirmed by the Senate. Most of the direct management of the National Park Service is delegated by the Secretary to the National Park Service Director, who must also be confirmed by the Senate.

In 1872 the United States government established [Yellowstone National Park](#) as the world's first [national park](#). Forty-four years after the establishment of Yellowstone, the National Park Service was created as the result of lobbying by conservationists. Today the organization employs architects, landscape architects, curators, archeologist, historians, and other professionals in the care and preservation of more than 85 million acres of protected areas and nearly 400 national parks throughout the country. The national park system was established by those who understood the value of creation and man's responsibility to it. The National Park Service was the first organization of its kind in the world, and provides a living model for other nations wishing to establish and manage their own protected areas.



Harpers Ferry National Historical Park





Harpers Ferry National Historical Park

National Park Service Creation

| Classification ^[6] | Number | Acreage |
|--|-----------|----------------------|
| National Battlefield, National Battlefield Park, National Military Park, and National Battlefield Site | 27 | 61,648.16 |
| National Historical Park, National Historic Site, and International Historic Site | 120 | 200,395.23 |
| National Lakeshore | 4 | 228,857.23 |
| National Memorial | 29 | 8,531.78 |
| National Monument | 75 | 2,706,954.60 |
| National Park | 57 | 51,914,772.65 |
| National Parkway | 4 | 173,865.28 |
| National Preserve and National Reserve | 21 | 23,742,879.74 |
| National Recreation Area | 18 | 3,692,222.58 |
| National River and National Wild and Scenic River and River way | 17 | 738,089.17 |
| National Scenic Trail | 3 | 225,356.57 |
| National Seashore | 10 | 594,518.33 |
| Other Designations (White House, National Mall, etc) | 11 | 39,374.33 |
| Totals | 396 | 84,327,566.01 |



Harpers Ferry National Historical Park

National Park Service Creation

The



57

- Acadia • American Samoa • Arches • Badlands • Big Bend • Biscayne • Black Canyon of the Gunnison • Bryce Canyon
- Canyon lands • Capitol Reef • Carlsbad Caverns • Channel Islands • Congaree • Crater Lake • Cuyahoga Valley
- Death Valley • Denali • Dry Tortugas • Everglades • Gates of the Arctic • Glacier • Glacier Bay • Grand Canyon
- Grand Teton • Great Basin • Great Sand Dunes • Great Smoky Mountains • Guadalupe Mountains • Haleakala
- Hawaii Volcanoes • Hot Springs • Isle Royale • Joshua Tree • Katmai • Kenai Fjords • Kings Canyon • Kobuk Valley
- Lake Clark • Lassen Volcanic • Mammoth Cave • Mesa Verde • Mount Rainier • North Cascades • Olympic
- Petrified Forest • Redwood • Rocky Mountain • Saguaro • Sequoia • Shenandoah • Theodore Roosevelt • Virgin Islands
- Voyageurs • Wind Cave • Wrangell-St. Elias • Yellowstone • Yosemite • Zion



Harpers Ferry National Historical Park

National Park Service Creation



National Park Service Arrowhead

Agency overview

| | |
|-------------------------|--|
| Formed | August 25, 1916 |
| Headquarters | Main Interior Building (MIB), Washington, D.C. |
| Employees | 12,000 permanent, 5,000 seasonal |
| Annual Budget | \$2.256 billion (2006) |
| Agency Executive | Jon Jarvis, Director |
| Parent agency | Department of the Interior |

Website

www.nps.gov

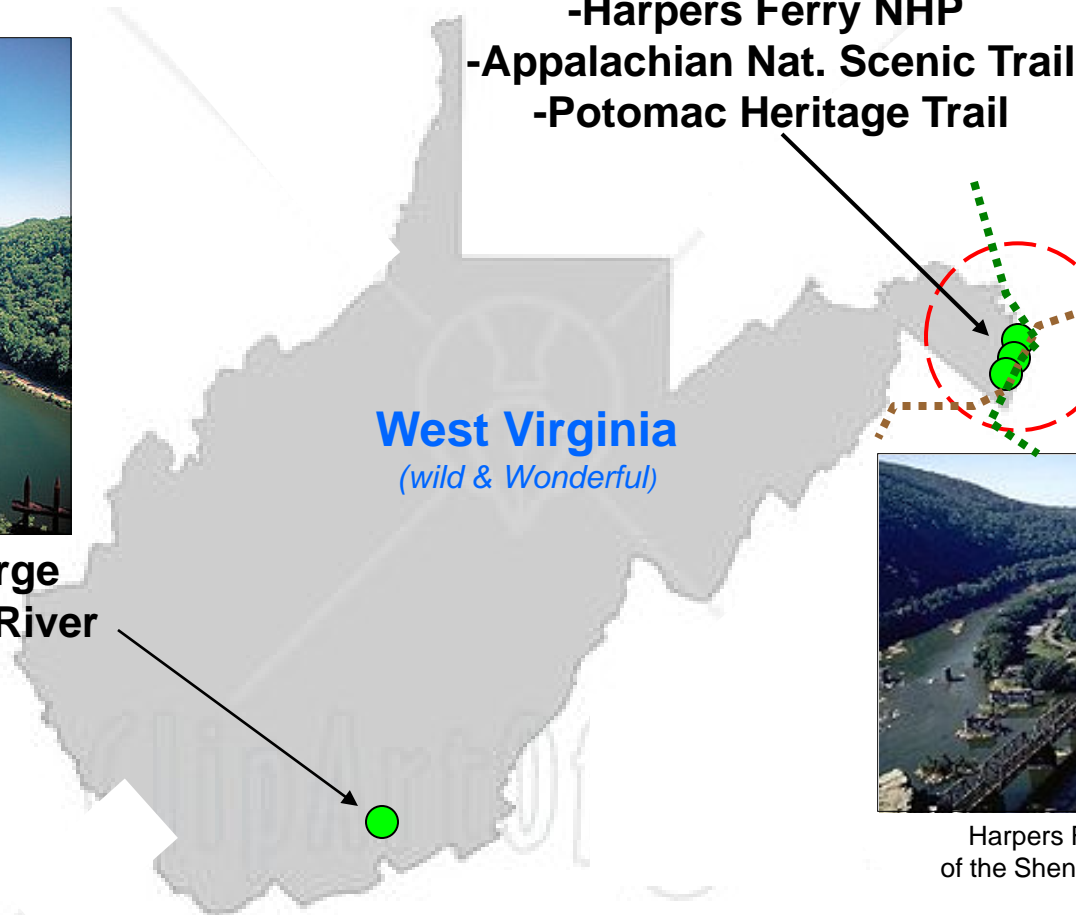


Harpers Ferry National Historical Park

National Parks in WV



-New River Gorge
National Scenic River



Harpers Ferry
Historic Lower Town



Harpers Ferry at the Confluence
of the Shenandoah & Potomac Rivers



Harpers Ferry National Historical Park

Harpers Ferry NHP General Information

- Park Acreage, 3,645.79
- Park Located in 3 States
- Park Elevations Range 256' to 1,444'
- Park Pass, 10.00 per vehicle, 5.00 per bike or walk-in
- Park Bus Transportation Sys., 6 ADA Buses, 4 ADA Vans
- 256,000 Visitors in 2011
- Park Structures & Buildings 90 (50 Historic)
- 6 NPS Units, 3 Nat. Trails, 2 Rivers, 2 Rail Roads, 1 Highway
- 20 Miles of Formal Trails



Harpers Ferry National Historical Park

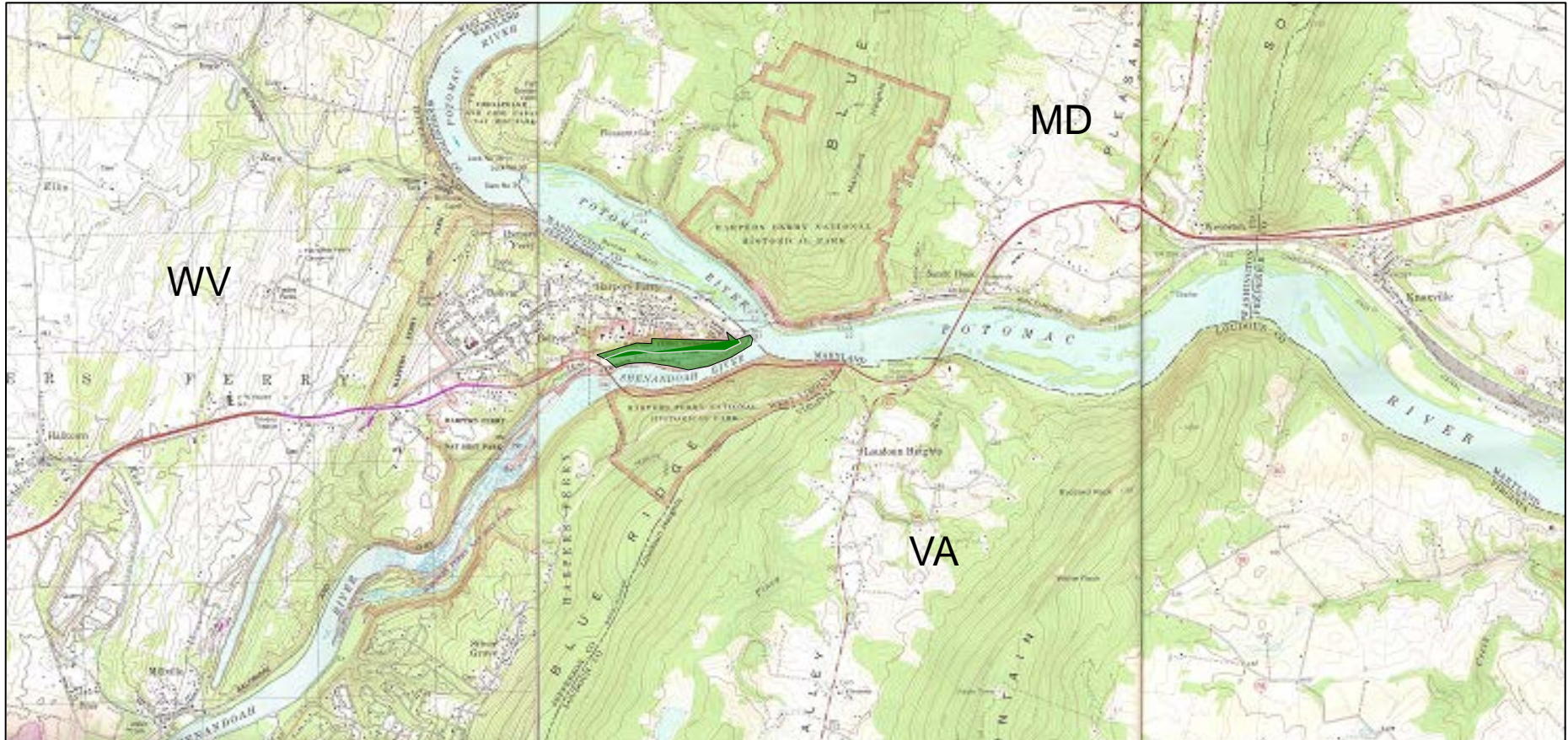


Harpers Ferry NH Park Creation & Acreage

- Park Created as National Monument 1944
- Park Designated a National Historical Park 1963



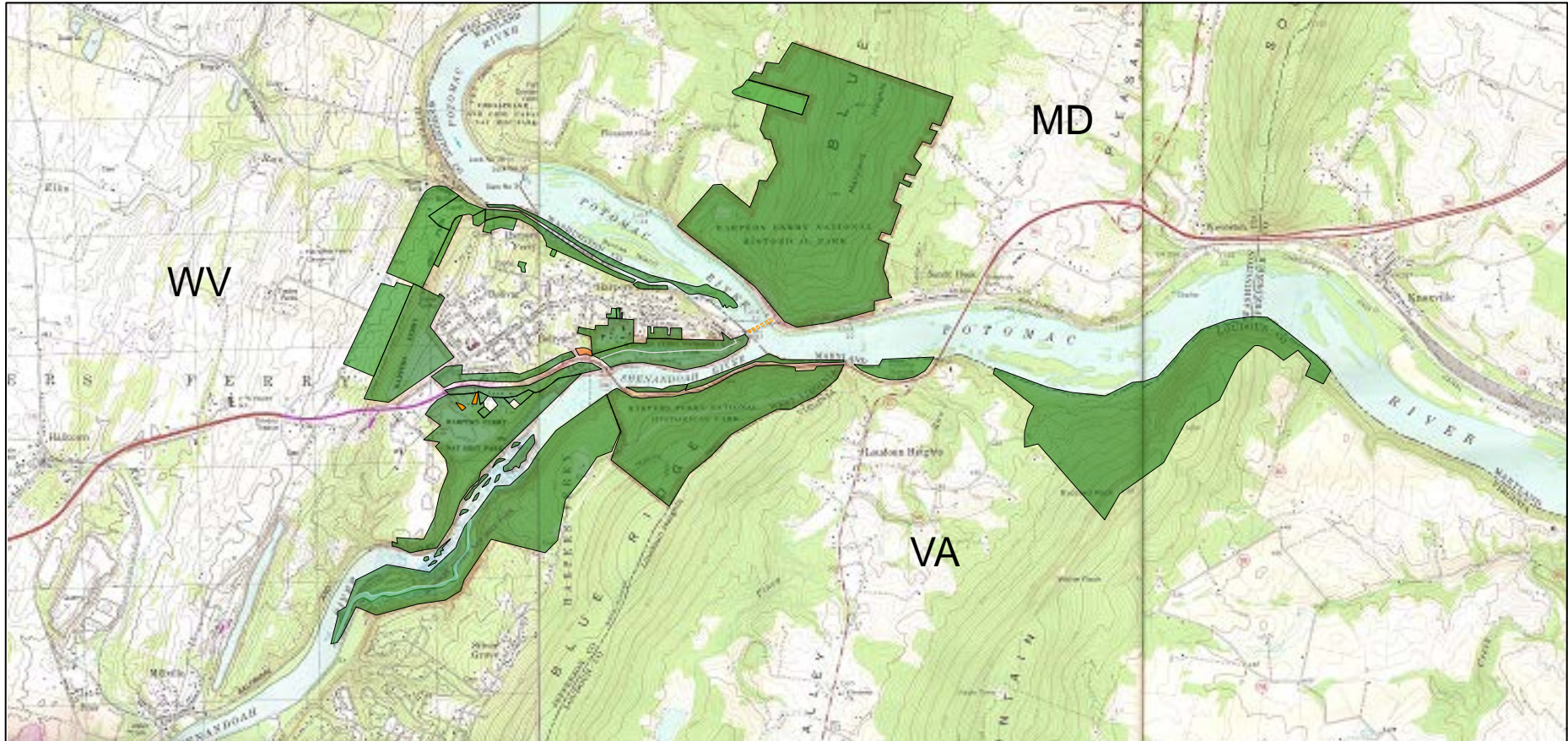
1944 Harpers Ferry NHP Deeded Properties 180.00 Acres



Lower Town & Virginius Island



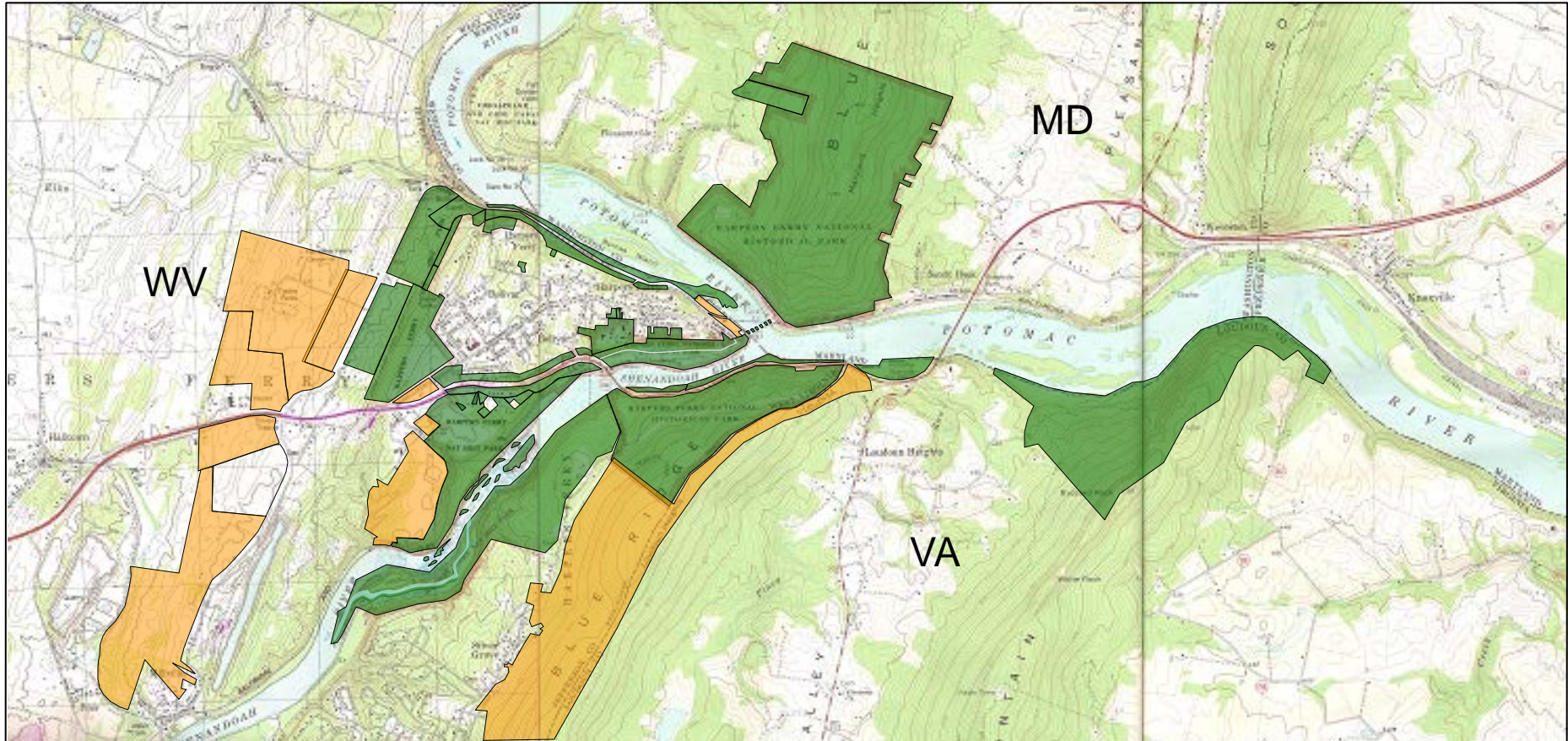
1944 - 1998 Harpers Ferry NHP Total Properties 2,405.38



Steigman Land Md Hgts, CWT-USL, Nash Farm, Shipley & Grandview,
Cavalier Heights, Bridge Piers, S. Garret Land, Tattersall Land



1999 - 2007 Harpers Ferry NHP Added Properties 1,240 Acres (3,645.75)



CWT-SHR-N, Armory Grounds-JB Fort Site-Train Station, Faulkner, Murphy Farm
Perry Orchard SHR-S, Ott Farm SHR-N, F&W SHR-S,
Ambrose Land, Drumheller Land,



Harpers Ferry National Historical Park



Park Staff & Divisions

- Administrative 8
- Law Enforcement 11
- Interpretation, Education & Partnerships 30
- Cultural Resources & Natural Resources 5
- Maintenance & Design 42



Harpers Ferry National Historical Park



Park Sites to See



Engine House (John Brown's Fort)



Living History (Bolivar Heights)



View From Maryland Heights



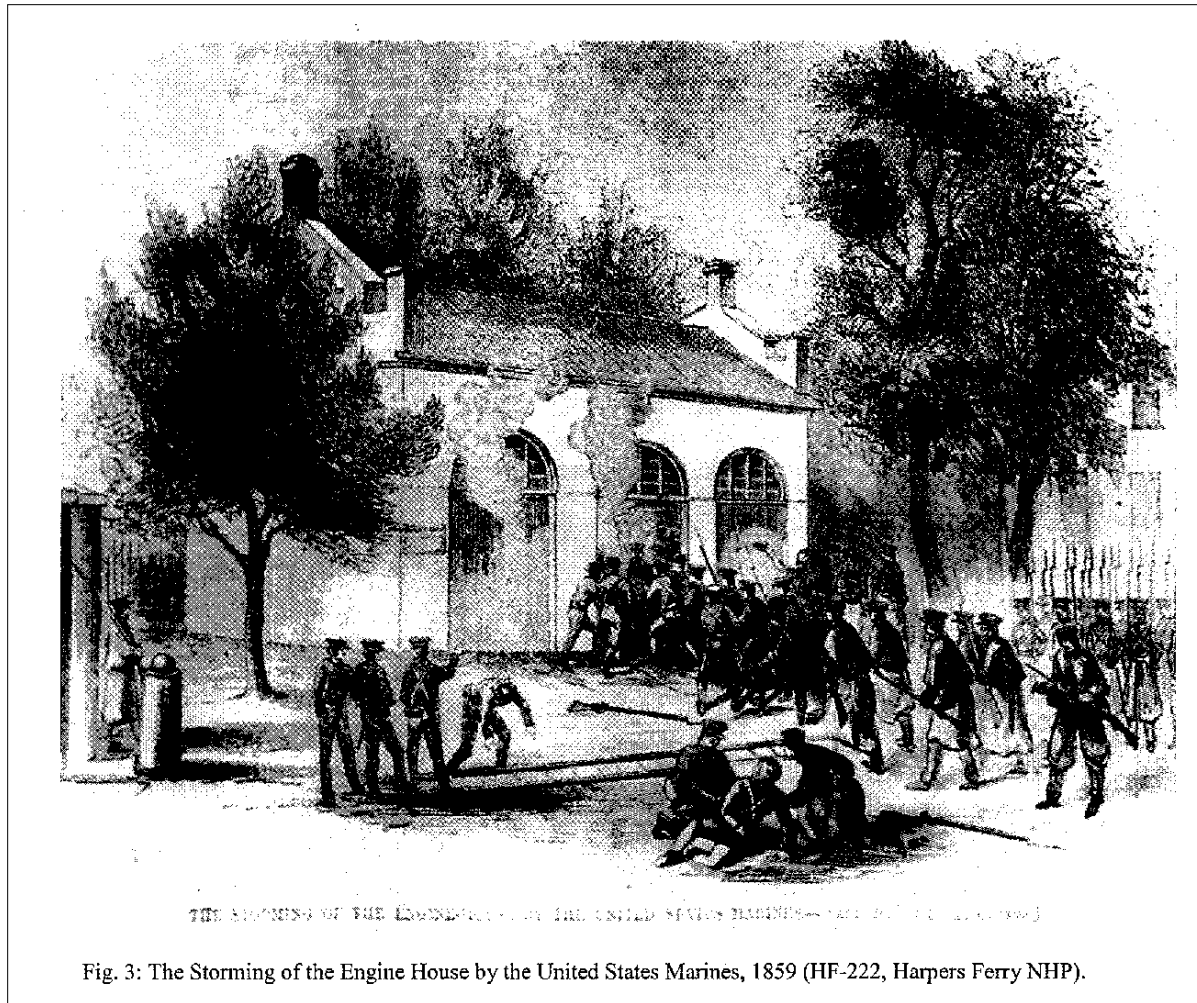
Murphy Farm



Jefferson Rock

1944 - 1970 Primary Theme

The John Brown Raid October 1859





Harpers Ferry National Historical Park



-Park Themes

- Transportation 1747 - Present
- U.S. Armory & Interchangeable Parts 1803 -1862
 - Lewis & Clark 1803
 - **John Brown Raid 1859**
 - Civil War Battles, 1861, 1862 (Sept 14-16), & 1864
 - African American History
(*Storer College 1867-55 & Niagara Movement 1906*)
 - Natural and Scenic Beauty

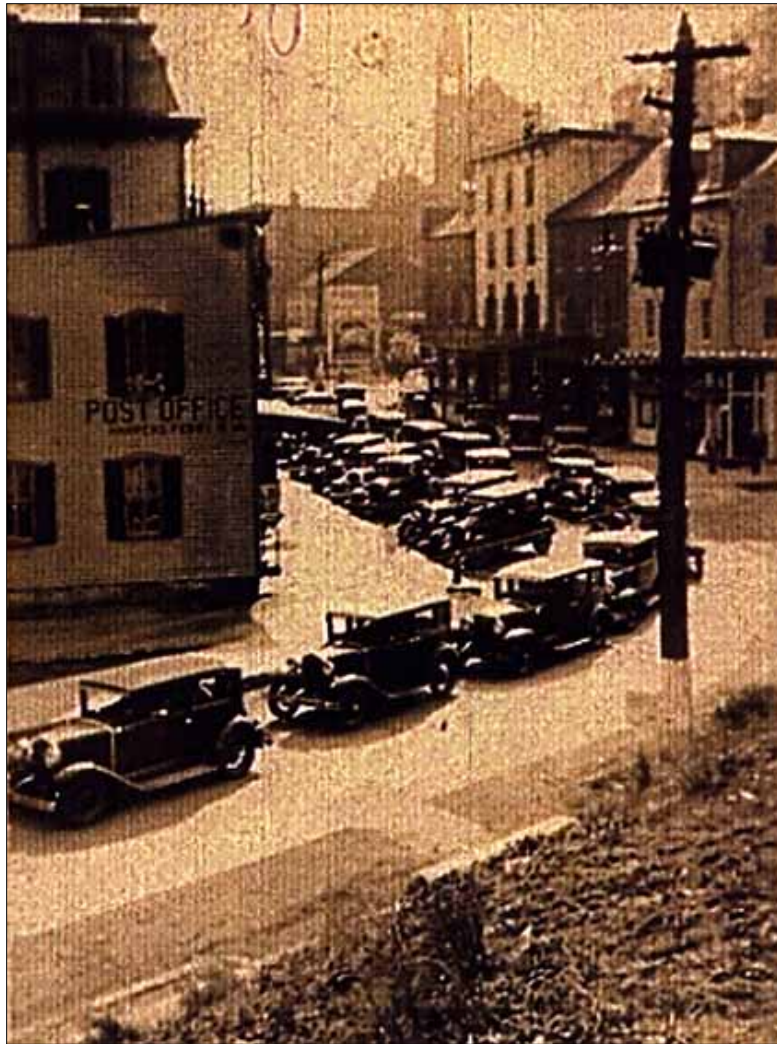


Harpers Ferry National Historical Park

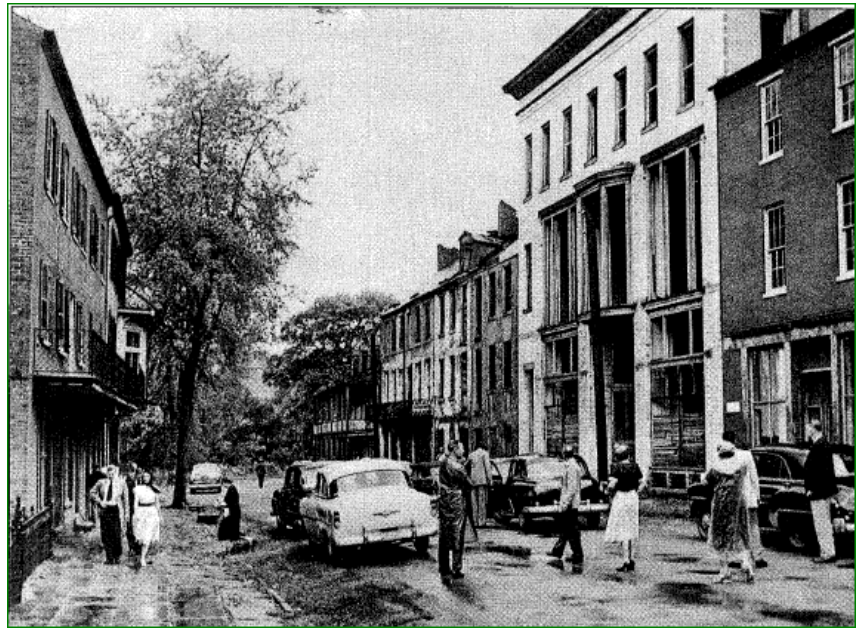


- Harpers Ferry Transportation Modes Through Time

- Robert Harper's Ferry Operation 1747
 - C&O Canal 1833
 - B&O Rail Road 1834
- HF, Charles Town, Smithfield Turnpike (WV)
 - Hillsboro Turnpike, VA
 - Frederick Turnpike, MD
- Camp Ordway, Cross Country Flight 1911
 - Appalachian Trail, (1925) Open 1937
 - The Family POV 1944 - Present



Shenandoah St Traffic Congestion 1924
(Today the Historic Lower)

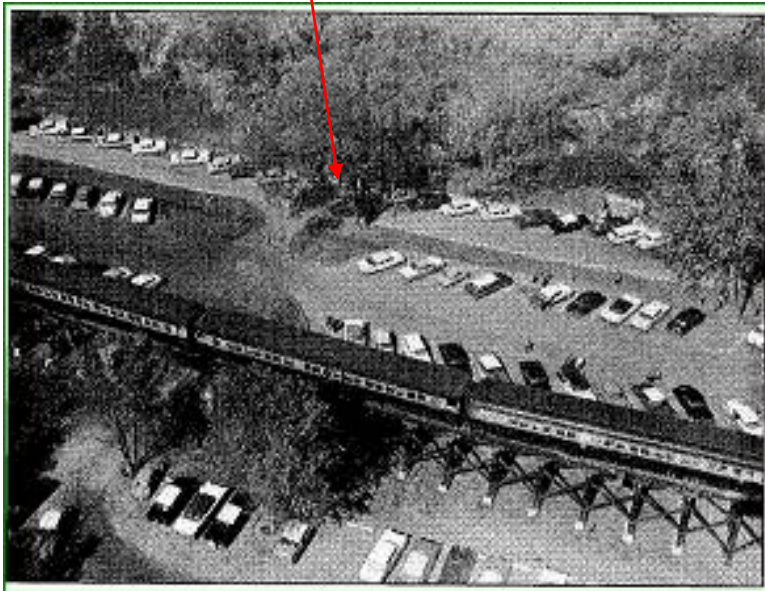


Shenandoah Street
Parking



Park Visitation on
Hog Alley 1955

A formal parking lot was created in 1965, roughly 300 spaces



*Aerial view of parking between Hamilton St and Shenandoah St.
(Today's Lower Town Bus Depot Stop)*

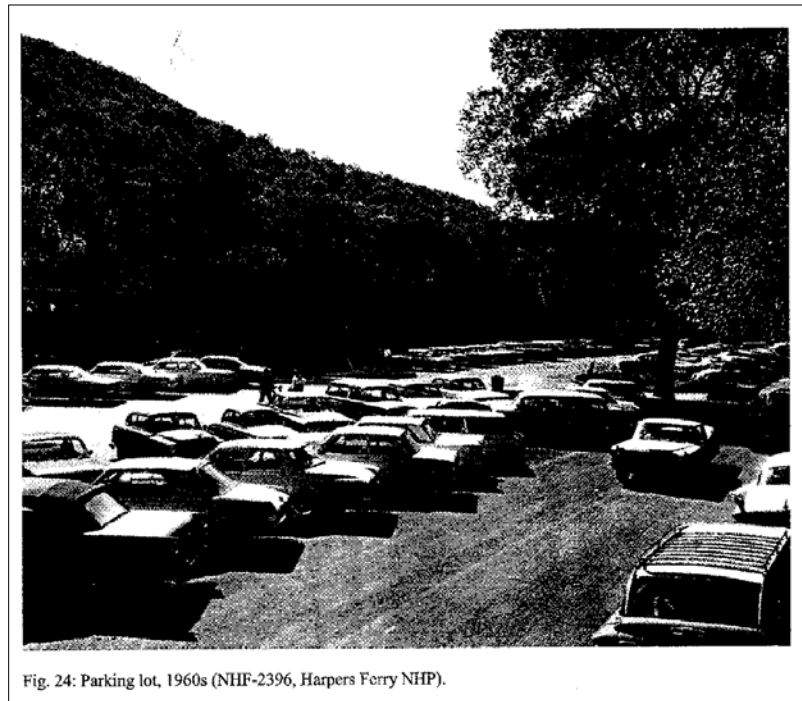


Fig. 24: Parking lot, 1960s (NHP-2396, Harpers Ferry NHP).



1896 View
Maryland Heights



1910



1995



1955



April 2007



1932 Aerial

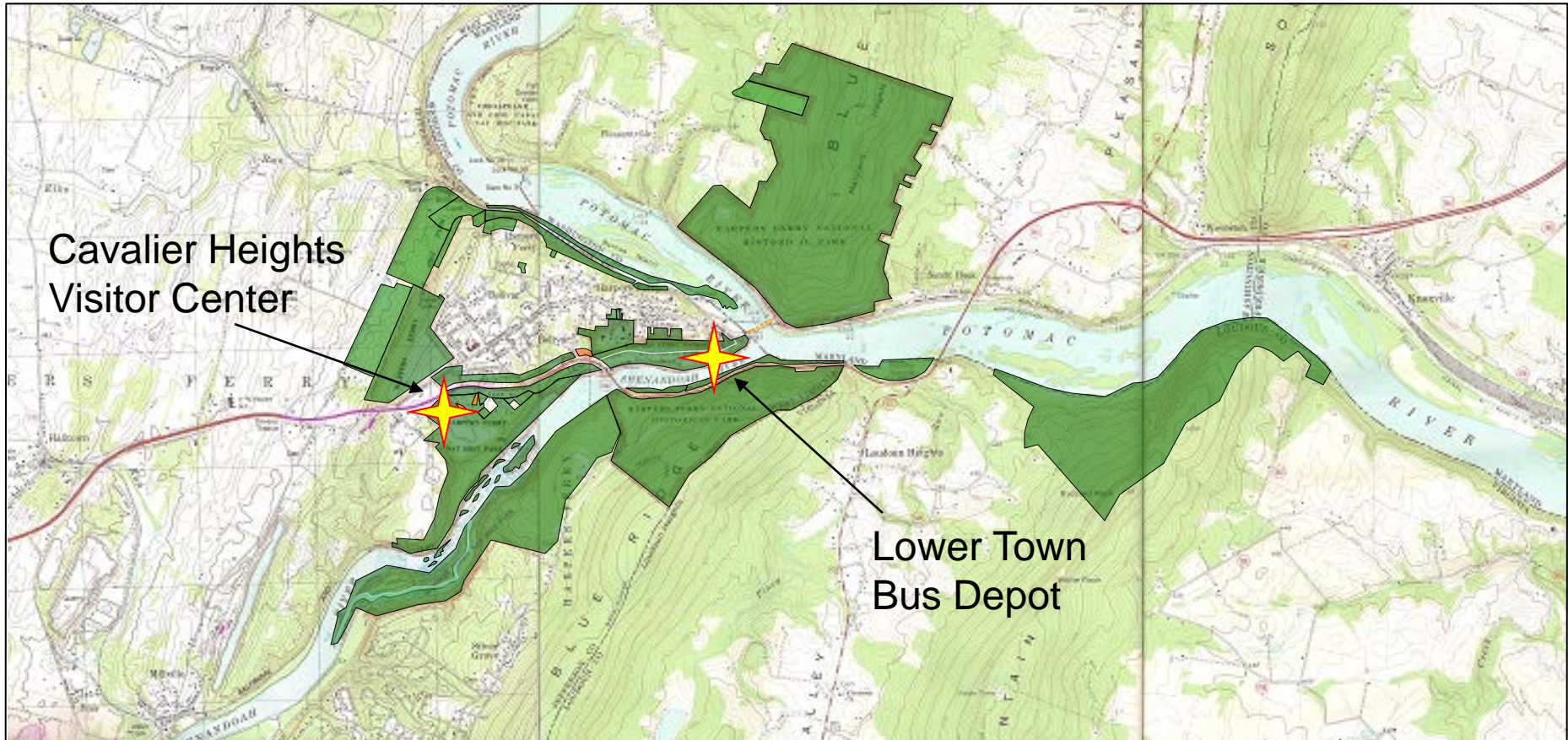


1991 Bus Transportation System Added



1944 - 1998 Harpers Ferry NHP

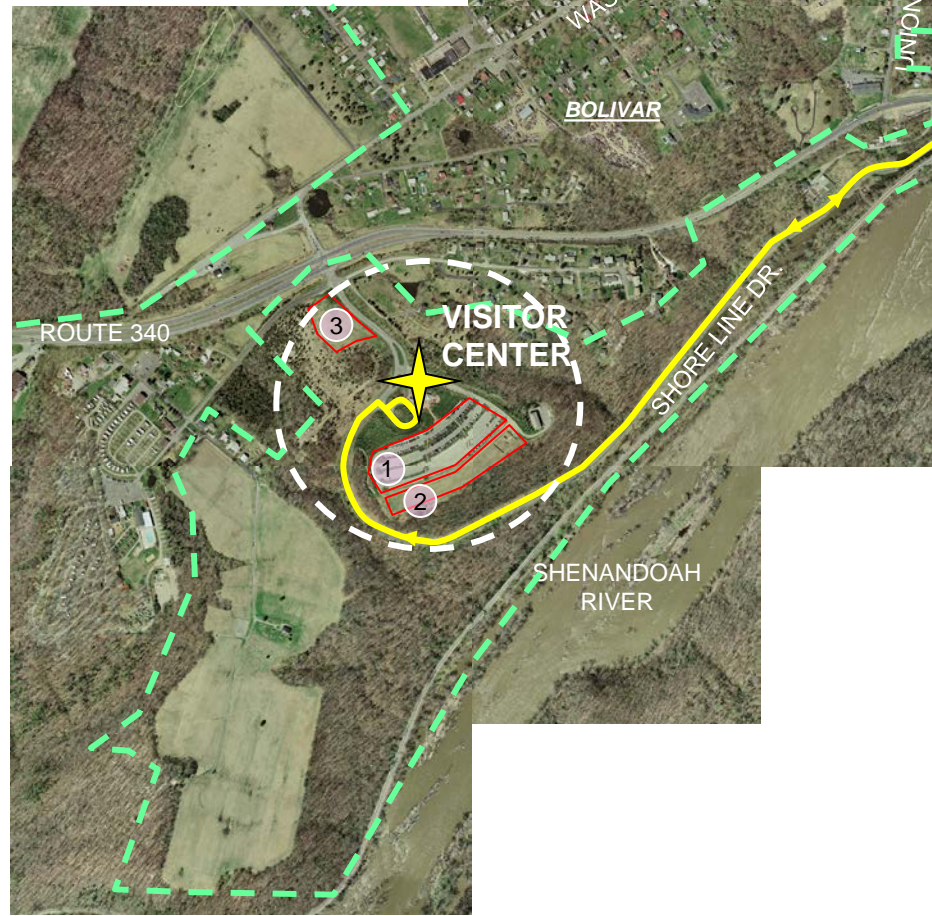
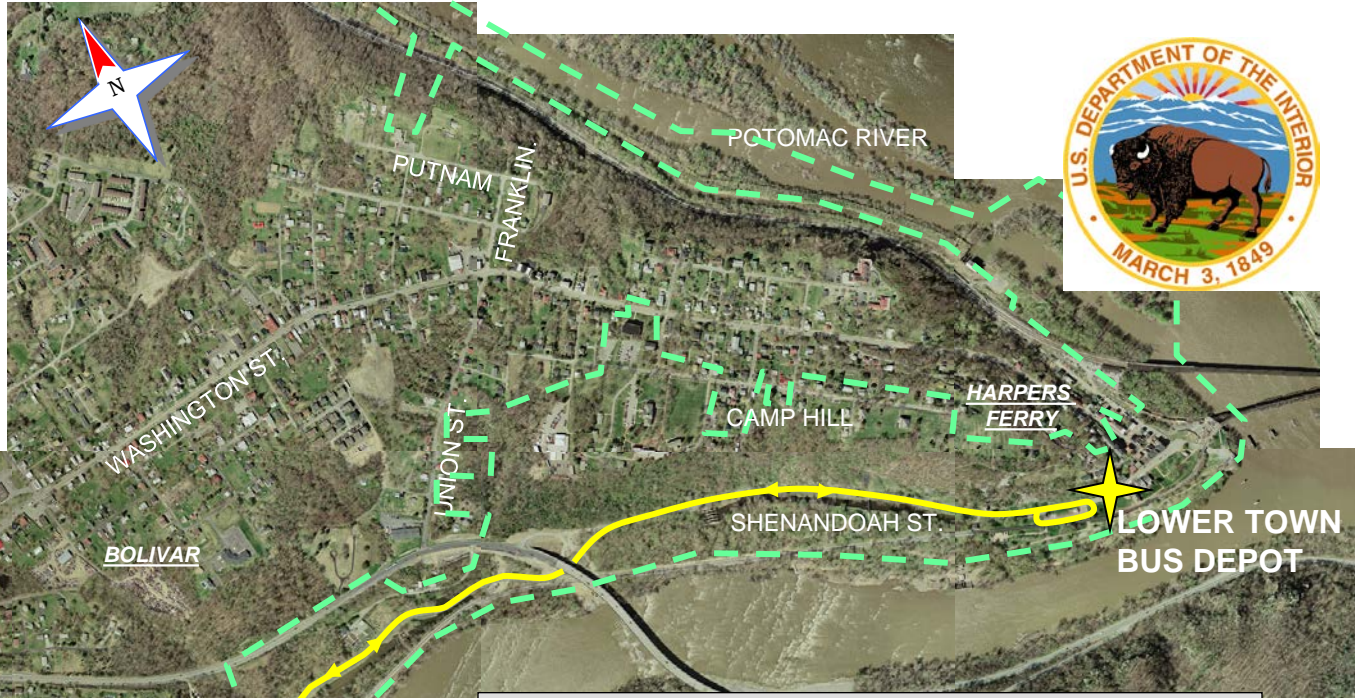
Total Properties 2,405.38




Steigman Land Md Hgts, CWT-USL, Nash Farm, Shipley & Grandview,
Cavalier Heights, Bridge Piers, S. Garret Land, Tattersall Land




HFNHP 2009 Bus Route



LEGEND


BUS ROUTE 
 (distance: 2.2 miles, 4 minutes one-way, 25 mph)

PARKING LOTS 

Lot 1: 408 10' x 20' spaces
 + 22 ADA spaces
 + 22, 40' Bus spaces

Lot 2: 450 grass spaces

Lot 3: 350 grass spaces
1,252

PARK BOUNDARY 



Harpers Ferry National Historical Park

Visitor Count Changes From 1999 - 2011

| | |
|------|---------|
| 1999 | 333,738 |
| 2000 | 317,699 |
| 2001 | 325,156 |
| 2002 | 286,289 |
| 2003 | 264,478 |
| 2004 | 260,783 |
| 2005 | 241,807 |
| 2006 | 267,501 |
| 2007 | 249,908 |
| 2008 | 254,162 |
| 2009 | 275,044 |
| 2010 | 268,822 |
| 2011 | 255,348 |

| | Recreation Visitors |
|----------------------|---------------------|
| 2011 | |
| January | 1,494 |
| February | 2,976 |
| March | 10,184 |
| April | 22,149 |
| May | 31,216 |
| June | 35,505 |
| July | 42,207 |
| August | 27,303 |
| September | 23,790 |
| October | 37,618 |
| November | 15,677 |
| December | 5,229 |
| 2011 Totals | 255,348 |
| Report Totals | 255,348 |



Harpers Ferry National Historical Park



Bus Fleet Changes From 1999 - 2007



1991 Flexible Industry Bus
Fleet 6 Buses, 35', 38 Pax
Retired 175,000 – 300,000 miles
14 year use
Non – ADA Accessible
Diesel



2006 Gillig Industry Bus
Fleet 6 Buses, 35', 37 Pax
Retired N/A
ADA Accessible (2 wheel chairs)
Bike Racks
Bio-Diesel



Harpers Ferry National Historical Park



Mid Size Van Changes From 1999 - 2007



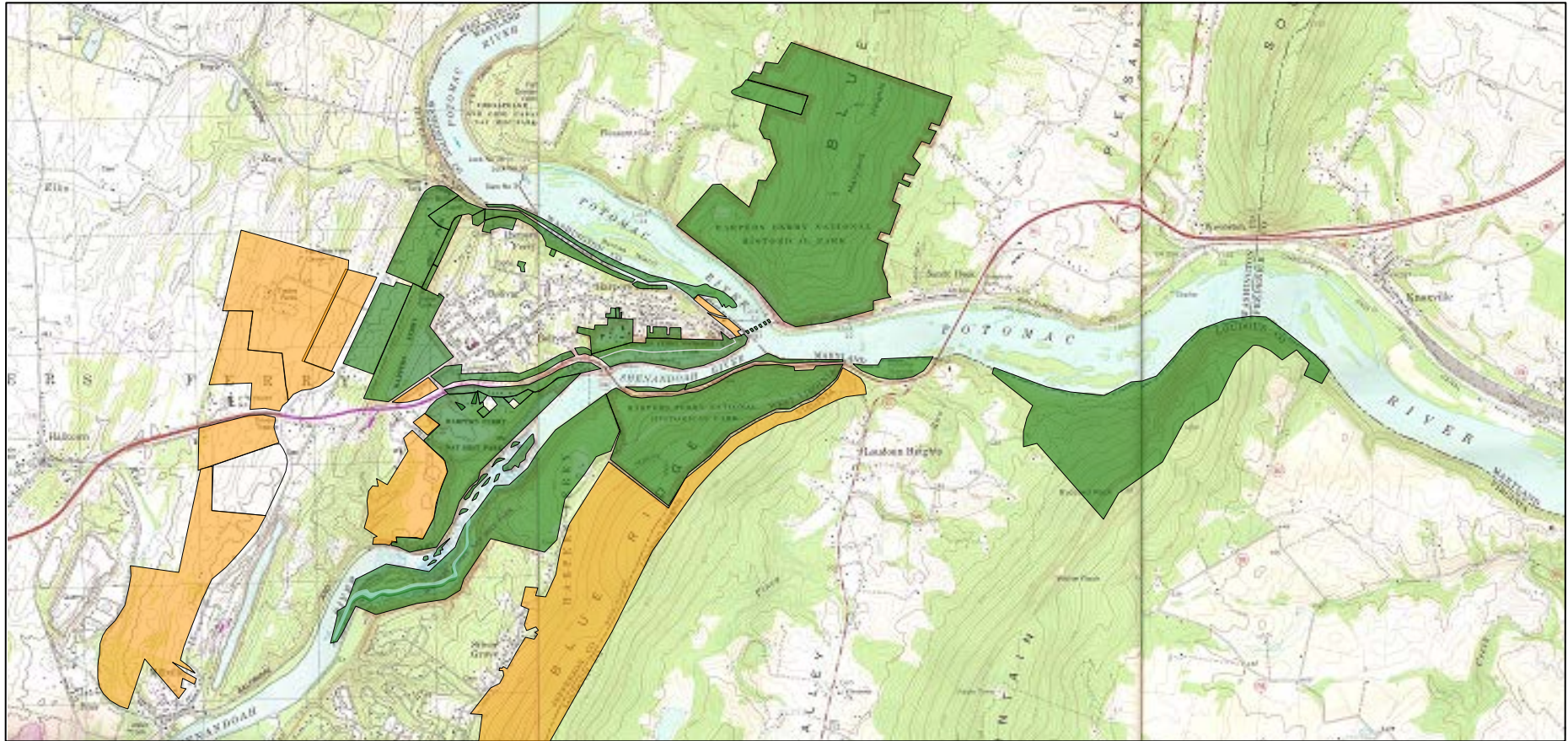
1999 Ford Conversion Van
Fleet 1, 18', 1 Chair & 6 Pax
Retired
7 year use
ADA Accessible Rear Lift
Gasoline



2004 Ford Industrial Van
Fleet 2, 20', 2 Chair & 12 Pax
Retired N/A
2 years use
ADA Accessible Side Lift
Bio-Diesel



1999 - 2007 Harpers Ferry NHP Added Properties 1,240 Acres (3,645.75)

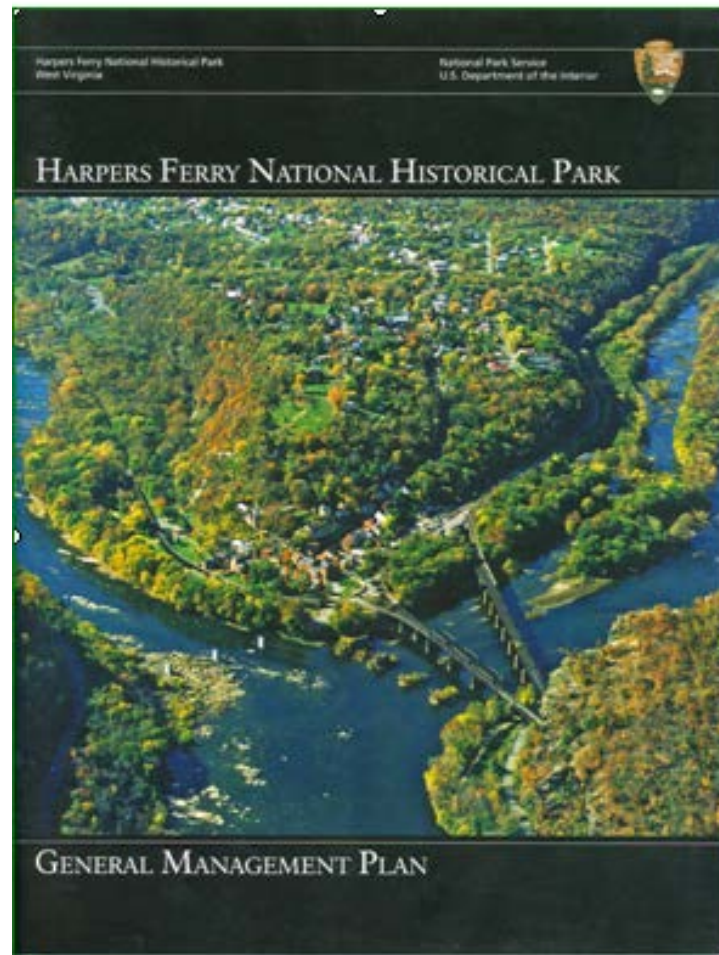


CWT-SHR-N, Armory Grounds-JB Fort Site-Train Station, Faulkner, Murphy Farm
Perry Orchard SHR-S, Ott Farm SHR-N, F&W SHR-S,
Ambrose Land, Drumheller Land,



Harpers Ferry National Historical Park

General Management Plan (GMP) Completed Dec 2010





Harpers Ferry National Historical Park



General Management Plan (GMP) Results

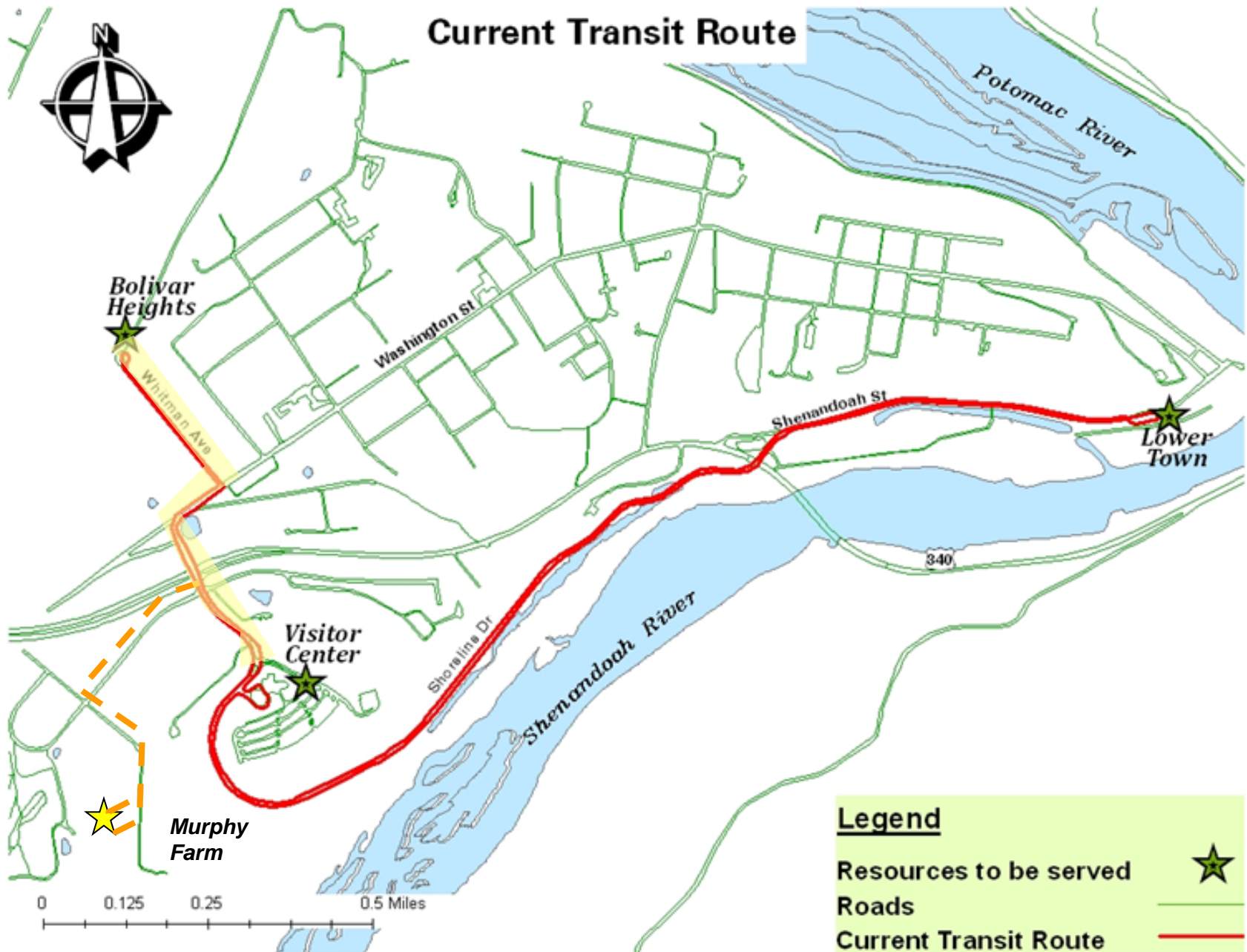
Findings:

- Current visitation exceeds transportation system
- Multiple themes presented
- Public demand call for opening up the civil war battle sites (visitor destination points)
- Desire to interface with local surfaces

Goals:

- Reduce carbon footprint
- Increase visitor satisfaction
- Increase sustainability

Current Transit Route



Bolivar Heights

Whitman Ave

Washington St

Shenandoah St

Lower Town

Visitor Center

Shoreline Dr

Shenandoah River

340

Potomac River

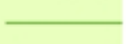
Murphy Farm

Legend

Resources to be served



Roads

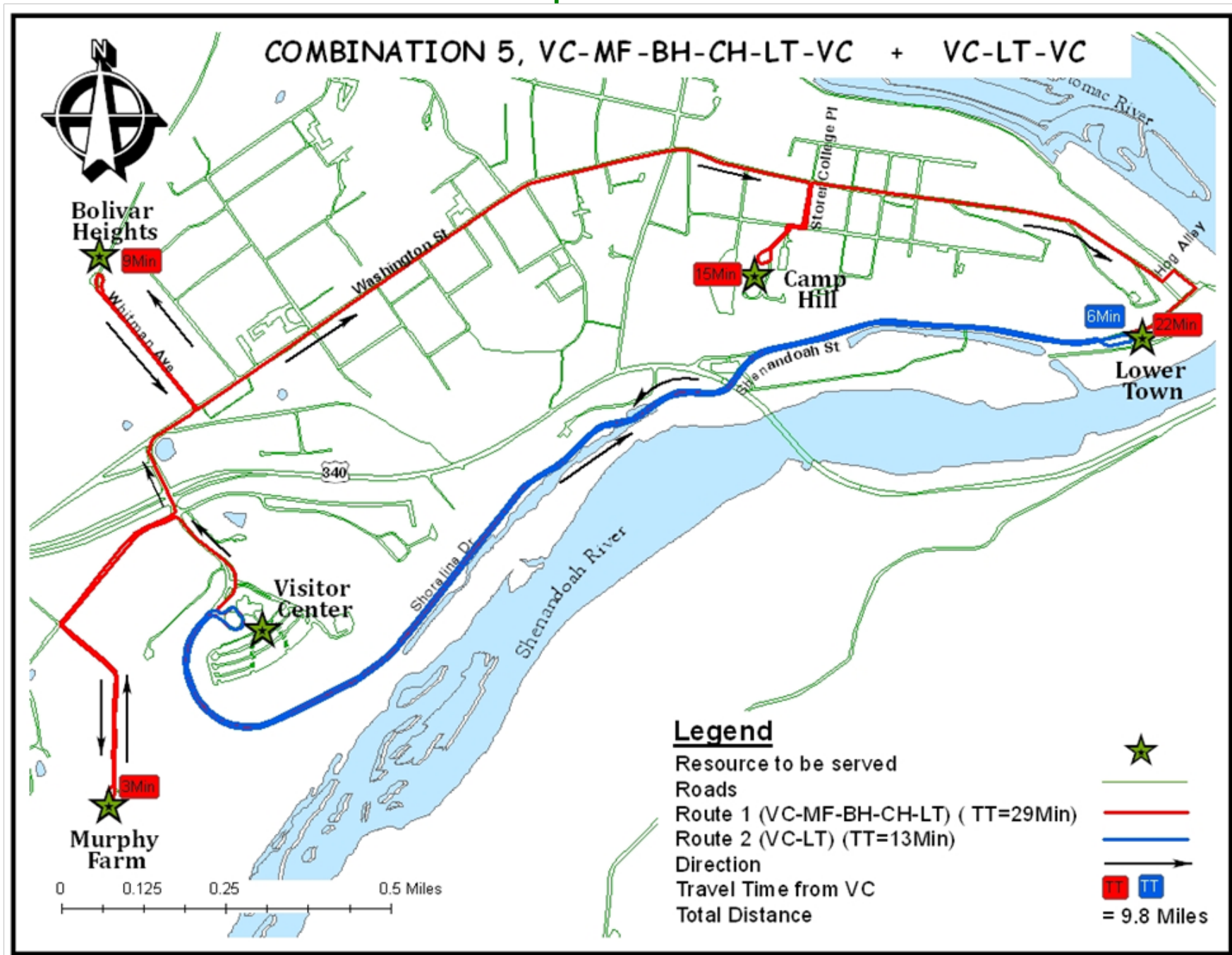


Current Transit Route

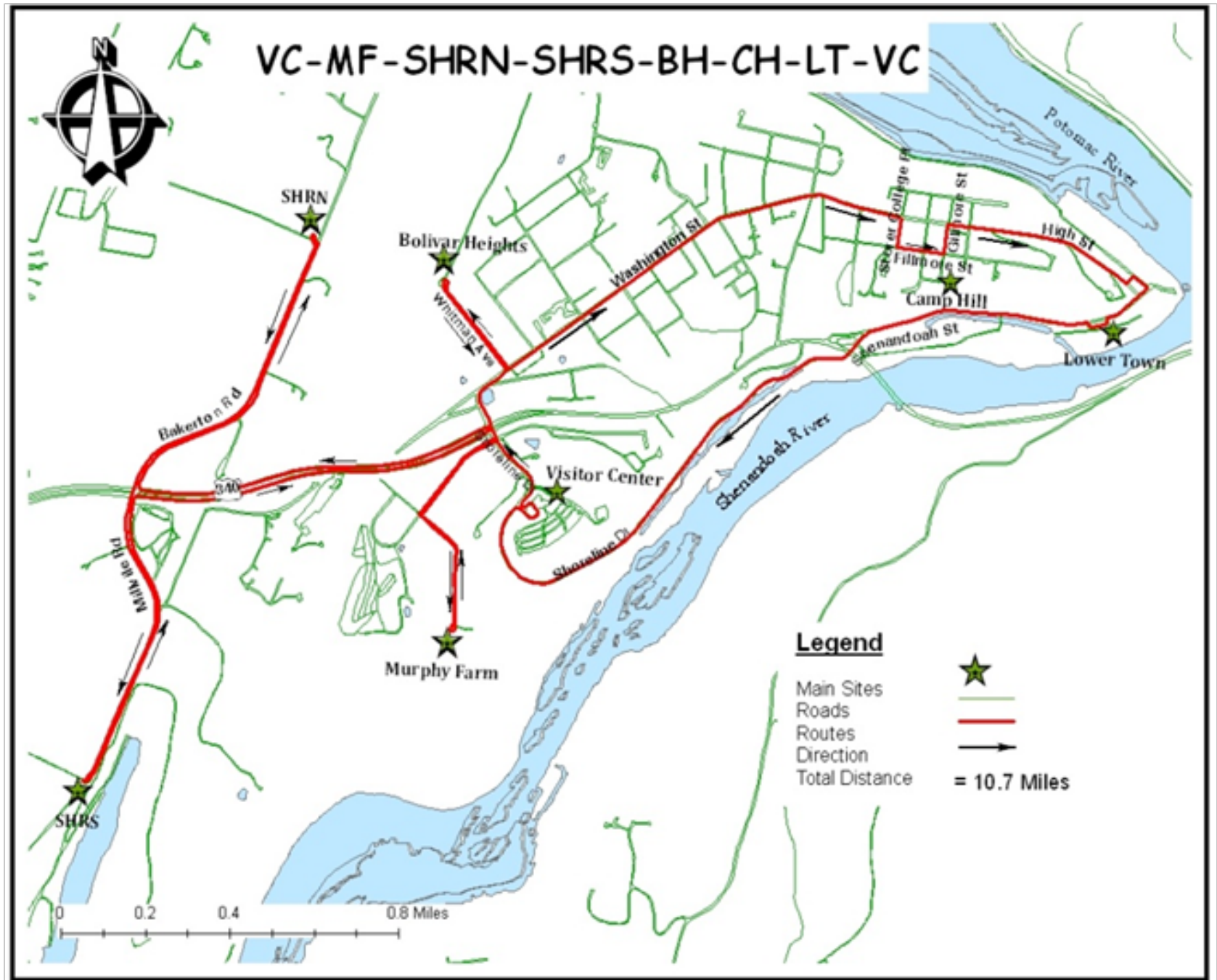


0 0.125 0.25 0.5 Miles

Short Term Transportation Route Growth



Long Term Transportation Route Growth

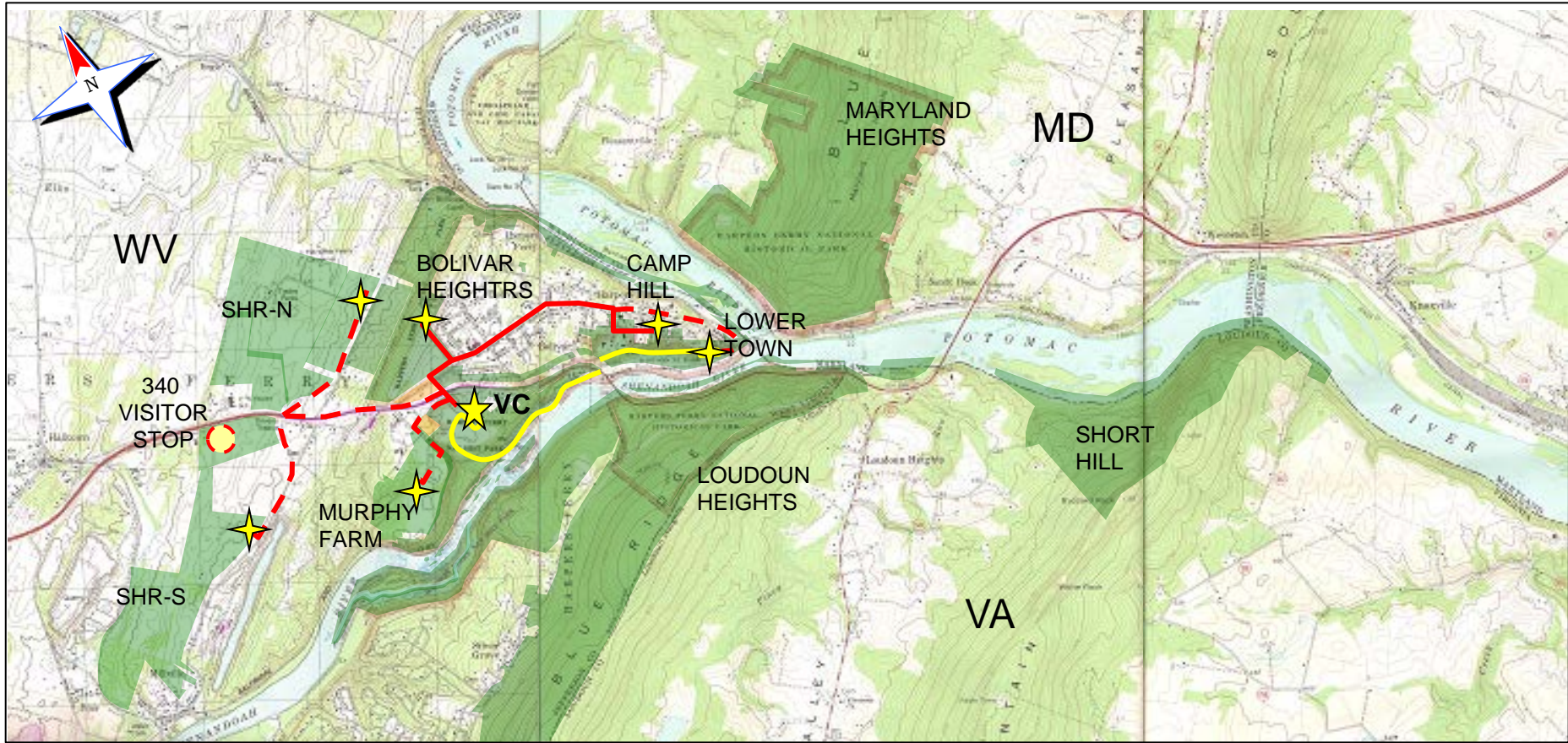




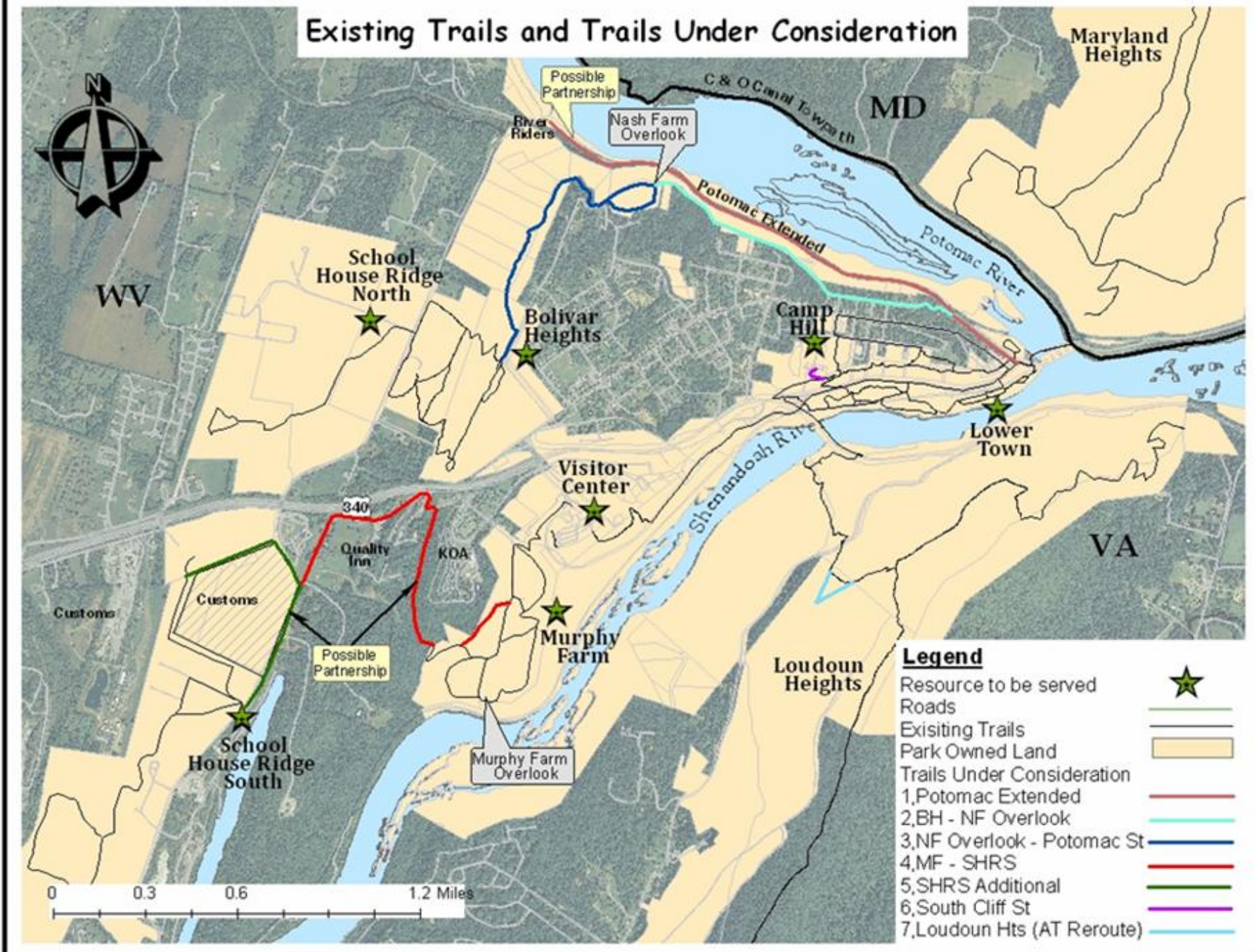
Harpers Ferry National Historical Park



HFNHP Future Bus Routes



Existing Trails and Trails Under Consideration



WV

MD

Maryland Heights

VA

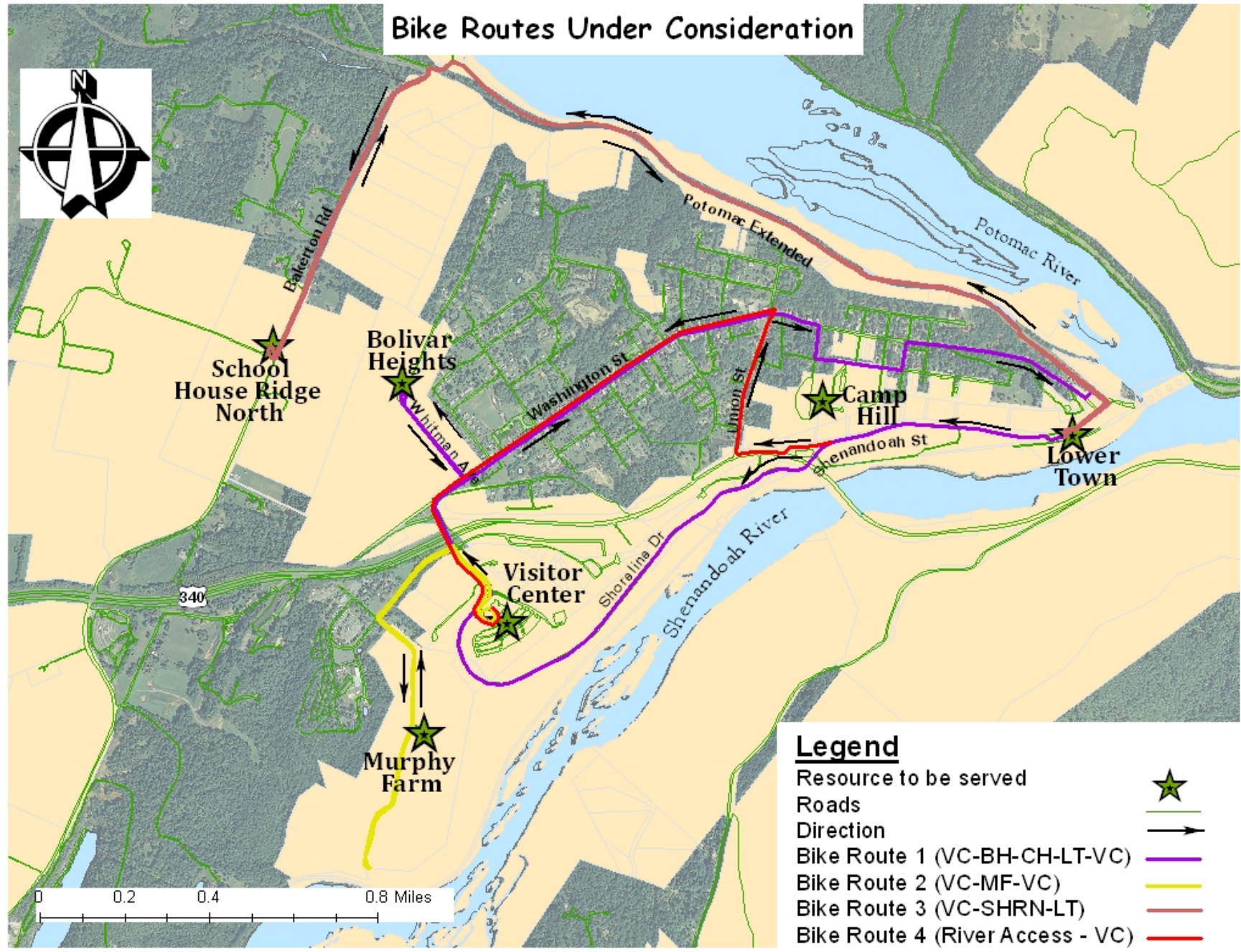
Loudoun Heights

Legend

- Resource to be served
- Roads
- Park Owned Land
- Trails Under Consideration
 - 1, Potomac Extended
 - 2, BH - NF Overlook
 - 3, NF Overlook - Potomac St
 - 4, MF - SHRS
 - 5, SHRS Additional
 - 6, South Cliff St
 - 7, Loudoun Hts (AT Reroute)

0 0.3 0.6 1.2 Miles

Bike Routes Under Consideration



Legend

- Resource to be served ★
- Roads —
- Direction →
- Bike Route 1 (VC-BH-CH-LT-VC) —
- Bike Route 2 (VC-MF-VC) —
- Bike Route 3 (VC-SHRN-LT) —
- Bike Route 4 (River Access - VC) —



Harpers Ferry National Historical Park



Short Term Trans Improvements Needed

Bus - Murphy Farm: Residential Lane too Narrow

Hiking - Add Cross Walks across Rt 340

Biking - Work w/ Eastern Pan Handle Trail Blazers &
RTCA, etc



Harpers Ferry National Historical Park



Long Term Trans Improvements Needed

PARTNERS NEEDED

-END-

QUESTIONS