

# Reimagining “Region” & the Role of Trails



# Great Allegheny Passage

- “Achievement of a lifetime” complete
  - Over \$40 million in annual direct spending
  - \$7.5 million in wages
  - 800,000 trips a year
- Now what?
- How can we further leverage trail tourism and recreation?

Photos: J. O'Brien



The GAP was just the beginning...

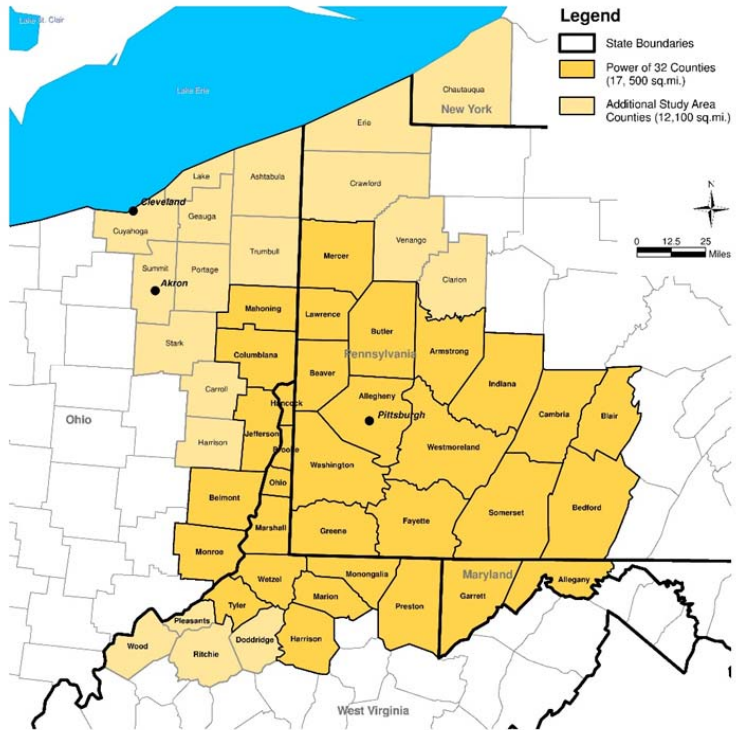
# Power of 32 Project



MOVING FROM VISION TO ACTION

- An unprecedented regional collaboration:
  - Western PA
  - Eastern Ohio
  - Western MD
  - Northern WV
- Economy, education, environment, government, people and community and transportation and infrastructure
- One of effort's 14 initiatives was to develop a regional trail network

# Power of 32+ Regional Trail Network



- Another regional collaboration based on the involvement of organizations/entities in Western PA, Eastern Ohio, Western MD, Northern WV and Western New York
- Growing out of regional initiatives such as the GAP, the Erie-to-Pittsburgh Trail, Ohio to Erie Trail and others
- P32+ trail meetings began in 2011
- Get more long-distance trails on the ground
- Connect them to each other
- Integrate trails into our communities

# Network Vision

By 2033, after completing and connecting a series of long-distance trails, our 46-county region will be positioned as the epicenter of multi-use trails in the Mid-Atlantic, Northeast, and Midwest.

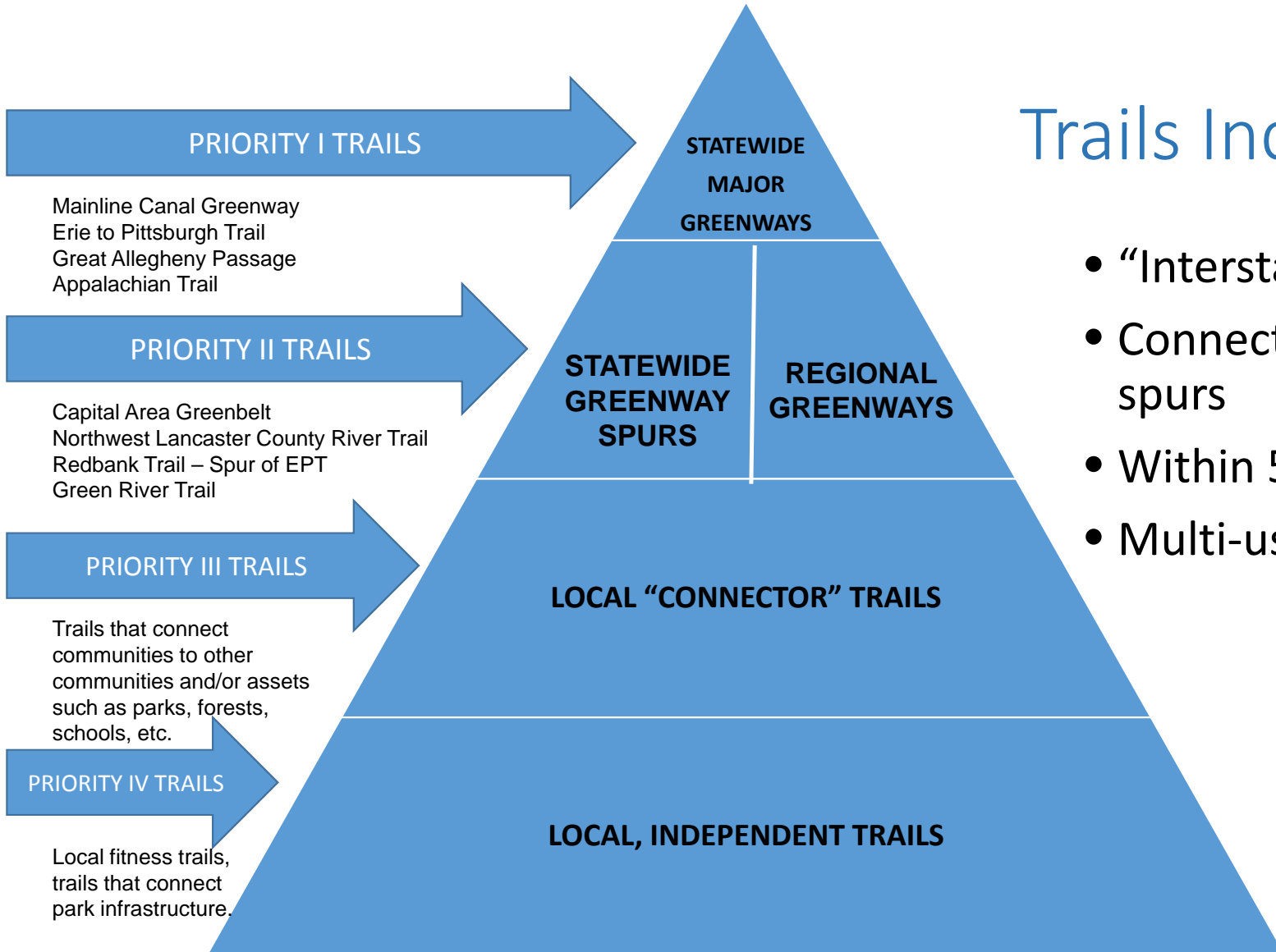
*With this network of trails at the center, it is feasible that at least 12 North American cities across seven states and Ontario will one day be connected by multi-use trails.*

# Trails Tell the Story of the Region...



Photos: Regional trail partners





## Trails Include:

- “Interstate level” trails
- Connecting trails and spurs
- Within 51 county area
- Multi-use trails



# Trails in Miles



- Over 1,200 miles of “interstate level” and connecting trails
- ~75% complete
- 3 of 13 trail systems 100% complete
- What’s left? The hardest parts
- Not included: Erie to Cleveland Seaway Trail corridor

# How They Connect

- Sheepskin Trail will connect the GAP to WV trails
- Montour Trail will connect the GAP to Pittsburgh International Airport
- GAP's terminus in Pittsburgh will connect to Erie to Pittsburgh Trail
- Panhandle Trail connects Montour Trail to Weirton, WV
- Ohio River Trail will connect to Great Ohio Lake-to-River Greenway
- Portage Trail will connect Lake to River to Ohio to Erie Trail  
(Cleveland to Cincinnati, 334 miles)

# Value of Collaborating

- Regional vision is compelling – easier for local trail builders to get trails on the ground
- Establish a regional brand and market the trails globally
- Advocate collectively on trail issues, raising the profile of trails
- Integrate economic development into trail building
- Identify missed opportunities
- Encourage best practices, elevate the “product”
- What else?

# Economic Development Tactics

- Working with trail builders to determine routes conducive to economic impact
  - What corridors promise economic potential?
- Working with trail builders on trail-to-town connections
- Implementing The Progress Fund's Trail Town Program along established routes



Photo: Amy Camp

# What Makes a “Trail Town?”

- Located on long distance trails
- Physical connection between trail and town
- Gateway moment
- Services catering to trail users
- Culture of hospitality

For a full list of attributes, contact  
The Progress Fund.

Photo: Amy Camp

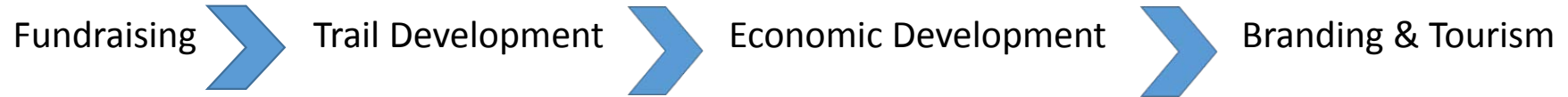


# Regional Network Components

- A loose collaborative that meets regularly
- Economic development overlay
- Regional brand complete with social / digital media (web, app)
- A GIS mapping tool
  - For planners, tourism professionals, trail builders, economic development community

# No Plan, No Progress

- The Circuit in Southeastern PA is a model of regional collaboration
- Understanding the gaps here will facilitate:



# Next Steps

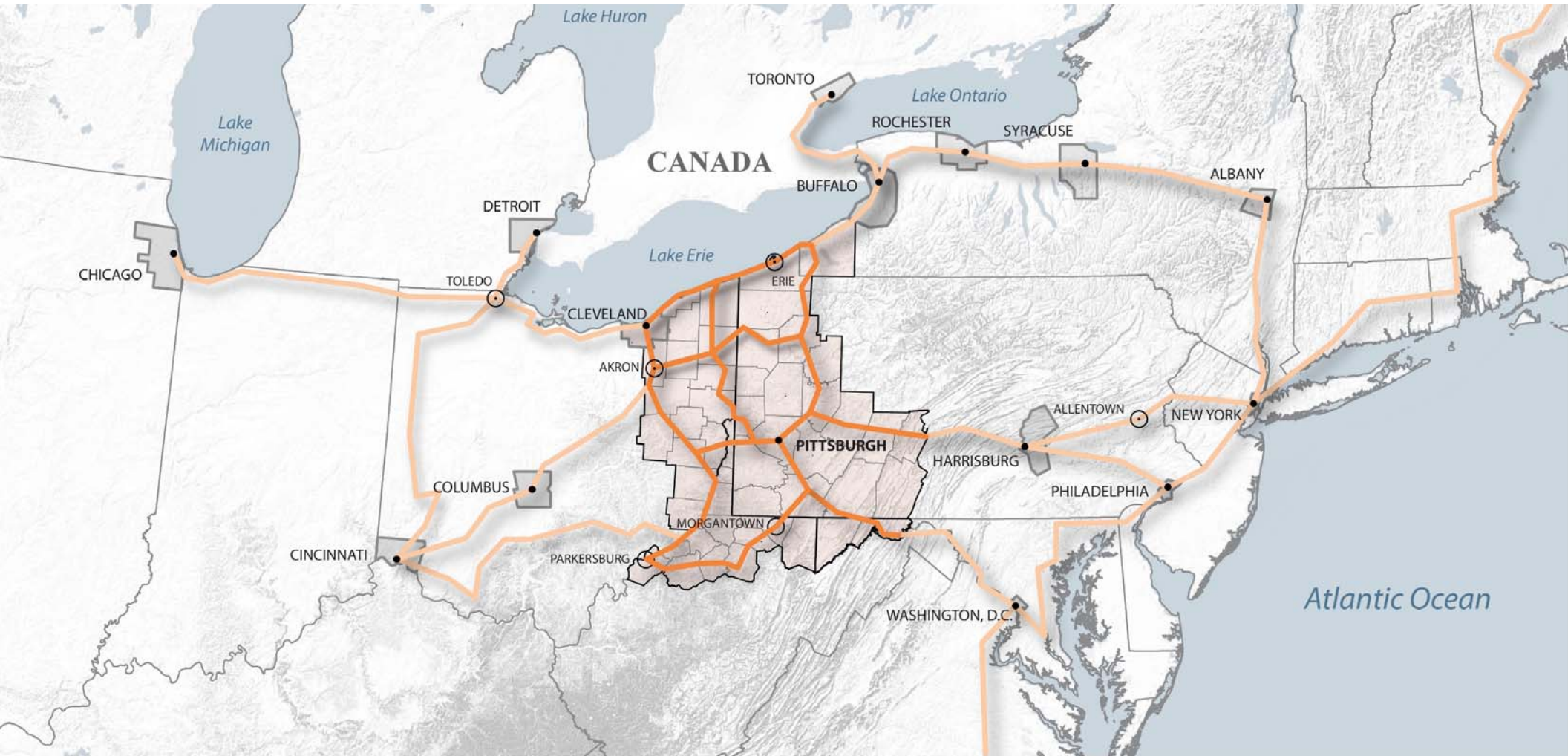
- Define the collaborative
- Compile and integrate existing trail and economic development data
- Identify and prioritize the gaps
- Establish an implementation strategy
- Develop an economic development-centric technical assistance program



# Regional Trail Network Vision



# Possible Inter-Regional Trail Connections



# ESRI On-line GIS Applications

## ArcGIS.com Map Viewer

Explore the map-making tool for ArcGIS Online! Maps from world level down to neighborhood can be saved and shared via ArcGIS Online, ArcGIS Desktop for more capacity, or embedded in websites. This is a Javascript-based viewer, so it works in any browsers including mobile devices. No plug-ins needed.



# Simple and Customizable

- Allows access to a collection of maps, demographic datasets and images.
- The data is hosted in ESRI's secure cloud server and all ownership/rights are maintained by the data creators.
- Add data, create “mash-ups” with to share with other users. Add photos or links to web pages to highlight information. User groups can be created to publicly share maps and data.



# P32+ Regional Trail GIS Database

HOME ▾ My Map

NEW MAP

John ▾

Details

Add ▾

Basemap

Save ▾

Share

Print

Directions

Measure

Bookmarks

Find address or place



About

Content

Legend

## Make your own map

It's easy to make your own map. Just follow these steps:

### 1. Choose an area.

Pan and zoom the map to an area or search by its name or address.

### 2. Decide what to show.

Choose a Basemap then Add layers on top of it.

### 3. Add more to your map.

Add map notes to draw features on the map.

Display descriptive text, images, and charts for map features in a pop-up.

### 4. Save and share your map.

Give your map a name and description then share it with other people.



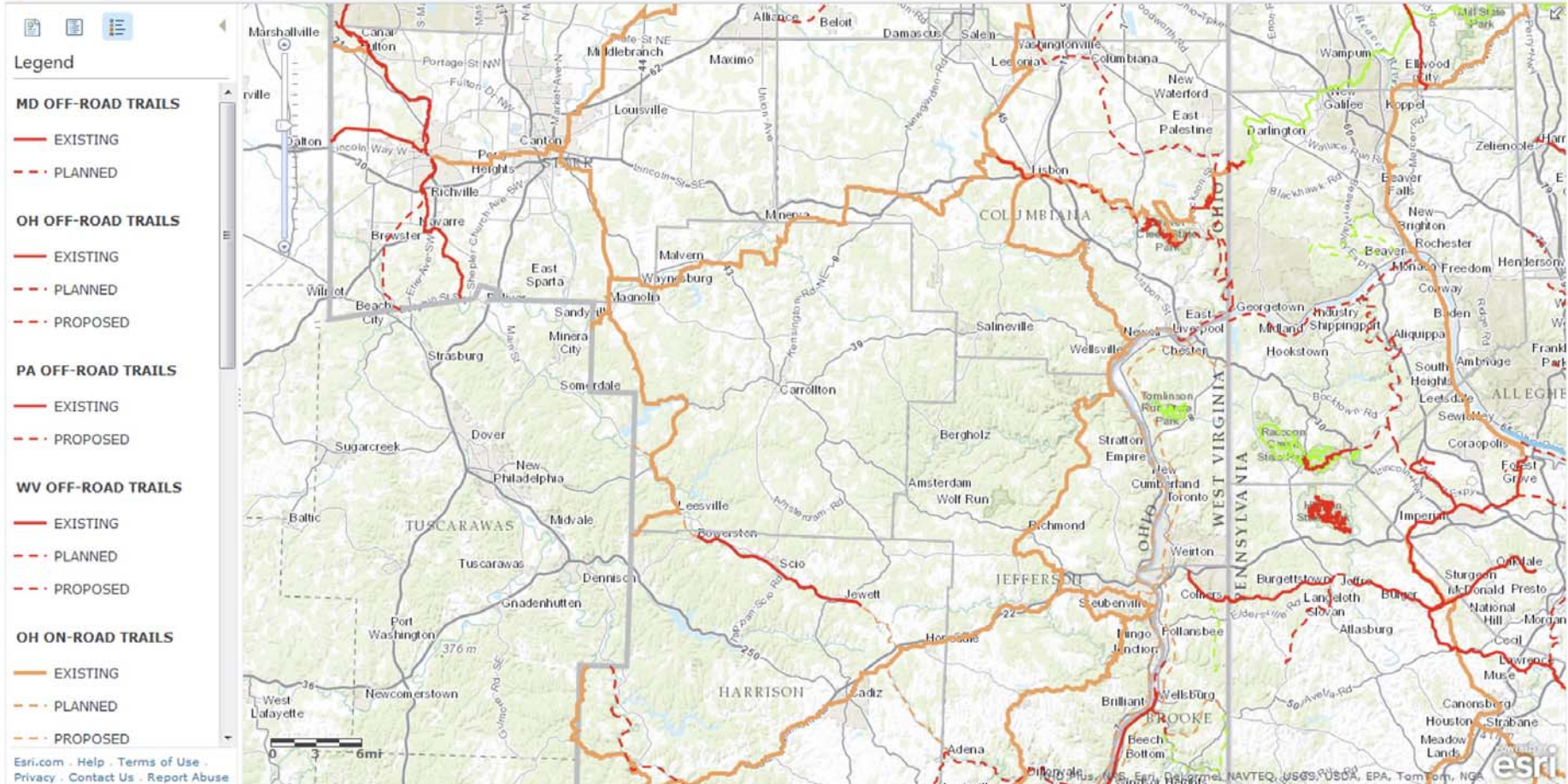
# Panhandle Trail Assessment

HOME ▾ Regional Trails Project Map v3

NEW MAP John ▾

Details Add ▾ Basemap

Save ▾ Share Print | Directions Measure Bookmarks Find address or place 🔍



# Panhandle Trail Assessment continued

HOME ▾ Regional Trails Project Map v3

NEW MAP

John ▾

Details Add ▾ Edit Basemap

Save ▾ Share Print Directions Measure Bookmarks

Find address or place

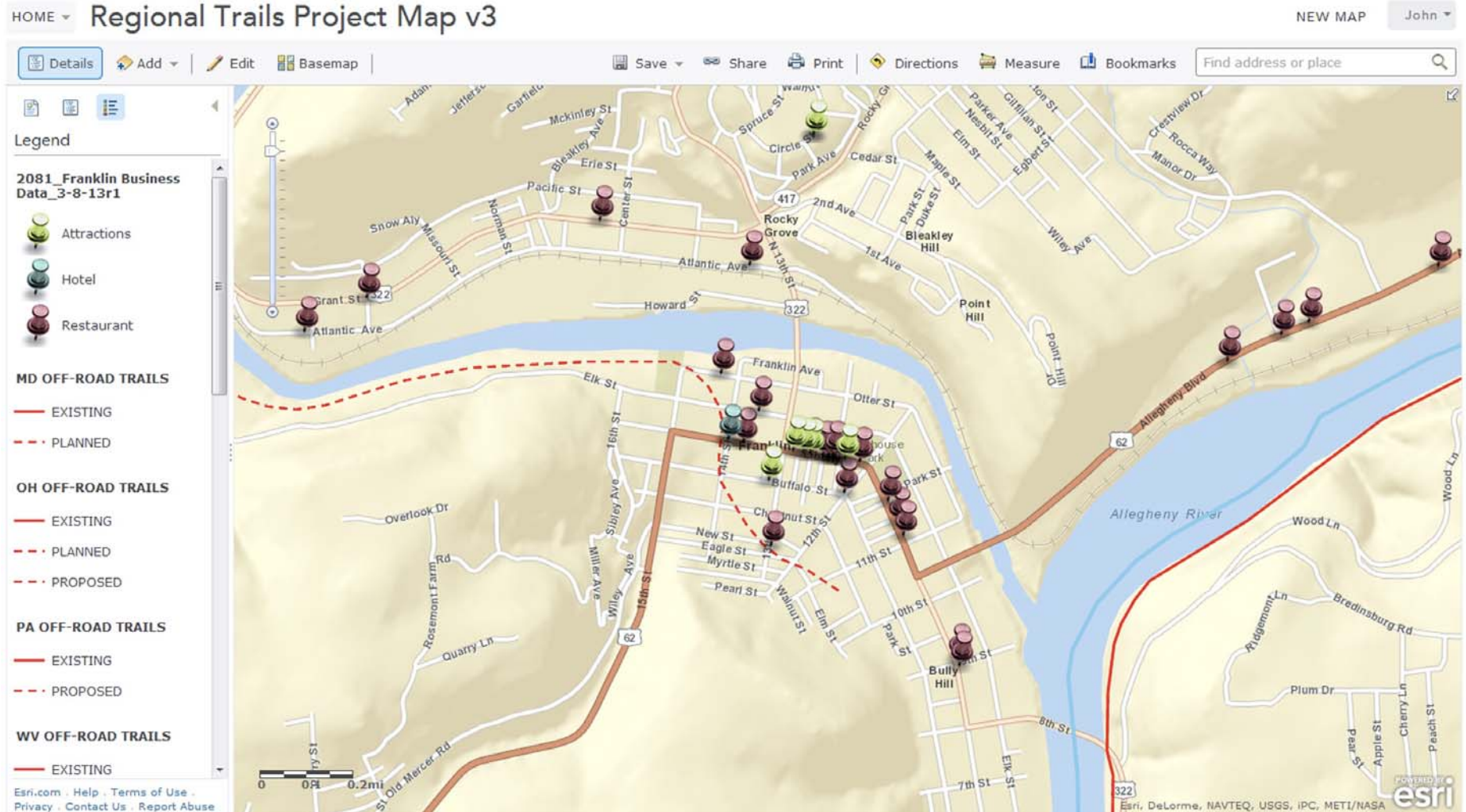
About Content Legend

Contents

- MAP DEMO NOTES ▾
- 2081 Franklin Business Data 3-8-13r1
- MD OFF-ROAD TRAILS ▾
- OH OFF-ROAD TRAILS ▾
- PA OFF-ROAD TRAILS ▾
- WV OFF-ROAD TRAILS ▾
- OH ON-ROAD TRAILS ▾
- PA ON-ROAD TRAILS ▾
- WV ON-ROAD TRAILS ▾
- PA SINGLE TRACK TRAILS ▾
- WV SINGLE TRAILS ▾
- WATER TRAILS ▾
- P32 STUDY AREA ▾
- P32 STATESr1 ▾
- P32 COUNTIES ▾
- P32 MDMCD ▾
- P32 PAMCD ▾
- P32 WVMCD ▾
- P32 OHMCD ▾
- P32 MDACTRRr1 ▾
- P32 OHACTRRr1 ▾



# Franklin Business Districts Analysis





**THE NETWORK**  
**POWER OF 32 REGIONAL TRAIL SYSTEM**  
**2013 REGIONAL TRAIL STAKEHOLDERS MEETING**



Lake Erie

**The Network**

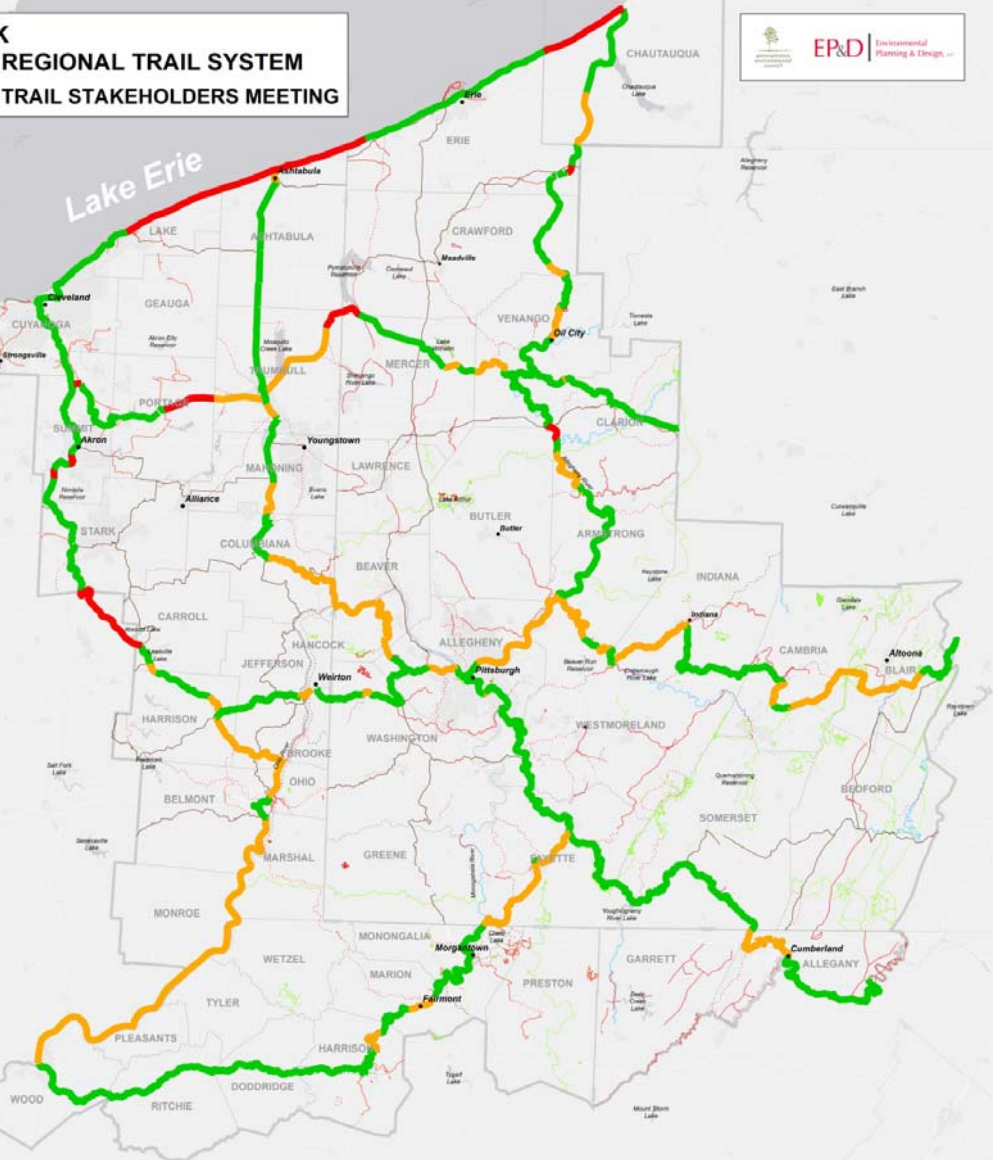
- Existing Trails
- Planned or Proposed Trails
- Missing Gaps

**LEGEND**

- Study Area Boundary
- State Boundary
- County Boundary
- Major City

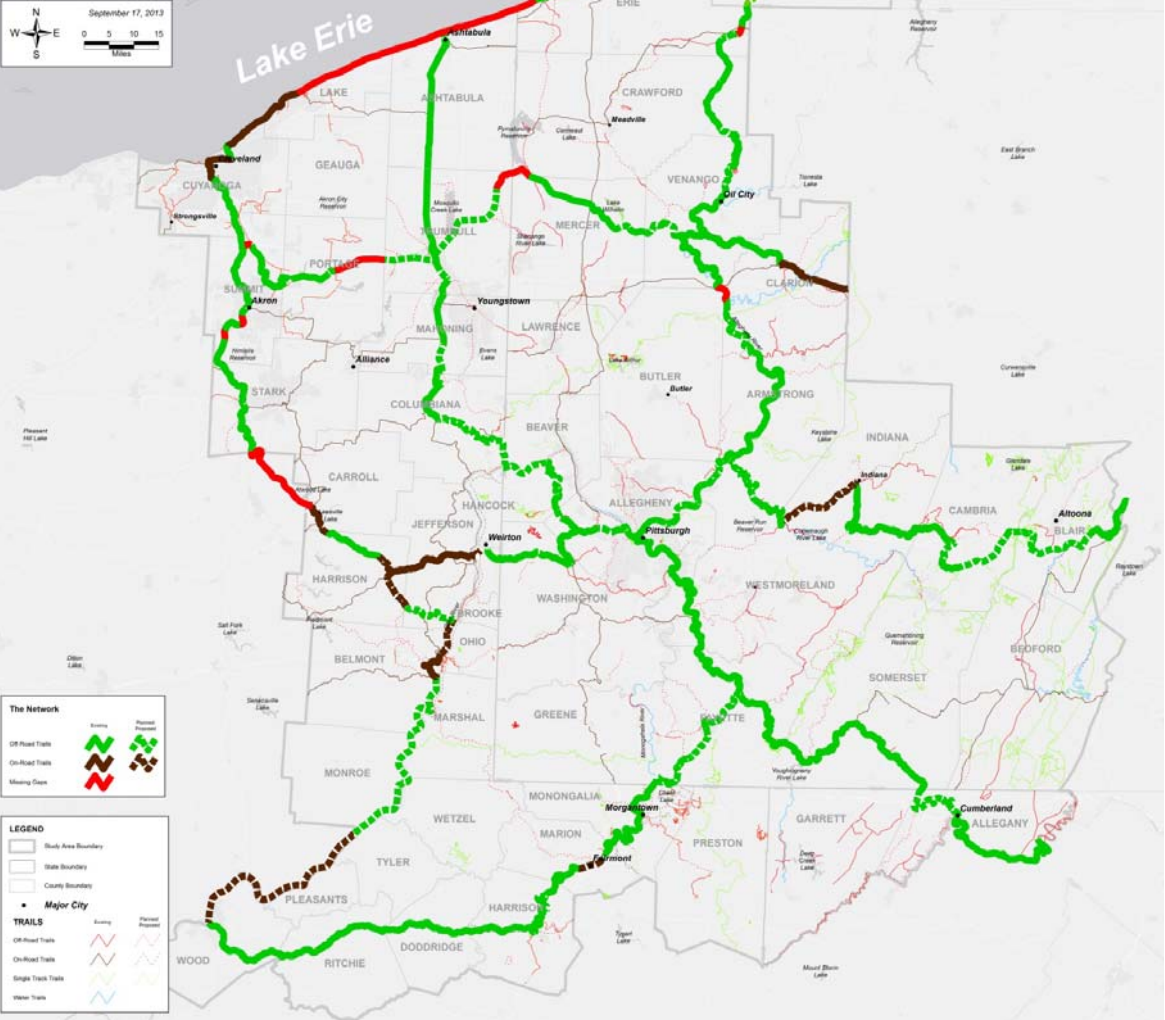
**TRAILS**

- Off-Highway Trails
- On-Road Trails
- Single Track Trails
- Water Trails



Regional Trail Network with Completion Status Indicated

**THE NETWORK**  
**POWER OF 32 REGIONAL TRAIL SYSTEM**  
**2013 REGIONAL TRAIL STAKEHOLDERS MEETING**



**The Network**

- Off-Road Trails: Solid green line
- On-Road Trails: Dashed green line
- Single Track Trails: Solid red line
- Water Trails: Blue line

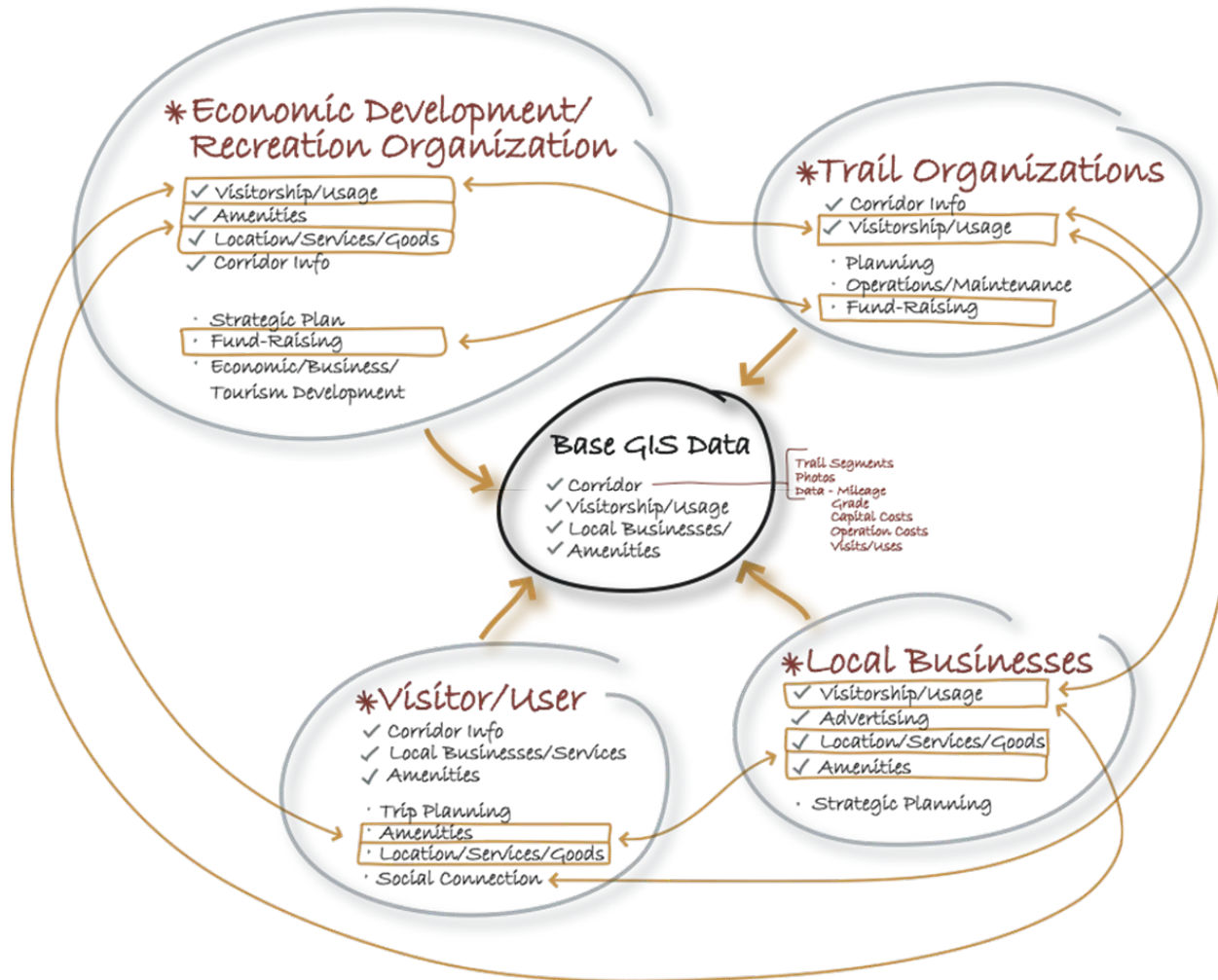
**LEGEND**

- State Area Boundary: Thick grey line
- State Boundary: Thin grey line
- County Boundary: Dotted grey line
- Major City: Black dot

**TRAILS**

- Off-Road Trails: Solid green line
- On-Road Trails: Dashed green line
- Single Track Trails: Solid red line
- Water Trails: Blue line

Regional Trail Network with Trail Type Indicated



Leveraging the GIS Data – More Than a “Map Maker”

# Data Engine For Mobile Apps

Trail  
Navigation



Travel  
Journal



Route  
Planner



Trail  
Service  
Locator



Trail  
Maintenance  
Log





