



# *Safety Management System*

Marsha K. Mays, P.E.

Chris Kinsey, P.E.

Planning Conference

October 8, 2014



# What is ERP?

- Enterprise Resource Planning System
- Also Known as



- Basically the Modernization and Integration of the ALL of the State's Computer Systems, including:
  - Financial Systems
  - Procurement System
  - Human Resources
  - Payroll
  - Transportation Management System

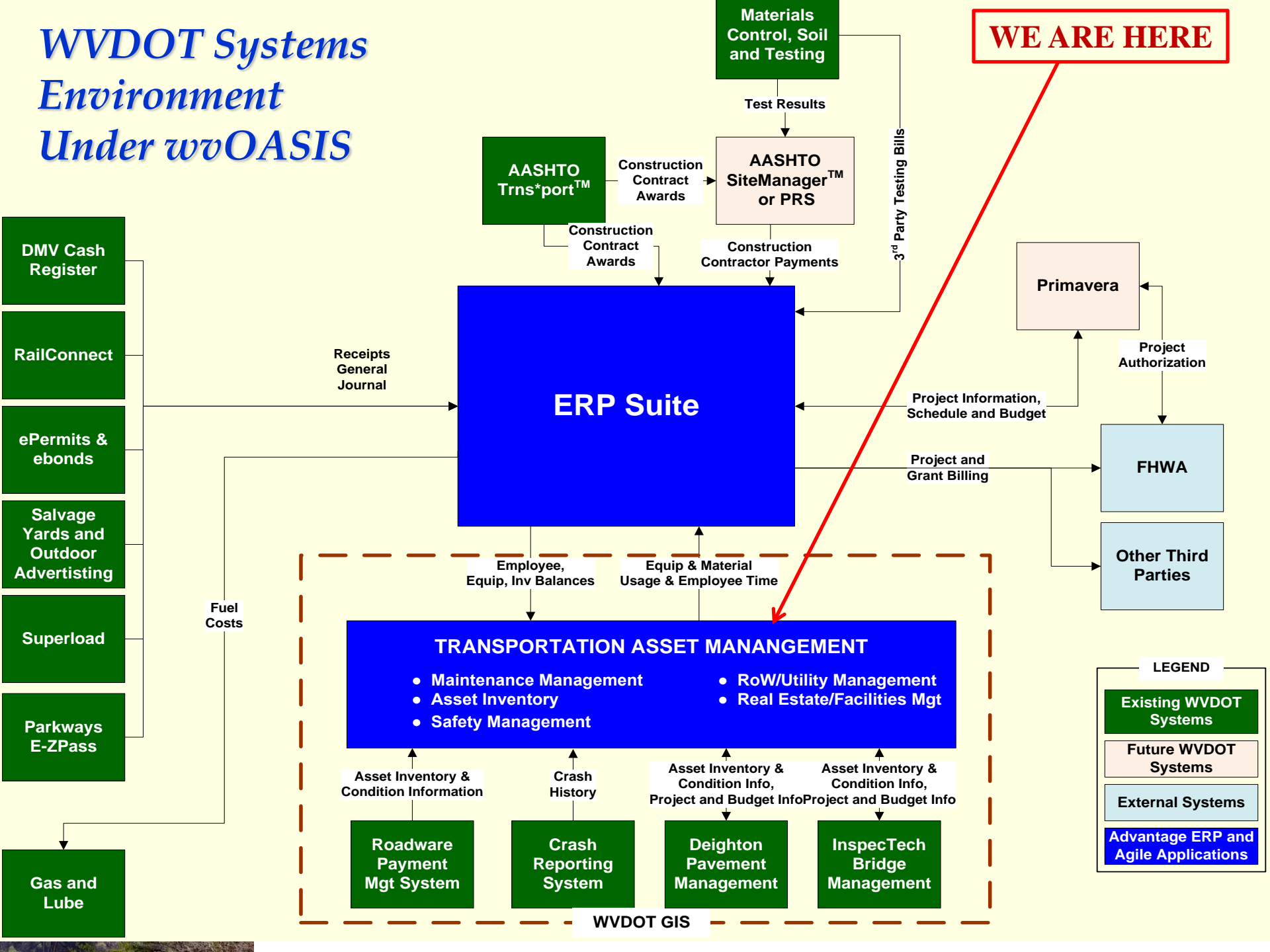


# Phased Implementation

wvOASIS Deployment Phasing for WVVDOT



# WVDOT Systems Environment Under wvOASIS



**WE ARE HERE**

Materials Control, Soil and Testing

AASHTO Trns\*port™

AASHTO SiteManager™ or PRS

DMV Cash Register

RailConnect

ePermits & ebonds

Salvage Yards and Outdoor Advertising

Superload

Parkways E-ZPass

Gas and Lube

Receipts General Journal

**ERP Suite**

3rd Party Testing Bills

Primavera

Project Authorization

Project Information, Schedule and Budget

FHWA

Project and Grant Billing

Other Third Parties

Employee, Equip, Inv Balances

Equip & Material Usage & Employee Time

Fuel Costs

**TRANSPORTATION ASSET MANAGEMENT**

- Maintenance Management
- Asset Inventory
- Safety Management
- RoW/Utility Management
- Real Estate/Facilities Mgt

Asset Inventory & Condition Information

Crash History

Asset Inventory & Condition Info, Project and Budget Info

Asset Inventory & Condition Info, Project and Budget Info

Roadware Payment Mgt System

Crash Reporting System

Deighton Pavement Management

InspecTech Bridge Management

WVDOT GIS

**LEGEND**

- Existing WVDOT Systems
- Future WVDOT Systems
- External Systems
- Advantage ERP and Agile Applications



# *Transportation Suite*

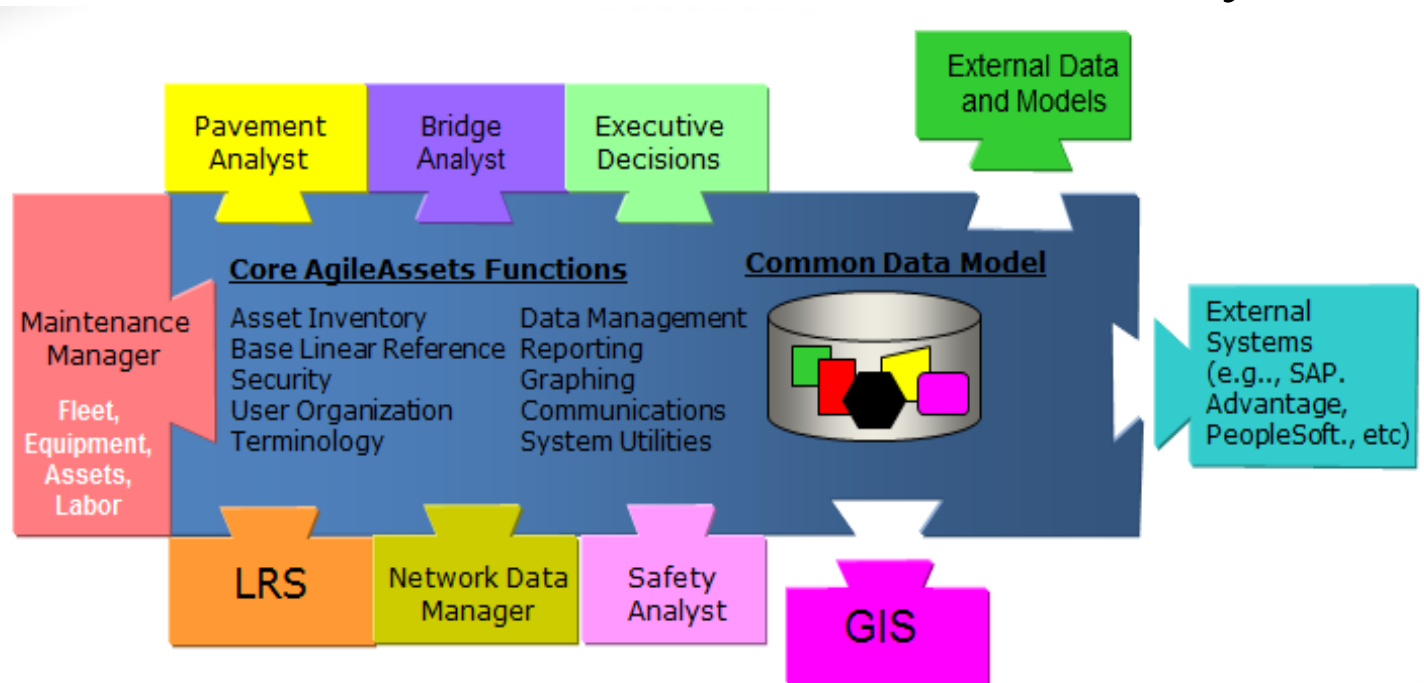
---

- Being Developed by AgileAssets
- Includes Systems for:
  - Safety Management
  - Transportation Asset Inventory
  - Right of Way / Utility Management
  - Transportation Operations Management
  - Real Estate / Facilities Management
  - Fleet



# AgileAssets® Asset Management Suite

- Comprehensive Transportation Asset Management System
- Modular Framework
- Centered around Core Functionality





# *What is a Safety Management System?*

---

A Comprehensive Means of Managing  
Safety – in Our Case...

*Highway Safety*



# *Why do we need a Safety Management System?*

---

- Each Year, on the State's Public Streets & Highways:
  - More than **330** People Die
  - More than **14,000** Additional People Receive Injuries
    - **1,400** of those Injuries are Incapacitating





# *Why do we need a Safety Management System?*

---

- SAFETEA-LU
  - Made Safety a Core Program
  - Doubled Highway Safety Funding
  - Required the Development of a Strategic Highway Safety Plan
- MAP-21
  - Continued Safety as a Core Program
  - Doubled Highway Safety Funding
  - Streamlined the Highway Safety Improvement Program Process
  - Added Performance Measures & Targets
  - Requires Additional Coordination of Highway Safety Related Plans/Programs



# Goals for West Virginia's Safety Management System

---

- Ability to Conduct More Comprehensive Safety Analysis than Ever Before
  - Bigger Bang for our Buck
  - Better Analysis of Safety Improvement Effectiveness
- Ability to Conduct Analysis per Highway Safety Manual Recommendations / Guidelines
- Easily Tie “Safety” Data Together with Data from other wvOASIS Modules
  - Transportation Asset Inventory
  - Transportation Operations Management
  - Capital Project Management System (CPMS)



# *Agile Assets' Safety Management System*

---

- First State Deployment
- Features:
  - Asset Performance Management
    - Safety Related Database(s)
  - Planning Processes
    - Network Analysis
    - Benefit / Cost Analysis
    - Project Analysis / Evaluation
    - Grants Management



# *Phased Implementation – Phase B*

*Live as of January 21, 2014*

---

- Safety Related Databases:
  - Crash Records
  - Citations
  - Horizontal & Vertical Curve Data



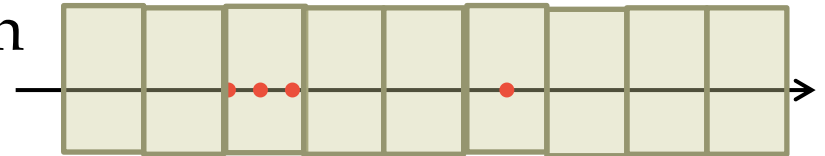
# *Phased Implementation – Phase B*

*Live as of January 21, 2014*

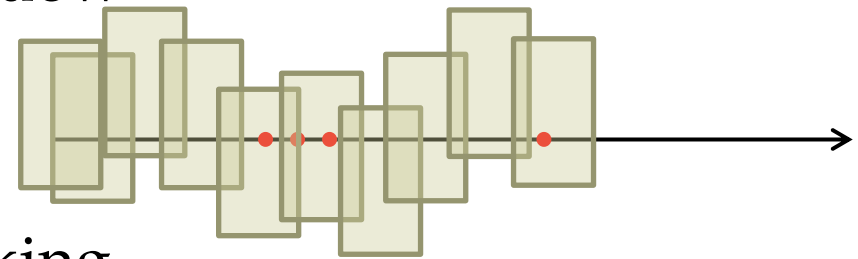
## ○ Planning Processes:

### ○ Network Analysis

#### ○ Peak Search



#### ○ Sliding Window



#### ○ Simple Ranking

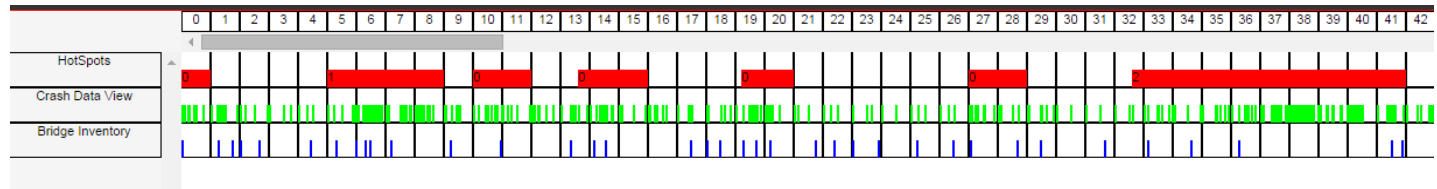


# *Phased Implementation – Phase B*

*Live as of January 21, 2014*

## ○ Planning Processes:

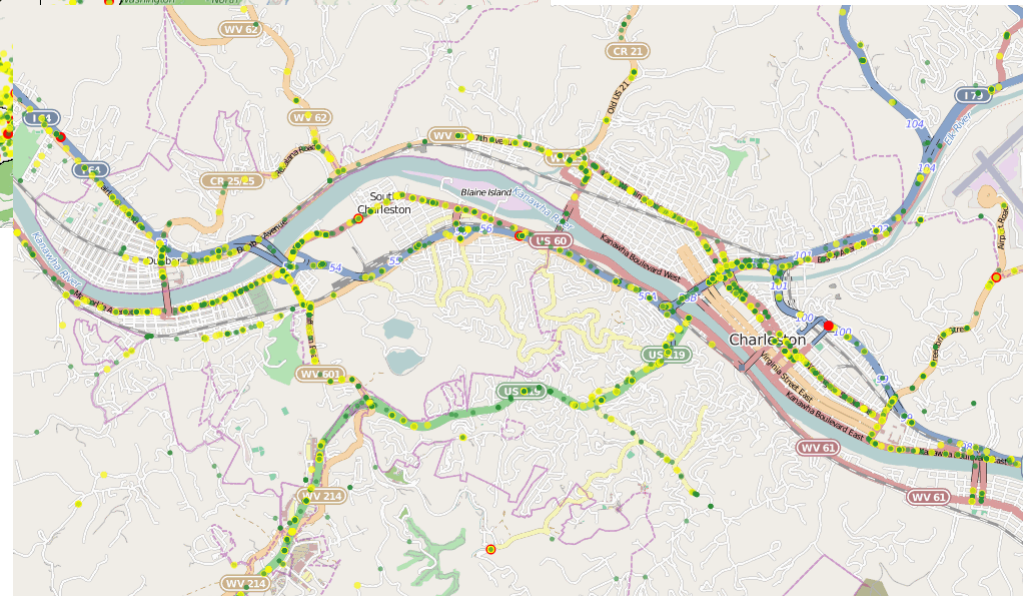
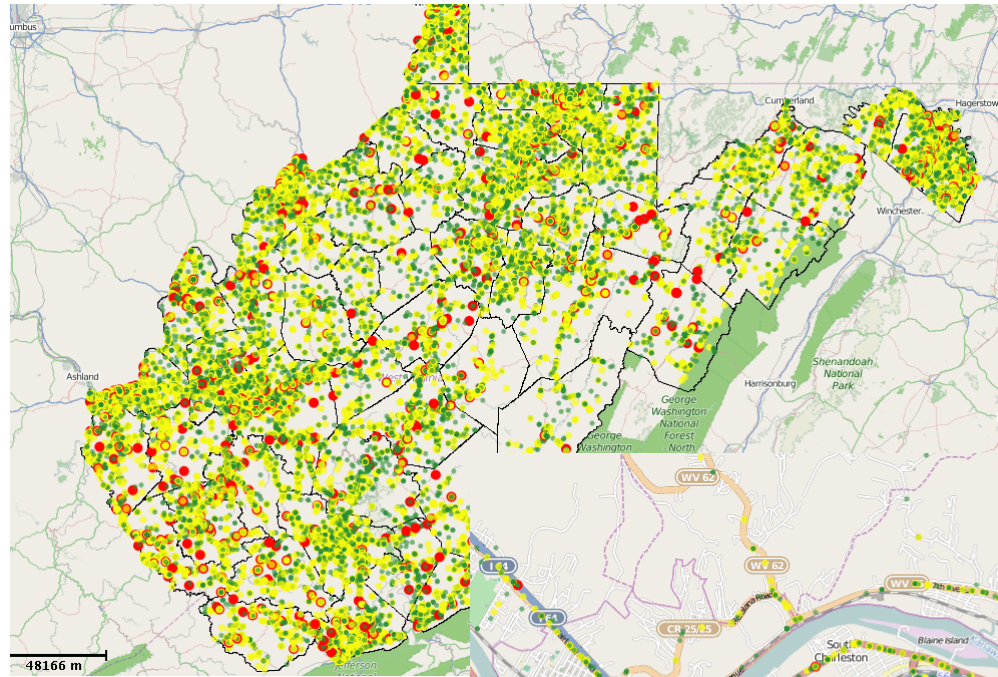
- Benefit / Cost Analysis
  - Links to the National Crash Modification Factor Clearinghouse
- Project Analysis / Evaluation
  - Profile Viewer



- Heat Maps
- Before & After Snapshots



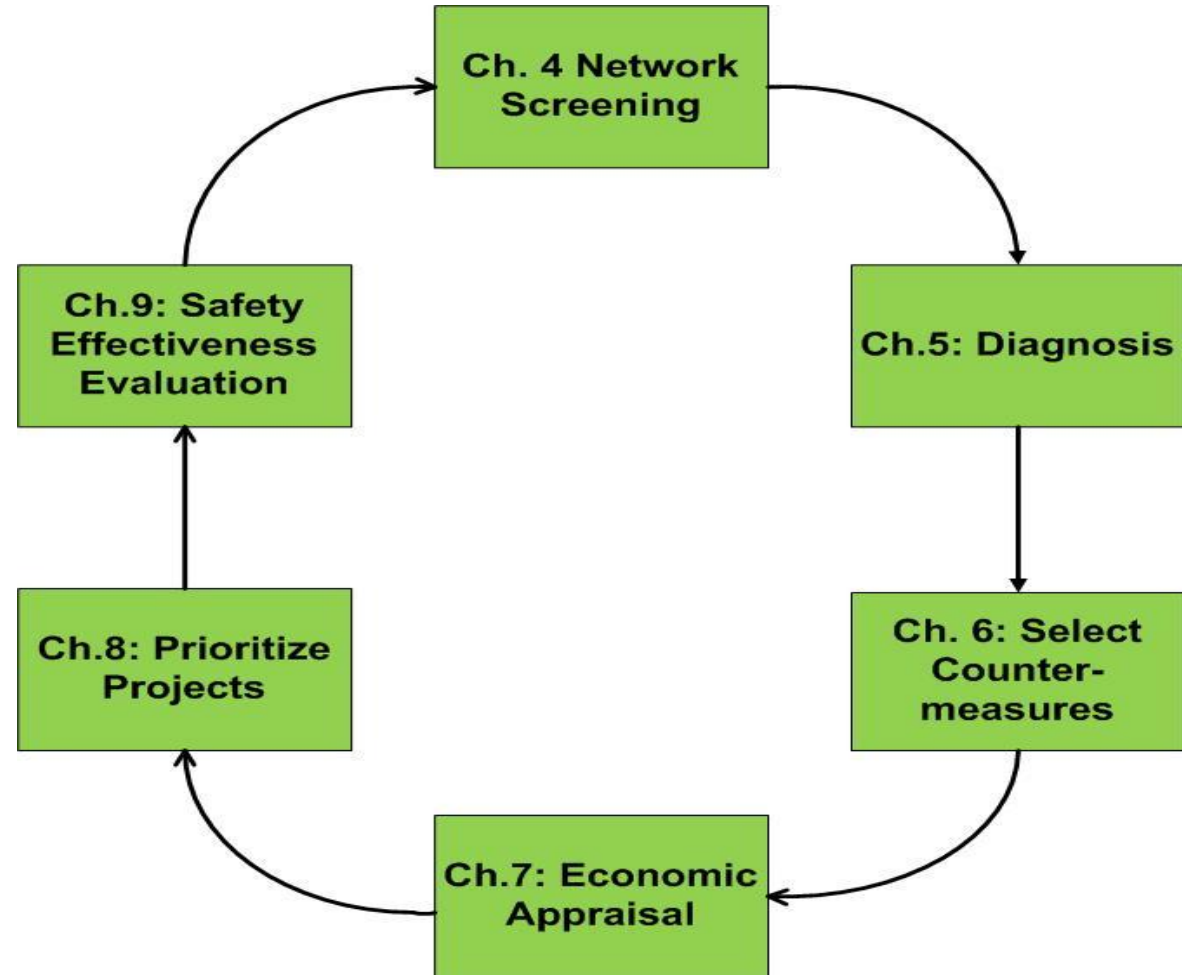
# Heat Maps





# *Safety Analyst Module:* *100% Configurable to the Volume 1 of the* *Highway Safety Manual*

---







# *Phased Implementation – Phase B*

*Live as of January 21, 2014*

---

- Integration with Additional Phase B Functionality
  - Linear Referencing System
  - GIS Mapping Components
  - Transportation Asset Inventory
    - Roadway Inventory
    - Barrier
    - Pavement Markings
    - Signs
    - Ditches



# *Phased Implementation – Phase E*

*Go-Live Scheduled for July of 2015*

---

- Safety Related Databases:
  - EMS Run Data
  - State Trauma Registry Data
  - DMV Driver Database
    - Licenses
    - Convictions
  - DMV Vehicle Registration Database



# *Phased Implementation – Phase E*

*Go-Live Scheduled for July of 2015*

---

- Cradle to Grave Project Management Processes with Phases for:
  - Proposed
  - Recommended
  - Scheduled
  - Authorized
  - Completed
- Ability to handle
  - Infrastructure Projects
  - Non-Infrastructure Projects



# *Phased Implementation – Phase E*

## *Go-Live Scheduled for July of 2015*

---

### ○ Planning Processes:

- Integration with CPMS
  - Direct Submission of Projects from SMS – “Recommended” Status
  - Receipt of Project Data/Status Updates
    - Scheduling
    - Funding
    - Obligation
- Additional Project Analysis / Evaluation



# *Phased Implementation – Phase E*

*Go-Live Scheduled for July of 2015*

---

## ○ Planning Processes:

### ○ Grant Management Functionality

#### ○ Used by:

- Governor's Highway Safety

- Commission on Drunk Driving Prevention

#### ○ Allows Electronic Grant:

- Application

- Evaluation

- Awarding

- Expenditure & Outcome Analysis



# *Phased Implementation – Phase E*

## *Go-Live Scheduled for July of 2015*

---

- Integration with Additional Phase E Functionality
  - Transportation Asset Inventory
    - 79 Assets in Addition to Phase B, including:
      - Highway Railroad Grade Crossings
      - Construction Projects & History
      - Signals
      - Lighting
      - ITS
      - Full Implementation of All MIRE Data Elements
      - Additional Roadside Features