

# Imagine Charleston Comprehensive Plan

City of Charleston, West Virginia



# Branding and Marketing



# Citizen Engagement

- Executive Committee
- 90 member advisory committee
- One on One interviews
- Stakeholder interviews
- Focus group sessions
- Neighborhood meetings
- Public meetings – UC, Cultural Center, and Emanuel Baptists Church

*Reached out to over 500 individuals*



# National Trend

When choosing a place to live

- People used to move where jobs were
- Now people move to where they can get the best quality of life, and then look for a job



# Place Matters

People want, especially millennials

- Healthy living
- Richness in culture and history
- Diversity
- Mixed use neighborhoods
- Variety of transportation options
- Safe walkable streets
- Art and entertainment



# Imagine Charleston's Vision

**Charleston is the recreational, cultural, and business capital of the Appalachian Mountains.**



# Neighborhoods and Land Use

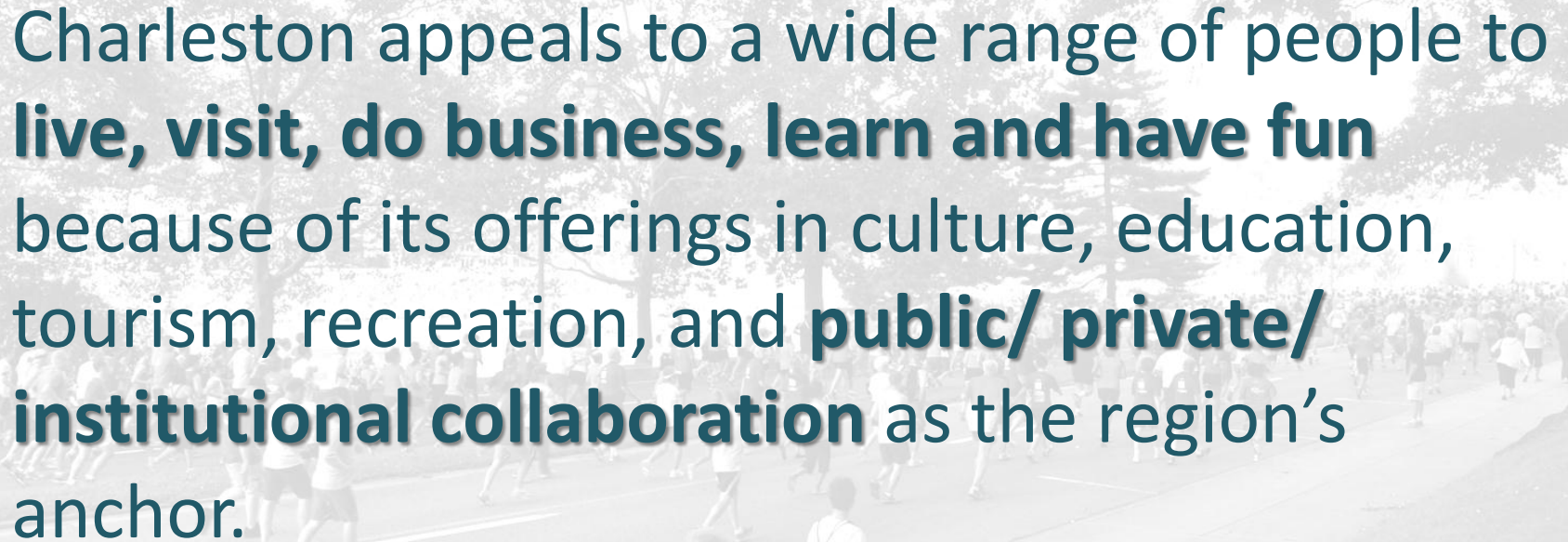
Provide **safe, walkable, vibrant neighborhoods** with **distinct identities**, and **strong connections** between commercial districts, residences, and green spaces





# Quality of Life

Charleston appeals to a wide range of people to **live, visit, do business, learn and have fun** because of its offerings in culture, education, tourism, recreation, and **public/ private/ institutional collaboration** as the region's anchor.



# Transportation & Infrastructure

Provide a **safe and convenient transportation system** that provides **travel choices** and balances the needs of all users and provide **quality infrastructure**, gradually upgrading the system to **reduce negative impacts** on the environment and public health

# Opportunities and Challenges

- Topography poses challenges for accommodating pedestrians and bicyclists
- Young professionalize desire a multi-model transportation system that incorporates motorized and non-motorized options
- One-way streets considered confusing by some and typically have higher auto speeds than two-way streets
- Rivers are an impediment to connecting city districts
- Grid streets provide good connectivity and alternative routing
- Some of the key streets in the city are under jurisdiction of the West Virginia Division of Highways

# Mobility and Infrastructure Actions

- Evaluate changes to select one-way streets within the existing curb width
- Evaluate traffic calming measures (like speed tables, striping to distinguish on-street parking from travel lanes, curb bumpouts and crosswalks at intersections, etc.
- Require bike racks for uses that may attract bicyclists like restaurants, shopping centers
- Provide a network of bike trails and routes to make it comfortable and easy for people of all ages and abilities to walk or bicycle throughout the city and link with neighboring communities and activity centers

# One-way Alternatives

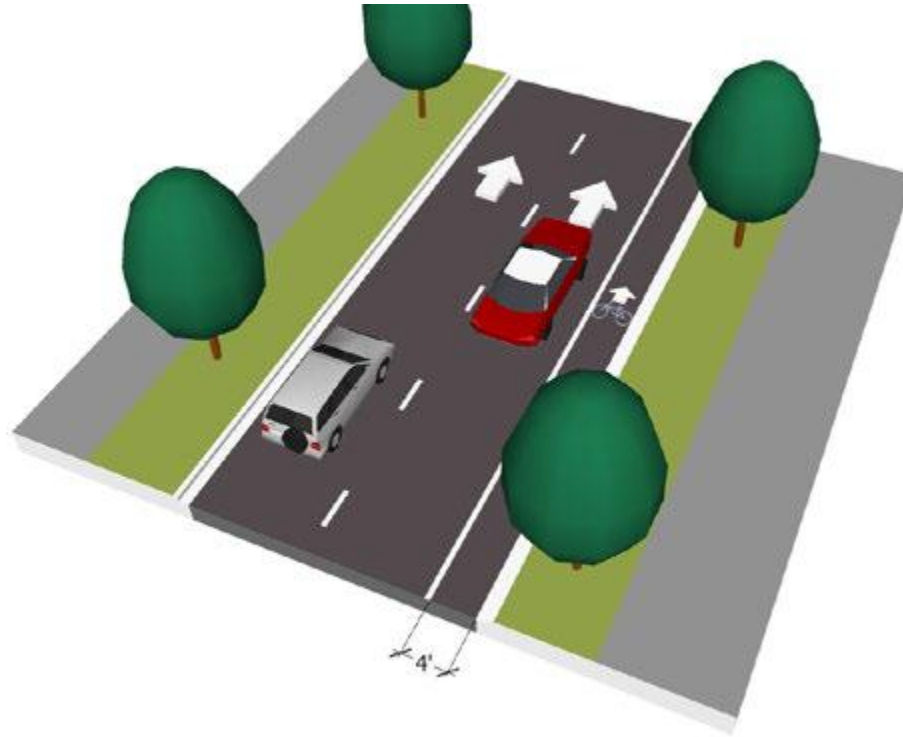
**Existing: One-way**



Processes highest traffic volumes

# One-way Alternatives

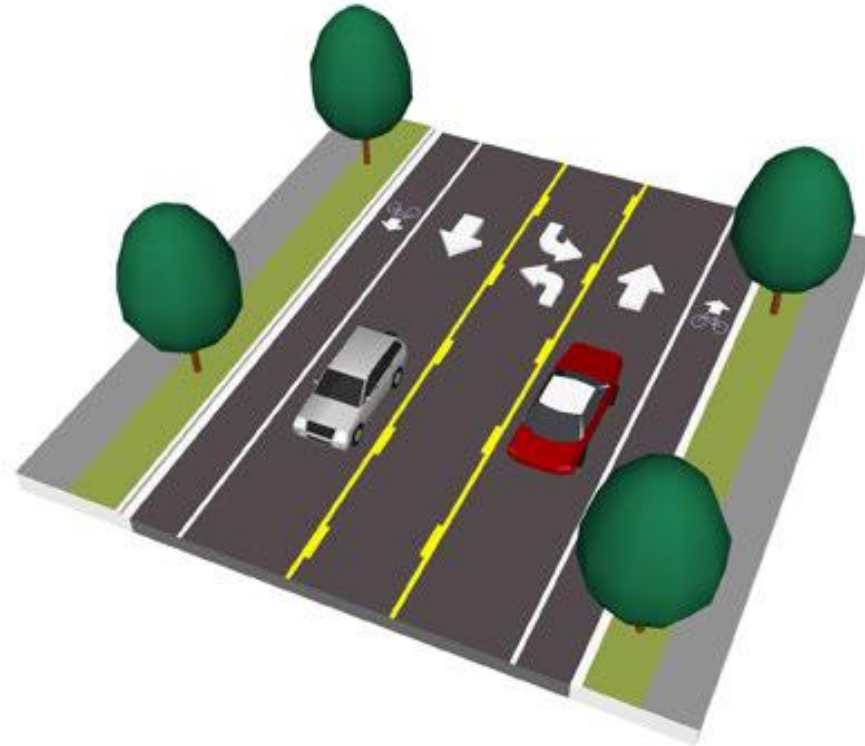
## One-way Road Diet



- “Diet” frees up space for a bike lane, wider sidewalks or on-street parking
- Easier pedestrian crossing

# One-way Alternatives

## Two-way conversion



- Eases wayfinding
- Slows traffic
- Improved business recruitment, access, and visibility

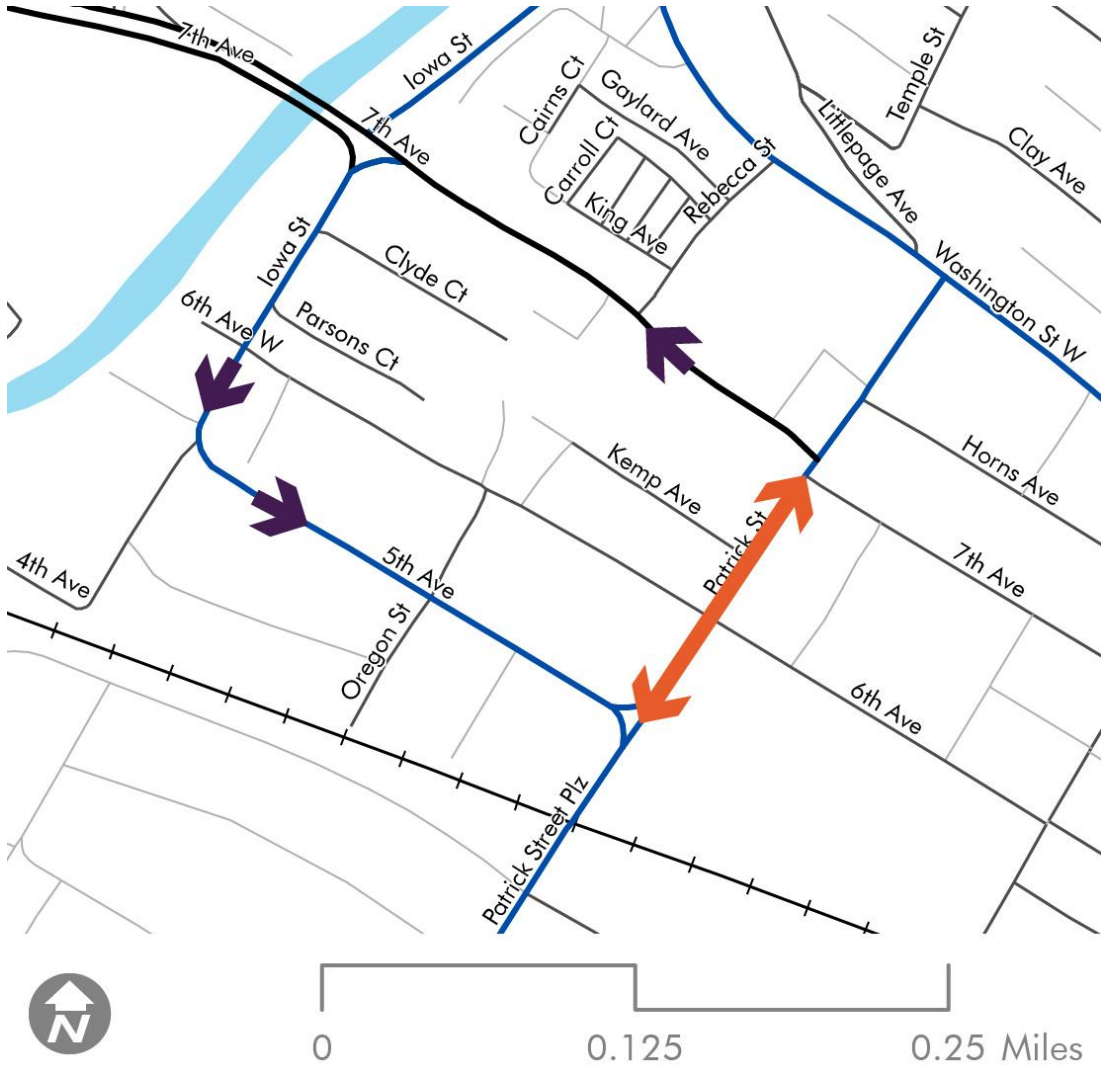
# Changing Road Design One-way/two-way





# Changing Road Design

## One-way/two-way



# Access Management



Existing excessive curb cuts

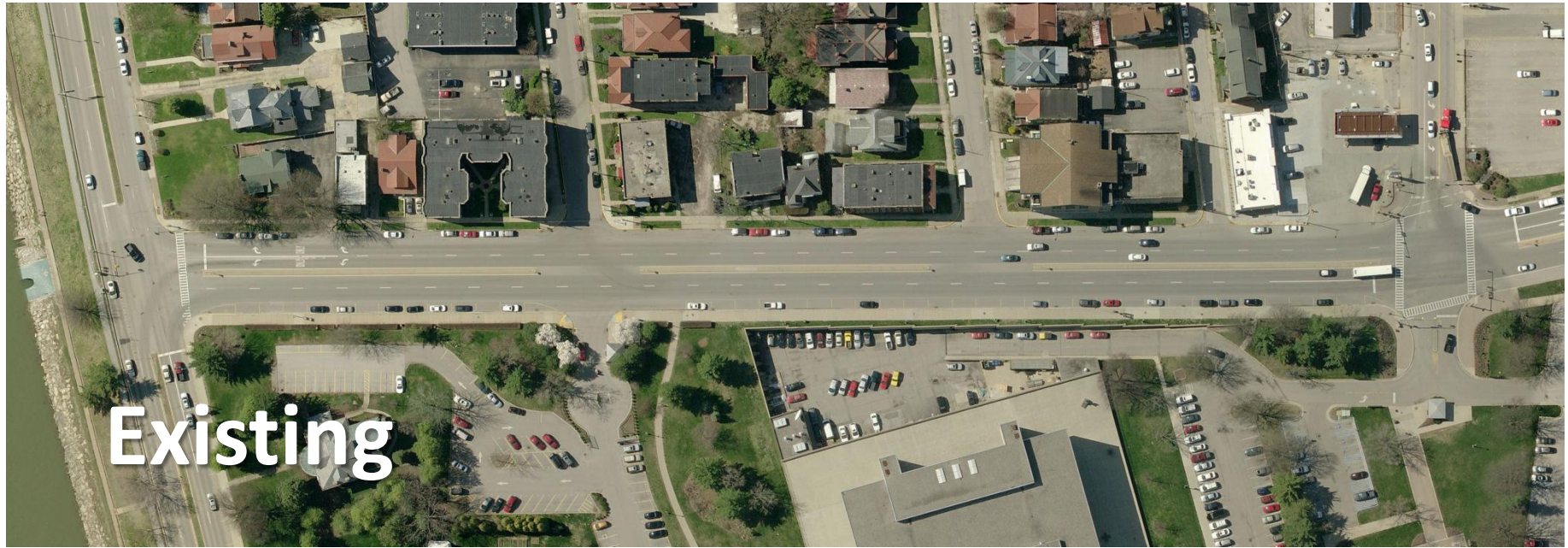


Potential consolidation and elimination of curb cuts

# **Greenbrier Streetscape**

## **Pedestrian Improvements**

# Greenbrier Streetscape Improvements



- Not a very welcoming gateway to the City and the Capitol Complex
- Excessively wide lanes
- Difficult and inconvenient pedestrian crossings

# Greenbrier Streetscape Improvements



Existing conditions

# Greenbrier Streetscape Improvements



# Greenbrier Streetscape Improvements



- Road Diet – narrow the lanes and widen the medium
- Pedestrian bump outs
- Well delineated pedestrian crossings
- Street trees

# Greenbrier Streetscape Improvements



Before



# Greenbrier Streetscape Improvements



# Greenbrier Streetscape Improvements



Before

# Greenbrier Streetscape Improvements



After

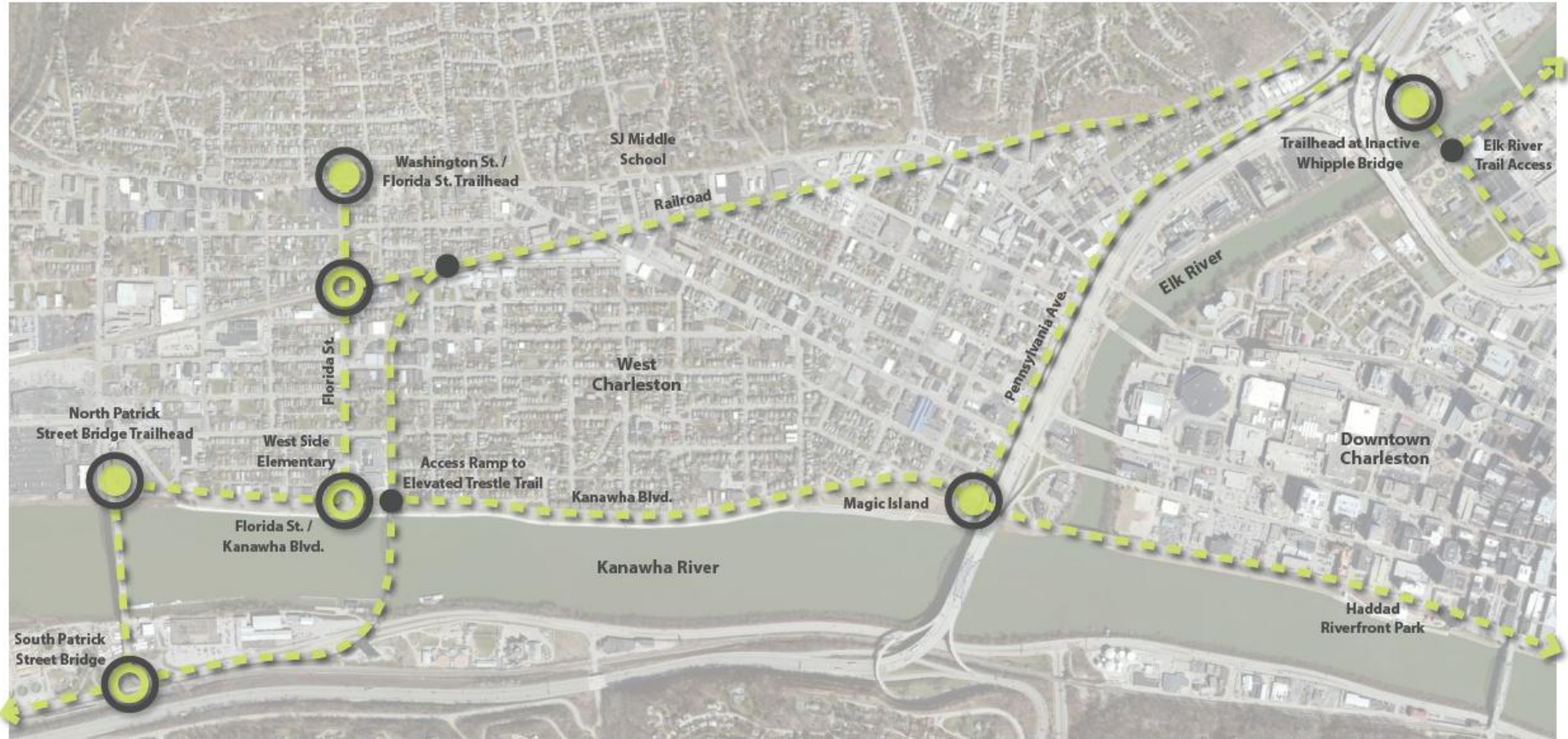
# **Kanawha Trestle & Rail Trail Master Plan**

# **Kanawha Trestle & Rail Trail Master Plan**

- **Create a Greenway Plan to connect the East End, West Side, and Downtown areas**
- **Enhance separation between vehicular and pedestrian traffic patterns**
- **Identify key nodes along the proposed trail to further develop**
- **Improve public safety and promote healthy lifestyles**

# Kanawha Trestle & Rail Trail Master Plan

## Kanawha Trestle Trail System Overview - West Charleston

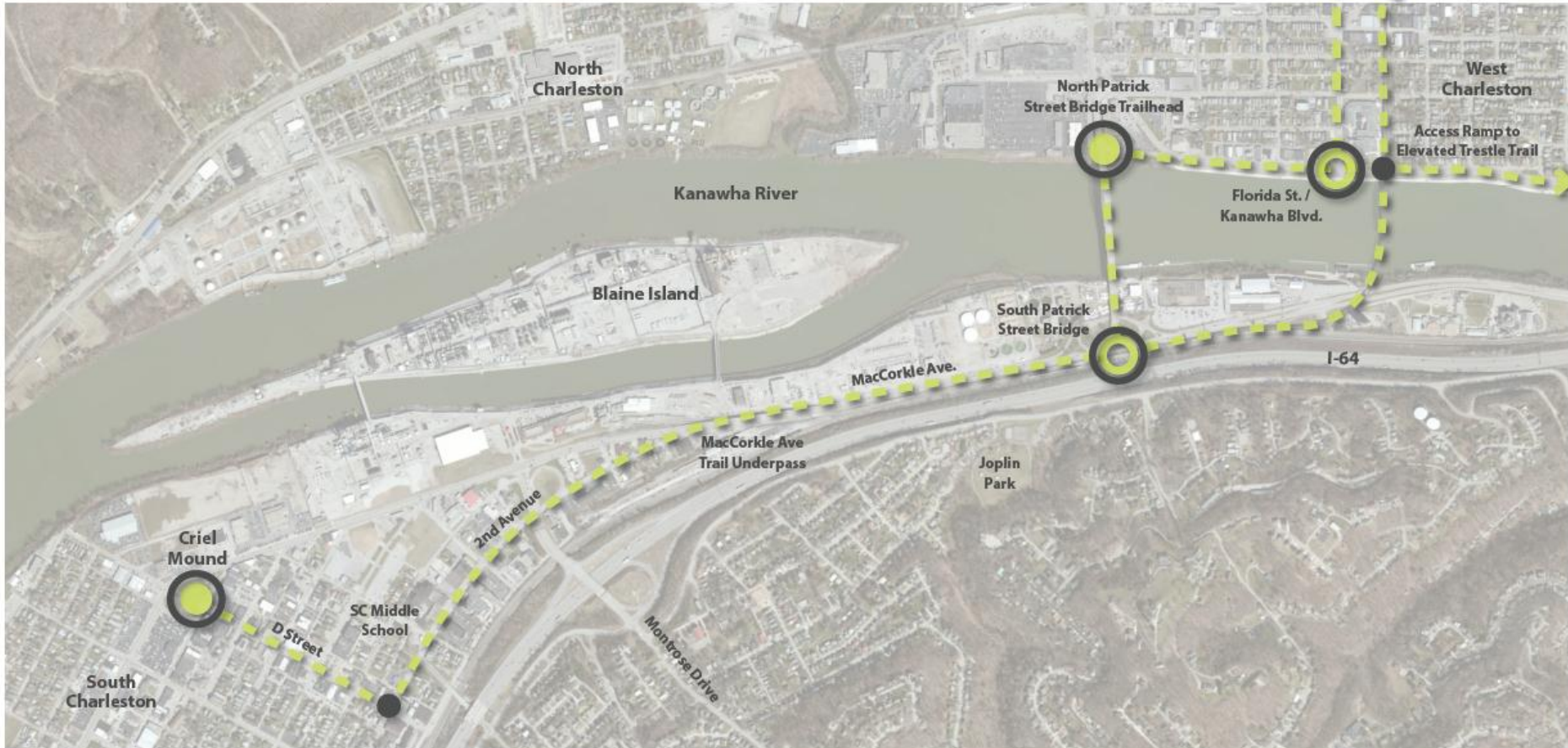


1" = 1000'

- - - Proposed Trail
- Minor Trail Node
- Major Trail Node
- Trailhead

# Kanawha Trestle & Rail Trail Master Plan

Kanawha Trestle Trail System Overview - South Charleston



1" = 1000'

 Proposed Trail

 Minor Trail Node

 Major Trail Node

 Trailhead

RECOMMENDATIONS

# Kanawha Trestle & Rail Trail Master Plan

## Kanawha Trestle Trail System Overview - Downtown & East Charleston



 1" = 1000'

 Proposed Trail

 Minor Trail Node

 Major Trail Node

 Trailhead

**RECOMMENDATIONS**



# **Kanawha Boulevard Walk and Bikeway System**

# Kanawha Boulevard Walk and Bikeway System



gai consultants

# Kanawha Boulevard Walk and Bikeway System



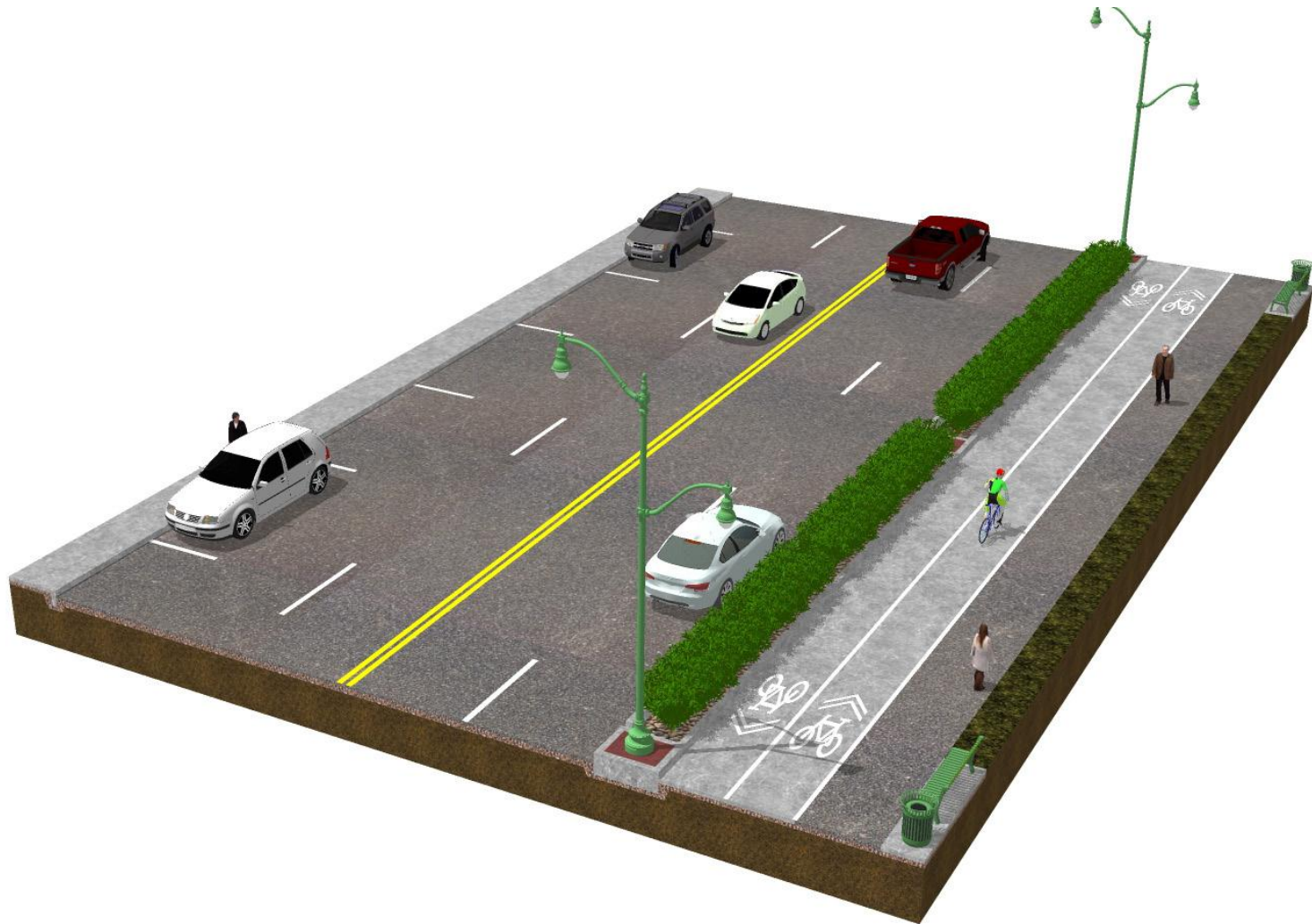
# Kanawha Boulevard Walk and Bikeway System



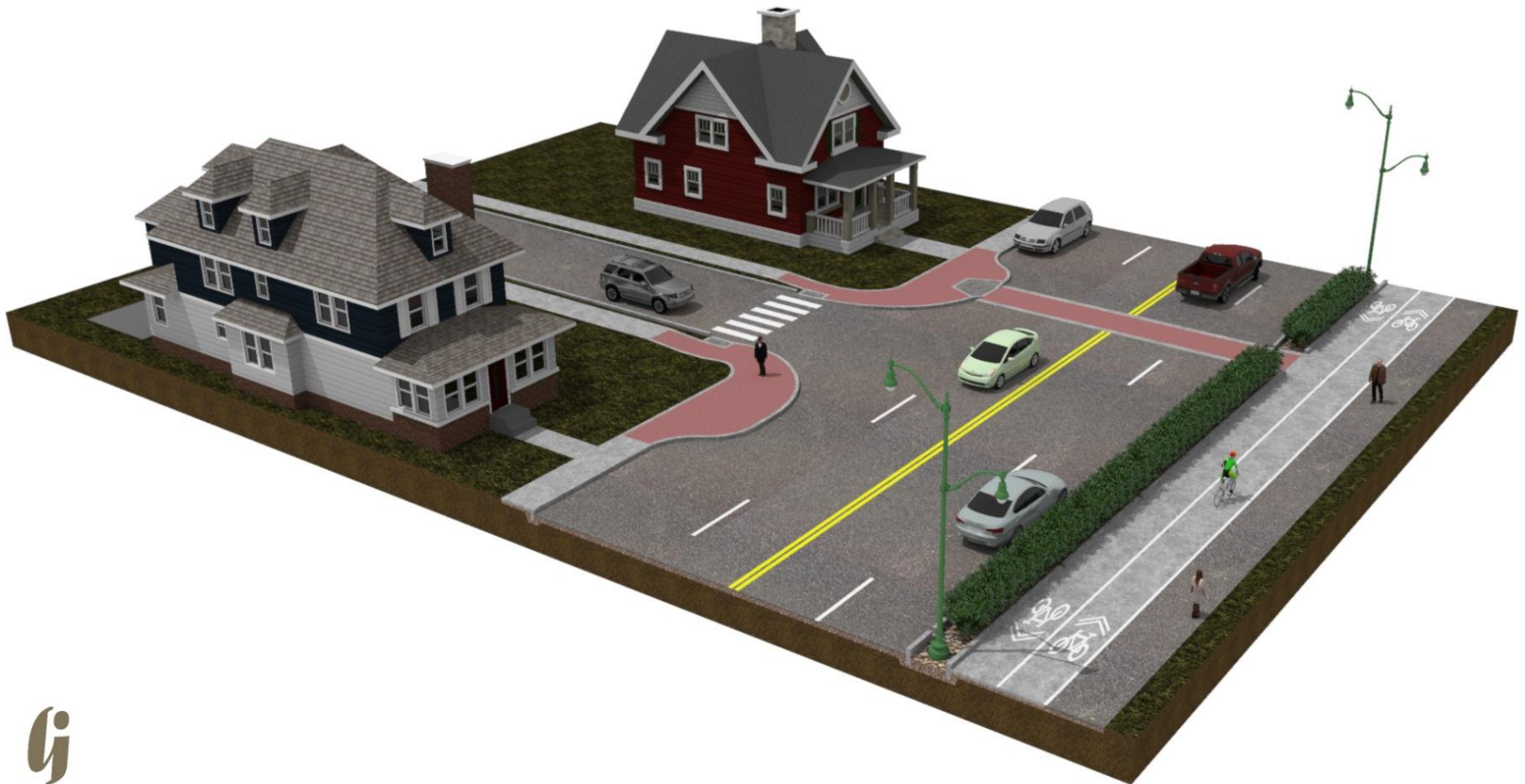
# Kanawha Boulevard Walk and Bikeway System



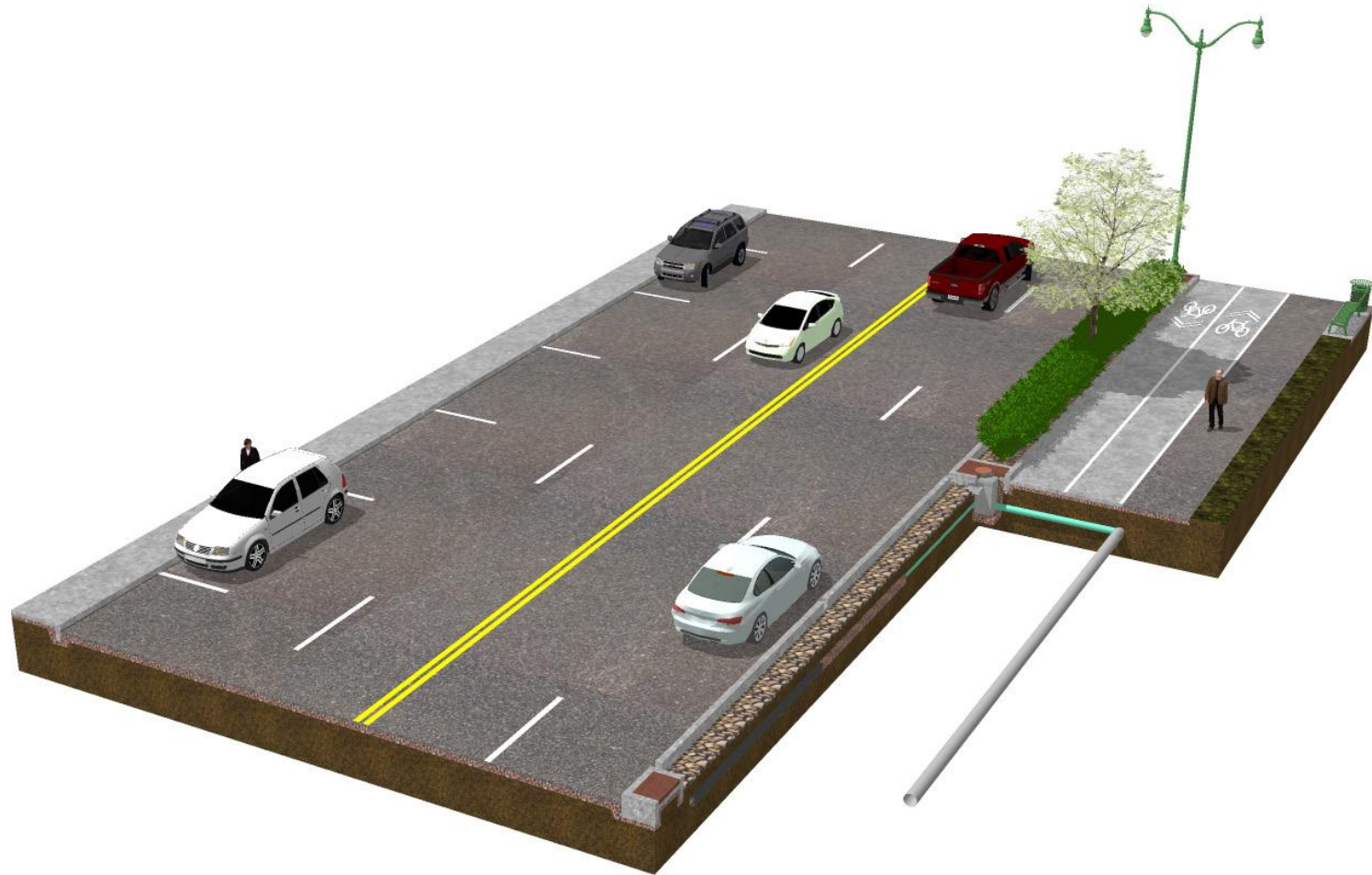
# Kanawha Boulevard Walk and Bikeway System



# Kanawha Boulevard Walk and Bikeway System



# Kanawha Boulevard Walk and Bikeway System





# Contact Information

## **Dan Vriendt**

Planning Director, City of Charleston

304-348-8105

dan.vriendt@cityofcharleston.org

## **Dennis Strawn**

Bicycling and Walking Advocate

304-348-8026

dennis.a.strawn@gmail.com

Plans can be download at:

<http://www.cityofcharleston.org/government/city-departments/planning>