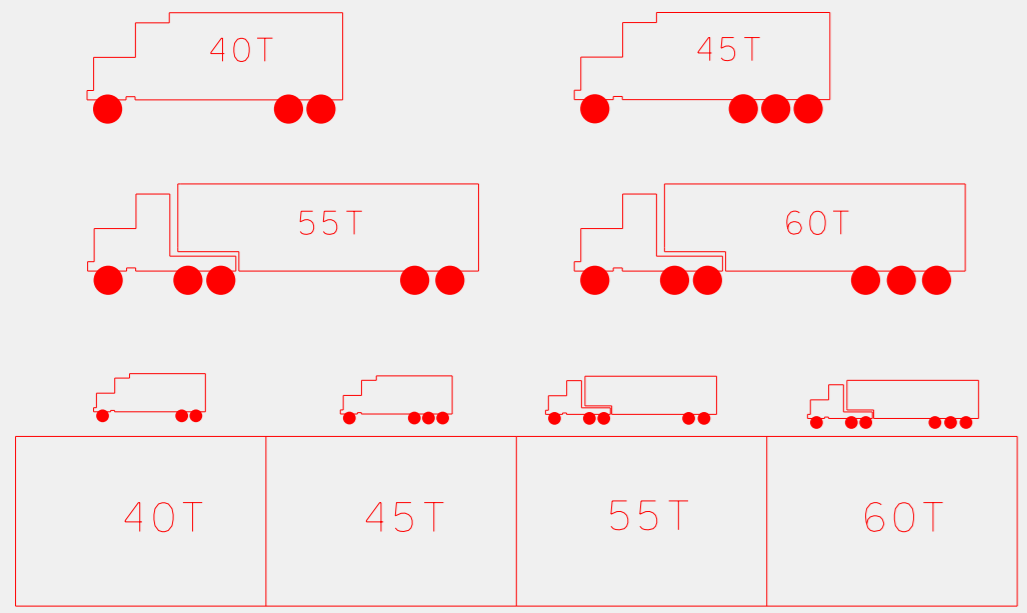
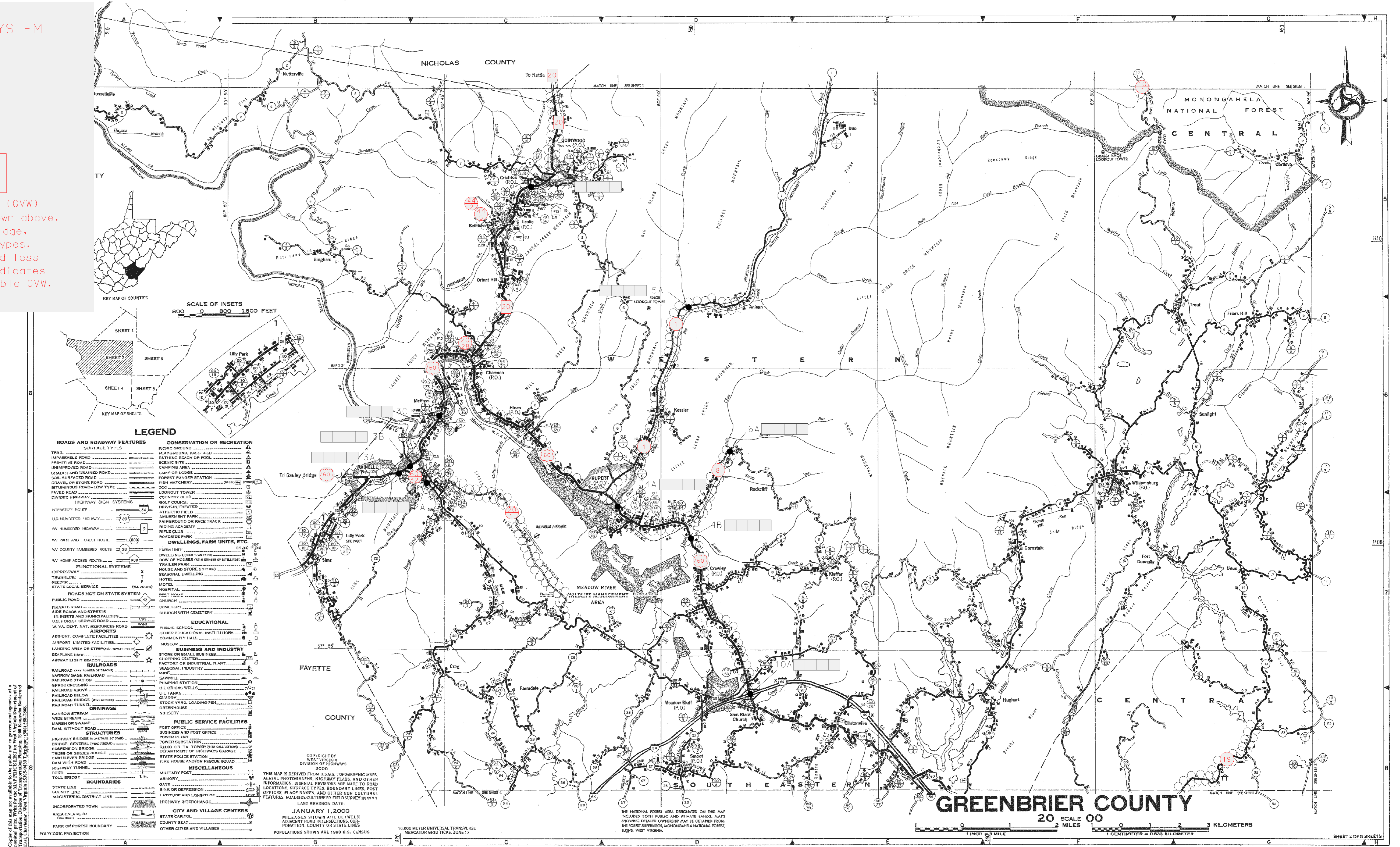


COAL RESOURCE TRANSPORTATION SYSTEM (CRTS) 1/2/2013



The maximum allowable Gross Vehicle Weight (GVW) in tons for each of four vehicle types is shown above. Four boxes are shown adjacent to each bridge, corresponding to the above four vehicle types. A number in any box indicates a posted load less than the maximum allowable. A blank box indicates the bridge limit will be the maximum allowable GVW.

○○○○○ = CRTS Route



Copies of this map are available to the public and to government agencies at a nominal price. Write for the MAP PRICE LIST to West Virginia Department of Transportation, 1000 Capitol Building, Charleston, West Virginia 25304 and telephone (304) 526-2388.

THIS MAP IS DERIVED FROM U.S.G.S. TOPOGRAPHIC MAPS, AERIAL PHOTOGRAPHS, HIGHWAY PLANS, AND OTHER INFORMATION. BURNAL REVISIONS ARE MADE TO ROAD LOCATIONS, SURFACE TYPES, BOUNDARY LINES, POST OFFICES, PLACE NAMES, AND OTHER SIGNIFICANT FEATURES. ROADSIDE CULTURE BY FIELD SURVEY IN 1993.
 LAST REVISION DATE:
 JANUARY 1, 2000
 MILES ARE SHOWN AS WELL AS ADJACENT ROAD INTERSECTIONS. LOCATION, COUNTY OR STATE LINES, POPULATIONS SHOWN ARE 1990 U.S. CENSUS.

THE NATIONAL FOREST AREA DESIGNATED ON THIS MAP INCLUDES BOTH PUBLIC AND PRIVATE LANDS. MAPS SHOWING DETAILED OWNERSHIP MAY BE OBTAINED FROM THE FOREST SUPERVISOR, ADMINISTRATION NATIONAL FOREST, BUCKS, WEST VIRGINIA.