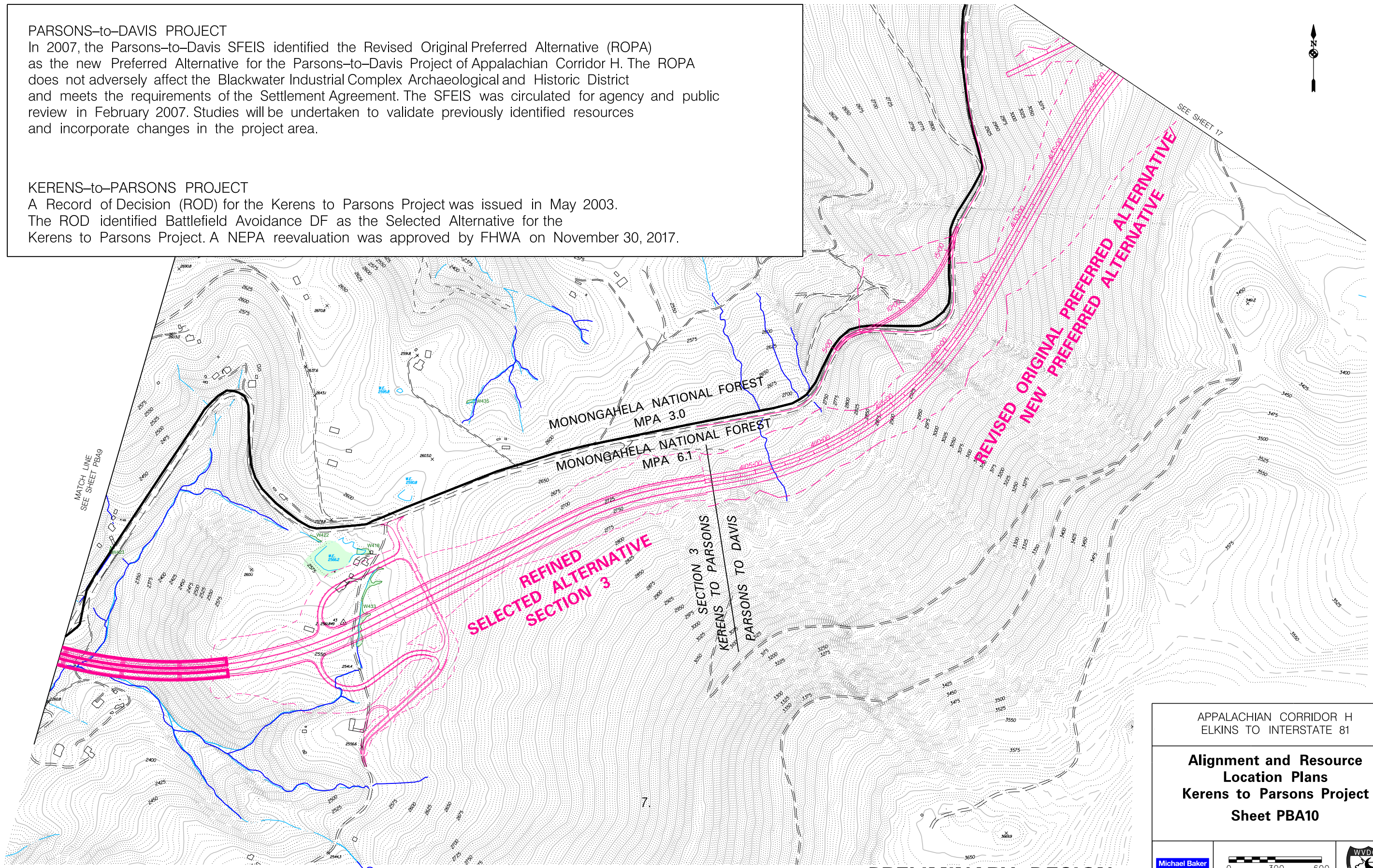


PARSONS-to-DAVIS PROJECT

In 2007, the Parsons-to-Davis SFEIS identified the Revised Original Preferred Alternative (ROPA) as the new Preferred Alternative for the Parsons-to-Davis Project of Appalachian Corridor H. The ROPA does not adversely affect the Blackwater Industrial Complex Archaeological and Historic District and meets the requirements of the Settlement Agreement. The SFEIS was circulated for agency and public review in February 2007. Studies will be undertaken to validate previously identified resources and incorporate changes in the project area.

KERENS-to-PARSONS PROJECT

A Record of Decision (ROD) for the Kerens to Parsons Project was issued in May 2003. The ROD identified Battlefield Avoidance DF as the Selected Alternative for the Kerens to Parsons Project. A NEPA reevaluation was approved by FHWA on November 30, 2017.



SEE SHEET 17

MATCH LINE
SEE SHEET PBA9

REFINED
SELECTED ALTERNATIVE
SECTION 3

REVISED ORIGINAL PREFERRED ALTERNATIVE
NEW PREFERRED ALTERNATIVE

MONONGAHELA NATIONAL FOREST
MPA 3.0
MONONGAHELA NATIONAL FOREST
MPA 6.1

SECTION 3
KERENS TO PARSONS
PARSONS TO DAVIS

APPALACHIAN CORRIDOR H
ELKINS TO INTERSTATE 81

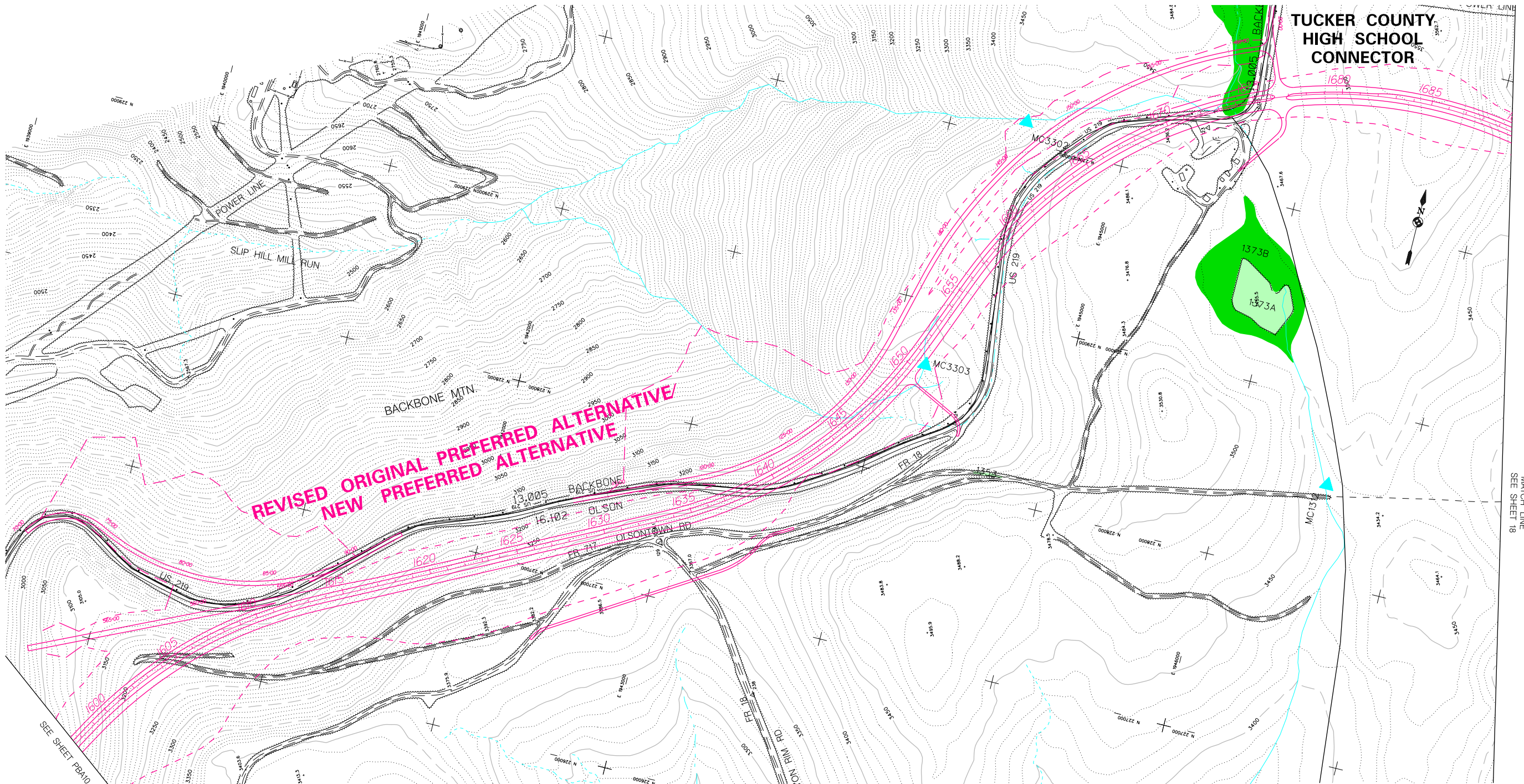
Alignment and Resource
Location Plans
Kerens to Parsons Project
Sheet PBA10



PRELIMINARY DESIGN

AUGUST 2019

TUCKER COUNTY HIGH SCHOOL CONNECTOR



MATCH LINE
SEE SHEET 18

PARSONS-to-DAVIS PROJECT
 In 2007, the Parsons-to-Davis SFEIS identified the Revised Original Preferred Alternative (ROPA) as the new Preferred Alternative for the Parsons-to-Davis Project of Appalachian Corridor H. The ROPA does not adversely affect the Blackwater Industrial Complex Archaeological and Historic District and meets the requirements of the Settlement Agreement. The SFEIS was circulated for agency and public review in February 2007. Studies will be undertaken to validate previously identified resources and incorporate changes in the project area.

APPALACHIAN CORRIDOR H
ELKINS TO INTERSTATE 81

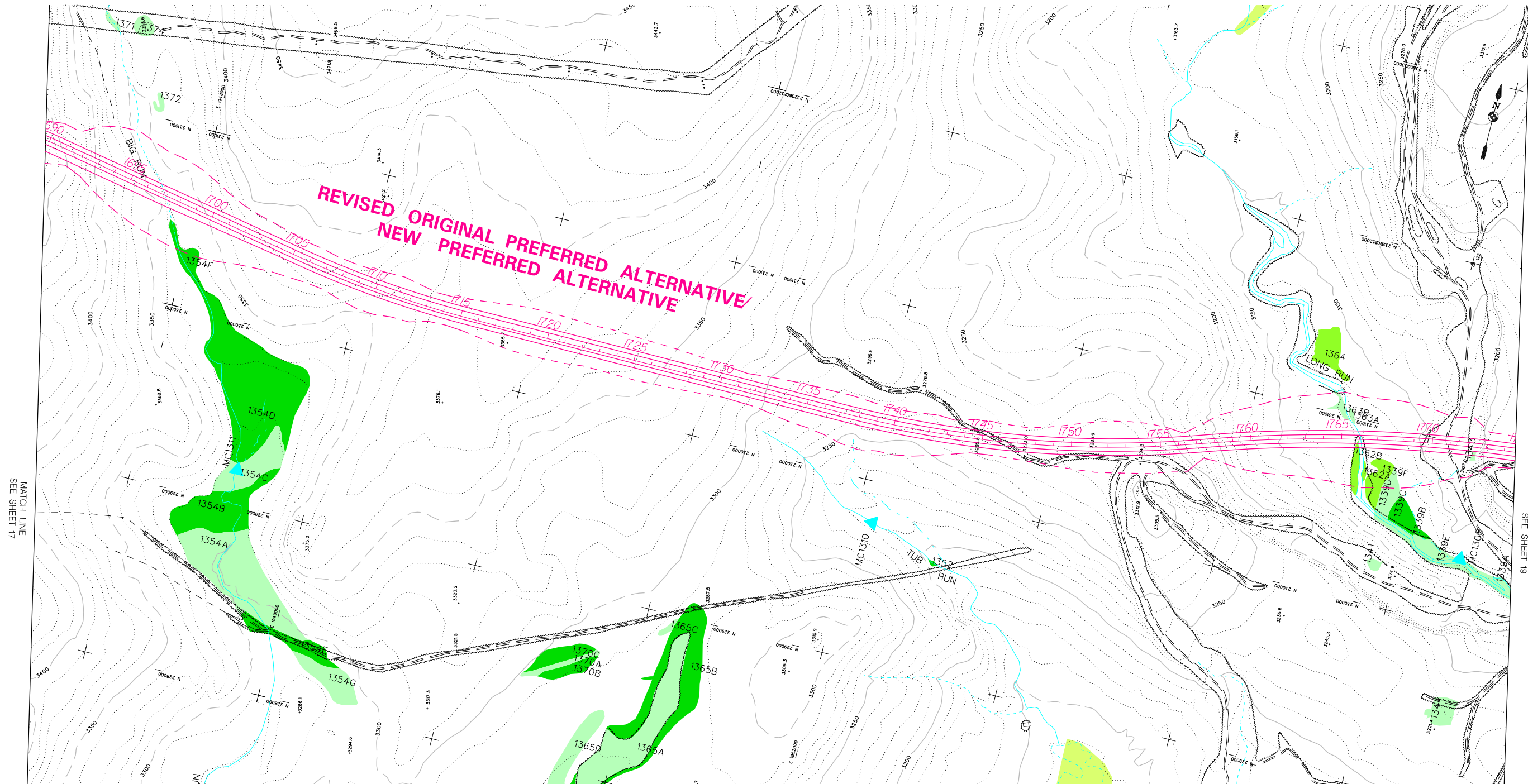
Alignment and Resource
Location Plans
Old Section 13
Sheet 17 of 65

Michael Baker
INTERNATIONAL

0 300 600
SCALE IN FEET

PRELIMINARY DESIGN

AUGUST 2019



PARSONS-to-DAVIS PROJECT
 In 2007, the Parsons-to-Davis SFEIS identified the Revised Original Preferred Alternative (ROPA) as the new Preferred Alternative for the Parsons-to-Davis Project of Appalachian Corridor H. The ROPA does not adversely affect the Blackwater Industrial Complex Archaeological and Historic District and meets the requirements of the Settlement Agreement. The SFEIS was circulated for agency and public review in February 2007. Studies will be undertaken to validate previously identified resources and incorporate changes in the project area.

APPALACHIAN CORRIDOR H
 ELKINS TO INTERSTATE 81

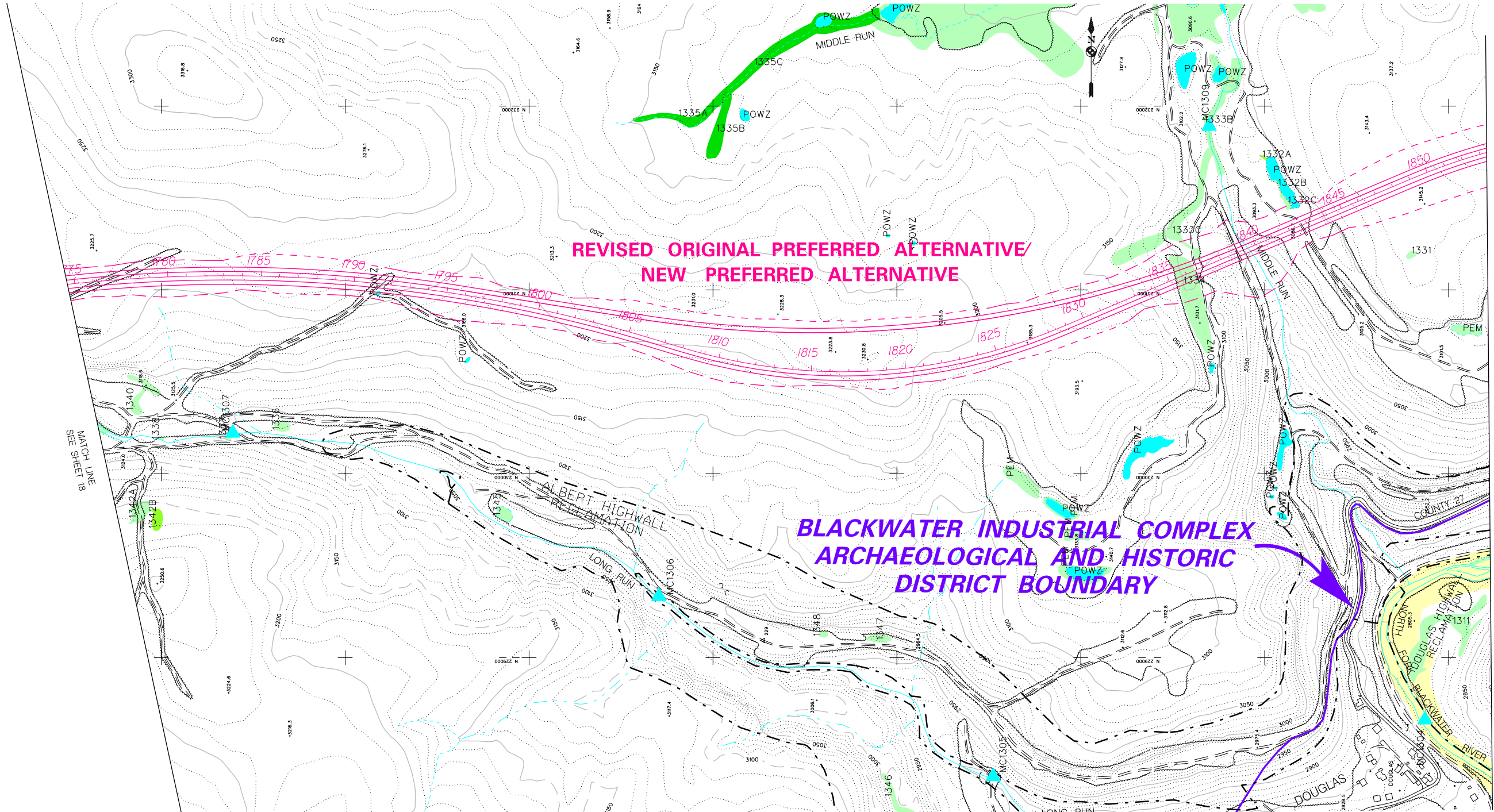
Alignment and Resource
 Location Plans
 Old Section 13
 Sheet 18 of 65

Michael Baker INTERNATIONAL

SCALE IN FEET

PRELIMINARY DESIGN

AUGUST 2019



MATCH LINE
SEE SHEET 18

MATCH LINE
SEE SHEET 20

**REVISED ORIGINAL PREFERRED ALTERNATIVE/
NEW PREFERRED ALTERNATIVE**

**BLACKWATER INDUSTRIAL COMPLEX
ARCHAEOLOGICAL AND HISTORIC
DISTRICT BOUNDARY**

PARSONS-to-DAVIS PROJECT

In 2007, the Parsons-to-Davis SFEIS identified the Revised Original Preferred Alternative (ROPA) as the new Preferred Alternative for the Parsons-to-Davis Project of Appalachian Corridor H. The ROPA does not adversely affect the Blackwater Industrial Complex Archaeological and Historic District and meets the requirements of the Settlement Agreement. The SFEIS was circulated for agency and public review in February 2007. Studies will be undertaken to validate previously identified resources and incorporate changes in the project area.

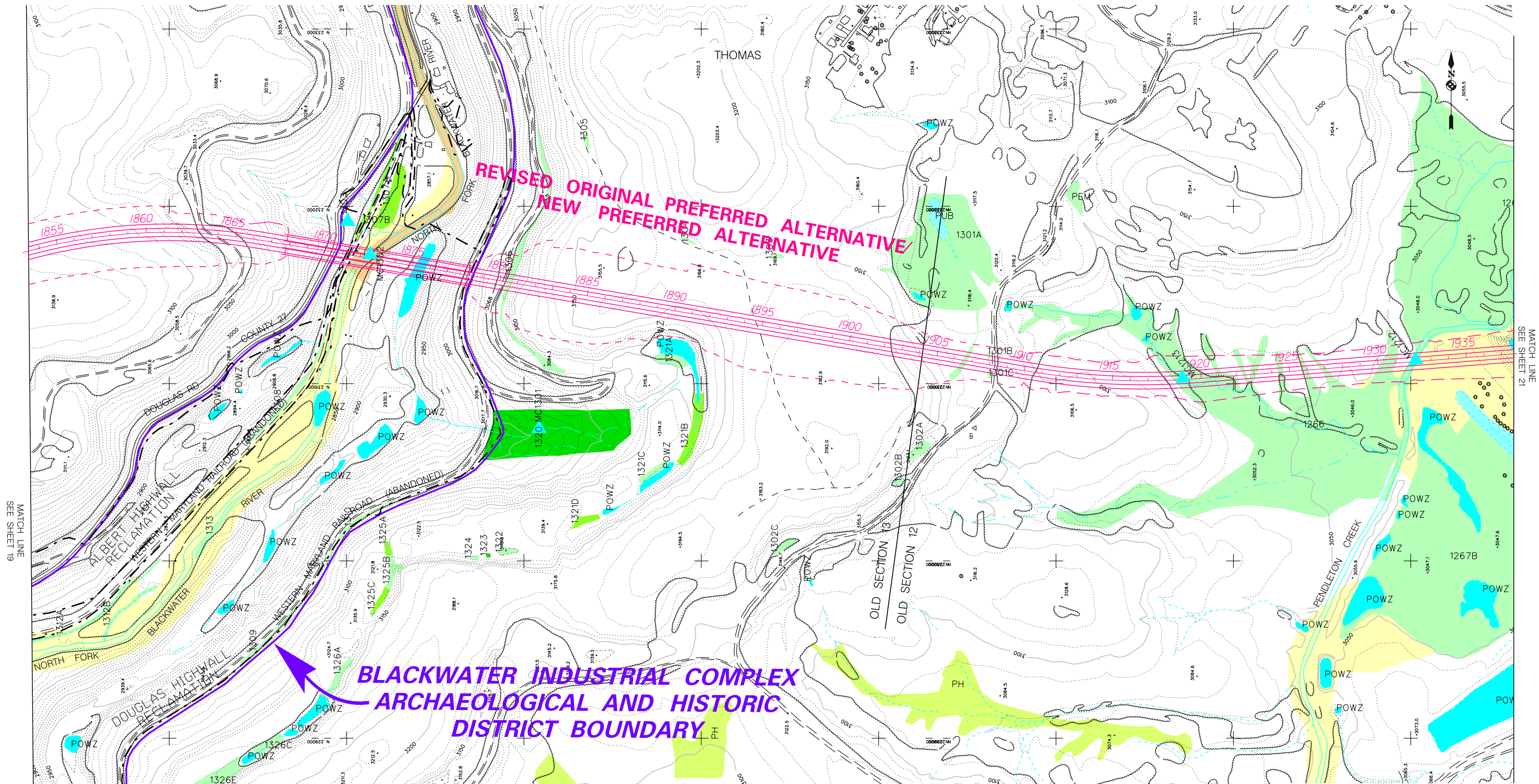
NOTE: CONTOURS ALONG THE NORTH FORK BLACKWATER RIVER VALLEY DO NOT REPRESENT EXISTING CONDITIONS DUE TO ABANDONED MINE LAND RECLAMATION PROJECTS SUBSEQUENT TO PREPARATION OF MAPPING.

APPALACHIAN CORRIDOR H
ELKINS TO INTERSTATE 81

Alignment and Resource
Location Plans
Old Section 13
Sheet 19 of 65



PRELIMINARY DESIGN



PARSONS-to-DAVIS PROJECT
 In 2007, the Parsons-to-Davis SFEIS identified the Revised Original Preferred Alternative (ROPA) as the new Preferred Alternative for the Parsons-to-Davis Project of Appalachian Corridor H. The ROPA does not adversely affect the Blackwater Industrial Complex Archaeological and Historic District and meets the requirements of the Settlement Agreement. The SFEIS was circulated for agency and public review in February 2007. Studies will be undertaken to validate previously identified resources and incorporate changes in the project area.

NOTE: CONTOURS ALONG THE NORTH FORK BLACKWATER RIVER VALLEY DO NOT REPRESENT EXISTING CONDITIONS DUE TO ABANDONED MINE LAND RECLAMATION PROJECTS SUBSEQUENT TO PREPARATION OF MAPPING.

APPALACHIAN CORRIDOR H
 ELKINS TO INTERSTATE 81

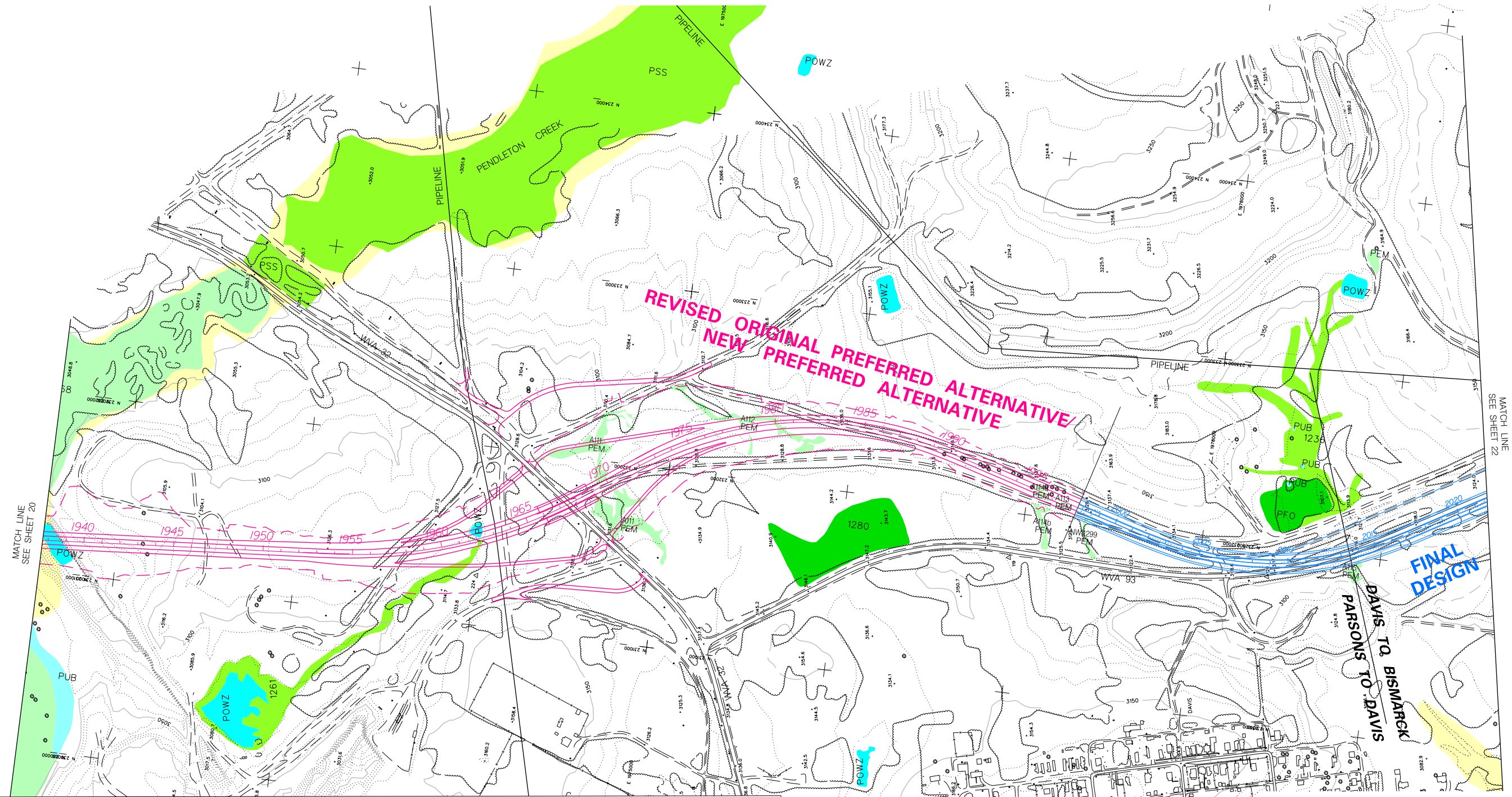
Alignment and Resource
 Location Plans
 Old Section 13 and 12
 Sheet 20 of 65

Michael Baker INTERNATIONAL

SCALE IN FEET

PRELIMINARY DESIGN

AUGUST 2019



MATCH LINE
SEE SHEET 20

MATCH LINE
SEE SHEET 22

PARSONS-to-DAVIS PROJECT
 In 2007, the Parsons-to-Davis SFEIS identified the Revised Original Preferred Alternative (ROPA) as the new Preferred Alternative for the Parsons-to-Davis Project of Appalachian Corridor H. The ROPA does not adversely affect the Blackwater Industrial Complex Archaeological and Historic District and meets the requirements of the Settlement Agreement. The SFEIS was circulated for agency and public review in February 2007. Studies will be undertaken to validate previously identified resources and incorporate changes in the project area.

APPALACHIAN CORRIDOR H
ELKINS TO INTERSTATE 81

Alignment and Resource
Location Plans
Old Section 12
Sheet 21 of 65

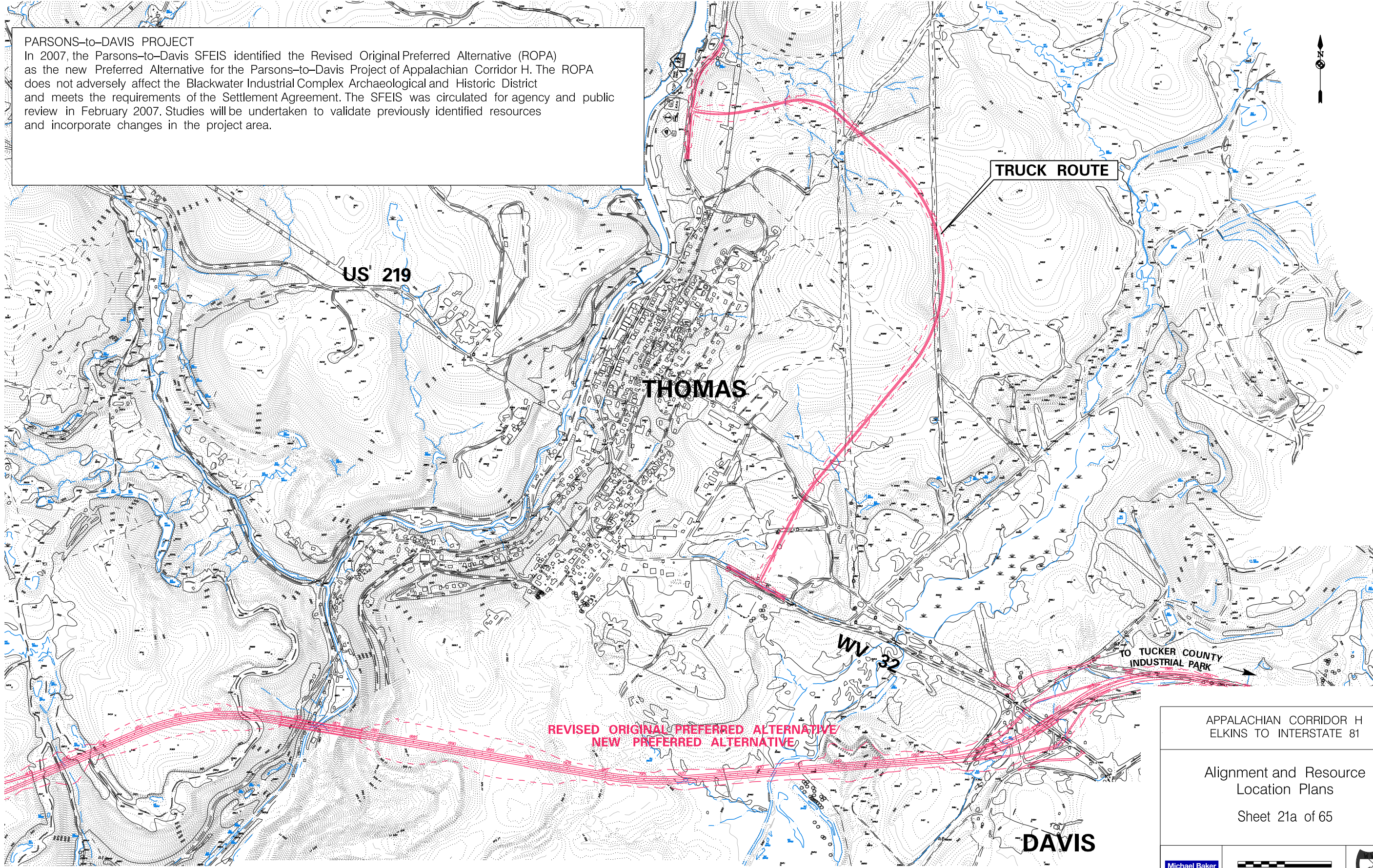
Michael Baker INTERNATIONAL

SCALE IN FEET

PRELIMINARY DESIGN

AUGUST 2019

PARSONS-to-DAVIS PROJECT
 In 2007, the Parsons-to-Davis SFEIS identified the Revised Original Preferred Alternative (ROPA) as the new Preferred Alternative for the Parsons-to-Davis Project of Appalachian Corridor H. The ROPA does not adversely affect the Blackwater Industrial Complex Archaeological and Historic District and meets the requirements of the Settlement Agreement. The SFEIS was circulated for agency and public review in February 2007. Studies will be undertaken to validate previously identified resources and incorporate changes in the project area.



TRUCK ROUTE

US 219

THOMAS

WV 32

TO TUCKER COUNTY INDUSTRIAL PARK

REVISED ORIGINAL PREFERRED ALTERNATIVE
NEW PREFERRED ALTERNATIVE

DAVIS

APPALACHIAN CORRIDOR H
ELKINS TO INTERSTATE 81

Alignment and Resource
Location Plans
Sheet 21a of 65

Michael Baker INTERNATIONAL

SCALE IN FEET

PRELIMINARY DESIGN