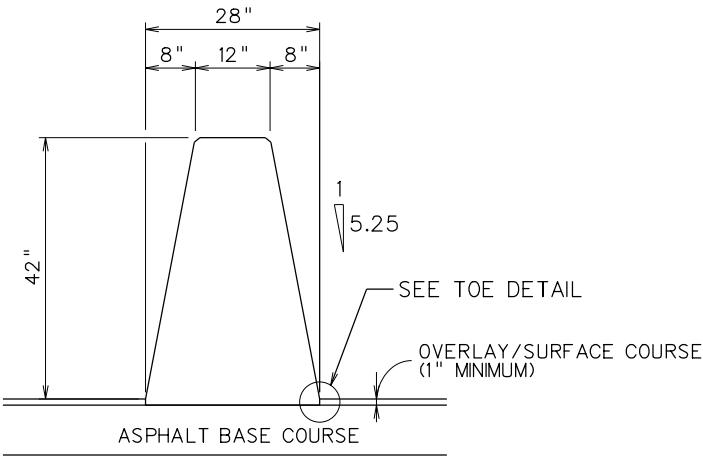
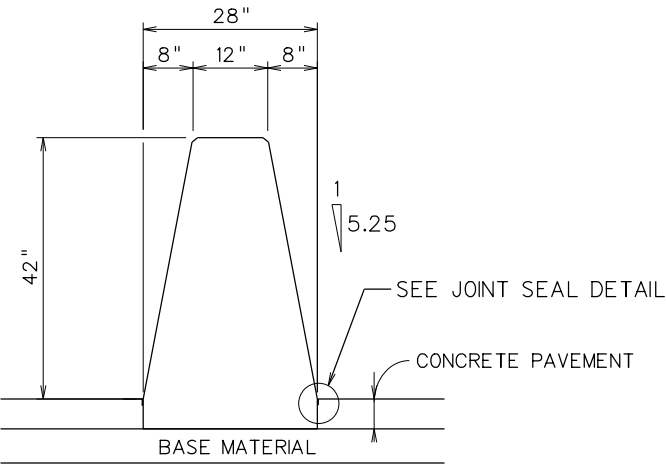


Public Roads Div.	State Dist. No.	State Project No.	Federal Project No.	Fiscal Year	County	Sheet No.	Total Sheets
W. V.	---	---	---	201-	---	---	---



TYPE X MEDIAN
SINGLE SLOPE CONCRETE BARRIER
(ASPHALT PAVEMENTS)



TYPE X MEDIAN
SINGLE SLOPE CONCRETE BARRIER
(CONCRETE PAVEMENTS)

NOTES

CAST-IN-PLACE OR SLIP FORMED CONCRETE MEDIAN BARRIER SHALL BE CONSTRUCTED IN SECTIONS AS SHOWN HEREIN AND SHALL BE CONSTRUCTED IN ACCORDANCE WITH THE APPLICABLE PROVISIONS OF SECTION 610 OF THE SPECIFICATIONS.

CONCRETE SHALL MEET A MINIMUM DESIGN STRENGTH OF 4000 PSI, AND ANY APPLICABLE PROVISIONS OF SECTION 601, 501 OR 708 OF THE SPECIFICATIONS. REBAR MAY BE EITHER GRADE 40 OR 60.

MEDIAN BARRIER CONTRACTION JOINTS OVER EXISTING PAVEMENT CONTRACTION JOINTS SHALL BE SEPARATED BY OPEN JOINTS, MEDIAN JOINTS SHALL HAVE THE SAME WIDTH AS THE PAVEMENT JOINTS FOR THE FULL EXPOSED DEPTH OF THE MEDIAN.

AT ALL OTHER MEDIAN BARRIER CONTRACTION JOINTS A GROOVE 3/8" WIDE AND 2" DEEP, SHALL BE SAWED OR FORMED ACROSS THE TOP AND ALONG THE SIDES FOR THE ENTIRE DEPTH OF THE MEDIAN OR A FULL DEPTH BUTT JOINT SHALL BE FORMED. CONTRACTION JOINTS SHALL BE FORMED AT 15' INTERVALS ALONG THE LENGTH OF THE MEDIAN. THESE GROOVED OR BUTT JOINTS SHALL TRANSVERSELY ALIGN, WITHIN A PLUS OR MINUS ONE-FOOT TOLERANCE WITH THE JOINTS IN THE CONCRETE PAVEMENT.

EXPANSION JOINTS SHALL BE PLACED IN THE BARRIER MEDIAN AT STRUCTURES, OPPOSITE EXPANSION JOINTS IN THE CONCRETE PAVEMENT, OVER EXISTING EXPANSION JOINTS IN UNDERLYING CONCRETE PAVEMENT, AND AT OTHER LOCATIONS AS SHOWN ON THE PLANS OR DIRECTED BY THE ENGINEER. EXPANSION AT THESE JOINTS SHALL NOT REQUIRE END ANCHORAGE UNLESS INDICATED ON THE PLANS. AT EXPANSION JOINTS, MEDIAN BARRIER SECTIONS SHALL BE 3/4" APART AND THE OPENING FILLED, FOR THE ENTIRE DEPTH OF THE MEDIAN, WITH 3/4" PREFORMED JOINT FILLER WHICH COMPLIES WITH THE REQUIREMENTS OF SECTION 610 OF THE SPECIFICATIONS. THE FILLER SHALL BE RECESSED 1/4" IN FROM THE SIDES AND THE TOP OF THE MEDIAN AND THE COMPLETED JOINT SHALL RECEIVE NO FURTHER TREATMENT; E.G., SEALING WITH A WATERPROOF SEALER IS PROHIBITED.

THE FINISHED SURFACE OF THE MEDIAN BARRIER SHALL BE SMOOTH, DENSE, UNPITTED AND FREE FROM AIR BUBBLE POCKETS, DEPRESSIONS, AND HONEYCOMB. IF DEEMED NECESSARY BY THE ENGINEER, THE ABOVE MENTIONED FINISHED SURFACE WILL BE OBTAINED BY THE USE OF WATER AND A WOOD BLOCK OR CARBORUNDUM BRICK.

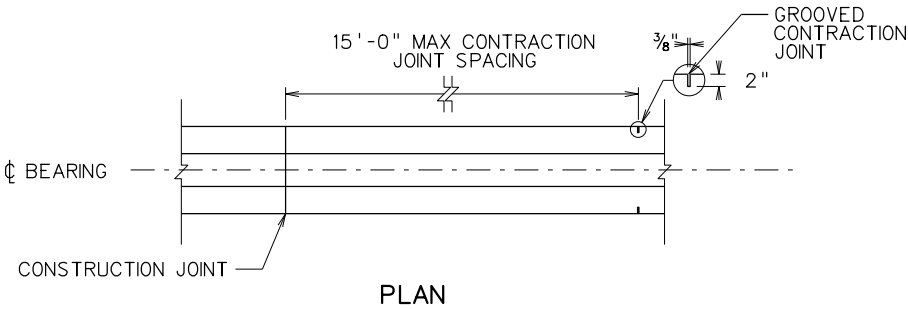
THE MEDIAN BARRIER SHALL BE ADEQUATELY TERMINATED AT EACH END, AS SHOWN OR SPECIFIED ELSEWHERE IN THE PROJECT PLANS.

DRAINAGE OPENINGS SHALL BE PROVIDED IN THE BARRIER MEDIANS WHERE INDICATED ON THE PLANS OR DIRECTED BY THE ENGINEER.

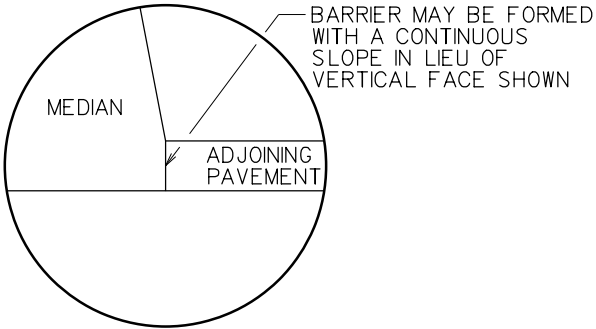
UNLESS OTHERWISE SPECIFIED, BI-DIRECTIONAL DELINEATORS, MEETING THE REQUIREMENTS OF 661 OF THE SPECIFICATIONS, SHALL BE SECURED AND MOUNTED ON SUITABLE SUPPORTS. DELINEATORS SHALL BE SPACED ALONG THE LENGTH OF THE MEDIAN BARRIER AS SHOWN AND SPECIFIED IN STANDARD DETAILS BOOK, VOLUME II.

TYPE OF SURFACE ADJACENT TO THE MEDIAN BARRIER SHALL BE SPECIFIED IN THE PLANS SHALL BE PAID FOR SEPARATELY.

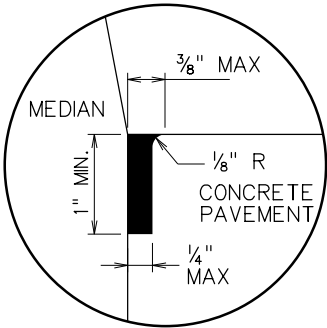
THE COST OF CONCRETE MEDIAN, REBAR, PREFORMED JOINT FILLER, DELINEATORS AND DELINEATOR MOUNTINGS SHALL BE INCLUDED IN THE COST OF THE "MEDIAN, TYPE X".



JOINT LAYOUT



TOE DETAIL

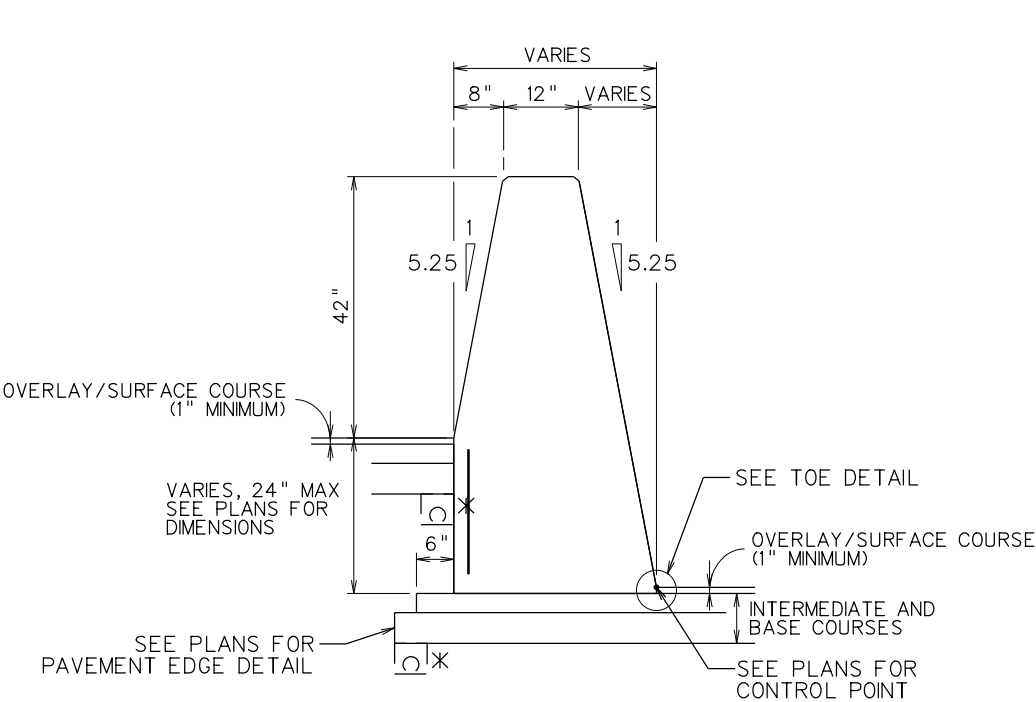


JOINT SEAL DETAIL

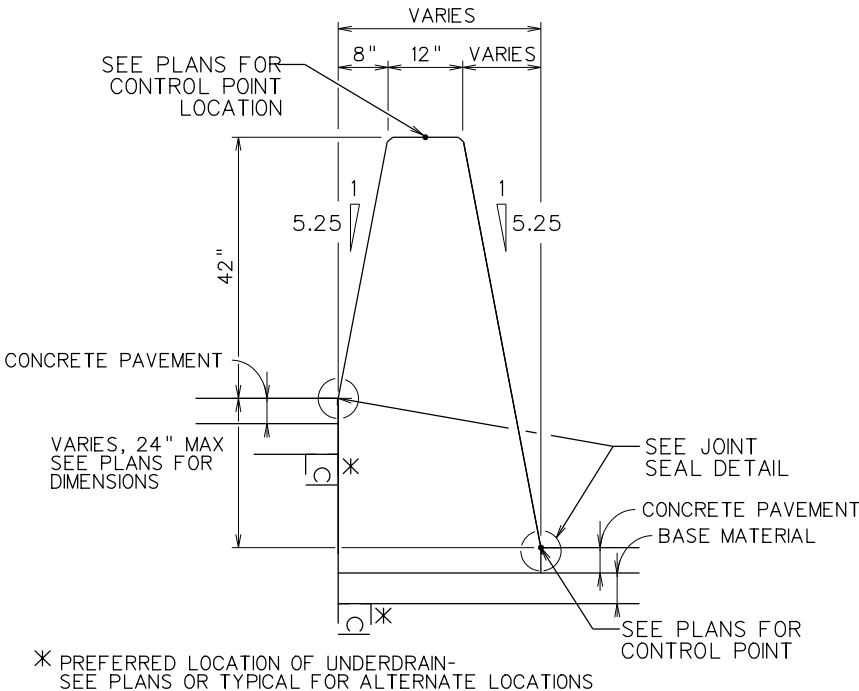
REVISION NUMBER	SHEET NUMBER	REVISION	DATE	BY

THE WEST VIRGINIA DEPARTMENT OF TRANSPORTATION
DIVISION OF HIGHWAYS
**TYPE X MEDIAN BARRIER
SPECIAL DETAIL (1 OF 2)**

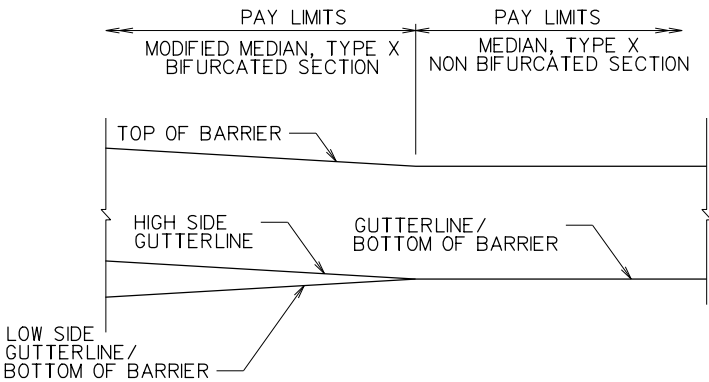
Public Roads Div.	State Dist. No.	State Project No.	Federal Project No.	Fiscal Year	County	Sheet No.	Total Sheets
W. V.				201			



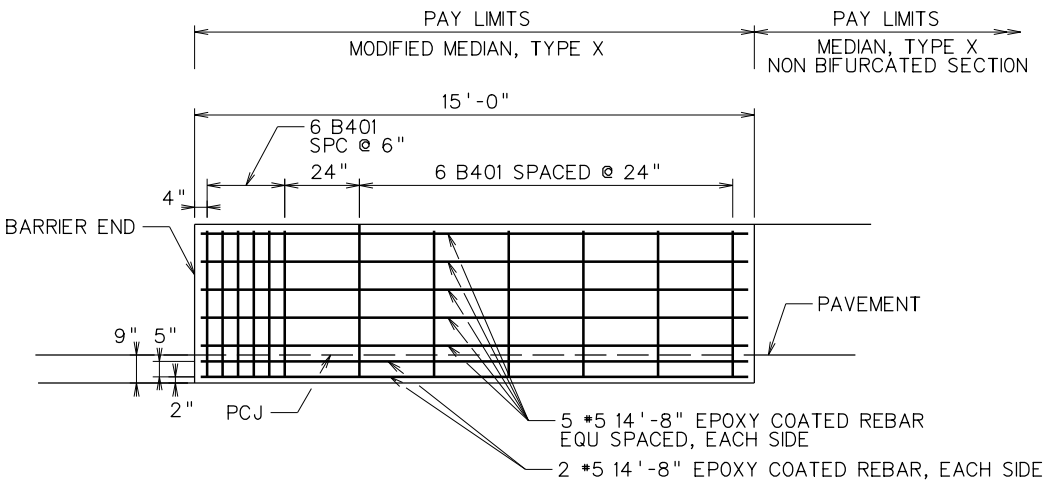
**TYPE X MEDIAN MODIFIED
BIFURCATED SINGLE SLOPE
CONCRETE BARRIER
(ASPHALT PAVEMENTS)**



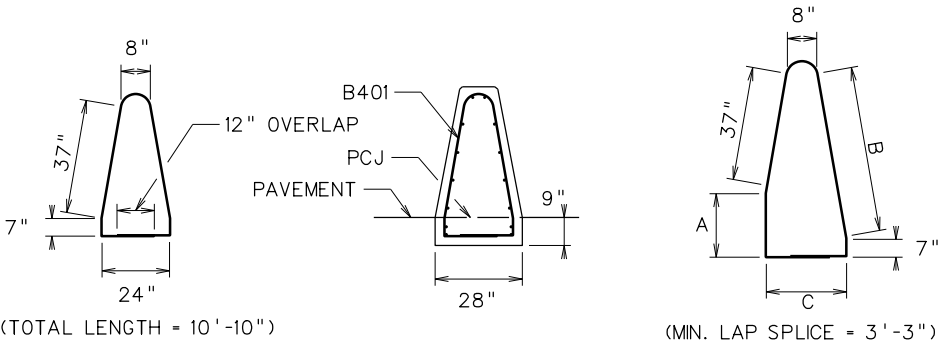
**TYPE X MEDIAN MODIFIED
BIFURCATED SINGLE SLOPE
CONCRETE BARRIER
(CONCRETE PAVEMENTS)**



PAY LMT DETAIL



ELEVATION



**B401 BEND
DIAGRAM**

SECTION

**B401 BEND
DIAGRAM
BIFURCATED**

REINFORCED END ANCHORAGE ARE REQUIRED AT THE ENDS OF CONCRETE BARRIER RUNS. END ANCHORAGE IS ALSO REQUIRED WHEN EXPANSION JOINT SPACING EXCEEDS 800'. AT THESE EXPANSION JOINTS, CONSTRUCT END ANCHORAGE ON BOTH SIDES OF JOINT WITH A 2" JOINT. MAXIMUM EXPANSION JOINT SPACING SHALL BE 800'. THIS DETAIL SHALL NOT BE USED AT CONSTRUCTION JOINTS OR OTHER EXPANSION JOINT LOCATIONS. DIMENSIONS A, B AND C SHALL BE SHOWN IN THE PLANS.

COST OF REBAR AND FILLER MATERIAL SHALL BE INCLUDED IN THE UNIT BID PRICE OF THE "MODIFIED MEDIAN, TYPE X".

**MODIFIED MEDIAN, TYPE X
CONCRETE BARRIER
END ANCHORAGE**

					THE WEST VIRGINIA DEPARTMENT OF TRANSPORTATION		
					DIVISION OF HIGHWAYS		
					TYPE X MEDIAN BARRIER SPECIAL DETAIL (2 OF 2)		
REVISION NUMBER	SHEET NUMBER	REVISION	DATE	BY			