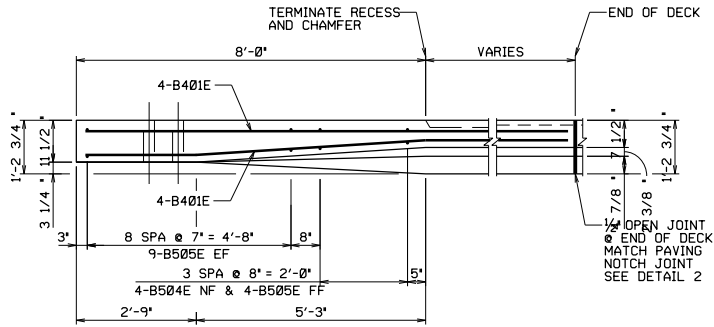
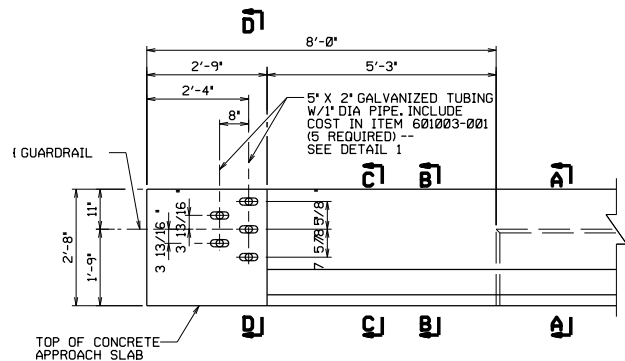


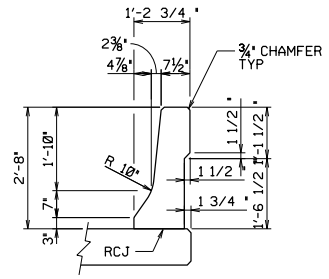
PRINT DATE
14-JUL-2020 06:26



PLAN

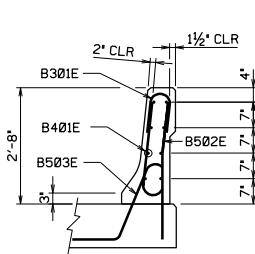


ELEVATION

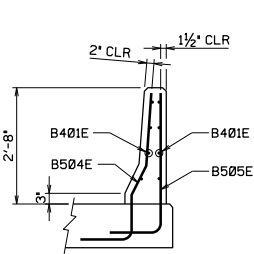


BARRIER DETAIL

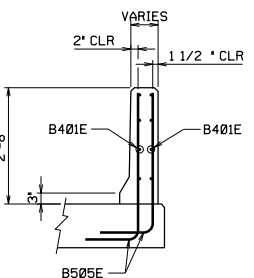
END POSTS ON TOP OF APPROACH SLAB



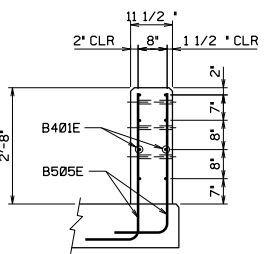
SECTION A-A



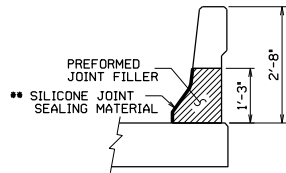
SECTION B-B



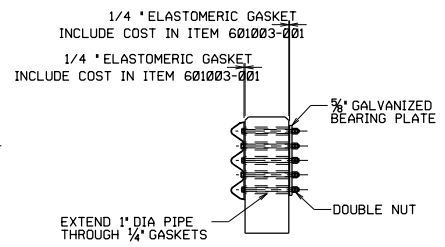
SECTION C-C



SECTION D-D



DETAIL 2



DETAIL 1

** INCLUDE COST IN ITEM, 601003-001, CLASS K CONCRETE

GUARDRAIL CONNECTION:
CONNECT THE THREE BEAM TERMINAL PLATE AND 5/8" BEARING PLATE WITH 3/8" DIA. BOLTS AND TWO NUTS. TIGHTENED FIRST NUT AGAINST BEARING PLATE AND SECOND NUT AGAINST FIRST NUT TO PREVENT NUTS FROM LOOSENING. CENTER THE BOLTS IN THE 5" X 2" TUBING.

ALL GALVANIZATION SHALL BE IN ACCORDANCE WITH AASHTO M232.

NOT TO SCALE

ADDITIONAL DETAILS NEEDED	
SERIES	SHEET NUMBER
1600	

NO.	REVISION	DATE	BY

WEST VIRGINIA DEPARTMENT OF TRANSPORTATION
DIVISION OF HIGHWAYS

DESIGNED BY	DATE	CHECKED	DATE
DRAWN	DATE	REVIEWED	DATE

STANDARD BRIDGE PLANS
**BARRIER TRANSITION
ON APPROACH SLAB**
SHEET NUMBER 1600B4