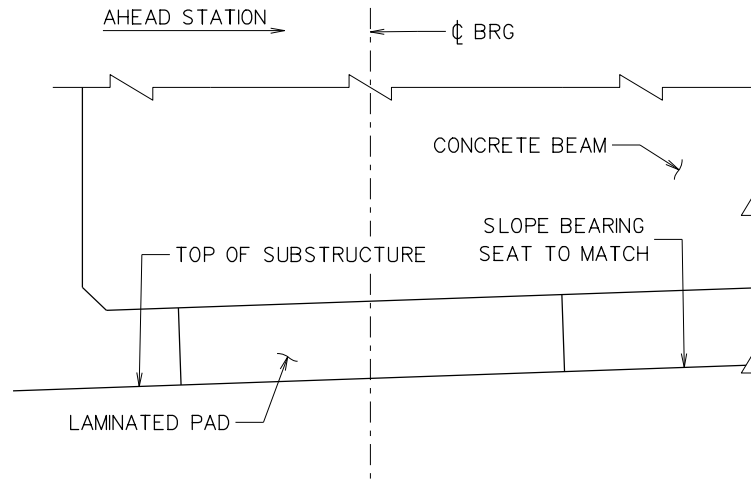
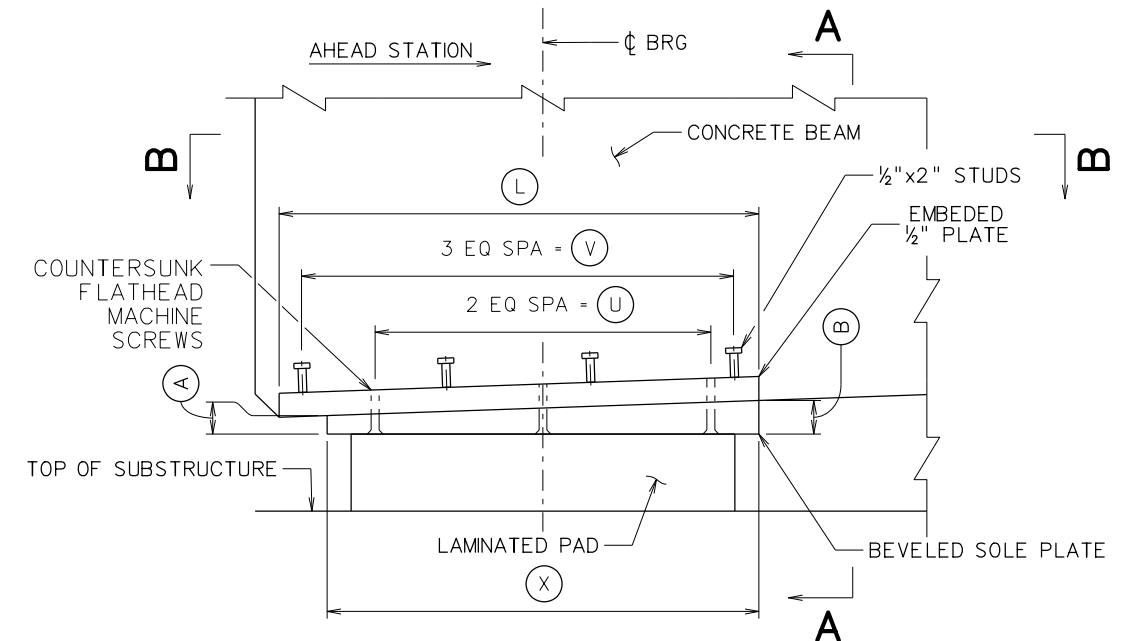


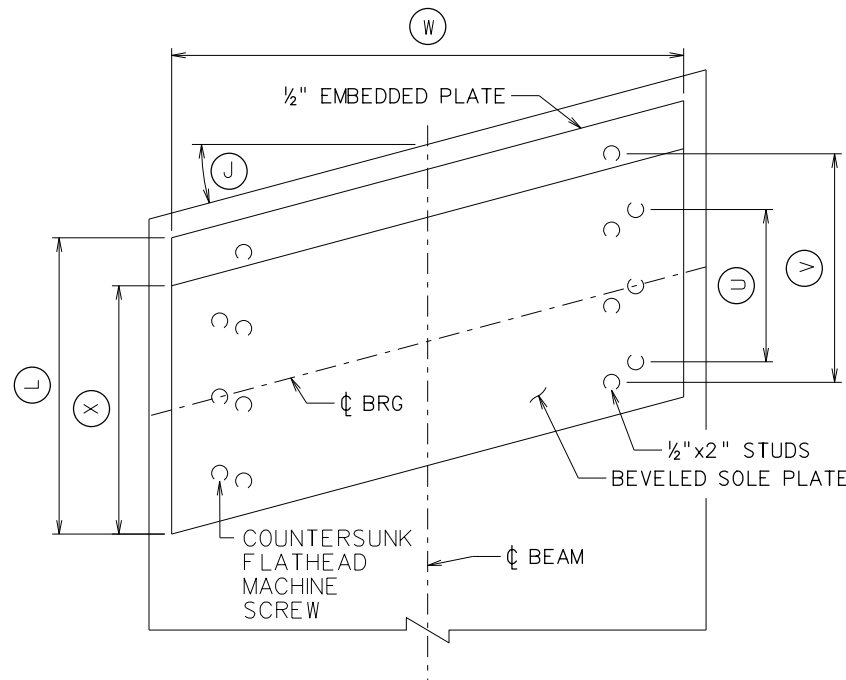
**NON-GUIDED SIDE ELEVATION**  
(SLOPES < 0.50% ALONG BEAM)



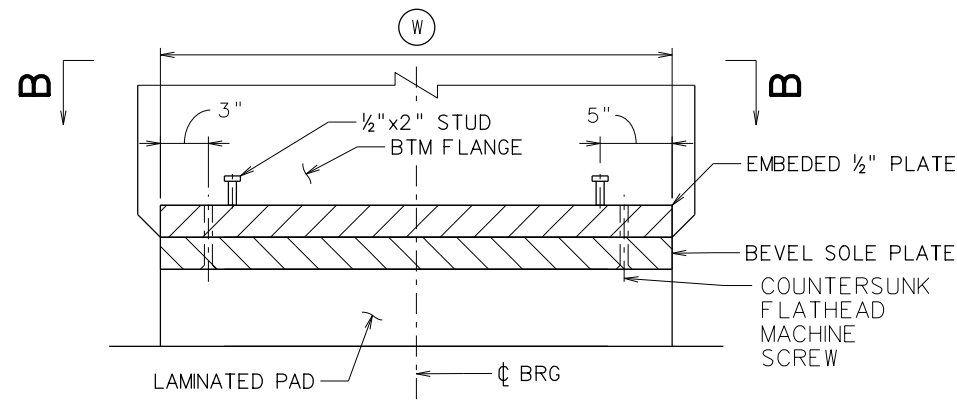
**NON-GUIDED SIDE ELEVATION**  
(SLOPES > 0.50% AND < 2.00% ALONG BEAM)



**NON-GUIDED SIDE ELEVATION**  
(SLOPES > 2.00% ALONG BEAM)



**SECTION B-B**  
(SKEW < 30°)



**SECTION A-A**

**BEARING RESTRAINTS CONTROL DIMENSIONS**

CODE	DESCRIPTION	ABUT 1	PIER 1	PIER 2	ABUT 2
A	PLATE THICKNESS (IN)				
B	PLATE THICKNESS (IN)				
J	SKEW (DEG)				
L	BEVEL PLATE LENGTH (IN)				
W	WIDTH OF PLATES (IN)				
U	END TO END OF BOLTS (IN)				
V	END TO END OF STUDS (IN)				
X	EMBEDDED PLATE LENGTH (IN)				

**NOTES:**

- SPECIAL ATTENTION SHOULD BE GIVEN TO DRAINAGE WHEN SLOPING BEARING SEATS TOWARDS A BACKWALL OR OTHER OBSTRUCTION. SLOPING OF BEARING SEATS AT ABUTMENTS IS FORBIDDEN BELOW DECK JOINTS.
- UNLESS OTHERWISE NOTED, BEARING PLATE AND SOLE PLATES SHALL CONFORM TO AASHTO M270 GRADE 50. AFTER FABRICATION AND BEFORE DRILLING COUNTERSUNK HOLES, THE PLATES SHALL BE HOT-DIP GALVANIZED IN ACCORDANCE WITH AASHTO M111.
- BEVELED SOLE PLATES SHALL HAVE A MINIMUM BEVEL OF 0.01 RADIAN.
- TAP PLATES AFTER GALVANIZATION FOR INSTALLATION OF 1/2" DIAMETER ASTM F 3125, GRADE A325S COUNTERSUNK BOLTS. DRILL BOTH PLATES AS AN ASSEMBLED UNIT. THREAD THE EMBEDDED PLATE ONLY. COVER TAPPED HOLES IN EMBEDDED PLATE AS NEEDED TO AVOID INFILTRATION OF CONCRETE DURING BEAM FABRICATION.
- THE POSITION OF SHEAR STUDS MAY BE MODIFIED AS NEEDED WITH THE ENGINEER'S APPROVAL.
- ALL PLATES SHALL BE THOROUGHLY CLEANED OF ALL FOREIGN MATERIAL IMMEDIATELY PRIOR TO INSTALLATION IN ACCORDANCE WITH STANDARD SPECIFICATIONS. TIGHTEN COUNTERSUNK BOLTS SNUG TIGHT.
- EPOXY GRIT COATING SHALL BE APPLIED TO ALL STEEL SURFACES CONTACTING THE BEARING PAD AND EXTEND TO THE EDGES OF THE STEEL PLATES. THE EPOXY GRIT SHALL BE INSTALLED IN ACCORDANCE WITH THE EPOXY MANUFACTURER'S INSTRUCTIONS. ALLOW THE EPOXY TO FULLY CURE FOR THE MINIMUM TIME RECOMMENDED BY THE MANUFACTURER THEN REMOVE ANY LOOSE GRIT BEFORE BEARING INSTALLATION. EPOXY GRIT SHALL MEET THE REQUIREMENTS OF SSPC AB1 ABRASIVE SPECIFICATIONS #1 - MINERAL & SLAG ABRASIVES, TYPE 2 OR BETTER.

PRINT DATE  
7-FEB-2022 10:24

7-FEB-2022 10:24

NOT TO SCALE

NO.	REVISION	DATE	BY

WEST VIRGINIA DEPARTMENT OF TRANSPORTATION  
DIVISION OF HIGHWAYS

DESIGNED	DATE	CHECKED	DATE
DRAWN	DATE	REVIEWED	DATE

STANDARD BRIDGE PLANS  
**CONCRETE BEAM**  
**NON-GUIDED BEARING RESTRAINTS**  
SHEET NUMBER 1800BR4