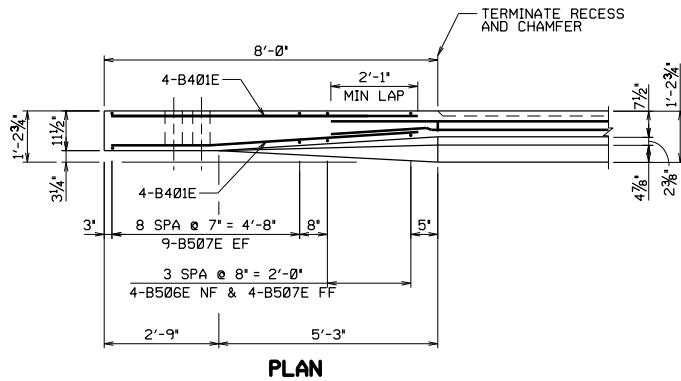
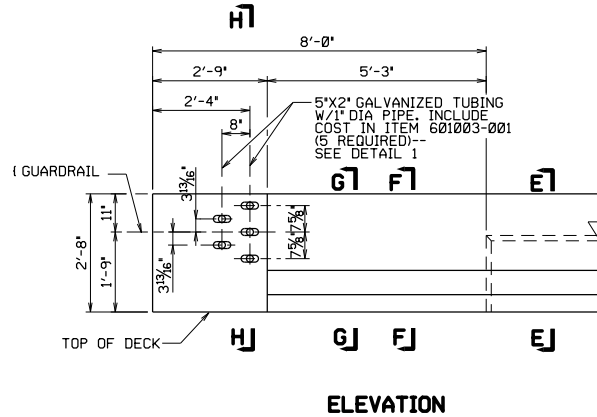


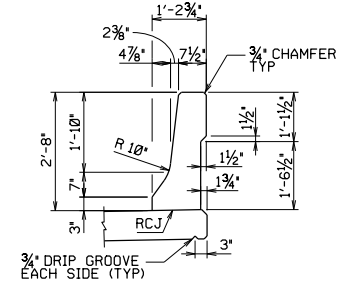
PRINT DATE
14-JUL-2020 06:27



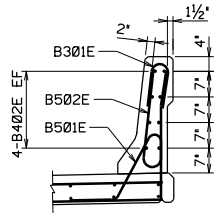
PLAN



ELEVATION



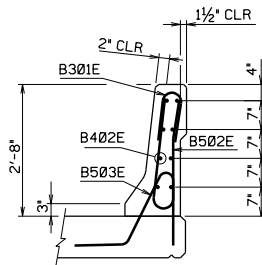
BARRIER DETAIL



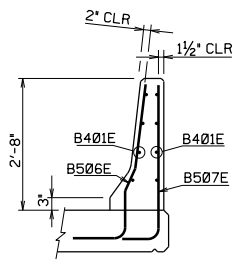
BARRIER REINFORCING

END POSTS ON TOP OF BRIDGE DECK

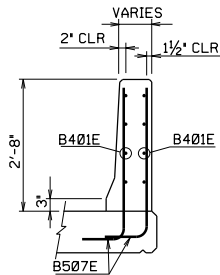
BARRIER ON BRIDGE



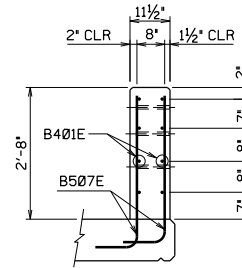
SECTION E-E



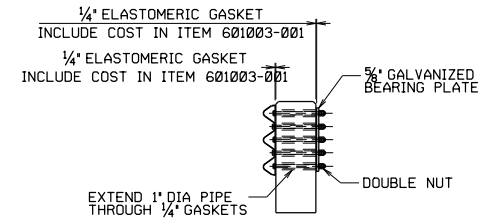
SECTION F-F



SECTION G-G



SECTION H-H



DETAIL 1

GUARDRAIL CONNECTION

CONNECT THE THREE BEAM TERMINAL PLATE AND 5/8" BEARING PLATE WITH 5/8" DIA. BOLTS AND TWO NUTS. TIGHTENED FIRST NUT AGAINST BEARING PLATE AND SECOND NUT AGAINST FIRST NUT TO PREVENT NUTS FROM LOOSENING. CENTER THE BOLTS IN THE 5'x 2' TUBING.

ALL GALVANIZATION SHALL BE IN ACCORDANCE WITH AASHTO M232.

NO.	REVISION	DATE	BY

WEST VIRGINIA DEPARTMENT OF TRANSPORTATION
DIVISION OF HIGHWAYS

DESIGNED BY	DATE	CHECKED	DATE
DRAWN	DATE	REVIEWED	DATE

SPECIAL STANDARD BRIDGE DETAILS
**BARRIER TRANSITION
ON BRIDGE**
SHEET NUMBER 5020BA4