



Department of Administration
 Purchasing Division
 2019 Washington Street East
 Post Office Box 50130
 Charleston, WV 25305-0130

**State of West Virginia
 Solicitation Response**

Proc Folder: 1455101
Solicitation Description: 10-24-C918 Bin Block
Proc Type: Agency Master Agreement

| Solicitation Closes | Solicitation Response | Version |
|---------------------|------------------------------|---------|
| 2024-08-06 14:30 | SR 0803 ESR07302400000000802 | 1 |

VENDOR
 VS0000045058
 Taza Supplies Inc.

Solicitation Number: ARFQ 0803 DOT2500000002
Total Bid: 100925 **Response Date:** 2024-07-30 **Response Time:** 14:22:21
Comments:

FOR INFORMATION CONTACT THE BUYER
 Dusty J Smith
 304-414-6859
 dusty.j.smith@wv.gov

Vendor Signature X **FEIN#** **DATE**

All offers subject to all terms and conditions contained in this solicitation

| Line | Comm Ln Desc | Qty | Unit Issue | Unit Price | Ln Total Or Contract Amount |
|------|--|-----------|------------|------------|-----------------------------|
| 1 | 2' x 2' x 6' Bin Block with lifting anchor | 200.00000 | EA | 330.000000 | 66000.00 |

| Comm Code | Manufacturer | Specification | Model # |
|-----------|--------------|---------------|---------|
| 30103619 | | | |

Commodity Line Comments:

Extended Description:

2' x 2' x 6' Bin Block with lifting anchor

| Line | Comm Ln Desc | Qty | Unit Issue | Unit Price | Ln Total Or Contract Amount |
|------|--|----------|------------|------------|-----------------------------|
| 2 | 2' x 2' x 3' Bin Block with lifting anchor | 50.00000 | EA | 242.500000 | 12125.00 |

| Comm Code | Manufacturer | Specification | Model # |
|-----------|--------------|---------------|---------|
| 30103619 | | | |

Commodity Line Comments:

Extended Description:

2' x 2' x 3' Bin Block with lifting anchor

| Line | Comm Ln Desc | Qty | Unit Issue | Unit Price | Ln Total Or Contract Amount |
|------|---|----------|------------|------------|-----------------------------|
| 3 | 2' x 2' x 5' Left Bin Block with lifting anchor | 30.00000 | EA | 380.000000 | 11400.00 |

| Comm Code | Manufacturer | Specification | Model # |
|-----------|--------------|---------------|---------|
| 30103619 | | | |

Commodity Line Comments:

Extended Description:

2' x 2' x 5' Left Bin Block with lifting anchor

| Line | Comm Ln Desc | Qty | Unit Issue | Unit Price | Ln Total Or Contract Amount |
|------|--|----------|------------|------------|-----------------------------|
| 4 | 2' x 2' x 5' Right Bin Block with lifting anchor | 30.00000 | EA | 380.000000 | 11400.00 |

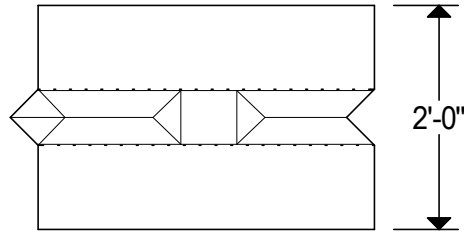
| Comm Code | Manufacturer | Specification | Model # |
|-----------|--------------|---------------|---------|
| 30103619 | | | |

Commodity Line Comments:

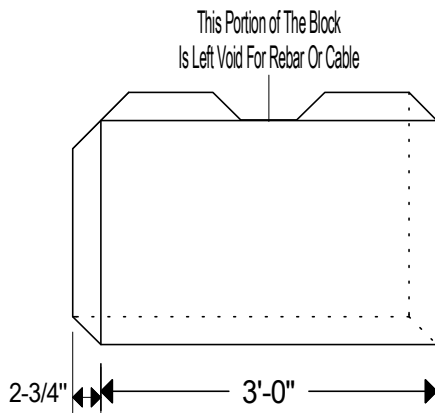
Extended Description:

2' x 2' x 5' Right Bin Block with lifting anchor

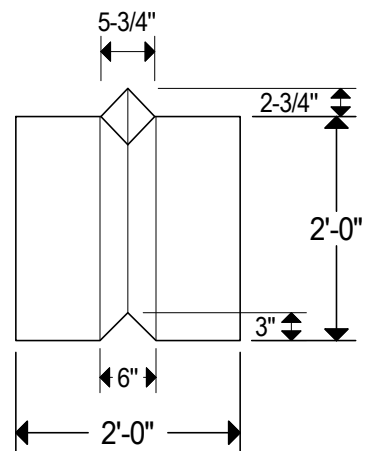
Plan



Elevation



Side View Elevation



Notes:

Lifting Plan - Use Rebar Or Cable.

Weight - 1,800 lbs.



3.0'x 2.0'x 2.0' O.D. Half Bin Block Detail

(V - Wedge)

No Scale

Specs sheet

6' V-Wedge: 6L x 2W x 2H (V-Wedge Style)

5' Corner Block: 5'L x 2'W x 2'H (V-Wedge Style)

Corner Block

5' Corner Block: 5'L x 2'W x 2'H (V-Wedge Style)

Corner Block

3' V-Wedge: 3'L x 2'W x 2'H (V-Wedge Style)







DANGER
HIGH VOLTAGE