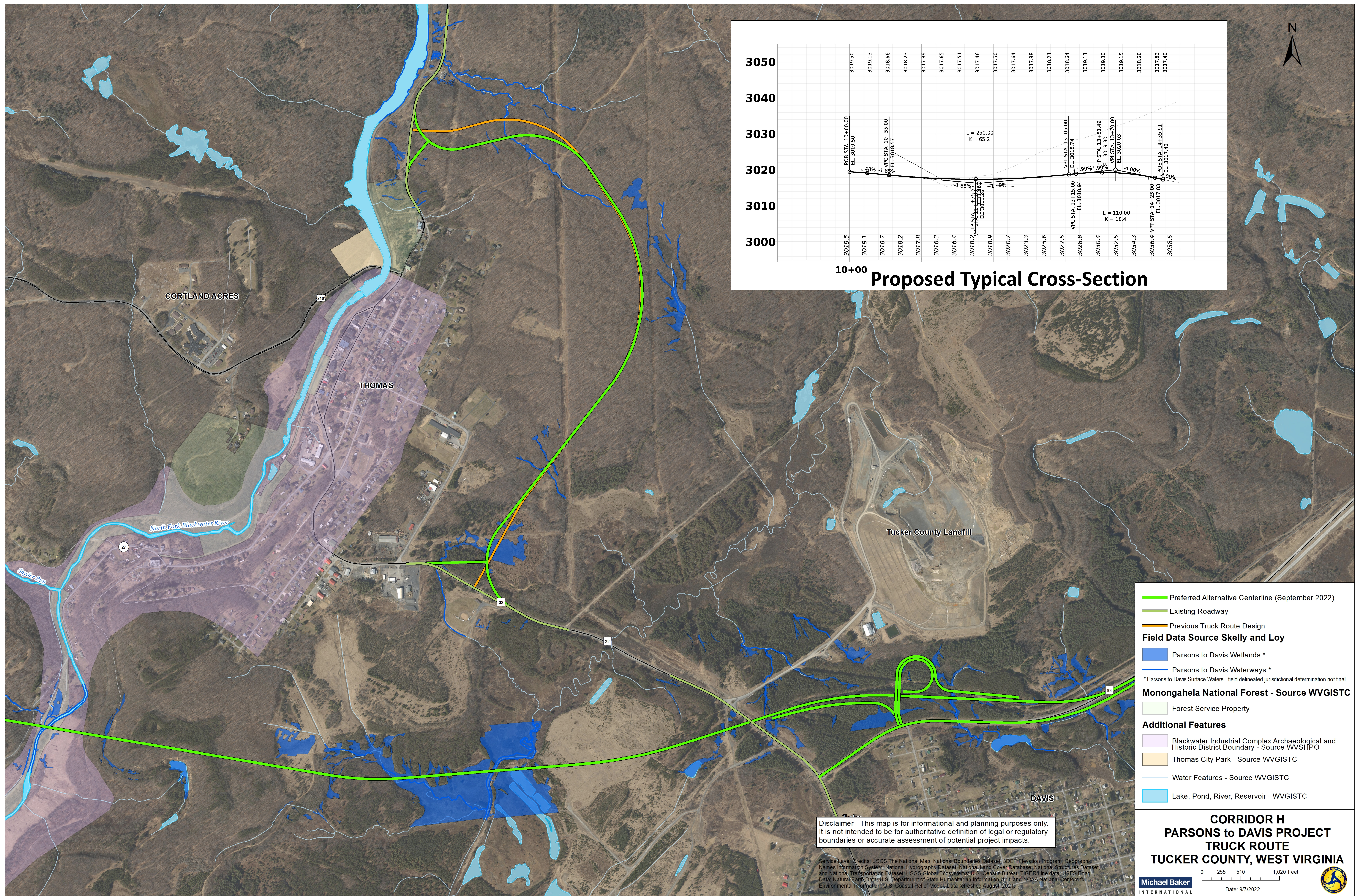


IMPROVED TRUCK ROUTE



Disclaimer - This map is for informational and planning purposes only. It is not intended to be for authoritative definition of legal or regulatory boundaries or accurate assessment of potential project impacts.

Service Layer Credits: USGS The National Map, National Boundaries Dataset, 3DEP Elevation Program, Geographic Names Information System, National Hydrography Dataset, National Land Cover Database, National Structures Dataset, and National Transportation Dataset; USGS Global Ecosystems; U.S. Census Bureau TIGER/Line data; USFS Road Data; Natural Earth Data; U.S. Department of State Humanitarian Information Unit; and NOAA National Centers for Environmental Information; U.S. Coastal Relief Model; Data refreshed August 2021.

**CORRIDOR H
PARSONS TO DAVIS PROJECT
TRUCK ROUTE
TUCKER COUNTY, WEST VIRGINIA**

Michael Baker INTERNATIONAL
Date: 9/7/2022

