

**Appalachian Corridor H
Parsons-to-Davis SFEIS**

Exhibit II-1

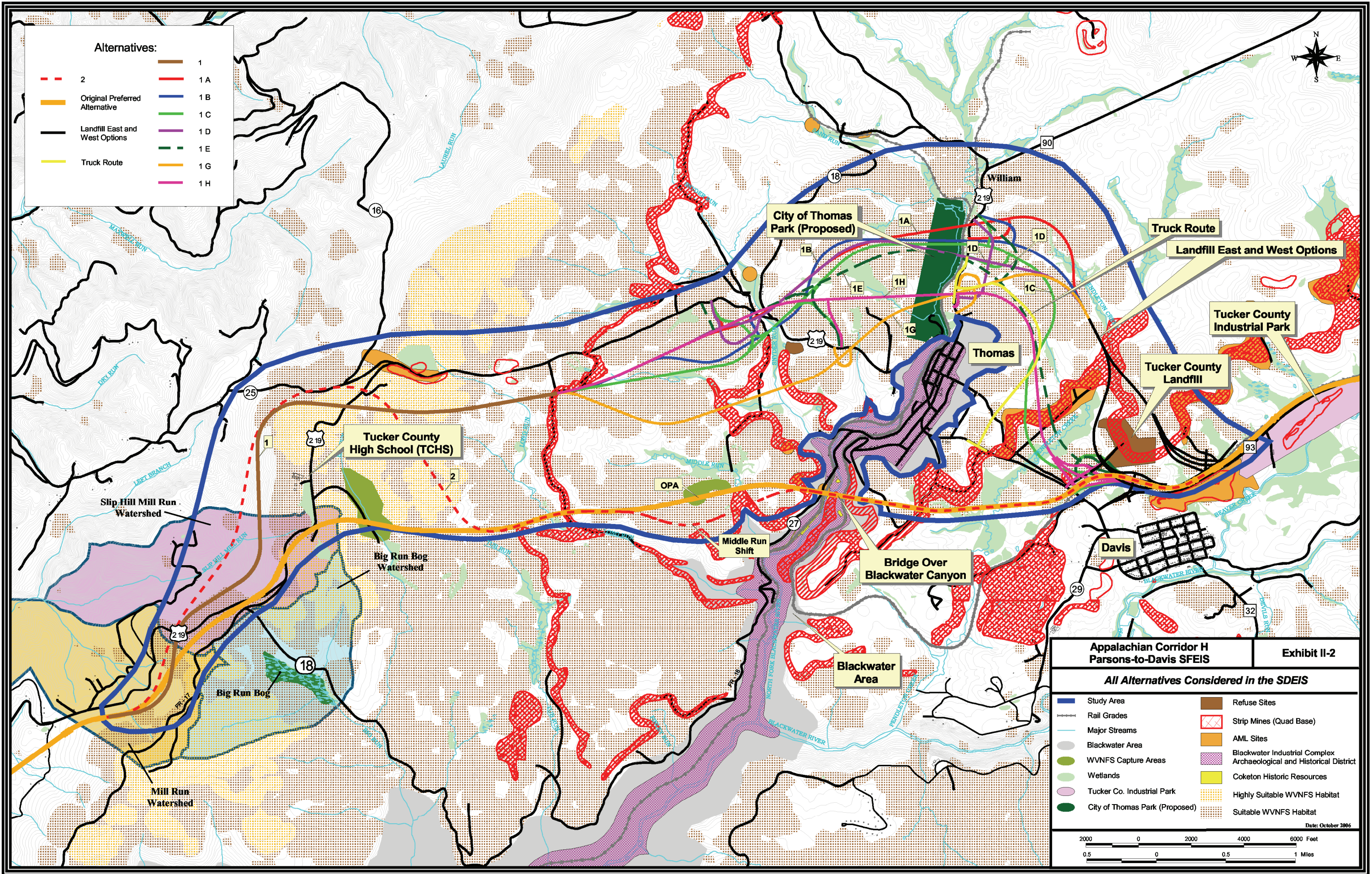
**Baseline Environmental Constraints
and No-Build Alternative**

Study Area	Refuse Sites
No-Build Alternative	Strip Mines (Quad Base)
Rail Grades	AML Sites
Major Streams	Blackwater Industrial Complex Archaeological and Historical District
Blackwater Area	Coketon Historic Resources
WVNFS Capture Areas	Highly Suitable WVNFS Habitat
Wetlands	Suitable WVNFS Habitat
Tucker Co. Industrial Park	
City of Thomas Park (Proposed)	

Date: October 2006

2000 0 2000 4000 6000 Feet

0.5 0 0.5 1 Miles



Alternatives:

--- 2	1
Original Preferred Alternative	1 A
Landfill East and West Options	1 B
Truck Route	1 C
	1 D
	1 E
	1 G
	1 H

**Appalachian Corridor H
Parsons-to-Davis SFEIS**

Exhibit II-2

All Alternatives Considered in the SFEIS

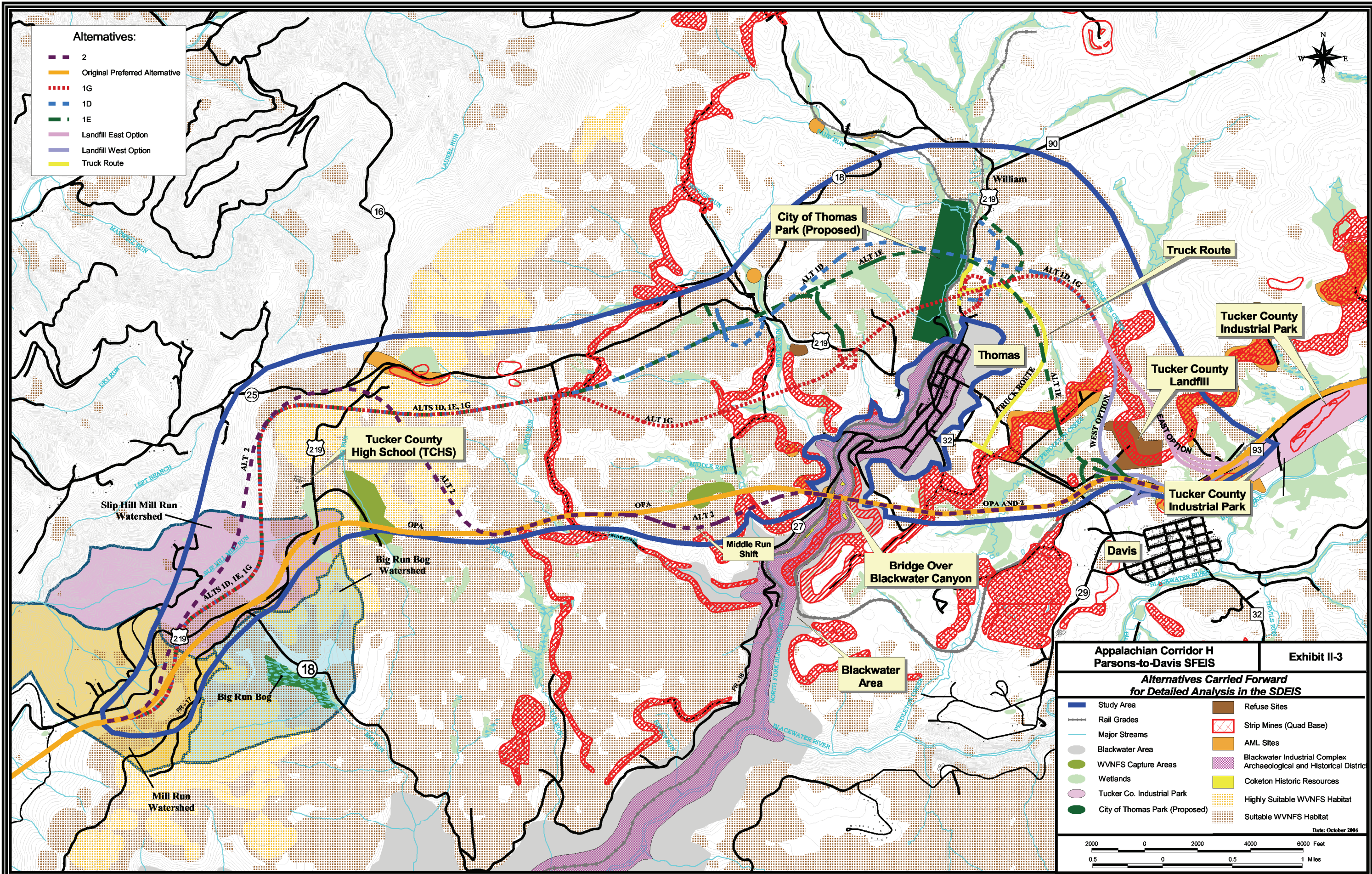
Study Area	Refuse Sites
Rail Grades	Strip Mines (Quad Base)
Major Streams	AML Sites
Blackwater Area	Blackwater Industrial Complex
WVNFS Capture Areas	Archaeological and Historical District
Wetlands	Coketon Historic Resources
Tucker Co. Industrial Park	Highly Suitable WVNFS Habitat
City of Thomas Park (Proposed)	Suitable WVNFS Habitat

Date: October 2006

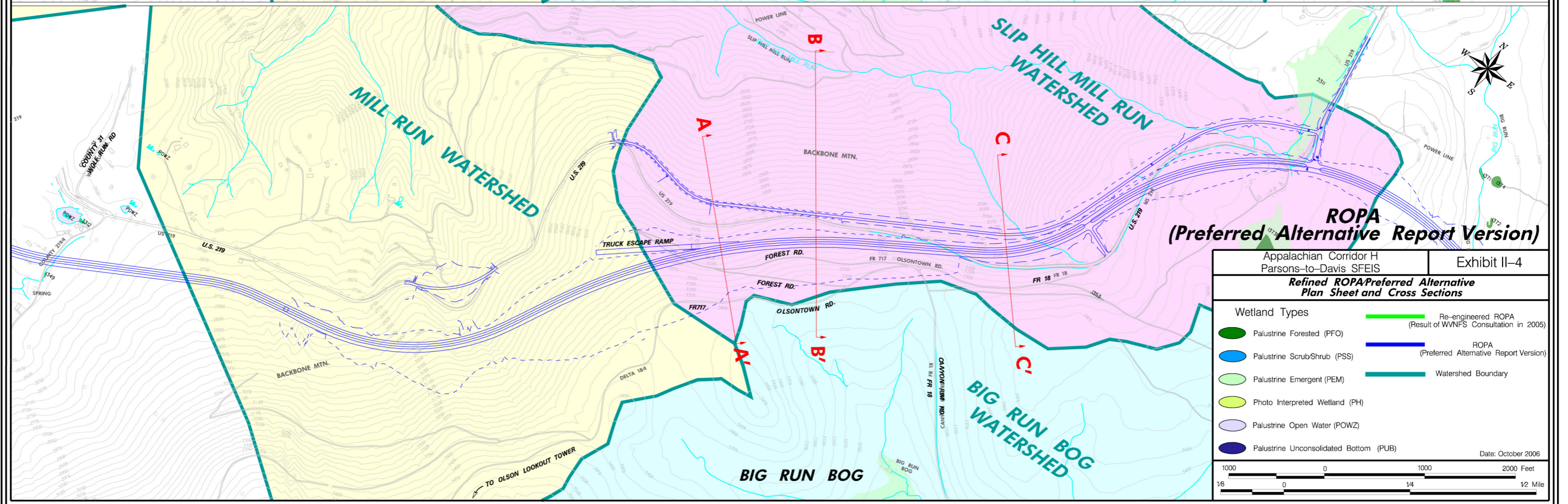
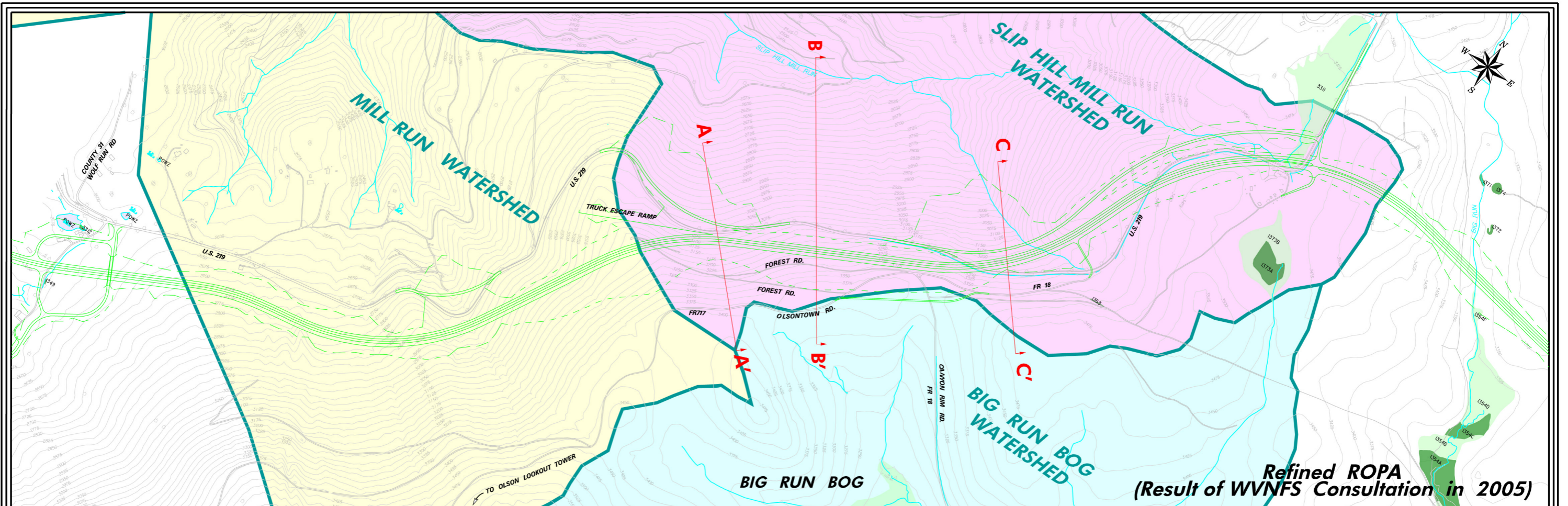
2000 0 2000 4000 6000 Feet
0.5 0 0.5 1 Miles

Alternatives:

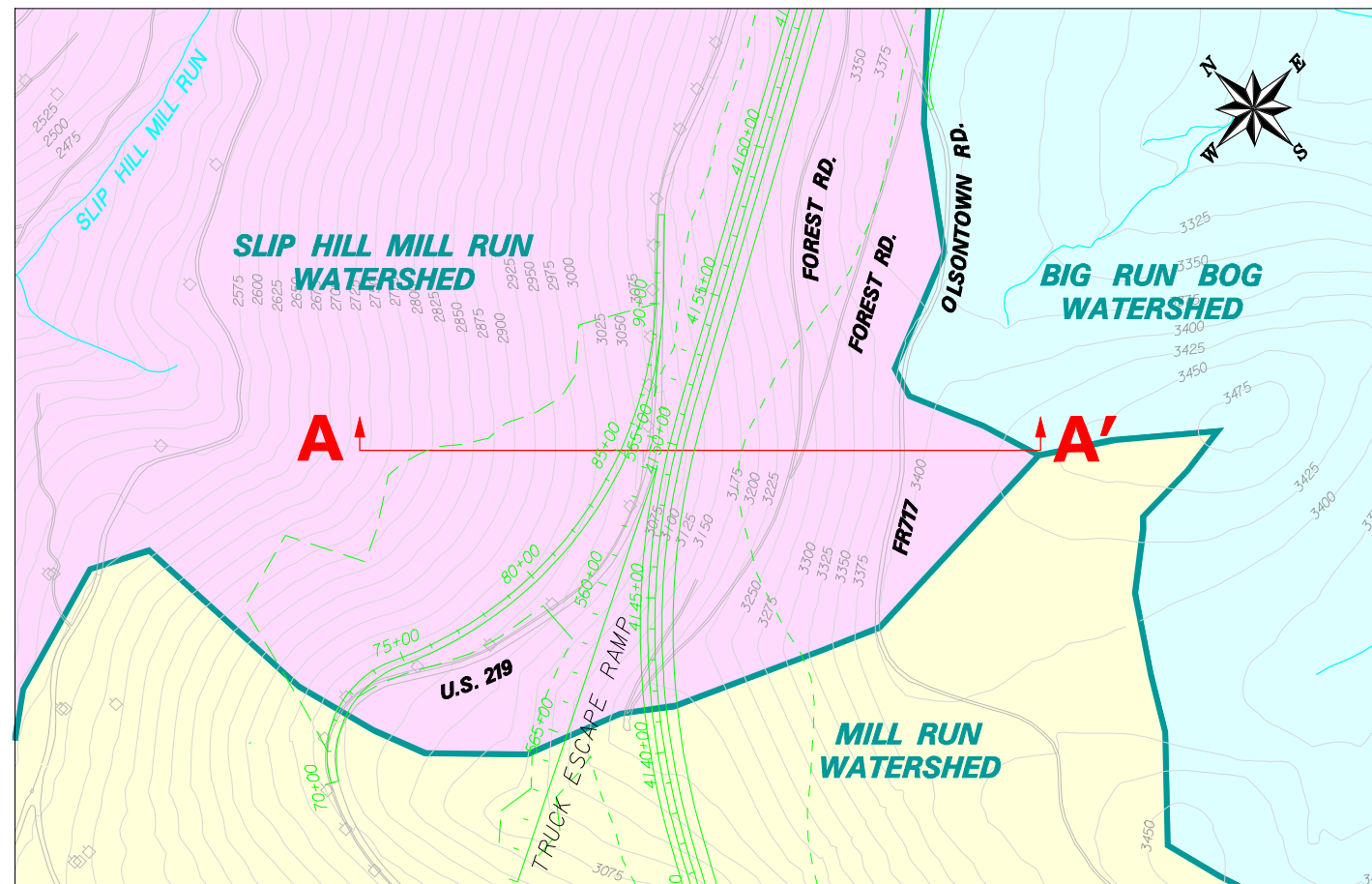
- 2
- Original Preferred Alternative
- - - 1G
- - - 1D
- - - 1E
- Landfill East Option
- Landfill West Option
- Truck Route



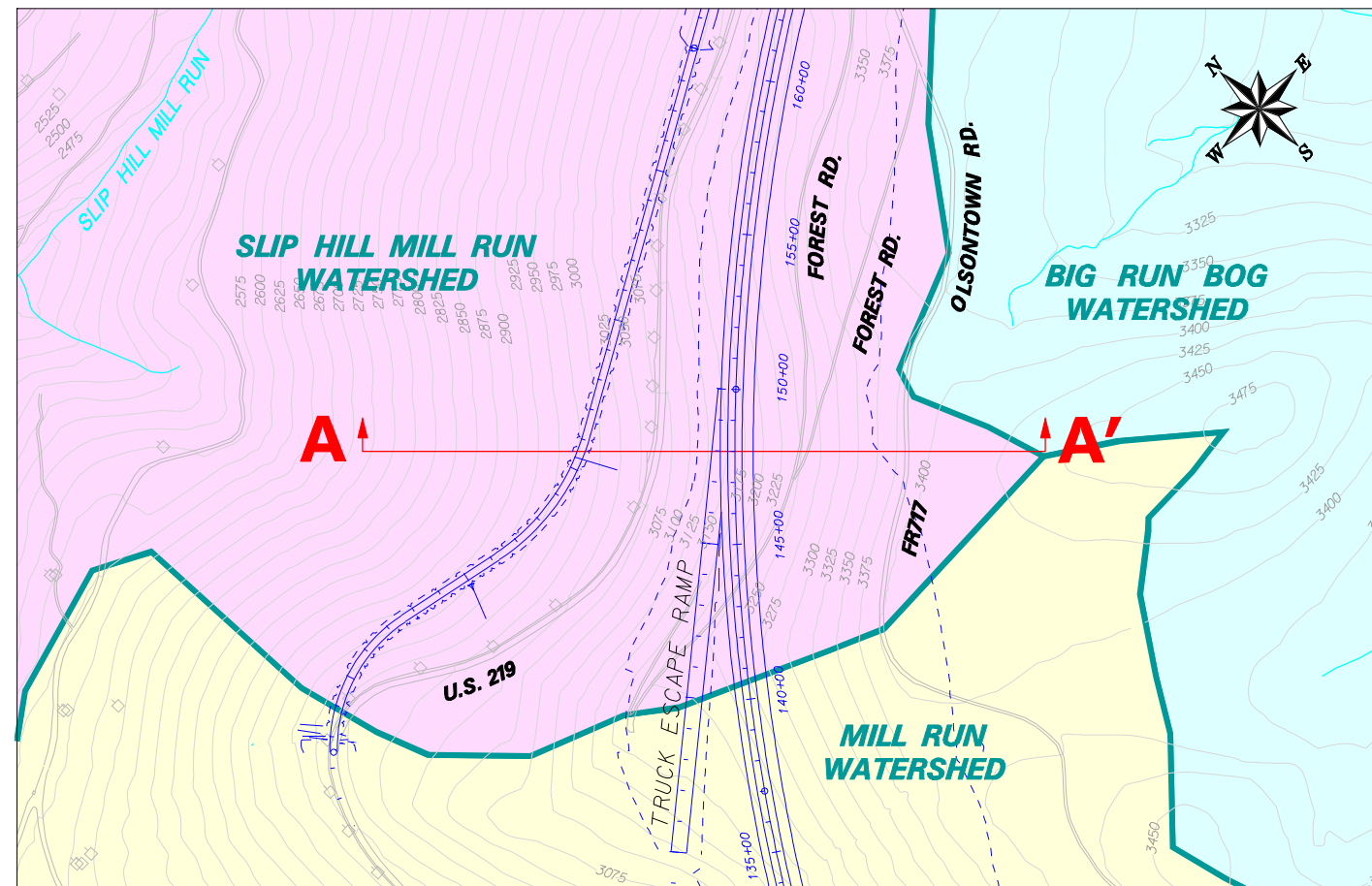
Appalachian Corridor H Parsons-to-Davis SFEIS		Exhibit II-3
<i>Alternatives Carried Forward for Detailed Analysis in the SDEIS</i>		
<ul style="list-style-type: none"> — Study Area - - - Rail Grades — Major Streams Blackwater Area WVNS Capture Areas Wetlands Tucker Co. Industrial Park City of Thomas Park (Proposed) 	<ul style="list-style-type: none"> Refuse Sites Strip Mines (Quad Base) AML Sites Blackwater Industrial Complex Archaeological and Historical District Coketon Historic Resources Highly Suitable WVNS Habitat Suitable WVNS Habitat 	
Date: October 2006		
<div style="display: flex; justify-content: space-between; align-items: center;"> <div style="text-align: center;"> <p>2000 0 2000 4000 6000 Feet</p> <p>0.5 0 0.5 1 Miles</p> </div> </div>		



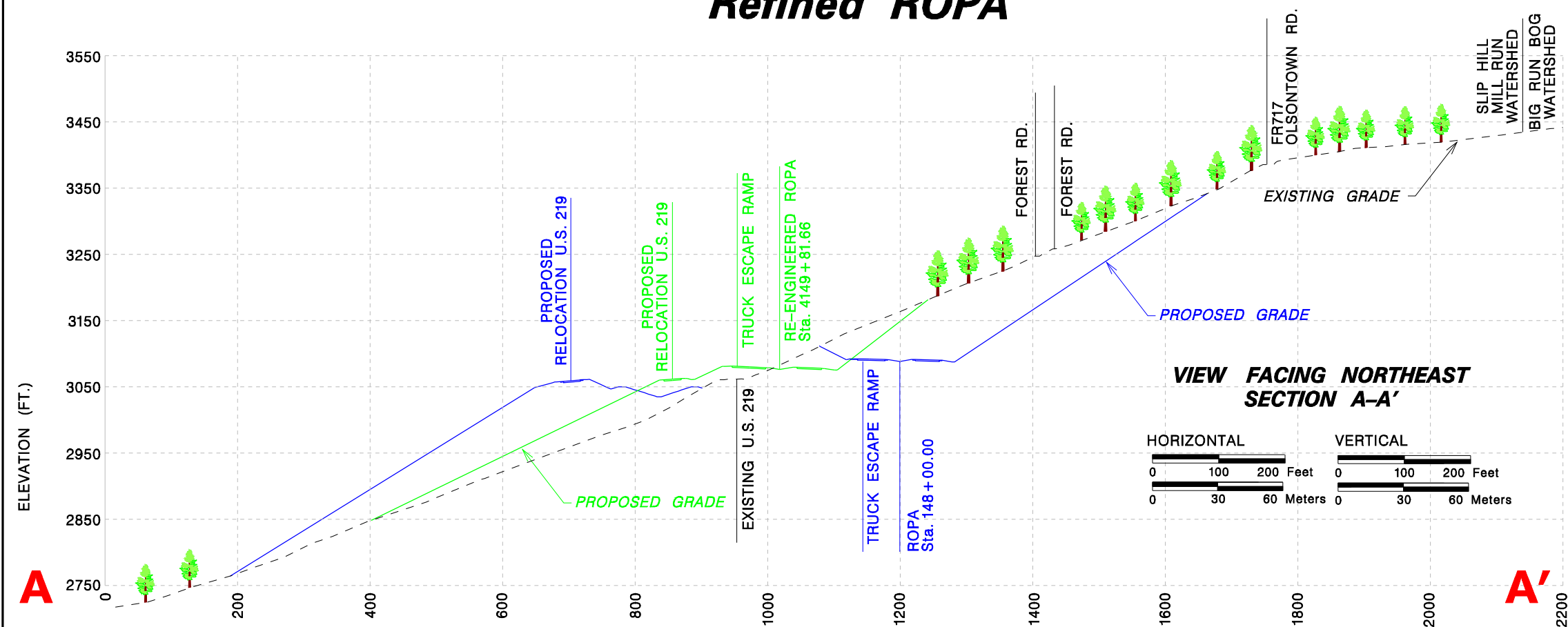
Appalachian Corridor H Parsons-to-Davis SFEIS		Exhibit II-4
Refined ROPA Preferred Alternative Plan Sheet and Cross Sections		
Wetland Types		
Palustrine Forested (PFO)	Re-engineered ROPA (Result of WVNFS Consultation in 2005)	
Palustrine Scrub/Shrub (PSS)	ROPA (Preferred Alternative Report Version)	
Palustrine Emergent (PEM)	Watershed Boundary	
Photo Interpreted Wetland (PH)		
Palustrine Open Water (POWZ)		
Palustrine Unconsolidated Bottom (PUB)		
Date: October 2006		



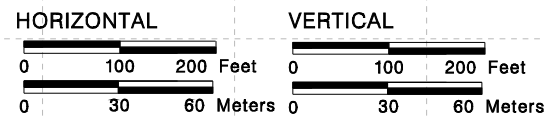
Refined ROPA



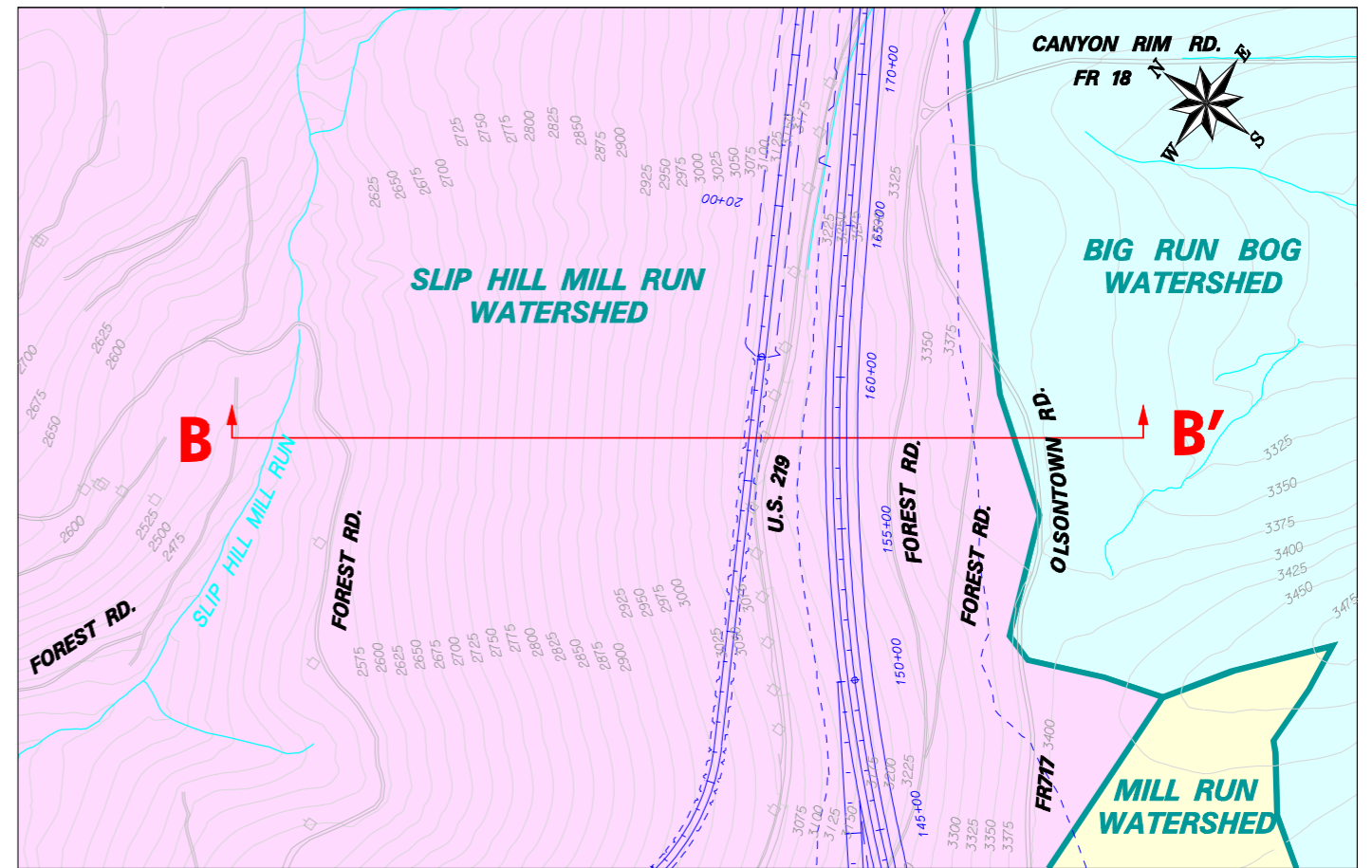
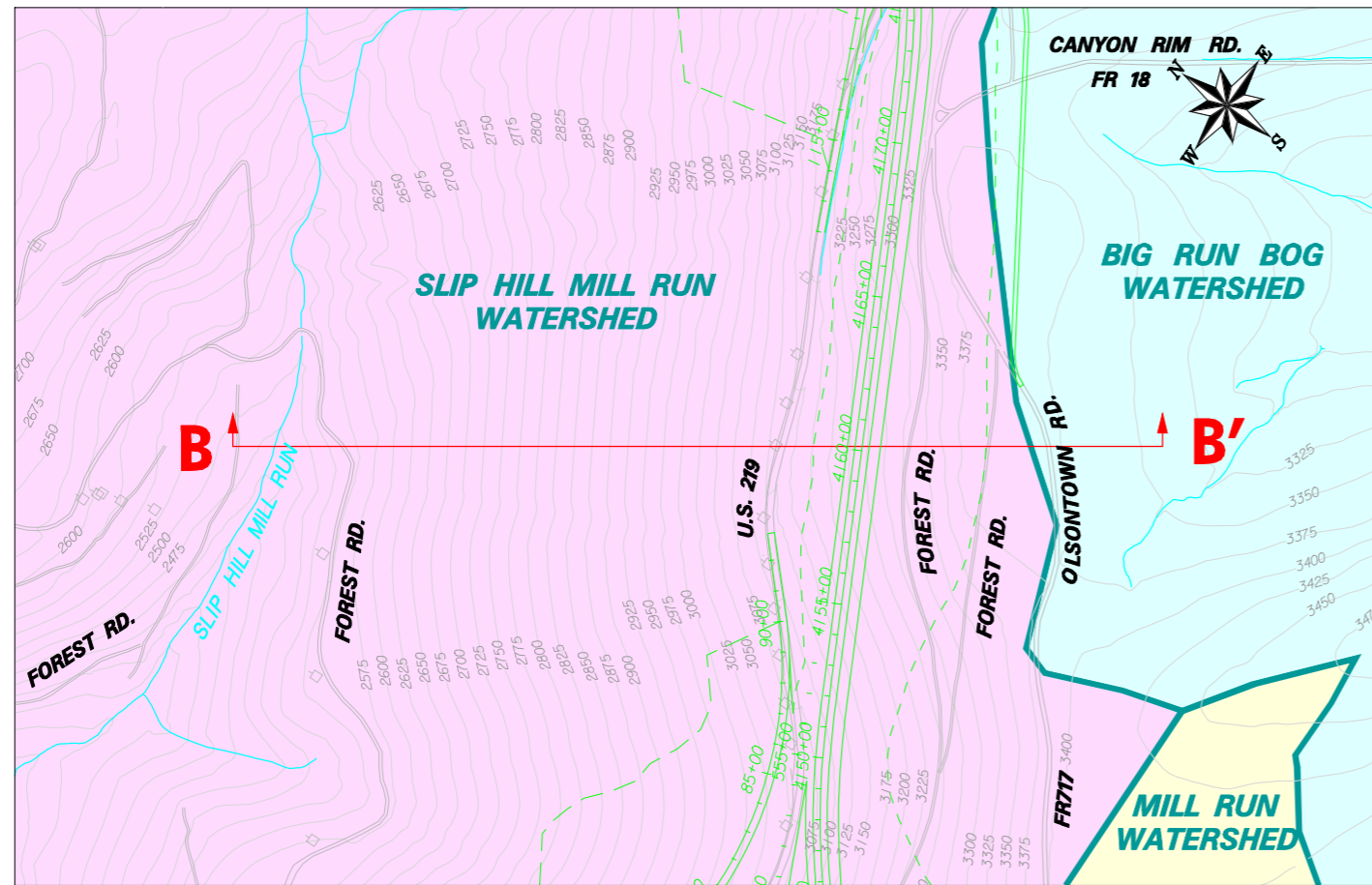
ROPA



**VIEW FACING NORTHEAST
SECTION A-A'**

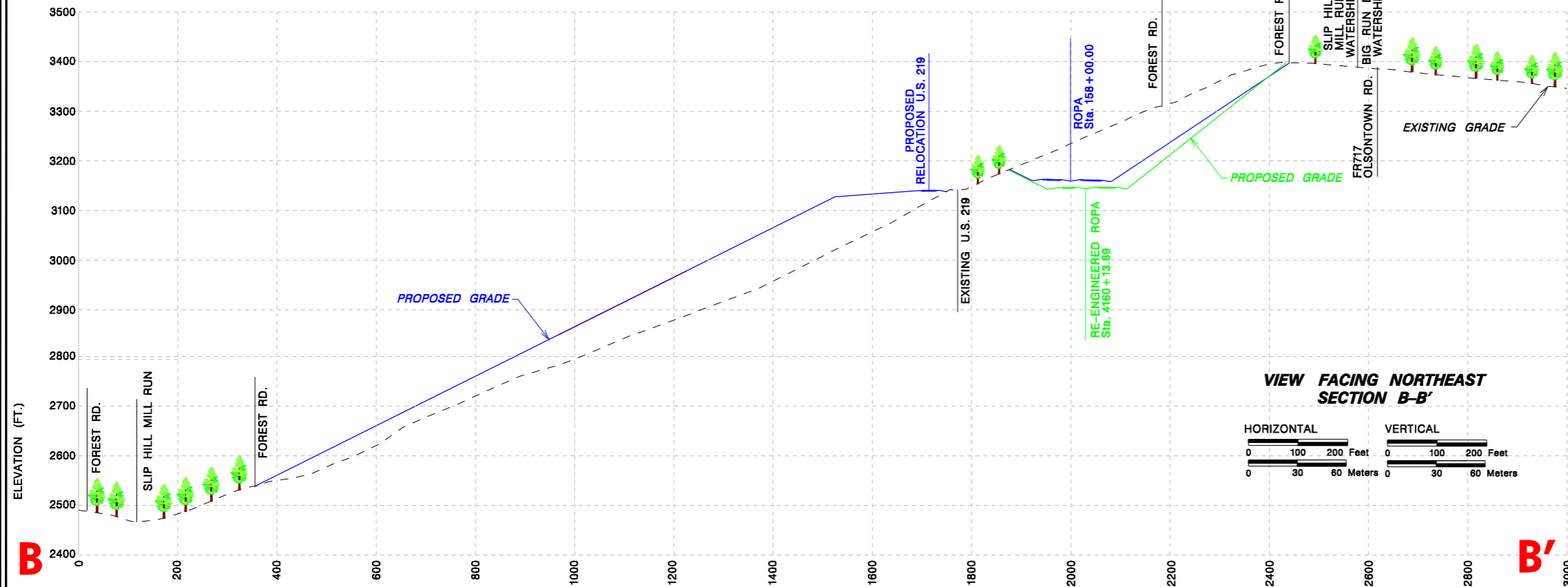


Appalachian Corridor H Parsons-to-Davis SFEIS		Exhibit II-4a
Refined ROPA Preferred Alternative Plan Sheet and Cross Sections		
	Refined ROPA	
	ROPA	
	Watershed Boundary	
	Section Reference	
	Existing Grade	
Date: October 2006		

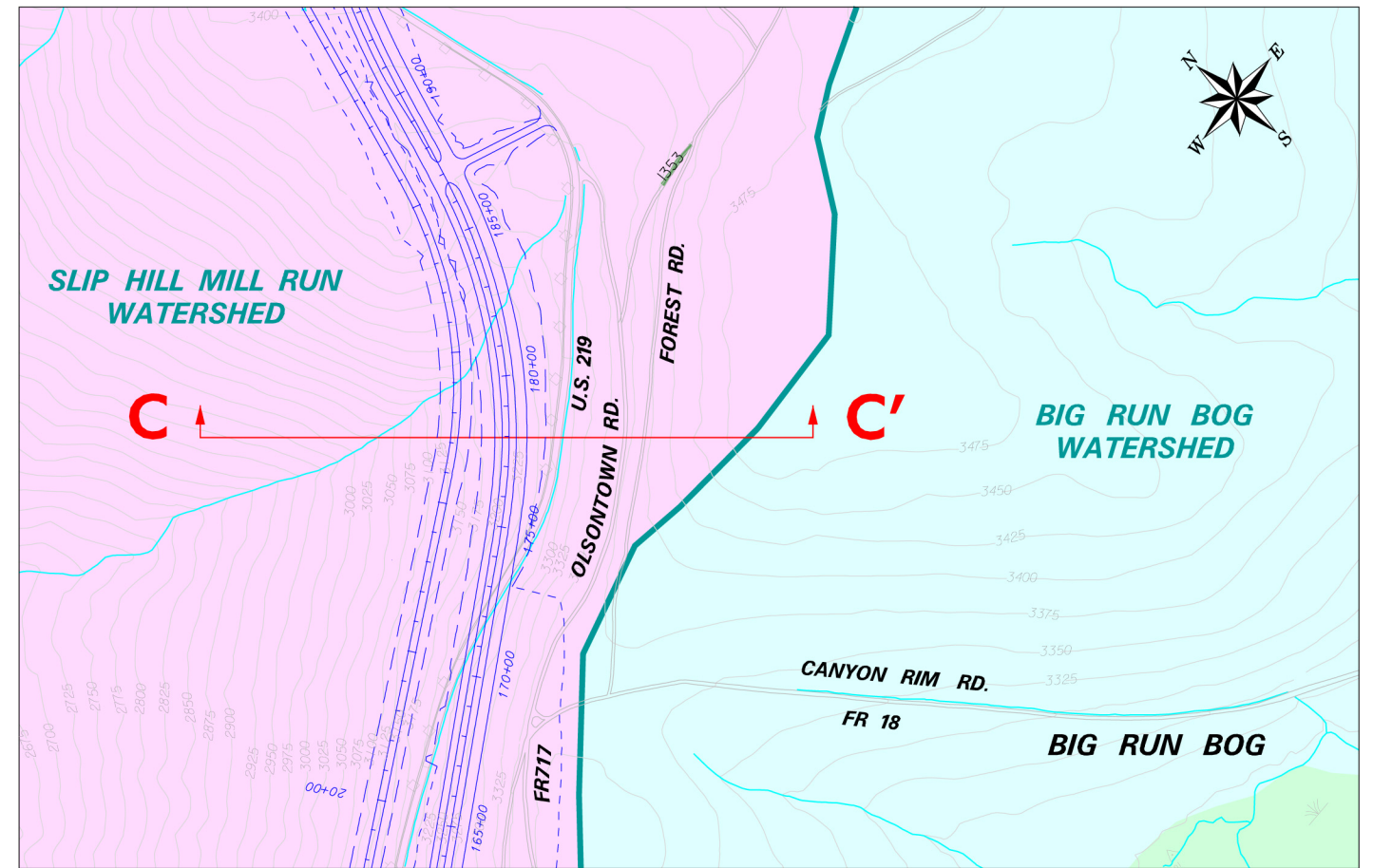
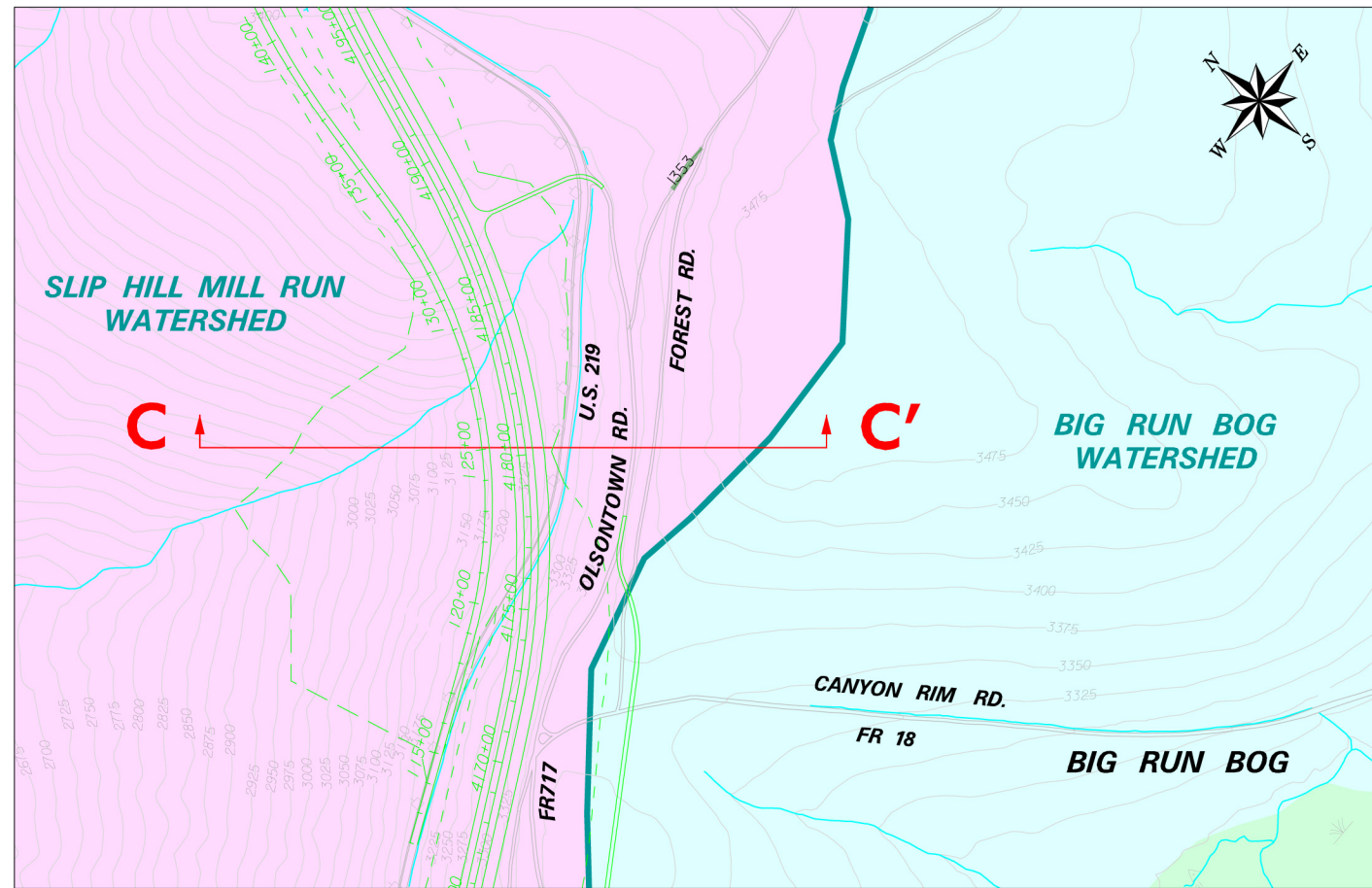


Refined ROPA

ROPA

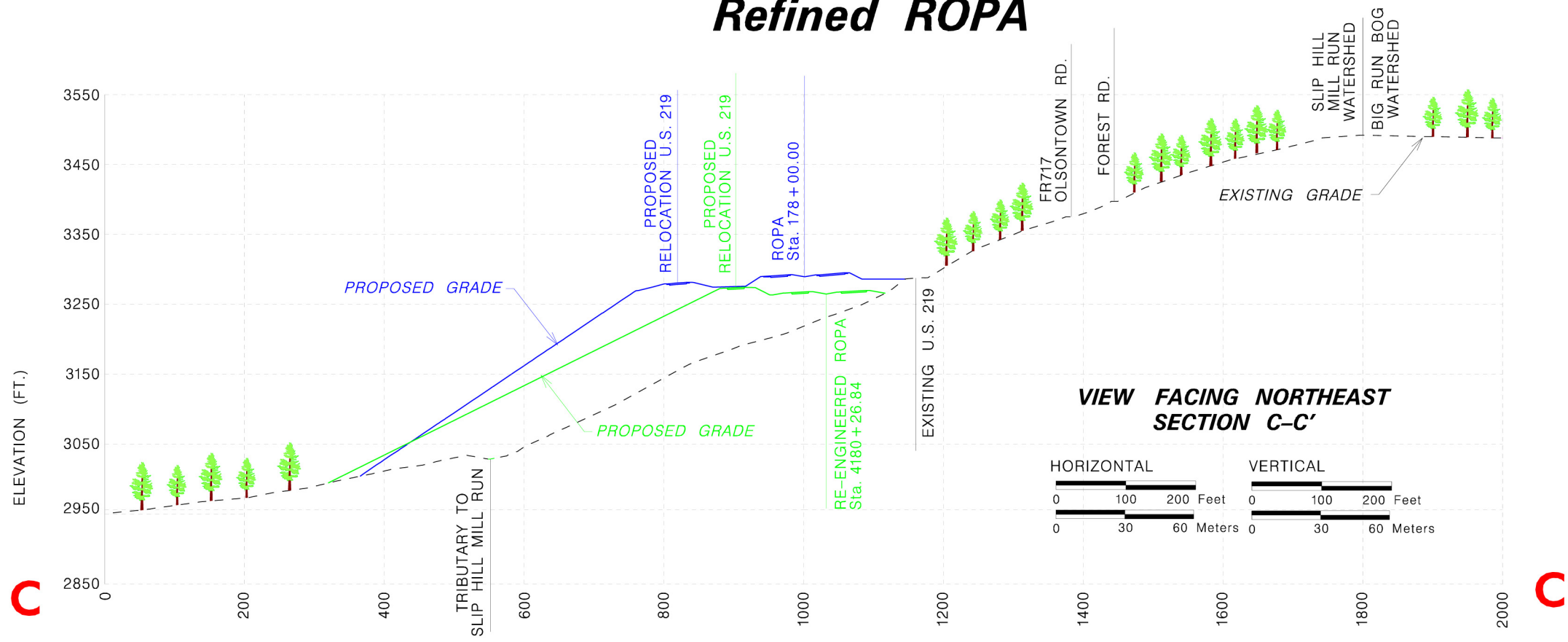


Appalachian Corridor H Parsons-to-Davis SFEIS		Exhibit II-4b
Refined ROPA Preferred Alternative Plan Sheet and Cross Sections		
	Refined ROPA	
	ROPA	
	Watershed Boundary	
	Section Reference	
	Existing Grade	
Date: October 2006		

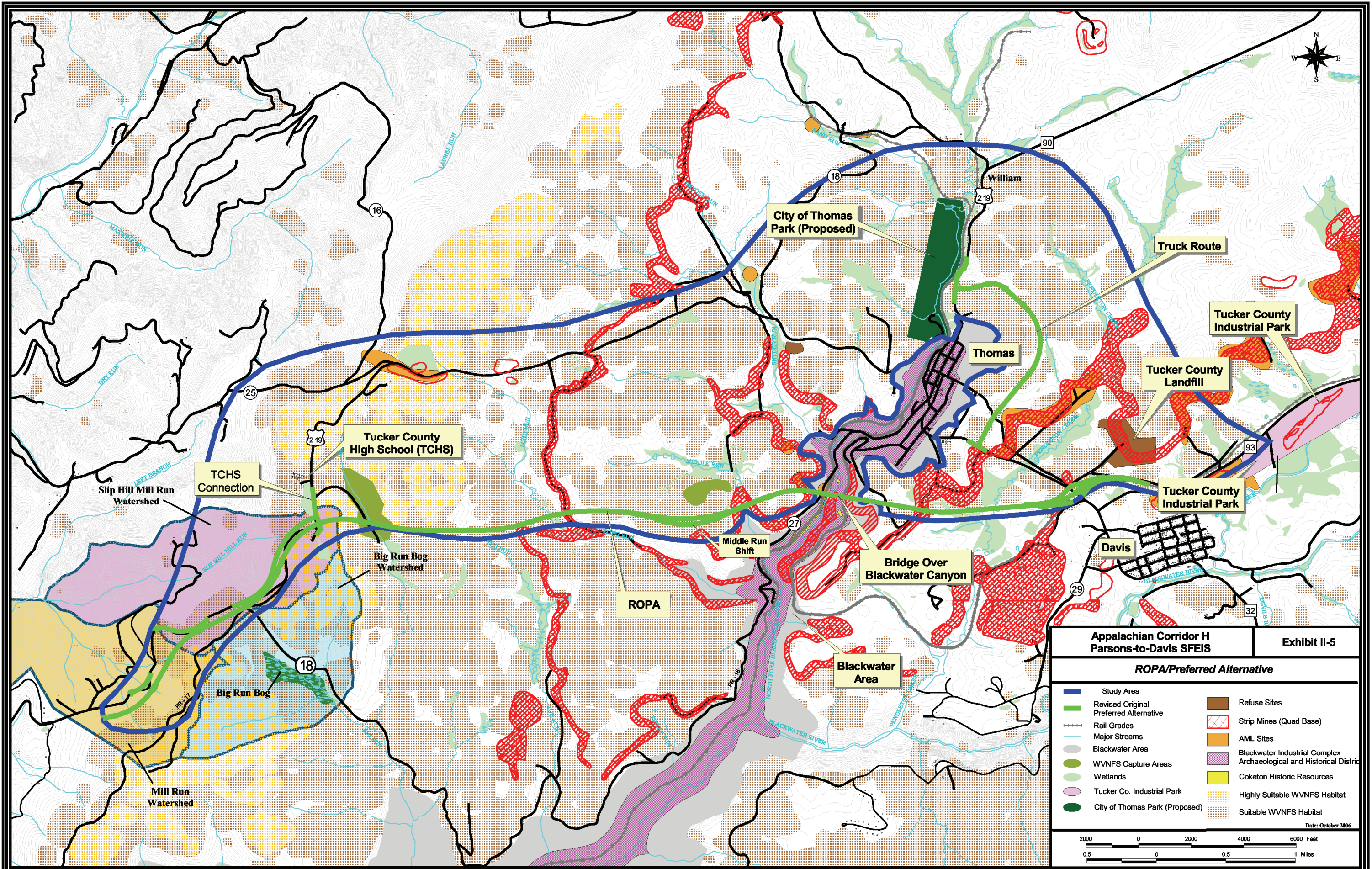


Refined ROPA

ROPA



Appalachian Corridor H Parsons-to-Davis SFEIS	Exhibit II-4c
Refined ROPA Preferred Alternative Plan Sheet and Cross Sections	
	Refined ROPA
	ROPA
	Watershed Boundary
	Section Reference
	Existing Grade
Date: October 2006	
300 0 300 600 Feet	



Appalachian Corridor H Parsons-to-Davis SFEIS		Exhibit II-5
ROPA/Preferred Alternative		
Study Area	Refuse Sites	Strip Mines (Quad Base)
Revised Original Preferred Alternative	AML Sites	Blackwater Industrial Complex Archaeological and Historical District
Rail Grades	Coketon Historic Resources	Highly Suitable WVNFS Habitat
Major Streams	Wetlands	Suitable WVNFS Habitat
Blackwater Area	Tucker Co. Industrial Park	
WVNFS Capture Areas	City of Thomas Park (Proposed)	

Date: October 2006

2000 0 2000 4000 6000 Feet

0.5 0 0.5 1 Miles