



Making the Connection: Transportation Planning and Project Development

West Virginia Planning Conference

October 27, 2010

Dan Thomas, PE - North Carolina DOT

Today's Topics

- **The Transportation Planning Process**
- **Integration**
- **Keys to Success**
- **Related Initiatives**



**Land Use
Planning
and
Community
Vision**

**Transportation
Planning**

**Project
Planning
(NEPA)**

**Information on important resources
and how to obtain information**

**Develop
CTP
Vision**

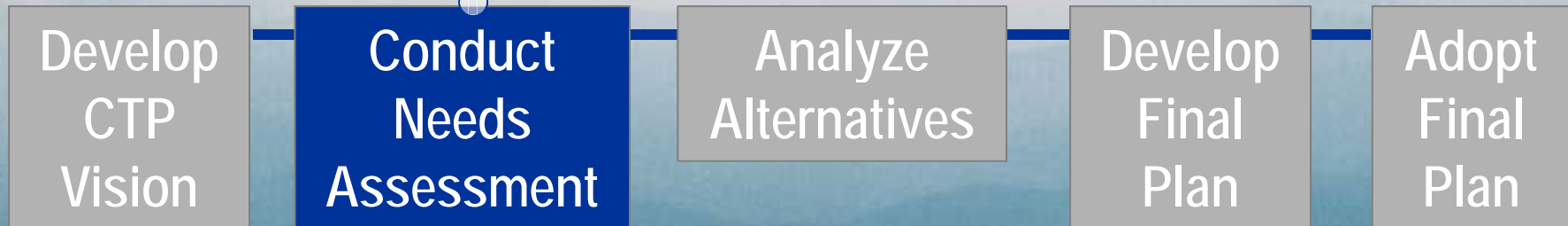
Conduct
Needs
Assessment

Analyze
Alternatives

Develop
Final
Plan

Adopt
Final
Plan

Provide data and information



**Review and comment on
transportation alternatives**

Develop
CTP
Vision

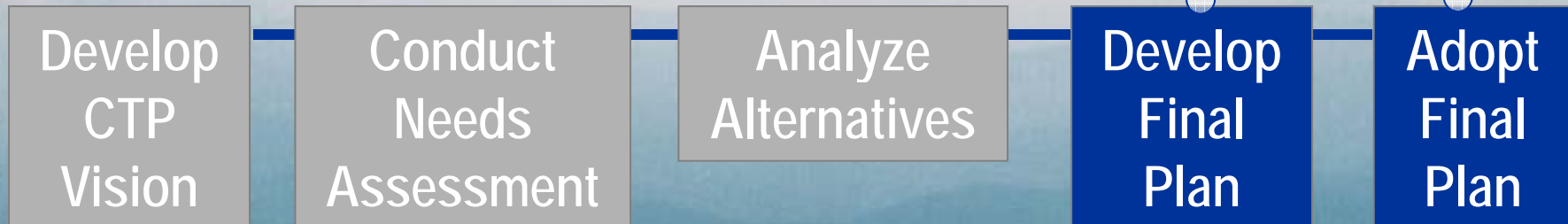
Conduct
Needs
Assessment

Analyze
Alternatives

Develop
Final
Plan

Adopt
Final
Plan

- **Provide comments on final long range transportation plan**
- **Local and State adoption but NOT environmental agencies**

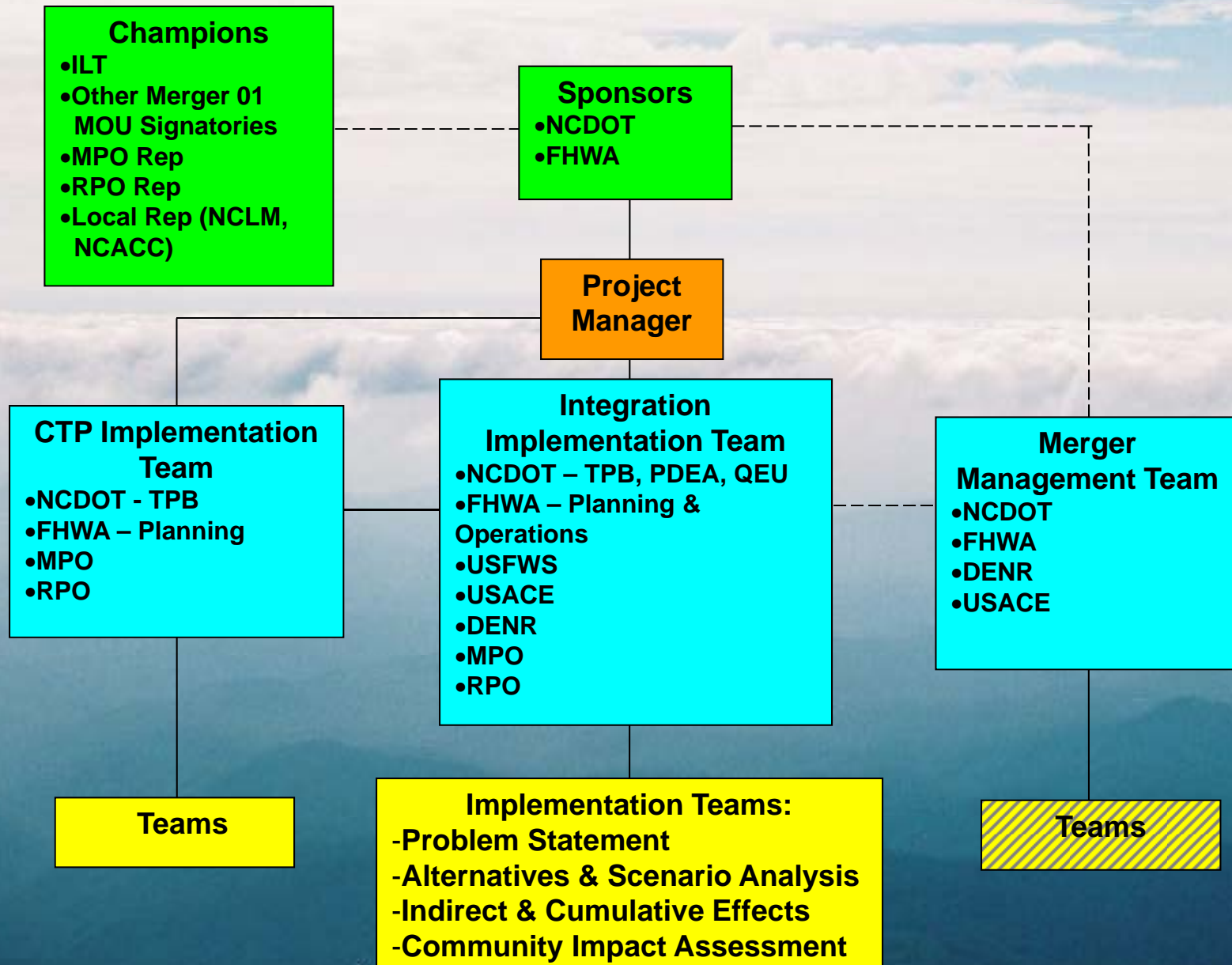


Integration

A planning process that provides a seamless connection between long-range transportation planning and project development that ultimately leads to supporting the timely delivery of projects by NCDOT.

- Enables a seamless transfer of information about transportation needs and environmental and community considerations
- Allows appropriate decisions to be upheld
- Meets legal requirements
- Consistent with the spirit of the Merger process (NEPA)

Integration Accountability Structure



8 Integration Linkages

CTP

Project Development

Problem Statement → Purpose & Need

Alternatives Analysis → Alternatives Analysis

Unreasonable Solutions → Alternatives Selected for
Detailed Study

Multi-modal Analysis → Multi-modal Alternatives

8 Integration Linkages

(continued)

CTP

Project Development

Community Impact
Assessment



Community Impact Analysis

Land Use



Indirect & Cumulative Effects

Public Involvement



Public Involvement

Mitigation Opportunities



Mitigation Needs &
Opportunities

Keys to Success

- **Involve environmental agencies in process development**
- **Ongoing education and communication**
- **Up-to-date statewide GIS coverage**
- **Mechanism for documentation, sharing of information, and providing comments**

Related Initiatives

- **Project Streamlining**
- **GIS Pilot Projects**
- **Complete Streets**

www.nccompletestreets.org

Contact Information

Dan Thomas – danthomas@ncdot.gov
www.ncdot.org/doh/preconstruct/tpb/