

80,000 LB ROUTES

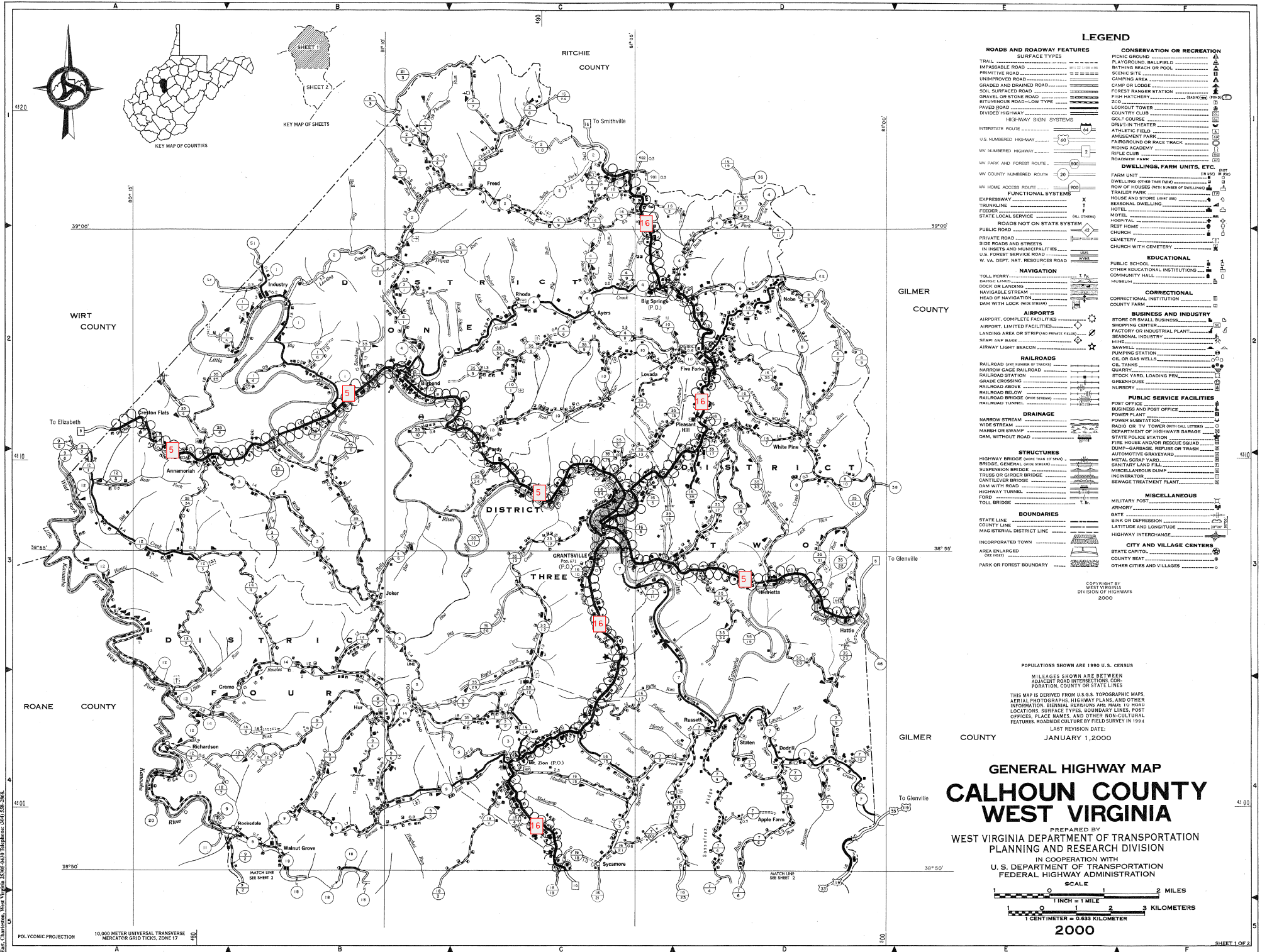


ALL OTHER ROUTES 65,000 LB

JUNE 2004

FOR QUESTIONS CONCERNING
GROSS WEIGHT LOAD LIMITS, CONTACT
WEST VIRGINIA DIVISION OF HIGHWAYS
PROGRAM PLANNING AND
ADMINISTRATION DIVISION
(304) 558-9580 OR
DOT.GROSSWEIGHT@WV.GOV

Copies of this map are available to the public and to government agencies as a
transmission medium. Information on this map is derived from the following sources:
U.S. Department of Transportation, Bureau of Transportation Statistics, 2000 Census of
Roads, Characteristics, West Virginia (2000-44-50) Telephone: (304) 558-3888.



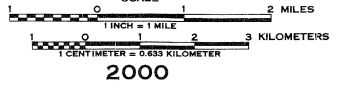
LEGEND

- ROADS AND ROADWAY FEATURES**
 - TRAIL
 - IMPASSABLE ROAD
 - PRIMITIVE ROAD
 - UNIMPROVED ROAD
 - GRAVEL AND DRAINED ROAD
 - SOIL SURFACED ROAD
 - GRAVEL OR STONE ROAD
 - BITUMINOUS ROAD - LOW TYPE
 - PAVED ROAD
 - DIVIDED HIGHWAY
 - HIGHWAY SIGN SYSTEMS
 - INTERSTATE ROUTE
 - U.S. NUMBERED HIGHWAY
 - WV NUMBERED HIGHWAY
 - WV PARK AND FOREST ROUTE
 - WV COUNTY NUMBERED ROUTE
 - WV HOME ACCESS ROUTE
 - EXPRESSWAY
 - TRUNKLINE
 - FEEDER
 - STATE LOCAL SERVICE
 - PRIVATE ROAD
 - SIDE ROADS AND STREETS
 - IN INSETS AND MUNICIPALITIES
 - U.S. FOREST SERVICE ROAD
 - W. VA. DEPT. NAT. RESOURCES ROAD
- FUNCTIONAL SYSTEMS**
 - TRUNKLINE
 - FEEDER
 - STATE LOCAL SERVICE
- ROADS NOT ON STATE SYSTEM**
 - PRIVATE ROAD
 - SIDE ROADS AND STREETS
 - IN INSETS AND MUNICIPALITIES
 - U.S. FOREST SERVICE ROAD
 - W. VA. DEPT. NAT. RESOURCES ROAD
- NAVIGATION**
 - TOLL FERRY
 - RAILROAD
 - DOCK OR LANDING
 - HEAD OF NAVIGATION
 - DAM WITH LOCK (W/STRAVE)
- AIRPORTS**
 - AIRPORT, COMPLETE FACILITIES
 - AIRPORT, LIMITED FACILITIES
 - LANDING AREA OR STRIP (ASPH/GRV/CLD)
 - SEAPLANE BASE
 - AIRWAY LIGHT BEACON
- RAILROADS**
 - RAILROAD (W/ NUMBER OF TRAINS)
 - NARROW GAGE RAILROAD
 - RAILROAD STATION
 - RAILROAD CROSSING
 - RAILROAD ABOVE
 - RAILROAD BELOW
 - RAILROAD BRIDGE (OVER STREAM)
 - RAILROAD TUNNEL
- DRAINAGE**
 - NARROW STREAM
 - WIDE STREAM
 - DEPARTMENT OF HIGHWAYS GARAGE
 - STATE POLICE STATION
 - FIRE HOUSE AND/OR RESCUE SQUAD
 - DUMP - GARBAGE, REFUSE OR TRASH
 - METAL SCRAP YARD
 - SMITTING LAND FILL
 - MISCELLANEOUS DUMP
 - INCINERATOR
 - SEWAGE TREATMENT PLANT
- STRUCTURES**
 - HIGHWAY BRIDGE (MORE THAN 20 SPAN)
 - BRIDGE - GENERAL (ONE SPAN)
 - SUSPENSION BRIDGE
 - TRUSS OR GIRDER BRIDGE
 - CANTILEVER BRIDGE
 - DIAM WITH ROAD
 - HIGHWAY TUNNEL
 - FORD
 - TOLL BRIDGE
- BOUNDARIES**
 - STATE LINE
 - COUNTY LINE
 - MAGISTERIAL DISTRICT LINE
 - INCORPORATED TOWN
 - AREA ENLARGED (SEE SHEET)
 - PARK OR FOREST BOUNDARY
- CONSERVATION OR RECREATION**
 - PICNIC GROUND
 - BATHING BEACH OR POOL
 - SCENIC SITE
 - CAMPING AREA
 - CAMP OR LODGE
 - FOREST RANGER STATION
 - FISH HATCHERY
 - ZOO
 - LOOKOUT TOWER
 - COUNTRY CLUB
 - GOLF COURSE
 - DRUG STORE
 - ATLETIC FIELD
 - AMUSEMENT PARK
 - FAIRGROUND OR RACE TRACK
 - RIDING ACADEMY
 - RIFLE CLUB
 - ROADSIDE PARK
- DWELLINGS, FARM UNITS, ETC.**
 - FARM UNIT
 - DWELLING OTHER THAN FARM
 - TRAILER PARK
 - HOUSE AND STORE (W/NT 985)
 - SEASONAL DWELLING
 - HOTEL
 - MOTEL
 - HOSPITAL
 - REST HOME
 - CHURCH
 - CEMETERY
 - CHURCH WITH CEMETERY
- EDUCATIONAL**
 - PUBLIC SCHOOL
 - OTHER EDUCATIONAL INSTITUTIONS
 - COMMUNITY HALL
 - LIBRARY
- CORRECTIONAL**
 - CORRECTIONAL INSTITUTION
 - COUNTY FARM
- BUSINESS AND INDUSTRY**
 - STORE OR SMALL BUSINESS
 - SHOPPING CENTER
 - FACTORY OR INDUSTRIAL PLANT
 - SEASONAL INDUSTRY
 - SAWMILL
 - PUMPKIN STATION
 - OIL OR GAS WELLS
 - OIL TANKS
 - QUARRY
 - STOCK YARD, LOADING PEN
 - GREENHOUSE
 - NURSERY
- PUBLIC SERVICE FACILITIES**
 - POST OFFICE
 - BUSINESS AND POST OFFICE
 - POWER PLANT
 - POWER SUBSTATION
 - RADIO OR TV TOWER (W/ CALL LETTERS)
 - DEPARTMENT OF HIGHWAYS GARAGE
 - STATE POLICE STATION
 - FIRE HOUSE AND/OR RESCUE SQUAD
 - DUMP - GARBAGE, REFUSE OR TRASH
 - METAL SCRAP YARD
 - SMITTING LAND FILL
 - MISCELLANEOUS DUMP
 - INCINERATOR
 - SEWAGE TREATMENT PLANT
- MISCELLANEOUS**
 - MILITARY POST
 - ARMORY
 - GATE
 - SINK OR DEPRESSION
 - LATITUDE AND LONGITUDE
 - HIGHWAY INTERCHANGE
- CITY AND VILLAGE CENTERS**
 - STATE CAPITAL
 - COUNTY SEAT
 - OTHER CITIES AND VILLAGES

POPULATIONS SHOWN ARE 1990 U.S. CENSUS
VILLAGES SHOWN ARE BETWEEN
ADJACENT ROAD INTERSECTIONS, COR-
PORATION, COUNTY OR STATE LINES
THIS MAP IS DERIVED FROM U.S.G.S. TOPOGRAPHIC MAPS,
AERIAL PHOTOGRAPHS, HIGHWAY PLANS, AND OTHER
INFORMATION. BOUNDARY REVISIONS ARE MADE TO ROAD
LOCATIONS, SURFACE TYPES, BOUNDARY LINES, POST
OFFICES, PLACE NAMES, AND OTHER NON-CULTURAL
FEATURES. ROADSIDE CULTURE BY FIELD SURVEY IN 1994
LAST REVISION DATE:
JANUARY 1, 2000

GENERAL HIGHWAY MAP
CALHOUN COUNTY
WEST VIRGINIA

PREPARED BY
WEST VIRGINIA DEPARTMENT OF TRANSPORTATION
PLANNING AND RESEARCH DIVISION
IN COOPERATION WITH
U.S. DEPARTMENT OF TRANSPORTATION
FEDERAL HIGHWAY ADMINISTRATION



2000