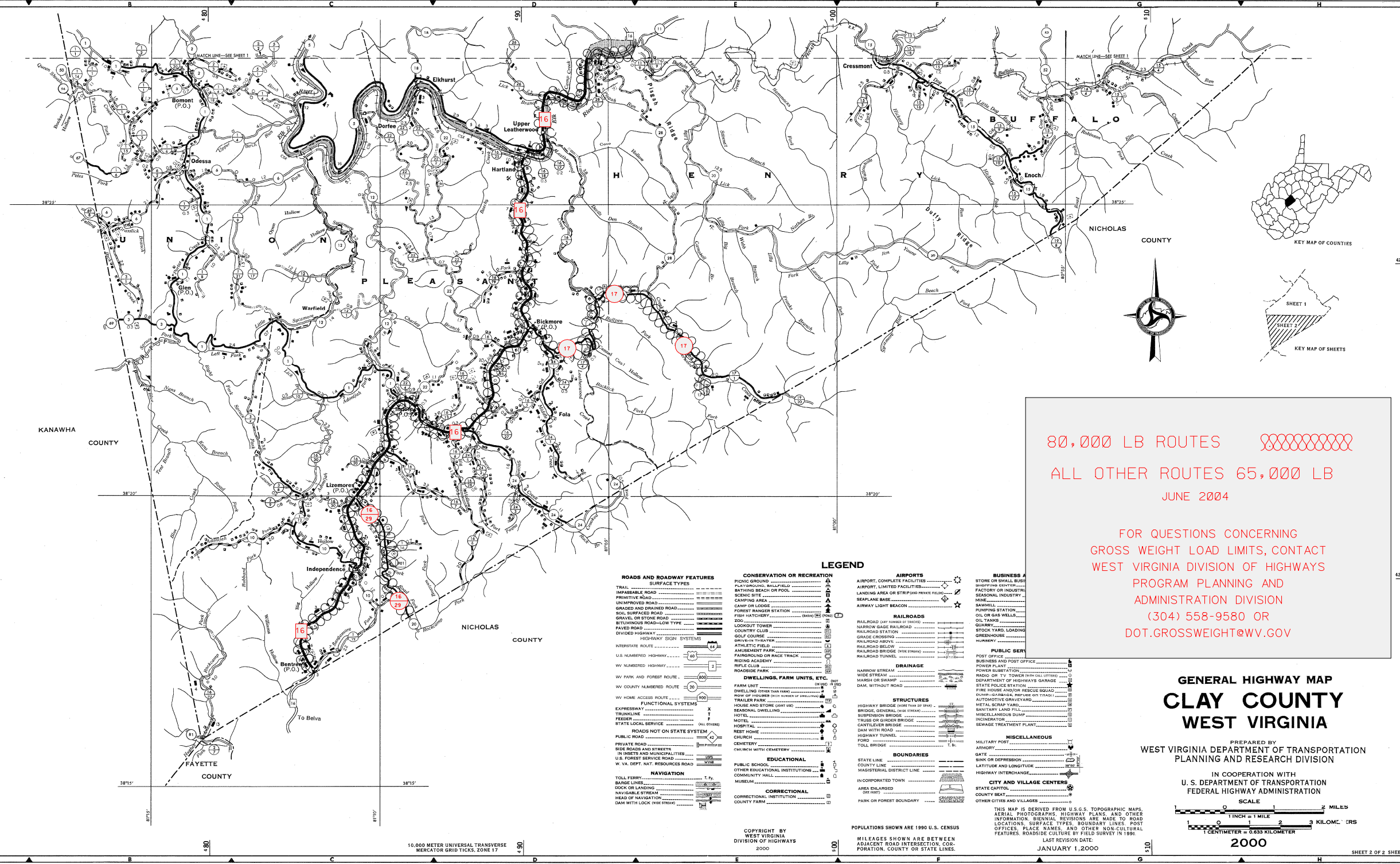



Copies of this map are available for purchase from the West Virginia Department of Transportation, Division of Transportation Planning, 1000 Kanawha Boulevard East, Charleston, West Virginia 25304. Telephone: 204-252-2506.



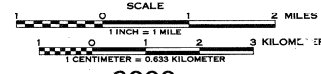
**80,000 LB ROUTES**   
**ALL OTHER ROUTES 65,000 LB**  
 JUNE 2004

FOR QUESTIONS CONCERNING  
 GROSS WEIGHT LOAD LIMITS, CONTACT  
 WEST VIRGINIA DIVISION OF HIGHWAYS  
 PROGRAM PLANNING AND  
 ADMINISTRATION DIVISION  
 (304) 558-9580 OR  
 DOT.GROSSWEIGHT@WV.GOV

## GENERAL HIGHWAY MAP CLAY COUNTY WEST VIRGINIA

PREPARED BY  
 WEST VIRGINIA DEPARTMENT OF TRANSPORTATION  
 PLANNING AND RESEARCH DIVISION

IN COOPERATION WITH  
 U.S. DEPARTMENT OF TRANSPORTATION  
 FEDERAL HIGHWAY ADMINISTRATION



- BUSINESS AND PUBLIC SERVICE**
- STORE OR SMALL BUSINESS
  - SHOPPING CENTER
  - FACTORY OR INDUSTRIAL
  - SEASONAL INDUSTRY
  - MINE
  - SAWMILL
  - PUMPING STATION
  - OIL OR GAS WELLS
  - OIL TANKS
  - QUARRY
  - STOCK YARD, LOADING
  - GREENHOUSE
  - HUNTERY
  - POST OFFICE
  - BUSINESS AND POST OFFICE
  - POWER PLANT
  - RADIO OR TV TOWER (with call letters)
  - DEPARTMENT OF HIGHWAYS GARAGE
  - STATE POLICE STATION
  - FIRE HOUSE AND RESCUE SQUAD
  - CHAR-OR-ARAB-OR-PROP-USE OR TRASH
  - AUTOMOTIVE GRAVEYARD
  - METAL SCRAP YARD
  - SANITARY LAND FILL
  - MISCELLANEOUS DUMP
  - INCINERATOR
  - SEWAGE TREATMENT PLANT
  - MILITARY POST
  - ARMORY
  - GATE
  - SINK OR DEPRESSION
  - LATITUDE AND LONGITUDE
  - MAGISTERIAL DISTRICT LINE
  - INCORPORATED TOWN
  - AREA ENLARGED (SEE NOTE)
  - PARK OR FOREST BOUNDARY

- LEGEND**
- AIRPORTS**
- AIRPORT, COMPLETE FACILITIES
  - AIRPORT, LIMITED FACILITIES
  - LANDING AREA OR STRIP (AND PRIVATE FIELD)
  - SEAPLANE BASE
  - AIRWAY LIGHT BEACON
- RAILROADS**
- RAILROAD (with number of tracks)
  - NARROW GAUGE RAILROAD
  - RAILROAD STATION
  - GRADE CROSSING
  - RAILROAD ABOVE
  - RAILROAD BELOW
  - RAILROAD BRIDGE (wide stream)
  - RAILROAD TUNNEL
- DRAINAGE**
- NARROW STREAM
  - WIDE STREAM
  - MARSH OR SWAMP
  - DAM, WITHOUT ROAD
- STRUCTURES**
- HIGHWAY BRIDGE (more than 20' span)
  - BRIDGE, GENERAL (use stream)
  - SUSPENSION BRIDGE
  - TRUSS OR GIRDER BRIDGE
  - CANTILEVER BRIDGE
  - DAM WITH ROAD
  - HIGHWAY TUNNEL
  - FORD
  - TOLL BRIDGE
- BOUNDARIES**
- STATE LINE
  - COUNTY BOUNDARY
  - MAGISTERIAL DISTRICT LINE
  - INCORPORATED TOWN
  - AREA ENLARGED (SEE NOTE)
  - PARK OR FOREST BOUNDARY

- CONSERVATION OR RECREATION**
- PICNIC GROUND
  - PLAYGROUND, BALLFIELD
  - BATHING BEACH OR POOL
  - SCENIC SITE
  - CAMPING AREA
  - CAMP OR LODGE
  - FOREST RANGER STATION
  - FISH HATCHERY
  - LOOKOUT TOWER
  - COUNTRY CLUB
  - GOLF COURSE
  - ATHLETIC FIELD
  - DRIVE-IN THEATER
  - AMUSEMENT PARK
  - FAIRGROUND OR RACE TRACK
  - RIDING ACADEMY
  - RIFLE CLUB
  - ROCKING HORSE
- DEWELLINGS, FARM UNITS, ETC.**
- FARM UNIT
  - DWELLING (OTHER THAN HOME)
  - PROV. OF HOUSING (with number of dwellings)
  - TRAILER PARK
  - HOUSE AND STORE (with use)
  - SEASONAL DWELLING
  - HOTEL
  - MOTEL
  - HOSPITAL
  - REST HOME
  - CHURCH
  - CEMETERY
  - CHURCH WITH CEMETERY
- EDUCATIONAL**
- PUBLIC SCHOOL
  - MUSEUM
- CORRECTIONAL**
- CORRECTIONAL INSTITUTION
  - COUNTY FARM

- ROADS AND ROADWAY FEATURES**
- SURFACE TYPES**
- TRAIL
  - IMPASSIBLE ROAD
  - PRIMITIVE ROAD
  - UNIMPROVED ROAD
  - GRAVEL OR STONE ROAD
  - SOIL SURFACED ROAD
  - PAVED ROAD
  - BITUMINOUS ROAD-LOW TYPE
  - DIVIDED HIGHWAY
  - HIGHWAY SIGN SYSTEMS
- FUNCTIONAL SYSTEMS**
- EXPRESSWAY
  - TRUNKLINE
  - FEEDER
  - STATE LOCAL SERVICE
- ROADS NOT ON STATE SYSTEM**
- PRIVATE ROAD
  - SIDE ROADS AND STREETS
  - IN VILLAGES AND MUNICIPALITIES
  - U.S. FOREST SERVICE ROAD
  - W. VA. DEPT. NAT. RESOURCES ROAD
- NAVIGATION**
- TOLL FERRY
  - BARGE LINES
  - DOCK OR LANDING
  - NAVIGABLE STREAM
  - HEAD OF NAVIGATION
  - DAM WITH LOCK (wide stream)

10,000 METER UNIVERSAL TRANSVERSE  
 MERCATOR GRID TICKS, ZONE 17

COPYRIGHT BY  
 WEST VIRGINIA  
 DIVISION OF HIGHWAYS  
 2000

POPULATIONS SHOWN ARE 1990 U.S. CENSUS  
 MILEAGES SHOWN ARE BETWEEN  
 ADJACENT ROAD INTERSECTION, COR-  
 PORATION, COUNTY OR STATE LINES.  
 LAST REVISION DATE:  
 JANUARY 1, 2000