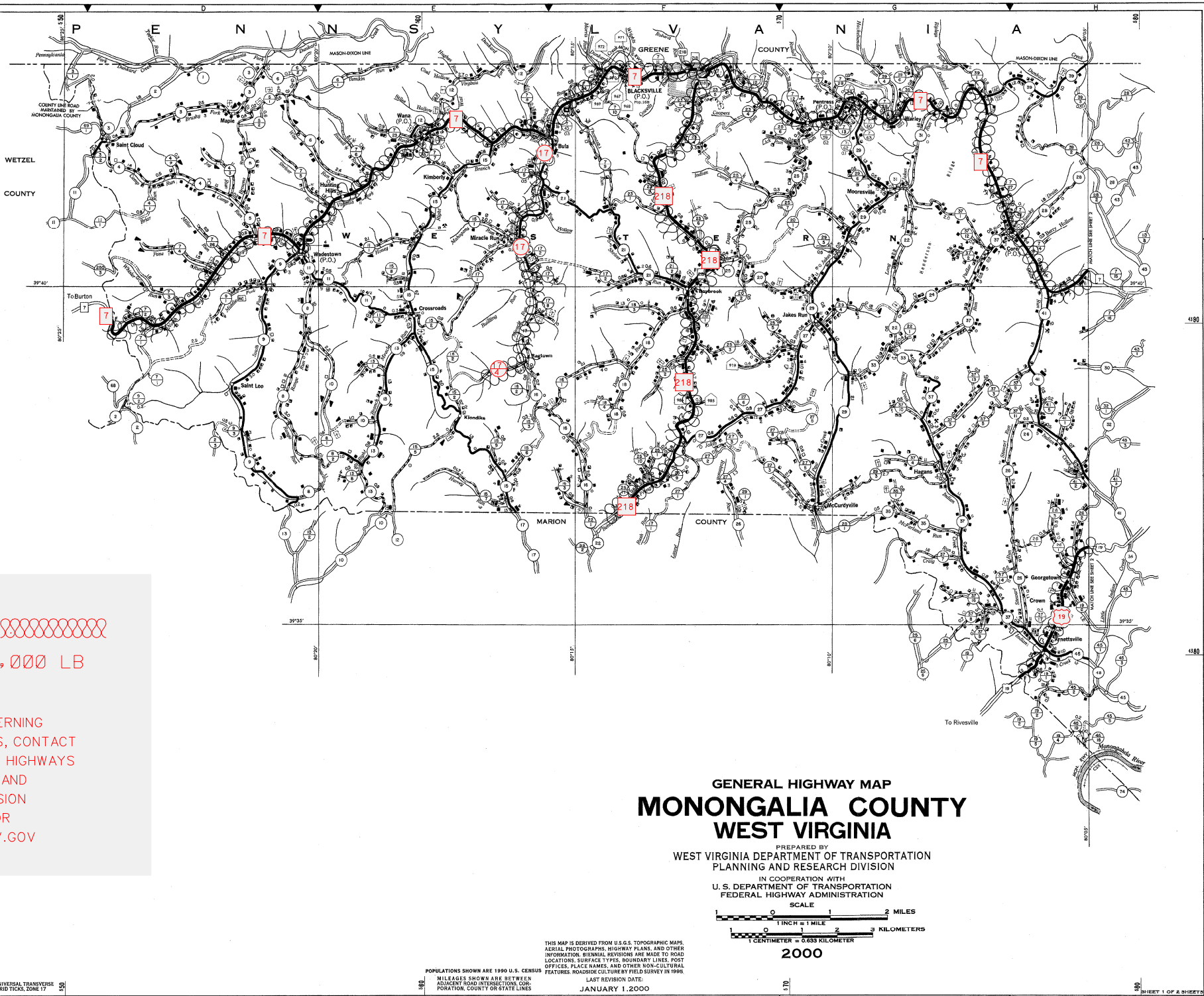



LEGEND

ROADS AND ROADWAY FEATURES		CONSERVATION OR RECREATION	
TRAIL	POND
IMPASSIBLE ROAD	PLAYGROUND, BALLFIELD
PRIMITIVE ROAD	BATHING BEACH OR POOL
UNIMPROVED ROAD	SCENIC SITE
GRAVEL OR DRAINED ROAD	CAMP OR LODGE
SOIL SURFACED ROAD	FISH HATCHERY
GRAVEL OR STONE ROAD	FOREST RANGER STATION
BITUMINOUS ROAD-LOW TYPE	ZOO
PAVED ROAD	LOOKING TOWER
PAVING ROAD	COUNTRY CLUB
HIGHWAY SIGN SYSTEMS	GOLF COURSE
INTERSTATE ROUTE	DRIVE-IN THEATER
U.S. NUMBERED HIGHWAY	ATHLETIC FIELD
WV NUMBERED HIGHWAY	FAIRGROUND OR RACE TRACK
WV PARK AND FOREST ROUTE	RINKING ACADEMY
WV COUNTY NUMBERED ROUTE	RIFLE CLUB
WV HOME ACCESS ROUTE	ROADSIDE PARK
FUNCTIONAL SYSTEMS	FARM UNIT
EXPRESSWAY	DWELLING (SPER THAN FARM)
TRUNKLINE	ROW OF HOUSES (WITH NUMBER OF DWELLINGS)
FEEDER	TRAILER PARK
STATE LOCAL SERVICE	HOUSE AND STORE (COUNT)
ROADS NOT ON STATE SYSTEM	SEASONAL DWELLING
PUBLIC ROAD	HOTEL
PRIVATE ROAD	HOSPITAL
SIDE ROADS AND STREETS	REST HOME
IN INSETS AND MUNICIPALITIES	CHURCH
U.S. FOREST SERVICE ROAD	CEMETERY
W. VA. DEPT. NAT. RESOURCES ROAD	CHURCH WITH CEMETERY
NAVIGATION	EDUCATIONAL
TOLL FERRY	PUBLIC SCHOOL
BARGE LINES	OTHER EDUCATIONAL INSTITUTIONS
DOCK OR LANDING	COMMUNITY HALL
HAVABLE STREAM	MUSEUM
HEAD OF NAVIGATION	CORRECTIONAL
DAM WITH LOCK (WIDE STREAM)	CORRECTIONAL INSTITUTION
DAM WITHOUT ROAD	COUNTY FARM
AIRPORTS	BUSINESS AND INDUSTRY
AIRPORT, COMPLETE FACILITIES	STORE OR SMALL BUSINESS
AIRPORT, LIMITED FACILITIES	SHOPPING CENTER
LANDING AREA OR STRIP (AND PRIVATE FIELD)	FACTORY OR INDUSTRIAL PLANT
SEAPLANE BASE	SEASONAL INDUSTRY
AIRWAY LIGHT BEACON	MINI
RAILROADS	PUMPING STATION
RAILROAD (ANY NUMBER OF TRACKS)	OIL OR GAS WELLS
NARROW GAUGE RAILROAD	OIL TANKS
RAILROAD STATION	QUARRY
GRADE CROSSING	STOCK YARD, LOADING PEN
RAILROAD ABOVE	GREENHOUSE
RAILROAD BELOW	NURSERY
RAILROAD BRIDGE (OVER STREAM)	PUBLIC SERVICE FACILITIES
RAILROAD TUNNEL	POST OFFICE
DRAINAGE	BUSINESS AND POST OFFICE
NARROW STREAM	POWER PLANT
WIDE STREAM	ROAD OR TOWER (WITH CALL LETTERS)
MARSH OR SWAMP	DEPARTMENT OF HIGHWAYS GARAGE
DAM WITHOUT ROAD	STATE POLICE STATION
STRUCTURES	FIRE HOUSE AND/OR RESCUE SQUAD
HIGHWAY BRIDGE (OVER RAIL OR ROAD)	DUMP-GARAGE, REFUSE OR TRASH
BRIDGE, GENERAL (OVER STREAM)	AUTOMOTIVE GRAVEYARD
SUSPENSION BRIDGE	METAL SCRAP YARD
TRUSS OR GIRDER BRIDGE	BANITARY LAND FILL
CANTILEVER BRIDGE	MISCELLANEOUS DUMP
DAM WITH ROAD	INCINERATOR
HIGHWAY TUNNEL	SEWAGE TREATMENT PLANT
FORD	MISCELLANEOUS
TOLL BRIDGE	MILITARY POST
BOUNDARIES	ARMORY
STATE LINE	GATE
COUNTY LINE	SINK OR DEPRESSION
MAGISTERIAL DISTRICT LINE	LATITUDE AND LONGITUDE
INCORPORATED TOWN	HIGHWAY INTERCHANGE
AREA ENLARGED	CITY AND VILLAGE CENTERS
WV 1900	STATE CAPITAL
PARK OR FOREST BOUNDARY	COUNTY SEAT
		OTHER CITIES AND VILLAGES



80,000 LB ROUTES 

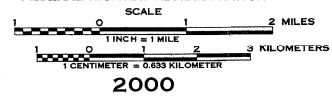
ALL OTHER ROUTES 65,000 LB

DECEMBER 2004

FOR QUESTIONS CONCERNING
GROSS WEIGHT LOAD LIMITS, CONTACT
WEST VIRGINIA DIVISION OF HIGHWAYS
PROGRAM PLANNING AND
ADMINISTRATION DIVISION
(304) 558-9580 OR
DOT.GROSSWEIGHT@WV.GOV

**GENERAL HIGHWAY MAP
MONONGALIA COUNTY
WEST VIRGINIA**

PREPARED BY
WEST VIRGINIA DEPARTMENT OF TRANSPORTATION
PLANNING AND RESEARCH DIVISION
IN COOPERATION WITH
U.S. DEPARTMENT OF TRANSPORTATION
FEDERAL HIGHWAY ADMINISTRATION



THIS MAP IS DERIVED FROM U.S.G.S. TOPOGRAPHIC MAPS, AERIAL PHOTOGRAPHS, HIGHWAY PLANS, AND OTHER INFORMATION. BIENNIAL REVISIONS ARE MADE TO ROAD LOCATIONS, SURFACE TYPES, BOUNDARY LINES, POST OFFICES, PLACE NAMES, AND OTHER NON-CULTURAL FEATURES. ROADWAY CULTURE BY FIELD SURVEY IN 1998.
LAST REVISION DATE:
JANUARY 1, 2000

POPULATIONS SHOWN ARE 1990 U.S. CENSUS
MILEAGES SHOWN ARE BETWEEN
ADJACENT ROAD INTERSECTIONS, COR-
PORATION, COUNTY OR STATE LINES

Copyright © 2000 by the West Virginia Department of Transportation, Planning and Research Division. All rights reserved. This map is a reproduction of the original map published by the West Virginia Department of Transportation, Planning and Research Division in 1998. The original map was published by the West Virginia Department of Transportation, Planning and Research Division in 1998. The original map was published by the West Virginia Department of Transportation, Planning and Research Division in 1998.