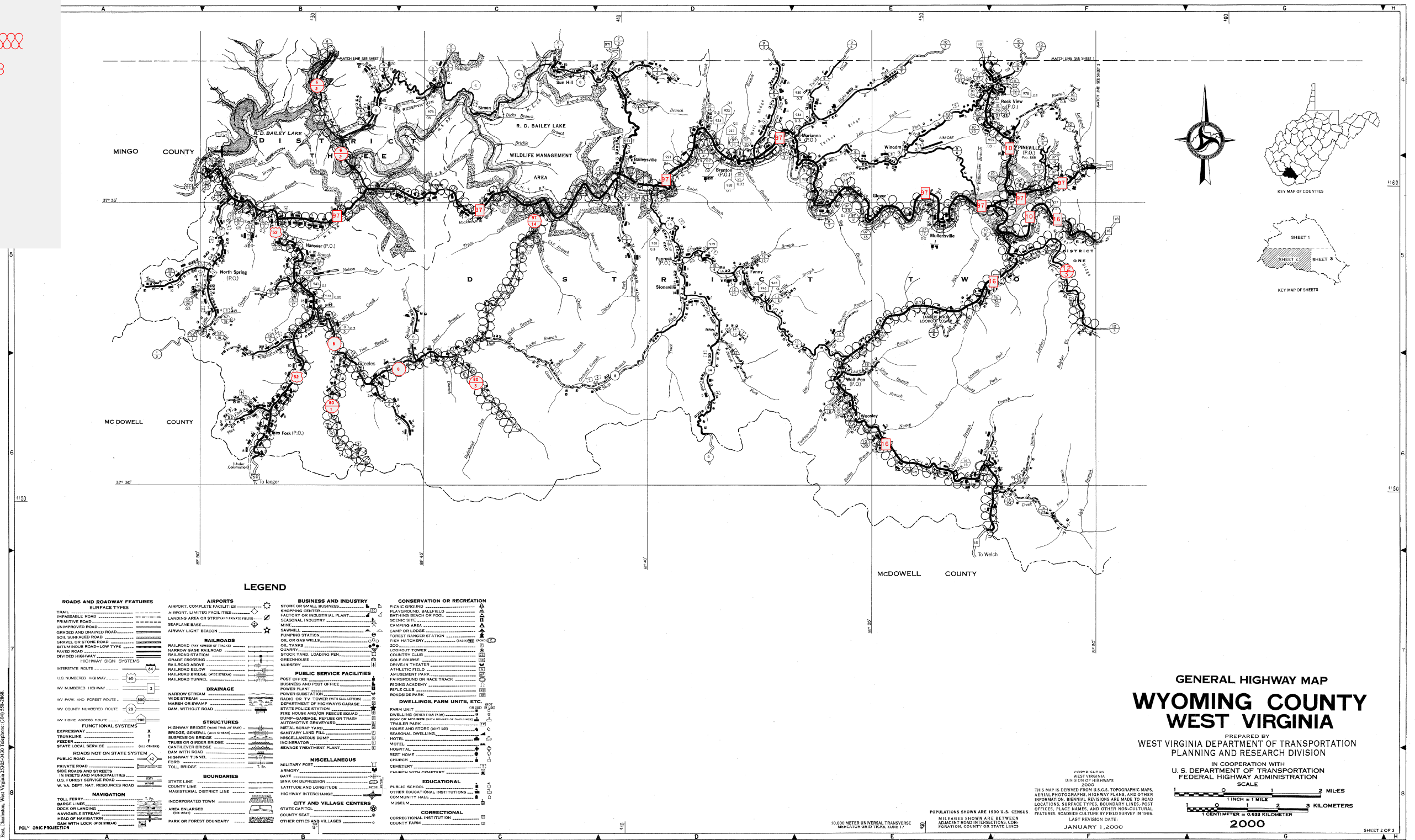


80,000 LB ROUTES 
 ALL OTHER ROUTES 65,000 LB
 JANUARY 2005

FOR QUESTIONS CONCERNING
 GROSS WEIGHT LOAD LIMITS, CONTACT
 WEST VIRGINIA DIVISION OF HIGHWAYS
 PROGRAM PLANNING AND
 ADMINISTRATION DIVISION
 (304) 558-9580 OR
 DOT.GROSSWEIGHT@WV.GOV



Copies of this map are available to the public and to government agencies at a nominal price. Write for the MAP PRICE LIST to: West Virginia Department of Transportation, Division of Transportation Planning and Research, 1000 Kanawha Blvd. S., Charleston, West Virginia 25304. Telephone: (304) 558-2800.

GENERAL HIGHWAY MAP WYOMING COUNTY WEST VIRGINIA

PREPARED BY
 WEST VIRGINIA DEPARTMENT OF TRANSPORTATION
 PLANNING AND RESEARCH DIVISION

IN COOPERATION WITH
 U. S. DEPARTMENT OF TRANSPORTATION
 FEDERAL HIGHWAY ADMINISTRATION

SCALE
 1 INCH = 1 MILE
 1 CENTIMETER = 0.633 KILOMETER

2000

COPYRIGHT BY
 WEST VIRGINIA
 DIVISION OF HIGHWAYS
 2000
 THIS MAP IS DERIVED FROM U.S.G.S. TOPOGRAPHIC MAPS,
 AERIAL PHOTOGRAPHS, HIGHWAY PLANS, AND OTHER
 INFORMATION. BIENNIAL REVISIONS ARE MADE TO ROAD
 LOCATIONS, SURFACE TYPES, BOUNDARY LINES, POST
 OFFICES, PLACE NAMES, AND OTHER NON-CULTURAL
 FEATURES. ROADSIDE CULTURE BY FIELD SURVEY IN 1986.
 LAST REVISION DATE:
 JANUARY 1, 2000

POPULATIONS SHOWN ARE 1990 U.S. CENSUS
 MILEAGES SHOWN ARE BETWEEN
 ADJACENT ROAD INTERSECTIONS, COR-
 FORKING, COUNTY OR STATE LINES