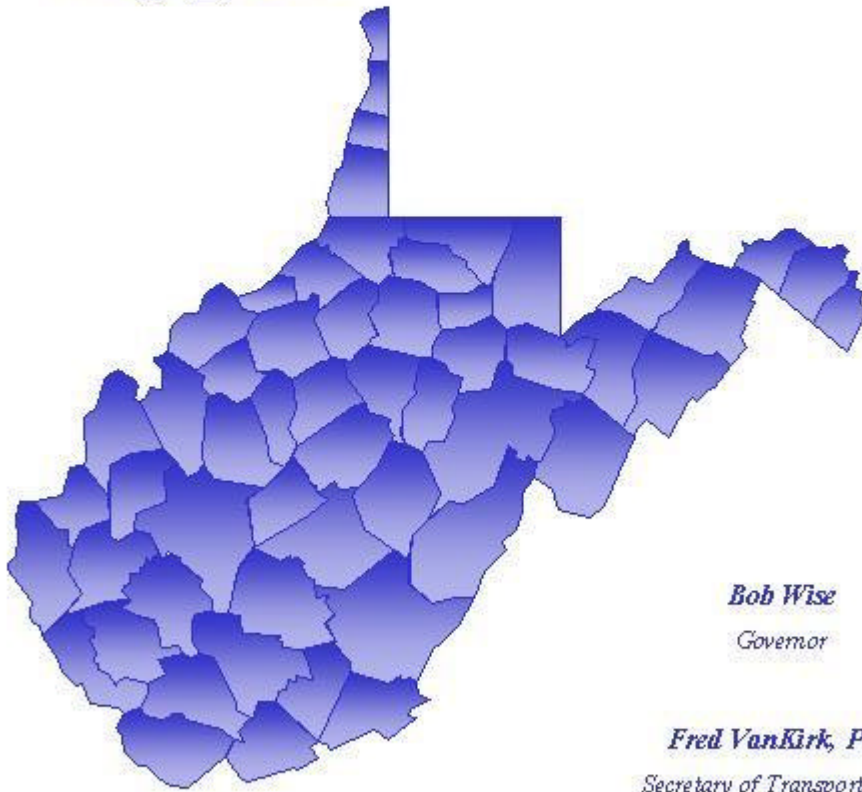


West Virginia Department of Transportation

2000 Accident Data



Bob Wise
Governor

Fred VanKirk, P.E.
Secretary of Transportation,
Commissioner of Highways

In Cooperation with:
United States Department of Transportation, Federal Highway Administration

The following pages provide information on traffic accidents that occurred during the year 2000 in West Virginia. The data contained within this report is extracted, by the West Virginia Division of Highways, Traffic Engineering Division, from a database of West Virginia Uniform Traffic Crash Reports submitted to the West Virginia Division of Motor Vehicles by state law enforcement agencies. These law enforcement agencies include the West Virginia State Police, all County Sheriff's Departments, and Municipal Police Departments, as well as other agencies.

The **2000 West Virginia Accident Data Report** has been revised. The changes and additions found in this report were made as an effort to provide additional and/or more useful information to the users. The revisions reflect the input of many organizations and people. We encourage you to use caution in comparing information to older data, as some of the data contained in this version appears to be the same as data contained in previous versions, while it is in fact only similar. If you have any questions or suggestions about the changes to this edition, please contact the West Virginia Division of Highways, Traffic Engineering Division at the number listed below.

For your reference, a copy of the West Virginia Uniform Traffic Crash Report form utilized by law enforcement agencies is also included in this report.

Additional copies of this report or further information about the material contained in this publication may be obtained from:

**West Virginia Division of Highways
Traffic Engineering Division
1900 Kanawha Boulevard East
Charleston, West Virginia 25305-0430**

Telephone: (304) 558-3063

Table of Contents

West Virginia Accident Trends

Accident Trend 1996 – 2000.....	1
Accident Injuries Trend 1996 – 2000	1
Accident Fatalities Trend 1996 – 2000.....	2
Accident Fatalities Trend 1981 – 2000.....	2

2000 General Summary

2000 Summary	3
Accidents by Highway Classification	4
Accident Source	4
Type of Vehicle Involved in Accidents (Table)	5
Type of Vehicles Registered in West Virginia (Table).....	5
Type of Vehicle Involved in Accidents (Graph).....	6
Type of Vehicles Registered in West Virginia (Graph).....	6
Accidents by Month.....	7
Accidents by Day of Week	7
Accidents by Time of Day	7
Accidents by Contributing Circumstances	8
Accidents by Manner of Collision.....	9
Explanation of Most Harmful Event.....	10
Non-Collision Most Harmful Events.....	11
Collision with Non-Fixed Object Most Harmful Events.....	12
Collision with Fixed Object Most Harmful Events.....	13
Statewide Average Accident Rates 1998 – 2000.....	14
Statewide Accident Totals	15

Driver Information

Accidents by Age of Driver	16
Accidents by Gender of Driver.....	16
Accidents by Age & Gender of Driver	17
Accidents by Driver Action	18
Accidents by Condition of Driver.....	18

Environmental Conditions

Accidents by Lighting Condition	19
Accidents by Weather Condition.....	19
Accidents by Traffic Control.....	19
Accidents by Roadway Characteristic	20
Accidents by Roadway Surface Condition.....	20
Accidents by Roadway Type.....	20

Injury Severity

Severity of Injuries Received in Accidents	21
Severity of Injuries by Age	22
Severity of Injuries by Gender	22
Severity of Injuries by Highway Class	23
First Aid Provided By.....	23

Fatal Accidents

Fatalities by Age.....	24
Fatalities by Gender.....	24
Fatalities by Type of Occupant Protection Used	24
Fatal Accidents by Age of Driver	25
Fatal Accidents by Gender of Driver	25
Fatal Accidents by Age & Gender of Driver	26
Fatal Accidents by Month	27
Fatal Accidents by Day of Week	27
Fatal Accidents by Time of Day.....	27
Fatal Accidents by Highway Classification	28
Fatal Accidents by Lighting Condition	28
Fatal Accidents by Weather Condition	28

Table of Contents

Occupant Protection

Type of Occupant Protection Used in Accidents.....	29
Type of Occupant Protection Used by Occupant's Age.....	30
Type of Occupant Protection Used by Occupant's Gender.....	30
Percent Usage of Occupant Protection by Occupant's Gender.....	30
Severity of Occupant Injuries by Type of Occupant Protection Used	31

Workzone Accidents

Workzone Accidents by Age of Driver.....	32
Workzone Accidents by Gender of Driver.....	32
Injury Severity of Workzone Accidents.....	32
Workzone Accidents by Month.....	33
Workzone Accidents by Day of Week.....	33
Workzone Accidents by Time of Day.....	33
Workzone Accidents by Highway Classification	34
Workzone Accidents by Manner of Collision	34
Workzone Accidents by Lighting Condition.....	35
Workzone Accidents by Weather Condition.....	35

School Zone Accidents

School Zone Accidents by Age of Driver	36
School Zone Accidents by Gender of Driver	36
School Zone Accidents Involving Pedestrian by Age of Pedestrian.....	37
School Zone Accidents Involving Pedestrian by Gender of Pedestrian	37
School Zone Accidents by Age of Those Involved	38
School Zone Accidents by Gender of Those Involved.....	38
Injury Severity of School Zone Accidents	39
Injury Severity of School Zone Accidents by Age	39
School Zone Accidents by Month	40
School Zone Accidents by Day of Week	40
School Zone Accidents by Time of Day.....	40
School Zone Accidents by Highway Classification.....	41
School Zone Accidents by Municipal or Non-Municipal Location	41
School Zone Accidents by Lighting Condition	41
School Zone Accidents by Weather Condition.....	41

Pedestrian Accidents

Pedestrian Accidents by Age of Pedestrian.....	42
Pedestrian Accidents by Gender of Pedestrian.....	42
Severity of Injury to Pedestrian	42
Pedestrian Accidents by Month.....	43
Pedestrian Accidents by Day of Week.....	43
Pedestrian Accidents by Time of Day.....	43
Pedestrian Accidents by Highway Classification	44
Pedestrian Accidents by Municipal or Non-Municipal Location.....	44
Pedestrian Accidents by Lighting Condition.....	44
Pedestrian Accidents by Weather Condition	44

Bicycle Accidents

Bicycle Accidents by Age of Bicyclist	45
Bicycle Accidents by Gender of Bicyclist	45
Severity of Injuries to Bicyclist.....	45
Bicycle Accidents by Month.....	46
Bicycle Accidents by Day of Week.....	46
Bicycle Accidents by Time of Day.....	46
Bicycle Accidents by Highway Classification	47
Bicycle Accidents by Municipal or Non-Municipal Location.....	47
Bicycle Accidents by Lighting Condition	47
Bicycle Accidents by Weather Condition	47

Table of Contents

Motorcycle Accidents

Motorcycle Accidents by Age of Motorcyclist.....	48
Motorcycle Accidents by Gender of Motorcyclist.....	48
Severity of Injuries to Motorcyclist.....	48
Motorcycle Accidents by Month.....	49
Motorcycle Accidents by Day of Week.....	49
Motorcycle Accidents by Time of Day.....	49
Motorcycle Accidents by Highway Classification.....	50
Motorcycle Accidents by Municipal or Non-Municipal Location.....	50
Motorcycle Accidents by Lighting Condition.....	50
Motorcycle Accidents by Weather Condition.....	50

Large Truck Accidents

Large Truck Accidents by Age of Driver.....	51
Large Truck Accidents by Gender of Driver.....	51
Injury Severity of Large Truck Accidents.....	51
Large Truck Accidents by Month.....	52
Large Truck Accidents by Day of Week.....	52
Large Truck Accidents by Time of Day.....	52
Large Truck Accidents by Highway Classification.....	53
Percent of Large Truck Traffic by Highway Classification.....	53
Large Truck Accidents by Lighting Condition.....	54
Large Truck Accidents by Weather Condition.....	54

Alcohol Related Accidents

Alcohol Related Accidents by Age of Driver.....	55
Alcohol Related Accidents by Gender of Driver.....	55
Injury Severity of Alcohol Related Accidents.....	55
Alcohol Related Accidents by Month.....	56
Alcohol Related Accidents by Day of Week.....	56
Alcohol Related Accidents by Time of Day.....	56
Alcohol Related Accidents by Highway Classification.....	57
Alcohol Related Accidents by Municipal or Non-Municipal Location.....	57
Alcohol Related Accidents by Lighting Condition.....	57
Alcohol Related Accidents by Weather Condition.....	57

County and Municipal Information

Economic Loss by County.....	58
Accident Rates by County.....	60
Municipal Accident Information Class I Cities (Population Over 50,000).....	62
Municipal Accident Information Class II Cities (Population 10,000 to 49,999).....	62
Municipal Accident Information Class III Cities (Population 2,000 to 9,999).....	63
Municipal Accident Information Population Less Than 2,000.....	64

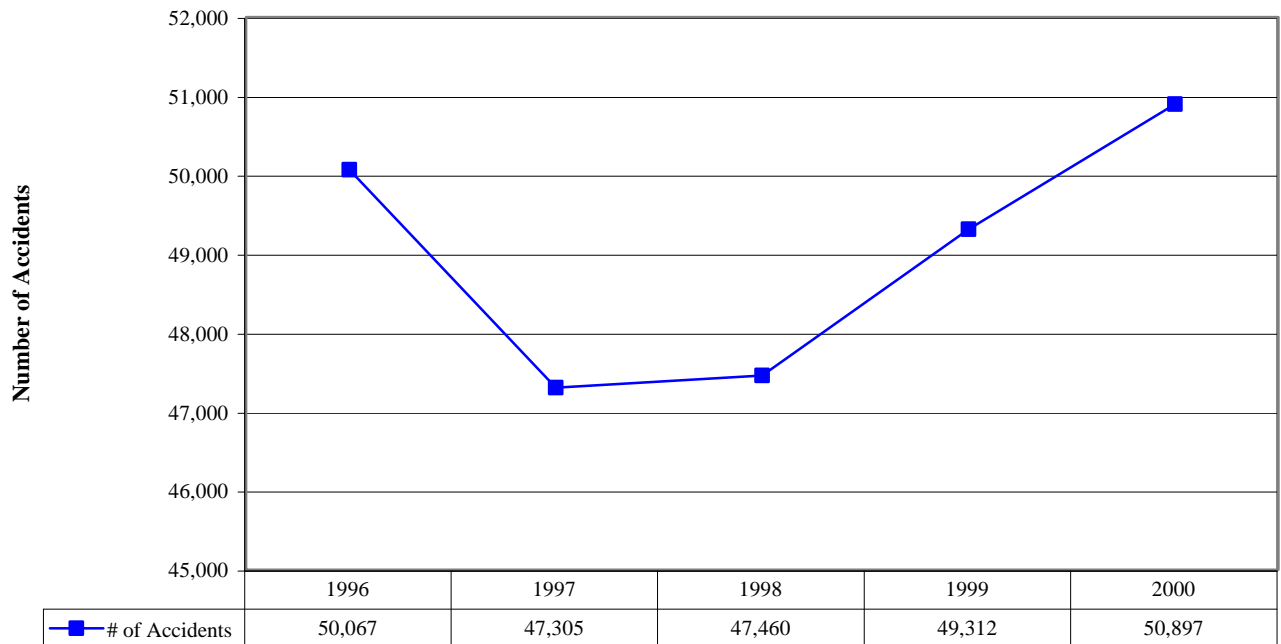
Glossary.....	68
---------------	----

Uniform Traffic Crash Report.....	71
-----------------------------------	----

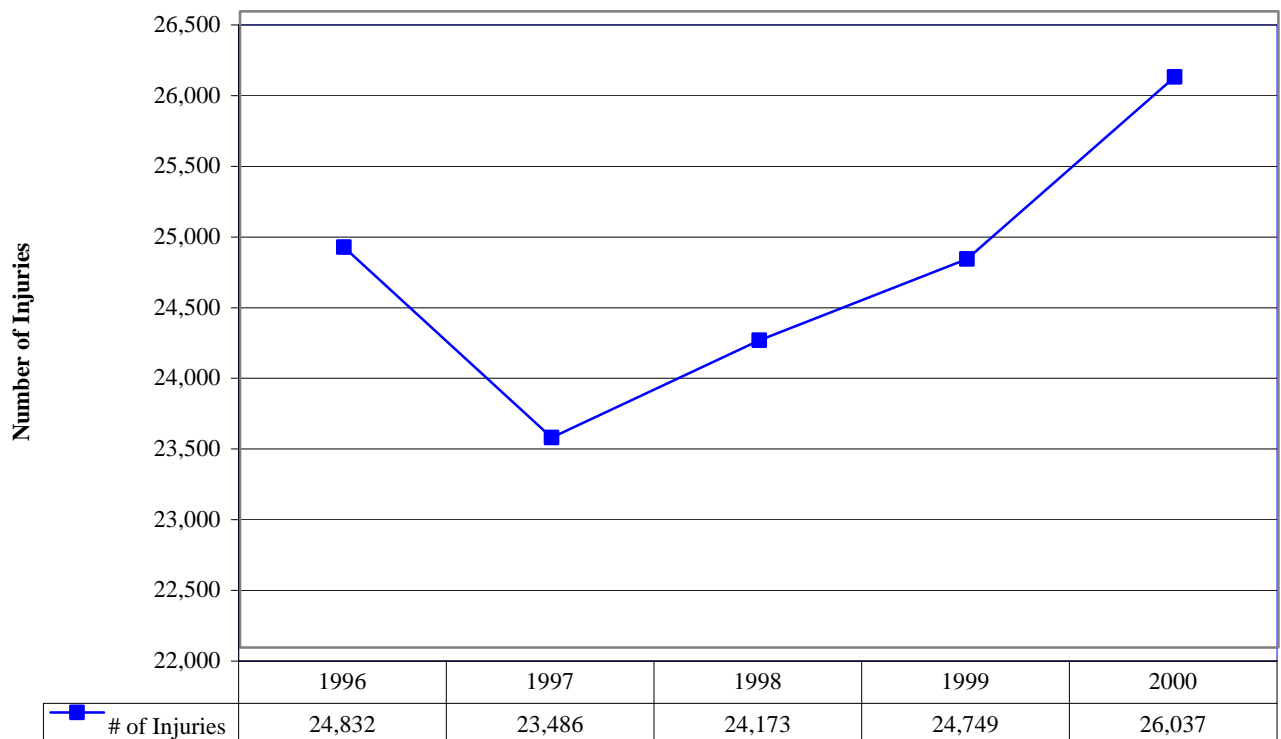
Section 17C-4 of the West Virginia State Code.....	75
--	----

West Virginia Accident Trends

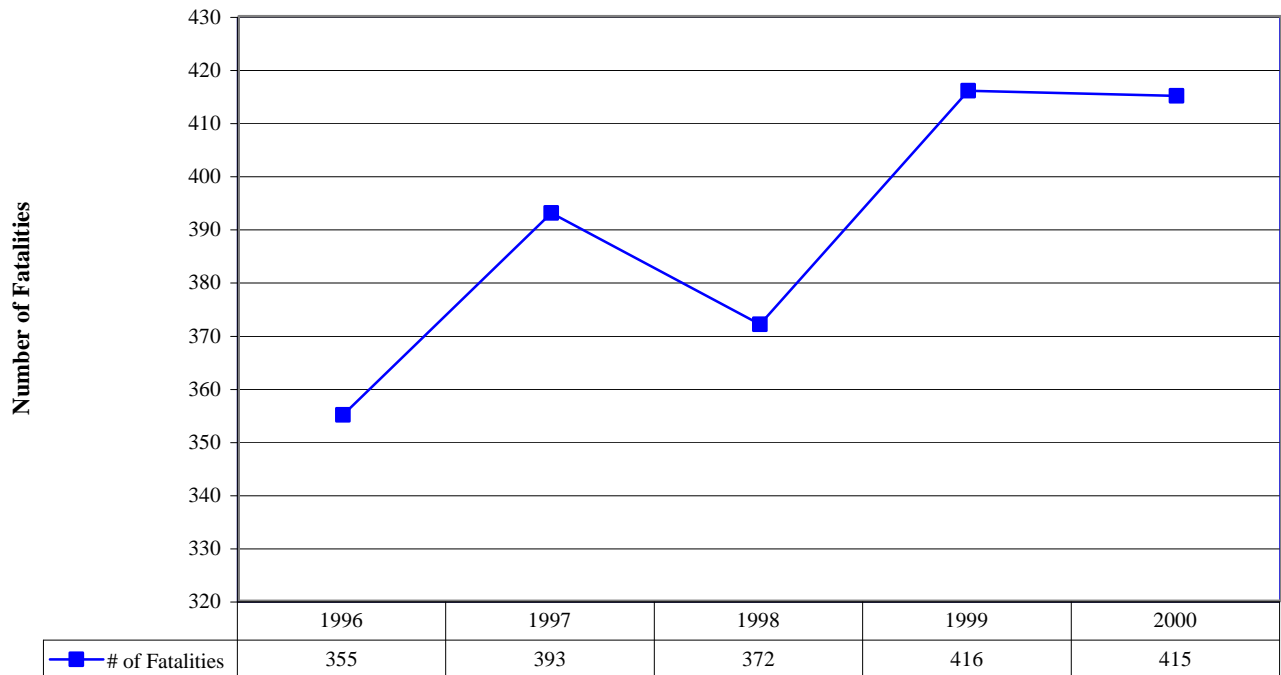
WV Traffic Accidents 1996 - 2000



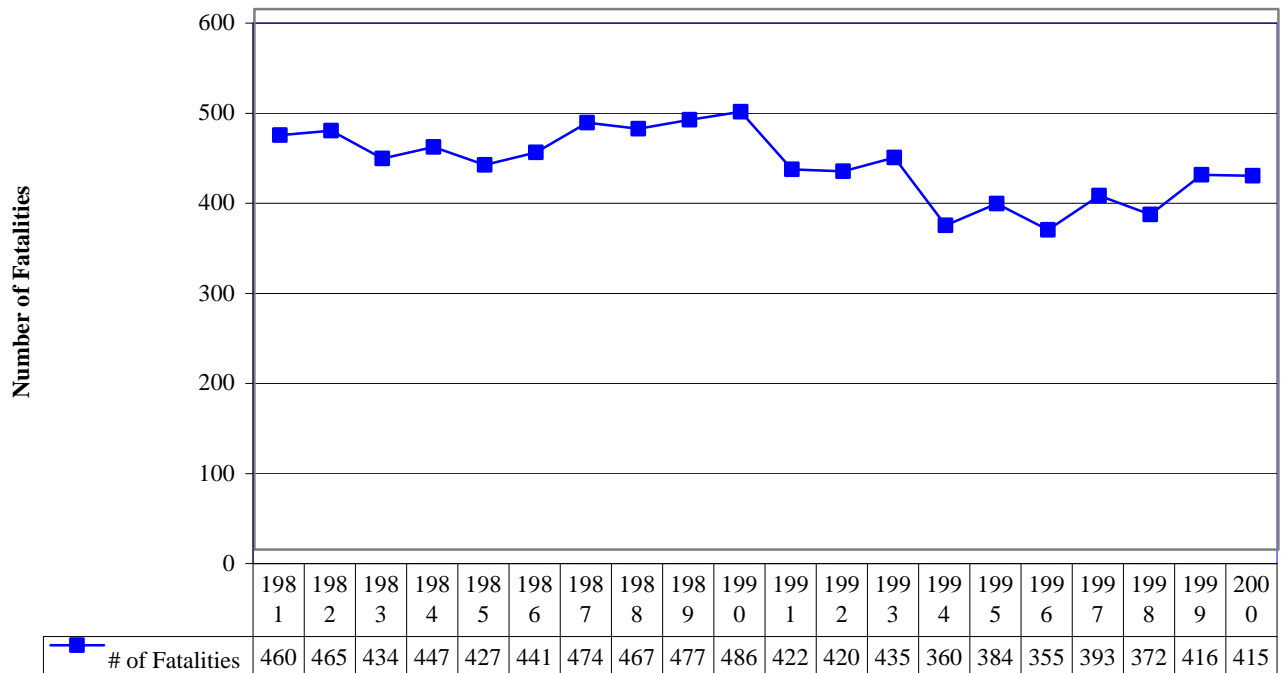
WV Traffic Accident Injuries 1996 - 2000



WV Traffic Accident Fatalities 1996 - 2000



WV Traffic Accident Fatalities 1981 - 2000



General Summary 2000 Accident Data

In 2000, In West Virginia There Were:

Accidents	50,897
Injury Accidents	17,009
Fatal Accidents	357
Property Damage Only Accidents	33,531

These Accidents Resulted In:

Type A Injuries*	8,174
Type B Injuries*	5,566
Type C Injuries*	12,297
Fatalities	415
Estimated Economic Loss**	\$3,051,914,000

Currently in West Virginia There Are:

Licensed Drivers	1,352,201
Licensed Motor Vehicles	1,580,515
Annual Vehicle Miles Traveled***	18,016,722,000

*** Injury Classifications**

Type A Injury – Bleeding Wound, Distorted Member, or Had to be Carried from the Scene

Type B Injury – Bruises, Abrasions, Swelling, Limping, etc.

Type C Injury – No Visible Injury, but Complaint of Pain or Momentary Unconsciousness

**** Based on Estimates by the Federal Highway Administration, where:**

Fatality = \$2,600,000

Type A Injury = \$180,000

Type B Injury = \$36,000

Type C Injury = \$19,000

Property Damage Only Accident = \$2,000

***** 1999 Actual**

Accidents by Highway Classification

Highway Class*	Number	% Total
Interstate	4,344	8.53%
US	11,834	23.25%
WV	13,337	26.20%
County	11,622	22.83%
City	7,223	14.19%
Other	2,537	4.98%
TOTAL	50,897	100.00%

* Interstate, US, WV, and County Routes are State Maintained
City Streets are Non-State Maintained

Accident Source

Accident Source	Number	% Total
State Police	13,357	26.24%
City Police	21,718	42.67%
Sheriff	15,318	30.10%
Other	504	0.99%
TOTAL	50,897	100.00%

**Type of Vehicle
Involved in Accidents**

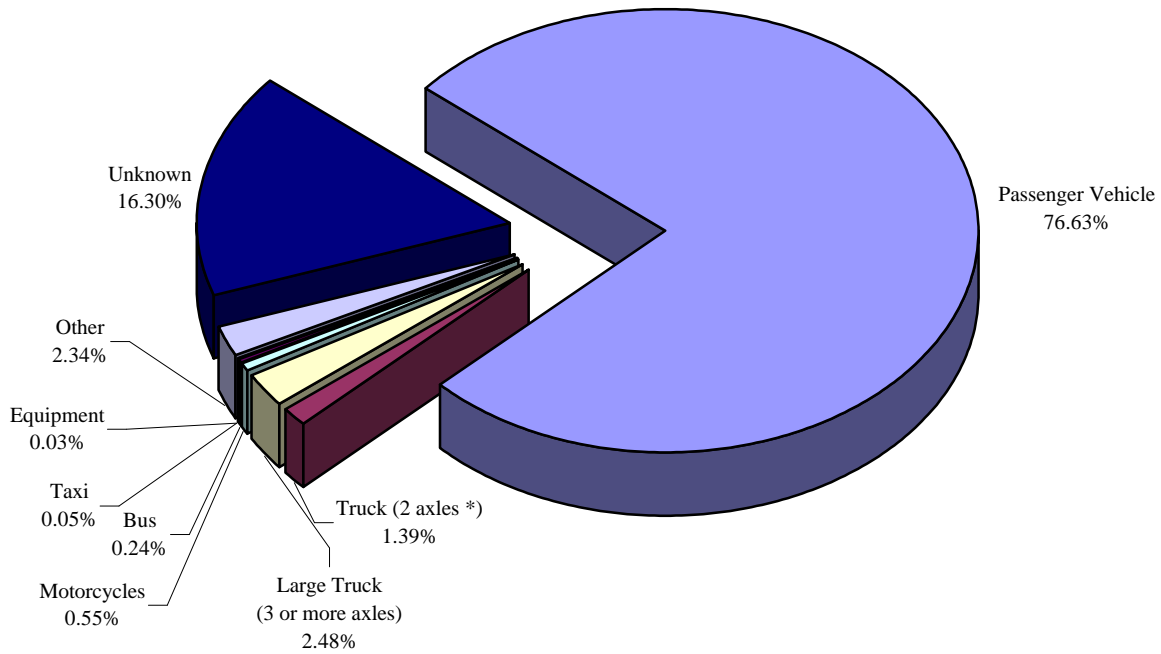
Vehicle Type	Number	% Total
Passenger Vehicle	78,120	76.63%
Truck (2 axles *)	1,413	1.39%
Large Truck (3 or more axles)	2,532	2.48%
Motorcycles	562	0.55%
Bus	240	0.24%
Taxi	54	0.05%
Equipment	26	0.03%
Other	2,383	2.34%
Unknown	16,617	16.30%
TOTAL	101,947	100.00%

**Type of Vehicle
Registered in West Virginia**

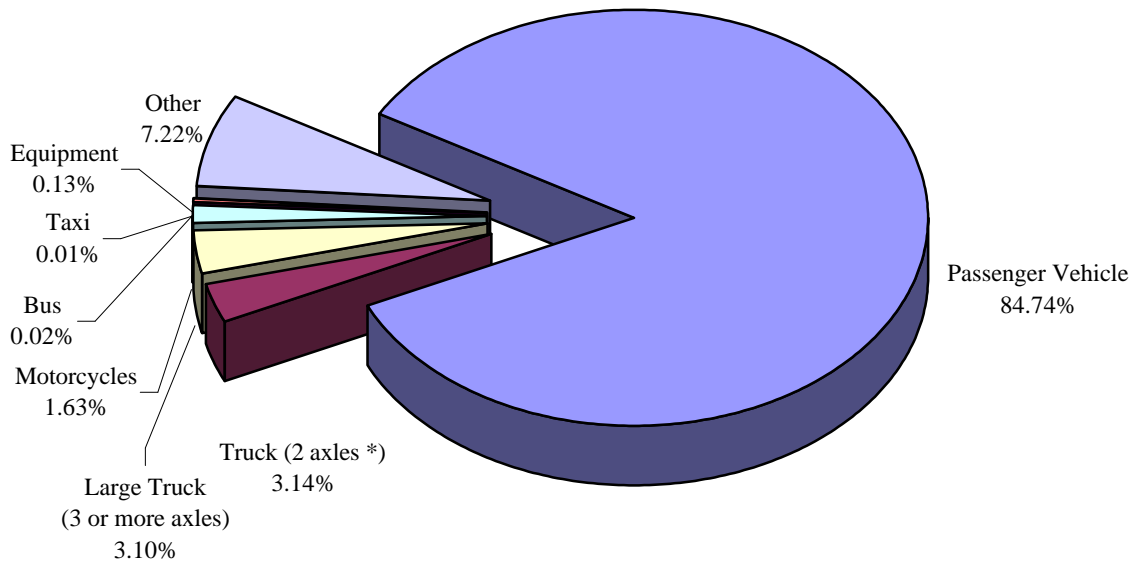
Vehicle Type	Number	% Total
Passenger Vehicle	1,339,387	84.74%
Truck (2 axles *)	49,656	3.14%
Large Truck (3 or more axles)	49,021	3.10%
Motorcycles	25,705	1.63%
Bus	390	0.02%
Taxi	222	0.01%
Equipment	2,093	0.13%
Other	114,041	7.22%
TOTAL	1,580,515	100.00%

* Pick-Up Trucks are Classified as Passenger Vehicles

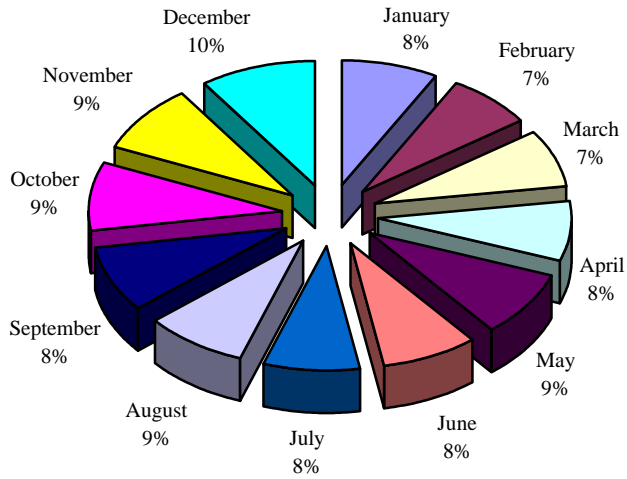
Type of Vehicle Involved in Accidents



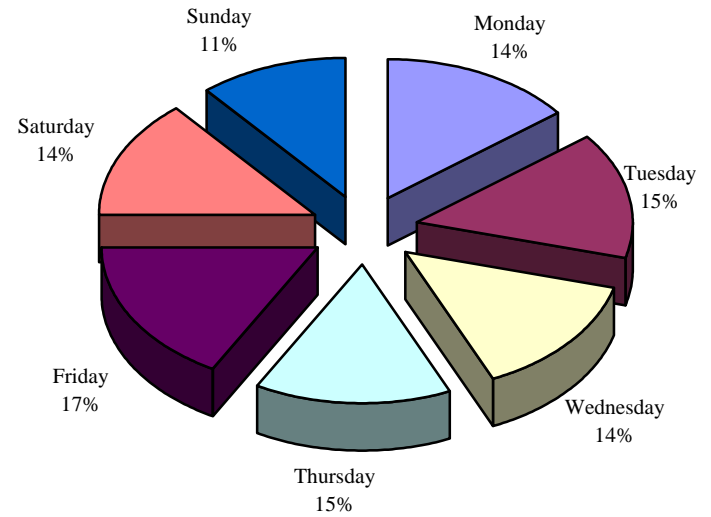
Type of Vehicle Registered in West Virginia



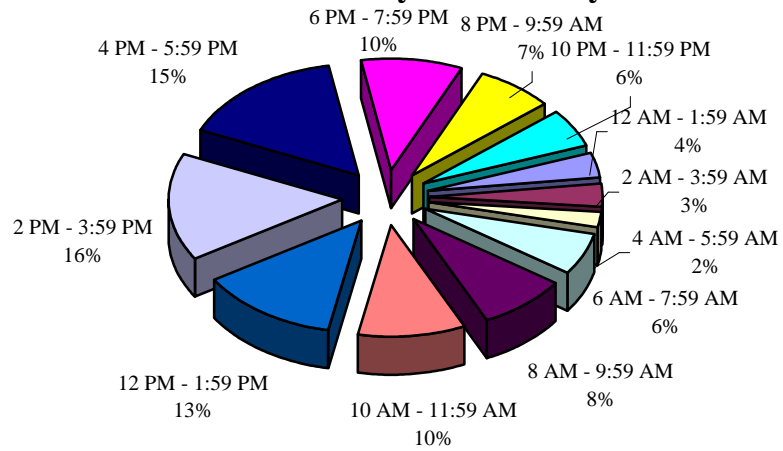
Accidents by Month



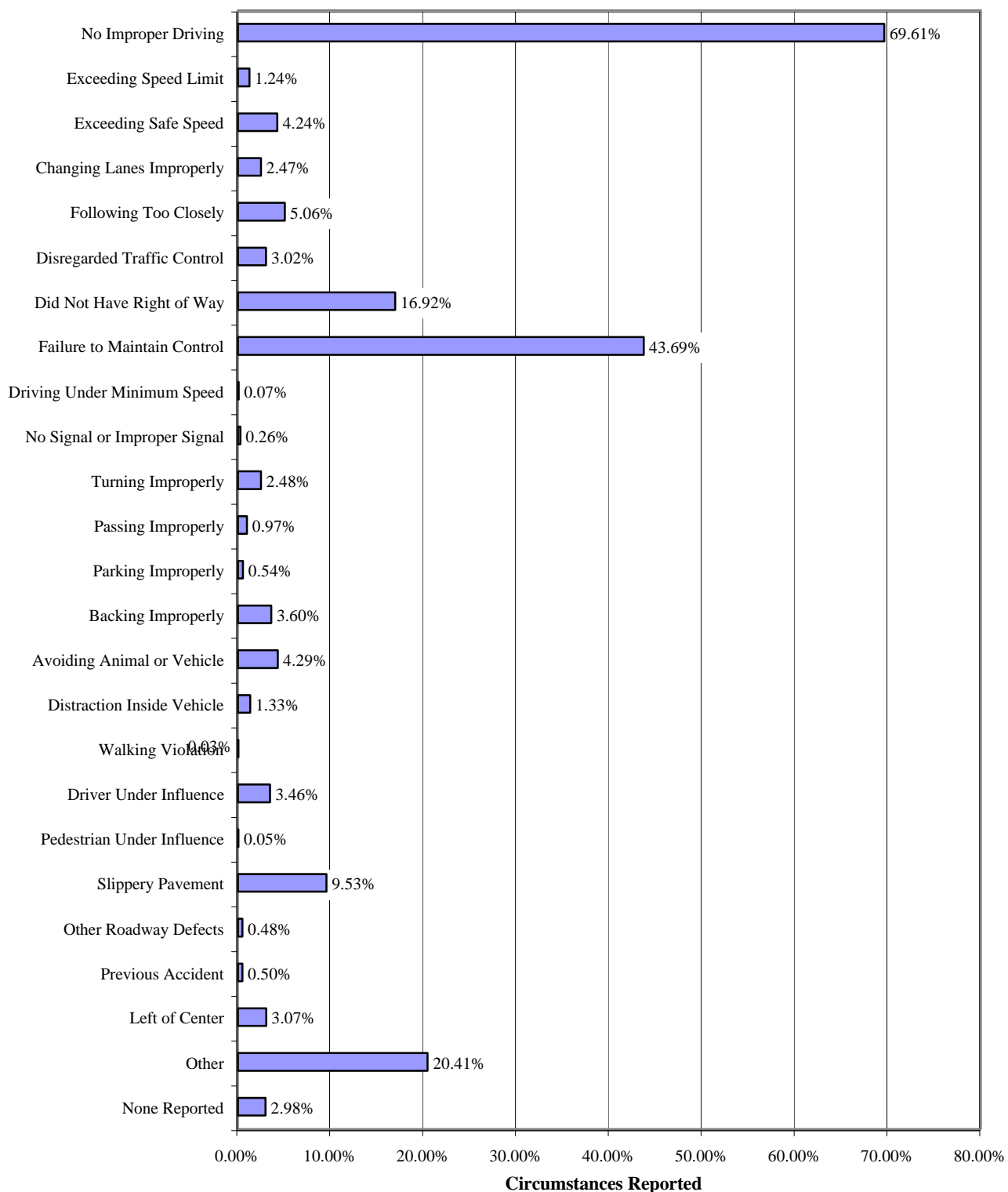
Accidents by Day of Week



Accidents by Time of Day

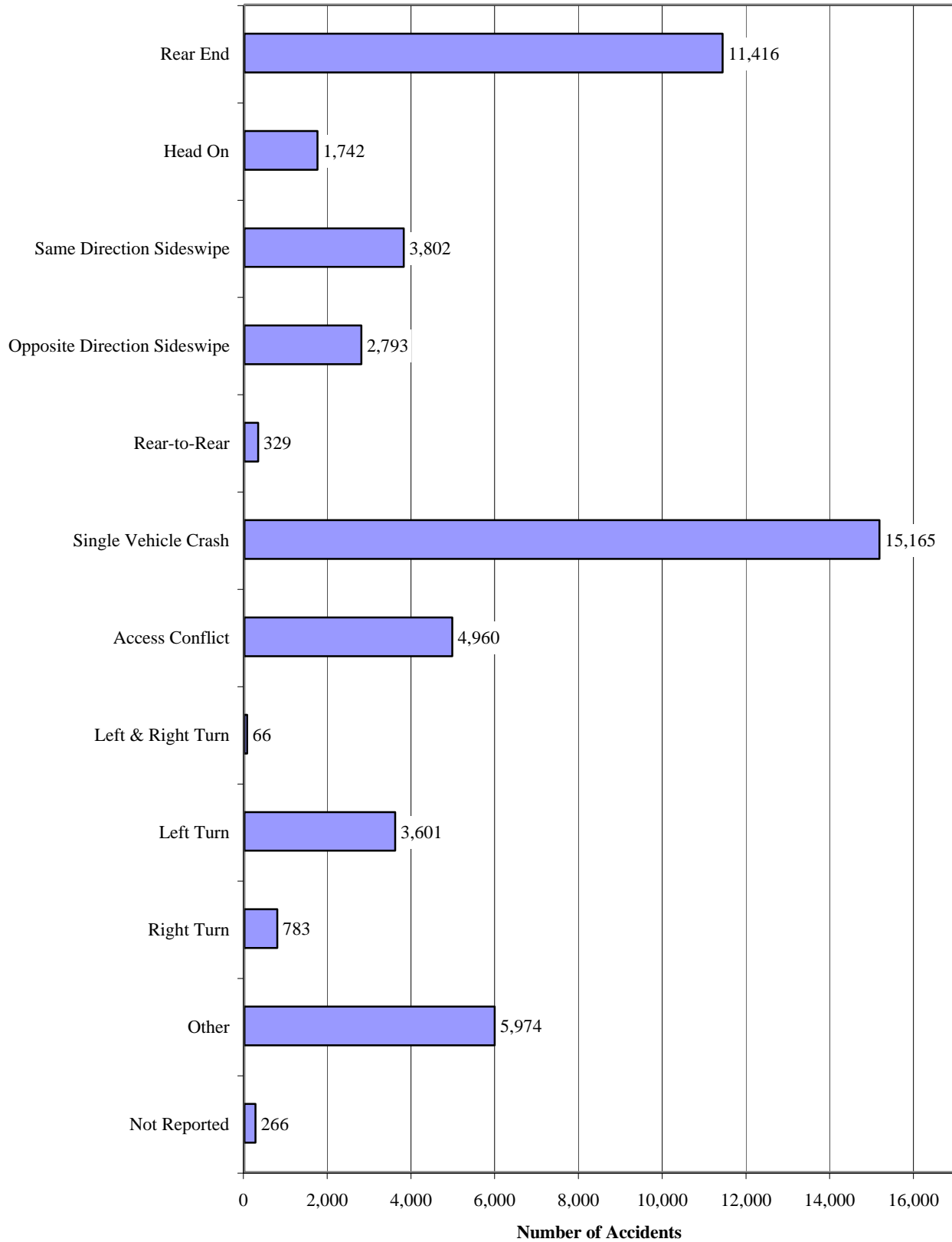


Circumstances Contributing to Traffic Accidents



NOTE: Percentages Do Not total 100%, because each vehicle may have multiple Contributing Circumstances.

Manner of Collision



Most Harmful Event

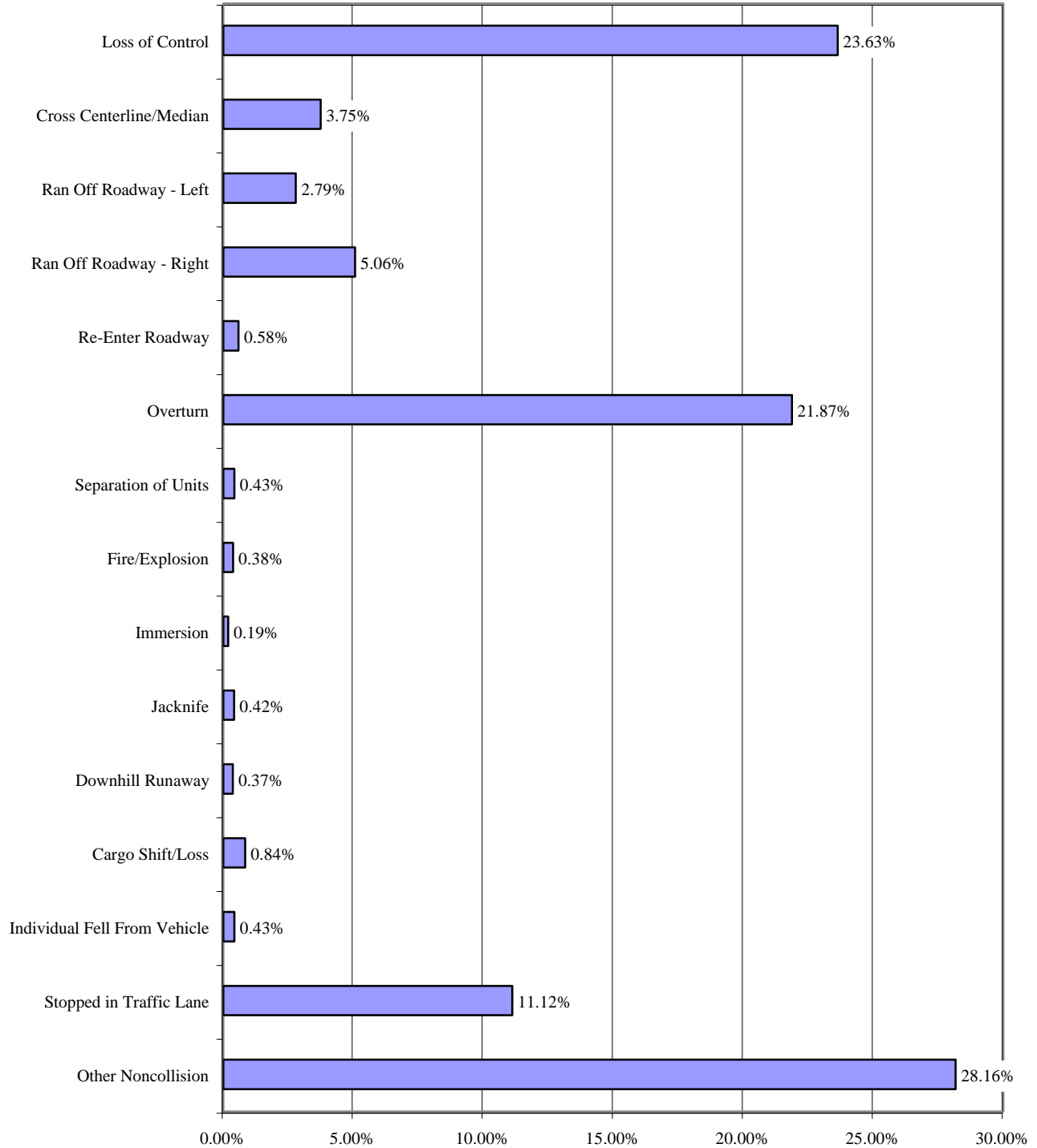
The following three (3) pages show the occurrence of accident events as the Most Harmful Event. The Most Harmful Event is determined by the reporting officer to be the accident event, which can be, contributed most to the overall severity of the accident. Most Harmful Events can be divided into three (3) categories:

- Non-Collision Events are any accident event not involving the striking of an object in or near the roadway.
- Non-Fixed Object Accident Events involve hitting any object, located on or near the roadway, which is not permanently affixed to that location.
- Fixed Object Accident Events involve striking any object, located on or near the roadway, which is permanently fixed to this location.

Each vehicle involved in an accident may be assigned one (1) Most Harmful Event, at the discretion of the reporting officer.

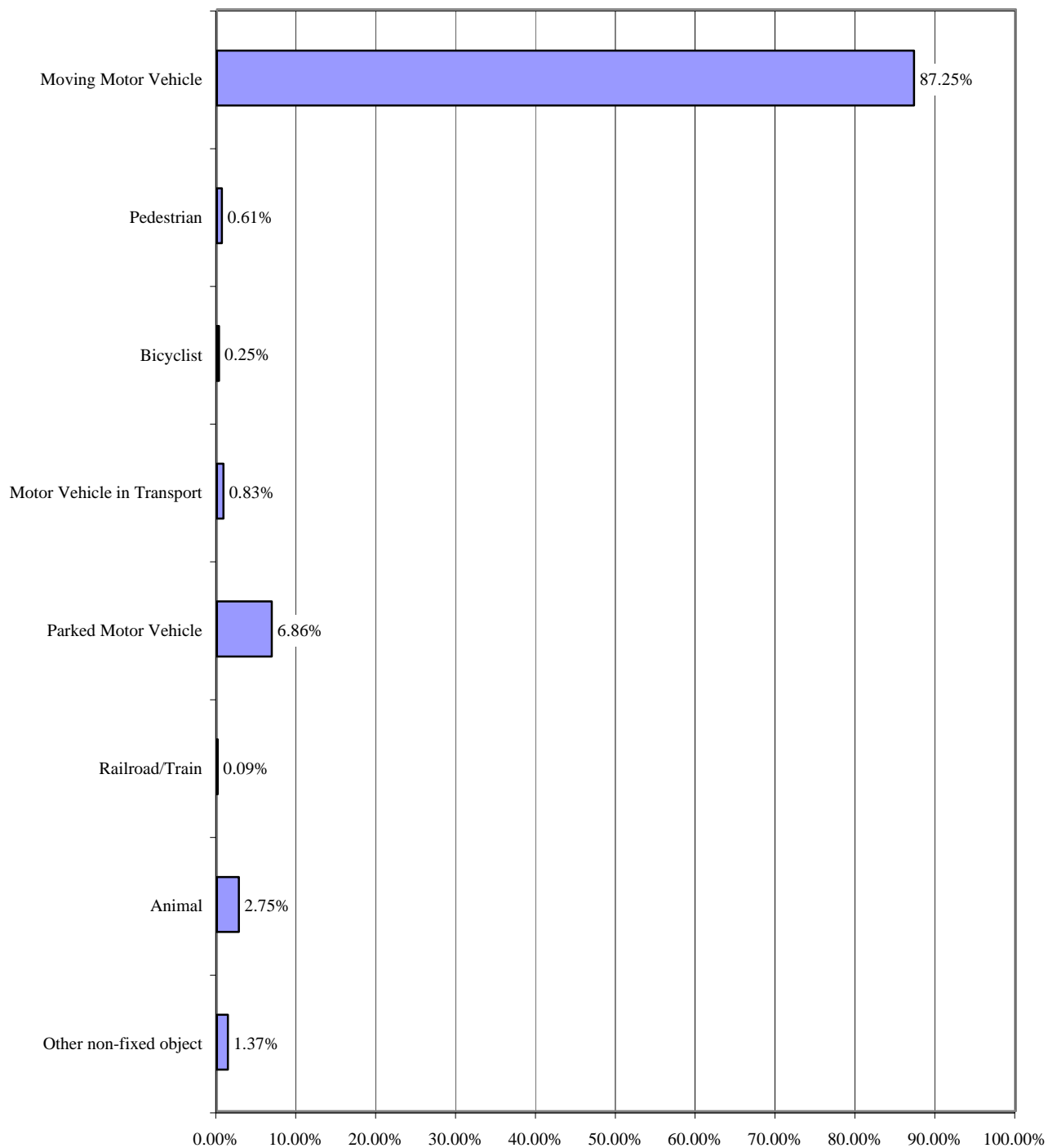
There were a total of 88,235 vehicles involved in accidents in West Virginia, during 2000. Of those, a Most Harmful Event was reported for 82,062 vehicles.

Percent of Non-Collision Accident Events* as Most Harmful Event



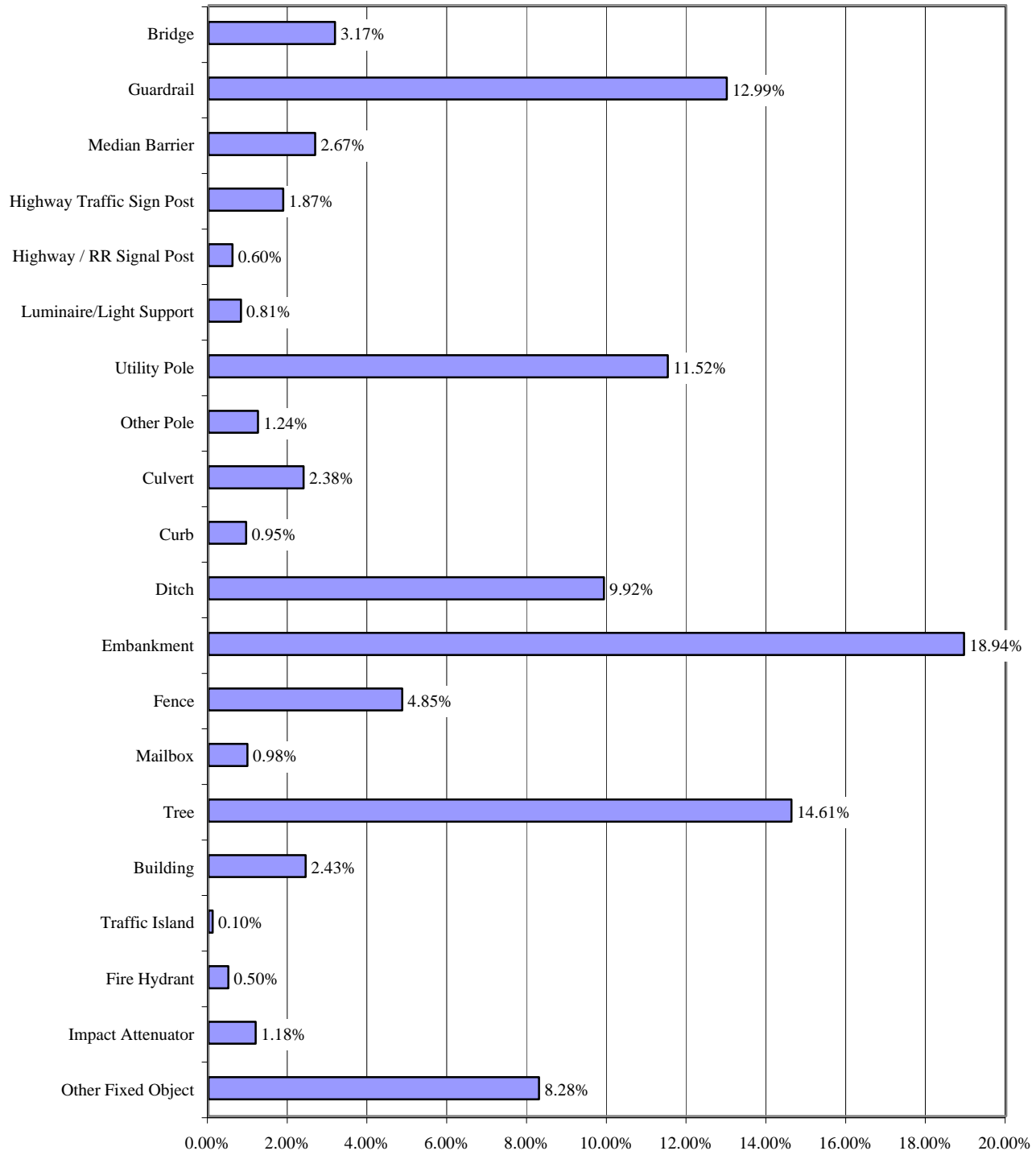
There were a total of 9,580 vehicles with Non-Collision Events reported as the Most Harmful Event.

Percent of Collisions with a Non-Fixed Object* as Most Harmful Event



There were a total of 62,861 vehicles for which, a Collision with a Non-Fixed Object was reported as the Most Harmful Event.

Percent of Collisions with a Fixed Object* as Most Harmful Event



There were a total of 9,681 vehicles for which, a Collision with a Fixed Object was reported as the Most Harmful Event.

Statewide Average Accident Rates* 1998 – 2000

Highway Type	Accident Rate	Injury Rate	PDO** Accident Rate	Fatality Rate
Total Interstate	68	35	44	1.05
Rural Interstate	63	37	39	1.08
Urban Interstate	79	33	55	0.71
Total Primary (US and WV Routes)	218	128	135	2.21
Rural Primary	197	132	112	3.11
Urban Primary	335	161	229	0.94
County & Local Routes (Over 500 ADT***)	249	140	155	1.69
Statewide Total	282	145	186	2.30

* Three Year Rates per Hundred Million Vehicle Miles Traveled – 1999 Actual – Transportation Planning Division

** Property Damage Only

*** Average Daily Traffic

Statewide Accident Totals 2000

Highway Type	Accidents	Injury Accidents	Fatal Accidents	Property Damage Only Accidents
Total Interstate	4,344	1,505	54	2,785
Rural Interstate	3,453	1,297	46	2,160
Urban Interstate	891	258	8	625
Total Primary	25,171	9,384	222	15,565
Rural Primary	14,180	5,943	193	8,044
Urban Primary	10,991	3,441	29	7,521
County & Local Routes (Over 500 ADT*)	11,622	4,322	67	7,233
Statewide Total	50,897	17,009	357	33,531

* Average Daily Traffic

**Driver Information
2000 Accident Data**

Accidents by Age of Driver

Age of Driver	Number	% Total
14 or Younger	128	0.1%
15	149	0.2%
16	2,022	2.3%
17	2,636	3.0%
18 - 20	9,246	10.5%
21 -29	17,296	19.6%
30 - 39	14,700	16.7%
40 - 49	13,131	14.9%
50 - 59	8,562	9.7%
60 - 69	4,722	5.4%
70 or Older	4,959	5.6%
Not Reported	10,668	12.1%
TOTAL	88,219	100.00%

Accidents by Gender of Driver

Gender of Driver	Number	% Total
Male	45,786	51.9%
Female	31,597	35.8%
Not Reported	10,836	12.3%
TOTAL	88,219	100.00%

Accidents by Age & Gender of Driver

Age of Driver	Female		Male	
	Number	% Total	Number	% Total
14 or Younger	49	0.06%	78	0.10%
15	68	0.09%	81	0.11%
16	858	1.11%	1,151	1.49%
17	1,074	1.39%	1,547	2.01%
18 - 20	3,697	4.80%	5,480	7.12%
21 -29	7,183	9.33%	10,002	12.99%
30 - 39	6,190	8.04%	8,401	10.91%
40 - 49	5,461	7.09%	7,559	9.82%
50 - 59	3,200	4.16%	5,310	6.90%
60 - 69	1,800	2.34%	2,882	3.74%
70 or Older	1,888	2.45%	3,038	3.95%
TOTAL	31,468	40.87%	45,529	59.13%

Age or Gender Not Reported 11,222

Accidents by Driver Action

Driver Action	Number	% of Total
Going Straight Ahead	48,171	54.60%
Turning Right	2,978	3.38%
Turning Left	8,178	9.27%
U-Turning	103	0.12%
Changing Lanes	1,000	1.13%
Passing	537	0.61%
Parking	304	0.34%
Parked	4,299	4.87%
Backing	2,416	2.74%
Unknown	20,233	22.93%
TOTAL	88,219	100.00%

Accidents by Condition of the Driver

Driver Condition	Number	% of Total
Normal	69,583	78.88%
Fatigued	377	0.43%
Asleep	391	0.44%
Ill	188	0.21%
Drinking	2,670	3.03%
Medication	220	0.25%
Other	929	1.05%
Unknown	13,861	15.71%
TOTAL	88,219	100.00%

Environmental conditions

2000 Accident Data

Accidents by Lighting Condition

Lighting	Number	% Total
Daylight	34,538	67.86%
Dark	10,493	20.62%
Dark w/ Artificial Lighting	3,225	6.34%
Dusk	1,210	2.38%
Dawn	652	1.28%
Unknown	779	1.53%
TOTAL	50,897	100.00%

Accidents by Weather Condition

Weather	Number	% Total
Clear	25,078	49.27%
Cloudy	15,440	30.34%
Raining	6,431	12.64%
Fog, Smog	511	1.00%
Snowing	2,334	4.59%
Sleeting	265	0.52%
Hailing	2	0.00%
Crosswinds	14	0.03%
Unknown	822	1.62%
TOTAL	50,897	100.00%

Accidents by Traffic Control Condition

Traffic Control	Number	% Total
Stop Sign	4,936	9.70%
Traffic Signal	6,327	12.43%
Yield Sign	489	0.96%
Officer, Flagman	169	0.33%
RR Gates, Signals	70	0.14%
Workzone	512	1.01%
School Zone	52	0.10%
None*	37,392	73.47%
Other	863	1.70%
Unknown	87	0.17%
TOTAL	50,897	100.00%

* Reporting Agency Indicated No Specific Traffic Control Condition

Accidents by Roadway Characteristic

Roadway Characteristic	Number	% Total
Straight and Level	23,824	46.81%
Straight and Grade	9,541	18.75%
Straight at Hillcrest	1,198	2.35%
Curve and Level	5,553	10.91%
Curve and Grade	7,678	15.09%
Curve at Hillcrest	582	1.14%
Straight and Rolling	227	0.45%
Sag Curve	94	0.18%
Unknown	2,200	4.32%
TOTAL	50,897	100.00%

Accidents by Roadway Surface Condition

Road Surface Condition	Number	% Total
Dry	34,976	68.72%
Wet	11,617	22.82%
Snow	2,032	3.99%
Ice	1,015	1.99%
Muddy	49	0.10%
Hazardous Material	11	0.02%
Other	152	0.30%
Unknown	1,045	2.05%
TOTAL	50,897	100.00%

Accidents by Roadway Type

Roadway Type	Number	% Total
Blacktop	45,515	89.43%
Concrete	3,300	6.48%
Brick	204	0.40%
Gravel	799	1.57%
Dirt	160	0.31%
Other	121	0.24%
Unknown	798	1.57%
TOTAL	50,897	100.00%

Injury Severity 2000 Accident Data

Severity of Injuries Received in Accidents

Injury Severity	Number	% Total
Fatality	415	0.34%
Type A Injury	8,174	6.74%
Type B Injury	5,566	4.59%
Type C Injury	12,297	10.14%
No Injury	94,857	78.19%
TOTAL	121,309	100.00%

Injury Classifications

Type A Injury - Bleeding Wound, Distorted Member, or Had to be Carried from the Scene

Type B Injury - Bruises, Abrasions, Swelling, Limping, etc.

Type C Injury - No Visible Injury, But Complaint of Pain or Momentary Unconsciousness.

Severity of Injuries by Age

Age	Fatality		Type A Injury		Type B Injury		Type C Injury		No Injury		TOTAL	
	Number	% Total	Number	% Total	Number	% Total	Number	% Total	Number	% Total	Number	% Total
14 or Younger	28	0.02%	605	0.50%	530	0.44%	812	0.67%	9,804	8.08%	11,779	9.71%
15	2	0.00%	135	0.11%	81	0.07%	153	0.13%	1,210	1.00%	1,581	1.30%
16	12	0.01%	364	0.30%	223	0.18%	352	0.29%	2,790	2.30%	3,741	3.08%
17	5	0.00%	284	0.23%	259	0.21%	396	0.33%	3,383	2.79%	4,327	3.57%
18 to 20	39	0.03%	1,010	0.83%	762	0.63%	1,366	1.13%	10,015	8.26%	13,192	10.87%
21 to 29	81	0.07%	1,674	1.38%	1,202	0.99%	2,445	2.02%	17,352	14.30%	22,754	18.76%
30 to 39	61	0.05%	1,253	1.03%	776	0.64%	2,088	1.72%	11,083	9.14%	15,261	12.58%
40 to 49	78	0.06%	1,086	0.90%	649	0.53%	1,828	1.51%	12,409	10.23%	16,050	13.23%
50 to 59	37	0.03%	642	0.53%	379	0.31%	1,199	0.99%	8,279	6.82%	10,536	8.69%
60 to 69	21	0.02%	381	0.31%	230	0.19%	633	0.52%	4,802	3.96%	6,067	5.00%
70 or Older	51	0.04%	517	0.43%	272	0.22%	548	0.45%	5,236	4.32%	6,624	5.46%
Not Reported	0	0.00%	223	0.18%	203	0.17%	477	0.39%	8,494	7.00%	9,397	7.75%
TOTAL	415	0.34%	8,174	6.74%	5,566	4.59%	12,297	10.14%	94,857	78.19%	121,309	100.00%

Severity of Injuries by Gender

Gender	Fatality		Type A Injury		Type B Injury		Type C Injury		No Injury		TOTAL	
	Number	% Total	Number	% Total	Number	% Total	Number	% Total	Number	% Total	Number	% Total
Female	134	0.11%	3,680	3.03%	2,454	2.02%	6,752	5.57%	39,341	32.43%	52,361	43.16%
Male	281	0.23%	4,353	3.59%	3,013	2.48%	5,357	4.42%	51,733	42.65%	64,737	53.37%
Not Reported	0	0.00%	141	0.12%	99	0.08%	188	0.15%	3,783	3.12%	4,211	3.47%
TOTAL	415	0.34%	8,174	6.74%	5,566	4.59%	12,297	10.14%	94,857	78.19%	121,309	100.00%

Severity of Injuries by Highway Classification

Highway Classification	Fatality		Type A Injury		Type B Injury		Type C Injury		No Injury		TOTAL	
	Number	% Total	Number	% Total	Number	% Total	Number	% Total	Number	% Total	Number	% Total
Interstate	67	0.06%	754	0.62%	571	0.47%	891	0.73%	7,693	6.34%	9,976	8.22%
US	111	0.09%	2,171	1.79%	1,228	1.01%	3,558	2.93%	24,522	20.21%	31,590	26.04%
WV	144	0.12%	2,403	1.98%	1,631	1.34%	3,835	3.16%	25,406	20.94%	33,419	27.55%
County	79	0.07%	2,250	1.85%	1,642	1.35%	2,605	2.15%	19,401	15.99%	25,977	21.41%
City	8	0.01%	429	0.35%	377	0.31%	1,179	0.97%	13,855	11.42%	15,848	13.06%
Other	6	0.00%	167	0.14%	117	0.10%	229	0.19%	3,980	3.28%	4,499	3.71%
TOTAL	415	0.34%	8,174	6.74%	5,566	4.59%	12,297	10.14%	94,857	78.19%	121,309	100.00%

* Interstate, US, WV, and County Routes are Maintained by the State
City Streets are Non-State Maintained

First Aid Provided By

First Aid Provider	Number	% Total
None	93,252	76.87%
Police	136	0.11%
EMT	9,502	7.83%
Doctor / Nurse	1,533	1.26%
Rescue Squad	4,790	3.95%
Helicopter Crew	114	0.09%
Paramedic	8,761	7.22%
Unknown	3,221	2.66%
TOTAL	121,309	100%

Fatal Accidents 2000 Accident Data

Fatalities by Age

Age	Number	% Total
14 or Younger	28	6.75%
15	2	0.48%
16	12	2.89%
17	5	1.20%
18 to 20	39	9.40%
21 to 29	81	19.52%
30 to 39	61	14.70%
40 to 49	78	18.80%
50 to 59	37	8.92%
60 to 69	21	5.06%
70 or Older	51	12.29%
TOTAL	415	100.00%

Fatalities by Gender

Gender	Number	% Total
Female	134	32.29%
Male	281	67.71%
TOTAL	415	100.00%

Fatalities by Type of Occupant Protection Used

Occupant Protection	Number	% Total
None Installed	7	1.69%
None Used	190	45.78%
Lap Belt Only	0	0.00%
Shoulder Belt Only	1	0.24%
Lap and Shoulder Belts	89	21.45%
Child Safety Seat	1	0.24%
Helmet, Glasses / Shield	13	3.13%
Unknown	114	27.47%
TOTAL	415	100.00%

Fatal Accidents* by Age of Driver

Age	Number	% Total
14 or Younger	0	0.00%
15	1	0.20%
16	12	2.41%
17	9	1.81%
18 to 20	52	10.44%
21 to 29	109	21.89%
30 to 39	89	17.87%
40 to 49	88	17.67%
50 to 59	60	12.05%
60 to 69	26	5.22%
70 or Older	45	9.04%
Not Reported	7	1.41%
TOTAL	498	100.00%

* 357 Fatal Accidents with 498 Drivers

Fatal Accidents* by Gender of Driver

Gender	Number	% Total
Female	126	25.30%
Male	366	73.49%
Not Reported	6	1.20%
TOTAL	498	100.00%

* 357 Fatal Accidents with 498 Drivers

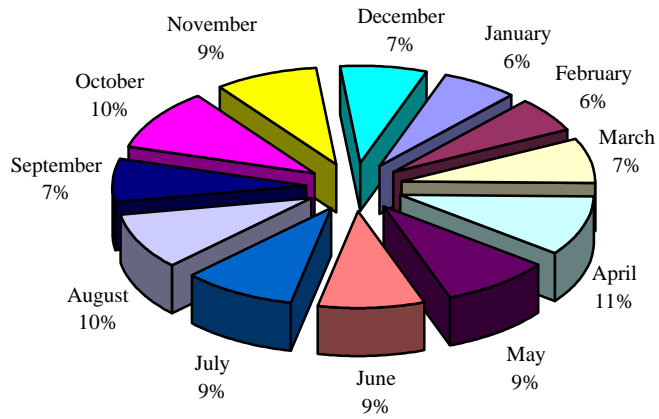
Fatal Accidents by Age & Gender of Driver

Age of Driver	Female		Male	
	Number	% Total	Number	% Total
14 or Younger	0	0.00%	0	0.00%
15	0	0.00%	1	0.20%
16	3	0.61%	9	1.83%
17	1	0.20%	8	1.63%
18 - 20	12	2.44%	40	8.15%
21 -29	36	7.33%	73	14.87%
30 - 39	23	4.68%	66	13.44%
40 - 49	20	4.07%	68	13.85%
50 - 59	17	3.46%	43	8.76%
60 - 69	8	1.63%	18	3.67%
70 or Older	6	1.22%	39	7.94%
TOTAL	126	25.66%	365	74.34%

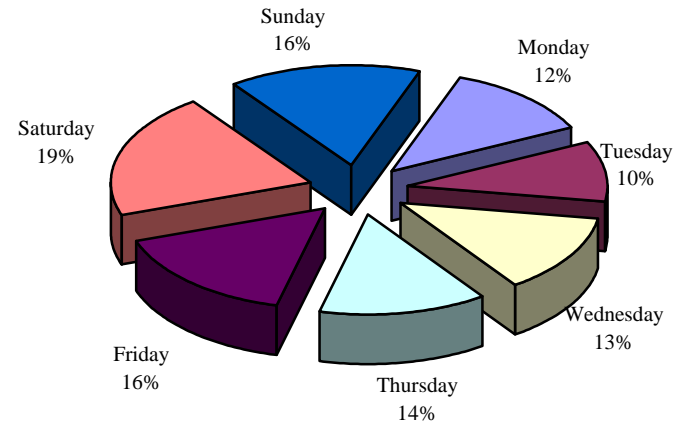
Age or Gender Not Reported

7

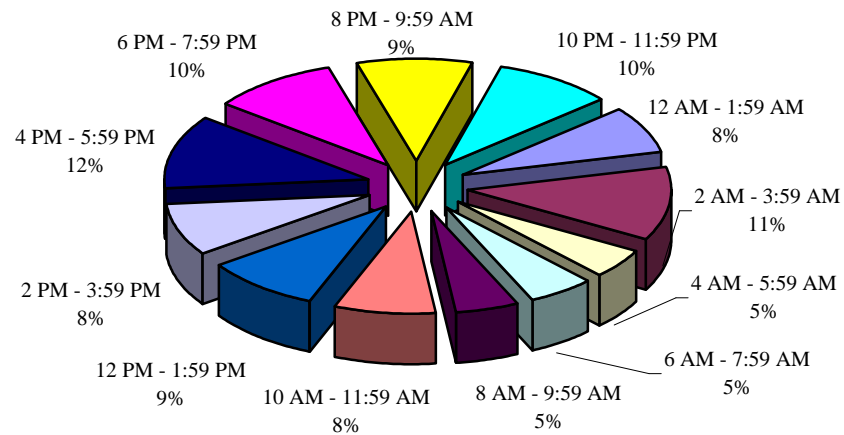
Fatal Accidents by Month



Fatal Accidents by Day



Fatal Accidents by Time of Day



**Fatal Accidents
by Highway Classification**

Highway Classification	Number	% Total
Interstate	54	15.13%
US	93	26.05%
WV	129	36.13%
County	67	18.77%
City	8	2.24%
Other	6	1.68%
TOTAL	357	100.00%

* Interstate, US, WV, and County Routes are State Maintained
City Streets are Non-State Maintained

**Fatal Accidents
by Lighting Condition**

Lighting Condition	Number	% Total
Daylight	175	49.02%
Dark	147	41.18%
Dark with Artificial Light	16	4.48%
Dusk	11	3.08%
Dawn	7	1.96%
Unknown	1	0.28%
TOTAL	357	100.00%

**Fatal Accidents
by Weather Condition**

Weather	Number	% Total
Clear	183	51.26%
Cloudy	120	33.61%
Raining	33	9.24%
Fog/Smog	6	1.68%
Snowing	9	2.52%
Sleeting	2	0.56%
Hailing	0	0.00%
Crosswinds	0	0.00%
Unknown	4	1.12%
TOTAL	357	100.00%

Occupant Protection 2000 Accident Data

Type of Occupant Protection Used in Accidents

Occupant Protection	Number	% of Total
None Installed	1,164	0.96%
None Used	10,383	8.56%
Lap Belt Only	4,240	3.50%
Shoulder Belt Only	1,589	1.31%
Lap and Shoulder Belts	88,378	72.85%
Child Safety Seat	2,803	2.31%
Helmet, Glasses / Shield	348	0.29%
Unknown	12,404	10.23%
TOTAL	121,309	100.00%

Type of Occupant Protection Used by Occupant's Age

Occupant Protection	14 or Younger	15	16	17	18 to 20	21 to 29	30 to 39	40 to 49	50 to 59	60 to 69	70 or Older
Child Safety Seat	2,698	0	0	0	0	0	0	0	0	0	0
Helmet, Glasses / Shield	21	3	5	2	16	65	72	93	42	11	2
Lap and Shoulder Belts	6,107	1,097	2,761	3,299	9,844	17,132	13,925	12,731	8,492	5,002	5,370
Lap Belt Only	1,406	123	147	156	313	568	436	362	264	135	133
None Installed	196	34	33	30	97	182	144	133	95	39	36
None Used	552	169	349	462	1,641	2,430	1,573	1,192	691	347	434
Shoulder Belt Only	131	18	44	58	202	320	260	175	137	91	98
Unknown	668	137	302	320	1,079	2,057	1,622	1,364	815	442	551
TOTAL	11,779	1,581	3,641	4,327	13,192	22,754	18,032	16,050	10,536	6,067	6,624

Type of Occupant Protection Used by Occupant's Gender

Occupant Protection	Female	Male
Child Safety Seat	1,358	1,409
Helmet, Glasses / Shield	63	278
Lap and Shoulder Belts	40,377	46,771
Lap Belt Only	1,791	2,386
None Installed	382	737
None Used	3,810	6,309
Shoulder Belt Only	703	871
Unknown	3,877	5,976
TOTAL	52,361	64,737

Occupant Protection: Percent Usage of Occupants by Gender

Gender	Total Occupants	Occupants Using Occupant Protection	% of Total
Female	52,361	44,292	84.59%
Male	64,737	51,715	79.88%

Severity of Occupant Injuries by Type of Occupant Protection Used

Occupant Protection	Type A Injury	Type B Injury	Type C Injury	Fatal Injury	No Injury	TOTAL
None Installed	170	107	126	7	754	1,164
None Used	1,929	942	1,277	190	6,045	10,383
Lap Belt Only	219	179	362	0	3,480	4,240
Shoulder Belt Only	91	63	174	1	1,260	1,589
Lap and Shoulder Belts	4,145	3,462	9,285	89	71,397	88,378
Child Safety Seat	82	83	134	1	2,503	2,803
Helmet, Glasses / Shield	159	82	26	13	68	348
Unknown	1,379	648	913	114	9,350	12,404
TOTAL	8,174	5,566	12,297	415	94,857	121,309

Injury Classifications

Type A Injury - Bleeding Wound, Distorted Member, or Had to be carried from the scene

Type B Injury - Bruises, Abrasions, Swelling, Limping, etc.

Type C Injury - No Visible Injury, But Complaint of Pain or Momentary Unconsciousness.

Workzone Accidents 2000 Accident Data

Age of Drivers Involved in Workzone Accidents

Age	Number	% Total
14 or Younger	1	0.11%
15	0	0.00%
16	17	1.82%
17	18	1.93%
18 to 20	78	8.36%
21 to 29	185	19.83%
30 to 39	187	20.04%
40 to 49	179	19.19%
50 to 59	116	12.43%
60 to 69	65	6.97%
70 or Older	61	6.54%
Not Reported	26	2.79%
TOTAL	933	100.00%

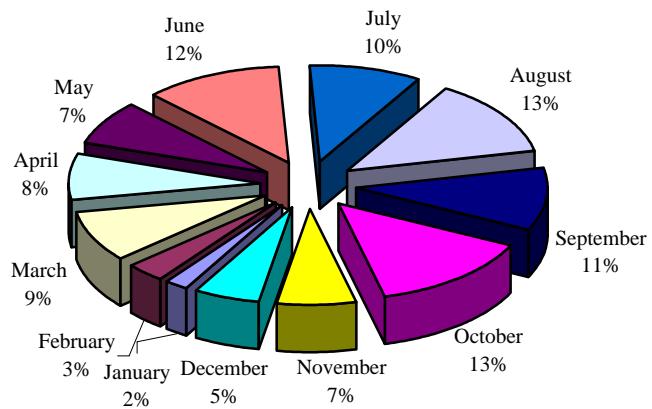
Gender of Drivers Involved in Workzone Accidents

Gender	Number	% Total
Female	316	33.87%
Male	587	62.92%
Not Reported	30	3.22%
TOTAL	933	100.00%

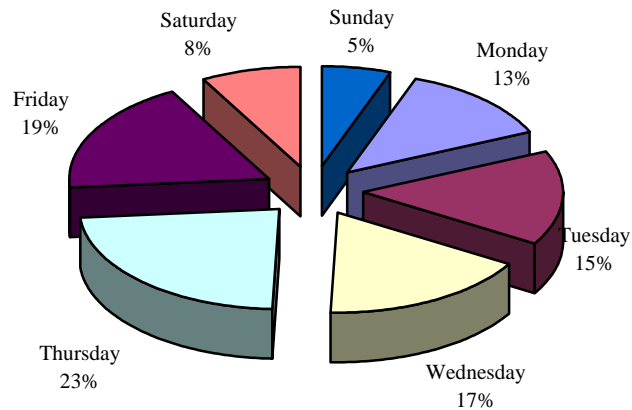
Injury Severity of Workzone Accidents

Injury Severity	Number	% Total
Type A Injury	62	4.51%
Type B Injury	41	2.98%
Type C Injury	133	9.67%
Fatal Injury	4	0.29%
No Injury	1136	82.56%
TOTAL	1376	100.00%

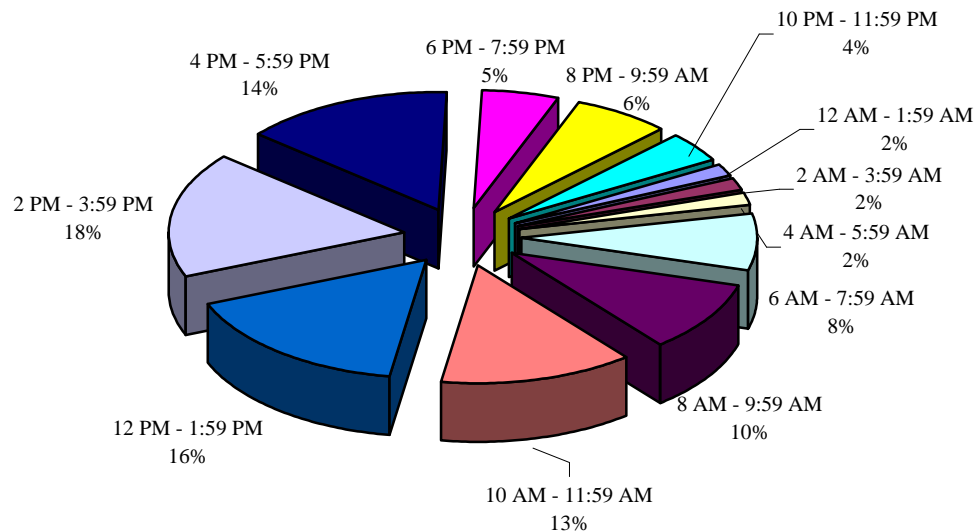
Workzone Accidents by Month



Workzone Accidents by Day



Workzone Accidents by Time of Day



**Workzone Accidents
by Highway Classification**

Highway Classification *	Number	% Total
Interstate	290	56.64%
US	91	17.77%
WV	82	16.02%
County	40	7.81%
City	8	1.56%
Other	1	0.20%
TOTAL	512	100.00%

* Interstate, US, WV, and County Routes are State Maintained
City Streets are Non-State Maintained

**Workzone Accidents
by Manner of Collision**

Manner of Collision	Number	% Total
Rear End	238	46.48%
Head On	6	1.17%
Sideswipe Same Direction	99	19.34%
Sideswipr Opposite Direction	11	2.15%
Rear to Rear	2	0.39%
Single Vehicle Crash	91	17.77%
Access Conflict	11	2.15%
Left Turn	6	1.17%
Right Turn	5	0.98%
Other	43	8.40%
TOTAL	512	100.00%

**Workzone Accidents
by Lighting Condition**

Lighting Condition	Number	% Total
Daylight	398	77.73%
Dark	87	16.99%
Dark with Artificial Light	11	2.15%
Dusk	6	1.17%
Dawn	4	0.78%
Unknown	6	1.17%
TOTAL	512	100.00%

**Workzone Accidents
by Weather Condition**

Weather	Number	% Total
Clear	311	60.74%
Cloudy	146	28.52%
Raining	42	8.20%
Fog/Smog	3	0.59%
Snowing	6	1.17%
Unknown	4	0.78%
TOTAL	512	100.00%

School Zone Accidents 2000 Accident Data

**Age of Drivers Involved in
School Zone Accidents**

Age	Number	% Total
14 or Younger	0	0.00%
15	0	0.00%
16	10	11.24%
17	10	11.24%
18 to 20	6	6.74%
21 to 29	16	17.98%
30 to 39	15	16.85%
40 to 49	14	15.73%
50 to 59	6	6.74%
60 to 69	7	7.87%
70 or Older	3	3.37%
Not Reported	2	2.25%
TOTAL	89	100.00%

**Gender of Drivers Involved in
School Zone Accidents**

Gender	Number	% Total
Female	49	55.06%
Male	40	44.94%
TOTAL	89	100.00%

**Age of Pedestrians Involved in
School Zone Accidents**

Age	Number	% Total
14 or Younger	0	0.00%
15	0	0.00%
16	1	50.00%
17	0	0.00%
18 to 20	1	50.00%
21 to 29	0	0.00%
30 to 39	0	0.00%
40 to 49	0	0.00%
50 to 59	0	0.00%
60 to 69	0	0.00%
70 or Older	0	0.00%
Not Reported	0	0.00%
TOTAL	2	100.00%

**Gender of Pedestrians Involved in
School Zone Accidents**

Gender	Number	% Total
Female	2	100.00%
Male	0	0.00%
TOTAL	2	100.00%

**Age of Those Involved* in
School Zone Accidents**

Age	Number	% Total
14 or Younger	39	23.78%
15	5	3.05%
16	16	9.76%
17	13	7.93%
18 to 20	8	4.88%
21 to 29	19	11.59%
30 to 39	15	9.15%
40 to 49	16	9.76%
50 to 59	6	3.66%
60 to 69	7	4.27%
70 or Older	3	1.83%
Not Reported	17	10.37%
TOTAL	164	100.00%

* Includes all drivers, occupants, and non-occupants

**Gender of Those Involved in
School Zone Accidents**

Gender	Number	% Total
Female	81	49.39%
Male	68	41.46%
Not Reported	15	9.15%
TOTAL	164	100.00%

**Injury Severity
of School Zone Accidents**

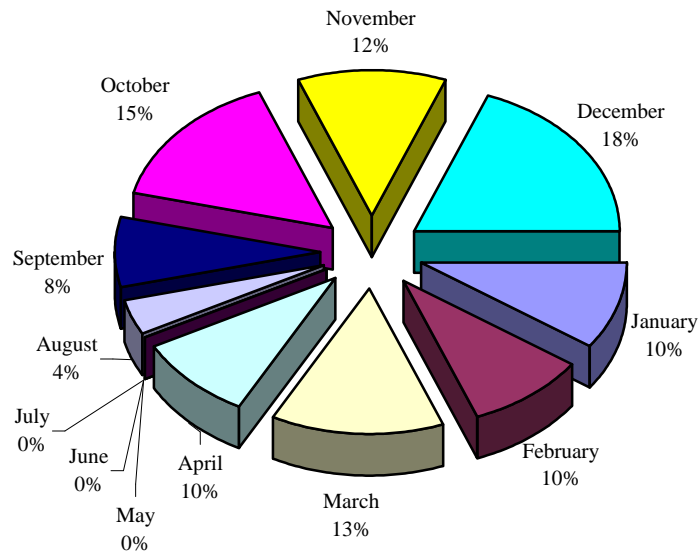
Injury Severity	Number	% Total
Type A Injury	4	2.44%
Type B Injury	2	1.22%
Type C Injury	18	10.98%
Fatal Injury	0	0.00%
No Injury	140	85.37%
TOTAL	164	100.00%

Injury Severity of School Zone Accidents by Age

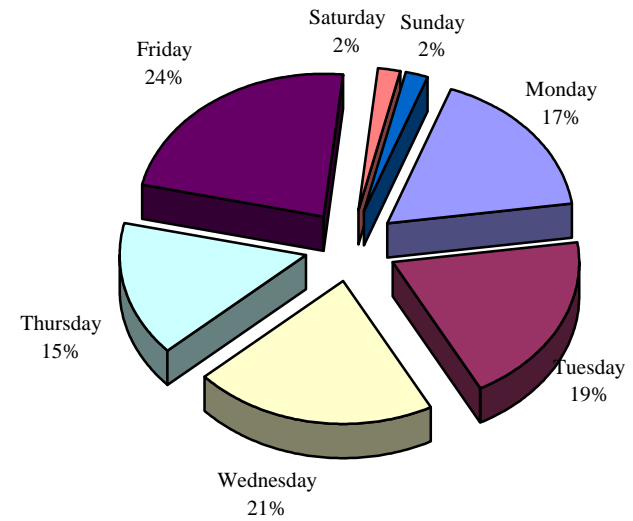
Age	Type A Injury	Type B Injury	Type C Injury	Fatal Injury	No Injury	Total
14 or Younger	0	0	5	0	34	39
15	0	0	0	0	5	5
16	1	0	0	0	15	16
17	1	0	1	0	11	13
18 to 20	0	2	0	0	6	8
21 to 29	1	0	4	0	14	19
30 to 39	0	0	3	0	12	15
40 to 49	0	0	2	0	14	16
50 to 59	1	0	1	0	4	6
60 to 69	0	0	2	0	5	7
70 or Older	0	0	0	0	3	3
TOTAL	4	2	18	0	123	147

Age Not Reported 17

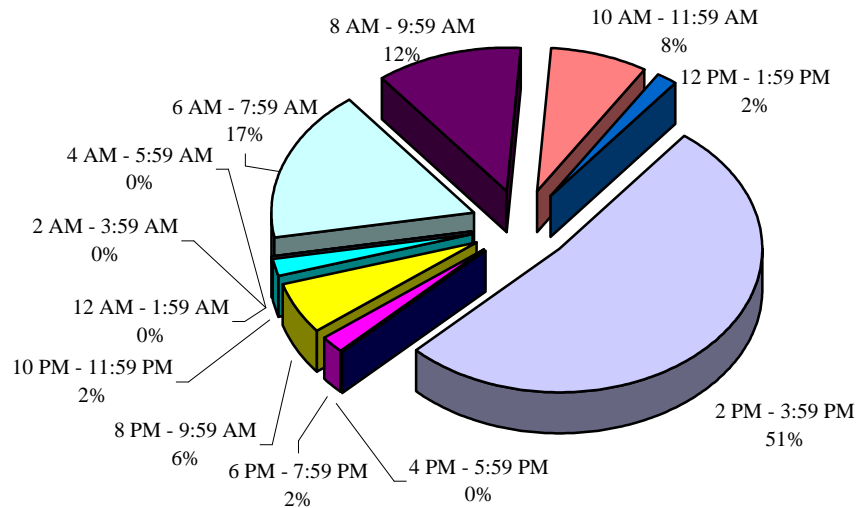
School Zone Accidents by Month



School Zone Accidents by Day



School Zone Accidents by Time of Day



**School Zone Accidents
by Highway Classification**

Highway Classification*	Number	% Total
Interstate	0	0.00%
US	11	21.15%
WV	12	23.08%
County	12	23.08%
City	8	15.38%
Unknown	9	17.31%
TOTAL	52	100.00%

* Interstate, US, WV, and County Routes are State Maintained
City Streets are Non-State Maintained

**School Zone Accidents
by Municipal or Non-Municipal Location**

Location	Number	% Total
Municipal	29	55.77%
Non-Municipal	23	44.23%
TOTAL	52	100.00%

**School Zone Accidents
by Lighting Condition**

Lighting Condition	Number	% Total
Daylight	47	90.38%
Dark	4	7.69%
Dark with Artificial Light	0	0.00%
Dusk	0	0.00%
Dawn	0	0.00%
Unknown	1	1.92%
TOTAL	52	100.00%

**School Zone Accidents
by Weather Condition**

Weather	Number	% Total
Clear	28	53.85%
Cloudy	16	30.77%
Raining	3	5.77%
Fog/Smog	1	1.92%
Snowing	4	7.69%
Sleeting	0	0.00%
Hailing	0	0.00%
Crosswinds	0	0.00%
TOTAL	52	100.00%

Pedestrian Accidents 2000 Accident Data

**Age of Pedestrians
Involved in Accidents**

Age of Pedestrian	Number	% Total
14 or Younger	75	19.23%
15	8	2.05%
16	7	1.79%
17	8	2.05%
18 to 20	21	5.38%
21 to 29	42	10.77%
30 to 39	38	9.74%
40 to 49	35	8.97%
50 to 59	25	6.41%
60 to 69	10	2.56%
70 or Older	31	7.95%
Unknown	90	23.08%
TOTAL	390	100.00%

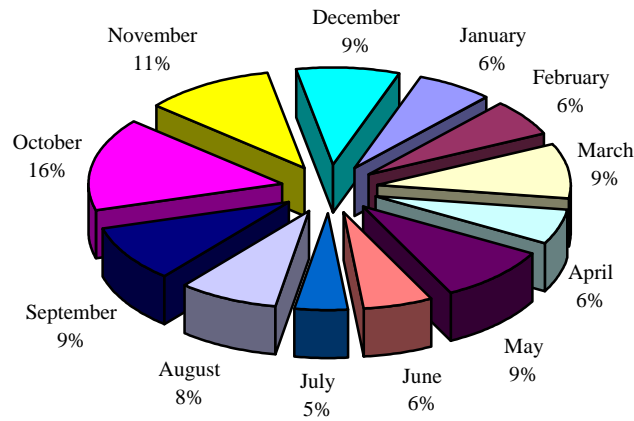
**Gender of Pedestrians
Involved in Accidents**

Gender of Pedestrian	Number	% Total
Female	121	31.03%
Male	215	55.13%
Unknown	54	13.85%
TOTAL	390	100.00%

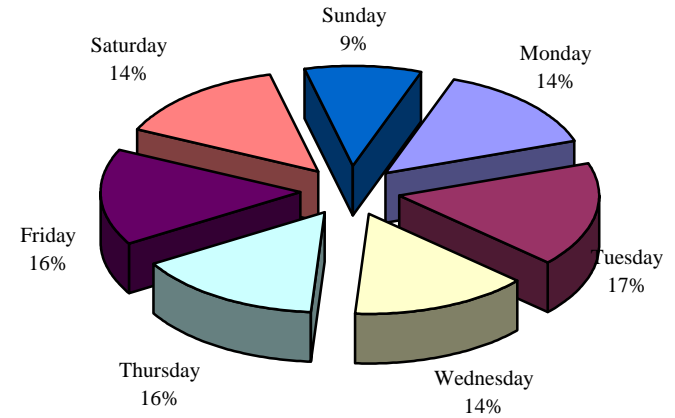
Severity of Injury to Pedestrian

Severity of Injury	Number	% Total
Type A Injury	143	36.67%
Type B Injury	97	24.87%
Type C Injury	90	23.08%
Fatal Injury	27	6.92%
No Injury	33	8.46%
TOTAL	390	100.00%

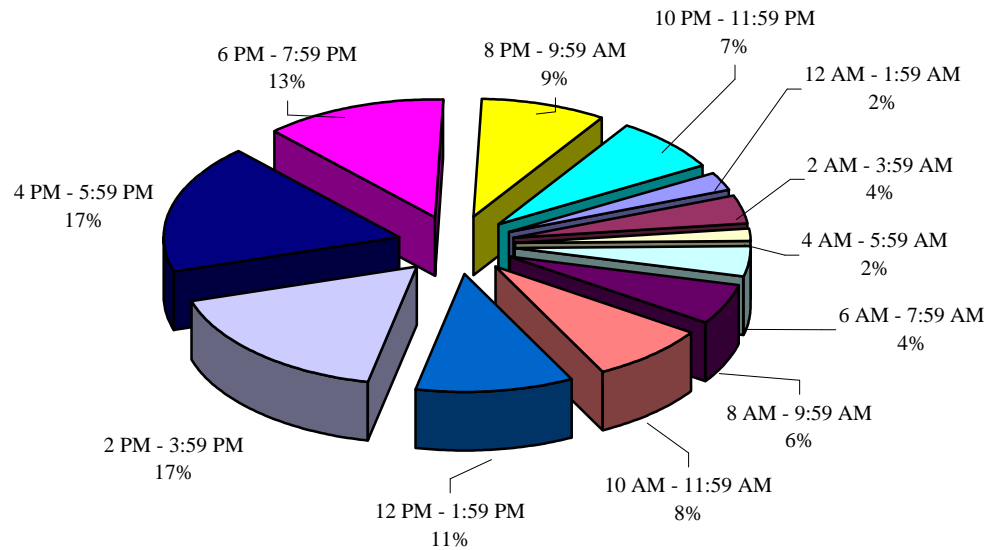
Pedestrian Accidents by Month



Pedestrian Accidents by Day



Pedestrian Accidents by Time of Day



Pedestrian Accidents by Highway Classification

Highway Classification*	Number	% Total
Interstate	5	1.34%
US	97	25.94%
WV	83	22.19%
County	51	13.64%
City	87	23.26%
Other	51	13.64%
TOTAL	374	100.00%

* Interstate, US, WV, and County Routes are State Maintained
City Streets are Non-State Maintained

Pedestrian Accidents by Municipal or Non-Municipal Location

Location	Number	% Total
Municipal	259	69.25%
Non-Municipal	115	30.75%
TOTAL	374	100.00%

Pedestrian Accidents by Lighting Condition

Lighting Condition	Number	% Total
Daylight	231	61.76%
Dark	65	17.38%
Dark with Artificial Light	56	14.97%
Dusk	16	4.28%
Dawn	2	0.53%
Unknown	4	1.07%
TOTAL	374	100.00%

Pedestrian Accidents by Weather Condition

Weather	Number	% Total
Clear	221	59.09%
Cloudy	109	29.14%
Raining	25	6.68%
Fog/Smog	5	1.34%
Snowing	8	2.14%
Sleeting	1	0.27%
Unknown	5	1.34%
TOTAL	374	100.00%

Bicycle Accidents 2000 Accident Data

**Age of Bicyclists
Involved in Accidents**

Age	Number	% Total
14 or Younger	61	44.20%
15	6	4.35%
16	4	2.90%
17	3	2.17%
18 to 20	6	4.35%
21 to 29	12	8.70%
30 to 39	10	7.25%
40 to 49	10	7.25%
50 to 59	2	1.45%
60 to 69	0	0.00%
70 or Older	2	1.45%
Unknown	22	15.94%
TOTAL	138	100.00%

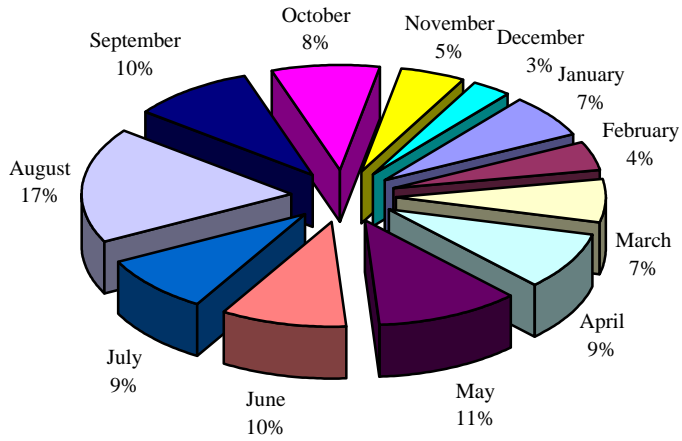
**Gender of Bicyclists
Involved in Accidents**

Gender	Number	% Total
Female	20	14.49%
Male	102	73.91%
Unknown	16	11.59%
TOTAL	138	100.00%

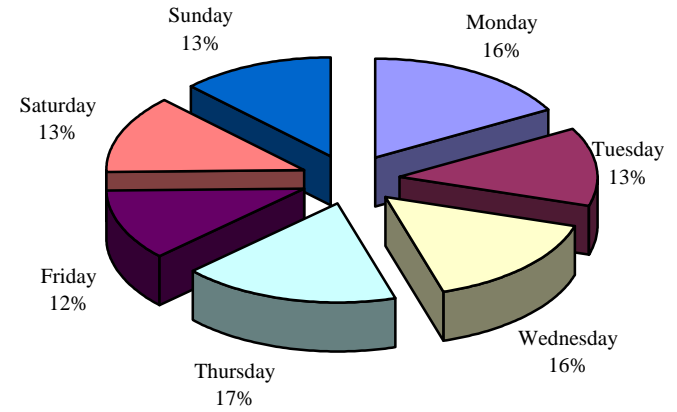
Severity of Injury to Bicyclist

Severity of Injury	Number	% Total
Type A Injury	48	34.78%
Type B Injury	47	34.06%
Type C Injury	19	13.77%
Fatal Injury	2	1.45%
No Injury	22	15.94%
TOTAL	138	100.00%

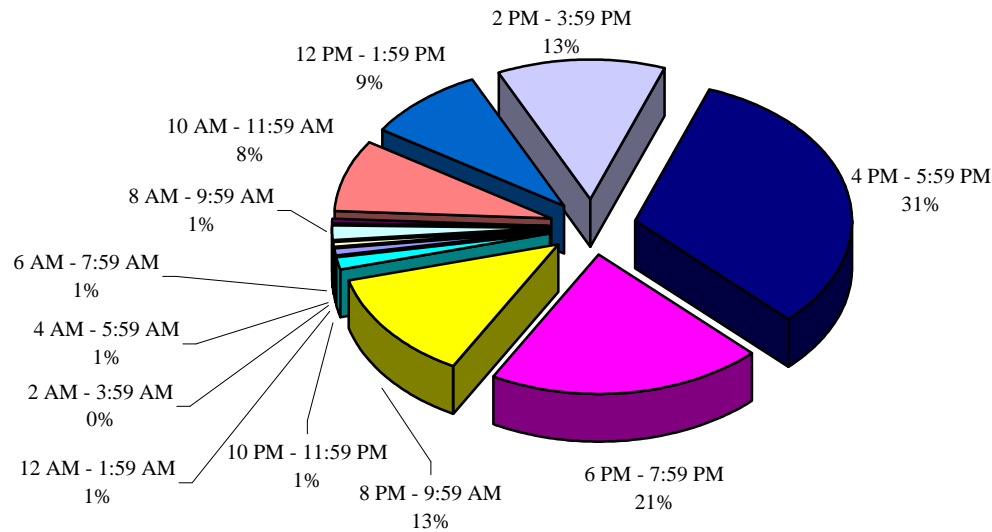
Bicycle Accidents by Month



Bicycle Accidents by Day



Bicycle Accidents by Time of Day



**Bicycle Accidents
by Highway Classification**

Highway Classification *	Number	% Total
Interstate	1	0.74%
US	24	17.78%
WV	26	19.26%
County	24	17.78%
City	58	42.96%
Other	2	1.48%
TOTAL	135	100.00%

* Interstate, US, WV, and County Routes are State Maintained
City Streets are Non-State Maintained

**Bicycle Accidents
by Municipal or Non-Municipal Location**

Location	Number	% Total
Municipal	104	77.04%
Non-Municipal	31	22.96%
TOTAL	135	100.00%

**Bicycle Accidents
by Lighting Condition**

Lighting Condition	Number	% Total
Daylight	103	76.30%
Dark	10	7.41%
Dark with Artificial Light	9	6.67%
Dusk	12	8.89%
Unknown	1	0.74%
TOTAL	135	100.00%

**Bicycle Accidents
by Weather Condition**

Weather	Number	% Total
Clear	88	65.19%
Cloudy	41	30.37%
Raining	5	3.70%
Unknown	1	0.74%
TOTAL	135	100.00%

Motorcycle Accidents 2000 Accident Data

**Age of Motorcyclists
Involved in Accident**

Age	Number	% Total
14 or Younger	32	8.00%
15	11	2.75%
16	14	3.50%
17	4	1.00%
18 to 20	28	7.00%
21 to 29	83	20.75%
30 to 39	70	17.50%
40 to 49	86	21.50%
50 to 59	40	10.00%
60 to 69	13	3.25%
70 or Older	3	0.75%
Unknown	16	4.00%
TOTAL	400	100.00%

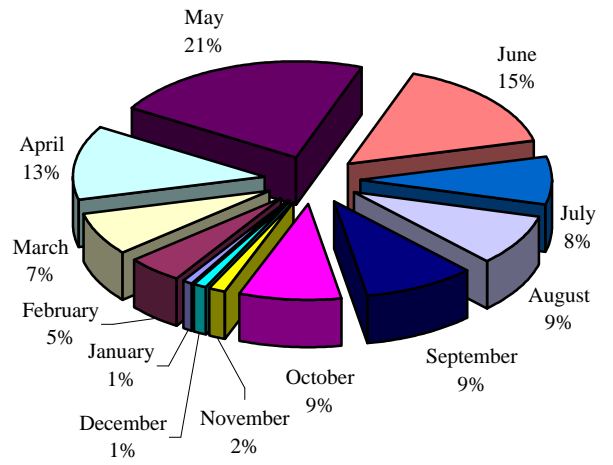
**Gender of Motorcyclists
Involved in Accidents**

Gender	Number	% Total
Female	63	15.75%
Male	332	83.00%
Unknown	5	1.25%
TOTAL	400	100.00%

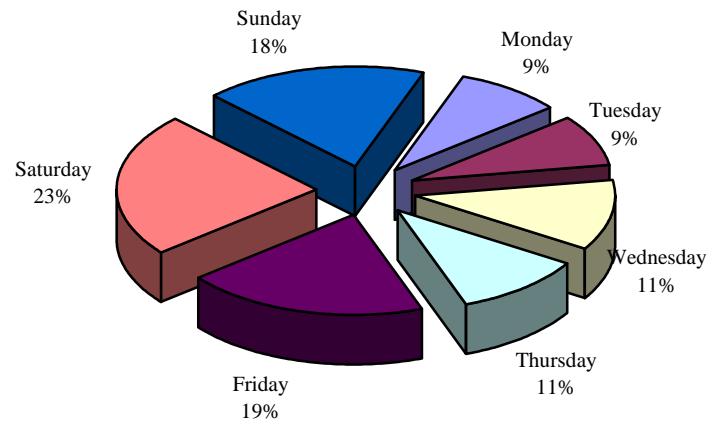
Severity of Motorcyclist Injuries

Severity of Injury	Number	% Total
Type A Injury	194	48.50%
Type B Injury	87	21.75%
Type C Injury	30	7.50%
Fatal Injury	24	6.00%
No Injury	65	16.25%
TOTAL	400	100.00%

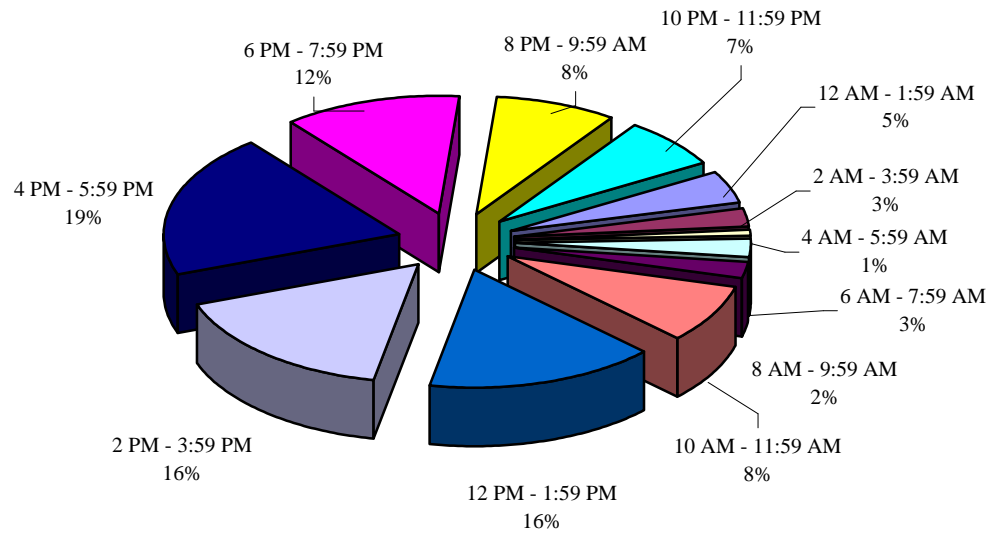
Motorcycle Accidents by Month



Motorcycle Accidents by Day



Motorcycle Accidents by Time of Day



**Motorcycle Accidents
by Highway Classification**

Highway Classification*	Number	% Total
Interstate	17	5.04%
US	80	23.74%
WV	65	19.29%
County	124	36.80%
City	28	8.31%
Other	23	6.82%
TOTAL	337	100.00%

* Interstate, US, WV, and County Routes are State Maintained
City Streets are Non-State Maintained

**Motorcycle Accidents
by Municipal or Non-Municipal Location**

Location	Number	% Total
Municipal	81	24.04%
Non-Municipal	256	75.96%
TOTAL	337	100.00%

**Motorcycle Accidents
by Lighting Condition**

Lighting Condition	Number	% Total
Daylight	259	76.85%
Dark	52	15.43%
Dark with Artificial Light	8	2.37%
Dusk	11	3.26%
Dawn	3	0.89%
Unknown	4	1.19%
TOTAL	337	100.00%

**Motorcycle Accidents
by Weather Condition**

Weather	Number	% Total
Clear	238	70.62%
Cloudy	79	23.44%
Raining	12	3.56%
Fog/Smog	2	0.59%
Snowing	1	0.30%
Unknown	5	1.48%
TOTAL	337	100.00%

Large Truck Accidents 2000 Accident Data

**Large Truck * Accidents
by Age of Driver**

Age	Number	% Total
14 or Younger	3	0.06%
15	1	0.02%
16	27	0.55%
17	39	0.79%
18 to 20	175	3.56%
21 to 29	919	18.69%
30 to 39	1,220	24.81%
40 to 49	1,155	23.49%
50 to 59	823	16.74%
60 to 69	339	6.89%
70 or Older	216	4.39%
Unknown	0	0.00%
TOTAL	4,917	100.00%

**Large Truck * Accidents
by Gender of Driver**

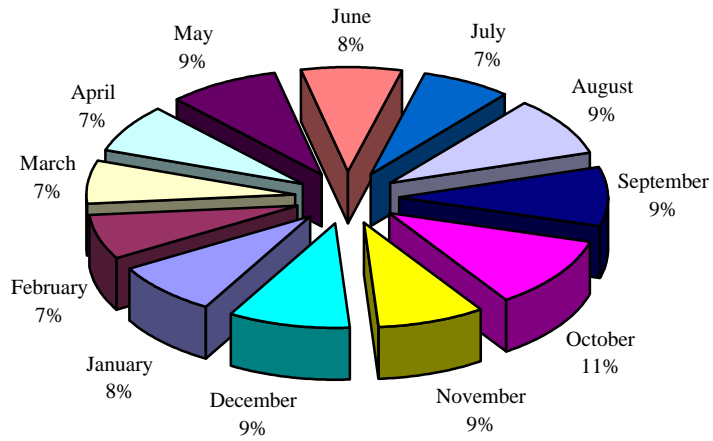
Gender	Number	% Total
Female	910	18.51%
Male	3,995	81.25%
Unknown	12	0.24%
TOTAL	4,917	100.00%

Injury Severity of Large Truck * Accidents

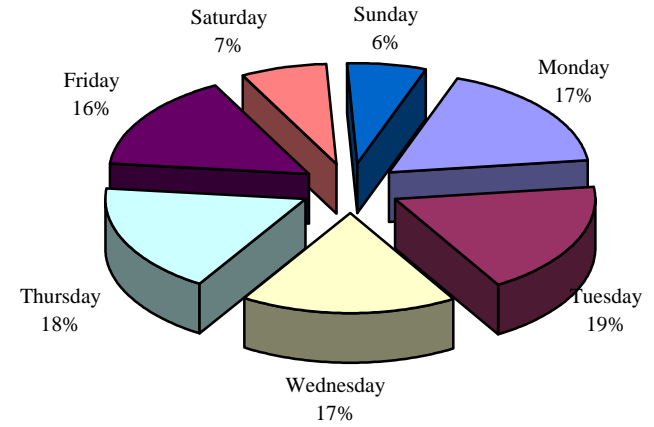
Severity of Injury	Number	% Total
Type A Injury	429	6.01%
Type B Injury	238	3.33%
Type C Injury	465	6.52%
Fatal Injury	54	0.76%
No Injury	5,951	83.38%
TOTAL	7,137	100.00%

* Large Truck includes all vehicles with 3 axles or more, including tractor trailers

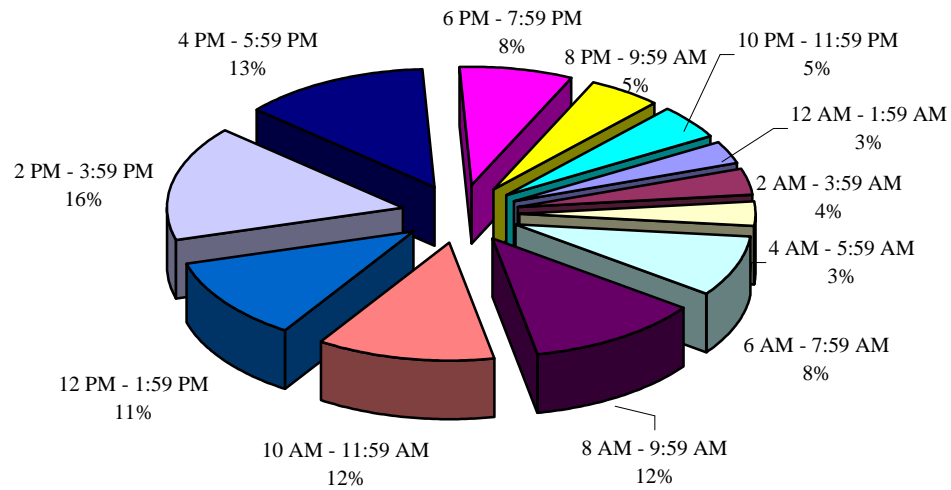
Large Truck* Accidents by Month



Large Truck* Accidents by Day



Large Truck* Accidents by Time of Day



* Large Truck includes all vehicles with 3 axles or more, including tractor trailers

**Large Truck* Accidents
by Highway Classification**

Highway Classification**	Number	% Total
Interstate	696	28.88%
US	572	23.73%
WV	473	19.63%
County	340	14.11%
City	208	8.63%
Other	121	5.02%
TOTAL	2,410	100.00%

** Interstate, US, WV, and County Routes are State Maintained
City Streets are Non-State Maintained

Percent of Large Truck Traffic*
by Highway Classification**

Highway Classification	% Truck Traffic
Interstate	19.52%
US	10.06%
WV	8.13%
County	Unavailable
City	Unavailable
Other	Unavailable

*** Based on 1999 Estimates by West Virginia Division Of Highways - Planning

* Large Truck includes all vehicles with 3 axles or more, including tractor trailers

**Large Truck* Accidents
by Lighting Condition**

Lighting Condition	Number	% Total
Daylight	1,698	70.46%
Dark	476	19.75%
Dark with Artificial Light	121	5.02%
Dusk	39	1.62%
Dawn	48	1.99%
Unknown	28	1.16%
TOTAL	2,410	100.00%

**Large Truck* Accidents
by Weather Condition**

Weather	Number	% Total
Clear	1,227	50.91%
Cloudy	708	29.38%
Raining	277	11.49%
Fog/Smog	39	1.62%
Snowing	115	4.77%
Sleeting	10	0.41%
Hailing	0	0.00%
Crosswinds	0	0.00%
Unknown	34	1.41%
TOTAL	2,410	100.00%

* Large Truck includes all vehicles with 3 axles or more, including tractor trailers

**Alcohol Related
Accidents
2000 Accident Data**

**Alcohol Related Accidents
by Age of Driver**

Age	Number	% Total
14 or Younger	4	0.10%
15	3	0.08%
16	45	1.13%
17	60	1.51%
18 to 20	429	10.77%
21 to 29	1,111	27.89%
30 to 39	922	23.14%
40 to 49	737	18.50%
50 to 59	350	8.79%
60 to 69	115	2.89%
70 or Older	76	1.91%
Not Reported	132	3.31%
TOTAL	3,984	100.00%

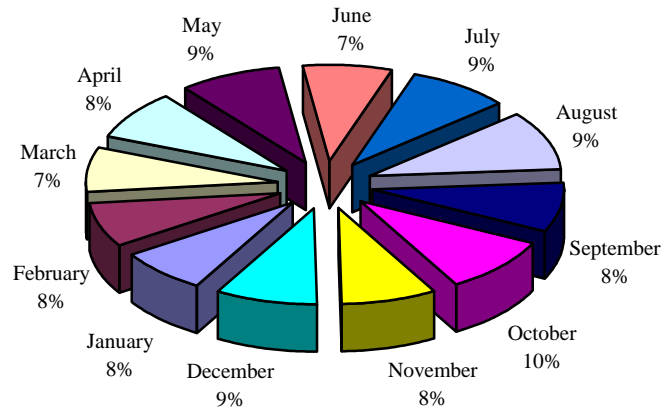
**Alcohol Related Accidents
by Gender of Driver**

Gender	Number	% Total
Female	865	21.71%
Male	2,975	74.67%
Not Reported	144	3.61%
TOTAL	3,984	100.00%

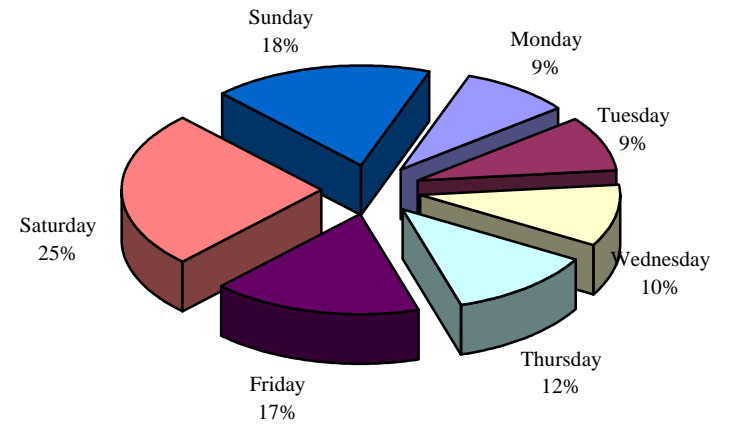
Injury Severity of Alcohol Related Accidents

Severity of Injury	Number	% Total
Type A Injury	1,121	18.58%
Type B Injury	591	9.80%
Type C Injury	564	9.35%
Fatal Injury	165	2.73%
No Injury	3,592	59.54%
TOTAL	6,033	100.00%

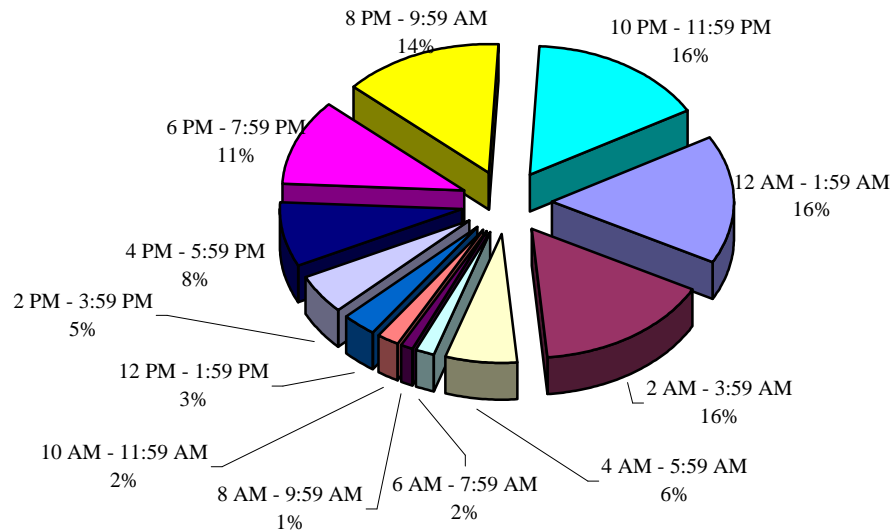
Alcohol Related Accidents by Month



Alcohol Related Accidents by Day



Alcohol Related Accidents by Time of Day



Alcohol Related Accidents by Highway Classification

Highway Classification*	Number	% Total
Interstate	175	5.90%
US	584	19.68%
WV	764	25.74%
County	944	31.81%
City	366	12.33%
Other	135	4.55%
TOTAL	2,968	100.00%

* Interstate, US, WV, and County Routes are State Maintained
City Streets are Non-State Maintained

Alcohol Related Accidents by Municipal or Non-Municipal Location

Location	Number	% Total
Municipal	946	31.87%
Non-Municipal	2,022	68.13%
TOTAL	2,968	100.00%

Alcohol Related Accidents by Lighting Condition

Lighting Condition	Number	% Total
Daylight	695	23.42%
Dark	1,641	55.29%
Dark with Artificial Light	508	17.12%
Dusk	73	2.46%
Dawn	22	0.74%
Unknown	29	0.98%
TOTAL	2,968	100.00%

Alcohol Related Accidents by Weather Condition

Weather	Number	% Total
Clear	1,569	52.86%
Cloudy	922	31.06%
Raining	285	9.60%
Fog/Smog	62	2.09%
Snowing	89	3.00%
Sleeting	10	0.34%
Unknown	31	1.04%
TOTAL	2,968	100.00%

**County and Municipal
Information
2000 Accident Data**

ECONOMIC LOSS BY COUNTY*

County	Total Accidents	Injury* Accidents	Persons Injured	Fatal Accidents	Fatal Injuries	Property Damage Only Accidents	Total Economic Loss
Barbour	276	101	166	8	9	167	\$39,499,000
Berkeley	2,074	693	1,035	14	16	1,367	\$121,115,000
Boone	653	254	413	6	7	393	\$59,682,000
Braxton	432	162	240	5	6	265	\$40,512,000
Brooke	680	200	318	3	3	477	\$26,840,000
Cabell	4,192	1,271	1,950	9	11	2,912	\$155,441,000
Calhoun	105	37	55	1	1	67	\$7,068,000
Clay	159	59	96	0	0	100	\$9,550,000
Doddridge	130	69	119	5	7	56	\$26,956,000
Fayette	1,136	369	597	8	11	759	\$79,235,000
Gilmer	112	35	42	3	3	74	\$11,323,000
Grant	153	63	91	5	8	85	\$30,758,000
Greenbrier	799	299	460	6	7	494	\$53,372,000
Hampshire	536	232	349	8	8	296	\$59,423,000
Hancock	348	144	182	2	2	202	\$14,961,000
Hardy	261	133	203	4	7	124	\$36,713,000
Harrison	1,833	644	999	6	8	1,183	\$80,498,000
Jackson	728	274	432	5	7	449	\$57,944,000
Jefferson	1,092	371	596	6	7	715	\$66,389,000
Kanawha	7,403	2,220	3,308	46	53	5,137	\$386,284,000
Lewis	577	162	241	5	5	410	\$32,376,000
Lincoln	371	178	276	7	7	186	\$42,903,000
Logan	471	174	260	12	14	285	\$57,267,000
Marion	1,356	449	665	7	2	900	\$54,012,000
Marshall	866	229	361	2	3	635	\$35,644,000
Mason	659	185	285	3	10	471	\$47,994,000
McDowell	506	245	413	9	9	252	\$53,558,000
Mercer	2,236	832	1,335	13	15	1,391	\$142,736,000

Injury Classifications

Type A Injury - Bleeding Wound, Distorted Member, or Had to be Carried from the Scene

Type B Injury - Bruises, Abrasions, Swelling, Limping, etc.

Type C Injury - No Visible Injury, But Complaint of Pain or Momentary Unconsciousness.

* Based on Estimates by the Federal Highway Administration

Fatality - \$2,600,000

Type A Injury - \$180,000

Type B Injury - \$36,000

Type C Injury - \$19,000

Property Damage Only Accident - \$2,000

ECONOMIC LOSS BY COUNTY*

County	Total Accidents	Injury* Accidents	Persons Injured	Fatal Accidents	Fatal Injuries	Property Damage Only Accidents	Total Economic Loss
Mineral	541	205	302	5	6	331	\$42,721,000
Mingo	453	212	374	3	4	238	\$38,416,000
Monongalia	2,923	861	1,272	14	16	2,048	\$132,330,000
Monroe	271	103	145	2	3	166	\$23,854,000
Morgan	289	109	154	0	0	180	\$11,338,000
Nicholas	755	270	419	8	10	477	\$60,833,000
Ohio	2,103	470	683	5	5	1,628	\$57,118,000
Pendleton	211	94	131	6	6	111	\$25,160,000
Pleasants	181	53	68	0	0	128	\$4,718,000
Pocahontas	107	43	65	2	3	62	\$13,024,000
Preston	623	263	384	13	13	347	\$69,886,000
Putnam	1,358	377	541	8	10	973	\$64,975,000
Raleigh	2,560	960	1,543	17	20	1,583	\$163,701,000
Randolph	741	222	327	5	5	514	\$36,506,000
Ritchie	187	80	123	4	5	103	\$23,375,000
Roane	415	151	217	4	4	260	\$29,791,000
Summers	239	98	146	2	2	139	\$17,041,000
Taylor	387	136	200	1	1	250	\$19,410,000
Tucker	154	66	87	2	2	86	\$12,297,000
Tyler	244	55	80	2	2	187	\$13,010,000
Upshur	504	172	278	8	10	324	\$46,076,000
Wayne	991	376	587	13	14	602	\$80,652,000
Webster	202	78	115	2	2	122	\$14,300,000
Wetzel	335	107	163	2	3	226	\$16,156,000
Wirt	115	54	72	2	2	59	\$12,483,000
Wood	3,334	1,101	1,749	14	15	2,219	\$152,289,000
Wyoming	530	209	325	5	6	316	\$40,401,000
TOTAL	50,897	17,009	26,037	357	415	33,531	\$3,051,914,000

Injury Classifications

Type A Injury - Bleeding Wound, Distorted Member, or Had to be Carried from the Scene

Type B Injury - Bruises, Abrasions, Swelling, Limping, etc.

Type C Injury - No Visible Injury, But Complaint of Pain or Momentary Unconsciousness.

* Based on Estimates by the Federal Highway Administration

Fatality - \$2,600,000

Type A Injury - \$180,000

Type B Injury - \$36,000

Type C Injury - \$19,000

Property Damage Only Accident - \$2,000

RATES* BY COUNTY

County	Accident Rate	Injury Accident Rate	Injury Rate	Fatal Accident Rate	Fatality Rate	VMT** (1,000)
Barbour	223	82	134	6.47	7.28	123,582
Berkeley	256	85	128	1.73	1.97	811,228
Boone	233	90	147	2.14	2.49	280,780
Braxton	129	49	72	1.50	1.80	333,949
Brooke	320	94	150	1.41	1.41	212,540
Cabell	466	141	217	1.00	1.22	898,878
Calhoun	188	66	99	1.79	1.79	55,781
Clay	150	56	90	0.00	0.00	106,115
Doddridge	164	87	150	6.30	8.82	79,339
Fayette	197	64	103	1.39	1.90	577,491
Gilmer	193	60	72	5.16	5.16	58,128
Grant	132	54	78	4.31	6.90	116,008
Greenbrier	184	69	106	1.38	1.61	433,805
Hampshire	281	122	183	4.19	4.19	190,784
Hancock	208	86	109	1.20	1.20	166,956
Hardy	202	103	157	3.10	5.43	128,983
Harrison	260	91	145	0.85	1.13	706,135
Jackson	158	59	94	1.08	1.52	461,709
Jefferson	315	107	172	1.73	2.02	346,440
Kanawha	313	94	140	1.95	2.24	2,362,952
Lewis	191	54	80	1.66	1.66	301,967
Lincoln	255	122	190	4.81	4.81	145,483
Logan	138	51	76	3.51	4.09	342,037
Marion	617	204	188	3.18	4.09	219,845
Marshall	199	53	153	0.46	0.46	435,920
Mason	296	83	162	1.35	1.35	222,692
McDowell	204	99	115	3.62	4.03	248,291
Mercer	300	112	179	1.75	2.02	744,233

* Rates per Hundred Million Vehicle Miles Traveled
 ** Vehicle Miles Traveled, 2000 WV Planning Division

RATES* BY COUNTY

County	Accident Rate	Injury Accident Rate	Injury Rate	Fatal Accident Rate	Fatality Rate	VMT** (1,000)
Mineral	295	112	164	2.72	3.27	183,687
Mingo	169	79	140	1.12	1.49	267,829
Monongalia	390	115	170	1.87	2.14	749,009
Monroe	327	124	175	2.41	3.62	82,839
Morgan	216	82	115	0.00	0.00	133,587
Nicholas	229	82	127	2.42	3.03	330,290
Ohio	468	105	152	1.11	1.11	449,662
Pendleton	242	108	150	6.89	6.89	87,084
Pleasants	252	74	95	0.00	0.00	71,778
Pocahontas	118	48	72	2.21	3.32	90,383
Preston	225	95	139	4.70	4.70	276,304
Putnam	255	71	102	1.50	1.88	531,959
Raleigh	270	101	163	1.79	2.11	948,892
Randolph	285	85	126	1.92	1.92	259,779
Ritchie	159	68	104	3.39	4.24	117,897
Roane	248	90	129	2.39	2.39	167,576
Summers	165	68	101	1.38	1.38	144,741
Taylor	403	142	208	1.04	1.04	95,938
Tucker	229	98	130	2.98	2.98	67,104
Tyler	376	85	123	3.08	3.08	64,930
Upshur	313	107	172	4.96	6.20	161,189
Wayne	291	111	173	3.82	4.12	340,043
Webster	309	119	176	3.05	3.05	65,469
Wetzel	277	88	135	1.65	2.48	121,052
Wirt	286	134	179	4.97	4.97	40,256
Wood	400	132	210	1.68	1.80	833,295
Wyoming	239	94	146	2.25	2.70	222,099
AVERAGE	282	94	145	1.98	2.30	18,016,722

* Rates per Hundred Million Vehicle Miles Traveled

** Vehicle Miles Traveled, 2000 WV Planning Division

MUNICIPAL ACCIDENT INFORMATION

CLASS I CITIES

POPULATION* OVER 50,000

Municipality	Population	Accidents	Fatalities	Injuries	% Seat Belts Used	Pedestrian Accidents
Charleston	53,421	2,753	21	1,122	78	67
Huntington	51,475	2,701	4	1,079	82	57
TOTAL		5,454	25	2,201		124

CLASS II CITIES

POPULATION* 10,001 - 50,000

Municipality	Population	Accidents	Fatalities	Injuries	% Seat Belts Used	Pedestrian Accidents
Beckley	17,254	827	1	429	80	13
Bluefield	11,451	419	1	151	64	1
Clarksburg	16,473	579	1	236	86	8
Fairmont	19,097	603	0	228	75	4
Martinsburg	14,972	582	0	153	75	15
Morgantown	26,809	1,240	1	362	86	23
Parkersburg	33,099	1,821	1	892	83	36
South Charleston	13,390	754	0	266	69	7
Saint Albans	11,567	324	0	106	73	7
Vienna	10,861	259	1	105	88	5
Weirton	20,411	328	0	211	81	7
Wheeling	31,419	1,613	2	499	82	23
TOTAL		9,349	8	3,638		149

* Population -- 2000 Bureau of Census

MUNICIPAL ACCIDENT INFORMATION
CLASS III CITIES
POPULATION* 2,001 - 10,000

Municipality	Population	Accidents	Fatalities	Injuries	% Seat Belts Used	Pedestrian Accidents
Barboursville	3,183	101	0	36	84	1
Bethlehem	2,651	49	0	13	87	0
Bridgeport	7,306	169	0	68	86	2
Buckhannon	5,725	106	0	31	87	3
Charles Town	2,907	89	0	22	58	0
Chester	2,592	60	0	6	45	0
Dunbar	8,154	265	1	89	78	5
Elkins	7,032	278	0	115	78	6
Fayetteville	2,754	60	0	14	77	0
Follansbee	3,115	113	1	40	68	3
Grafton	5,489	130	0	34	77	0
Hinton	2,880	35	0	9	73	0
Hurricane	5,222	103	0	23	88	0
Kenova	3,485	137	0	29	59	0
Keyser	5,303	152	0	44	66	3
Kingwood	2,944	26	0	9	31	0
Lewisburg	3,624	158	0	71	87	2
Madison	2,667	80	1	24	74	1
Mannington	2,124	24	0	6	66	0
Milton	2,206	69	0	33	79	0
Moorefield	2,375	43	0	12	87	2
Moundsville	9,998	296	0	99	82	2
New Martinsville	5,984	124	0	72	61	1
Nitro	6,824	227	1	89	79	2
Oak Hill	7,589	212	0	98	75	1
Paden City	3,860	24	0	4	35	1
Petersburg	2,423	50	0	16	77	0
Philippi	2,870	53	0	19	76	0
Point Pleasant	4,637	82	0	50	79	2
Princeton	6,347	423	1	159	55	7
Ranson		69	0	25	52	0
Ravenswood	4,031	13	0	5	74	0
Richwood	2,477	35	0	8	82	1
Ripley	3,263	211	0	64	74	4
Salem	2,006	10	0	4	76	0
Shinnston	2,295	65	0	23	62	1
Spencer	2,352	95	0	27	70	2
St. Marys	2,017	47	0	14	73	2
Summersville	3,294	98	0	45	82	0
Welch	2,683	132	0	64	72	6
Wellsburg	2,891	122	0	37	75	0
Weston	4,317	100	1	30	77	2
Westover	3,941	93	0	44	83	2
White Sulphur Springs	2,315	29	0	19	71	0
Williamson	3,414	87	0	47	56	1
Williamstown	2,996	51	0	27	87	0
TOTAL		4,995	6	1,817		65

* Population -- 2000 Bureau of Census

MUNICIPAL ACCIDENT INFORMATION

POPULATION* LESS THAN 2,000

Municipality	Population	Accidents	Fatalities	Injuries	% Seat Belts Used	Pedestrian Accidents
Addison / Webster Springs	808	7	0	2	64	0
Albright	247	2	0	1	100	0
Alderson	1,091	3	0	0	100	0
Anawalt	272	No Accidents Reported				
Anmoore	685	11	0	4	64	0
Ansted	1,576	14	1	4	71	0
Athens	1,102	14	0	5	78	1
Auburn	103	No Accidents Reported				
Bancroft	367	6	0	2	65	0
Barrackville	1,288	4	0	3	78	0
Bath / Berkeley Springs	663	25	0	9	75	0
Bayard	299	1	0	1	100	0
Beech Bottom	606	9	0	9	47	0
Belington	1,788	33	1	15	70	0
Belle	1,259	3	0	4	85	0
Belmont	1,036	14	0	5	75	0
Benwood	1,585	30	0	7	69	1
Bethany	985	11	0	2	68	0
Beverly	651	33	1	12	77	0
Blacksville	175	5	0	2	57	0
Bramwell	426	4	0	4	69	0
Brandonville	102	3	0	0	56	0
Bruceton Mills	74	6	0	2	85	0
Buffalo	1,171	10	1	5	69	0
Burnsville	481	9	0	4	91	0
Cairo	263	3	0	2	67	0
Camden-On-Gauley	157	6	0	9	75	0
Cameron	1,212	11	0	3	74	1
Capon Bridge	200	8	0	7	53	0
Carpendale	954	1	0	1	67	0
Cedar Grove	862	1	0	0	100	0
Ceredo	1,675	56	0	6	66	1
Chapmanville	1,211	48	0	9	67	1
Chesapeake	1,643	26	2	13	62	0
Clay	593	19	0	8	79	0
Clearview	590	4	0	3	100	0
Clendenin	1,116	8	0	2	67	1
Coalton/Womelsdorff	247	1	0	0	100	0
Cowen	513	10	0	2	69	0
Danville	550	21	8	0	40	0
Davis	624	8	1	2	83	0
Davy	373	5	0	5	69	0
Delbarton	474	19	0	14	72	0
Durbin	262	3	0	2	50	0
East Bank	933	4	0	5	85	0

* Population -- 2000 Bureau of Census

MUNICIPAL ACCIDENT INFORMATION

POPULATION* LESS THAN 2,000

Municipality	Population	Accidents	Fatalities	Injuries	% Seat Belts Used	Pedestrian Accidents
Eleanor	1,345	16	0	10	65	0
Elizabeth	994	11	0	1	75	0
Elk Garden	217	1	0	0	100	0
Ellenboro	373	14	0	10	60	0
Fairview	435	4	0	0	57	0
Farmington	387	8	0	4	4	0
Flatwoods	348	11	0	5	76	0
Flemington	287	3	0	4	29	0
Fort Gay	819	No Accidents Reported				
Franklin	797	20	1	11	71	1
Friendly	159	1	0	0	100	0
Gary	917	5	0	1	15	0
Gassaway	901	14	0	6	74	0
Gauley Bridge	738	13	0	5	73	0
Gilbert	417	2	0	4	50	0
Glasgow	783	No Accidents Reported				
Glen Dale	1,582	73	0	32	40	0
Glenville	1,544	45	0	10	70	2
Grant Town	657	1	0	1	100	0
Grantsville	565	11	0	5	63	0
Granville	778	5	0	1	75	0
Hambleton	246	No Accidents Reported				
Hamlin	1,119	17	0	5	67	0
Handley	362	No Accidents Reported				
Harman	126	2	0	0	67	0
Harpers Ferry / Bolivar	307	1	0	2	100	0
Harrisville	1,842	15	0	4	82	0
Hartford	519	5	0	1	100	0
Hedgesville	240	14	0	6	89	0
Henderson	325	29	0	24	66	0
Hendricks	319	1	0	0	100	0
Hillsboro	243	2	0	2	75	0
Hundred	344	No Accidents Reported				
Huttonsville	217	4	0	2	87	0
Iaeger	358	6	0	2	89	0
Jane Lew	406	6	0	2	88	0
Jefferson	567	2	0	0	100	0
Junior	450	2	0	1	100	0
Kermit	209	5	0	3	89	0
Keystone	453	6	1	1	67	2
Kimball	411	8	0	8	68	0
Leon	132	4	0	5	50	0
Lester	322	13	0	8	95	0
Littleton	207	1	0	0	50	0
Logan	1,630	75	0	18	86	1

* Population -- 2000 Bureau of Census

MUNICIPAL ACCIDENT INFORMATION

POPULATION* LESS THAN 2,000

Municipality	Population	Accidents	Fatalities	Injuries	% Seat Belts Used	Pedestrian Accidents
Lost Creek	467	3	0	0	83	0
Lumberport	937	13	0	2	81	0
Mabscott	1,403	11	0	2	74	0
Man	770	1	0	0	0	0
Marlington	1,204	10	0	1	81	0
Marmet	1,693	44	0	36	68	0
Mason	1,064	12	1	16	50	0
Masontown	647	11	0	4	81	0
Matewan	498	No Accidents Reported				
Matoaka	317	6	0	6	76	0
McMechen	1,937	46	0	7	64	0
Meadow Bridge	321	8	0	6	55	0
Middlebourne	870	16	0	1	85	0
Mill Creek	662	13	0	2	82	1
Mitchell Heights	301	No Accidents Reported				
Monongah	939	6	0	1	55	0
Montgomery	1,942	39	0	2	59	0
Montrose	156	1	0	0	100	0
Mount Hope	1,487	6	0	2	78	0
Mullens	1,769	28	0	6	44	0
New Cumberland	1,099	2	0	0	100	0
New Haven	1,559	20	0	2	68	0
Newburg	360	4	0	0	100	0
North Hills	880	1	0	2	80	0
Northfork	519	4	0	4	100	0
Nutter Fort	1,686	47	0	20	52	1
Oakvale	142	1	0	0	0	0
Oceana	1,550	53	0	17	79	2
Osage		8	0	3	58	1
Parsons	1,463	10	0	1	81	0
Paw Paw	524	2	0	3	0	0
Pax	174	4	0	3	100	0
Pennsboro	1,199	16	0	12	40	0
Peterstown	499	22	0	8	67	0
Piedmont	1,014	3	0	0	50	0
Pine Grove	571	7	0	4	23	0
Pineville	715	56	0	10	84	0
Poca	1,013	14	0	3	93	0
Pratt	551	No Accidents Reported				
Pullman	169	No Accidents Reported				
Quinwood	435	1	0	0	100	0
Rainelle	1,545	30	0	9	78	0
Reedsville	517	9	0	5	86	0
Reedy	198	2	0	5	50	0
Renick / Falling Springs	209	2	0	1	67	0

* Population -- 2000 Bureau of Census

MUNICIPAL ACCIDENT INFORMATION

POPULATION* LESS THAN 2,000

Municipality	Population	Accidents	Fatalities	Injuries	% Seat Belts Used	Pedestrian Accidents
Rhodell	234	3	0	0	83	0
Ridgeley	762	4	0	0	60	1
Rivesville	913	6	0	1	85	0
Romney	1,940	35	0	7	29	0
Ronceverte	1,557	3	0	3	88	0
Rowlesburg	613	2	0	0	100	0
Rupert	940	12	0	5	81	1
Sand Fork / Layapolis	176	1	1	0	0	1
Sheperdstown	803	41	0	5	80	0
Sistersville	1,588	30	0	5	73	0
Smithers	904	No Accidents Reported				
Smithfield	177	1	0	1	100	0
Sophia	1,301	16	0	5	84	0
Star City	1,366	55	0	29	92	1
Stonewood	1,815	17	0	4	83	0
Sutton	1,011	17	0	5	86	0
Sylvester	195	1	0	0	100	0
Terra Alta	1,456	16	0	8	65	0
Thomas	452	2	0	2	100	0
Thurmond	7	No Accidents Reported				
Tridelphia	817	26	0	5	80	1
Tunnelton	336	2	0	0	33	0
Union	548	10	0	1	53	0
Valley Grove	405	6	0	7	86	0
War	788	5	0	0	80	0
Wardensville	246	3	0	0	50	0
Wayne	1,105	28	0	18	70	1
West Hamlin	696	12	1	3	77	0
West Liberty	1,220	12	0	5	93	0
West Logan	418	8	0	6	67	0
West Milford	651	No Accidents Reported				
West Union	806	7	0	1	73	0
White Hall	595	58	0	40	88	0
Whitesville	520	5	0	6	58	0
Winfield	1,858	29	0	9	88	0
Worthington	170	No Accidents Reported				
TOTAL		2,060	20	786		23

* Population -- 2000 Bureau of Census

Glossary

Glossary

Accident	Any motor vehicle crash which involved one or more vehicles and results in death, injury, or property damage of at least \$500. The information in this report is based on those crashes, which are reported to the Division of Motor Vehicles and forwarded to the Division of Highways.
Accident Rate	The number of accidents per 100 million vehicle miles traveled.
Alcohol Related	An accident where <u>any</u> of the following three (3) conditions are met on the Uniform Traffic Accident Report: <ol style="list-style-type: none">1. The Driver Condition field is marked as drinking.2. The Contributing Circumstances field is marked as either Driver Under Influence or Pedestrian Under Influence.3. The Driver's Blood Alcohol Content is reported as greater than zero.
Bicycle Accidents	Any accident, in which at least one involved person is described as being a bicyclist.
Class I City	Any municipal corporation with population in excess of 50,000, as allowed under the provisions of Chapter 56, Acts of the Legislature, regular session, 1937.
Class II City	Any municipal corporation with population more than 10,000 and not more than 50,000, as allowed under the provisions of Chapter 56, Acts of the Legislature, regular session, 1937.
Class III City	Any municipal corporation with population more than 2,000 and not more than 10,000, as allowed under the provisions of Chapter 56, Acts of the Legislature, regular session, 1937.
Contributing Circumstances	In the investigating officer's opinion, the actions of the driver that contributed to the crash.
Driver Action	The driver's action at the time of the crash.
Driver Condition	The apparent condition of the driver at the time of the crash.
Fatal Accident	Any accident resulting in the death of one or more persons.
Fatal Accident Rate	The number of fatal accidents per 100 million vehicle miles.
Fatality	The death of a person as a result of an accident.
Fatality Rate	The number of fatalities per 100 million vehicle miles.
Injury Accident	An accident where no lives are claimed, but one or more persons are physically harmed.
Injury Accident Rate	The number of injury accidents per 100 million vehicle miles.
Injury Rate	The number of injuries per 100 million vehicle miles

Glossary

Injury Severity	In the reporting officer's best judgement, the most severe injury to a person involved in the crash. Classifications include No Injury, Type A Injury, Type B Injury, Type C Injury, and Fatal Injury. Each injury classification is defined below.
Large Truck	Any truck with three axles or more
Large Truck Accidents	Any accident, which involved a vehicle bearing Class C, E, H, K, L, or M license plates.
Manner of Collision	Describes how the involved vehicles initially collided.
Most Harmful Event	Accident event determined by the reporting officer, to have contributed most to the overall severity of the crash.
Motorcycle	Any two-wheeled motorized vehicle; may also include all-terrain vehicles (ATVs)
Motorcycle Accidents	Any accident, in which at least one involved person is described as being a motorcyclist.
Occupant Protection	Restraint equipment used by each vehicle occupant at the time of the crash. This includes the helmet used by any motorcyclist or bicyclist involved in the accident. Air bag usage is not included in this section.
Passenger Vehicle	Includes all cars, pick-up trucks, sport utility vehicles, passenger and commercial vans.
Pedestrian Accidents	Any accident, in which at least one involved person is described as being a pedestrian
Property Damage Only Accidents	An accident resulting in no death or injury; however there is property damage of \$500 or more
School Zone	All school property including school grounds and any street or highway abutting such school grounds and extending one hundred twenty-five feet along such school grounds, as described in 17C-6-1(b)(1) of the West Virginia state code.
Trend	A sustained general change or set of changes in data (increase or decrease) over a period of time.
Truck	Any truck with only two axles. <u>Does not</u> include pick-up trucks.
Type A Injury	An injury received in an accident that could be best described as a bleeding wound, distorted member, or had to be carried from the scene.
Type B Injury	An injury received in an accident that could be best described as bruises, abrasions, swelling, limping, etc.

Glossary

Type C Injury	An injury received in an accident that could be best described as no visible injury, but complaint of pain or momentary unconsciousness.
Uniform Traffic Crash Report	Standard form used by all law enforcement agencies in the state to report traffic accidents.
Vehicle Miles	West Virginia vehicle miles traveled, figures are estimated total number of miles traveled on West Virginia Interstate, Primary and Secondary highways, urban and rural local roads, and municipal / town streets by all vehicles during a given period.
Workzone	Includes areas of highway construction.