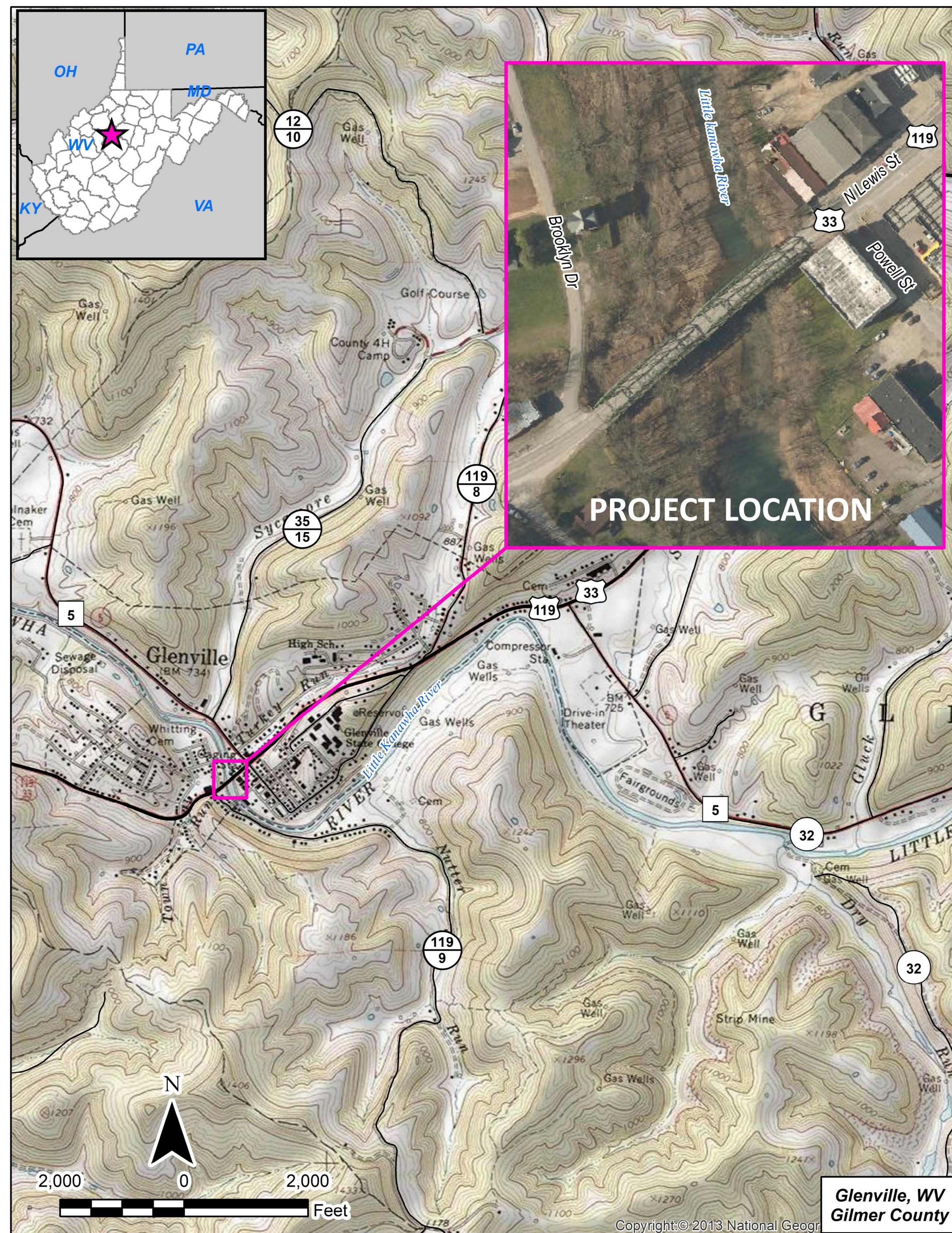


PROJECT OVERVIEW

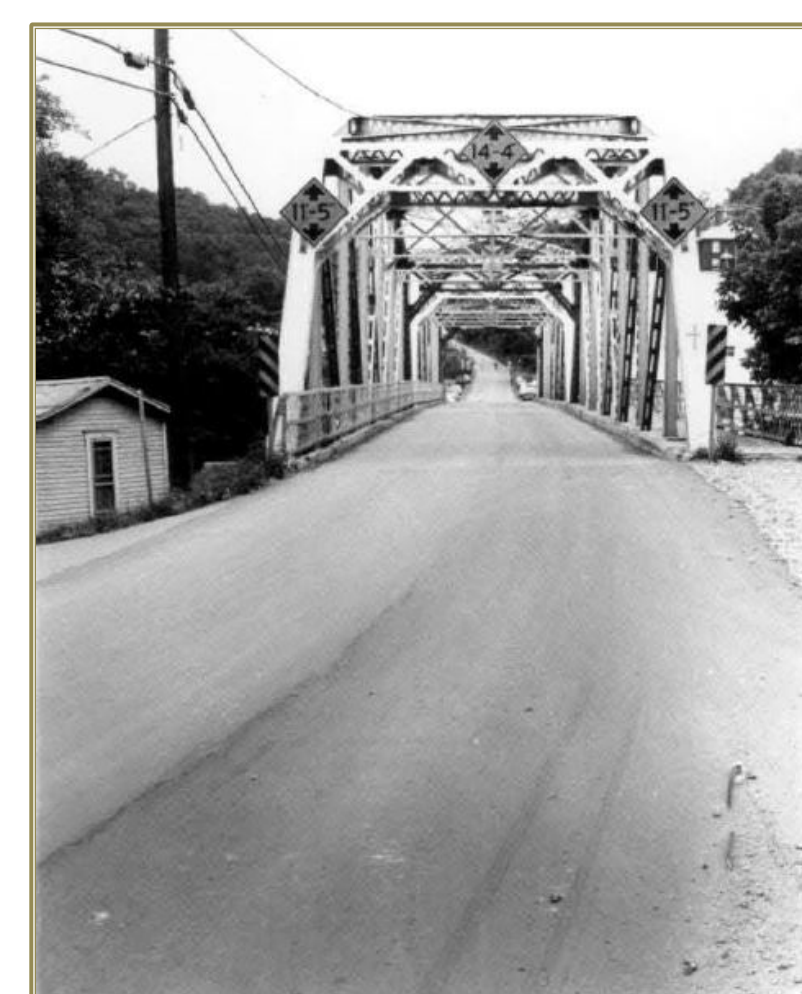
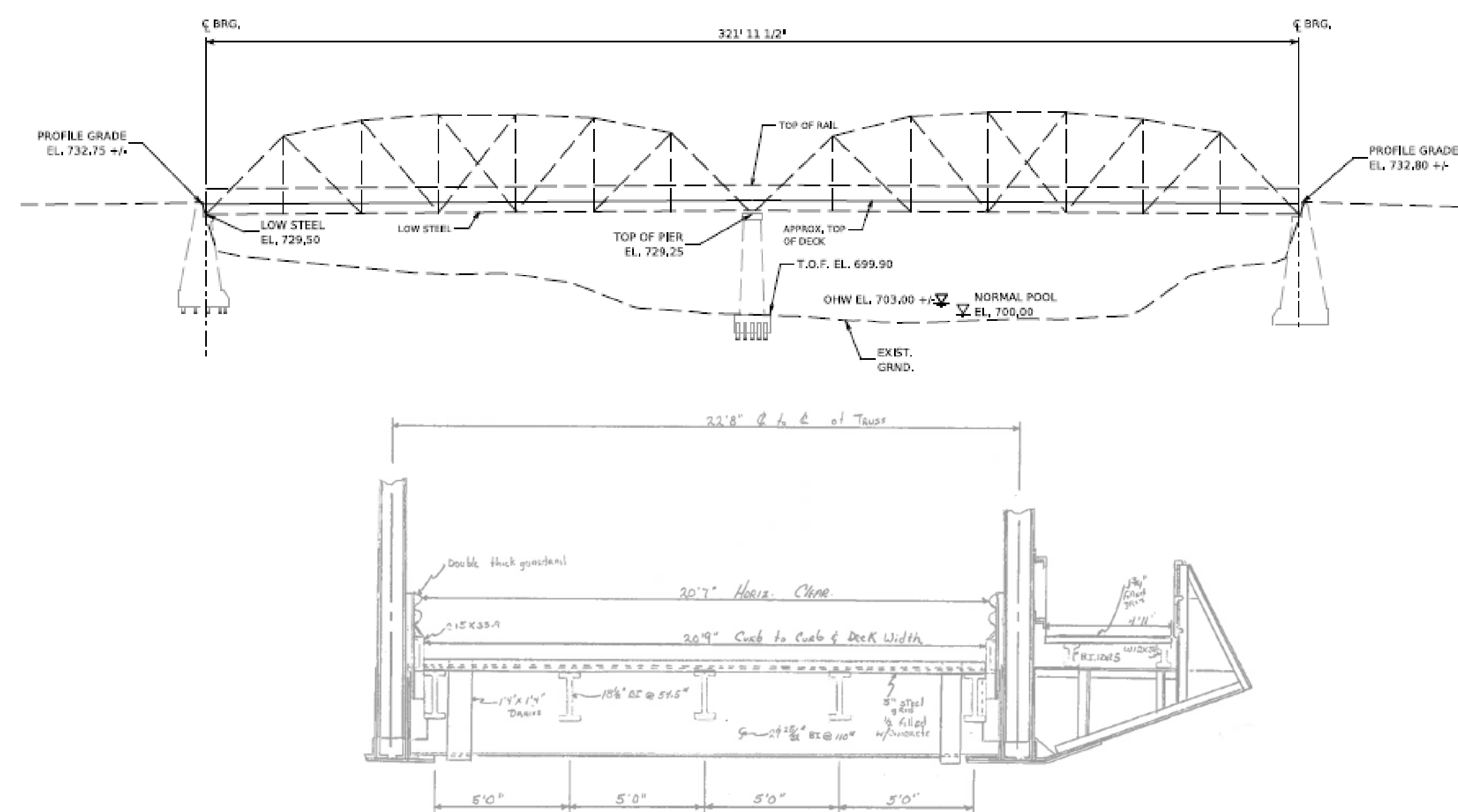
The purpose of the project is to replace the existing Glenville Truss Bridge with a bridge that meets current design standards.



Major destinations for travelers in the project area include the Gilmer County High School and Glenville State University, shown below, both within a half mile of the bridge.



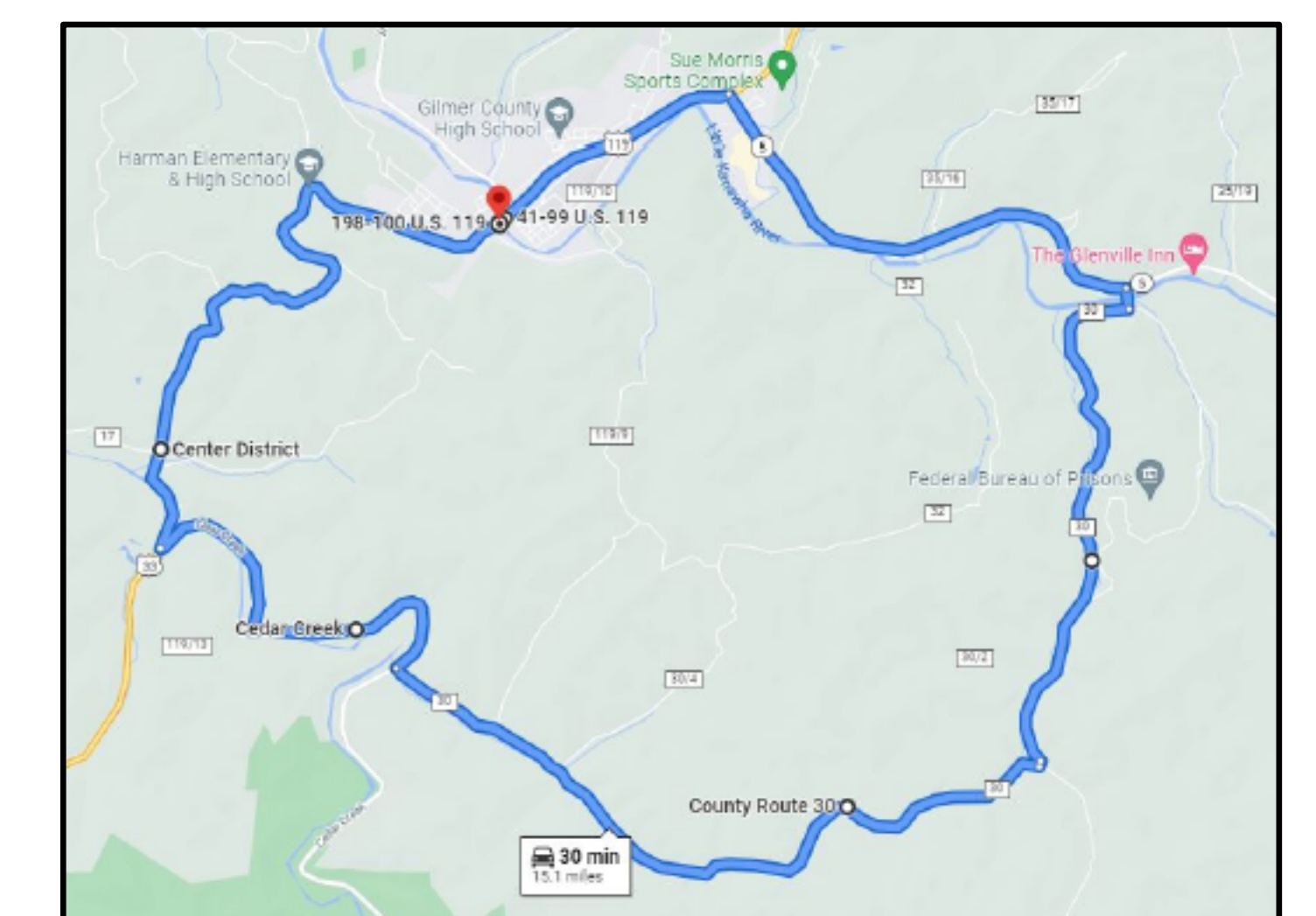
- The bridge was built in 1929 and carries US 33/ US 119 over the Little Kanawha River in Glenville
- The existing bridge exhibits deterioration, with rust, spalling, and collision damage
- The bridge structure is in poor condition, prompting WVDOH to post weight limits and conduct more frequent inspections
- Vertical clearance is limited to 14 feet 11 inches
- Travel lanes are narrow (10 feet), and the roadway has no shoulders
- One sidewalk is mounted on the upstream side of the structure
- The **existing bridge profile and section** are shown below (from 1992 inventory report):



The existing bridge was determined to be eligible for listing in the National Register of Historic Places. Coordination with the State Historic Preservation Office has been an important part of project planning (photo from 1984 Historic Properties Inventory Form).



EXISTING BRIDGE, MARCH 2021



TRAFFIC CONDITIONS AND DETOUR

Trucks and buses must cross the Glenville Truss Bridge one at a time. The 2021 Average Daily Traffic (ADT) was 3,130 Vehicles Per Day, and that number is expected to grow.

The Glenville Truss Bridge is the only crossing of the Little Kanawha River in the region. If the bridge were to close, a 15-mile detour would take approximately 30 minutes to drive, as shown on the Google Map above. The conditions of the detour route are not suitable for commercial traffic.

