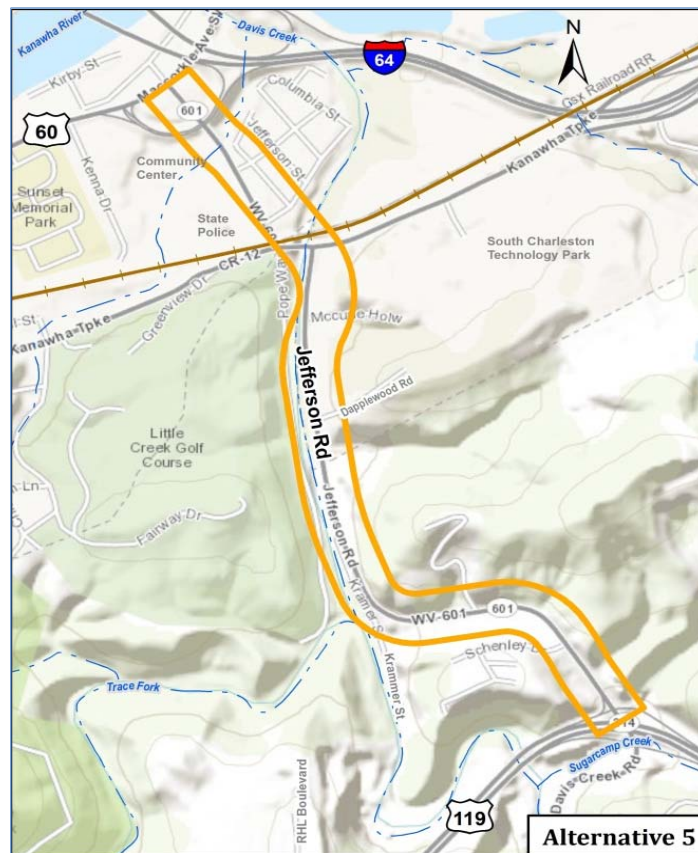


WELCOME

Informational Public Workshop
for the

WV 601, Jefferson Road,
US 119 to US 60 Project

State Project: U320-601-0.00
Federal Project: STP-0601(009)D



February 8, 2017
South Charleston Community Center
South Charleston, WV
4:00-7:00 PM

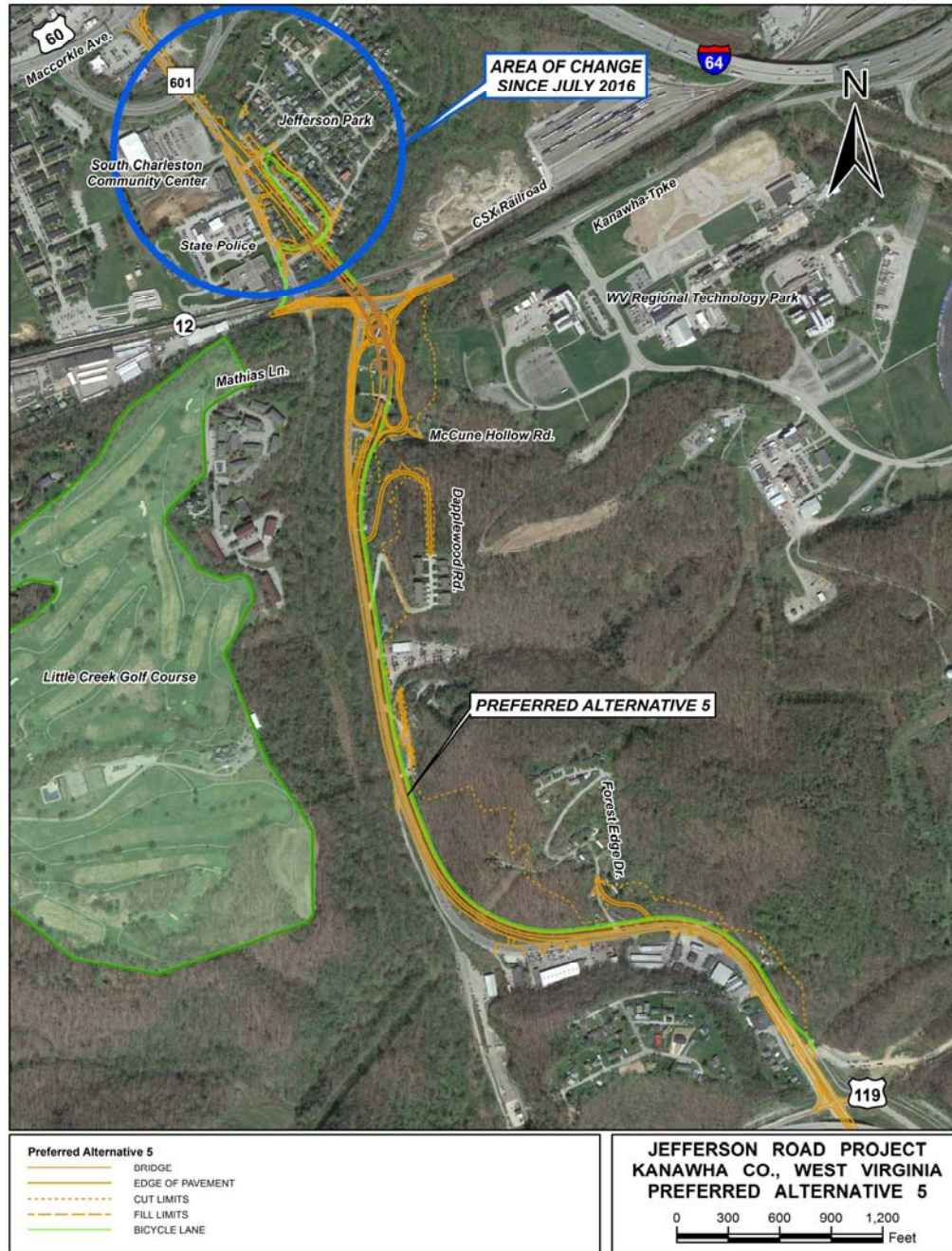


www.transportation.wv.gov

PROJECT SUMMARY

The West Virginia Department of Transportation, Division of Highways (WVDOH), in cooperation with the Federal Highway Administration (FHWA), is proposing to improve an approximately 1.7-mile section of Jefferson Road (WV 601) between its intersection with US 119 (Corridor G) in the south and its intersection with US 60 (McCorkle Avenue) in the north. The project will relieve current and future traffic congestion and improve safety throughout the corridor. The project includes widening Jefferson Road from 2-3 lanes to 4-5 lanes and providing a bridge over Davis Creek, Kanawha Turnpike, and the CSX railroad.

Seven preliminary alternatives were examined, and Preferred Alternative 5 was presented at a public workshop in July of 2016. After consideration for comments and further examination of traffic concerns, WVDOH adjusted the design in the area circled below. The elevated roadway will no longer have a retaining wall along Park Street, and the intersection layout will improve access to Jefferson Road by eliminating left turn movements.



CHANGES TO PREFERRED ALTERNATIVE

In the northern end of the project, the following adjustments have been made to Preferred Alternative 5:

- Eliminating the wall along Park Street
- Expanding the right-of-way surrounding the ramp, which involves shifting Park Street to the east
- Relocating 21 additional residences; many of the affected residents requested this change
- Elimination of traffic light at the bottom of the ramp (northern end of bridge)
- Additional bicycle/pedestrian pathway, along Park Street and the former Jefferson Road
- Movement onto and off of new 5-lane Jefferson Road will be “right-turn-only” in this area



	2016 Preferred Alternative 5	2017 Preferred Alternative 5 (No Wall)
Length (miles)	1.7	1.7
Includes Bridge Over Kanawha Trpk & RR	Yes	Yes
Has Wall Supporting Ramp to Bridge	Yes	No
Total Area Required	71.4 acres	74.6 acres
Residential Relocations	35	56
Commercial Relocations	1	1
Estimated Cost (Construction, Utilities, & Right-of-Way)	\$56.45 million	\$58.03 million



ESTIMATED PROJECT TIMELINE

MILESTONE	APPROXIMATE DATE (subject to change)
Public Information Workshop	February 8, 2017
Public Comments Due*	March 10, 2017
Environmental Clearance	Summer 2017
Expected Letting of the Project (This is a Design Build Project)	Late 2017
Expected Right of Way Activities	Early 2018
Construction Duration Approximately 2 Years	

* Comment using the last page of tonight's handout, or online at WVDOH website (<http://go.wv.gov/dotcomment>).



