



U.S. Department
of Transportation
Federal Highway
Administration



Welcome!

Public Workshop

WV 2 Improvements – New Cumberland

Madison Street and Chester Street

Intersection and Widening

State Project: U215-2-6.20 00

Federal Project Number: NFA-2317(027)D

Hancock County, West Virginia

Tuesday, September 17, 2019 / 4:00 PM to 7:00 PM

John D. Rockefeller IV Career Center

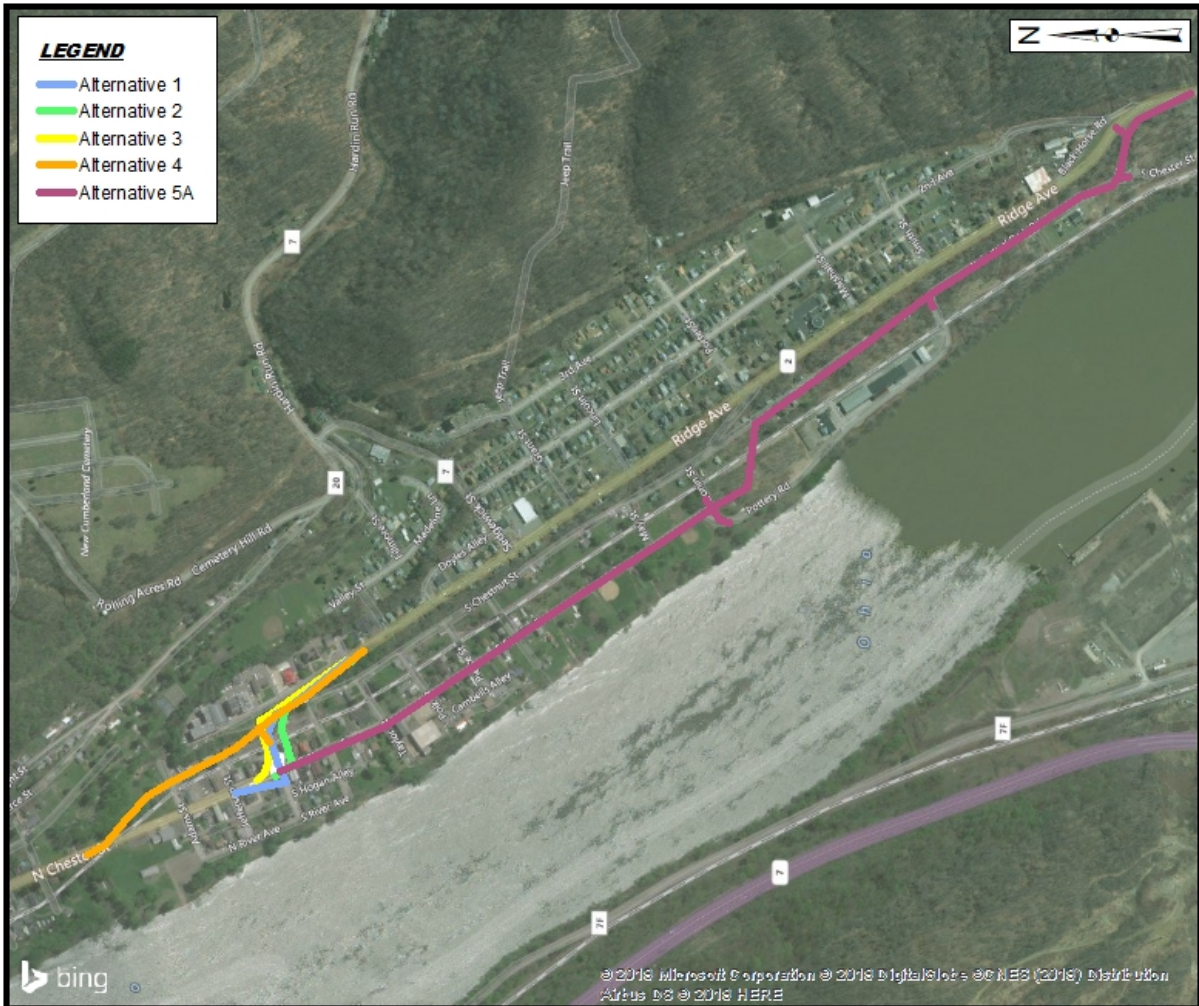
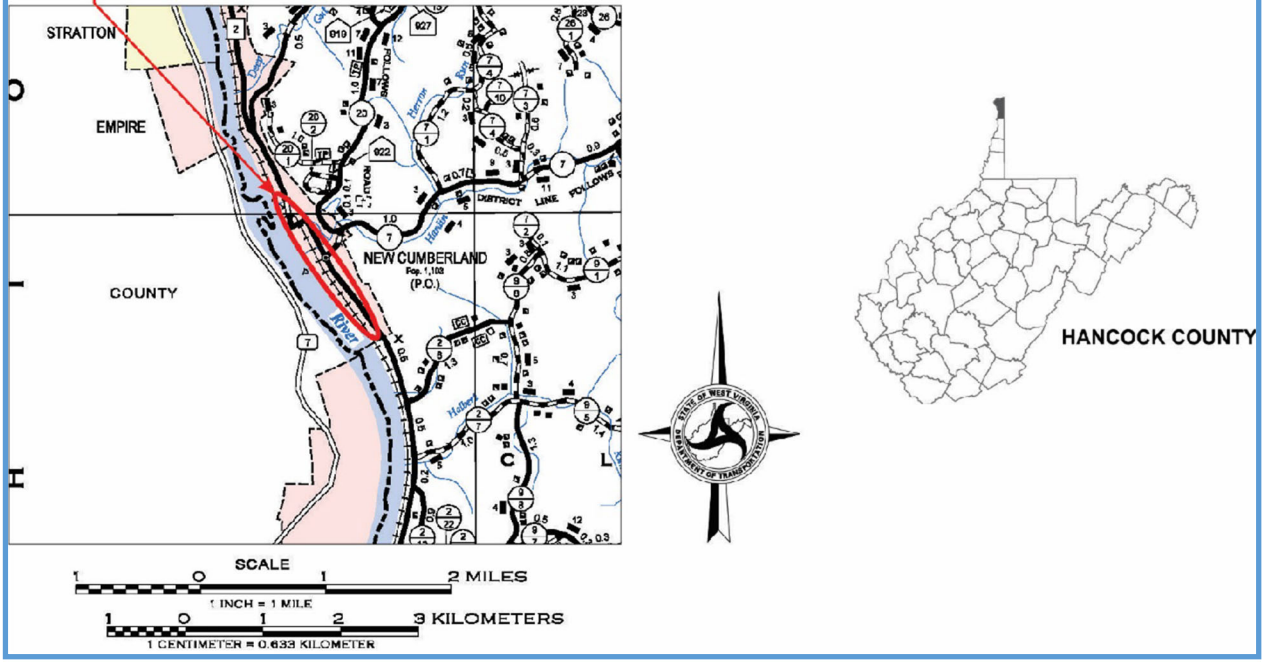
80 Rockefeller Circle, New Cumberland, West Virginia

The West Virginia Division of Highways (WVDOH) is conducting a Public Workshop to make available the approved Environmental Assessment (EA) for the WV 2 Improvements – New Cumberland Project (Madison Street and Chester Street Intersection and Widening). The purpose of this workshop will be to update the public on the project's status, answer questions, and listen to ideas or concerns. This workshop also complies with the public involvement requirements of the *National Environmental Policy Act* (NEPA) and Section 106 of the *National Historic Preservation Act*. Project maps, the approved EA, and other information are on display for your review here today and are also available online. Members of the study team are available to discuss these materials.

Purpose and Need

West Virginia Route 2 carries approximately 7,000 vehicles per day through the City of New Cumberland. Over 10 percent of these vehicles are trucks, many of them tractor trailers and other types of large, over-the-road vehicles. The efficient flow of this amount of car and truck traffic is hindered by two 90-degree turns and at-grade rail crossings on Madison and Chester Streets. The steep grade and tight width on Madison Street also compound traffic movement through New Cumberland, creating an undesirable condition for motorists and pedestrians.

PROJECT LOCATION



Alternatives

Besides a no-build alternative, WVDOH has developed five alternatives to correct the traffic problems on Route 2. All five alternatives meet the purpose and need of the project. The approved EA identifies and evaluates the potential environmental and cultural impacts of each alternative. The estimated costs provided include design, right-of-way acquisition, utility relocations, and construction.

- Alternative 1: Improves the 90-degree turns by widening the existing alignment, including intersection improvements at Madison and Chester Streets. Estimated cost is \$3.9 million.
- Alternative 2: Improves the 90-degree turns by shifting the road between them approximately 70 feet south. Widening also improves the Madison and Chester Streets intersection. Estimated cost is \$4.2 million.
- Alternative 3: Similar to Alternative 1, but instead of creating a skewed intersection and widening to the south, Alternative 3 improves the inside radius at the intersection of Madison and Chester Streets. Estimated cost is \$4.9 million.
- Alternative 4: Improves the existing 90-degree turns by creating a short bypass of the existing road. This new segment begins near Hardin Run, parallels the railroad tracks, and ends on Ridge Avenue near the library. Estimated cost is \$6.9 million.
- Alternative 5A: Creates a new routing for WV 2 through New Cumberland. The new roadway begins at the intersection of Chestnut and Madison Streets and runs closer to the Ohio River than current WV 2, generally following South Chestnut Street, Pottery Road, and Industrial Park Road to Ridge Avenue. Estimated cost is \$15.9 million.

**WV 2 IMPROVEMENTS – NEW CUMBERLAND
MADISON AND CHESTER STREET INTERSECTION
BUILD ALTERNATIVES SUMMARY OF IMPACTS**

RESOURCE OR ELEMENT	ALTERNATIVE 1	ALTERNATIVE 2	ALTERNATIVE 3	ALTERNATIVE 4	ALTERNATIVE 5A
NRHP-Listed or Eligible Resources (Direct Adverse Effect)	1	0	1	0	2
NRHP-Listed or Eligible Resources (Indirect Adverse Effect)	1	0	1	0	1
Archaeology Potential	Yes	Yes	Yes	Yes	Yes
Publicly-owned Parks	0	0	0	1	1
Impact to 4(f) Resources	1	0	1	1	3
Public Wastewater Facilities	0	0	0	1	1
Private Recreation Facilities	0	0	0	0	3
Streams	0	0	0	0	0
Wetlands	0	0	0	0	2
Operating Businesses	0	0	0	3	1
Vacant Businesses	2	1	4	0	3
Residences (total takes)	10	1	8	8	12
Environmental Justice Impacts	No	No	No	No	Yes
Potentially Hazardous Waste Sites	4	4	4	4	12
Noise Impacts	Yes	Yes	Yes	Yes	No
Cost	\$3.9 million	\$4.2 million	\$4.9 million	\$6.9 million	\$15.9 million

Tentative Project Schedule

Environmental Assessment Approved	August 14, 2019
Public Workshop	Tuesday, September 17, 2019
Comments Due	Thursday, October 17, 2019
Final Environmental Clearance	December 31, 2019

Note: The date for Final Environmental Clearance is subject to change.

***Comments following tonight's workshop are due
on October 17, 2019.***

You may comment through our website: <http://go.wv.gov/dotcomment>.

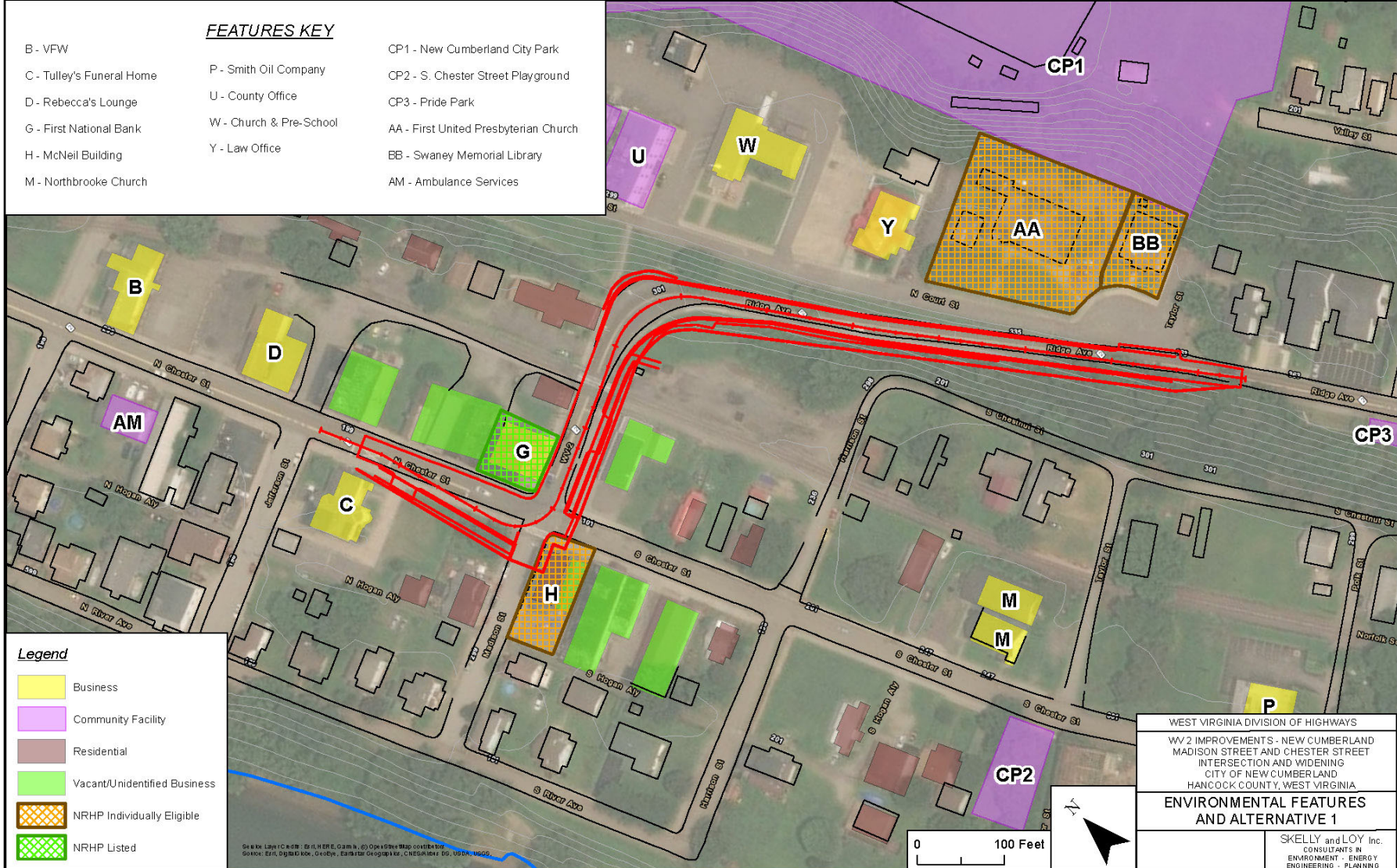
*Click the blue tab: Public Comments, Engineering Projects, then the WV 2 Improvements –
New Cumberland tab*

Or by Email: Sondra.L.Mullins@wv.gov

Or by regular mail by writing to:

Mr. RJ Scites, P.E.
Director, Engineering Division
West Virginia Department of Transportation
1334 Smith Street
Charleston, WV 25301

***Thank you for attending our workshop! Your interest
in the project is greatly appreciated.***



- B - VFW
- C - Tulley's Funeral Home
- D - Rebecca's Lounge
- G - First National Bank
- H - McNeil Building
- M - Northbrooke Church

FEATURES KEY

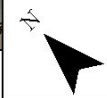
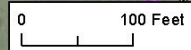
- P - Smith Oil Company
- U - County Office
- W - Church & Pre-School
- Y - Law Office
- CP1 - New Cumberland City Park
- CP2 - S. Chester Street Playground
- CP3 - Pride Park
- AA - First United Presbyterian Church
- BB - Swaney Memorial Library
- AM - Ambulance Services

- Legend**
- Business
 - Community Facility
 - Residential
 - Vacant/Unidentified Business
 - NRHP Individually Eligible
 - NRHP Listed

WEST VIRGINIA DIVISION OF HIGHWAYS
 WV2 IMPROVEMENTS - NEW CUMBERLAND
 MADISON STREET AND CHESTER STREET
 INTERSECTION AND WIDENING
 CITY OF NEW CUMBERLAND
 HANCOCK COUNTY, WEST VIRGINIA

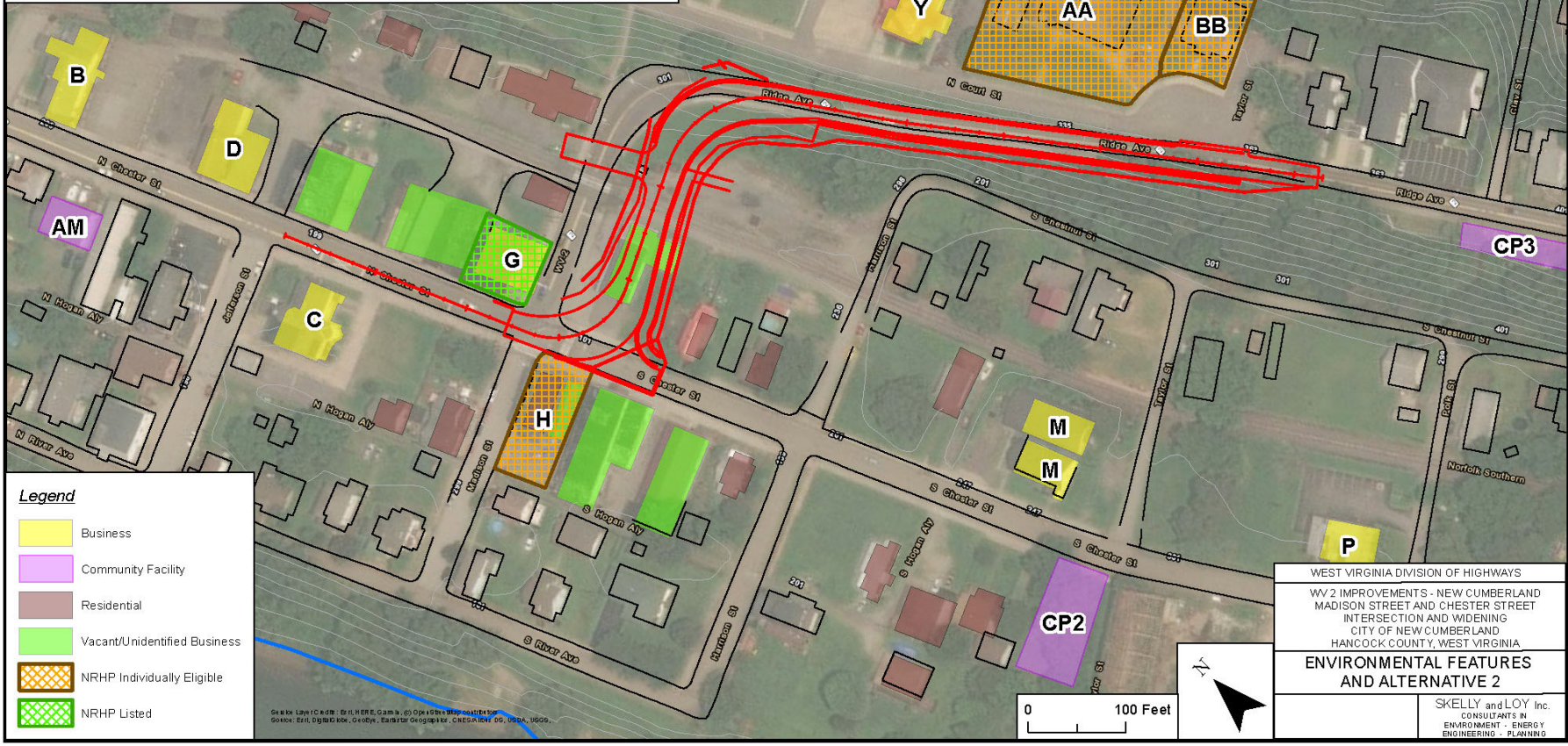
**ENVIRONMENTAL FEATURES
 AND ALTERNATIVE 1**

SKELLY and LOY Inc.
 CONSULTANTS IN
 ENVIRONMENT - ENERGY
 ENGINEERING - PLANNING



Source: Layers: © 2014 HERE, © 2014 DeLorme, © 2014 Swire Map, contributors
 Source: Esri, DigitalGlobe, GeoEye, Earthstar OpenStreetMap contributors, CNES/Airbus DS, USDA, AeroGRID, IGN, GEBCO, Swire

FEATURES KEY		
B - VFW	P - Smith Oil Company	CP1 - New Cumberland City Park
C - Tulley's Funeral Home	W - Church & Pre-School	CP2 - S. Chester Street Playground
D - Rebecca's Lounge	Y - Law Office	CP3 - Pride Park
G - First National Bank		AA - First United Presbyterian Church
H - McNeil Building		BB - Swaney Memorial Library
M - Northbrooke Church		AM - Ambulance Services

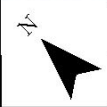
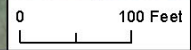


Legend	
	Business
	Community Facility
	Residential
	Vacant/Unidentified Business
	NRHP Individually Eligible
	NRHP Listed

WEST VIRGINIA DIVISION OF HIGHWAYS
 WY2 IMPROVEMENTS - NEW CUMBERLAND
 MADISON STREET AND CHESTER STREET
 INTERSECTION AND WIDENING
 CITY OF NEW CUMBERLAND
 HANCOCK COUNTY, WEST VIRGINIA

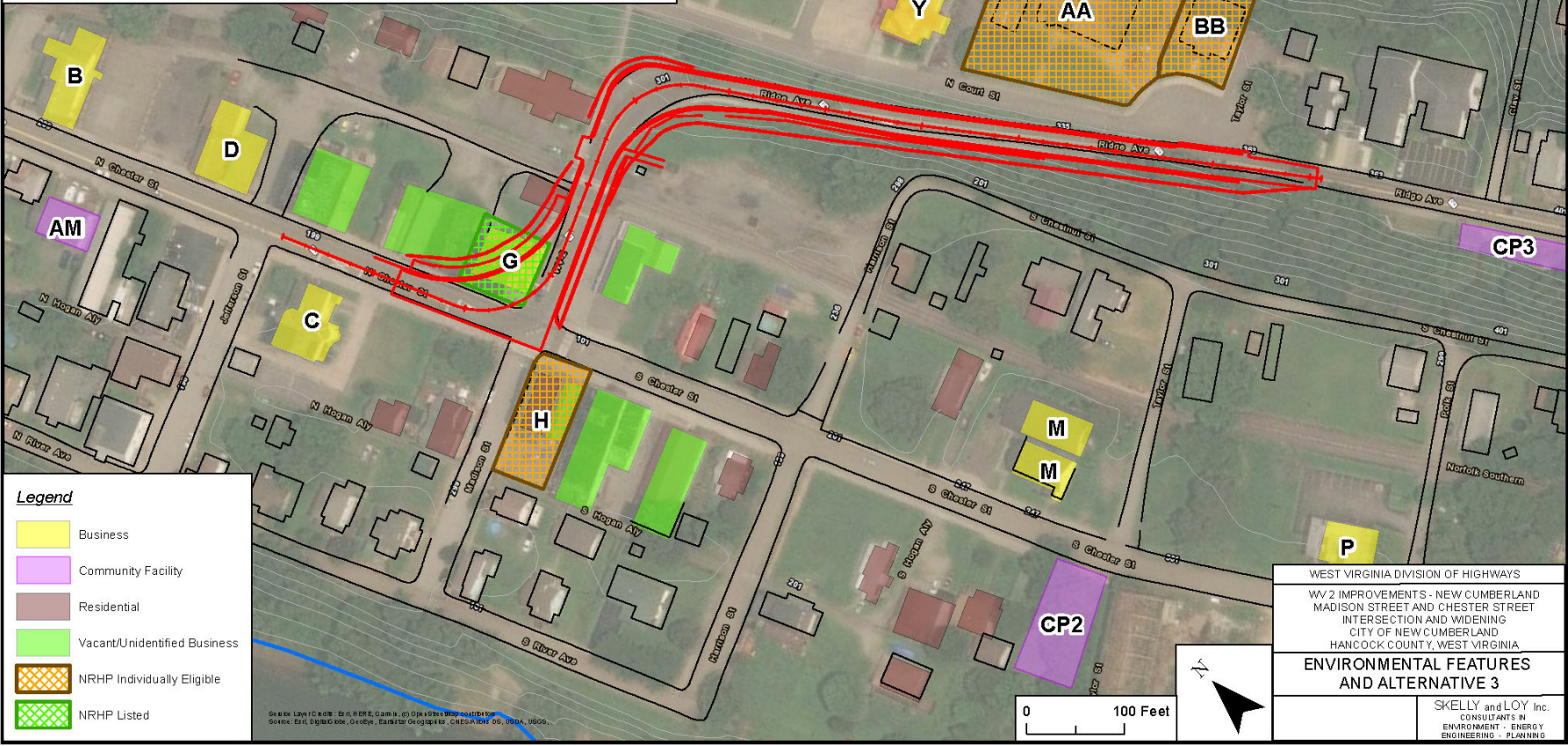
**ENVIRONMENTAL FEATURES
 AND ALTERNATIVE 2**

SKELLY and LOY Inc.
 CONSULTANTS IN
 ENVIRONMENT - ENERGY
 ENGINEERING - PLANNING



© 2014 LAYCO, INC. ALL RIGHTS RESERVED. © 2014 SKELLY and LOY, INC. SOURCE: ESRI, DIGITAL GLOBE, GOOGLE EARTH GEOLOGICAL, CENSUS 2000, USDA, USGS.

FEATURES KEY		
B - VFW	P - Smith Oil Company	CP1 - New Cumberland City Park
C - Tulley's Funeral Home	W - Church & Pre-School	CP2 - S. Chester Street Playground
D - Rebecca's Lounge	Y - Law Office	CP3 - Pride Park
G - First National Bank		AA - First United Presbyterian Church
H - McNeil Building		BB - Swaney Memorial Library
M - Northbrooke Church		AM - Ambulance Services



Legend	
	Business
	Community Facility
	Residential
	Vacant/Unidentified Business
	NRHP Individually Eligible
	NRHP Listed

WEST VIRGINIA DIVISION OF HIGHWAYS
 WV 2 IMPROVEMENTS - NEW CUMBERLAND
 MADISON STREET AND CHESTER STREET
 INTERSECTION AND WIDENING
 CITY OF NEW CUMBERLAND
 HANCOCK COUNTY, WEST VIRGINIA

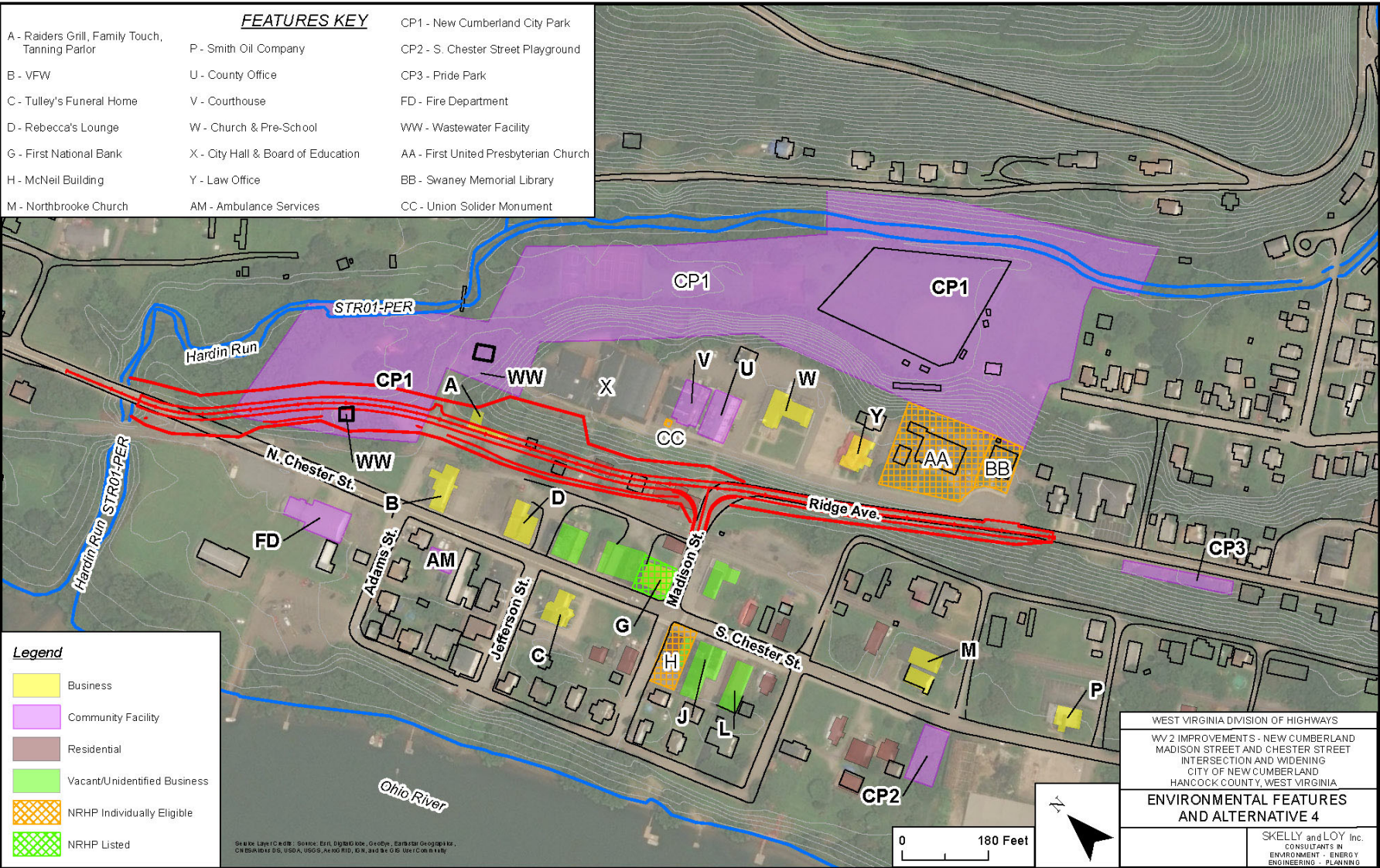
**ENVIRONMENTAL FEATURES
 AND ALTERNATIVE 3**

SKELLY and LOY Inc.
 CONSULTANTS IN
 ENVIRONMENT - ENERGY
 ENGINEERING - PLANNING

SKELLY and LOY Inc. is the author of this map. © 2014 Skelly and Loy Inc. All rights reserved. Source: Esri, DigitalGlobe, GeoEye, Earthstar Geographics, CNES/Airbus DS, USDA, USGS.

FEATURES KEY

- | | | |
|---|------------------------------------|---------------------------------------|
| A - Raiders Grill, Family Touch, Tanning Parlor | P - Smith Oil Company | CP1 - New Cumberland City Park |
| B - VFW | U - County Office | CP2 - S. Chester Street Playground |
| C - Tulley's Funeral Home | V - Courthouse | CP3 - Pride Park |
| D - Rebecca's Lounge | W - Church & Pre-School | FD - Fire Department |
| G - First National Bank | X - City Hall & Board of Education | WW - Wastewater Facility |
| H - McNeil Building | Y - Law Office | AA - First United Presbyterian Church |
| M - Northbrooke Church | AM - Ambulance Services | BB - Swaney Memorial Library |
| | | CC - Union Solider Monument |



Legend

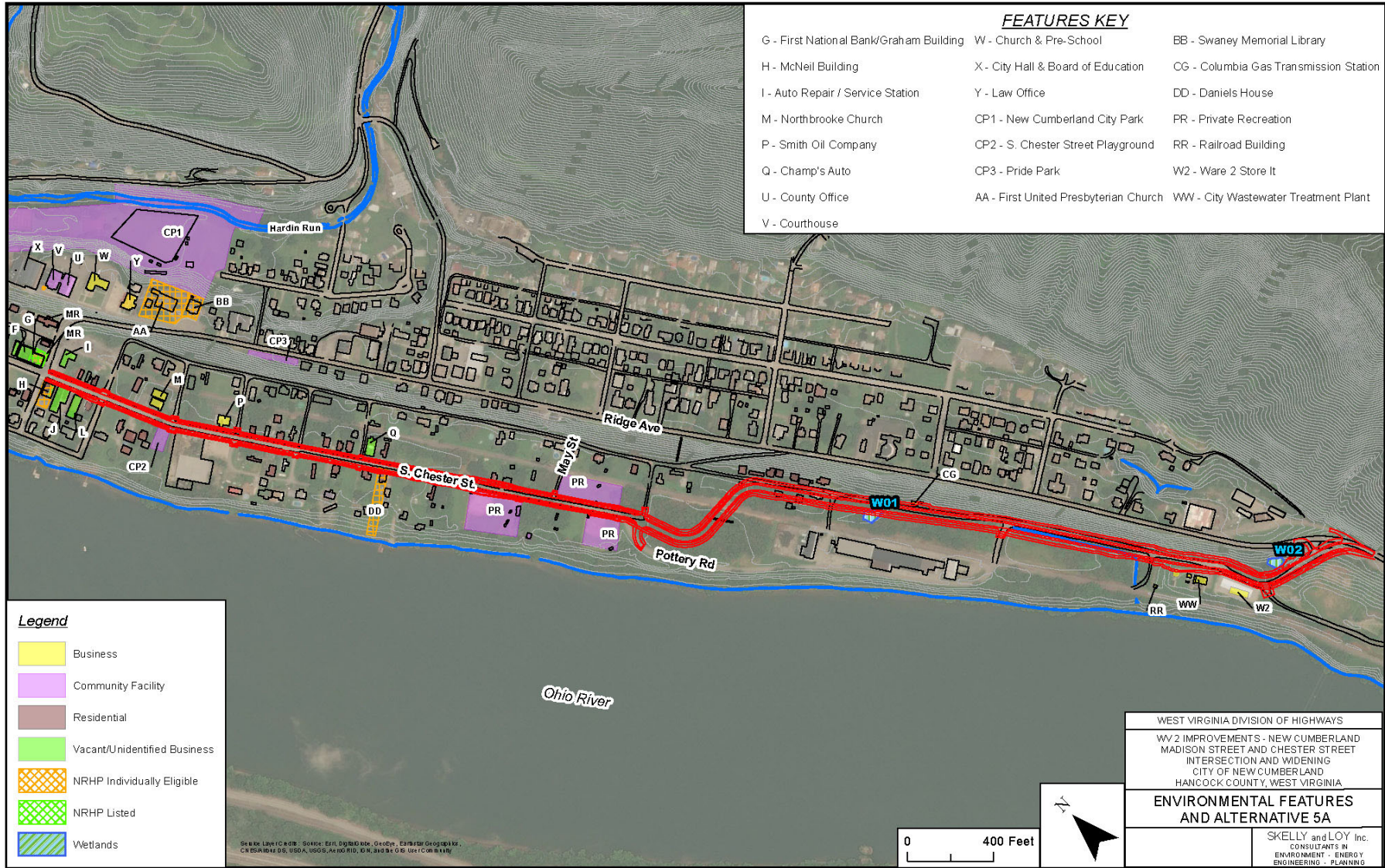
- Business
- Community Facility
- Residential
- Vacant/Unidentified Business
- NRHP Individually Eligible
- NRHP Listed

WEST VIRGINIA DIVISION OF HIGHWAYS
 WW 2 IMPROVEMENTS - NEW CUMBERLAND
 MADISON STREET AND CHESTER STREET
 INTERSECTION AND WIDENING
 CITY OF NEW CUMBERLAND
 HANCOCK COUNTY, WEST VIRGINIA

**ENVIRONMENTAL FEATURES
 AND ALTERNATIVE 4**

SKELLY and LOY Inc.
 CONSULTANTS IN
 ENVIRONMENT - ENERGY
 ENGINEERING - PLANNING

SKELLY and LOY Inc. Source: Esri, DigitalGlobe, GeoEye, Earthstar (Google), CNES/Airbus DS, USDA, USGS, AeroGRID, IGN, SIA, and GEBCO. Used under license.



FEATURES KEY

- | | | |
|---|---------------------------------------|--|
| G - First National Bank/Graham Building | W - Church & Pre-School | BB - Swaney Memorial Library |
| H - McNeil Building | X - City Hall & Board of Education | CG - Columbia Gas Transmission Station |
| I - Auto Repair / Service Station | Y - Law Office | DD - Daniels House |
| M - Northbrooke Church | CP1 - New Cumberland City Park | PR - Private Recreation |
| P - Smith Oil Company | CP2 - S. Chester Street Playground | RR - Railroad Building |
| Q - Champ's Auto | CP3 - Pride Park | W2 - Ware 2 Store It |
| U - County Office | AA - First United Presbyterian Church | WW - City Wastewater Treatment Plant |
| V - Courthouse | | |

Legend

- Business
- Community Facility
- Residential
- Vacant/Unidentified Business
- NRHP Individually Eligible
- NRHP Listed
- Wetlands

SKELLY and LOY Inc. 2019. All Rights Reserved. Google Earth Pro 7.3.0.1073. CR 5/24/2019 10:31:15 AM. D:\Projects\2019\19-001\19-001_05_11_19_10_31_15 AM.dwg

WEST VIRGINIA DIVISION OF HIGHWAYS	
WV 2 IMPROVEMENTS - NEW CUMBERLAND MADISON STREET AND CHESTER STREET INTERSECTION AND WIDENING CITY OF NEW CUMBERLAND HANCOCK COUNTY, WEST VIRGINIA	
ENVIRONMENTAL FEATURES AND ALTERNATIVE 5A	
	<small>SKELLY and LOY Inc. CONSULTANTS IN ENVIRONMENT - ENERGY ENGINEERING - PLANNING</small>



DATE:

Mr. RJ Scites, P.E.
Director, Engineering Division
West Virginia Division of Highways
1334 Smith Street
Charleston, West Virginia 25301

DATE: Tuesday, September 17, 2019
LOCATION: John D. Rockefeller IV Career Center (IMC Room)
SUBJECT: INFORMATIONAL PUBLIC WORKSHOP
PROJECT: WV 2 – New Cumberland Project
State Project # U215-2-6.20
Federal Project # N/A
Hancock County

COMMENTS DUE BY: Thursday, October 17, 2019

Please consider the following comments:

(Please print the following information)

NAME:

ADDRESS:

ORGANIZATION (IF ANY):

How did you hear about the Informational Public Workshop?

Project Information and Comment Sheets

Can be found online at our WVDOH Website at <http://go.wv.gov/dotcomment>.

Under Engineering Projects, Open, and then click WV 2 – New Cumberland.