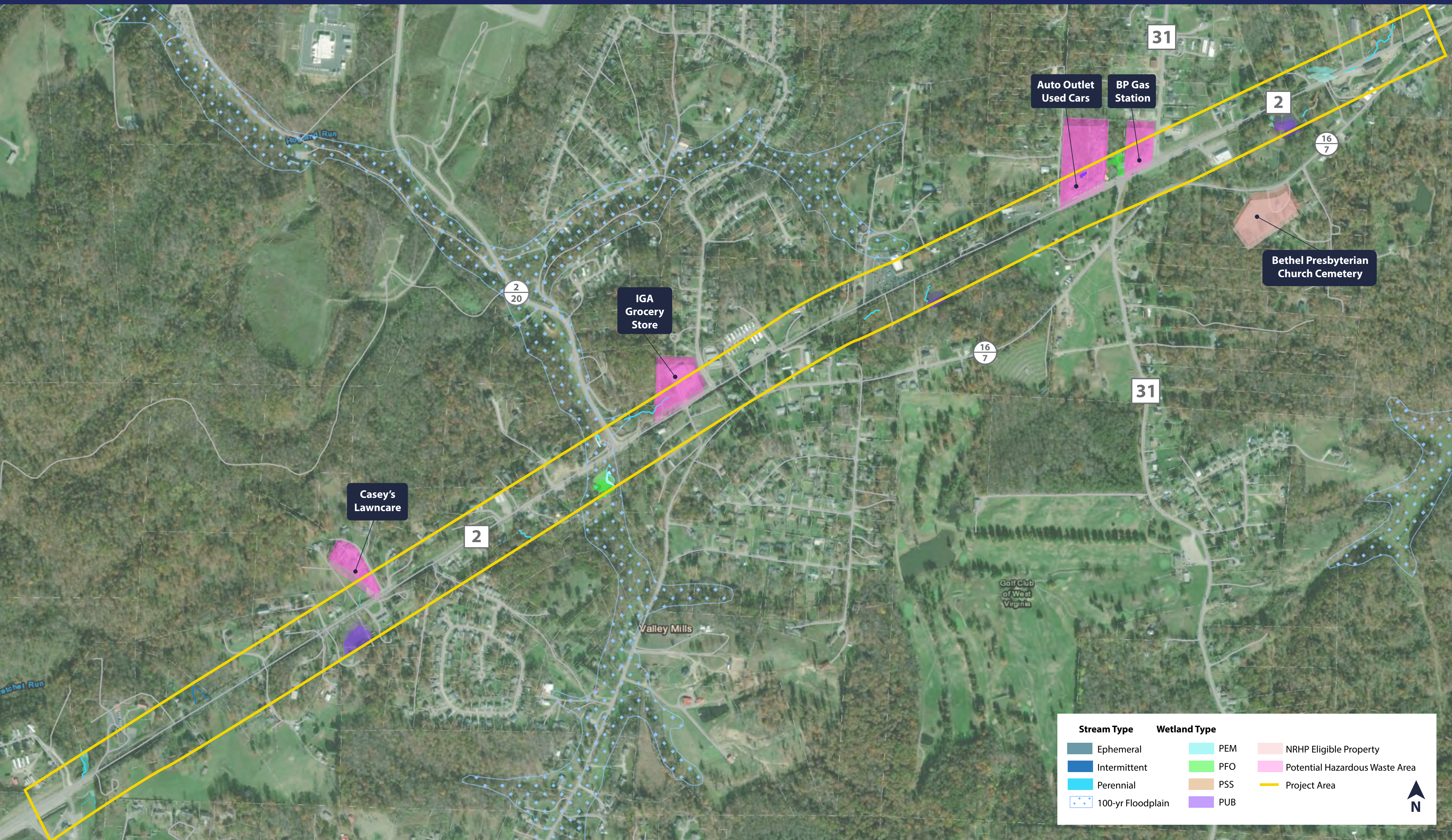


WV 2 PARKERSBURG TO ST. MARYS ROAD

FONSI REEVALUATION AND ENVIRONMENTAL RESOURCES



What is a Reevaluation?

A reevaluation is the process to determine whether a NEPA decision for a project remains valid.

What is the purpose of a Reevaluation?

The purpose of the reevaluation is to assess changes that may have occurred between the time the Finding of No Significant Impact was signed by the Federal Highway Administration in 2002 and the proposed changes to Preferred Alternative 4 that is currently under study. If there are significant changes, then a new NEPA document will need to be prepared.

WVDOH has initiated a reevaluation of the FONSI which includes additional assessment of cultural, natural, and socioeconomic resources.

PRELIMINARY ENVIRONMENTAL IMPACTS

ENVIRONMENTAL FEATURE	Meets Purpose and Need	Consistent with State and Local Plan	Improves Safety	Number of Displacements			Water Resource Impacts			Threatened and Endangered Species	Cultural Impacts		Land Use	Air Quality	Noise	Socioeconomic Impact	Hazardous Materials
				Residences	Businesses	Church	Wetlands Impacted	Stream Impacts	Floodplain Encroachment		Historic	Archaeological					
2018 MODIFIED ALTERNATIVE 4	Yes	Yes	Yes	18	3	0	1.25 ac.	2,425 lf	Minimal	None	Studies Ongoing	Studies Ongoing	None	Studies Ongoing	Studies Ongoing	Reduced traffic congestion, delay, and accidents	USTs at 1 location