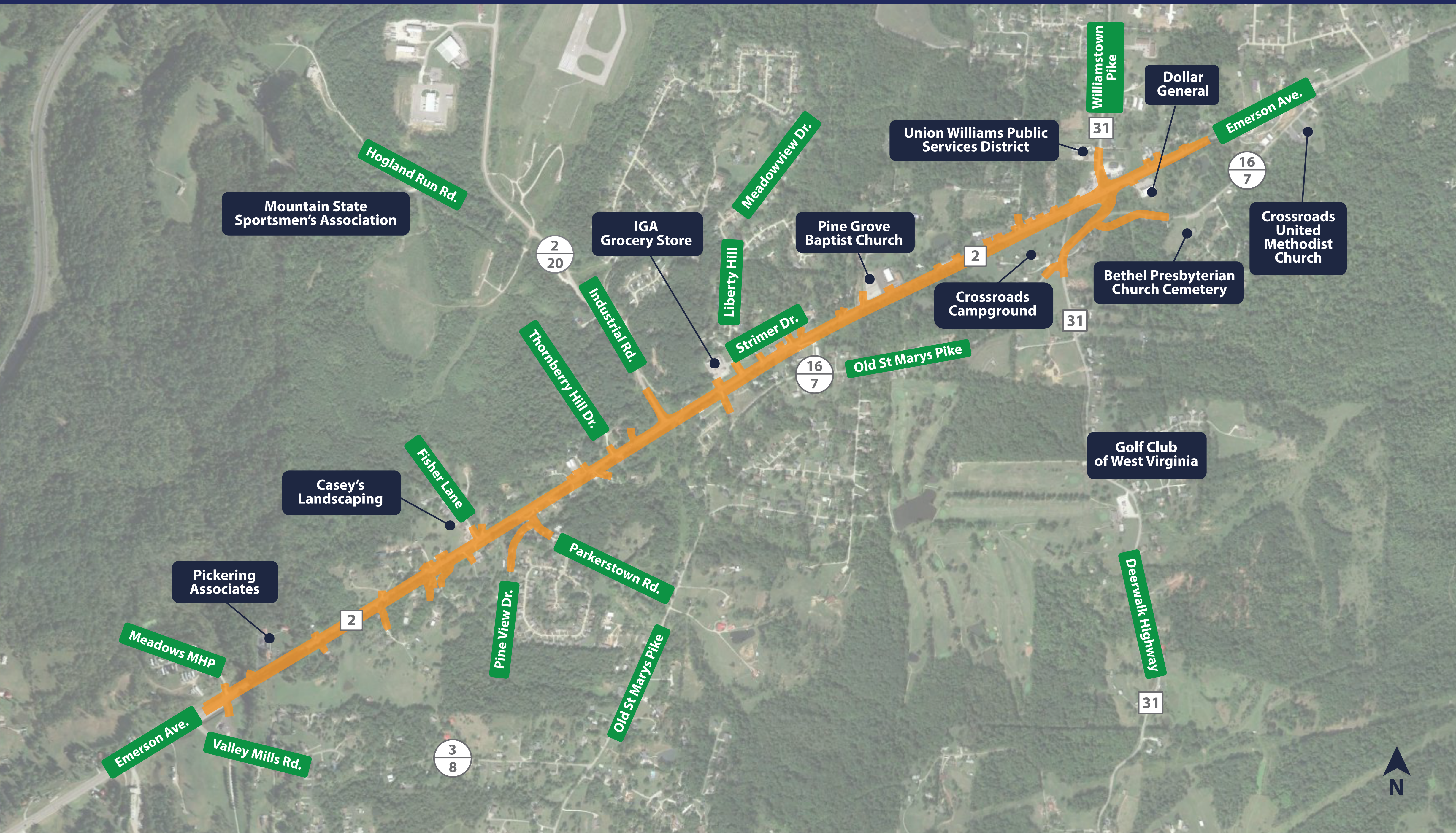


WV 2 PARKERSBURG TO ST. MARYS ROAD

PROPOSED BUILD ALTERNATIVE 4



The new roadway will be similar to the roadway that has already been constructed. It will provide two northbound lanes, two southbound lanes, a continuous center turn lane and paved shoulders. Roadway widening will continue along the right side of the roadway until it approaches WV 31. The roadway will transition back to the existing two lane configuration north of WV 31.

This alternative is a modification to the 2002 Preferred Alternative 4, which included a combination widening on both sides of WV 2. During preliminary design review it was determined that widening this section entirely to the right would significantly reduce impacts to utilities, including the relatively new sanitary sewer facilities which were installed after the 2002 environmental studies and preliminary engineering design were completed.

Currently WV 31 has an offset intersection configuration with WV 2. The new design will provide a reconstructed plus intersection with a traffic signal which is safer and more efficient for drivers.

Typical Sections

