

West Virginia Division of Highways Preferred Alternative Announcement

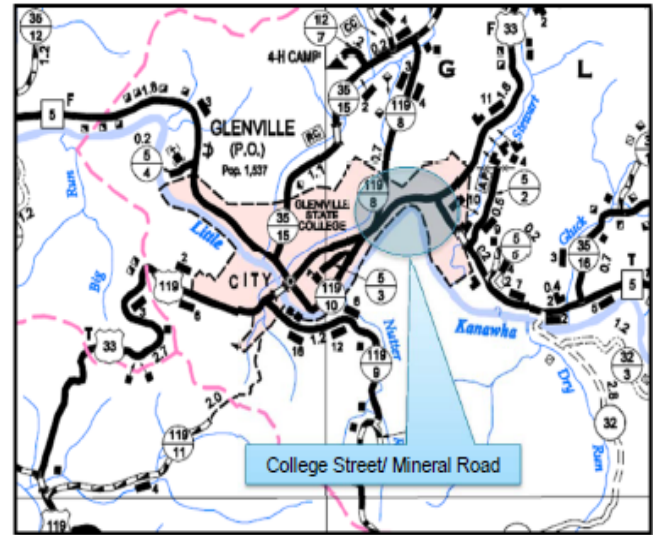
College Street and Mineral Road Project

State Project U311-33-17.30 00

Federal Project STP-0033(372)D

Glennville, WV

Gilmer County



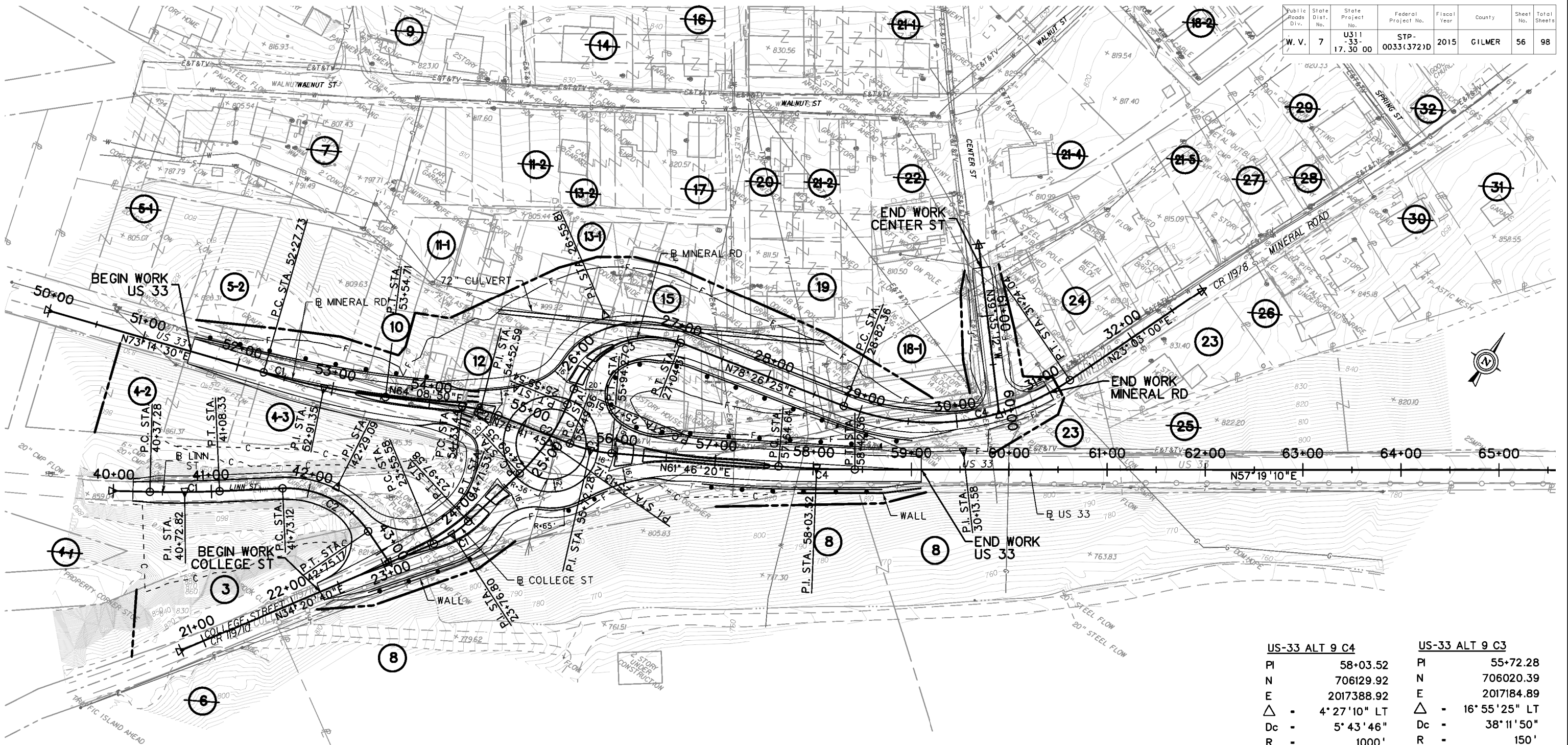
The West Virginia Division of Highways has chosen a preferred alternative for the College Street and Mineral Road Project which carries US 33 at these intersections. After the public meeting held on October 19, 2015, and in consideration of the comments submitted following the meeting, Alternative #9 has been chosen as the preferred alternative for this project.

Alternative #9 consists of relocating and combining the existing US 33/College Street and US 33/Mineral Road intersections to a single lane roundabout intersection. A 16' wide circulating lane and 13' wide truck apron is provided in the roundabout. Proposed lane widths are 12' wide along US 33, 11' wide along College Street, Mineral Road, and Linn Street and 10' along Center Street.

Our project schedule anticipates right of way activities to start in the fall of 2016 and construction to begin in late 2017 or early 2018. We are currently in the process of completing the environmental related requirements for this project.

All this information can be found on our WVDOH Website, <http://go.wv.gov/dotcomment>, under public comments, engineering projects, open, then College Street and Mineral Road Project

Public Roads Div.	State Dist. No.	State Project No.	Federal Project No.	Fiscal Year	County	Sheet No.	Total Sheets
W. V.	7	U311-33-17.30.00	STP-0033(372)D	2015	GILMER	56	98



CLG-MNL ST ALT 9 C1	CLG-MNL ST ALT 9 C2	CLG-MNL ST ALT 9 C3	CLG-MNL ST ALT 9 C4	LINN ST ALT 9 C1
PI 23+76.79	PI 25+13.12	PI 26+55.81	PI 30+13.58	PI 40+72.82
N 705872.64	N 706005.17	N 706146.85	N 706225.52	N 705761.22
E 2017113.51	E 2017147.26	E 2017121.25	E 2017505.86	E 2016859.41
Δ - 20° 03' 20" LT	Δ - 24° 41' 35" LT	Δ - 88° 50' 40" RT	Δ - 55° 23' 25" LT	Δ - 4° 04' 15" LT
Dc - 47° 44' 47"	Dc - 28° 38' 52"	Dc - 67° 24' 24"	Dc - 22° 55' 06"	Dc - 5° 43' 46"
R - 120'	R - 200'	R - 85'	R - 250'	R - 1000'
L - 42.00'	L - 86.20'	L - 131.80'	L - 241.69'	L - 71.05'
T - 21.22'	T - 43.78'	T - 83.30'	T - 131.23'	T - 35.54'
SE - -4.00%	SE - -4.00%	SE - 4.00%	SE - -4.00%	SE - -2.32%
PC 23+55.58	PC 24+69.35	PC 25+72.51	PC 28+82.36	PC 40+37.28
PT 23+97.58	PT 25+55.54	PT 27+04.31	PT 31+24.04	PT 41+08.33

LINN ST ALT 9 C2	US-33 ALT 9 C1	US-33 ALT 9 C2
PI 42+29.09	PI 52+91.35	PI 54+52.59
N 705851.56	N 705926.47	N 705996.89
E 2016986.96	E 2016921.98	E 2017067.32
Δ - 58° 28' 20" RT	Δ - 9° 05' 40" LT	Δ - 14° 32' 55" RT
Dc - 57° 17' 45"	Dc - 7° 09' 43"	Dc - 38° 11' 50"
R - 100'	R - 800'	R - 150'
L - 102.05'	L - 126.98'	L - 38.09'
T - 55.97'	T - 63.62'	T - 19.15'
SE - 4.00%	SE - ----%	SE - ----%
PC 41+73.12	PC 52+27.73	PC 54+33.44
PT 42+75.17	PT 53+54.71	PT 54+71.53

US-33 ALT 9 C4	US-33 ALT 9 C3
PI 58+03.52	PI 55+72.28
N 706129.92	N 706020.39
E 2017388.92	E 2017184.89
Δ - 4° 27' 10" LT	Δ - 16° 55' 25" LT
Dc - 5° 43' 46"	Dc - 38° 11' 50"
R - 1000'	R - 150'
L - 77.72'	L - 44.31'
T - 38.88'	T - 22.32'
SE - ----%	SE - -2.65%
PC 57+64.64	PC 55+49.96
PT 58+42.36	PT 55+94.27

LEGEND

- PROPOSED RIGHT OF WAY
- - - EXISTING RIGHT OF WAY
- PROPERTY LINE

 HDR ENGINEERING INC. WEIRTON, WV 304-748-8740	REVISION	SHEET	REVISION	DATE	BY
	NUMBER	NUMBER	NUMBER		

THE WEST VIRGINIA DEPARTMENT OF TRANSPORTATION
 DIVISION OF HIGHWAYS
**COLLEGE STREET
 PLAN ALT. 9**

SCALE : 0 50 ft.