

Workshop Public Meeting
WVDOH Materials Building



WV Department of Transportation
Division of Highways
State Project S320-60/29-1.83

Dry Branch Bridge Replacement
Kanawha County
May 24, 2011

Dry Branch Bridge Replacement

STATE PROJECT S320-60/29-1.83

The Dry Branch Bridge was built in 1940 by an unknown contractor and renovated in 1976 by State Forces. The bridge consists of two simple spans steel deck girders with a roadway width of 23 feet 2 inches, and overall bridge length of 93 feet 6 inches. The bridge is listed in fair condition.

The purpose of the project is to replace the existing bridge to meet current design standards including suitable weight limits to efficiently and effectively serve the residential, commercial and business community.

The proposed project will remove the existing bridge and replace it with a single-span bridge of approximately 105 feet in length with a 28 foot clear width with two 12-foot lanes and 2-foot shoulders. Traffic will be detoured over existing routes as shown on the 11x 17 color aerial map along with the city map.

Detour Routes are summarized below:

- The Northbound Detour Traffic- Turn right from CR 60/29 onto US 60 ramp, follow US 60 along I-77 to Kanawha Blvd exit turn right on ramp, turn right on CR 60/29. The northbound detour will be approximately 2.2 miles.
- The Southbound Detour Traffic- Follow CR 60/29 to Snow Hill Intersection, turn left and follow ramp to Kanawha Blvd. Turn left on US 60, Follow US 60 to Campbells Creek, turn left onto CR 73, turn left on CR 60/29. The southbound detour will be approximately 4.3 miles.

The purpose of this informational workshop public meeting is to afford participants an opportunity to ask questions and state their views and opinions on the bridge replacement project.

Your **comments are important**: comment sheets will be provided at the workshops; they can be dropped in a comment box at the workshop, or mailed to:

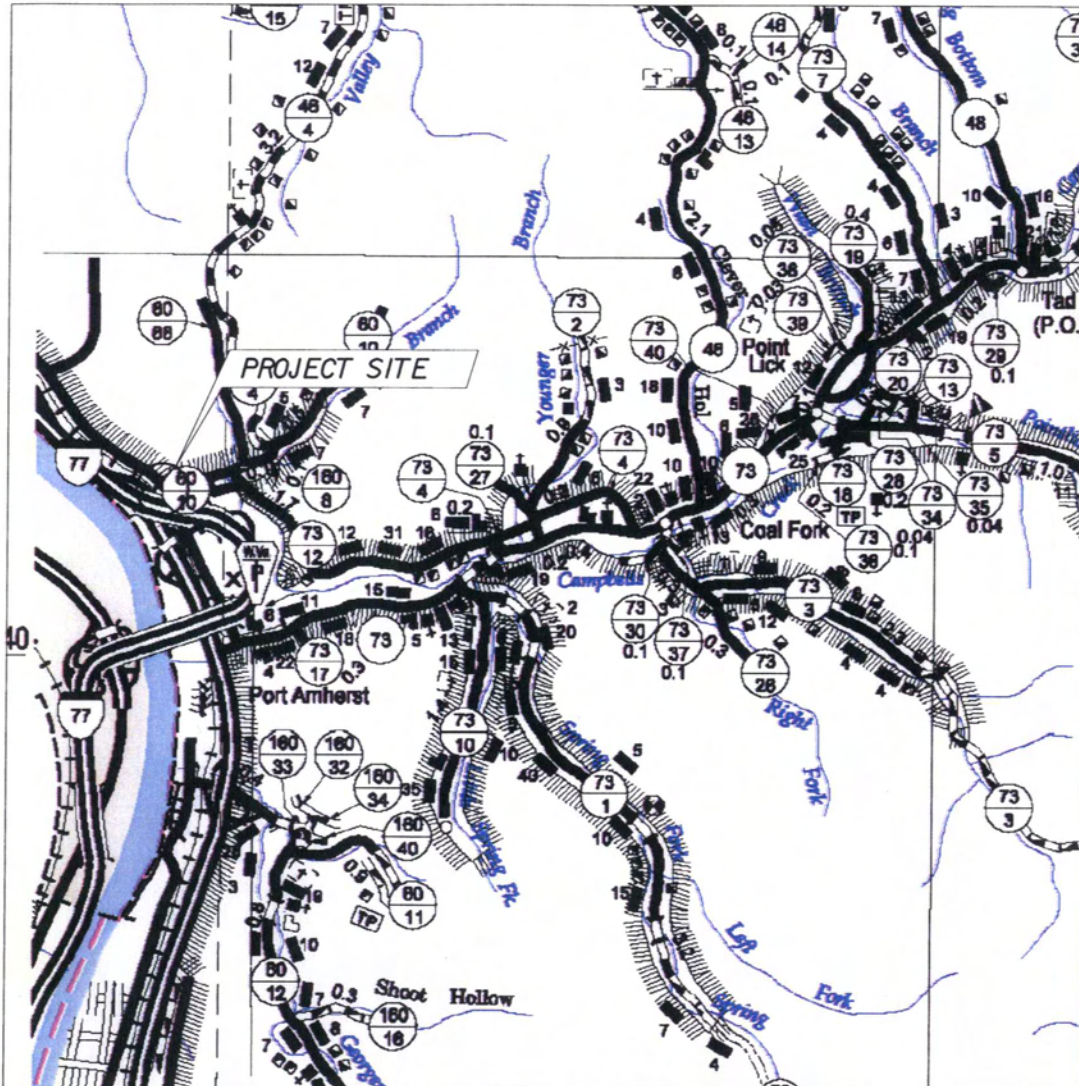
Gregory Bailey, P.E., Director, Engineering Division
West Virginia Division of Highways
Capital Complex Building Five, Room 317
1900 Kanawha Boulevard East
Charleston, West Virginia 25305-0430

Any additional questions or comments can be sent to Sondra Mullins (Sondra.L.Mullins@wv.gov) or Traci Cummings (Traci.L.Cummings@wv.gov) or visit the WVDOH Website at www.transportation.wv.gov for project information and the opportunity to comment on the project. **Comments are due by June 27, 2011.**

This project will be processed as a Categorical Exclusion to clear the Environmental (NEPA) requirement.

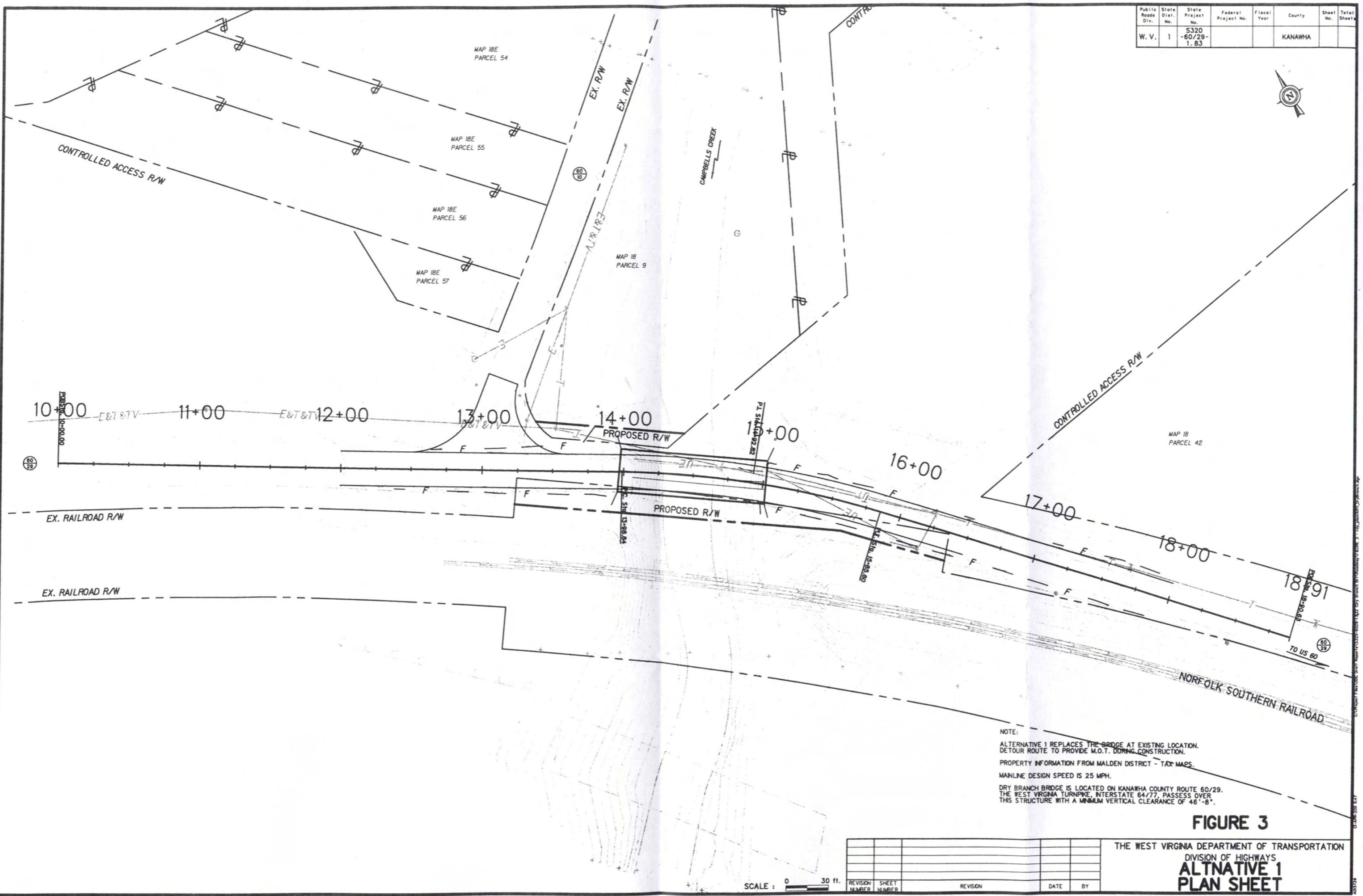
BRIDGE REPLACEMENT STUDY
DRY BRANCH BRIDGE
STATE PROJECT NO. S320-60/29-1.83

KANAWHA COUNTY



WEST VIRGINIA DEPARTMENT OF TRANSPORTATION
DIVISION OF HIGHWAYS
ENGINEERING DIVISION
APRIL 2011

Public Roads Div.	State Dist. No.	State Project No.	Federal Project No.	Fiscal Year	County	Sheet No.	Total Sheets
W. V.	1	S320-60/29-1.83			KANAWHA		



NOTE:
 ALTERNATIVE 1 REPLACES THE BRIDGE AT EXISTING LOCATION.
 DETOUR ROUTE TO PROVIDE M.O.T. DURING CONSTRUCTION.
 PROPERTY INFORMATION FROM MALDEN DISTRICT - TAX MAPS.
 MAINLINE DESIGN SPEED IS 25 MPH.
 DRY BRANCH BRIDGE IS LOCATED ON KANAWHA COUNTY ROUTE 60/29.
 THE WEST VIRGINIA TURNPIKE, INTERSTATE 64/77, PASSES OVER
 THIS STRUCTURE WITH A MINIMUM VERTICAL CLEARANCE OF 46'-8".

FIGURE 3

THE WEST VIRGINIA DEPARTMENT OF TRANSPORTATION
 DIVISION OF HIGHWAYS
ALTNATIVE 1
PLAN SHEET

SCALE : 0 30 ft.

REVISION NUMBER	SHEET NUMBER	REVISION	DATE	BY

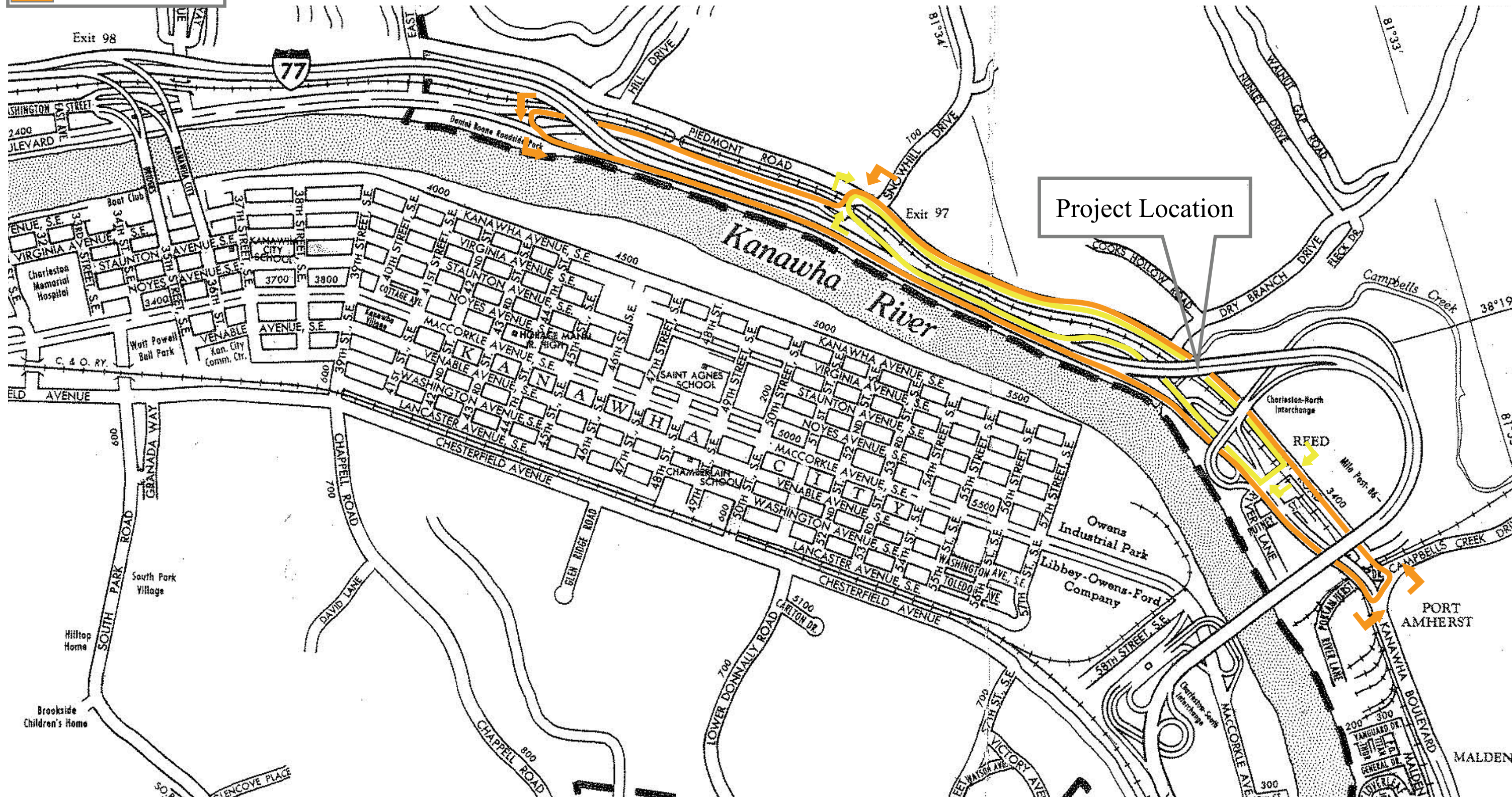
Legend

- Northbound Route
- Southbound Route

Detour Routes

Dry Branch Bridge Replacement

S320-60/26-1.83



Project Location

PORT AMHERST

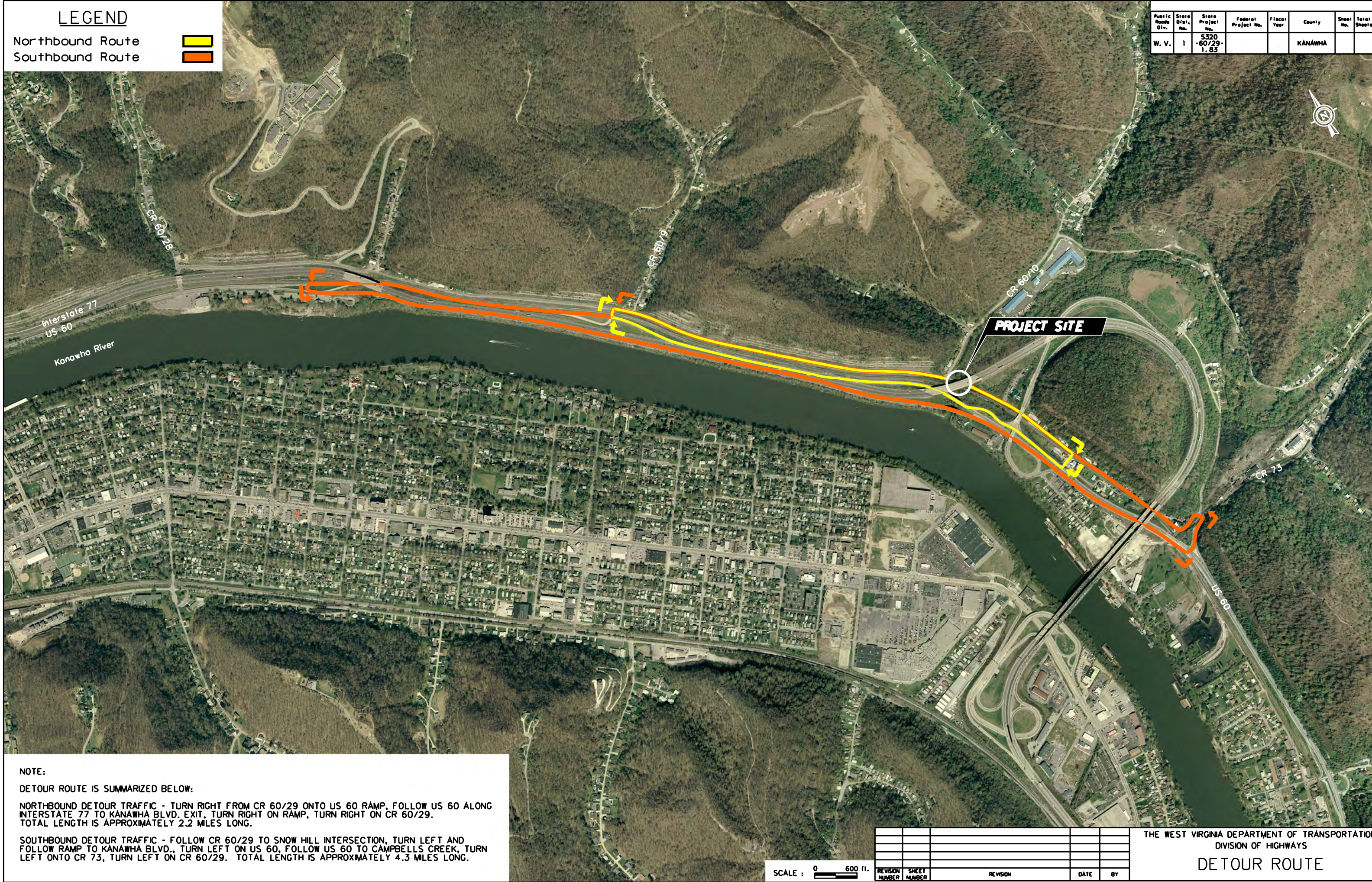
MALDEN

LEGEND

Northbound Route
Southbound Route



Public Roads Dist.	State Dist. No.	State Project No.	Federal Project No.	Fiscal Year	County	Sheet No.	Total Sheets
W. V.	1	5320-60/29-1.85			KANAWHA		



NOTE:

DETOUR ROUTE IS SUMMARIZED BELOW:

NORTHBOUND DETOUR TRAFFIC - TURN RIGHT FROM CR 60/29 ONTO US 60 RAMP, FOLLOW US 60 ALONG INTERSTATE 77 TO KANAWHA BLVD. EXIT, TURN RIGHT ON RAMP, TURN RIGHT ON CR 60/29. TOTAL LENGTH IS APPROXIMATELY 2.2 MILES LONG.

SOUTHBOUND DETOUR TRAFFIC - FOLLOW CR 60/29 TO SNOW HILL INTERSECTION, TURN LEFT AND FOLLOW RAMP TO KANAWHA BLVD., TURN LEFT ON US 60, FOLLOW US 60 TO CAMPBELLS CREEK, TURN LEFT ONTO CR 73, TURN LEFT ON CR 60/29. TOTAL LENGTH IS APPROXIMATELY 4.3 MILES LONG.

SCALE : 0 600 ft.

REVISION NUMBER	SHEET NUMBER	REVISION	DATE	BY

THE WEST VIRGINIA DEPARTMENT OF TRANSPORTATION
DIVISION OF HIGHWAYS
DETOUR ROUTE