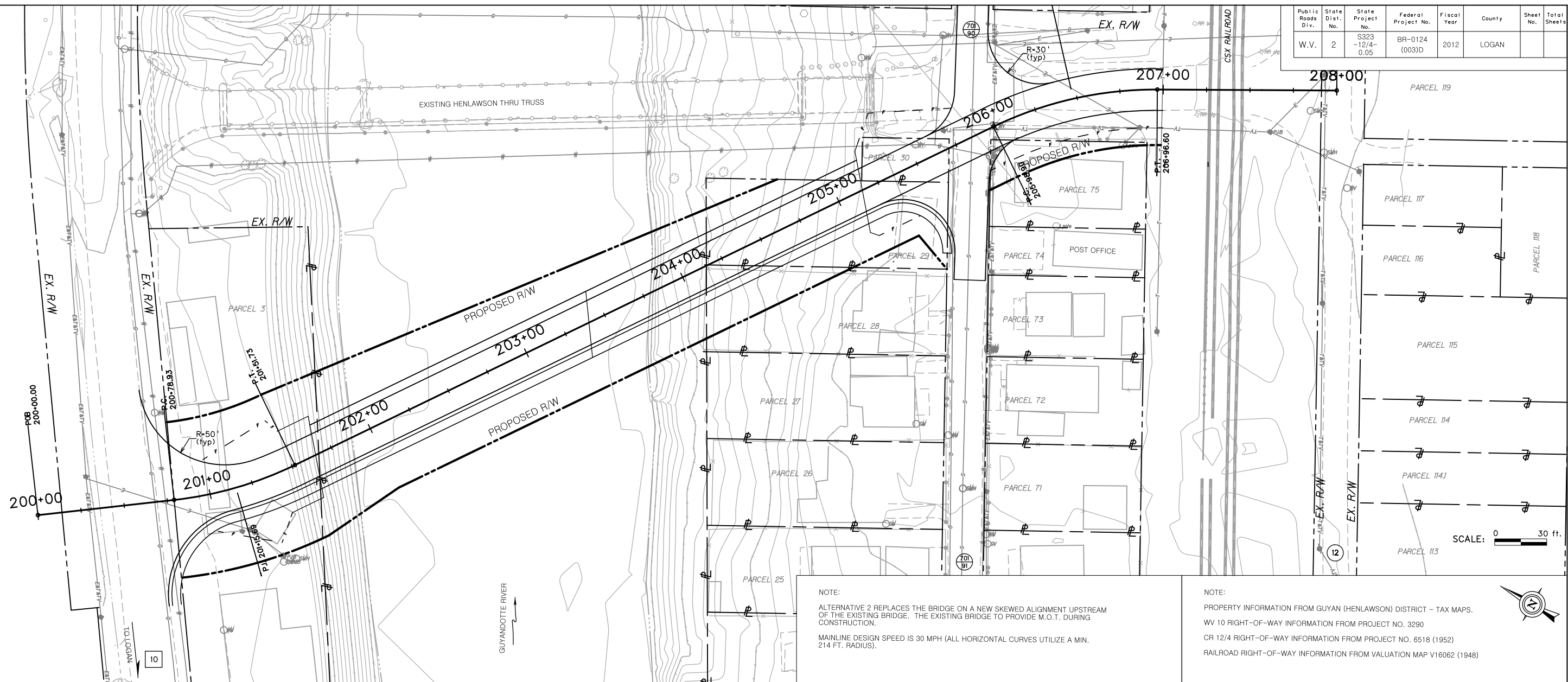
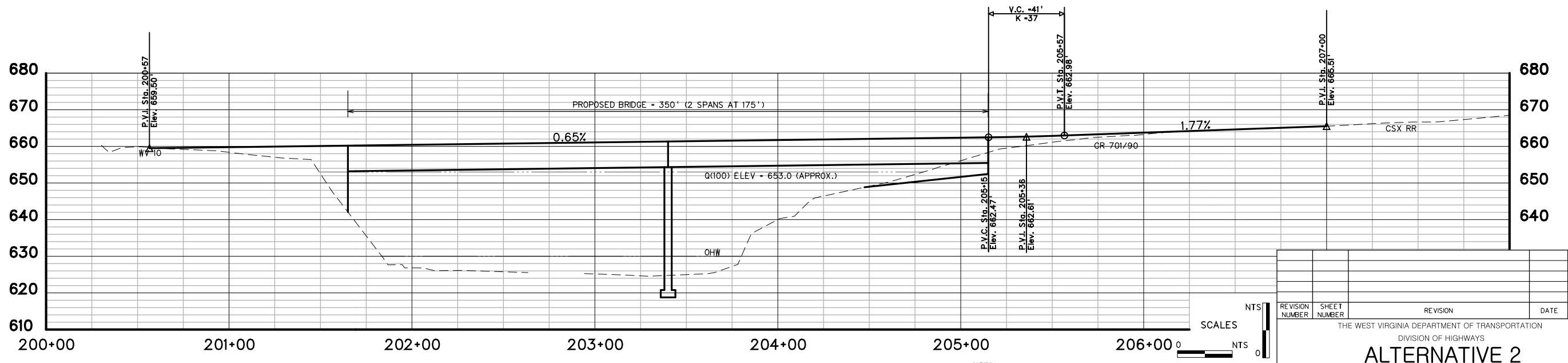


| | | | | | | | |
|-------------------|-----------------|-------------------|---------------------|-------------|--------|-----------|--------------|
| Public Roads Div. | State Dist. No. | State Project No. | Federal Project No. | Fiscal Year | County | Sheet No. | Total Sheets |
| W.V. | 2 | S323-12/4-0.05 | BR-0124 (003)D | 2012 | LOGAN | | |



NOTE:
 ALTERNATIVE 2 REPLACES THE BRIDGE ON A NEW SKEWED ALIGNMENT UPSTREAM OF THE EXISTING BRIDGE. THE EXISTING BRIDGE TO PROVIDE M.O.T. DURING CONSTRUCTION.
 MAINLINE DESIGN SPEED IS 30 MPH (ALL HORIZONTAL CURVES UTILIZE A MIN. 214 FT. RADIUS).

NOTE:
 PROPERTY INFORMATION FROM GUYAN (HENLAWSON) DISTRICT - TAX MAPS.
 WV 10 RIGHT-OF-WAY INFORMATION FROM PROJECT NO. 3290
 CR 12/4 RIGHT-OF-WAY INFORMATION FROM PROJECT NO. 6518 (1952)
 RAILROAD RIGHT-OF-WAY INFORMATION FROM VALUATION MAP V16062 (1948)



NOTE:
 VERTICAL SCALE EXAGGERATED 2:1
 FIGURE 4

| REVISION NUMBER | SHEET NUMBER | REVISION | DATE | BY |
|-----------------|--------------|----------|------|----|
| | | | | |

THE WEST VIRGINIA DEPARTMENT OF TRANSPORTATION
 DIVISION OF HIGHWAYS
**ALTERNATIVE 2
 PLAN & PROFILE SHEET**