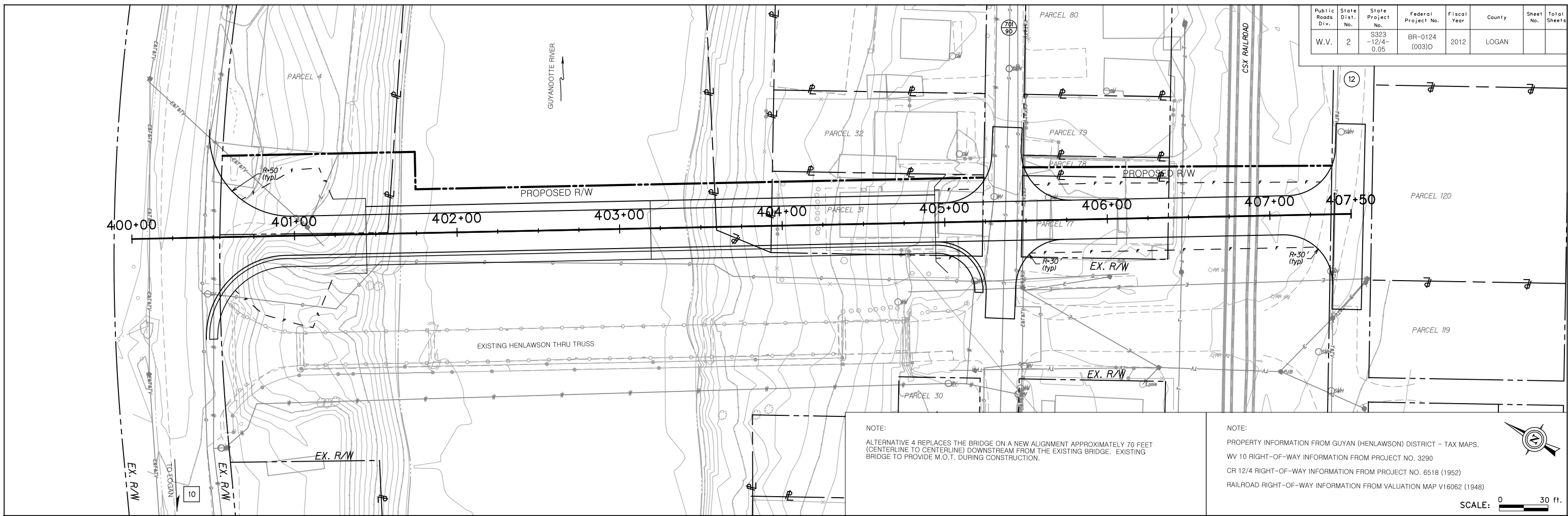


Public Roads Div.	State Dist. No.	State Project No.	Federal Project No.	Fiscal Year	County	Sheet No.	Total Sheets
W.V.	2	S323-12/4-0.05	BR-0124 (003)D	2012	LOGAN		

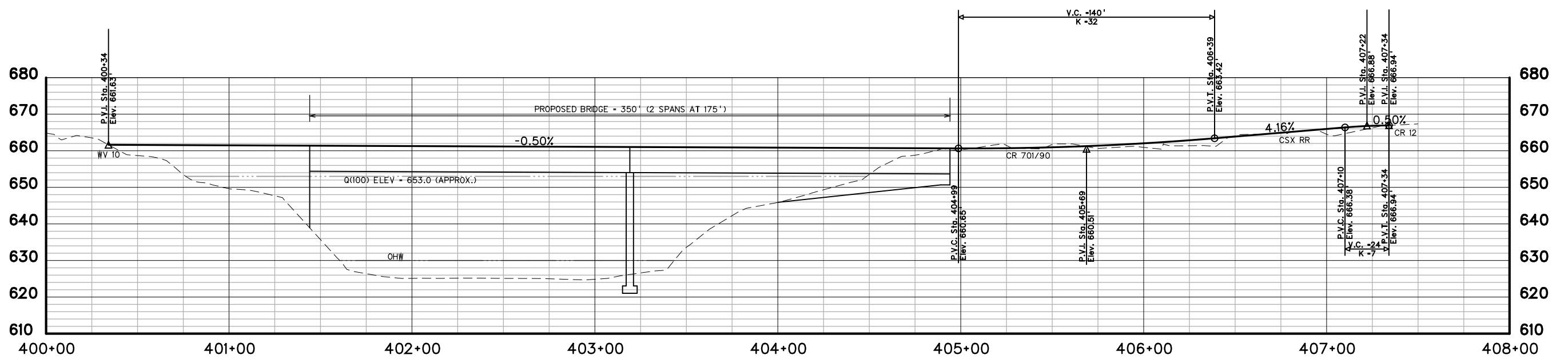


NOTE:
 ALTERNATIVE 4 REPLACES THE BRIDGE ON A NEW ALIGNMENT APPROXIMATELY 70 FEET (CENTERLINE TO CENTERLINE) DOWNSTREAM FROM THE EXISTING BRIDGE. EXISTING BRIDGE TO PROVIDE M.O.T. DURING CONSTRUCTION.

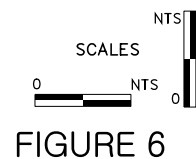
NOTE:
 PROPERTY INFORMATION FROM GUYAN (HENLAWSON) DISTRICT - TAX MAPS.
 WV 10 RIGHT-OF-WAY INFORMATION FROM PROJECT NO. 3290
 CR 12/4 RIGHT-OF-WAY INFORMATION FROM PROJECT NO. 6518 (1952)
 RAILROAD RIGHT-OF-WAY INFORMATION FROM VALUATION MAP V16062 (1948)



SCALE: 0 30 ft.



NOTE:
 VERTICAL SCALE EXAGGERATED 2:1



REVISION NUMBER	SHEET NUMBER	REVISION	DATE	BY

THE WEST VIRGINIA DEPARTMENT OF TRANSPORTATION
 DIVISION OF HIGHWAYS

ALTERNATIVE 4 PLAN & PROFILE SHEET