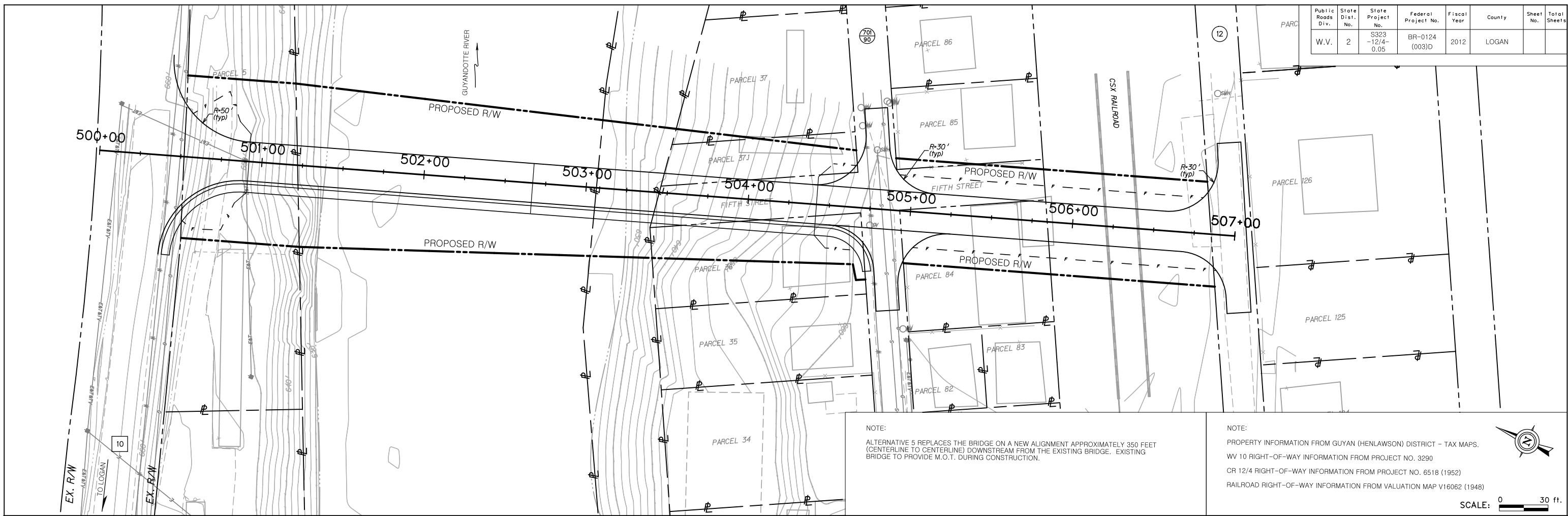


Public Roads Div.	State Dist. No.	State Project No.	Federal Project No.	Fiscal Year	County	Sheet No.	Total Sheets
W.V.	2	S323-12/4-0.05	BR-0124(003)D	2012	LOGAN		

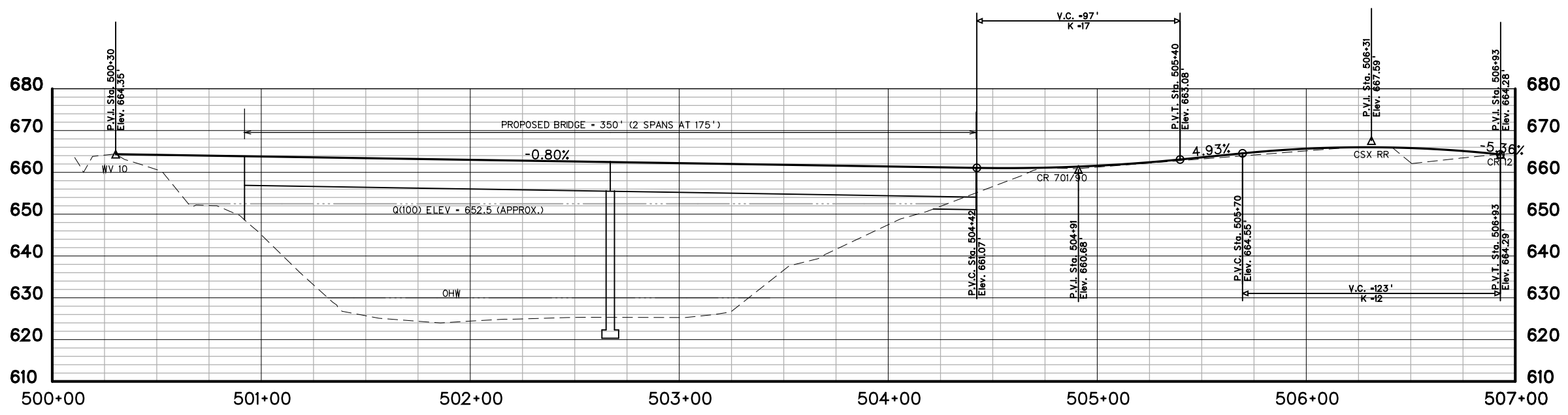


NOTE:  
 ALTERNATIVE 5 REPLACES THE BRIDGE ON A NEW ALIGNMENT APPROXIMATELY 350 FEET (CENTERLINE TO CENTERLINE) DOWNSTREAM FROM THE EXISTING BRIDGE. EXISTING BRIDGE TO PROVIDE M.O.T. DURING CONSTRUCTION.

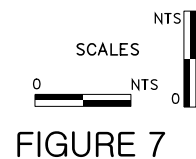
NOTE:  
 PROPERTY INFORMATION FROM GUYAN (HENLAWSON) DISTRICT - TAX MAPS.  
 WV 10 RIGHT-OF-WAY INFORMATION FROM PROJECT NO. 3290  
 CR 12/4 RIGHT-OF-WAY INFORMATION FROM PROJECT NO. 6518 (1952)  
 RAILROAD RIGHT-OF-WAY INFORMATION FROM VALUATION MAP V16062 (1948)



SCALE: 0 30 ft.



NOTE:  
 VERTICAL SCALE EXAGGERATED 2:1



REVISION NUMBER	SHEET NUMBER	REVISION	DATE	BY

THE WEST VIRGINIA DEPARTMENT OF TRANSPORTATION  
 DIVISION OF HIGHWAYS

## ALTERNATIVE 5 PLAN & PROFILE SHEET