

Preferred Alternative and Potential Impacts

Four potential alignments have been studied for the project. For engineering and environmental reasons, Alignments A, B, and C have been dropped from consideration and Modified Alignment C is recommended as the preferred alternative. Modified Alignment C, shown on the center of this brochure, consists of a three-lane roadway with two 11-foot travel lanes and a center turning lane. The proposed upgrade begins near the eastbound ramp of I-64 and ends near Cedar Crest Drive (CR 44). New intersections will be constructed at High School Road, Woodville Drive (CR 46), Mount Union Road (CR 39), James Kilowatt Road (CR 10/15), and Green Valley Road (CR 35 south). The intersections at Norwood Road (CR 35 north) and Orchard Road will be reconfigured to utilize a portion of existing WV 10 as a local access street. The length of the Preferred Alternative is approximately 2.3 miles and the construction cost is estimated to be \$12.3 million. The impacts of the Preferred Alternative, compared to no action, are shown below.

Resource/Element	No-Build Alternative	Modified Alignment C
Environmental Justice	Minimal	None
Tax Base	None	Negligible
Business Displacements	0	1
Residential Displacements	0	3 occupied, 5 vacant
Community Facilities and Services	0	1 church, 1 park-and-ride lot, 1 sliver take at a school
Community Cohesion	Unlikely	None
Farmlands	Minimal	2.6 acres
Parks and Recreation	Unlikely	0
Forested Land	Minimal	6.9 acres
Developed Land	Minimal	22.5 acres
Rare, Threatened, and Endangered Species	Unlikely	0
Jurisdictional Streams	Minimal	2,105 feet
Floodplains	Minimal	4.7 acres
Wetlands	Minimal	1.46 acres
Groundwater	None	None
Air Quality	Consistent with Clean Air Act standards	Consistent with Clean Air Act standards
Noise	10 residences	3 residences
Potentially Hazardous Waste Sites	Minimal	1 sliver take
Cultural Resources (National Register of Historic Places Listed or Eligible)	0	0
Utilities	0	Minimal
Secondary Impacts	Minimal	Minimal, likely to be positive
Cumulative Impacts	Mostly positive	Mostly positive
Temporary Construction Impacts	Yes	Yes
Energy	Most likely positive	Positive
Section 4(f) Resources	0	0
Cost	Project Dependent	\$12.3 million



WELCOME



**Informational Workshop
Public Meeting
Melissa-Huntington Road Project**

State Project Number: U306-10-13.35 00 / Federal Project Number: STP-0010(095)EQ

**Huntington High School
Thursday, August 7, 2014 / 4:00 PM to 7:00 PM**

Purpose of Today's Meeting

The West Virginia Department of Transportation Division of Highways (WVDOH) is conducting this informational workshop public meeting on the Environmental Assessment (EA) for the Melissa-Huntington Road Project. The project is an upgrade of existing WV 10 to three lanes, partially built on new alignment and partially located within the existing roadway right-of-way. Environmental studies have been done by the WVDOH in cooperation with the Federal Highway Administration (FHWA) to fulfill requirements set forth in both the *National Environmental Policy Act of 1969* (NEPA) and the *Safe, Accountable, Flexible, Efficient Transportation Equity Act: A Legacy for Users* (SAFETEA-LU).

Project Overview

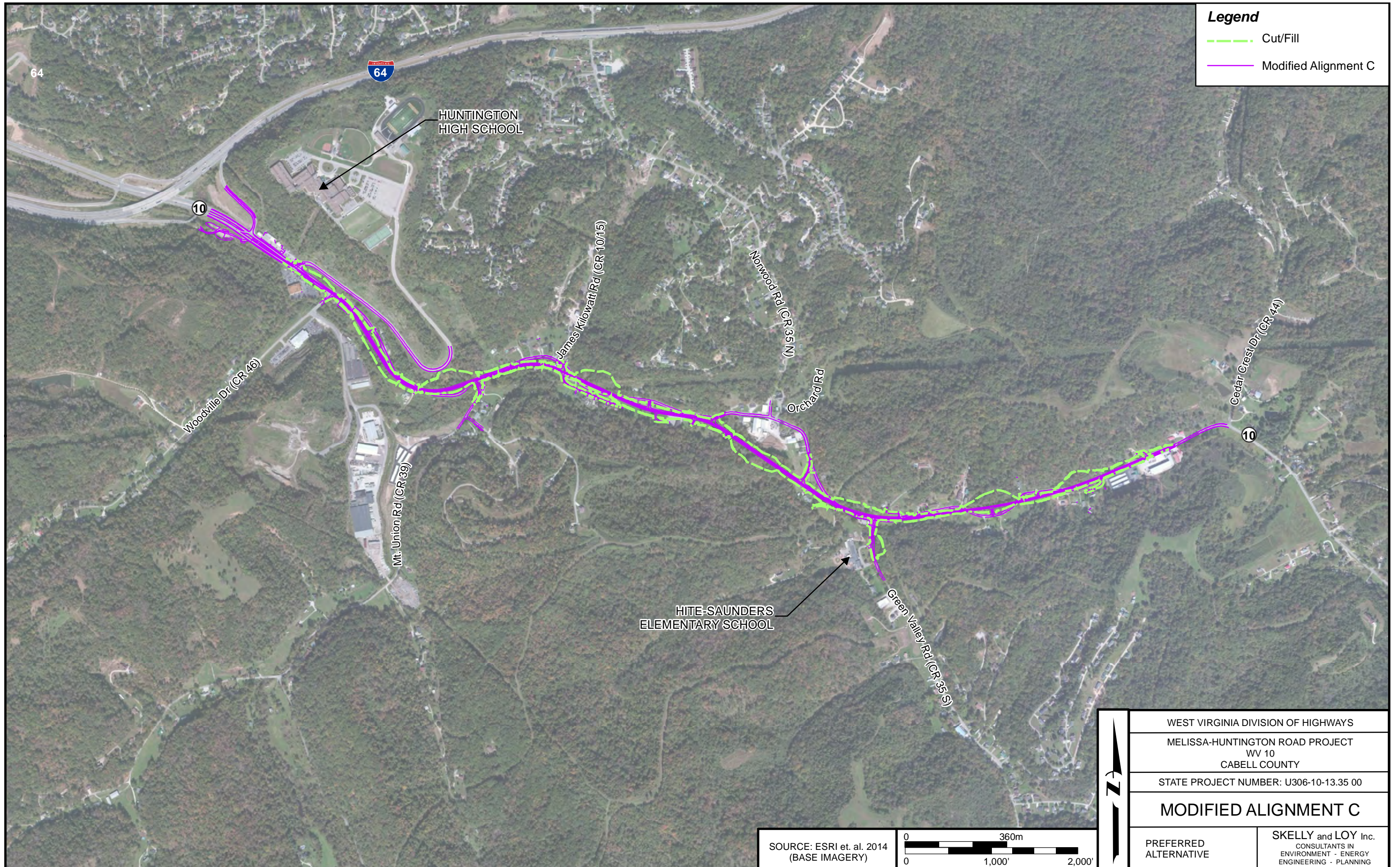
The purpose and need for the project is to alleviate traffic congestion and improve level of service; to improve safety; to provide efficient access to the Huntington area and Huntington High school; and to stimulate economic development. Transportation improvements along WV 10 between the City of Huntington and the community of Melissa have been studied since the late 1960s and early 1970s, but the proposed project lay dormant for many years. An initial EA was prepared for the project in September 2002, but not carried through to a *Finding of No Significant Impact* (FONSI). The FHWA approved the current EA on June 9, 2014.

Comments

Your comments are very important to us. Comments on the Environmental Assessment are due by September 8, 2014, and can be returned to any WVDOH representative here today or sent to the following:

Mr. R.J. Scites, P.E., Director, Engineering Division
West Virginia Division of Highways
State Capitol Complex, Building 5, Room 317
1900 Kanawha Boulevard, East
Charleston, WV 25305

Comments can also be sent by email to Sondra Mullins (Sondra.L.Mullins@wv.gov) or submitted by visiting the WVDOH website at <http://go.wv.gov/dotcomment>.



Legend

- Cut/Fill
- Modified Alignment C

	WEST VIRGINIA DIVISION OF HIGHWAYS
	MELISSA-HUNTINGTON ROAD PROJECT WV 10 CABELL COUNTY
	STATE PROJECT NUMBER: U306-10-13.35 00
	MODIFIED ALIGNMENT C
PREFERRED ALTERNATIVE	SKELLY and LOY Inc. CONSULTANTS IN ENVIRONMENT - ENERGY ENGINEERING - PLANNING

SOURCE: ESRI et. al. 2014
(BASE IMAGERY)

