

PUBLIC ROADS DIV.	STATE DIST. NO.	PROJECT NUMBERS		FISCAL YEAR	COUNTY	SHEET NO.	TOTAL SHEETS
		STATE	FEDERAL				
W.V.	5	S202-10-1.38 00	HSIP-0010 (255)D	2016	BERKELEY		

Curve C1
P.I. Station = 16+12.83
Delta = 2°12' 51.16" (LT)
Degree = 8°00' 48.22"
Tangent = 13.8174
Length = 27.6314
Radius = 715.0000
P.C. Station = 15+99.01
P.T. Station = 16+26.64

Curve C2
P.I. Station 18+86.32
Delta = 1°59' 24.11" (RT)
Degree = 8°00' 48.22"
Tangent = 12.4182
Length = 24.8338
Radius = 715.0000
P.C. Station = 18+73.90
P.T. Station = 18+98.74

BEGIN CONSTRUCTION
STATION 22-65.61

BEGIN CONSTRUCTION
STATION 15-66.37

END CONSTRUCTION
STATION 20-01.60

MATCHLINE STA 26+50

AECOM
AECOM TECHNICAL SERVICES, Inc.
150 CLAY STREET, SUITE 430
MORGANTOWN, WV 26501

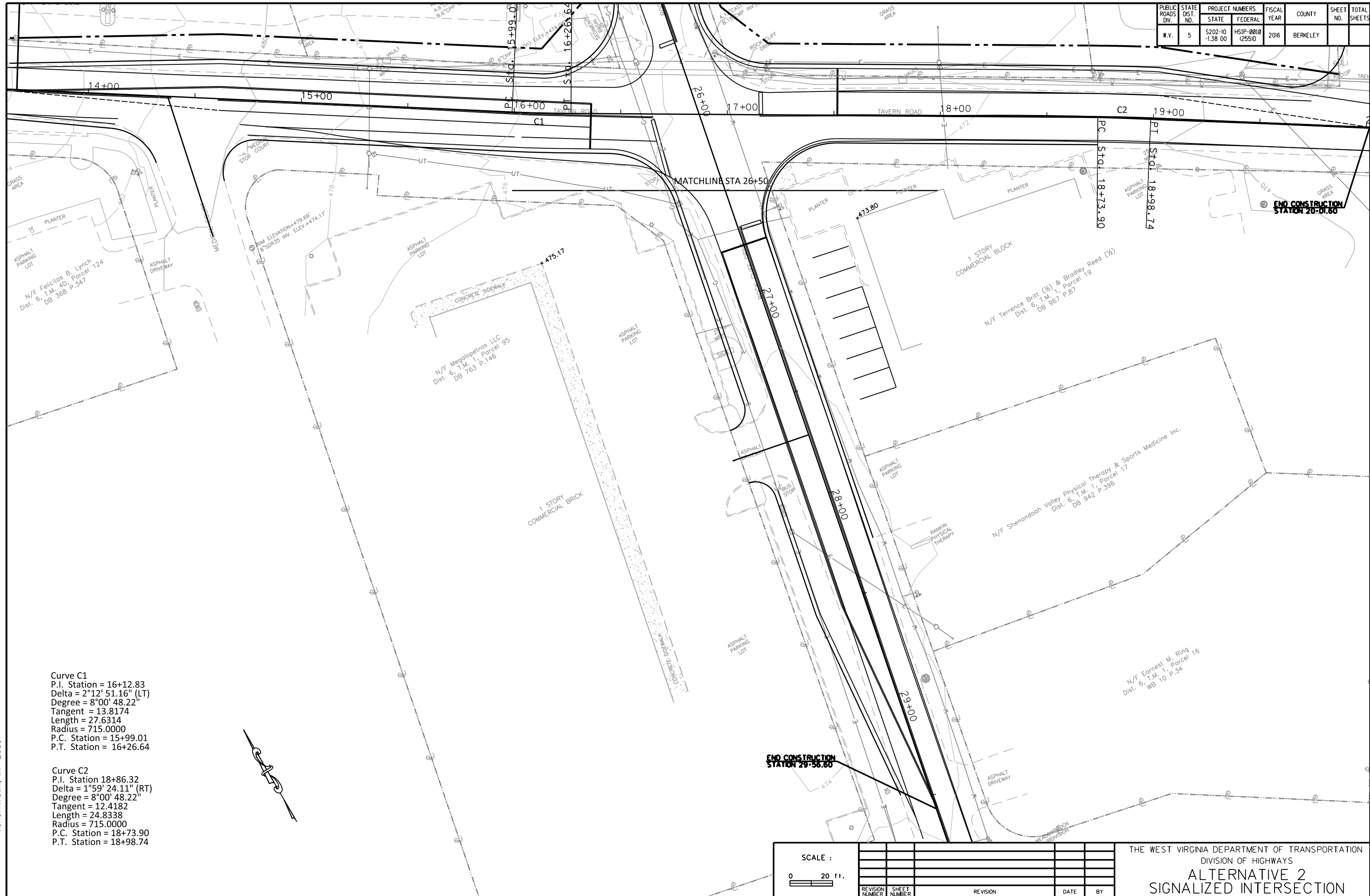
SCALE :
0 20 40 60 80 100 120 140 160 180 200 220 240 260 280 300 320 340 360 380 400 420 440 460 480 500 520 540 560 580 600 620 640 660 680 700 720 740 760 780 800 820 840 860 880 900 920 940 960 980 1000 1100 1200 1300 1400 1500 1600 1700 1800 1900 2000 2100 2200 2300 2400 2500 2600 2700 2800 2900 3000 3100 3200 3300 3400 3500 3600 3700 3800 3900 4000 4100 4200 4300 4400 4500 4600 4700 4800 4900 5000 5100 5200 5300 5400 5500 5600 5700 5800 5900 6000 6100 6200 6300 6400 6500 6600 6700 6800 6900 7000 7100 7200 7300 7400 7500 7600 7700 7800 7900 8000 8100 8200 8300 8400 8500 8600 8700 8800 8900 9000 9100 9200 9300 9400 9500 9600 9700 9800 9900 10000

REVISION NUMBER	SHEET NUMBER	REVISION	DATE	BY

THE WEST VIRGINIA DEPARTMENT OF TRANSPORTATION
DIVISION OF HIGHWAYS
ALTERNATIVE 2
SIGNALIZED INTERSECTION

12/21/2015 11:46:37 PM FILE: 8FILES

PUBLIC ROADS DIV.	STATE DIST. NO.	PROJECT NUMBERS		FISCAL YEAR	COUNTY	SHEET NO.	TOTAL SHEETS
		STATE	FEDERAL				
W.V.	5	S202-10-1.38 00	HSIP-0010 (255)D	2016	BERKELEY		



Curve C1
P.I. Station = 16+12.83
Delta = 2°12' 51.16" (LT)
Degree = 8°00' 48.22"
Tangent = 13.8174
Length = 27.6314
Radius = 715.0000
P.C. Station = 15+99.01
P.T. Station = 16+26.64

Curve C2
P.I. Station 18+86.32
Delta = 1°59' 24.11" (RT)
Degree = 8°00' 48.22"
Tangent = 12.4182
Length = 24.8338
Radius = 715.0000
P.C. Station = 18+73.90
P.T. Station = 18+98.74

END CONSTRUCTION
STATION 29-56.60

END CONSTRUCTION
STATION 26-01.60

SCALE :					
0 20 ft.					
REVISION NUMBER	SHEET NUMBER	REVISION	DATE	BY	

THE WEST VIRGINIA DEPARTMENT OF TRANSPORTATION
DIVISION OF HIGHWAYS
ALTERNATIVE 2
SIGNALIZED INTERSECTION

AECOM
AECOM TECHNICAL SERVICES, Inc.
150 CLAY STREET, SUITE 430
MORGANTOWN, WV 26501

12/21/2015 11:45:02 PM FILE: 8FILES