

# ABOUT THE SLEEPY CREEK ARCH BRIDGE REPLACEMENT PROJECT

## STATE PROJECT #S333-1-5.65

- The West Virginia Department of Transportation is seeking comments regarding the replacement of the Sleepy Creek Arch Bridge. Several alternatives are being studied including a rehabilitation option.
- The current bridge is a one-lane bridge. The project will provide a two-lane bridge allowing for better flow of traffic. The 2008 Average Daily Traffic was 670 Vehicles per day.
- The current Sleepy Creek Arch Bridge is located in Morgan County on County Route 1, approximately 0.18 miles east of County Route 1/7. The bridge was built in 1923 by Lutten Bridge Company of York, Pennsylvania. It consists of two simple concrete deck arches supported by two concrete footings. The overall length is 103 feet 5 inches and deck width is 15 feet 6 inches.
- There are 5 alternatives being studied for this project: Alternative #1 replaces the bridge upstream of the current bridge. Traffic will be maintained on the current bridge during construction. Alternative #2 replaces the bridge 800 feet downstream of the current bridge. Traffic will be maintained on the current bridge. Alternative #3 will replace the bridge just downstream of its current location and traffic will be maintained on the current bridge. Alternative #4 replaces the bridge in its current location. Traffic will be detoured on existing roads during construction. Total length of detour will be 12.1 miles. Alternative #5 consists of renovating the existing bridge. Traffic will be detoured during construction and the total detour length will be 12.1 miles.

<b>Alternative #</b>	<b>Location</b>	<b>Maintenance of Traffic during construction.</b>	<b>Cost</b>
1	Just upstream	Existing bridge	\$2,799,000
2	800 feet downstream	Existing bridge	\$3,214,000
3	140 feet downstream	Existing bridge	\$2,940,000
4	Current location	Existing roads-12.1 mile detour	\$2,134,000
5 (Renovation)	N/A	Existing roads-12.1 mile detour	\$2,454,000
No-Build	N/A	N/A	N/A

- Comments regarding the project may be mailed to the West Virginia Division of Highways at the address listed below on or before June 24, 2011. Comments can also be submitted on this website.

**Mr. Gregory L. Bailey, P.E.**  
**Director, Engineering Division**  
**West Virginia Division of Highways**  
**Capitol Complex Building Five**  
**1900 Kanawha Boulevard East**  
**Charleston, West Virginia 25305-0430**

DATE: May 12, 2011

Mr. Gregory L. Bailey, P.E.  
Director, Engineering Division  
West Virginia Division of Highways  
State Capitol Complex, Building 5  
1900 Kanawha Boulevard East  
Charleston, West Virginia 25305-0430

DATE:  
LOCATION:  
SUBJECT:  
PROJECT: Sleepy Creek Bridge Replacement  
Morgan County  
State Project #S333-1-5.65

COMMENTS DUE BY June 24, 2011

Please consider the following comments:

---

---

---

---

---

---

---

---

---

---

(Please print the following information)

NAME:

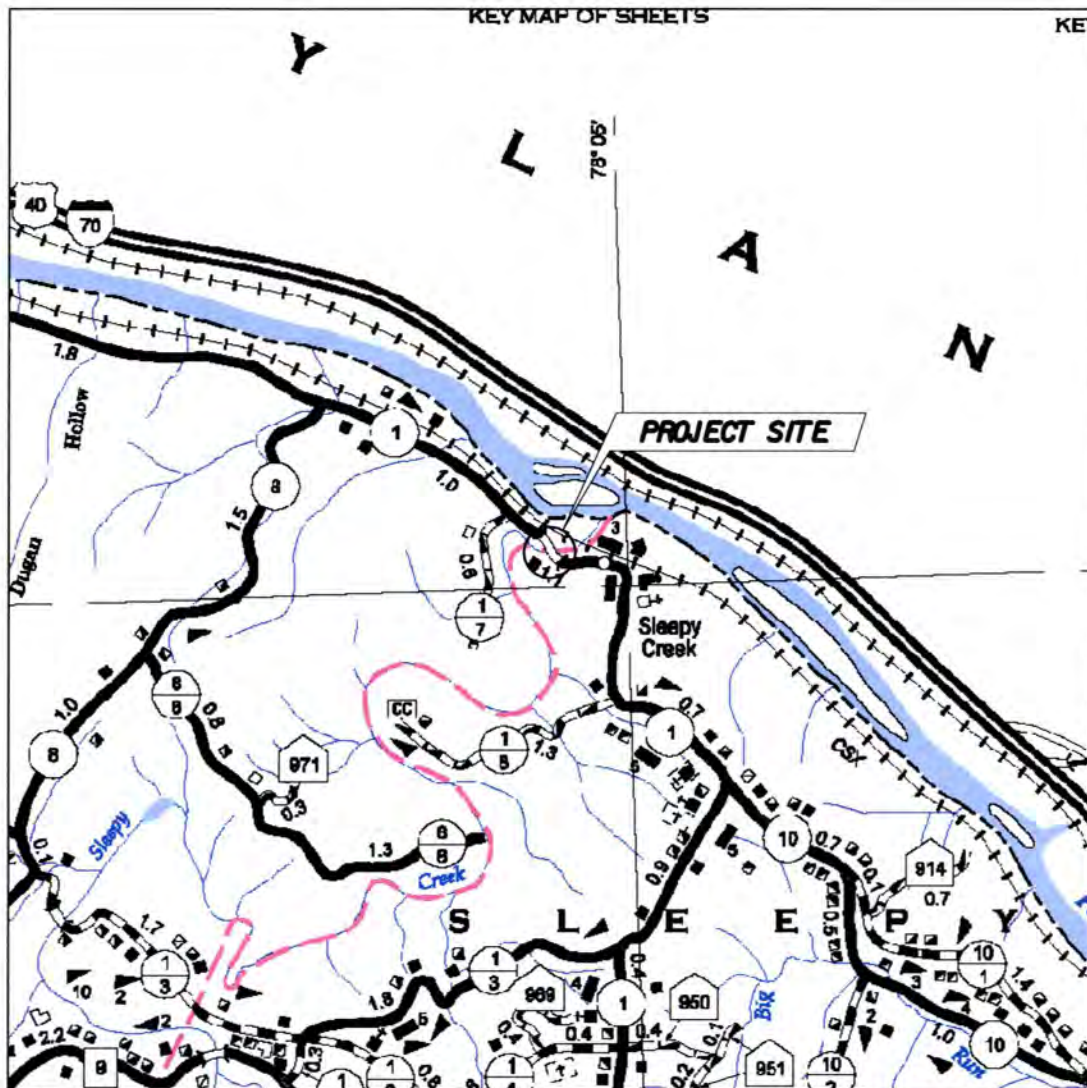
ADDRESS:

ORGANIZATION (IF ANY):

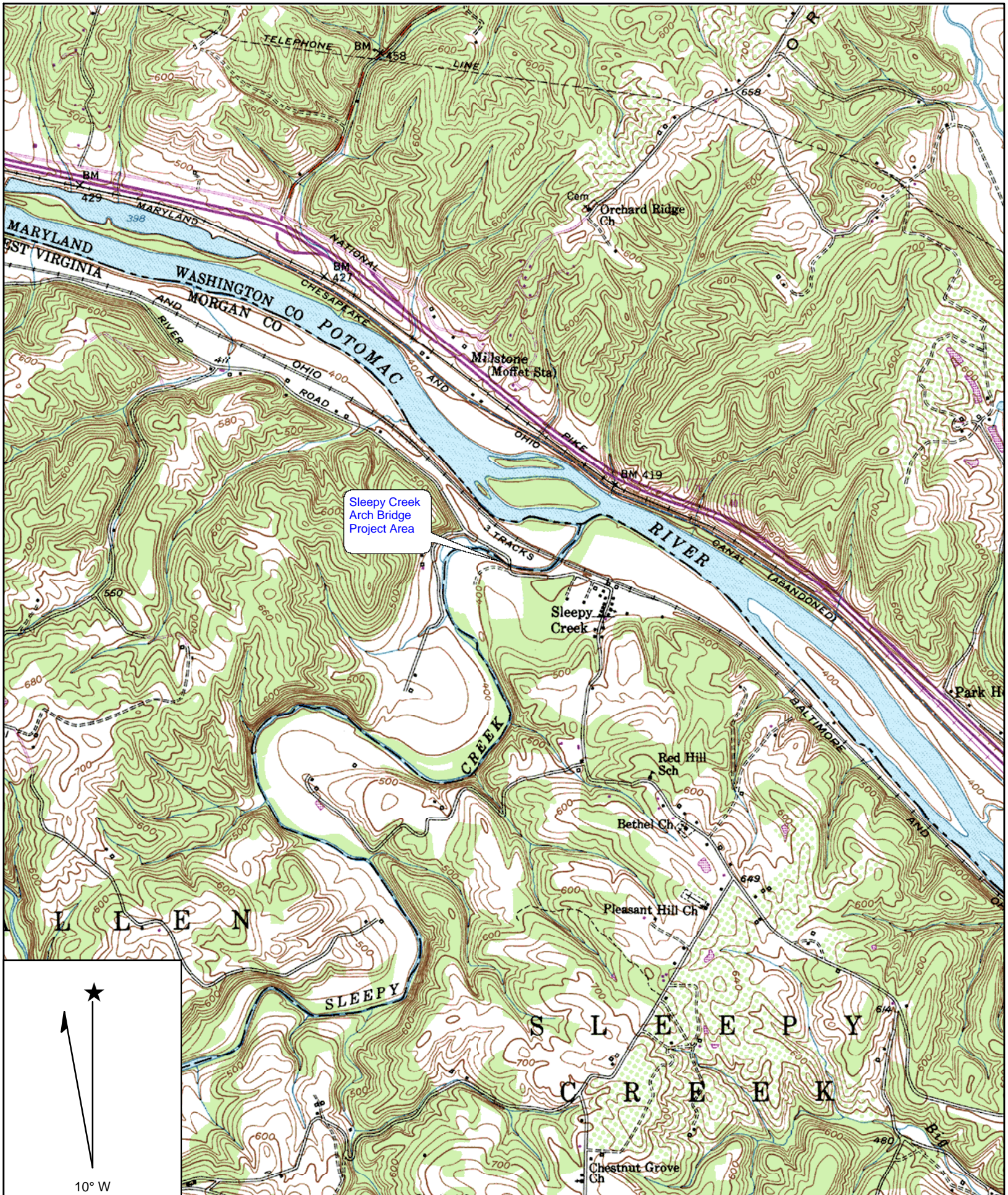
# BRIDGE REPLACEMENT STUDY

## SLEEPY CREEK ARCH BRIDGE

STATE PROJECT NO. S333-1-5.65  
MORGAN COUNTY



WEST VIRGINIA DEPARTMENT OF TRANSPORTATION  
DIVISION OF HIGHWAYS  
ENGINEERING DIVISION  
DECEMBER 2010



Sleepy Creek  
Arch Bridge  
Project Area

Name: CHERRY RUN  
 Date: 3/8/2011  
 Scale: 1 inch equals 2000 feet

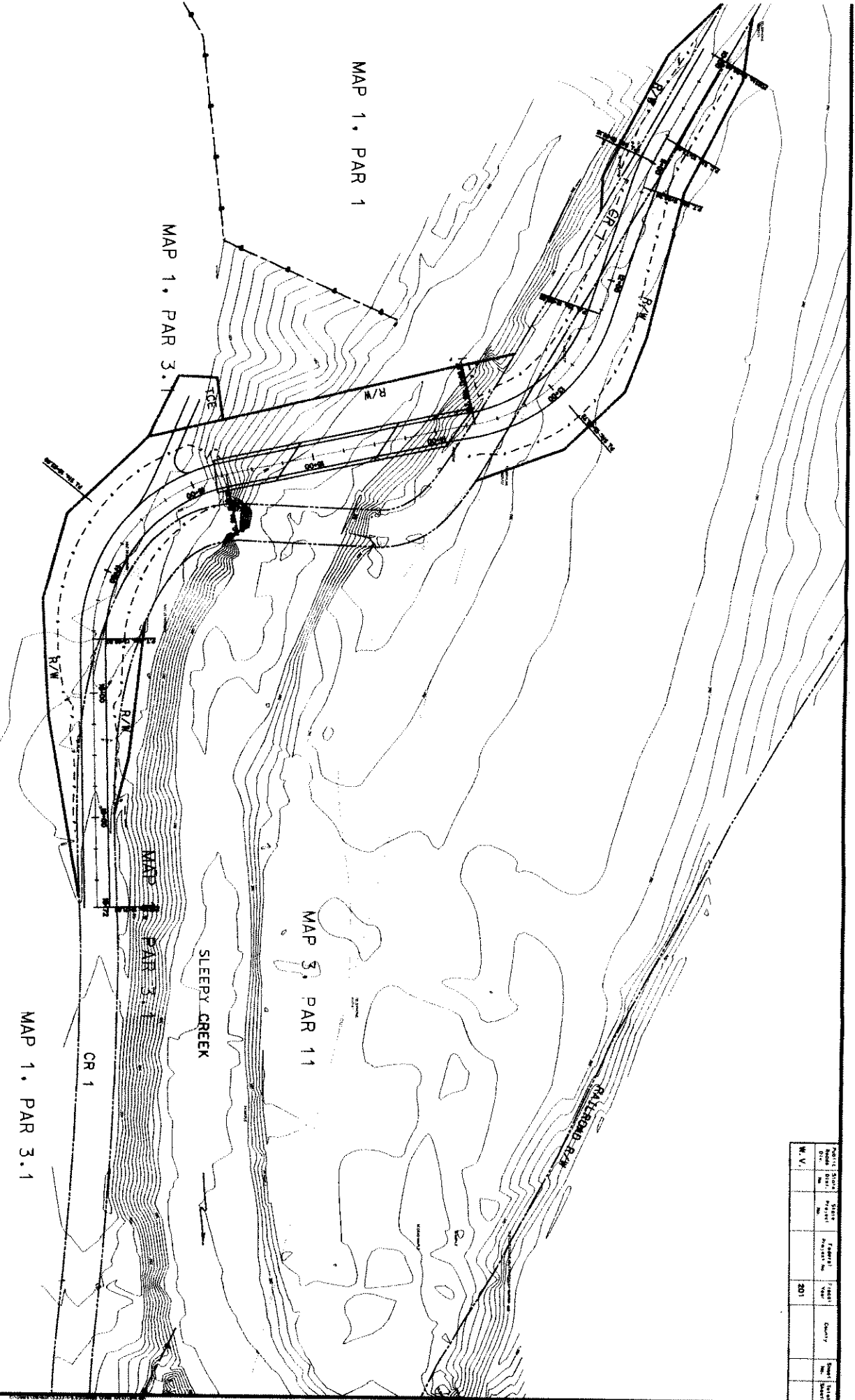
Location: 17 0749699 E 4394904 N  
 Caption: Sleepy Creek Arch Bridge  
 Morgan County

# LOCATION MAP

SLEEPY CREEK ARCH BRIDGE  
STATE PROJECT NO. S333-1-5.65  
MORGAN COUNTY



WEST VIRGINIA DEPARTMENT OF TRANSPORTATION  
DIVISION OF HIGHWAYS  
ENGINEERING DIVISION



Map No.	Scale	Sheet No.	Project No.	Year	County	Sheet No.
M. V.				201		

MAP 1, PAR 1

MAP 1, PAR 3.1

MAP 3, PAR 11

SLEEPY CREEK

MAP 1, PAR 3.1

CR 1

MAP 1, PAR 3.1

DALLAS ROAD R/W

ICE

R/W

R/W

R/W

R/W

R/W

R/W

R/W

R/W

R/W

R/W

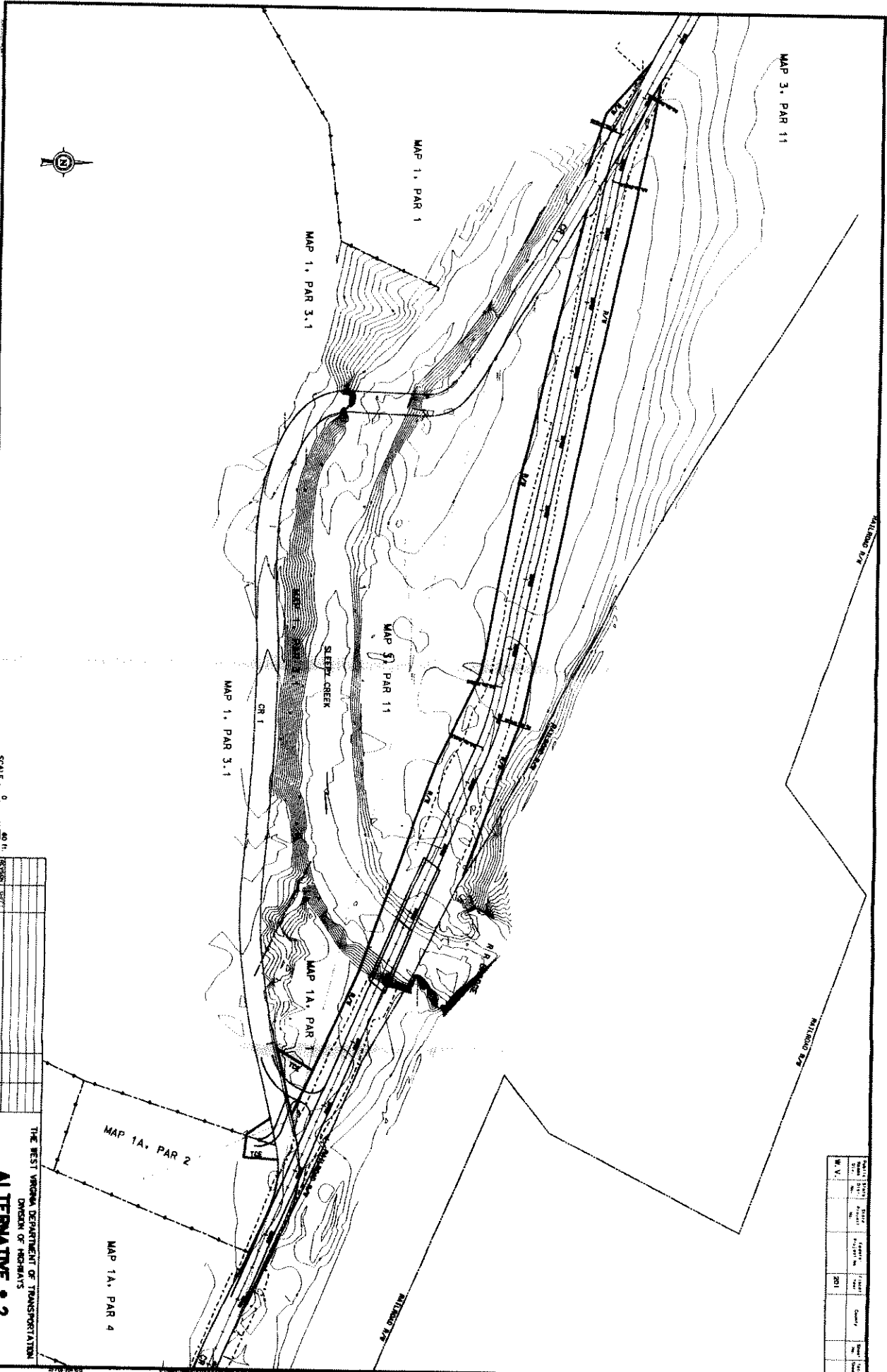
R/W

R/W

R/W

R/W

R/W



SCALE: 0 40 80  
 FEET

NO.	DATE	BY	REVISION

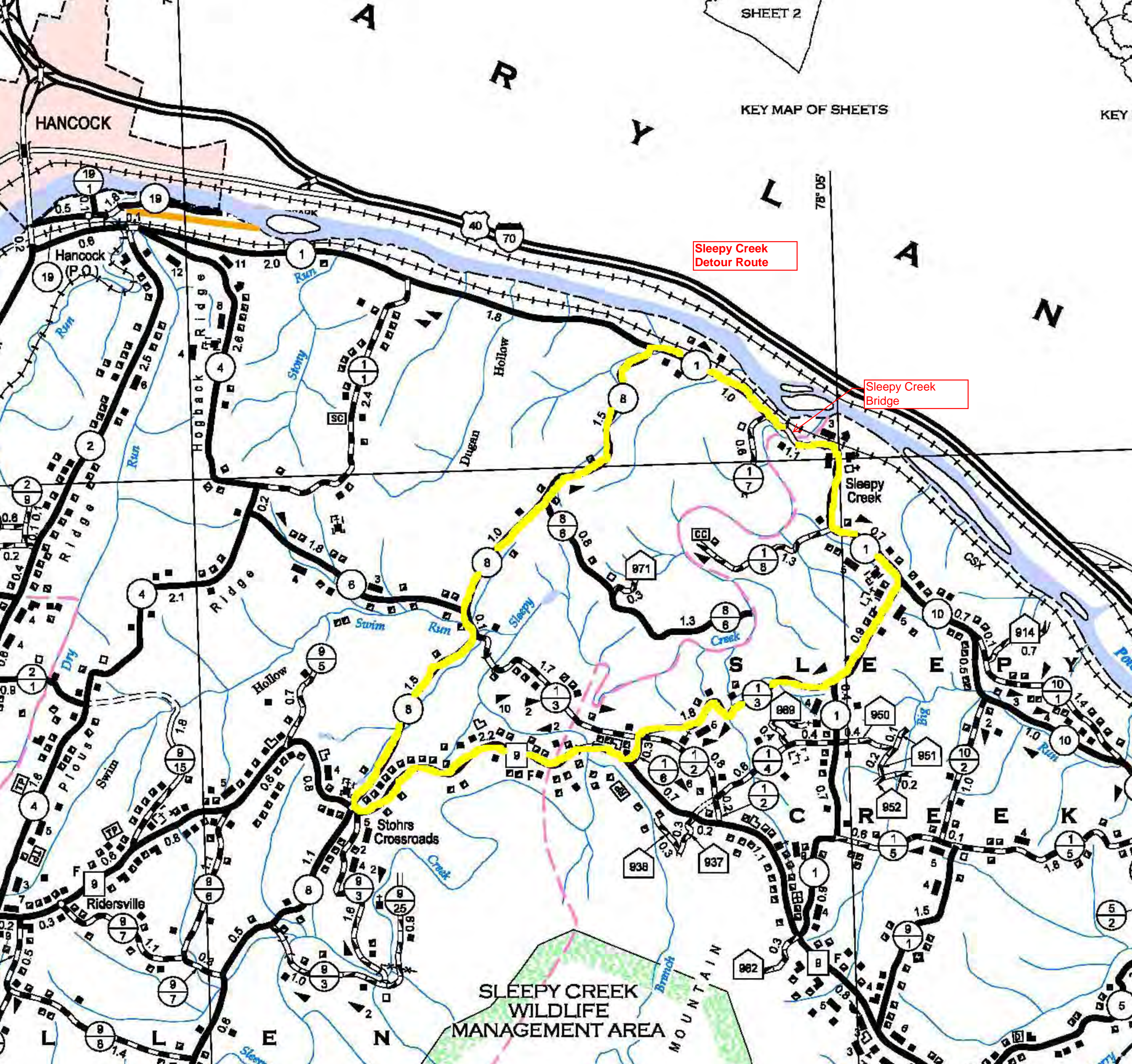
THE WEST VIRGINIA DEPARTMENT OF TRANSPORTATION  
 DIVISION OF HIGHWAYS  
**ALTERNATIVE • 2**

NO.	DATE	BY	REVISION









Sleepy Creek Detour Route

Sleepy Creek Bridge

SLEEPY CREEK WILDLIFE MANAGEMENT AREA

HANCOCK

Hancock (P.O.)

Sleepy Creek

Ridersville

Stohrs Crossroads

SLEEPY CREEK WILDLIFE MANAGEMENT AREA

MOUNTAIN

A

R

Y

L

A

N

S

L

E

F

P

C

R

E

E

K

19

19

1

19

4

1

1

2

2

2

4

9

9

4

4

9

9

9

9

9

9

9

9

9

9

9

9

9

8

8

8

8

8

8

8

8

8

8

8

8

8

8

8

8

8

8

8

8

8

8

8

8

8

8

8

8

8

8

8

8

8

8

8

8

8

8

8

8

8

8

8

8

8

8

8

8

8

8

8

8

8

8

8

8

8

8

8

8

8

8

8

8

8

8

8

8

8

8

8

8

8

8

8

8

8

8

8

8

8

8

8

8

8

8

8

8

8

8

8

8

8

8

8

8

8

8

8

8

8

8

8

8

8

8

8

8

8

8

8

8

8

8

8

8

8

8

8

8

8

8

8

8

8

8

8

8

8

8

8

8

8

8

8

8

8

8

8

8

8

8

8

8

8

8

8

8

8

8

8

8

8

8

8

8

8

8

8

8

8

8

8

8

8

8

8

8

8

8

8

8

8

8

8

8

8

8

8

8

8

8

8

8

8

8

8

8

8

8

8

8

8

8

8

8

8

8

8

8

8

8

8

8

8

8

8

8

8

8

8

8

8

8

8

8

8

8

8

8

8

8

8

8

8

8

8

8

8

8

8

8

8

8

8

8

78° 05'

871

888

937

982

950

951

914

952

938

951

952

938

937

982

950

951

952

938

937

982

950

951

952

938

937

982

950

951

952

938

937

982

950

951

952

914

950

951

952

938

937

982

950

951

952

938

937

982

