

Project Overview

The relocated Tabler Station Connector was partially open to traffic in January 2010. An access road to the industrial park nearby was originally anticipated to be a part of that project, but deferred until later due to funding considerations. The WVDOH is now proposing to complete the access road, which will allow for continued economic development in the area.

With the completion of environmental studies in January 2003, the WVDOH had proposed an access road beginning about a quarter-mile east of the I-81 interchange near Guardian Fiberglass, oriented in a southeasterly direction and terminating on County Route 11/21 at the industrial park. Since that time, local preferences have changed and it may be more beneficial to the community to shift the preferred alternative slightly eastward. Consequently, a shifted alternative that begins closer to Tabler Station has been developed and is currently under study by the WVDOH. Both alternatives are shown inside this brochure.

The cost of constructing either alternative is approximately \$3.7 million. A shift in the proposed alignment, however, could better support existing land use patterns and avoid potential impacts to a 19th Century farm that may be eligible for listing on the *National Register of Historic Places*.

Comments

The purpose of this informational workshop and public meeting is to afford participants an opportunity to ask questions and state their views and opinions on the project. Your comments are very important to us. Comments on the project are due by May 10, 2013, and can be returned to any WVDOH representative here today or sent to the following:

Mr. Greg E. Bailey, P.E., Director Engineering Division
West Virginia Department of Transportation
State Capitol Complex, Building 5
1900 Kanawha Boulevard, East
Charleston, WV 25305

Additional comments or information can be sent to Sondra Mullins (Sondra.L.Mullins@wv.gov) or by visiting the WVDOH website at <http://go.wv.gov/dotcomment> for project information and the opportunity to comment on the project.

WELCOME

INFORMATIONAL WORKSHOP PUBLIC MEETING

State Project X302-81/8-0.00(03)
Federal Project STP-0818(005)

Tabler Station Industrial Park Access Road Project

Valley View Elementary School
Wednesday, April 10, 2013
4:00 PM to 7:00 PM

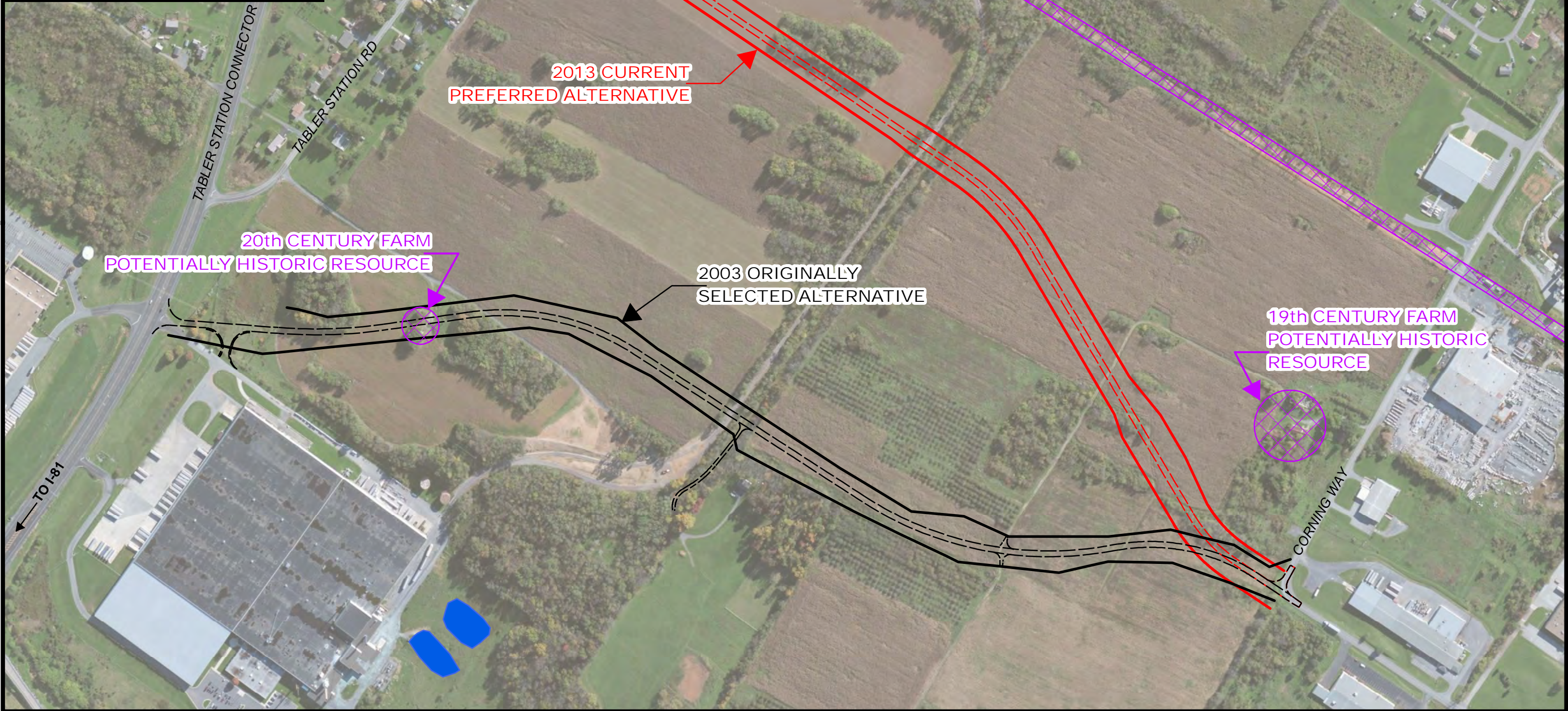
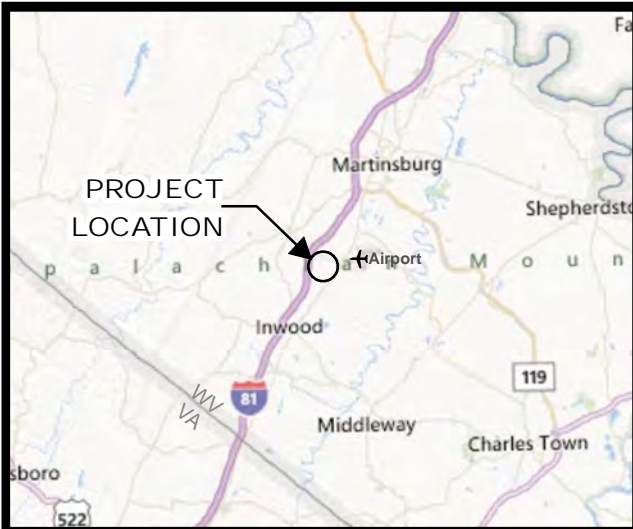
Purpose of Today's Meeting

The West Virginia Department of Transportation Division of Highways (WVDOH) is conducting this informational workshop and public meeting to discuss the proposed Tabler Station Industrial Park Access Road Project. The project is a new two-lane industrial park access road between the new Tabler Station Connector (Berkley County Route 32) and Corning Way (County Route 11/21).

Environmental studies are currently being conducted by the WVDOH in conjunction with the Federal Highway Administration (FHWA) to fulfill requirements set forth in both the National Environmental Policy Act of 1969 (NEPA) and the Safe, Accountable, Flexible, Efficient Transportation Equity Act: A Legacy for Users (SAFETEA-LU). Today's meeting will provide you with information on the status of the environmental studies and other project-related information.



U.S. Department
of Transportation
**Federal Highway
Administration**



LEGEND

- 2003 Originally Selected Alternative
- 2013 Current Preferred Alternative
- Historic/Potentially Historic Resource
- Wetland/Pond

0 400 Feet

PREFERRED ALTERNATIVE