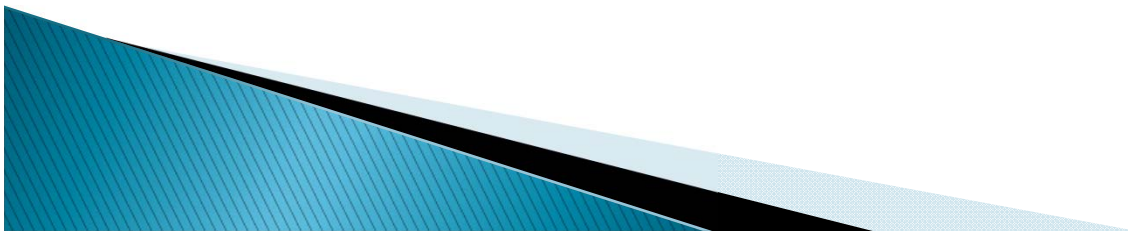


Tabler Station Industrial Park Access Road Project



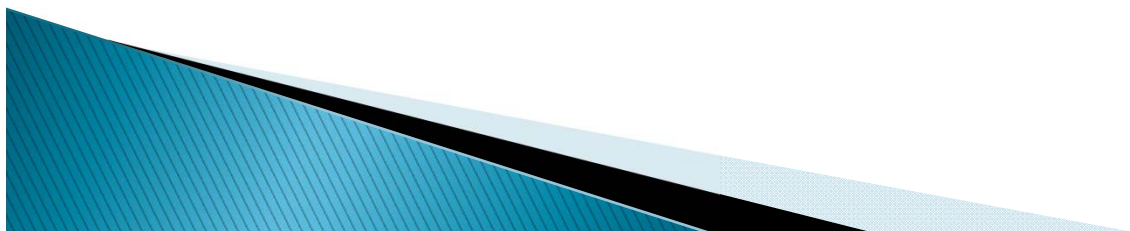
Purpose and Need for the Project

- Provide a two-lane roadway from the new Tabler Station Connector to Corning Way
- Alleviate truck traffic
- Reduce operating costs for local industries
- Support economic development
- Provide system continuity



Project Issues

Alternative	Analysis Factors	Cost
A	<ul style="list-style-type: none">*Impacts potentially historic 19th Century farm*Impacts Guardian Fiberglass plant*2003 originally selected alternative	\$3.7 million
C	<ul style="list-style-type: none">*Impacts to existing land use patterns*Community preferences	\$3.7 million
C-Mod	<ul style="list-style-type: none">*Impacts to existing land use patterns*Community preferences*2013 current preferred alternative	\$3.7 million
D	<ul style="list-style-type: none">*Requires new bridge over I-81*Induces future development west of I-81	\$5.3 million



History of the Project

- August 1999: Design Location Report
- September 1999: Public Workshop on Alternatives
- February 2000: Assessment of Archaeological and Historic Resources
- May 2000: Traffic Operations Analysis
- January 2003: Environmental Documentation
- 2009: Construction of Tabler Station Connector
- January 2010: Connector Partially Open for Traffic
- 2012: Re-evaluate Location of Access Road
- April 2013: Public Meeting for Access Road
- Future 2013: Begin Final Design of Access Road



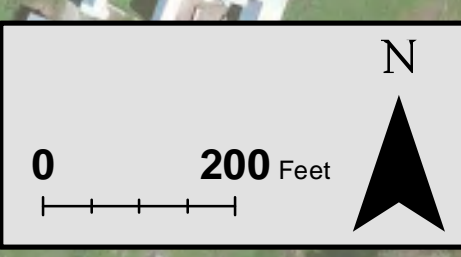
19th CENTURY FARM
POTENTIAL HISTORIC RESOURCE

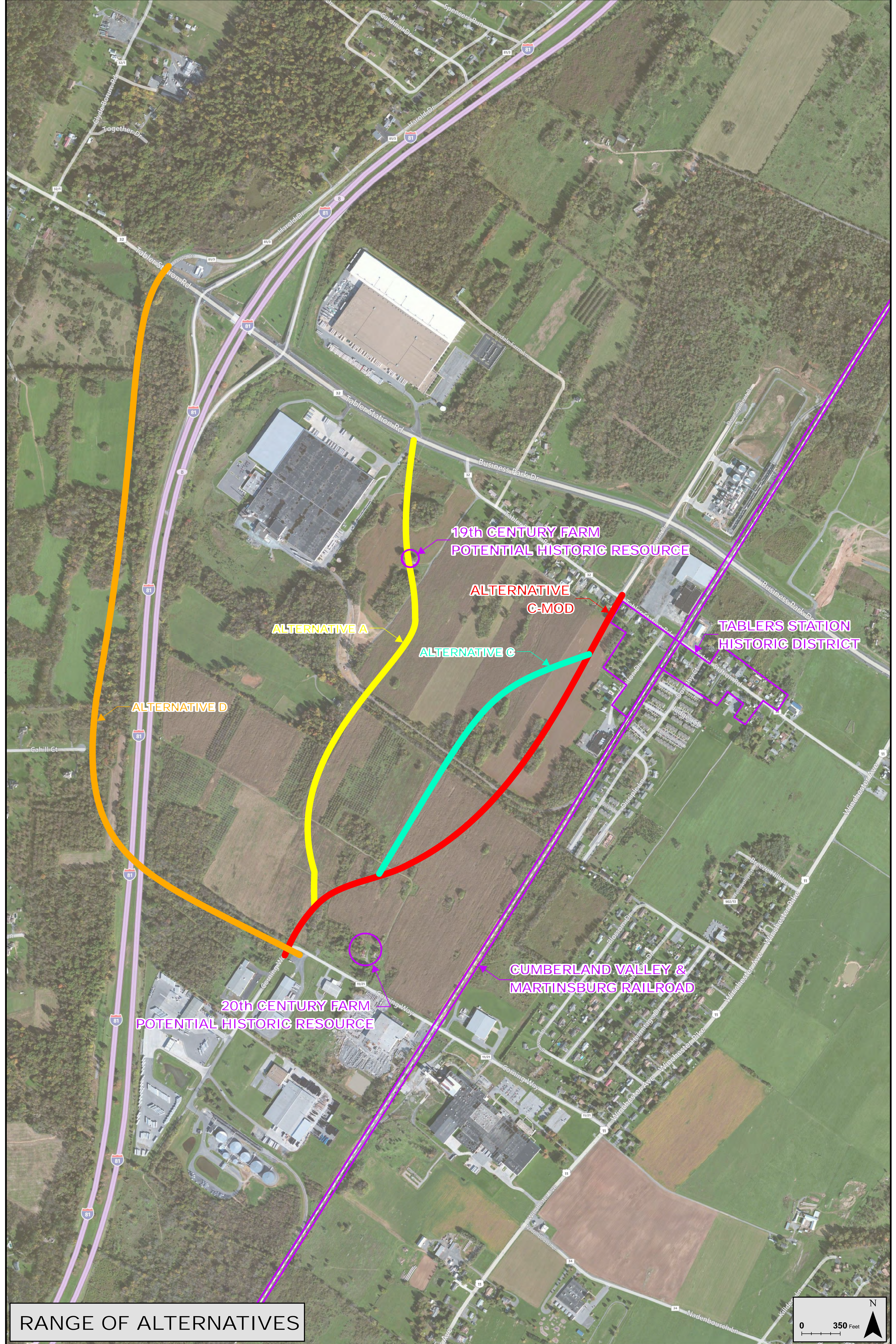
TABLERS STATION
HISTORIC DISTRICT

20th CENTURY FARM
POTENTIAL HISTORIC RESOURCE

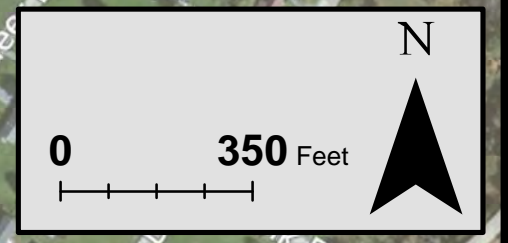
CUMBERLAND VALLEY &
MARTINSBURG RAILROAD

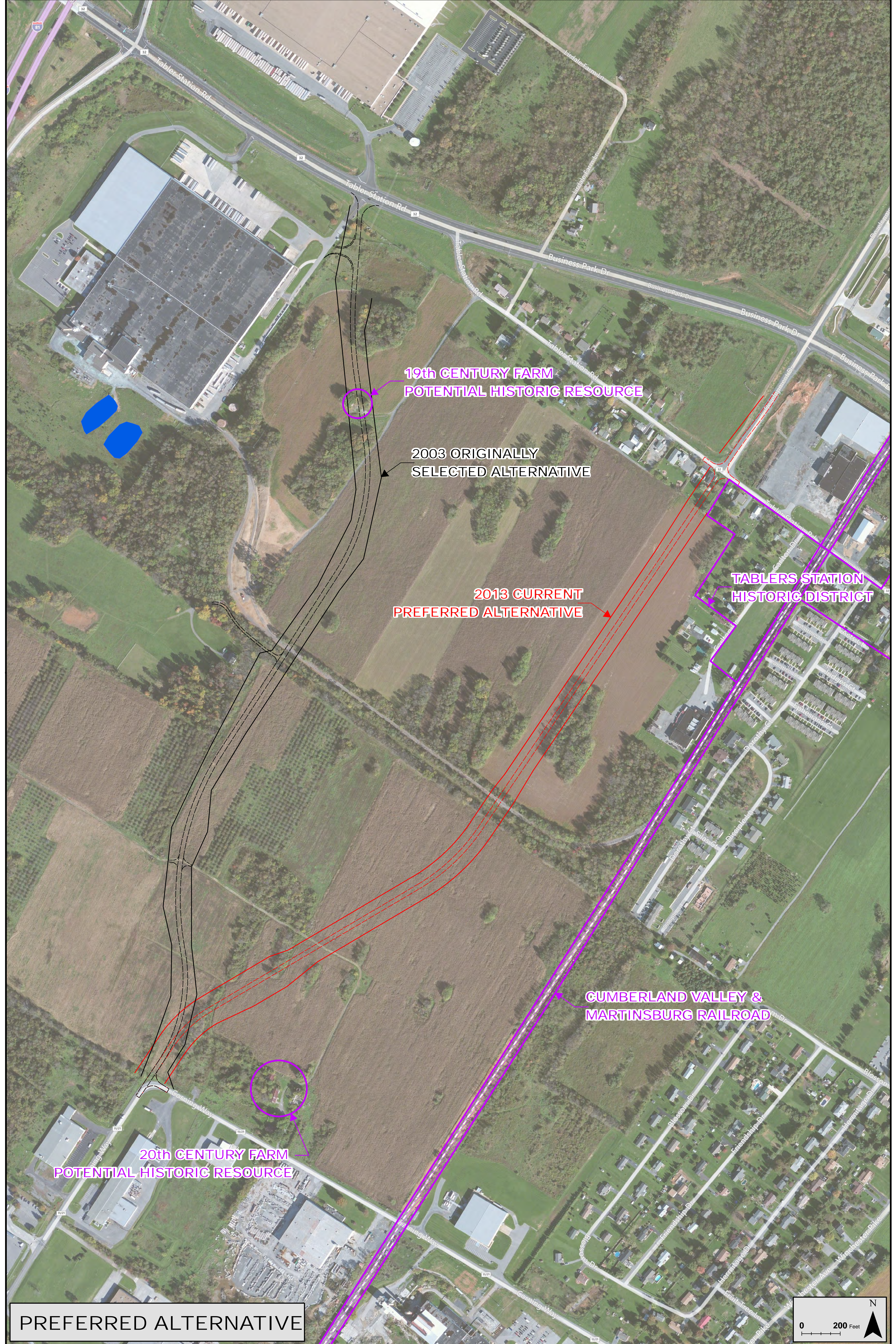
HISTORIC RESOURCES





RANGE OF ALTERNATIVES





19th CENTURY FARM
POTENTIAL HISTORIC RESOURCE

2003 ORIGINALLY
SELECTED ALTERNATIVE

2013 CURRENT
PREFERRED ALTERNATIVE

TABLERS STATION
HISTORIC DISTRICT

GUMBERLAND VALLEY &
MARTINSBURG RAILROAD

20th CENTURY FARM
POTENTIAL HISTORIC RESOURCE

PREFERRED ALTERNATIVE

