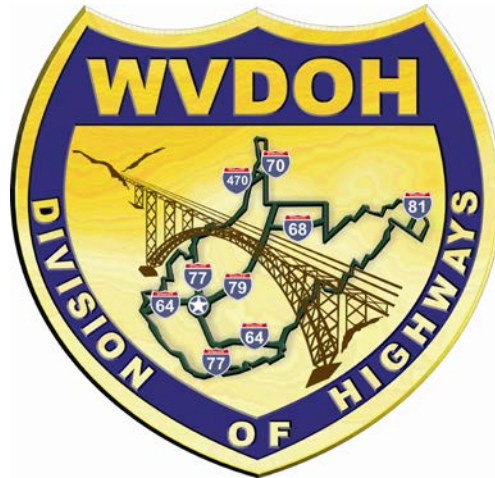


Informational Workshop Public Meeting

Thomas Buford Pugh Bridge



**WV Department of Transportation
Division of Highways
In cooperation with the Federal Highway
Administration**

**State Project S310-41-0.01
Federal Project BR-0041(057)E**

**Prince Amtrak Station
Fayette County
Wednesday, February 15, 2012
3:00PM to 6:00PM**

Thomas Buford Pugh Bridge Replacement
STATE PROJECT S310-41-0.01
FEDERAL PROJECT BR-0041(057)E

The purpose of the project is to provide a bridge that meets current WVDOH design standards and addresses the safety issues associated with the condition of the existing bridge. Due to the location of the project within the New River Gorge National River, development of a bicycle path and pedestrian shoulder will also be considered.

The Thomas Buford Pugh Bridge (formerly Prince Bridge) was constructed in 1931 and consists of seven spans: four simple steel I-beams, and three simple steel through trusses. The bridge is eligible for the National Register of Historic Places, and is located in a curved section of roadway, and both approach spans are curved. The current overall length of the bridge is 734 feet and the roadway width is 20 feet with no sidewalks. The structure is used as a two lane bridge with a posted weight restriction of 3 tons and a 9 foot vertical clearance. The 3 ton weight limit and 9 foot height restriction was a result of discovering critical structural deficiencies during a periodic bridge inspection in September 2011. The bridge is currently safe for the posted weight limit. Any further deterioration will result in the closure of the bridge.



Taking into consideration the safety of the bridge for the traveling public and all of the project constraints only two alternatives are viable options:

- **Option #1-** Rebuild the existing bridge in its current location and require a detour on existing routes. This alternative will **close the bridge** to traffic for 6-8 months during construction. The total construction time is estimated to be 2 years. However, building on the existing location and closing the bridge to traffic will expedite the construction completion time. **Cost for this option \$6.5 million.**

- **Option #2 -** Build the new bridge downstream of the existing bridge allowing traffic to be maintained on the existing bridge during construction. Total construction time is 3 years. **Cost for this option \$10.5 million.**

USE COLOR CODED DETOUR MAP FOR DETOURS SHOWN BELOW

Directions for the 60 mile detour:



Head west on WV Route 41 S/W (3.9 miles).



Follow WV Route 41 S as it becomes WV Route 61 N (4.4 miles).



Continue straight onto WV Route 16 N/W (5.4 miles).



Turn right onto US-19 N (14.8 miles).



Take Gauley Bridge/Rainelle ramp to US 60 E and turn left (9.5 miles).



Take a slight right onto WV Route 41 S/W and keep left at the fork (11.3 miles).

Directions for the 57 mile detour:



Head west on WV Route 41 S/W and turn left to stay on WV Route 41 (8.7 miles).



Turn right to stay on WV Route 41 S (0.4 miles).



Turn right onto US -19 S (1.1 miles).

Turn left towards East Beckley Bypass and take first right onto the bypass (0.736 miles).



Keep left at the fork and merge onto I-64 E (19.5 miles).

Take exit 143 toward Green Sulphur Springs/ Meadow Bridge (0.3 miles).



Turn right onto WV Route 20 N (6.2 miles).



Turn left onto Co Route 4/Lick Creek Rd. (0.1 miles).



Turn right onto WV Route 20 N (6.2 miles).



Make a slight left on Co 31 / Meadow Bridge Rd (6.5 miles).



Take a sharp left onto WV Route 41 S/W and keep left at the fork (13 miles).

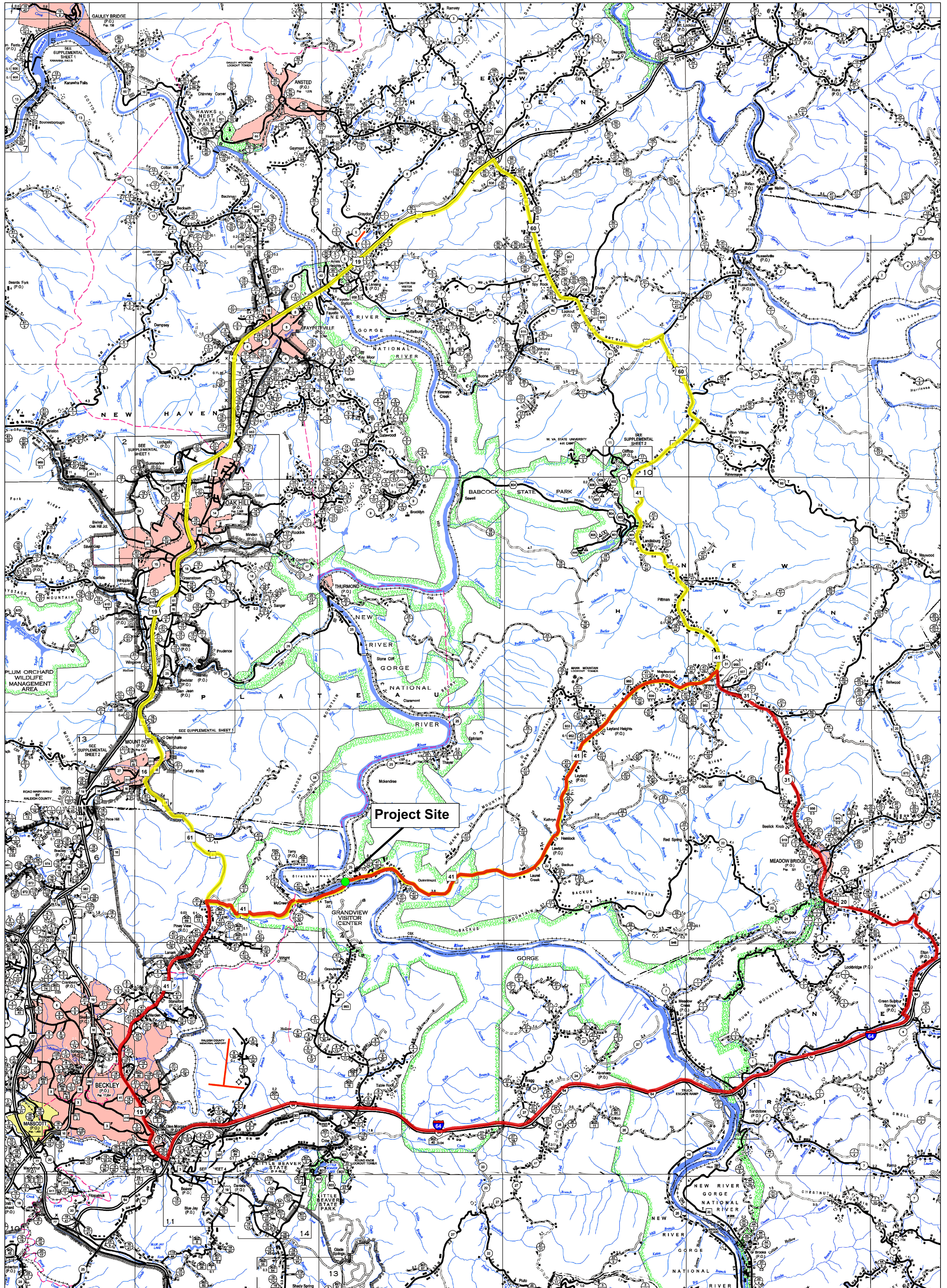
This meeting complies with the public involvement requirements of the National Environmental Policy Act (NEPA) and Section 106 of the National Historic Preservation Act.

Your comments are important: comment sheets will be provided at the workshops; they can be dropped in a comment box at the workshop, or mailed to:

**Gregory Bailey, P.E., Director, Engineering Division
West Virginia Division of Highways
Capital Complex Building Five, Room 317
1900 Kanawha Boulevard East
Charleston, West Virginia 25305-0430**

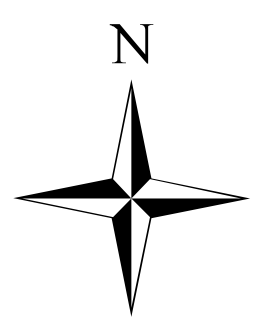
Any additional questions or comments can be sent to Sondra Mullins (Sondra.L.Mullins@wv.gov) or visit the WVDOH Website at www.transportation.wv.gov for project information and the opportunity to comment on the project. **Comments are due by Thursday, March 15, 2012.**

Thomas Buford Pugh Memorial Bridge Formerly Known as Prince Bridge Maintenance of Traffic Detour



Preferred alternative will close the bridge for six months.

January 27, 2012

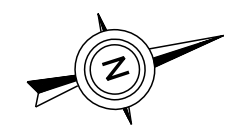


Legend

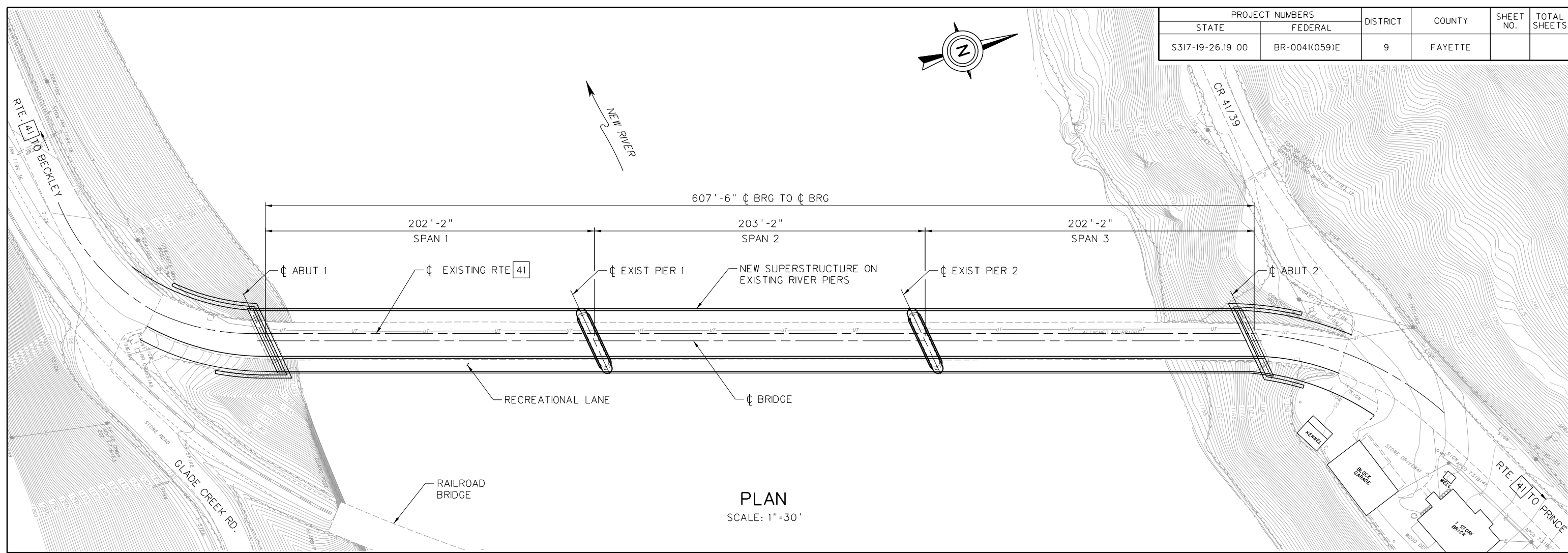
- 60 Mile Detour
- Common Route
- 57 Mile Detour



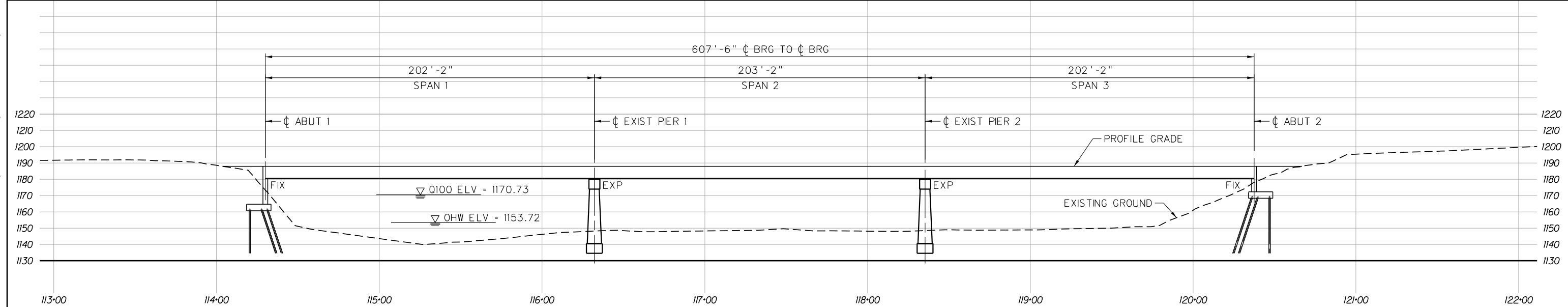
PROJECT NUMBERS		DISTRICT	COUNTY	SHEET NO.	TOTAL SHEETS
STATE	FEDERAL				
S317-19-26.19 00	BR-0041(059)E	9	FAYETTE		



02\10\12 10:26:13 AM



PLAN
SCALE: 1"=30'



ELEVATION
SCALE: 1"=30'

f:\trans\WV-354_Pugh\Structures\2012-01-13_New Super on Existing Sub Drawings\TBP Plan&Elev.dgn

DESIGNED	DAV	1/2012
DRAWN	TLP	1/2012
CHECKED	JVE	1/2012
NO.	REVISION	DATE
	REVIEWED	DAV
		1/2012

WEST VIRGINIA
DEPARTMENT OF TRANSPORTATION
DIVISION OF HIGHWAYS



THOMAS BUFORD PUGH
MEMORIAL BRIDGE
OVER NEW RIVER

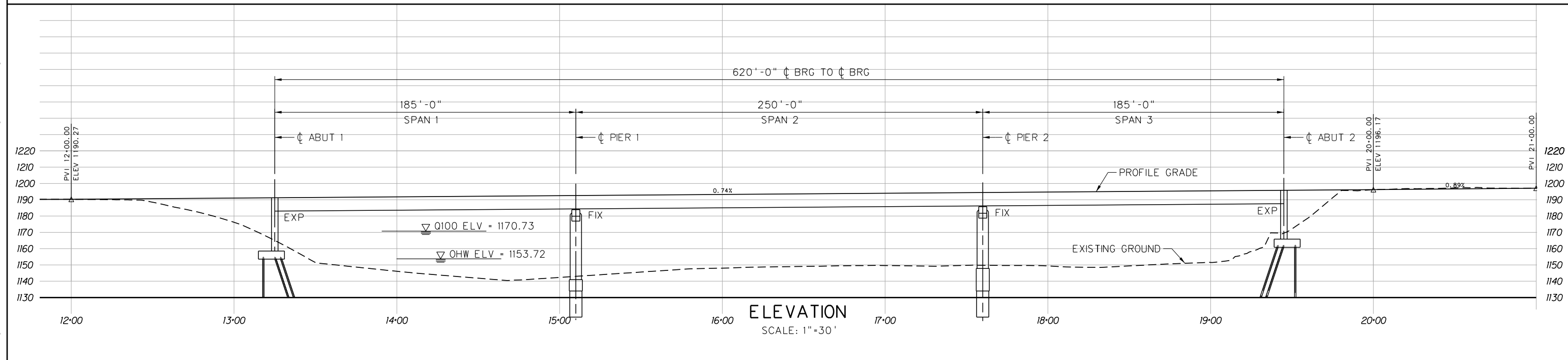
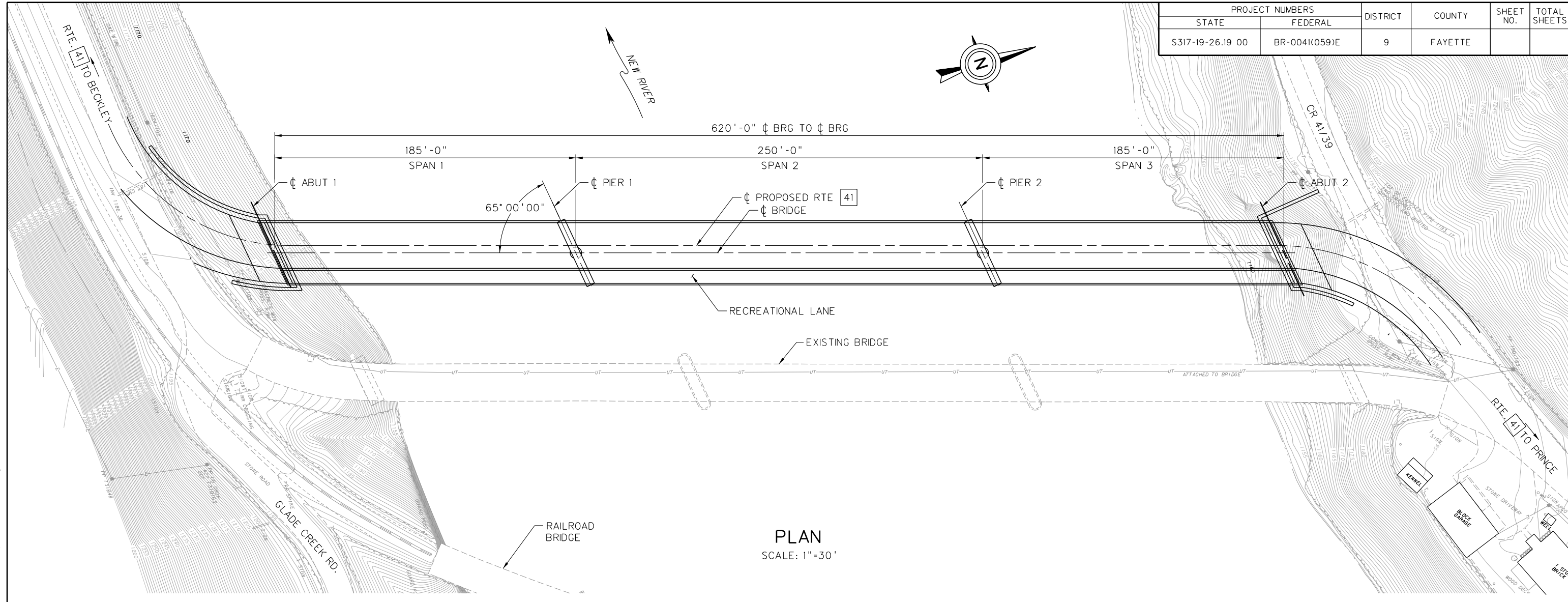
NEW SUPERSTRUCTURE
ON EXISTING RIVER PIERS

DESIGN NO.	10095
BORDER SCALE:	
SHEET	
	OF

02\10\12 10:25:50 AM

f:\trans\WV-354_Pugh\Structures\2012-01-13_New Super on Existing Sub Drawings\TBP Site Plan 620 ft_updated 2012_01.dgn

PROJECT NUMBERS		DISTRICT	COUNTY	SHEET NO.	TOTAL SHEETS
STATE	FEDERAL				
S317-19-26.19 00	BR-0041(059)E	9	FAYETTE		



NO.	REVISION	DATE	BY	REVIEWED	DAV	1/2012
	DESIGNED	DAV	1/2012			
	DRAWN	TLP	1/2012			
	CHECKED	JVE	1/2012			
	REVIEWED	DAV	1/2012			

WEST VIRGINIA
DEPARTMENT OF TRANSPORTATION
DIVISION OF HIGHWAYS

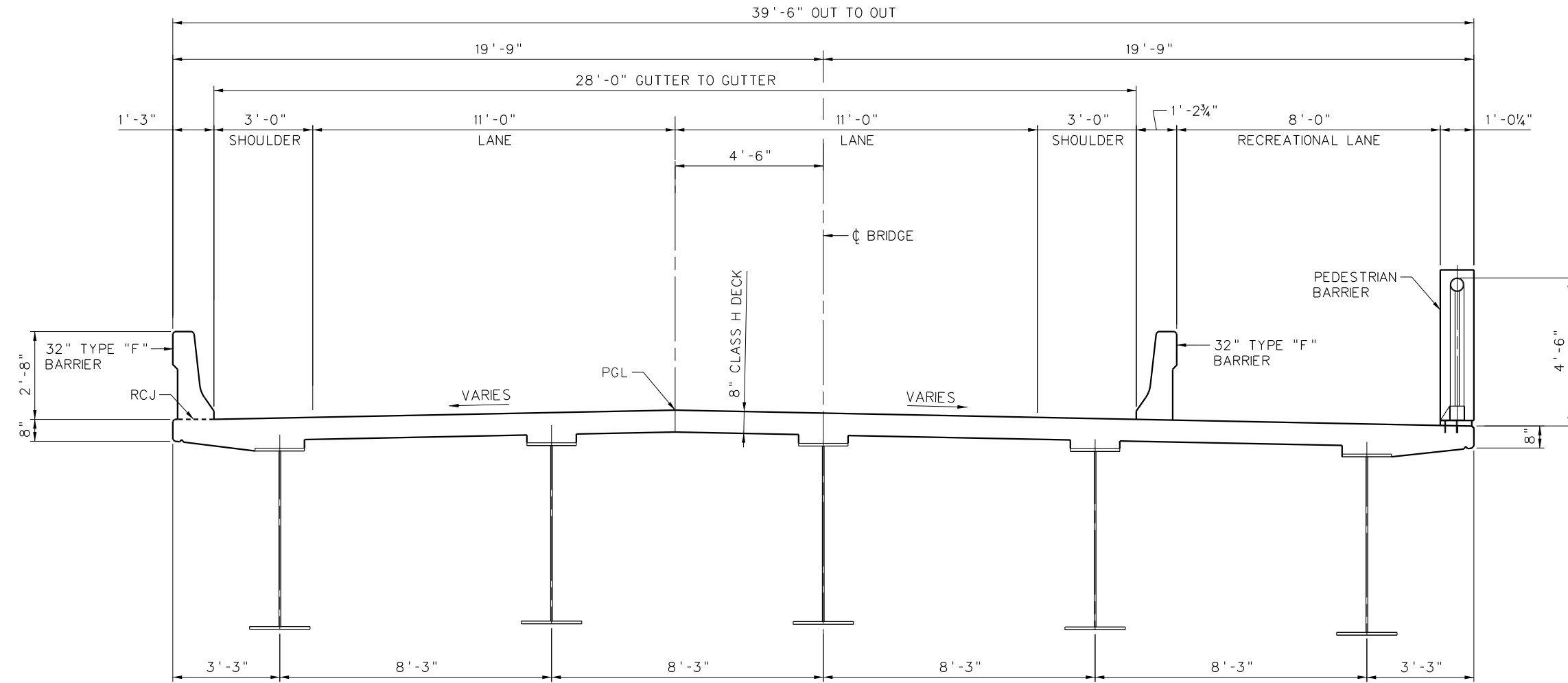


THOMAS BUFORD PUGH
MEMORIAL BRIDGE
OVER NEW RIVER

620 FT BRIDGE
185' - 250' - 185'

DESIGN NO.	10095
BORDER SCALE:	
SHEET	
OF	

PROJECT NUMBERS		DISTRICT	COUNTY	SHEET NO.	TOTAL SHEETS
STATE	FEDERAL				
S317-19-26.19 00	BR-0041(059)E	9	FAYETTE		



TYPICAL SECTION
SCALE: 1/2" = 1'-0"

01\23\12 04:07:06 PM

f:\trans\WV-354_Pugh\Structures\2012-01-13_New Super on Existing Sub Drawings\Pugh_Typical Section.dgn

DESIGNED	JVE	1/2012
DRAWN	TLP	1/2012
CHECKED	PCM	1/2012
NO.	REVISION	DATE
REVIEWED	DAV	1/2012

WEST VIRGINIA
DEPARTMENT OF TRANSPORTATION
DIVISION OF HIGHWAYS



THOMAS BUFORD PUGH
MEMORIAL BRIDGE
OVER NEW RIVER

TYPICAL SECTION

DESIGN NO.	10095
BORDER SCALE:	
SHEET	
	OF

DATE:

Mr. Gregory L. Bailey, P.E.
Director, Engineering Division
West Virginia Division of Highways
State Capitol Complex, Building 5
1900 Kanawha Boulevard East
Charleston, West Virginia 25305-0430

DATE: Wednesday, February 15, 2012
LOCATION: Prince Amtrak Station
SUBJECT: INFORMATIONAL WORKSHOP PUBLIC MEETING
PROJECT: Thomas Buford Pugh Bridge (formerly Prince Bridge)
Fayette and Raleigh Counties

COMMENTS DUE BY March 15, 2012

Please consider the following comments:

(Please print the following information)

NAME:

ADDRESS:

ORGANIZATION (IF ANY):

How did you hear about the Informational Workshop Public Meeting?

Project Information and Comment Sheets
Can be found online at our web page www.transportation.wv.gov.
Click on Comment on projects, Open, and then click on Thomas Buford Pugh Bridge Project.