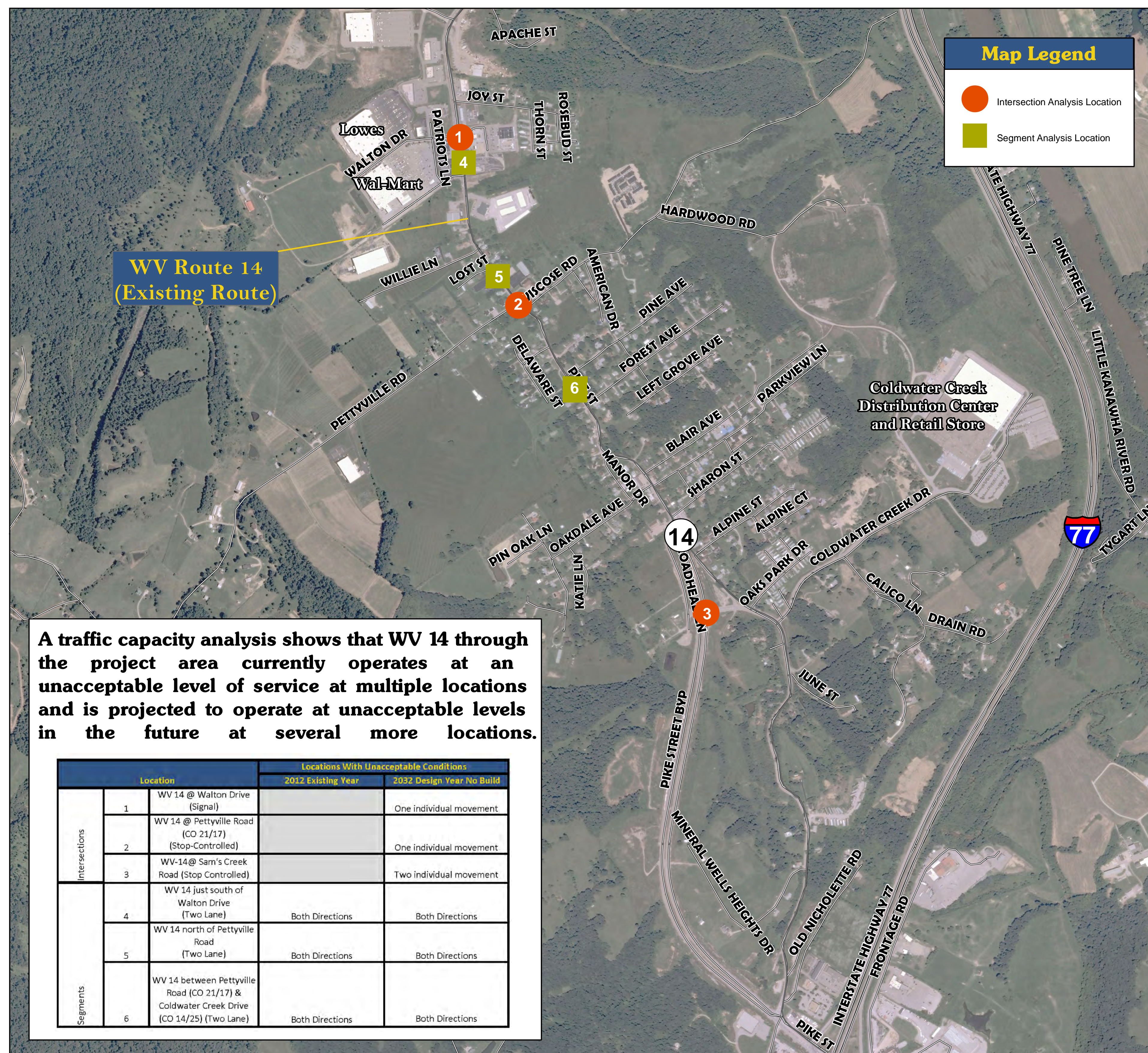


WV 14, Mineral Wells to Pettyville

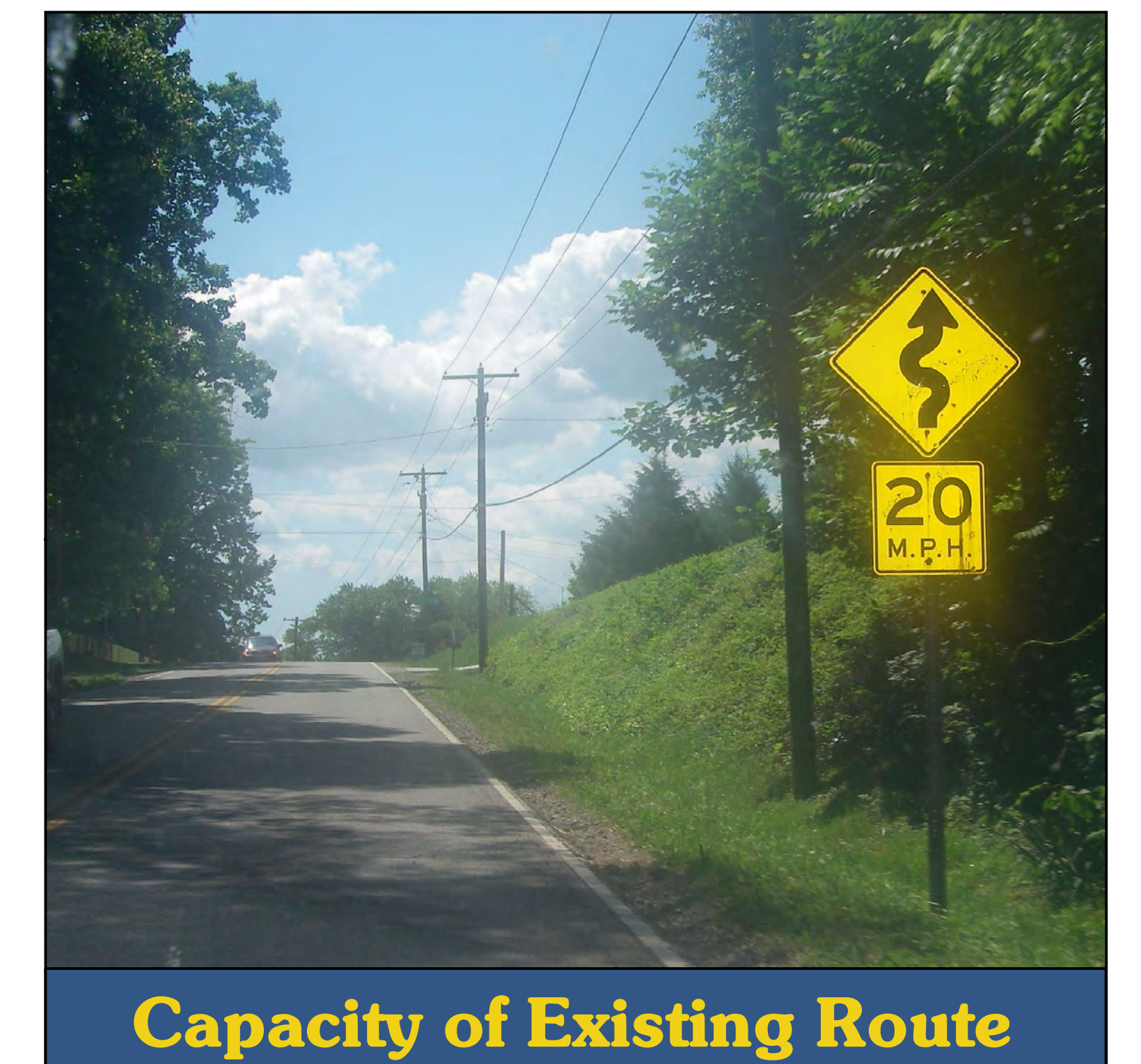
PURPOSE AND NEED



The purpose of the WV 14 Mineral Wells to Pettyville project is to increase capacity, reduce geometric constraints, control access along WV 14 for travelers between Mineral Wells and Pettyville, and facilitate economic development in accordance with regional land use planning. With its current design, WV 14 north of the I-77 interchange to the Pettyville commercial district is not capable of handling the demand of vehicle volume while maintaining acceptable traffic conditions.



New four-lane roadway reduces to two-lane travel north of I-77 interchange.



Pettyville commercial district includes several large chain stores such as Walmart Supercenter.

